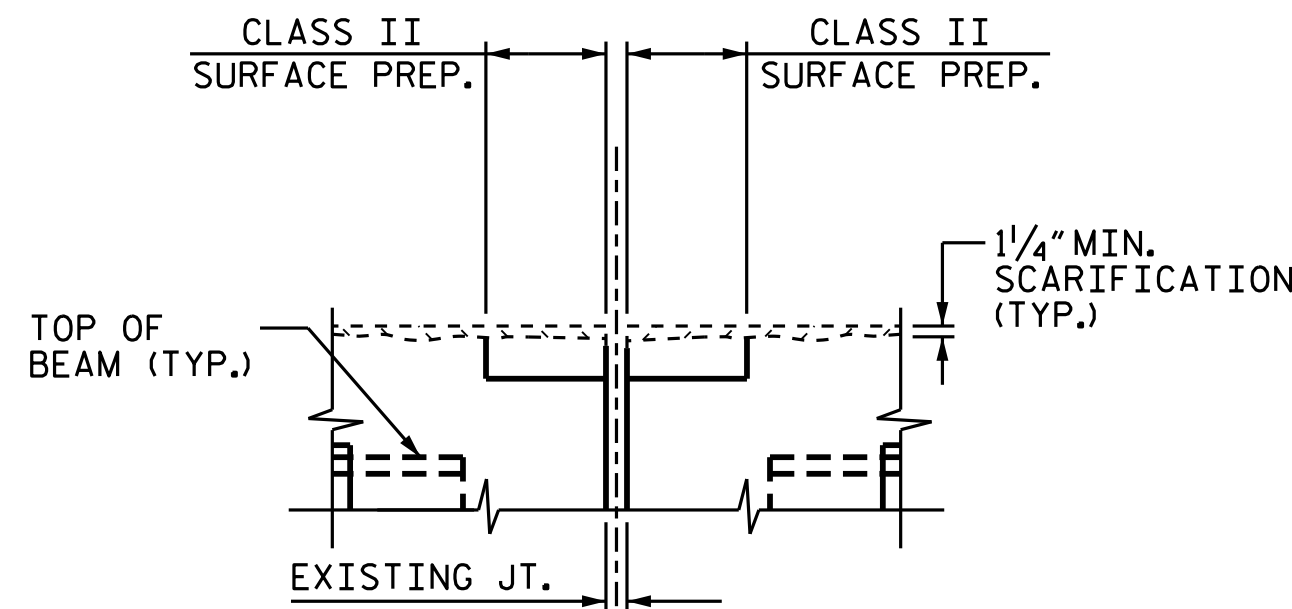
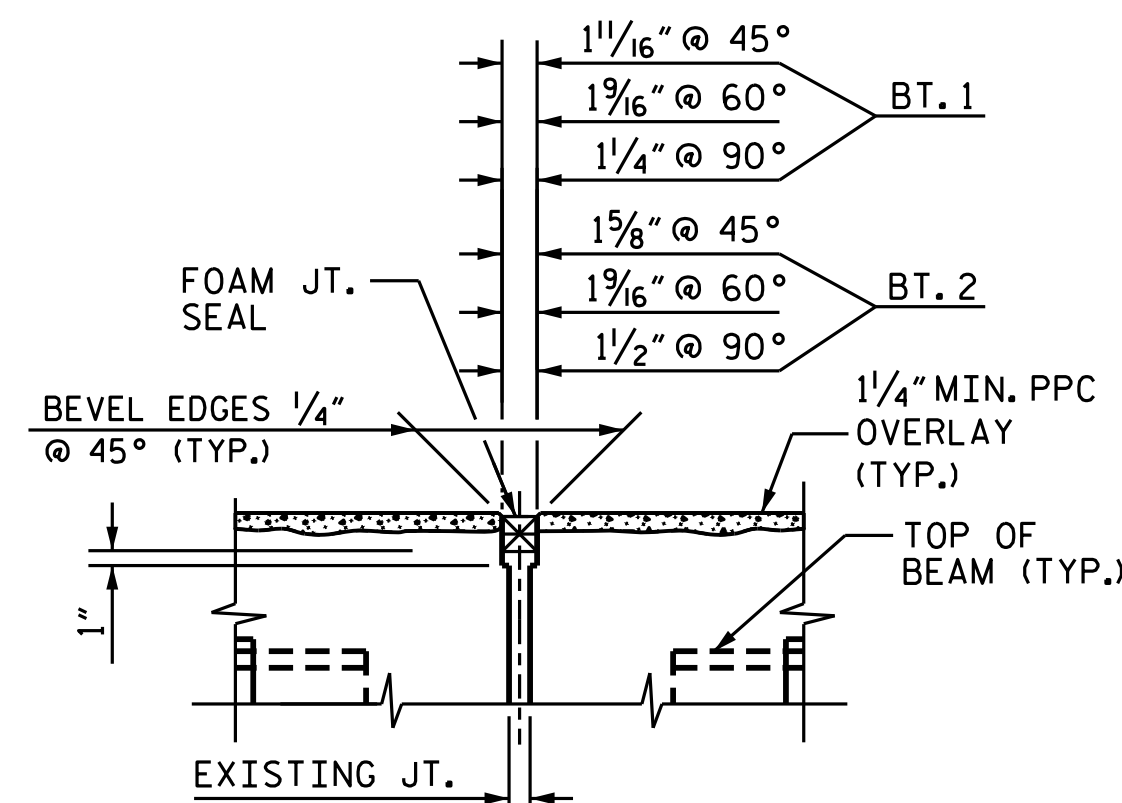


EXISTING JOINT

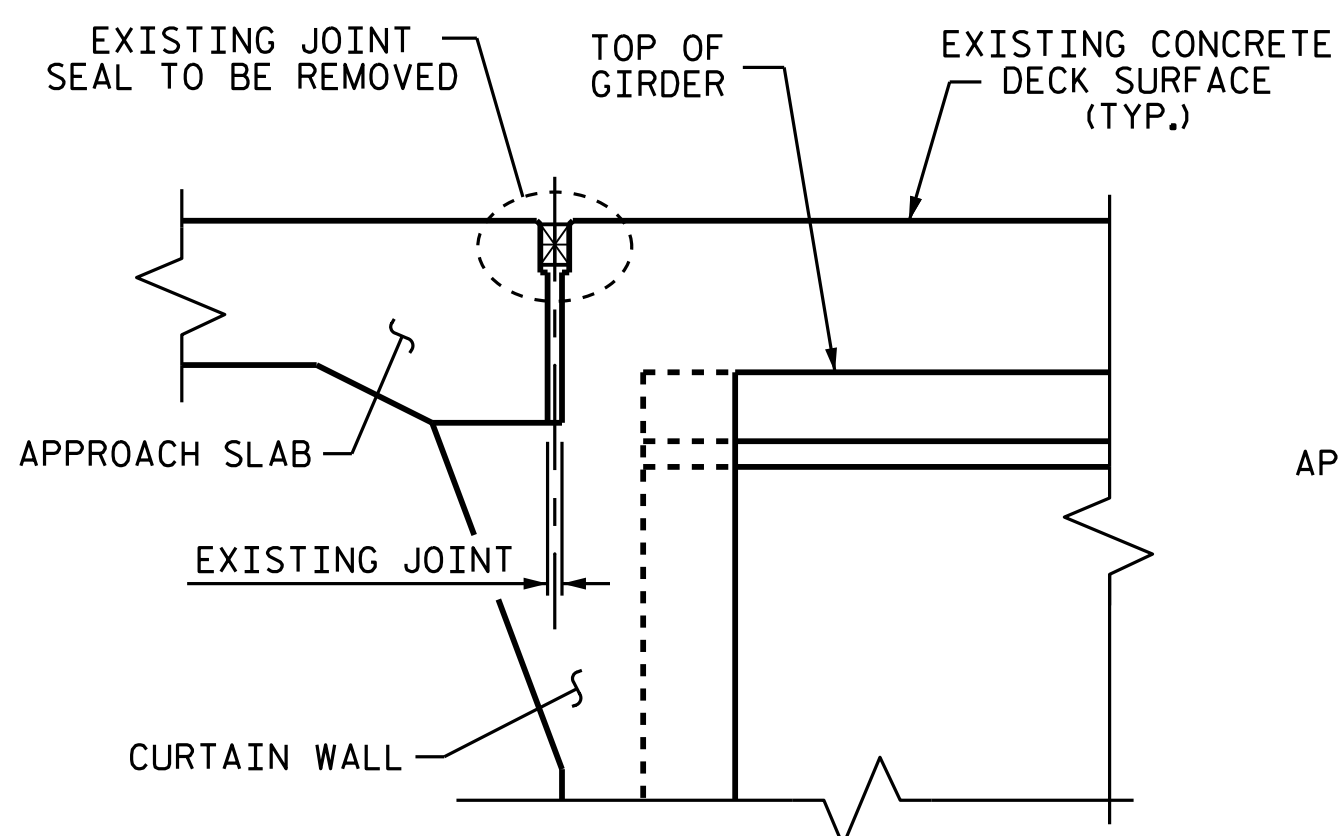
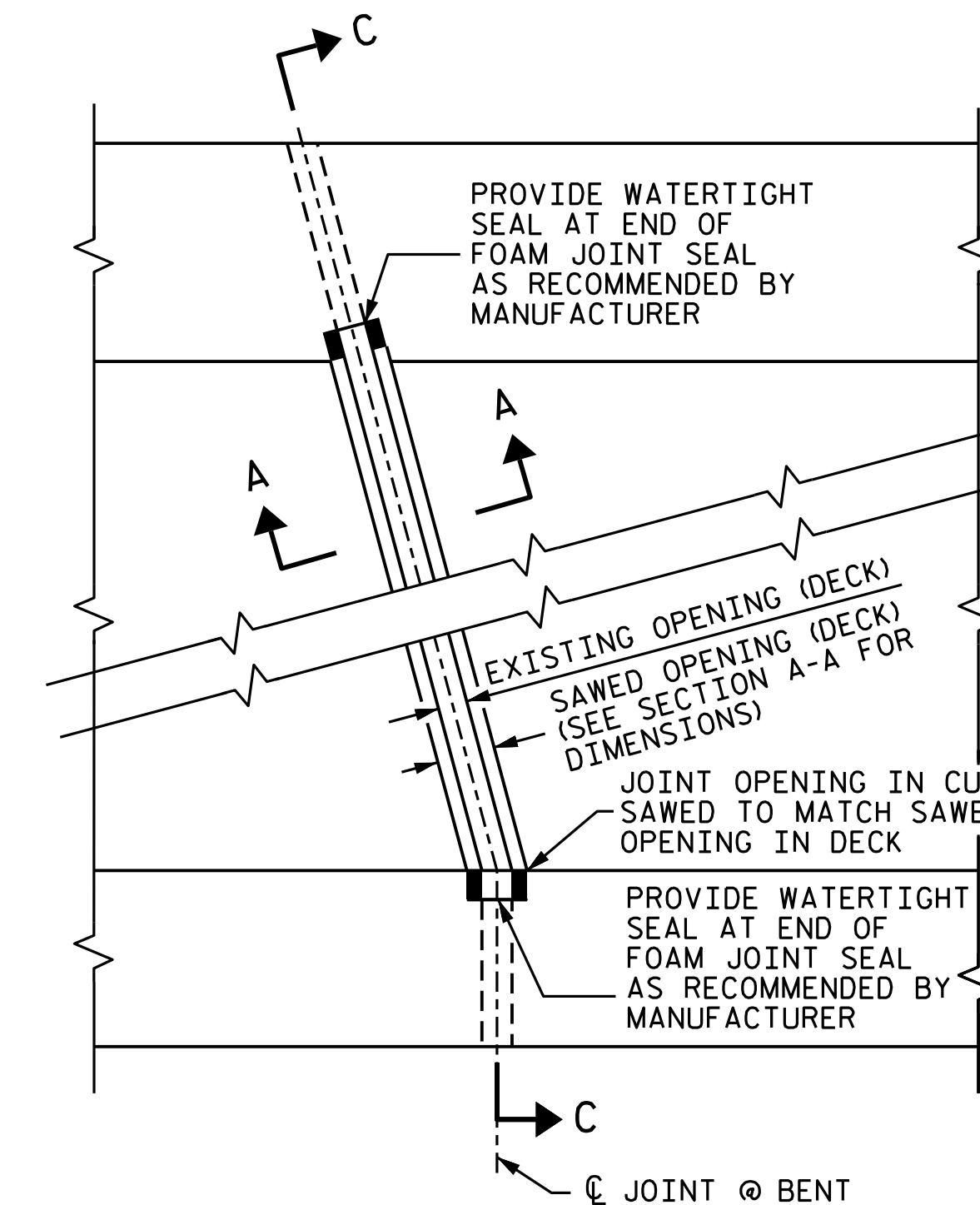


MINIMUM EXISTING JOINT DEMOLITION

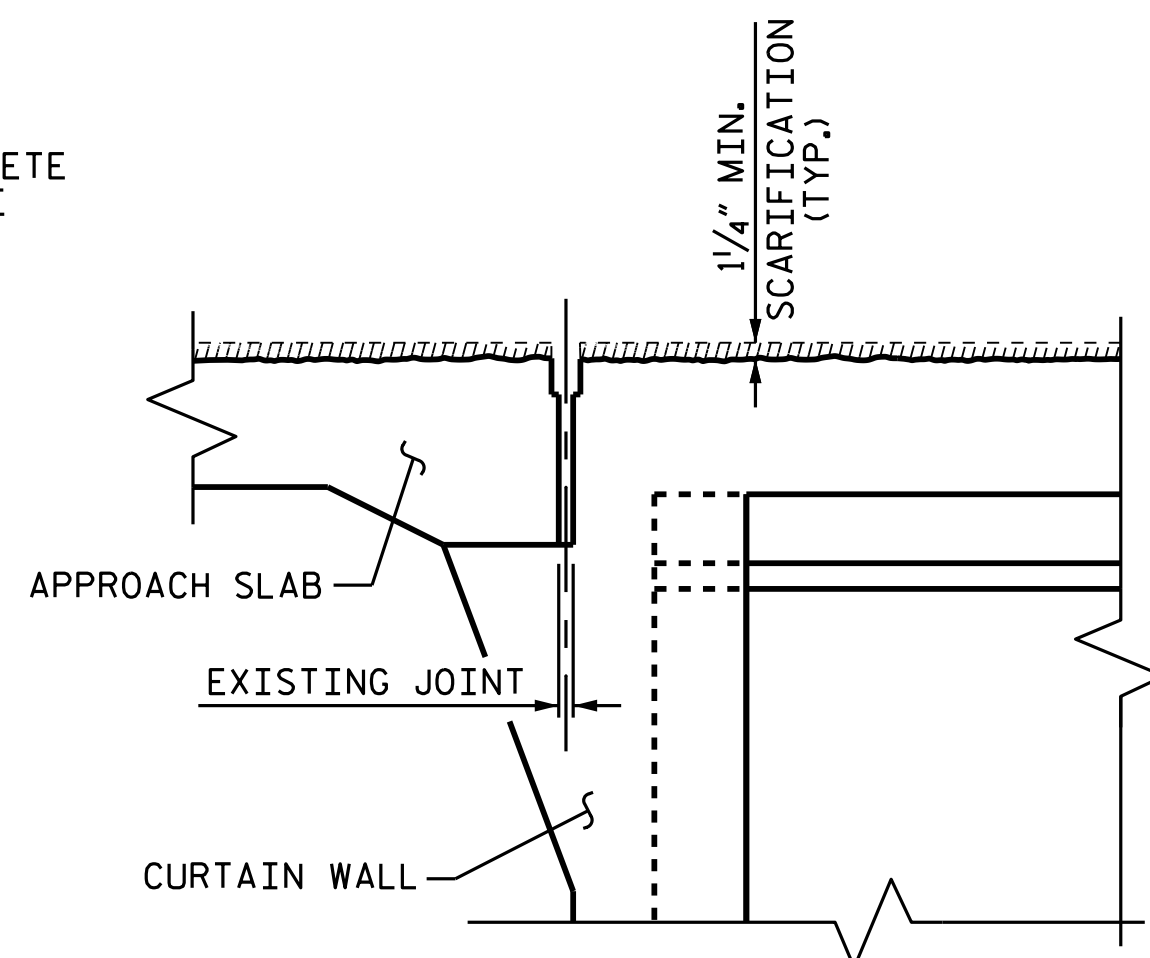


PROPOSED FOAM JOINT SEAL EXPANSION
ALL BENTS

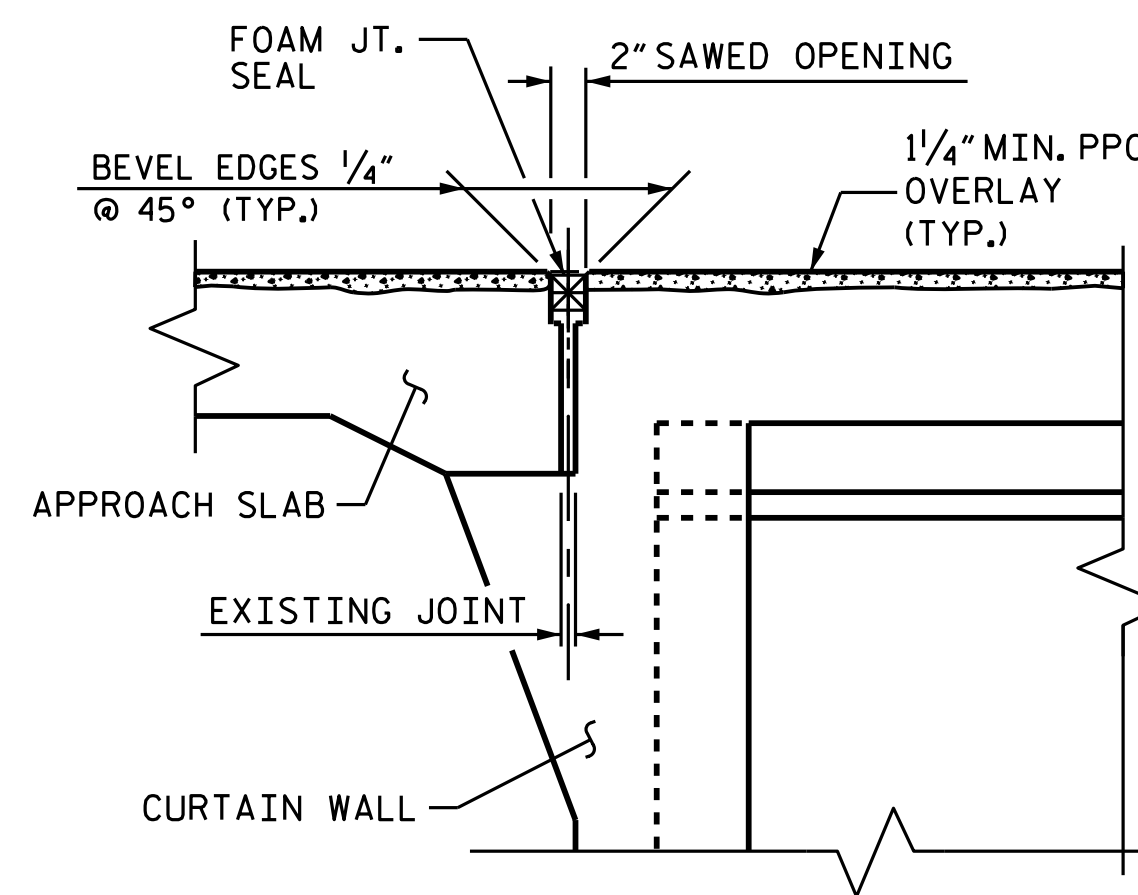
JOINT INSTALLATION SEQUENCE AT BENTS
SECTION A-A



EXISTING JOINT

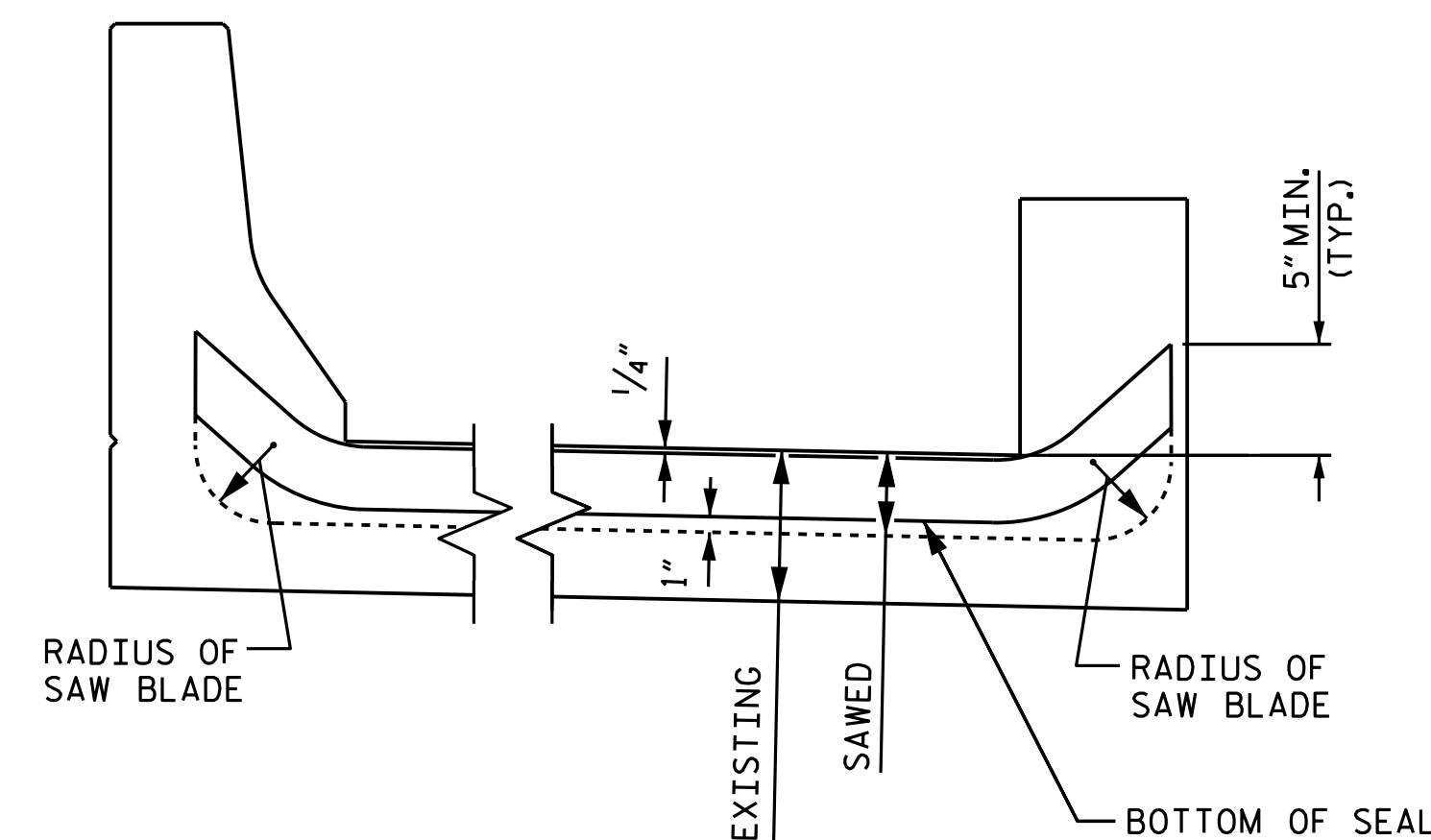


MINIMUM EXISTING JOINT DEMOLITION



PROPOSED FOAM JOINT SEAL

JOINT INSTALLATION SEQUENCE AT END BENTS
SECTION B-B



SECTION C-C

JOINT SEAL DETAILS AT BENTS

PROJECT NO. I-5825
MECKLENBURG COUNTY
 BRIDGE NO. 207

NOTES:

- CONTRACTOR SHALL FIELD VERIFY THE EXISTING SAWED OPENING PRIOR TO OBTAINING JOINT MATERIAL.
- FOR FOAM JOINT SEALS, SEE SPECIAL PROVISIONS.
- RETAIN ALL EXISTING REINFORCING STEEL. CLEAN AND REPAIR AS NEEDED.
- THE WIDTH OF THE UNCOMPRESSED FOAM JOINT MATERIAL SHALL BE 2".
- THE INSTALLED FOAM JOINT SEALS SHALL BE WATERTIGHT.
- THE CONTRACTOR WILL NOT BE PERMITTED TO FORM THE JOINT FOR THE FOAM JOINT SEAL IN LIEU OF SAWING THE JOINT.



Designed by:
 Nicholas Pierce 3/2/2018
 151106434008485

STATE OF NORTH CAROLINA
 DEPARTMENT OF TRANSPORTATION
 RALEIGH

SUPERSTRUCTURE
 JOINT DETAILS

DRAWN BY : E. K. POPE DATE : 12/17
 CHECKED BY : A. SORSENGINH DATE : 1/18

DOCUMENT NOT CONSIDERED
 FINAL UNLESS ALL
 SIGNATURES COMPLETED

REVISIONS						SHEET NO.
NO.	BY:	DATE:	NO.	BY:	DATE:	S-10
1			3			TOTAL SHEETS
2			4			31