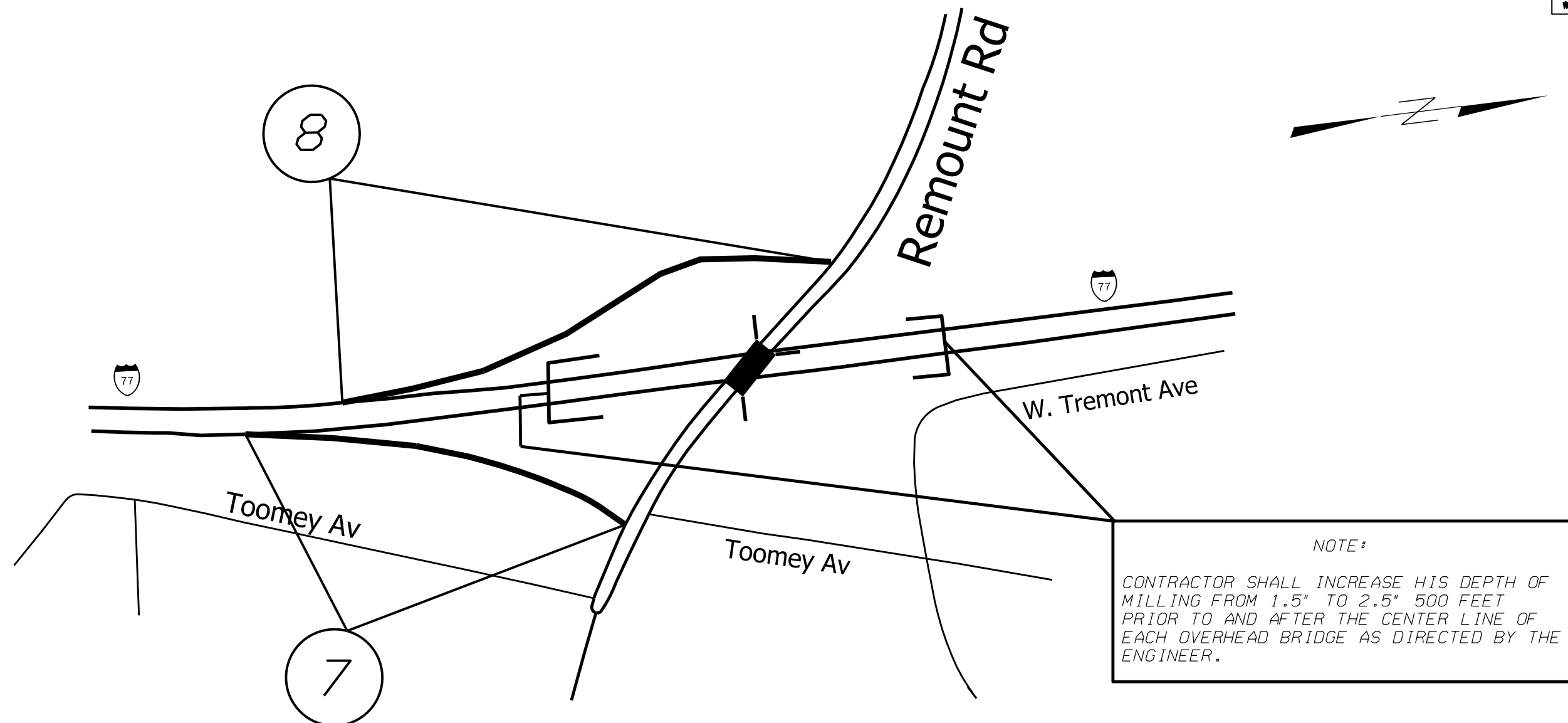


STATE	PROJECT NO.	SHEET NO.	TOTAL SHEETS
N.C.	I-5825	4	
WBS NO. 50468.3.1			



WORK AREA

DESCRIPTION

#7 I-77 NB OFF RAMP

FROM PHYSICAL GORE TO REMOUNT RD.
 APPROX. 557 FEET REMOVE ASPHALT OVERLAY
 AND REPAIR CONCRETE PAVEMENT AND
 ASPHALT SHOULDER. (SEE TYPICAL
 # 12, # 13, # 14)

#8 I-77 SB ON RAMP

FROM REMOUNT RD. TO PHYSICAL GORE
 APPROX. 990 FEET REPAIR CONCRETE
 PAVEMENT AND ASPHALT SHOULDERS. (SEE
 TYPICAL # 13, # 14)

NOTE:
 CONTRACTOR SHALL INCREASE HIS DEPTH OF
 MILLING FROM 1.5" TO 2.5" 500 FEET
 PRIOR TO AND AFTER THE CENTER LINE OF
 EACH OVERHEAD BRIDGE AS DIRECTED BY THE
 ENGINEER.

I-5825 I-77 PAVEMENT PRESERVATION		
SCALE	-NA-	REVISIONS
DATE	9/17	2/13/18
DWG. BY	JME	
DESIGN BY	JME	
APPROVED		

