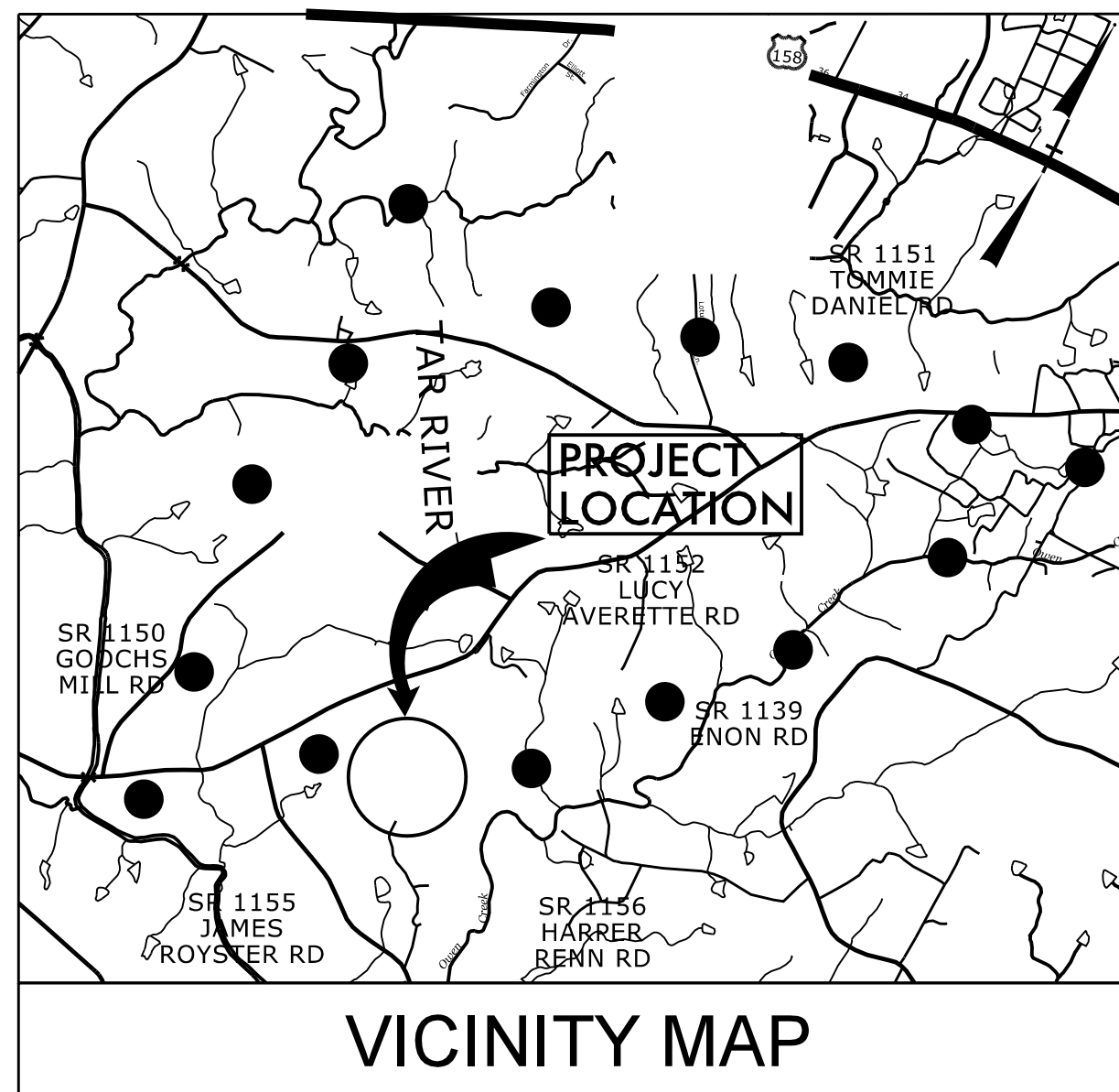


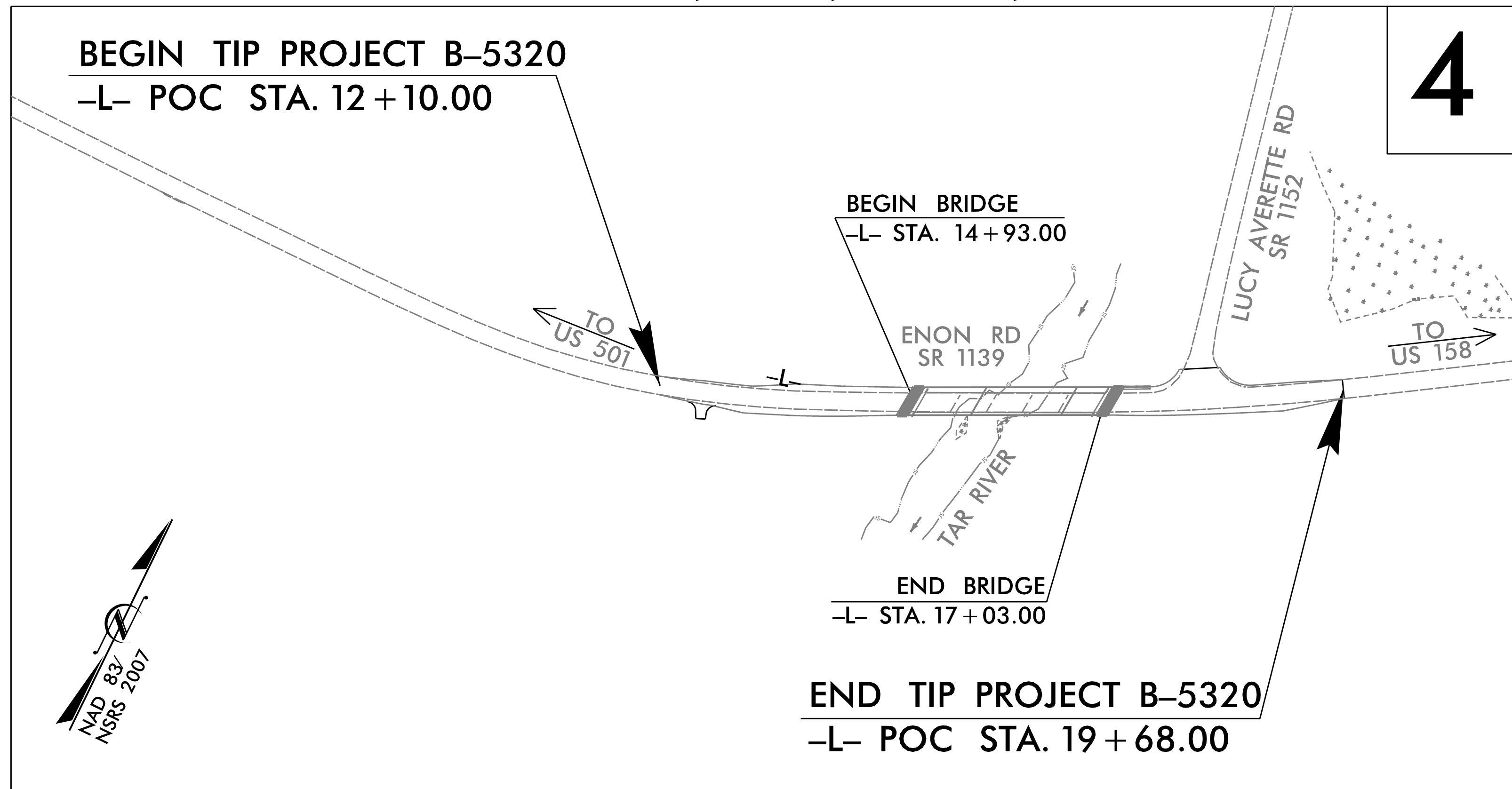
TIP PROJECT: B-5320



See Sheet 1A For Index of Sheets
See Sheet 1B For Conventional Symbols

STATE OF NORTH CAROLINA
DIVISION OF HIGHWAYS
**PLAN FOR PROPOSED
HIGHWAY EROSION CONTROL**
GRANVILLE COUNTY

**LOCATION: REPLACE BRIDGE NO. 96
OVER TAR RIVER ON SR 1139 (ENON RD)
TYPE OF WORK: GRADING, PAVING, DRAINAGE, AND STRUCTURE**



STATE	STATE PROJECT REFERENCE NO.	SHEET NO.	TOTAL SHEETS
N.C.	B-5320	EC-1	
STATE PROJ. NO.	F.A. PROJ. NO.	DESCRIPTION	

EROSION AND SEDIMENT CONTROL MEASURES

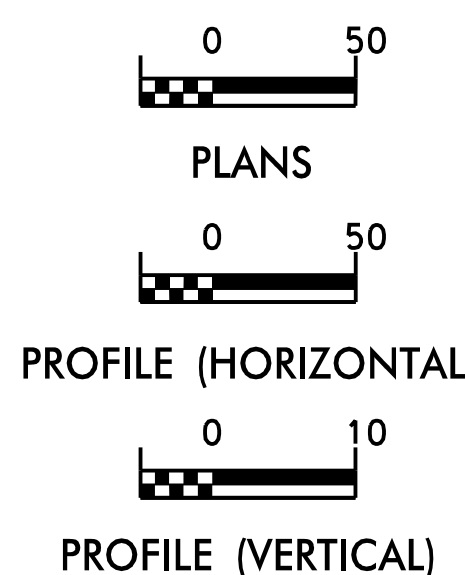
Std. #	Description	Symbol
1630.03	Temporary Silt Ditch	—
1630.05	Temporary Diversion	→ TD →
1605.01	Temporary Silt Fence	
1606.01	Special Sediment Control Fence	△△△
1622.01	Temporary Berms and Slope Drains	—
1630.02	Silt Basin Type B	▨
1633.01	Temporary Rock Silt Check Type-A	⊗
	Temporary Rock Silt Check Type-A with Matting and Polyacrylamide (PAM)	⊗
1633.02	Temporary Rock Silt Check Type-B	⊗
	Wattle / Coir Fiber Wattle	⊗
	Wattle / Coir Fiber Wattle with Polyacrylamide (PAM)	⊗
1634.01	Temporary Rock Sediment Dam Type-A	⊗
1634.02	Temporary Rock Sediment Dam Type-B	⊗
1635.01	Rock Pipe Inlet Sediment Trap Type-A	⊗
1635.02	Rock Pipe Inlet Sediment Trap Type-B	⊗
1630.04	Stilling Basin	⊗
1630.06	Special Stilling Basin	⊗
	Rock Inlet Sediment Trap:	
1632.01	Type A	A
1632.02	Type B	B
1632.03	Type C	C
	Skimmer Basin	⊗
	Tiered Skimmer Basin	⊗
	Infiltration Basin	⊗

THIS PROJECT CONTAINS
EROSION CONTROL PLANS
FOR CLEARING AND
GRUBBING PHASE OF
CONSTRUCTION.

ENVIRONMENTALLY
SENSITIVE AREA(S) EXIST
ON THIS PROJECT
*Refer To E. C. Special Provisions
for Special Considerations.*

THIS PROJECT HAS
BEEN DESIGNED TO
SENSITIVE WATERSHED
STANDARDS.

GRAPHIC SCALE



THESE EROSION AND SEDIMENT CONTROL PLANS COMPLY WITH THE REGULATIONS SET FORTH BY THE NCG-010000 GENERAL CONSTRUCTION PERMIT EFFECTIVE AUGUST 1, 2016 AND ISSUED BY THE NORTH CAROLINA DEPARTMENT OF ENVIRONMENT AND NATURAL RESOURCES DIVISION OF WATER RESOURCES.

Prepared In the Office of:
WSP
434 Fayetteville Street, Suite 1500 Raleigh, NC 27601
Tel. (919) 836-4040 www.wsp.com
License No. F-0891

Designed by:
CHARLES W. HEAFNER, PE, CFM 3440
NAME LEVEL III CERTIFICATION NO.

Reviewed In the Office of:
ROADSIDE ENVIRONMENTAL UNIT
693 Mountain Road
Hendersonville, NC 28791

2018 STANDARD SPECIFICATIONS

Reviewed by:
WES CHANDLER, PE

Highway Standard Drawings

The following roadway english standards as appear in "Roadway Standard Drawings"- Roadway Design Unit - N. C. Department of Transportation - Raleigh, N. C., dated January 2018 and the latest revision thereto are applicable to this project and by reference hereby are considered a part of these plans.

1604.01 Railroad Erosion Control Detail	1632.01 Rock Inlet Sediment Trap Type A
1605.01 Temporary Silt Fence	1632.02 Rock Inlet Sediment Trap Type B
1606.01 Special Sediment Control Fence	1632.03 Rock Inlet Sediment Trap Type C
1607.01 Gravel Construction Entrance	1633.01 Temporary Rock Silt Check Type A
1622.01 Temporary Berms and Slope Drains	1633.02 Temporary Rock Silt Check Type B
1630.01 Riser Basin	1634.01 Temporary Rock Sediment Dam Type A
1630.02 Silt Basin Type B	1634.02 Temporary Rock Sediment Dam Type B
1630.03 Temporary Silt Ditch	1635.01 Rock Pipe Inlet Sediment Trap Type A
1630.04 Stilling Basin	1635.02 Rock Pipe Inlet Sediment Trap Type B
1630.05 Temporary Diversion	1640.01 Coir Fiber Baffle
1630.06 Special Stilling Basin	1645.01 Temporary Stream Crossing
1631.01 Matting Installation	