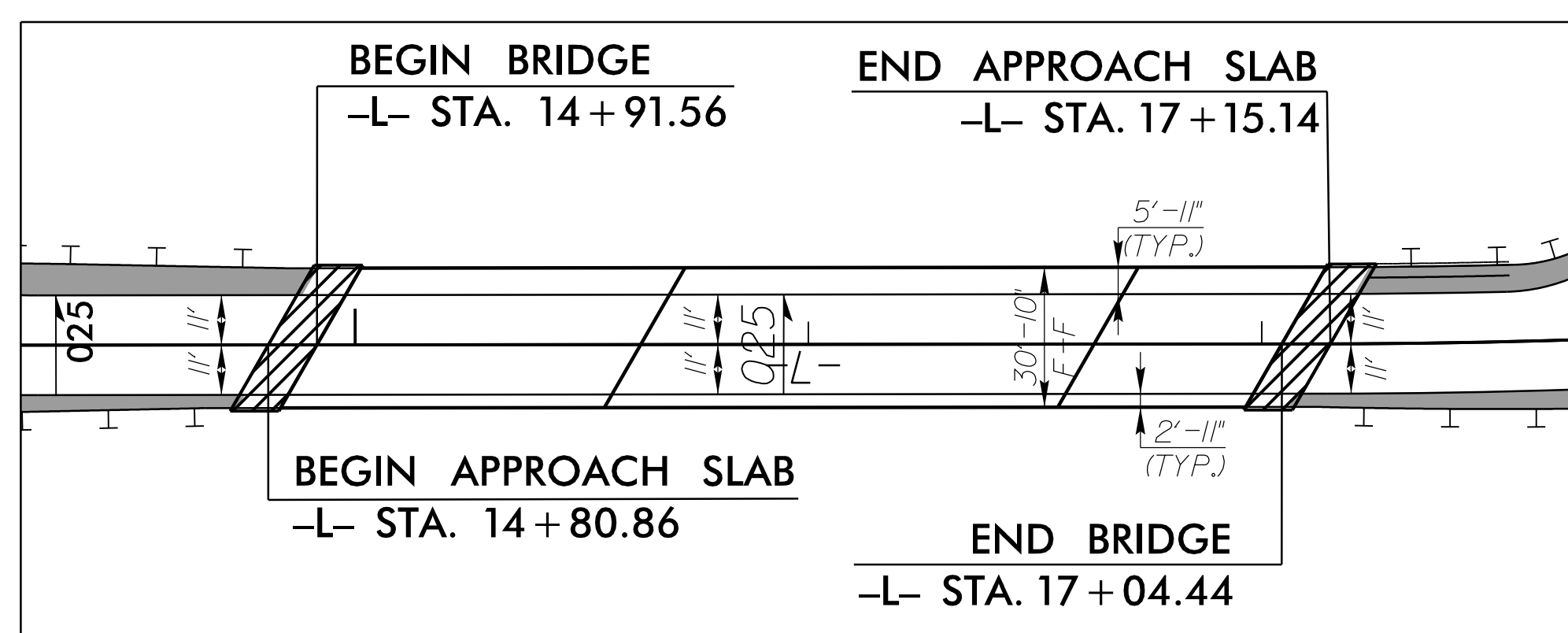


8/17/19

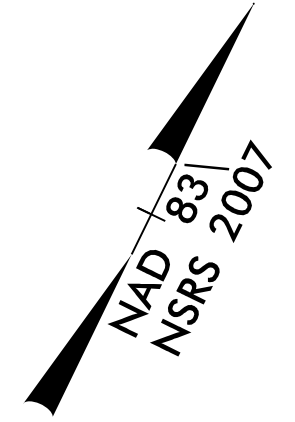


NOTE: NOT TO SCALE

BEGIN PROJECT B-5320
 -L- POC STA. 12+10.00

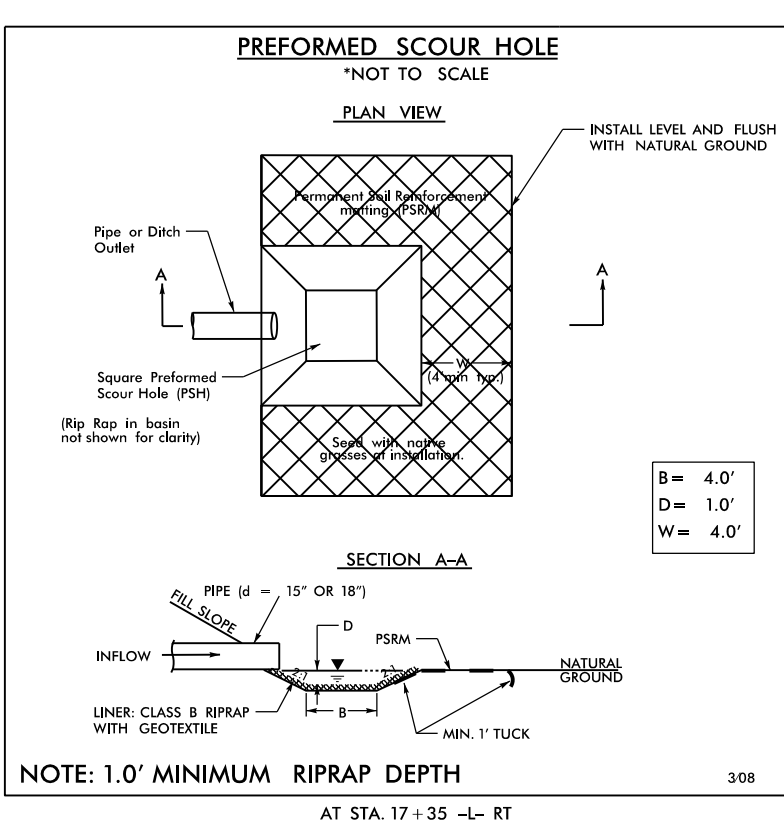
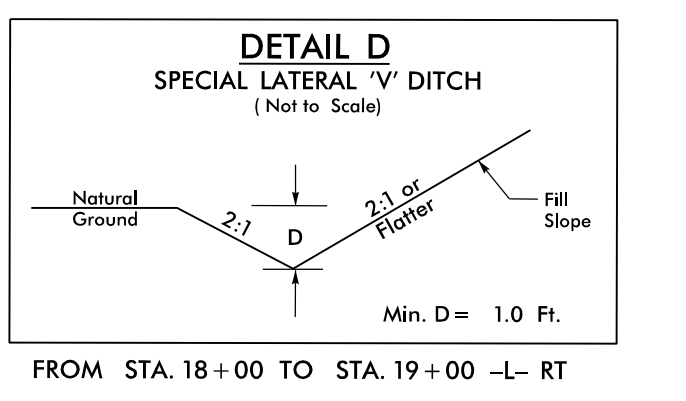
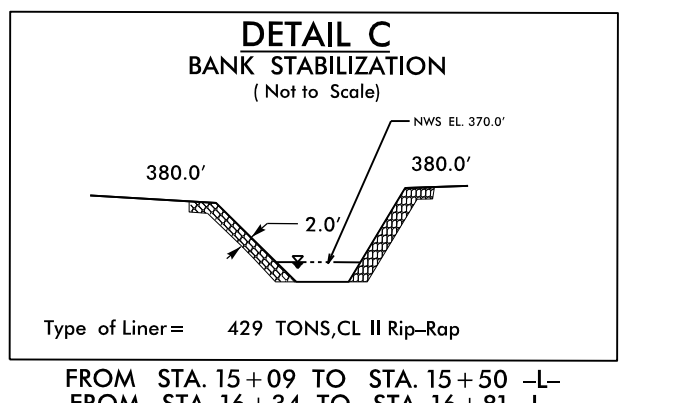
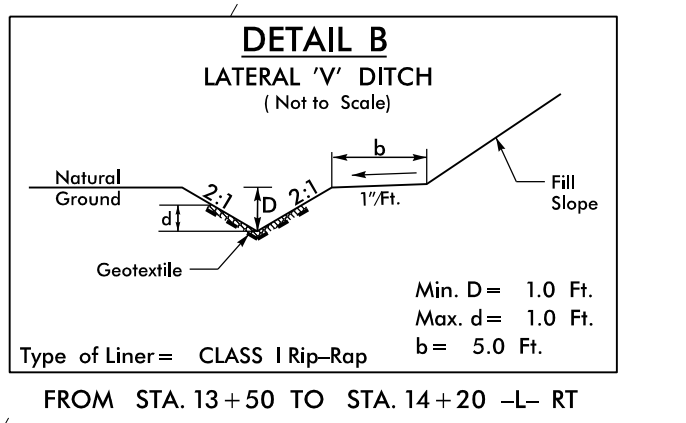
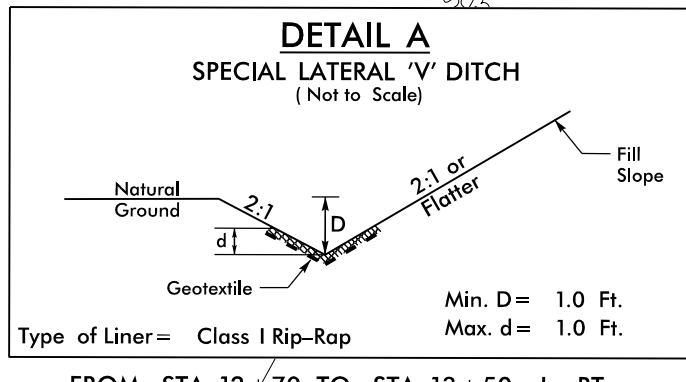
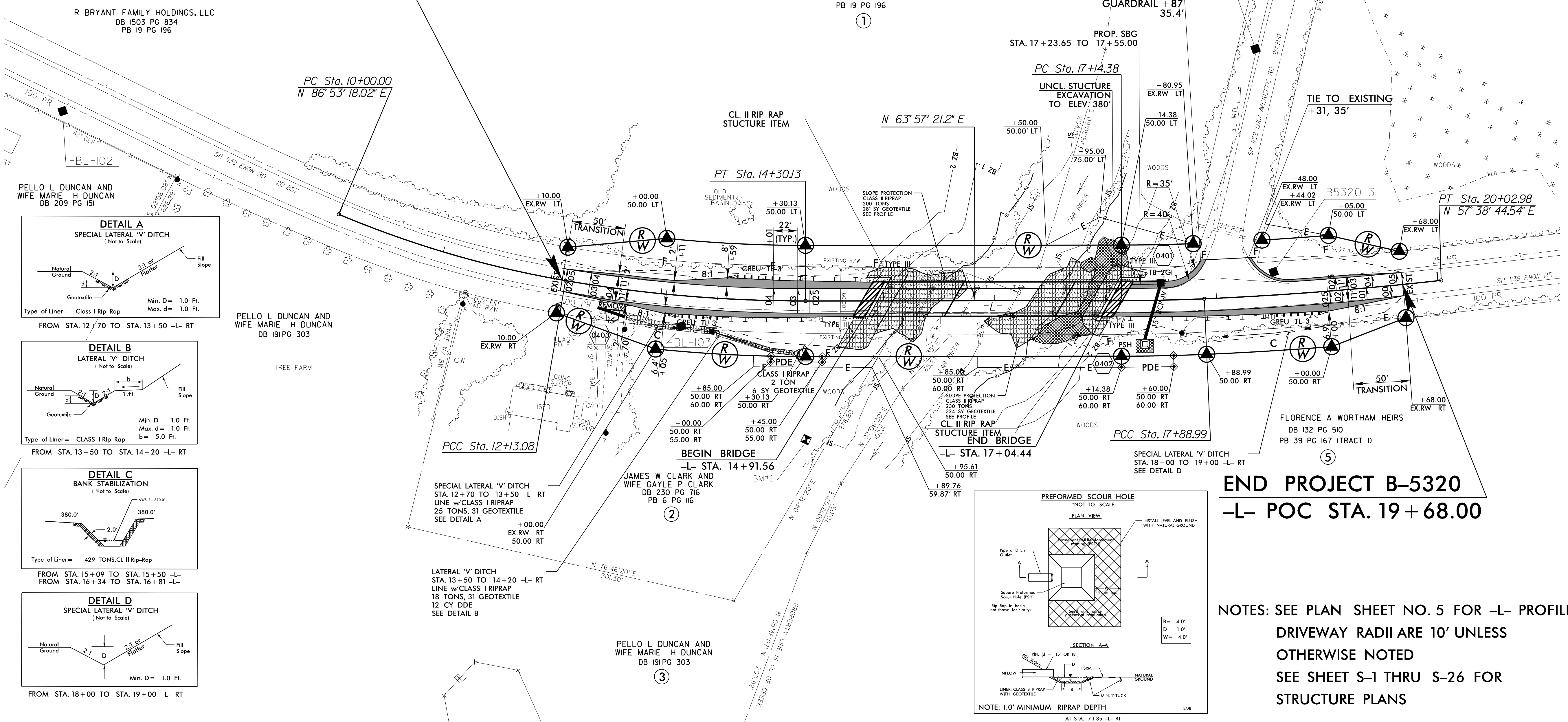
-L- CURVE DATA

PI Sta	Δ	D	L	T	R	BACK
11+07.01	13° 08' 24" (LT)	6' 10' 00.7"	213.08'	107.01'	929.09'	N 86° 53' 18.02" E
13+21.87	9° 47' 32.6" (LT)	4' 30' 41.3"	217.06'	108.79'	1,270.00'	SE = 50 MPH SE = 0.04 RO = 88'
17+51.69	2° 26' 34.0" (LT)	3' 16' 26.6"	74.61'	37.31'	1,750.00'	SE = EXISTING
18+96.03	3° 52' 02.7" (LT)	1' 48' 26.3"	213.99'	107.03'	3,170.24'	AHEAD = N 57° 38' 44.54" E



wsp
 434 Fayetteville Street Suite 1500
 Raleigh, NC 27601 - 919.836.4040
 www.wspgroup.com
 LICENSE NO. F-0891

PROJECT REFERENCE NO. B-5320	SHEET NO. 4
ROADWAY DESIGN ENGINEER	HYDRAULICS ENGINEER
<i>Holly Christenbury</i> Professional Seal 49/2018 043139	<i>Vidya Mohandas</i> Professional Seal 09/2018 043232
DOCUMENT NOT CONSIDERED FINAL UNLESS ALL SIGNATURES COMPLETED	



END PROJECT B-5320
 -L- POC STA. 19+68.00

NOTES: SEE PLAN SHEET NO. 5 FOR -L- PROFILE
 DRIVEWAY RADII ARE 10' UNLESS
 OTHERWISE NOTED
 SEE SHEET S-1 THRU S-26 FOR
 STRUCTURE PLANS

REVISIONS

3/1/2018
R:\Projects\N\Proj\B5320\Redy_PSH4.dgn
11:54:02 AM