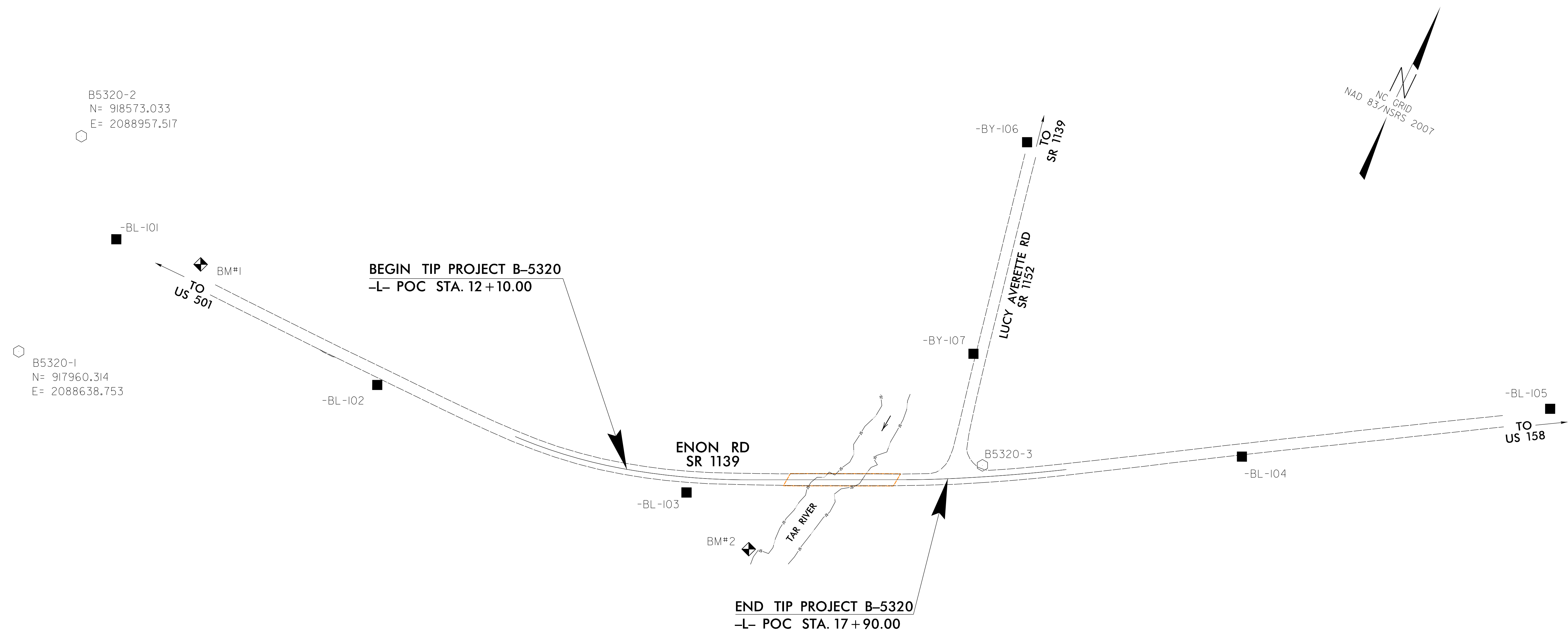


SURVEY CONTROL SHEET B-5320

PROJECT REFERENCE NO.	SHEET NO.
B-5320	1C-1
Location and Surveys	



BL POINT	DESC.	NORTH	EAST	ELEVATION	L STATION	OFFSET
101	BL101	918799.5750	2089438.7540	394.79	OUTSIDE PROJECT LIMITS	
102	BL102	918769.7920	2089975.9180	405.55	OUTSIDE PROJECT LIMITS	
103	BL103	918839.8830	2090561.2720	396.06	13+20.59	27.41 RT
3	B5320-3	919117.1680	2091018.9840	387.99	18+52.75	20.67 LT
104	BL104	919336.0480	2091431.9530	388.79	OUTSIDE PROJECT LIMITS	
105	BL105	919656.5640	2091893.1790	406.98	OUTSIDE PROJECT LIMITS	

BY POINT	DESC.	NORTH	EAST	ELEVATION	L STATION	OFFSET
106	BY106	919675.1270	2090836.4060	386.05	19+97.04	593.24 LT
107	BY107	919290.5860	2090916.4000	385.50	18+49.10	222.12 LT

.....
 BM1 ELEVATION = 403.74
 N 918825 E 2089595
 L STATION 10+00.00
 N 87°21'43.7" W DIST 645.68
 RR SPIKE IN 20" OAK

.....
 BM2 ELEVATION = 381.99
 N 918797 E 2090707
 L STATION 14+30.00 125 RIGHT
 RR SPIKE IN 18" ELM

DATUM DESCRIPTION

THE LOCALIZED COORDINATE SYSTEM DEVELOPED FOR THIS PROJECT IS BASED ON THE STATE PLANE COORDINATES ESTABLISHED BY NCDOT FOR MONUMENT "B5320-3" WITH NAD 83/NSRS 2007 STATE PLANE GRID COORDINATES OF NORTHING: 919,117.168(ft) EASTING: 2,0910,18.984(ft) ELEVATION: 387.99'(ft)
 THE AVERAGE COMBINED GRID FACTOR USED ON THIS PROJECT (GROUND TO GRID) IS: 0.9999823200
 THE N.C. LAMBERT GRID BEARING AND LOCALIZED HORIZONTAL GROUND DISTANCE FROM "B5320-3" TO -L- STATION 12+10.00 IS S 63°22'13.8" W 640.27'
 ALL LINEAR DIMENSIONS ARE LOCALIZED HORIZONTAL DISTANCES VERTICAL DATUM USED IS NAVD 88

NOTES:

- INDICATES GEODETIC CONTROL MONUMENTS USED OR SET FOR HORIZONTAL AND VERTICAL PROJECT CONTROL BY THE NCDOT LOCATION AND SURVEYS UNIT.
- SITE CALIBRATION INFORMATION HAS NOT BEEN PROVIDED FOR THIS PROJECT. IF FURTHER INFORMATION IS NEEDED, PLEASE CONTACT THE LOCATION AND SURVEYS UNIT.

GEOID G09NC
NOTE: DRAWING NOT TO SCALE