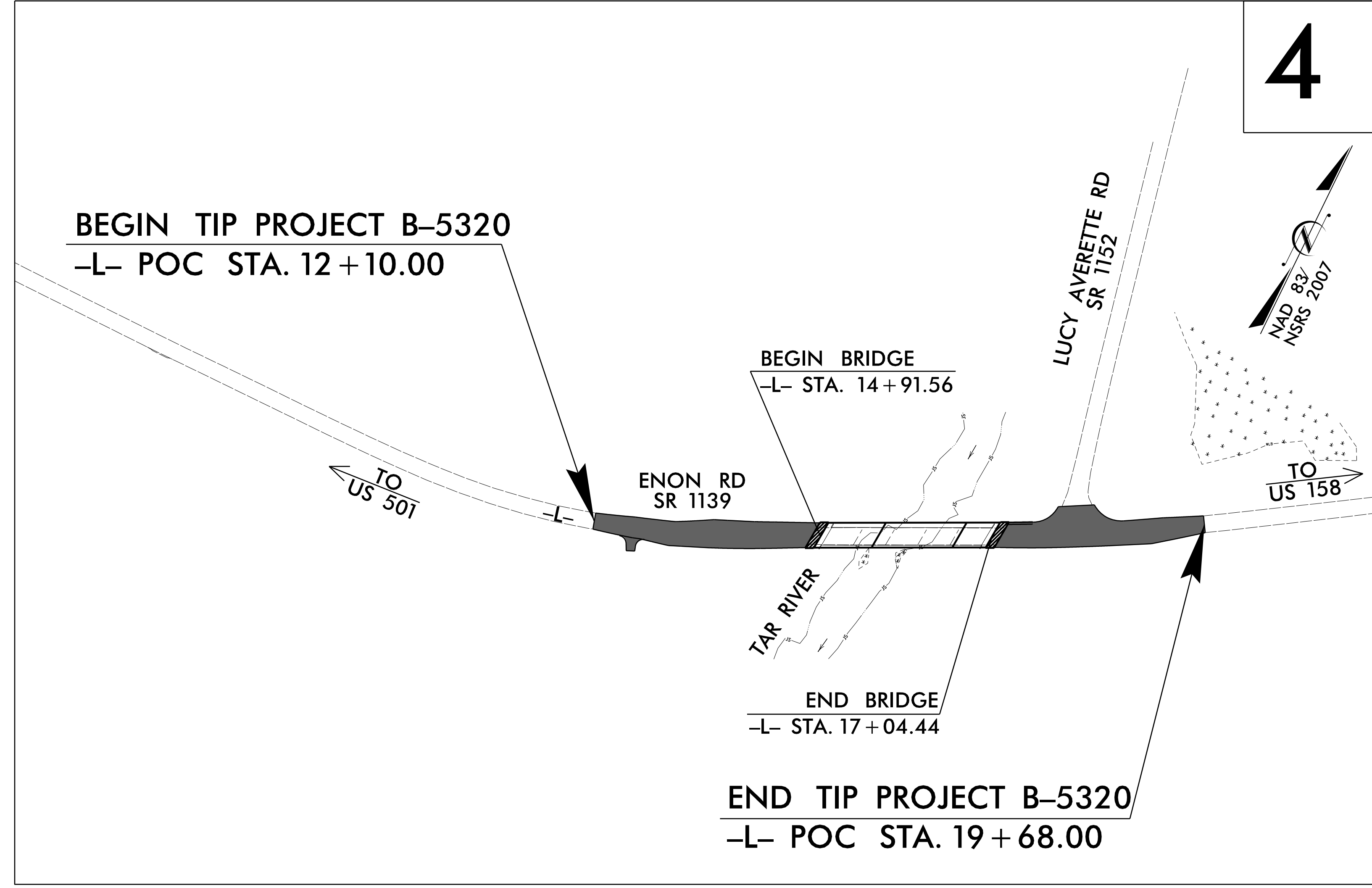
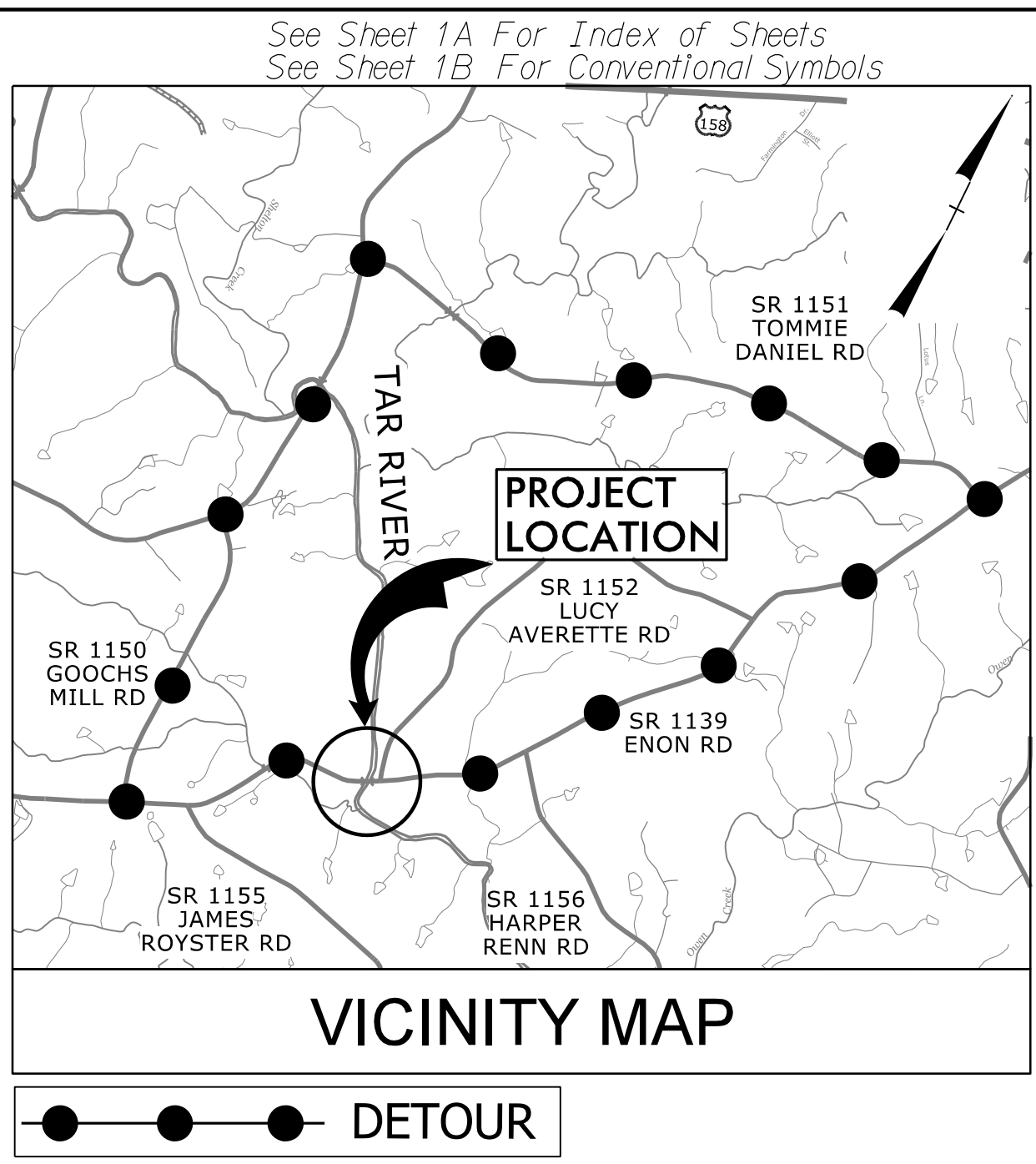


STATE	STATE PROJECT REFERENCE NO.	SHEET NO.	TOTAL SHEETS
N.C.	<b>B-5320</b>	<b>1</b>	
STATE PROJ. NO.	F.A. PROJ. NO.	DESCRIPTION	
46034.1.1	BRZ-1139(4)	PE	
46034.2.1	BRZ-1139(4)	RW & UTILITY	
46034.3.1	BRZ-1139(4)	CONST.	

STATE OF NORTH CAROLINA  
 DIVISION OF HIGHWAYS  
**GRANVILLE COUNTY**

**LOCATION: REPLACE BRIDGE NO. 96.  
 OVER TAR RIVER ON SR 1139 (ENON RD)  
 TYPE OF WORK: GRADING, PAVING, DRAINAGE, AND  
 STRUCTURE**

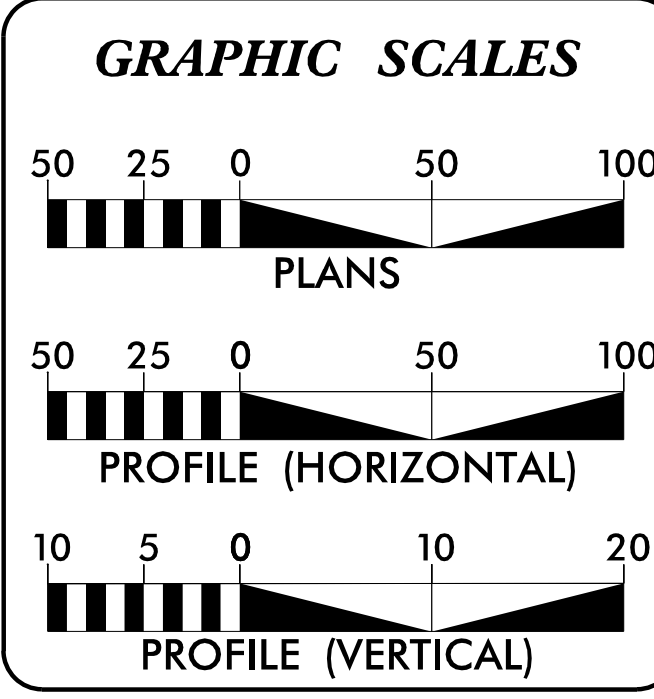


**TIP PROJECT: B-5320**

**CONTRACT: C204099**

DOCUMENT NOT CONSIDERED FINAL  
 UNLESS ALL SIGNATURES COMPLETED

NCDOT CONTACT: **DAVID STUTTS, PE**  
 STRUCTURES MANAGEMENT UNIT



**DESIGN DATA**

ADT 2018 =	1409
ADT 2038 =	2105
K =	9 %
D =	55 %
T =	8 % *
V =	60 MPH
* (TTST = 3% + DUAL = 5%)	
FUNC CLASS =	MINOR COLLECTOR SUBREGIONAL TIER

**PROJECT LENGTH**

LENGTH ROADWAY PROJECT B-5320	=	0.104 MI
LENGTH STRUCTURE PROJECT B-5320	=	0.040 MI
TOTAL LENGTH PROJECT B-5320	=	0.144 MI

PREPARED IN THE OFFICE OF:

**wsp** WSP  
 434 Fayetteville Street, Suite 1500 Raleigh, NC 27601  
 Tel. (919) 836-4040 www.wsp-pb.com  
 License No. F-0891

FOR THE NORTH CAROLINA DEPARTMENT OF TRANSPORTATION  
 2018 STANDARD SPECIFICATIONS

RIGHT OF WAY DATE: SEPTEMBER 15, 2017	<b>RONYELL A. THIGPEN, PE</b> PROJECT ENGINEER
LETTING DATE: MAY 15, 2018	<b>HOLLY CHRISTENBURY, PE</b> PROJECT DESIGN ENGINEER

**HYDRAULICS ENGINEER**

DocuSigned by:  
**Adya Mohandas**  
 907C26E6E0B404  
 SIGNATURE: P.E.

**ROADWAY DESIGN ENGINEER**

DocuSigned by:  
**Holly Christenbury**  
 21C00B45712461  
 SIGNATURE: P.E.

