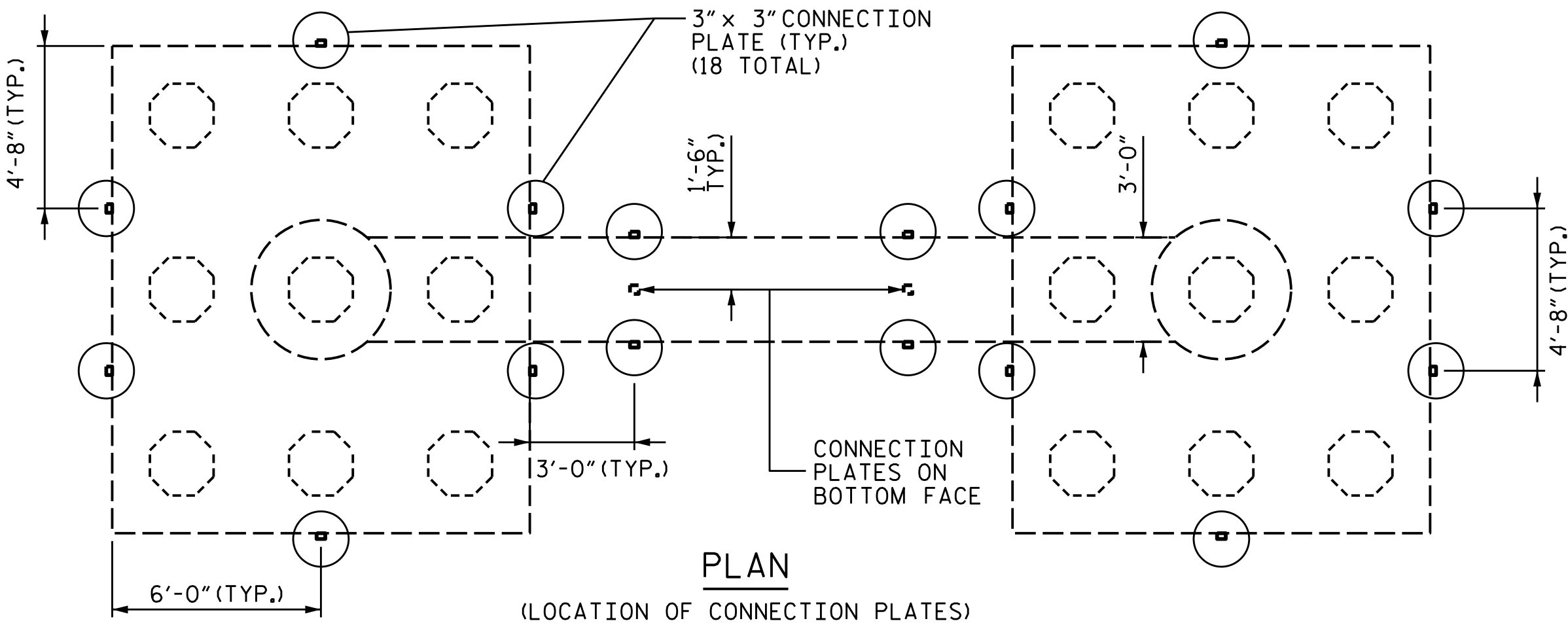
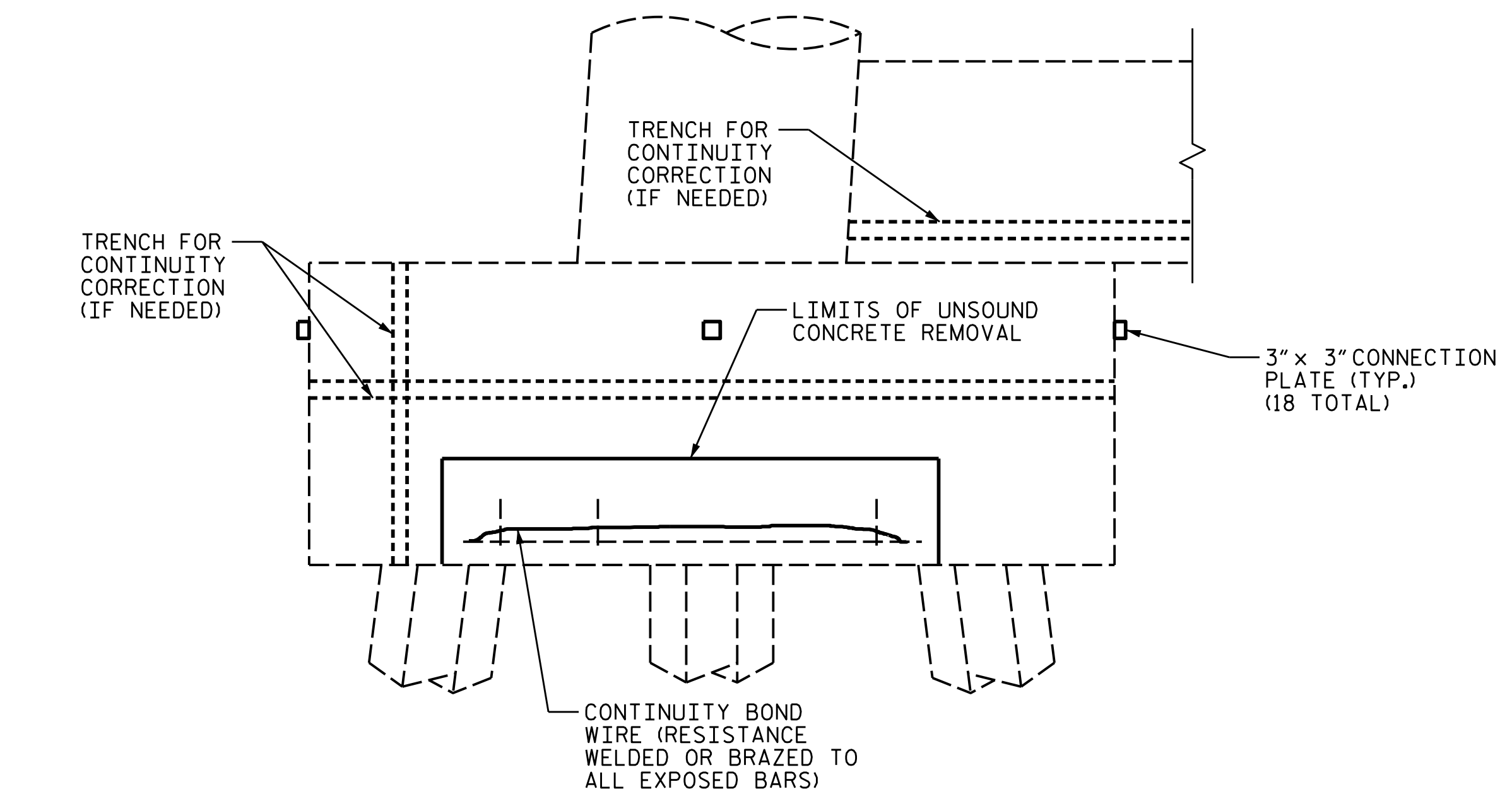


ELEVATION
(SOUTH OR NORTH FACE)

REPAIR PER CONCRETE RESTORATION SHEETS



PLAN
(LOCATION OF CONNECTION PLATES)

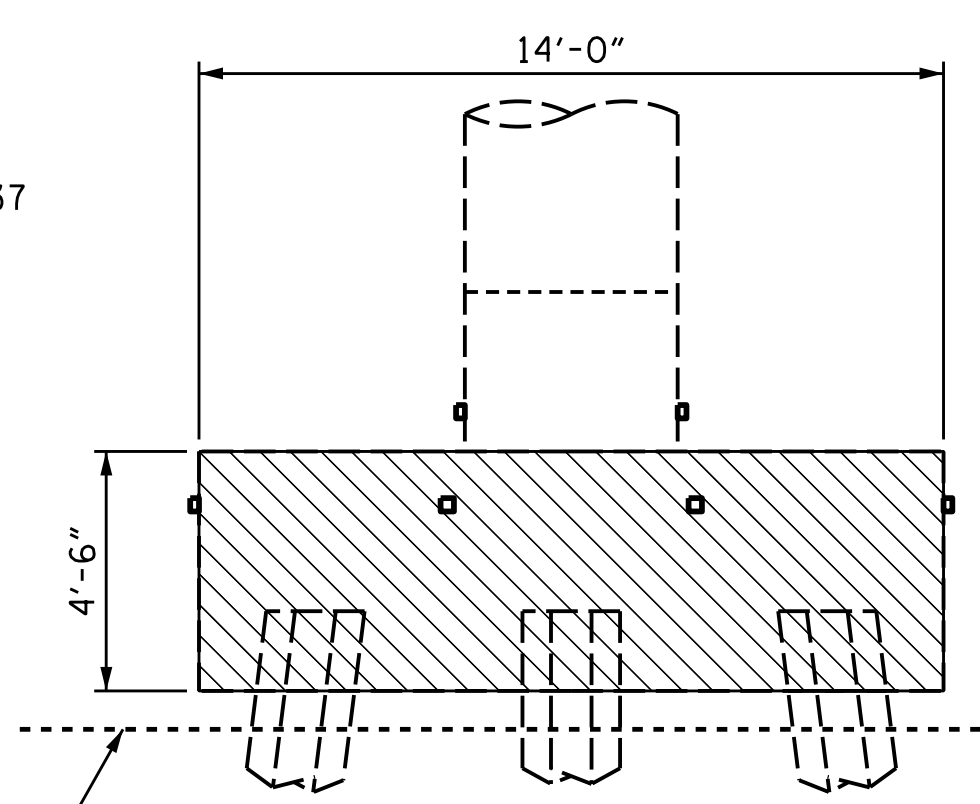


CONTINUITY DETAIL

ADD MONITORING PORTS AND JUNCTION BOXES TO 2 OF THE PROPOSED BENTS FOR METALIZING, SEE SHEET S-37 FOR DETAILS

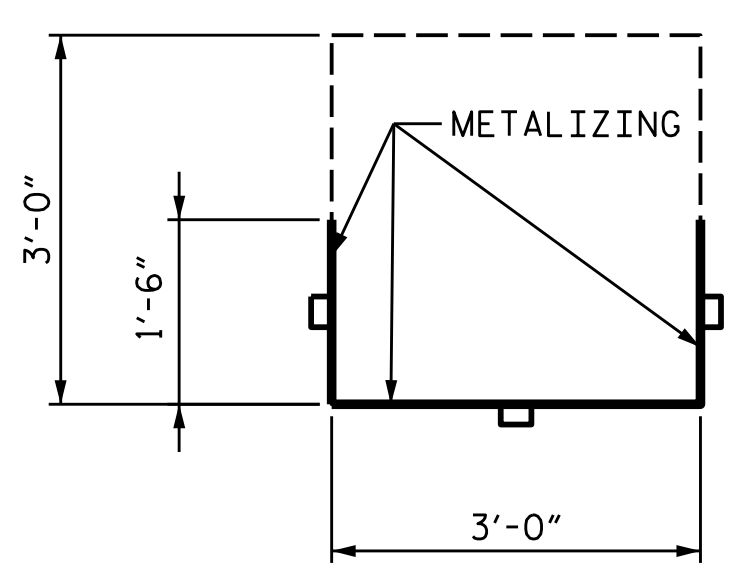
APPROX. AVERAGE GROUND EL.

MLW EL = -2.0

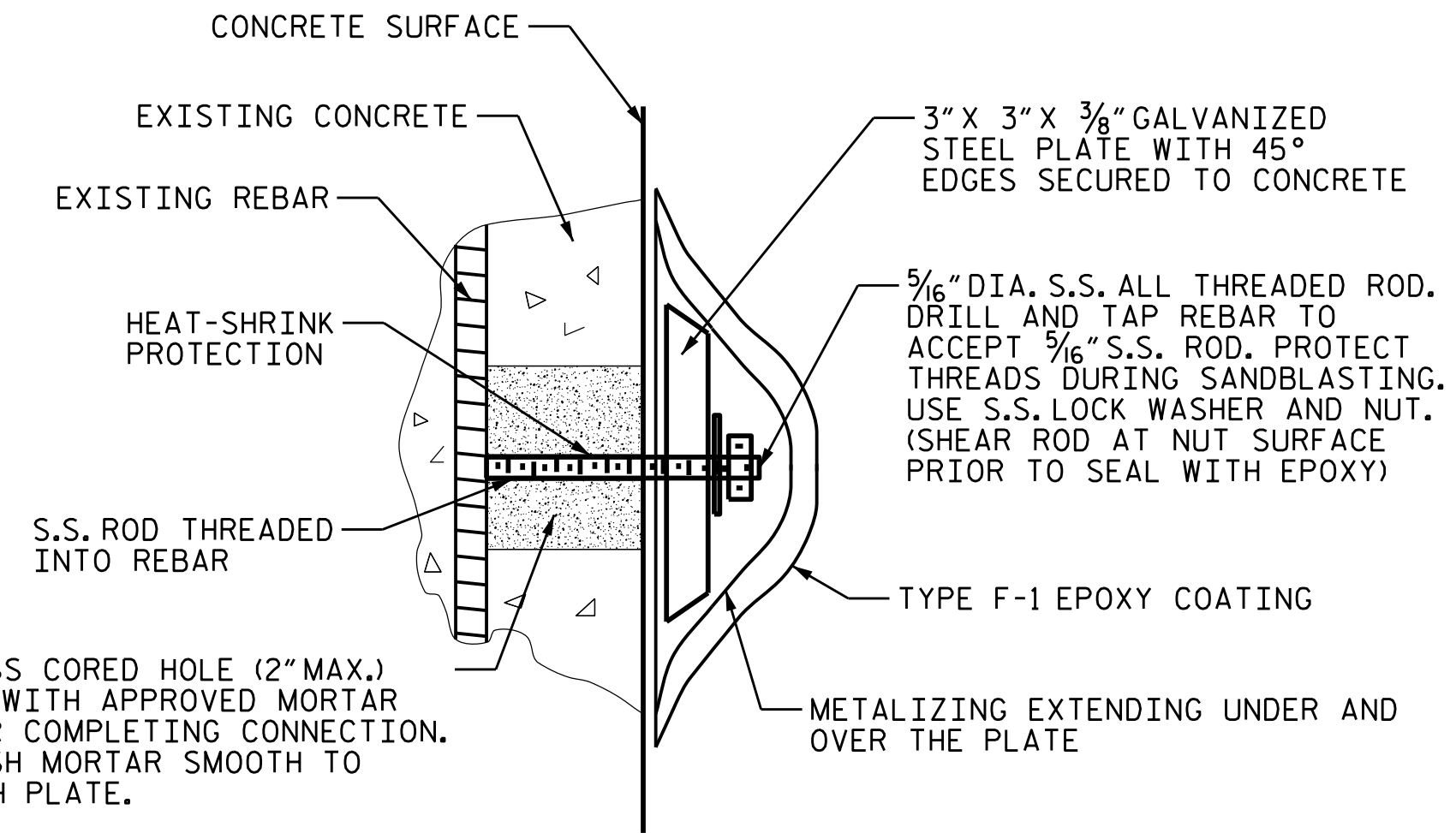


ELEVATION
(EAST OR WEST FACE)

APPROX. AVERAGE GROUND EL.



SECTION A-A
(LIMITS OF METALIZING)



ACCESS CORED HOLE (2\"/>

CONNECTION PLATE DETAIL FOR REBARS

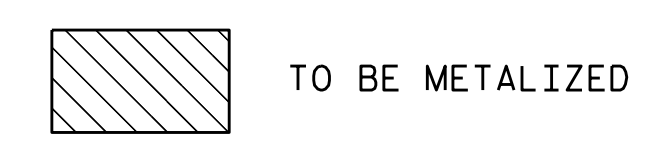
METALIZING NOTES:

1. NO METALIZING SHALL BE PERFORMED UNTIL THE CONCRETE RESTORATION HAS BEEN APPROVED BY THE ENGINEER. METALIZE AT NO LESS THAN 10 (TEN) DAYS AFTER PLACING CONCRETE, BUT NO MORE THAN 90 (NINETY) DAYS. CONNECT METALIZING CONNECTION PLATE IMMEDIATELY AFTER COMPLETING METALIZING.
2. APPLY A ZINC SILICATE OVERCOAT AT NO MORE THAN 72 HOURS AFTER METALIZING.
3. COAT CONNECTION PLATE WITH EPOXY AT NO MORE THAN 96 HOURS AFTER APPLICATION OF ZINC SILICATE OVERCOAT.

NOTES:

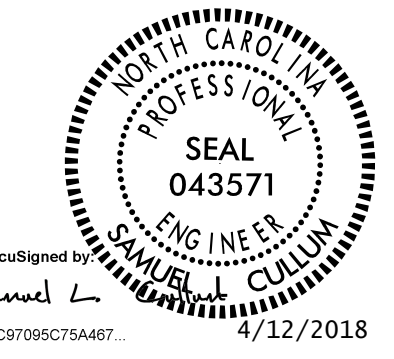
1. REMOVE ALL UNSOUND CONCRETE FROM THE BENT FOOTINGS IN ACCORDANCE WITH CONCRETE RESTORATION DETAILS AND PROJECT SPECIAL PROVISIONS FOR CONCRETE REPAIR.
2. THE CONTRACTOR SHALL SUBMIT A PLAN FOR CONTROL AND DISPOSAL OF DEBRIS TO THE ENGINEER FOR APPROVAL.
3. FOR SPALLS OR DELAMINATIONS ON THE FOOTINGS GREATER THAN 2'-0\"/>
- 4. FOR ANY CONCRETE AREAS THAT WOULD BE ISOLATED FROM PROPOSED CONTINUITY BY EXISTING SUPERFICIAL CRACKING, FILL CRACKS WITH EPOXY PRIOR TO METALIZING PER PROJECT SPECIAL PROVISIONS FOR EPOXY INJECTION OF CRACKS.
- 5. ALL VERTICAL FACES OF THE FOOTING SHALL BE METALIZED. CONNECTION BETWEEN PLATE AND REINFORCING STEEL SHALL BE PROVIDED VIA A 3/16\"/>
- 6. CHECK INTERBAR CONTINUITY. REINFORCING BARS REQUIRING CONTINUITY CORRECTION SHALL BE MADE CONTINUOUS USING STEEL WIRE RESISTANCE WELDED OR BRAZED TO EVERY REBAR. ALL EXPOSED BARS SHALL BE MADE CONTINUOUS. COAT ALL CONTINUITY CORRECTION WELDS WITH NON-CONDUCTIVE EPOXY.
- 7. CHECK ELECTRICAL CONTINUITY BETWEEN ALL PLATES IN ACCORDANCE WITH THE PROJECT SPECIAL PROVISIONS FOR CATHODIC PROTECTION.
- 8. METALIZE AND PLACE CONNECTION PLATES IN ACCORDANCE WITH PROJECT SPECIAL PROVISIONS FOR CATHODIC PROTECTION.
- 9. APPLY A ZINC SILICATE OVERCOAT TO THE METALIZED AREAS AS DESCRIBED IN THE PROJECT SPECIAL PROVISIONS FOR CATHODIC PROTECTION-INTERMEDIATE BENT METALIZING. THE ENGINEER MUST APPROVE THE METALIZING PRIOR TO THE OVERCOAT APPLICATION.
- 10. SEE PROJECT SPECIAL PROVISIONS FOR ADDITIONAL METALIZING REQUIREMENTS AND ACCEPTANCE CRITERIA. (PSP: CATHODIC PROTECTION-INTERMEDIATE BENT METALIZING)
- 11. SEQUENCE CLEANING AND COATING IN ORDER TO AVOID DELETERIOUS SUBSTANCES INHIBITING PROPOSED COATINGS.
- 12. ALL HARDWARE AND MATERIAL ITEMS ON THIS SHEET ARE INCIDENTAL TO PAY ITEM FOR ZINC ALUMINUM SPRAY.
- 13. THOROUGHLY CLEAR THE ALL VERTICAL FACES OF THE FOOTINGS OF ANY MARINE GROWTH AND DEBRIS BEFORE ALL PERFORMING ANY OF THE ASSOCIATED WORK FOR FOOTING METALIZATION.

LEGEND:



TO BE METALIZED

PROJECT NO. 15BPR.25
BRUNSWICK COUNTY
 BRIDGE NO. 14



STATE OF NORTH CAROLINA
 DEPARTMENT OF TRANSPORTATION
 RALEIGH
**CHANNEL BENT
 FOOTING RESTORATION**
 ZINC METALIZING DETAILS
 BENTS 37-49, 52 & 53

KCA 4800 SIX FORKS ROAD SUITE 120
 KISINGER CAMPO & ASSOCIATES RALEIGH, NC 27609
 (919) 882-7839

DRAWN BY : JACOB H. DUKE DATE : 03-2018
 CHECKED BY : DIEGO A. AGUIRRE DATE : 03-2018
 DESIGN ENGINEER OF RECORD : SAMUEL L. CULLUM DATE : 03-2018

REVISIONS						SHEET NO.
NO.	BY:	DATE:	NO.	BY:	DATE:	S-36
1			3			TOTAL SHEETS 111
2			4			

DOCUMENT NOT CONSIDERED FINAL UNLESS ALL SIGNATURES COMPLETED