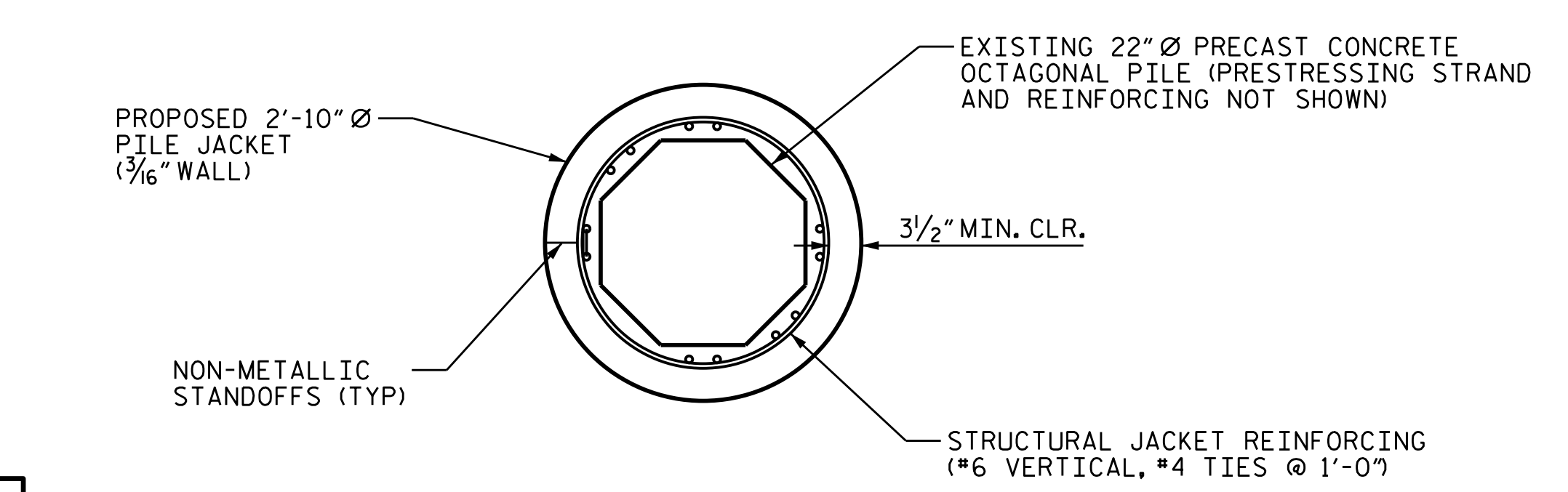


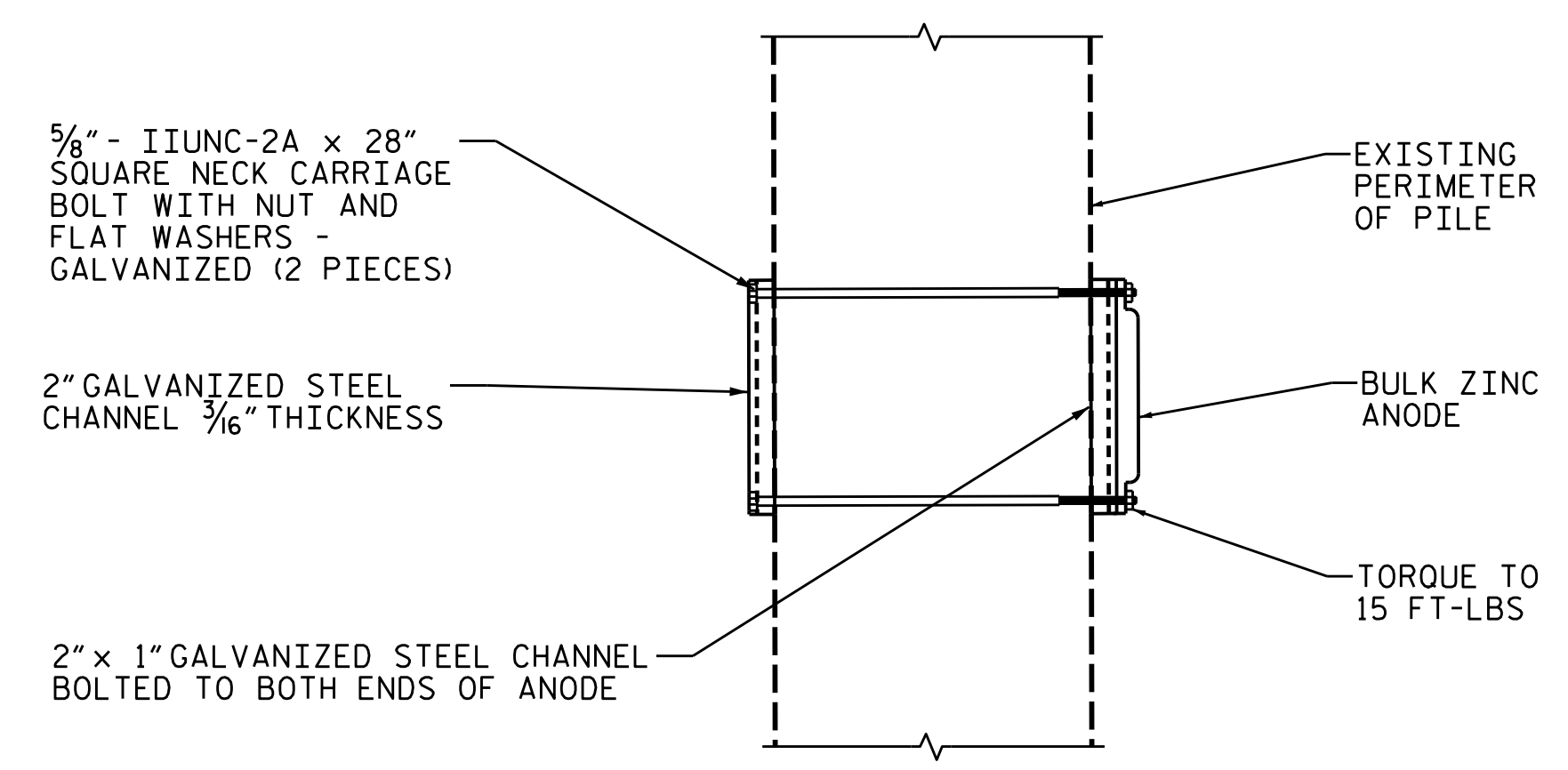
TYPICAL CP PILE JACKET

ELEVATION



SECTION B-B

TYPICAL STRUCTURAL JACKET SHOWN, NON-STRUCTURAL SIMILAR



VIEW A-A

PILE JACKET NOTES:

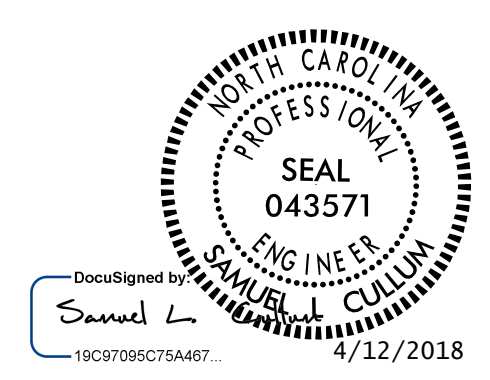
1. PROVIDE A PUMPING PORT WITHIN 4" OF THE PILE JACKET BOTTOM OR GROUNDLINE TO APPLY FILLER. IF ADDITIONAL PUMPING PORTS ARE REQUIRED TO ENSURE PROPER FILLING, THEY SHALL BE LOCATED ABOVE THE BOTTOM PORT HOLE, STAGGERED ON ALTERNATING SIDES.
2. ALL CONDUIT, BULK ZINC ANODES, JUNCTION BOXES, AND CONNECTIONS SHALL BE PLACED ON THE SOUTH FACE OF PILES NORTH OF THE CHANNEL AND THE NORTH FACE SOUTH OF THE CHANNEL.
3. SEE PILE JACKET TABLES FOR PROPOSED JACKET LOCATIONS.
4. AT LOCATIONS WHERE MUDLINE IS HIGH RELATIVE TO BOTTOM OF JACKET, ANODE MAY BE PLACED UP TO 12" INTO MUDLINE BY HAND EXCAVATION. OUTSIDE OF THIS, THE MUDLINE IS NOT TO BE DISTURBED.

PROJECT NO. 15BPR.25

BRUNSWICK COUNTY

BRIDGE NO. 14

SHEET 1 OF 3



STATE OF NORTH CAROLINA
DEPARTMENT OF TRANSPORTATION
RALEIGH

CP PILE JACKET
DETAILS

KCA 4800 SIX FORKS ROAD SUITE 120
KISINGER CAMPO & ASSOCIATES RALEIGH, NC 27609
(919) 882-7839

DRAWN BY :	SAMUEL L. CULLUM	DATE :	03-2018
CHECKED BY :	JACOB H. DUKE	DATE :	03-2018
DESIGN ENGINEER OF RECORD :	SAMUEL L. CULLUM	DATE :	04-2018

REVISIONS						SHEET NO.
NO.	BY:	DATE:	NO.	BY:	DATE:	S-33
1			3			TOTAL SHEETS
2			4			111

DOCUMENT NOT CONSIDERED FINAL UNLESS ALL SIGNATURES COMPLETED