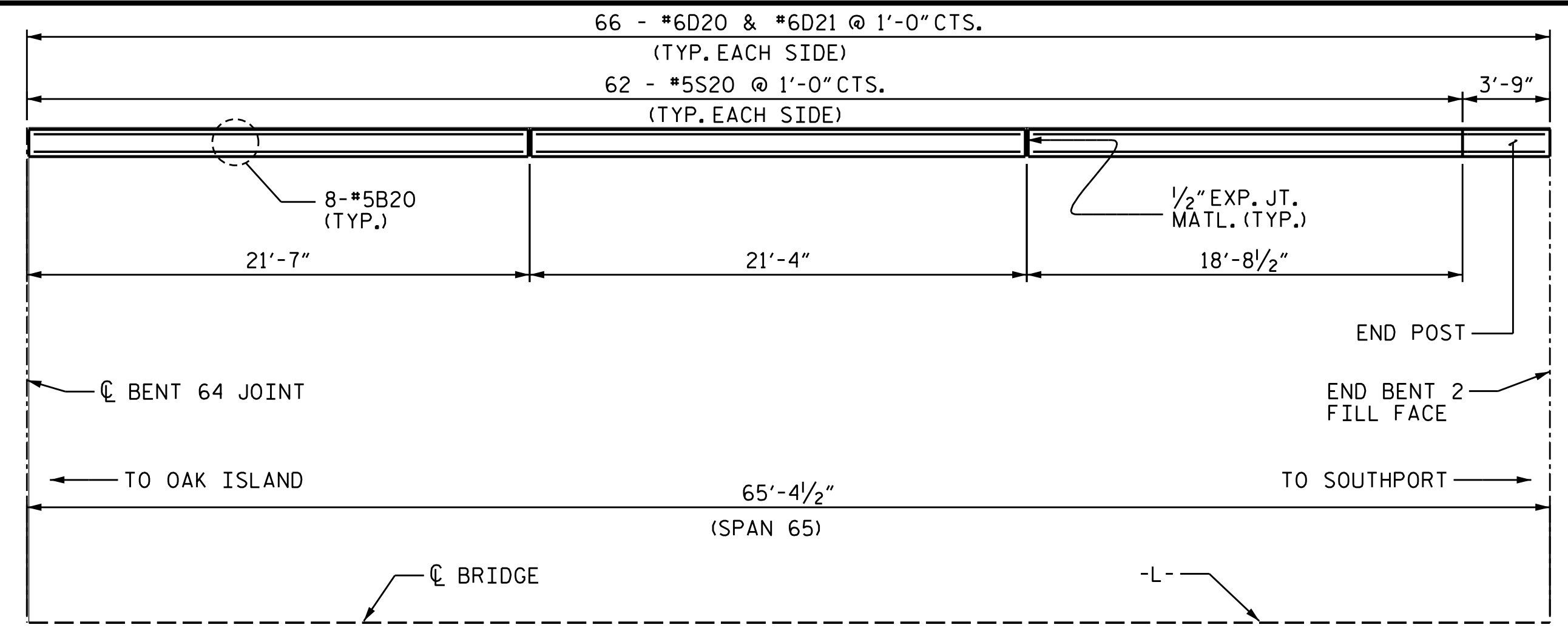


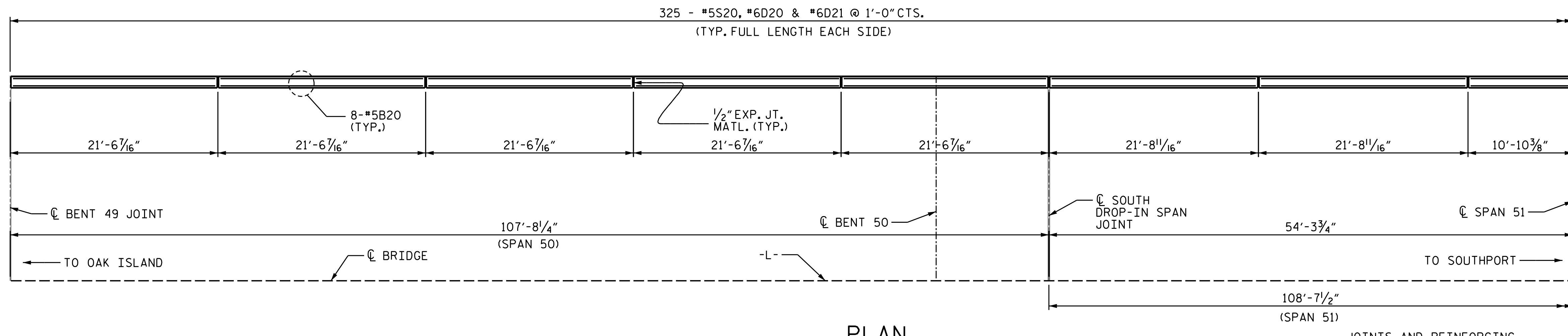
**PLAN**

(RAIL REINFORCING AND JOINTS SIMILAR ON BOTH RAILS)  
(SPANS 29-37, 63 & 64)



**PLAN**

(RAIL REINFORCING AND JOINTS SIMILAR ON BOTH RAILS)  
(SPAN 65)



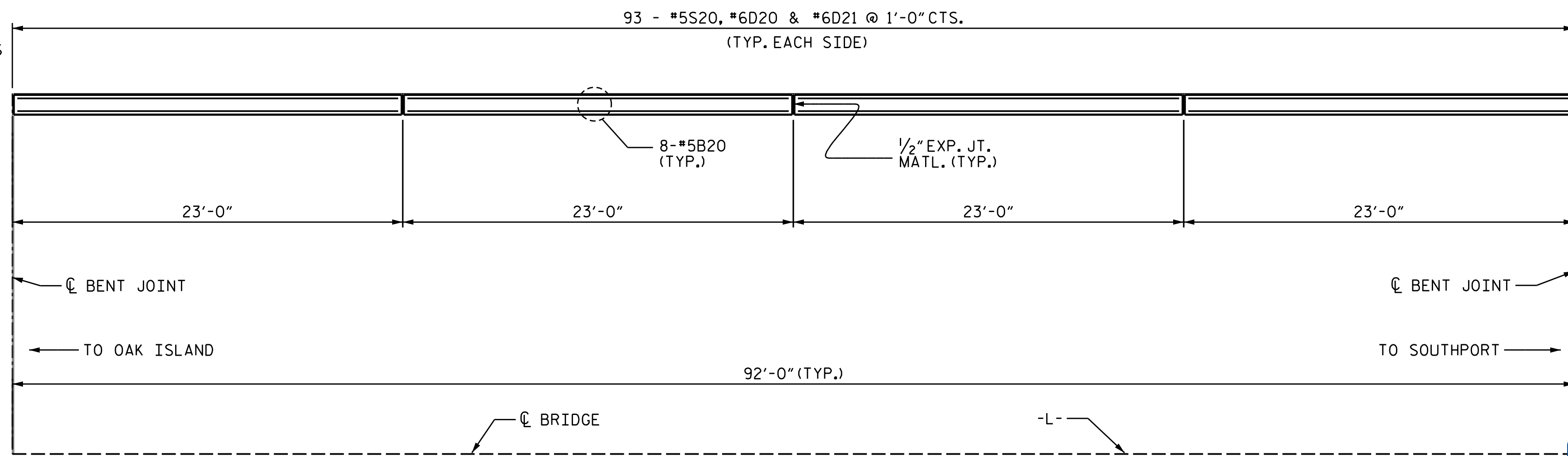
**PLAN**

(RAIL REINFORCING AND JOINTS SIMILAR ON BOTH RAILS)  
(SPANS 50-52)

JOINTS AND REINFORCING  
SYMMETRICAL ABOUT  $\text{CL}$  SPAN 51

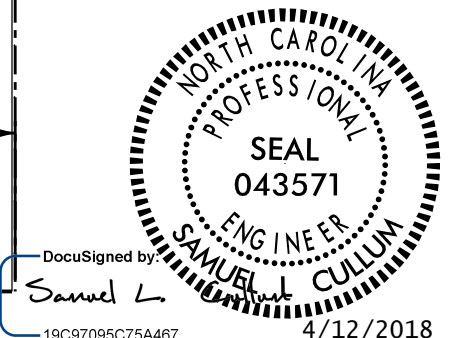
**NOTES:**

- FOR 2-BAR METAL RAIL RETROFIT, SEE SPECIAL PROVISIONS.
- COORDINATE THIS SHEET WITH INFO ON THE SHEET FOR ELECTRICAL REPAIRS TO THE NAVIGATIONAL LIGHT SYSTEM, SHEET S-29.
- COORDINATE THIS SHEET WITH INFO ON THE SHEETS FOR THE 2-BAR METAL RAIL IN SPANS 1-28, SHEETS S-10 THRU S-12.
- ALL REINFORCING STEEL IN THE PROPOSED 2-BAR METAL RAIL PARAPET IN SPANS 29-65 SHALL BE EPOXY COATED.
- GROOVED CONTRACTION JOINTS, 1/2" IN DEPTH, SHALL BE TOOLED IN ALL EXPOSED FACES OF THE BARRIER RAIL AND IN ACCORDANCE WITH ARTICLE 825-10(B) OF THE STANDARD SPECIFICATIONS. A CONTRACTION JOINT SHALL BE LOCATED AT EACH THIRD POINT BETWEEN BARRIER RAIL EXPANSION JOINT. ONLY ONE CONTRACTION JOINT IS REQUIRED AT MIDPOINT OF BARRIER RAIL SEGMENTS LESS THAN 20 FEET IN LENGTH AND NO CONTRACTION JOINTS ARE REQUIRED FOR THOSE SEGMENTS LESS THAN 10 FEET IN LENGTH.



**PLAN**

(RAIL REINFORCING AND JOINTS SIMILAR ON BOTH RAILS)  
(SPANS 38-49, 53-62)



PROJECT NO. 15BPR.25  
BRUNSWICK COUNTY  
BRIDGE NO. 14

SHEET 3 OF 4

STATE OF NORTH CAROLINA  
DEPARTMENT OF TRANSPORTATION  
RALEIGH  
**BRIDGE RAIL RETROFIT**  
PARAPET AND  
END POST DETAILS  
SPANS 29-65

**KCA** 4800 SIX FORKS ROAD SUITE 120  
KISINGER CAMPO & ASSOCIATES RALEIGH, NC 27609  
(919) 882-7839

DRAWN BY : JACOB H. DUKE DATE : 03-2018  
CHECKED BY : DIEGO A. AGUIRRE DATE : 03-2018  
DESIGN ENGINEER OF RECORD : SAMUEL L. CULLUM DATE : 03-2018

DOCUMENT NOT CONSIDERED  
FINAL UNLESS ALL  
SIGNATURES COMPLETED

REVISIONS						SHEET NO.
NO.	BY:	DATE:	NO.	BY:	DATE:	S-27
1			3			TOTAL SHEETS
2			4			111