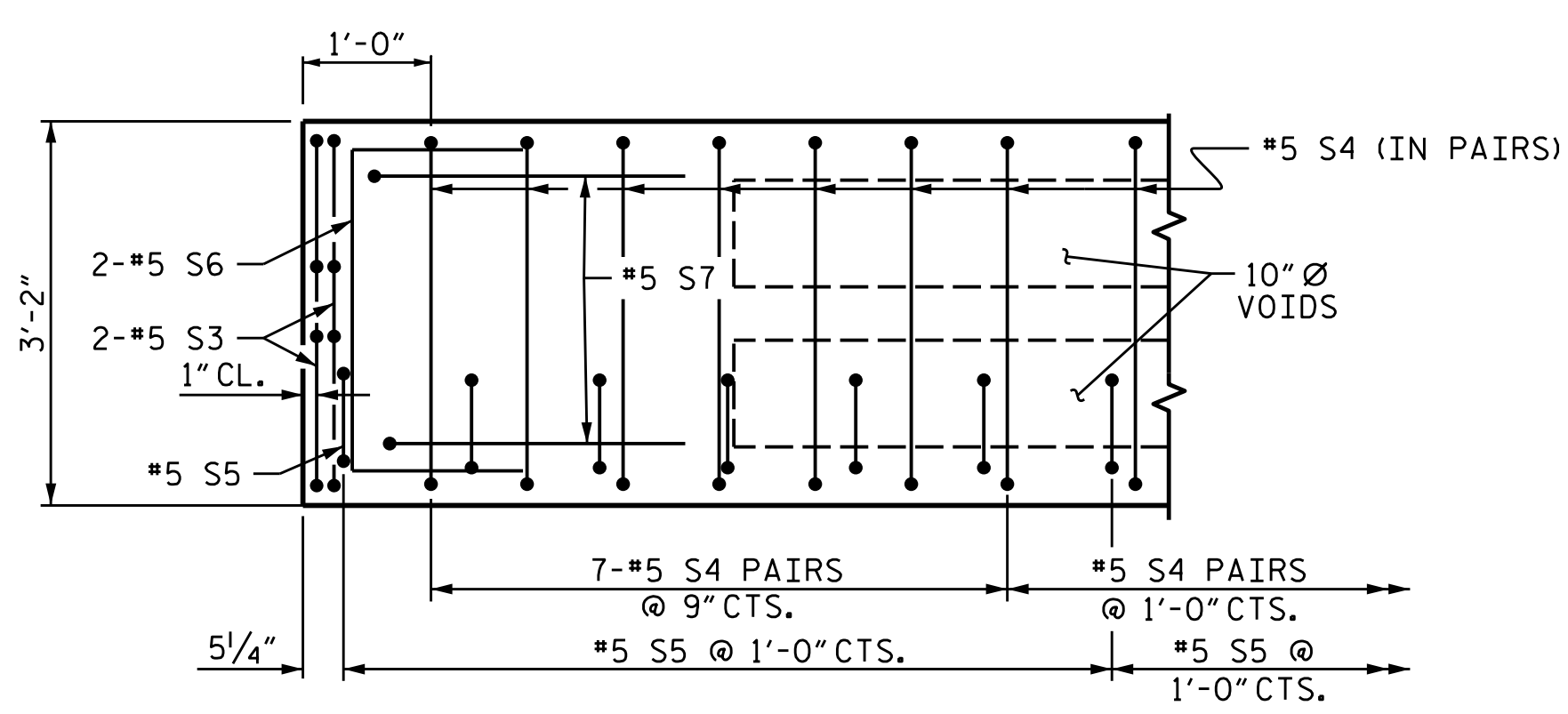


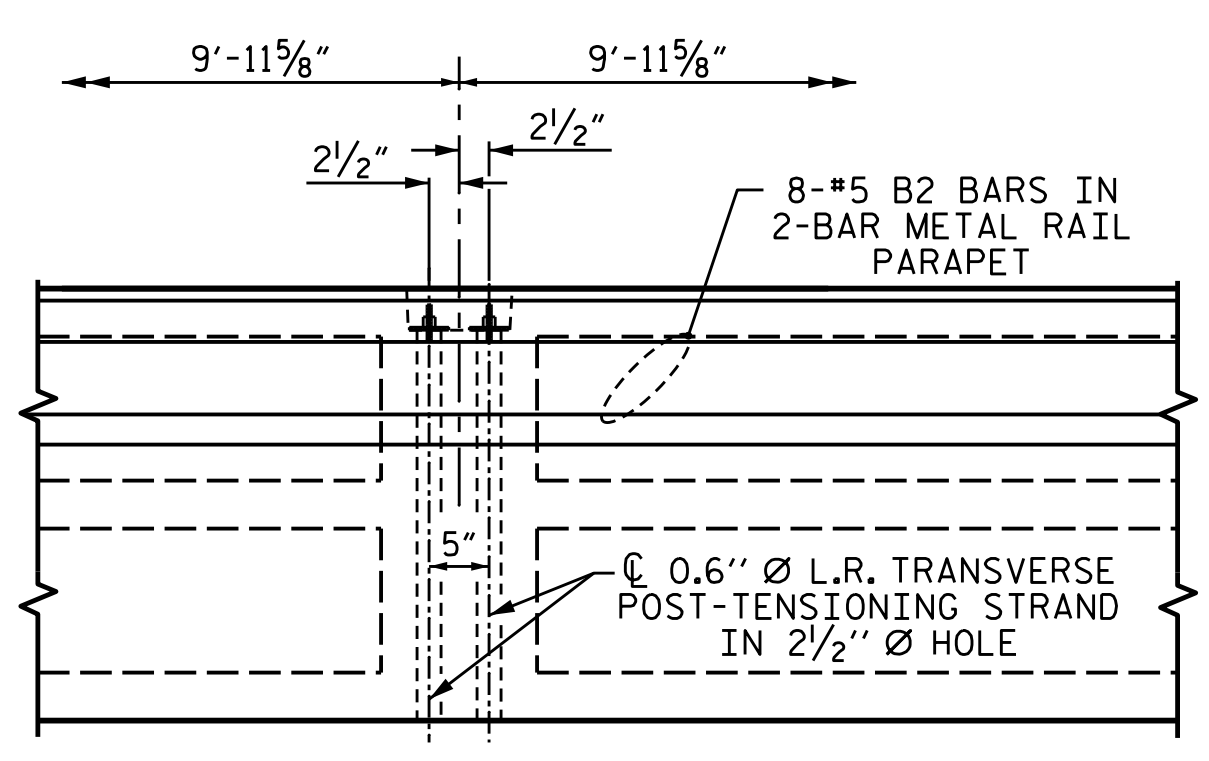
PLAN OF UNIT

(SPANS 1 THROUGH 28)
* SEE PROPOSED TYPICAL SECTION



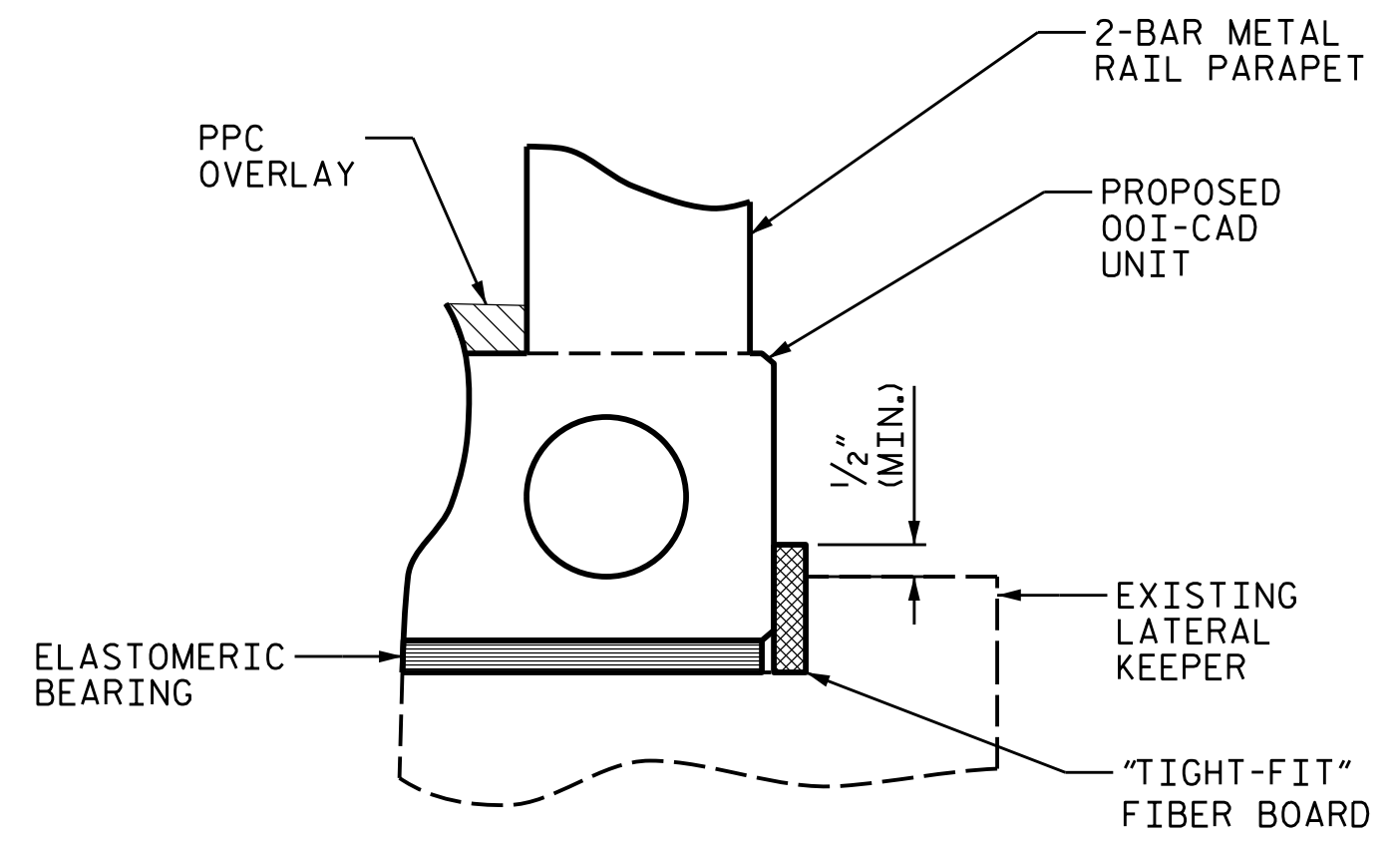
DETAIL "A"

(TYPICAL EACH END OF UNIT)
EXTERIOR UNIT SHOWN - INTERIOR UNIT SIMILAR EXCEPT OMIT #5 S5 BARS AND REPLACE #5 S3 WITH #5 S1, #5 S4 WITH #5 S2, AND #5 S6 WITH #5 S8.



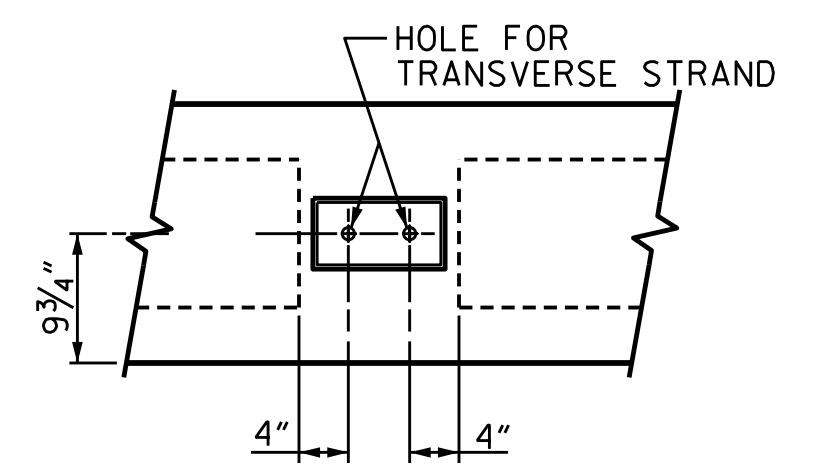
DETAIL "B"

#5 S4 BARS MAY BE SHIFTED AS NECESSARY TO MAINTAIN 1" CLEAR TO GROUDED RECESS AND 2 1/2" Ø TRANSVERSE POST-TENSIONING STRAND HOLES

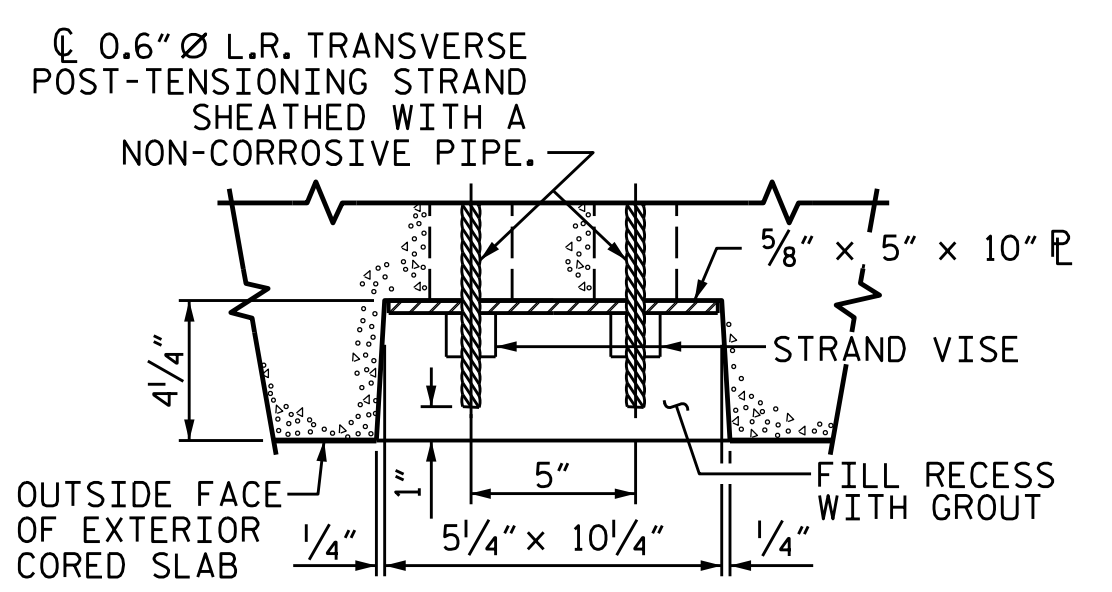


LATERAL KEEPER DETAIL

(TYP. ALL BENTS FOR CORED SLAB REPLACEMENT)
(COST OF FIBER BOARD IS INCIDENTAL TO COST OF CORED SLABS)



ELEVATION VIEW

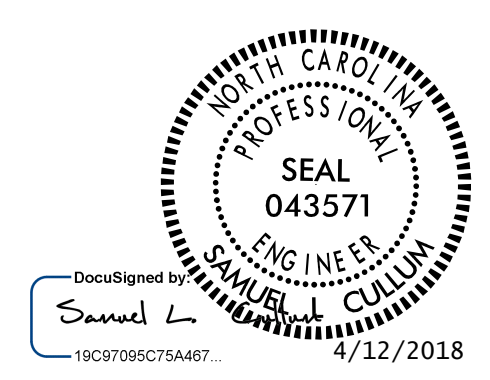


PLAN VIEW

GROUDED RECESS AT END OF POST-TENSIONED STRAND-CORED SLABS
(3 LOCATIONS PER SPAN - SEE PLAN OF UNIT)

PROJECT NO. 15BPR.25
BRUNSWICK COUNTY
BRIDGE NO. 14

SHEET 2 OF 4



STATE OF NORTH CAROLINA
DEPARTMENT OF TRANSPORTATION
RALEIGH
OOI-CAD
PLAN OF 39'-10 1/2" UNIT
40'-0" CLEAR ROADWAY
90° SKEW

REVISIONS						SHEET NO.
NO.	BY:	DATE:	NO.	BY:	DATE:	S-7
1			3			TOTAL SHEETS
2			4			111

KCA 4800 SIX FORKS ROAD SUITE 120
KISINGER CAMPO & ASSOCIATES RALEIGH, NC 27609
(919) 882-7839

DRAWN BY : DIEGO A. AGUIRRE DATE : 03-2018
CHECKED BY : JACOB H. DUKE DATE : 03-2018
DESIGN ENGINEER OF RECORD : SAMUEL L. CULLUM DATE : 03-2018

DOCUMENT NOT CONSIDERED FINAL UNLESS ALL SIGNATURES COMPLETED