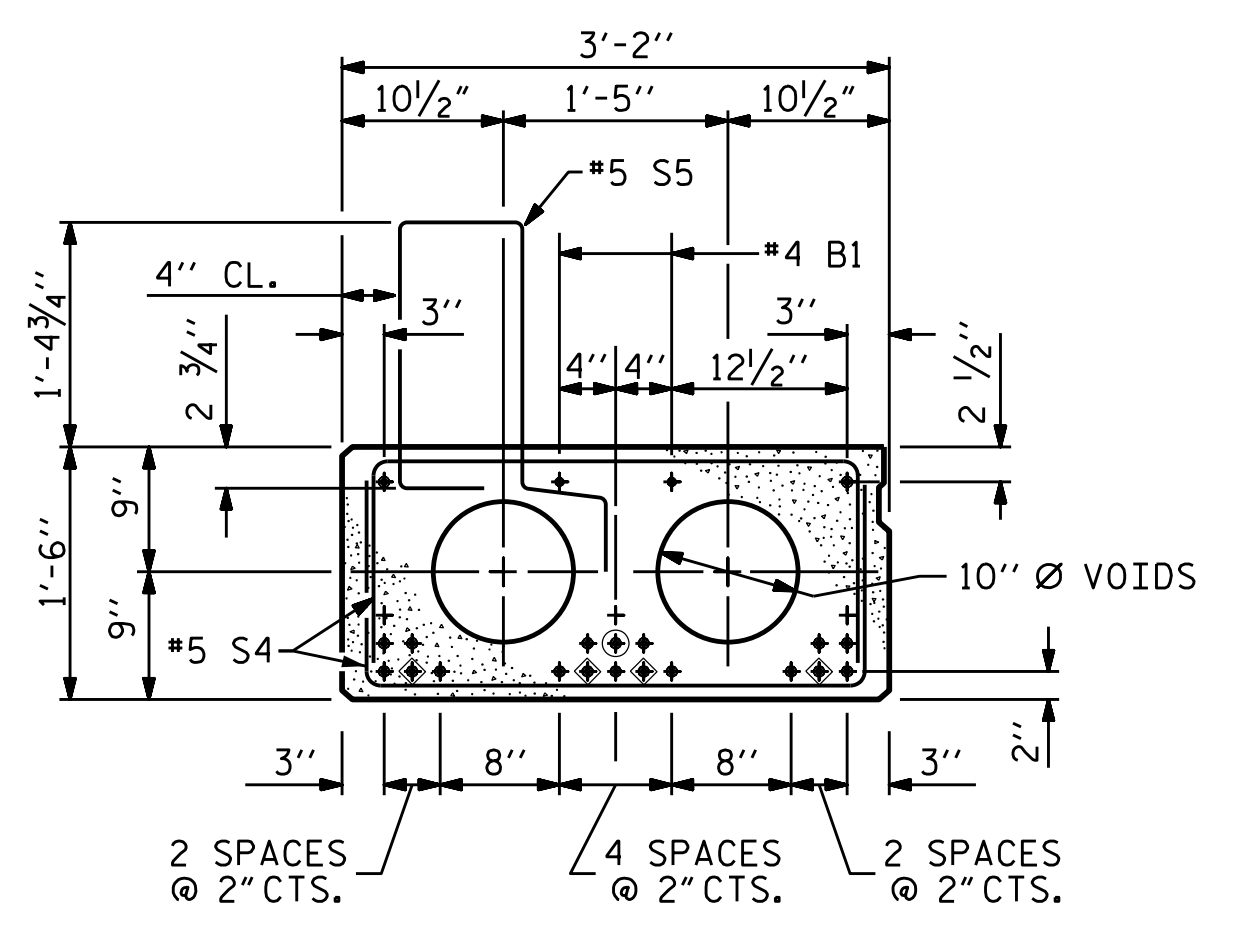


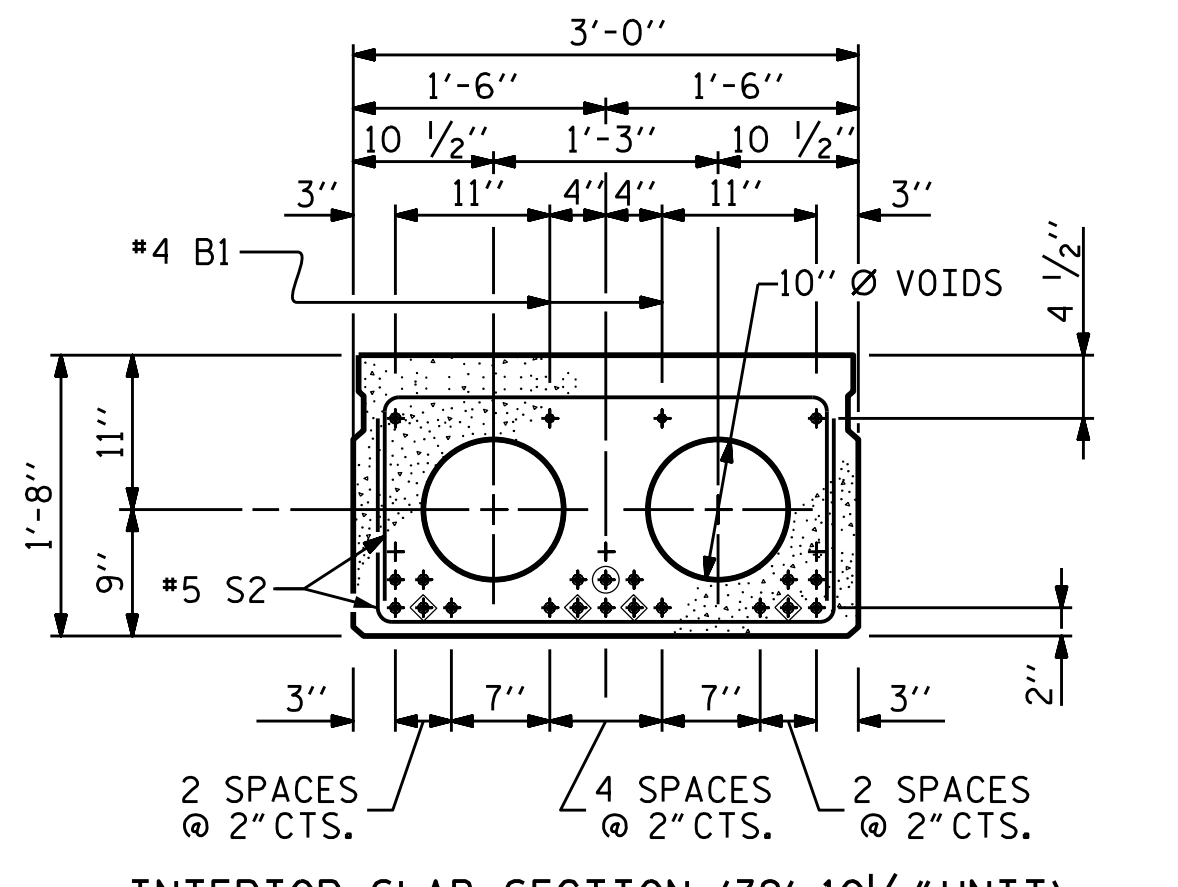
HALF SECTION AT INTERMEDIATE DIAPHRAGMS **PROPOSED TYPICAL SECTION (SPAN 1 THRU SPAN 28)** **HALF SECTION (THROUGH VOIDS)**

- * THE MAXIMUM BARRIER RAIL HEIGHT AND PPC OVERLAY THICKNESS IS SHOWN, THE HEIGHT OF THE BARRIER RAIL AND PPC OVERLAY THICKNESS VARIES WHILE THE TOP OF THE BARRIER RAIL FOLLOWS THE PROFILE OF THE GUTTERLINE.
- ** OUT TO OUT DIMENSIONS BASED ON ASSUMED CORED SLAB WIDTHS WITH DIMENSIONAL TOLERANCE INCLUDED. CAST CORED SLAB UNITS AND INSTALL FIBER BOARD AT LATERAL KEEPER INTERFACE PER PLANS.

NOTES:
 FOR BARRIER RAIL DETAILS, SEE 2-BAR METAL RAIL PARAPET DETAILS ON NEXT SHEET.
 FOR SCARIFICATION DETAILS FOR POLYESTER POLYMER CONCRETE (PPC) OVERLAY, SEE OOI-CAD - SCARIFICATION DETAILS SHEET.
 FOR SECTION AT BENT 28, SEE PPC OVERLAY JOINT DETAILS SHEET, SECTION A-A.



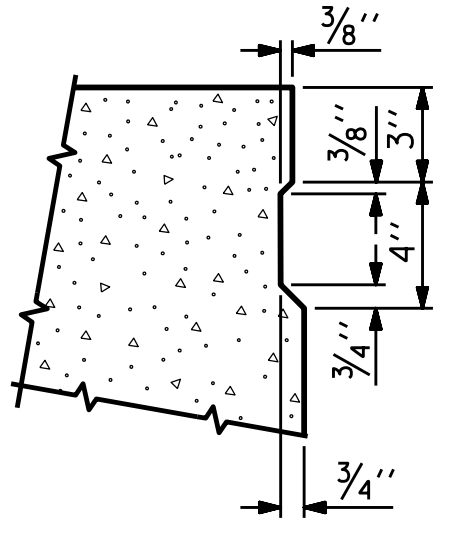
EXTERIOR SLAB SECTION (39'-10 1/2" UNIT)
(20 STRANDS REQUIRED)



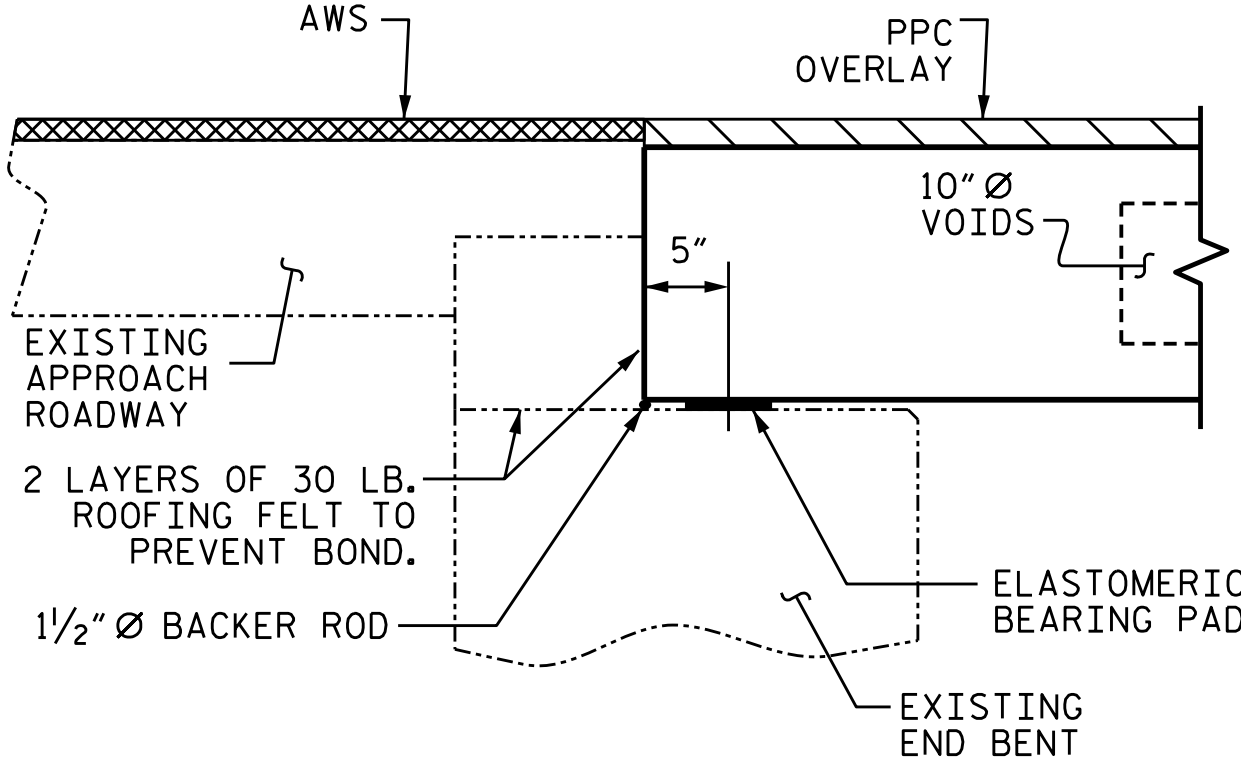
INTERIOR SLAB SECTION (39'-10 1/2" UNIT)
(20 STRANDS REQUIRED)

0.6" Ø LOW RELAXATION STRAND LAYOUT

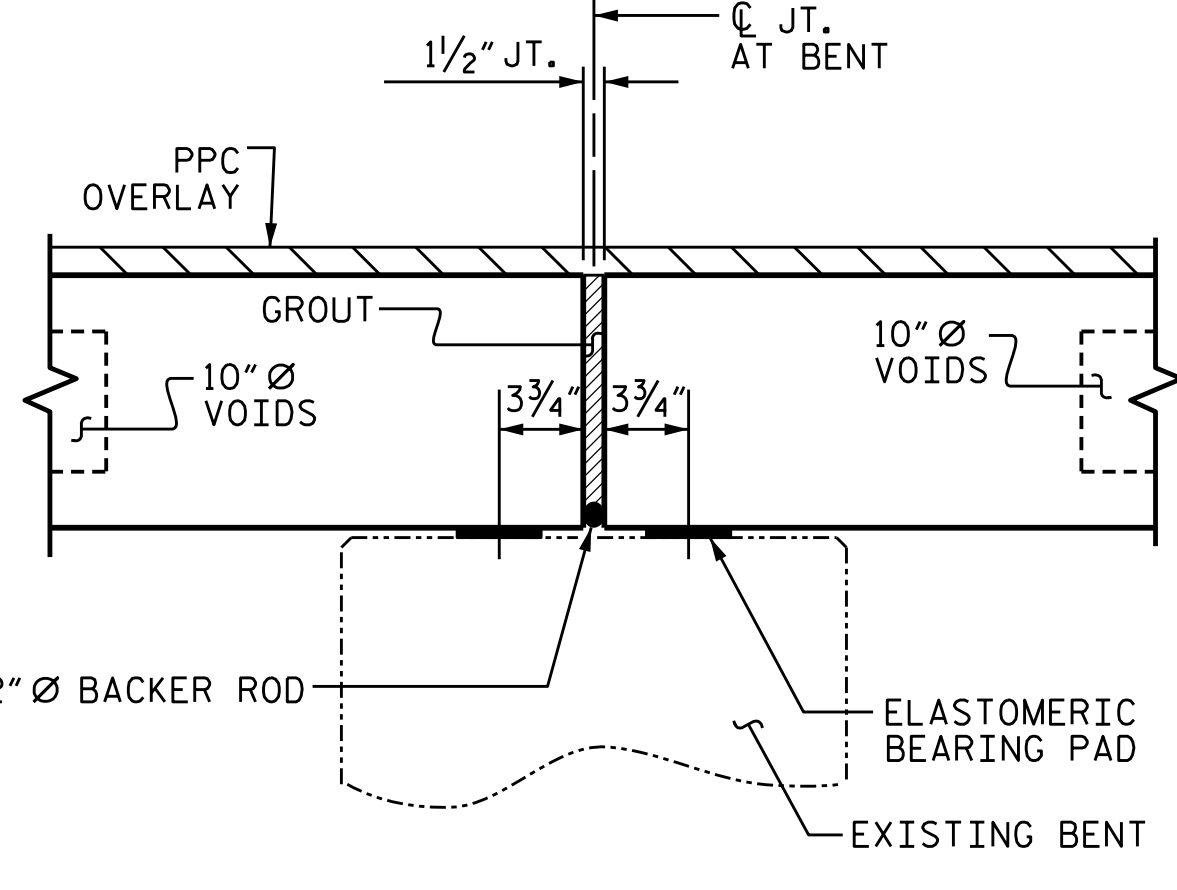
- ◆ BOND SHALL BE BROKEN ON THESE STRANDS FOR A DISTANCE OF 12'-0" FROM END OF CORED SLAB UNIT. SEE STANDARD SPECIFICATIONS, ARTICLE 1078-7.
- BOND SHALL BE BROKEN ON THESE STRANDS FOR A DISTANCE OF 6'-0" FROM END OF CORED SLAB UNIT. SEE STANDARD SPECIFICATIONS, ARTICLE 1078-7.



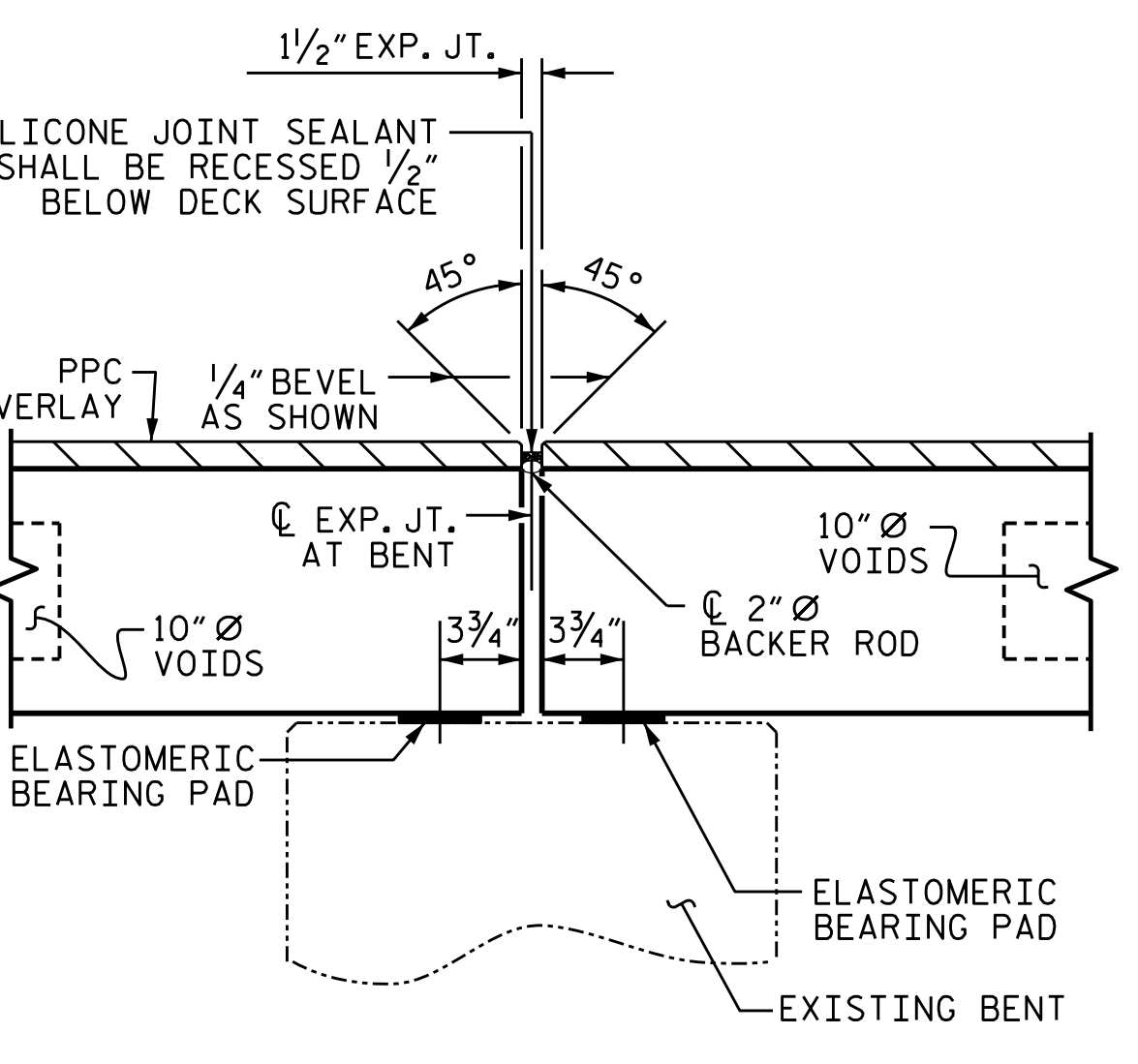
SHEAR KEY DETAIL
 NOTE: OMIT SHEAR KEY ON OUTSIDE FACE OF EXTERIOR CORED SLABS.



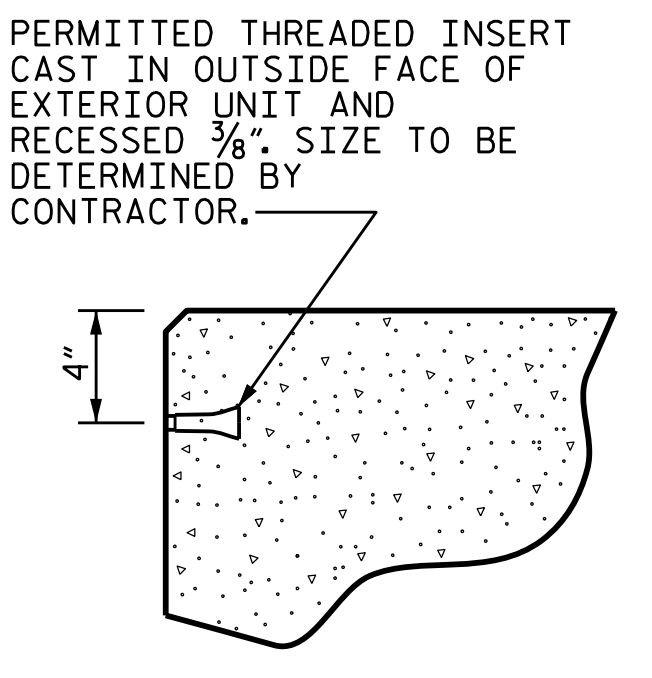
SECTION AT END BENT
(BT #: END BENT 1)



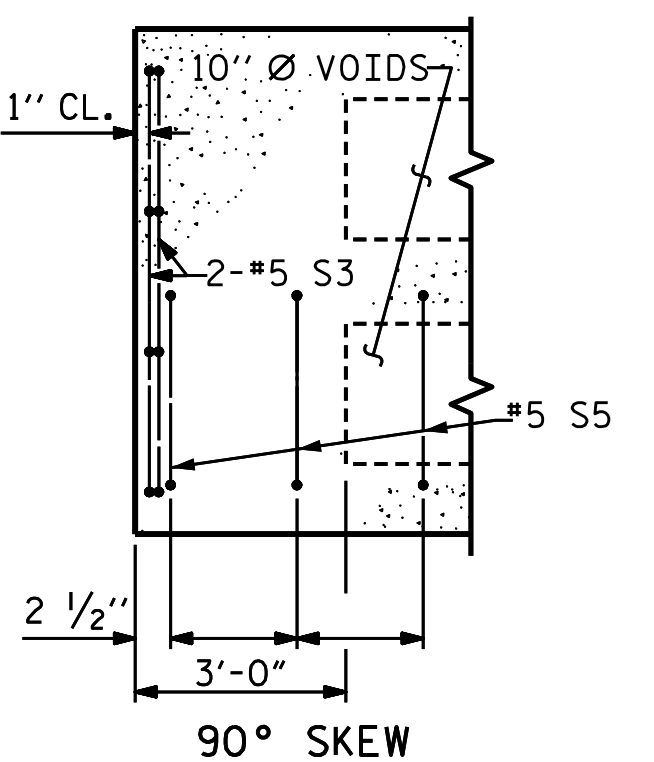
FIXED END SECTION AT BENT
(BT #: 1, 3, 4, 6, 7, 9, 10, 12, 13, 15, 16, 18, 19, 21, 22, 24, 25, 27)



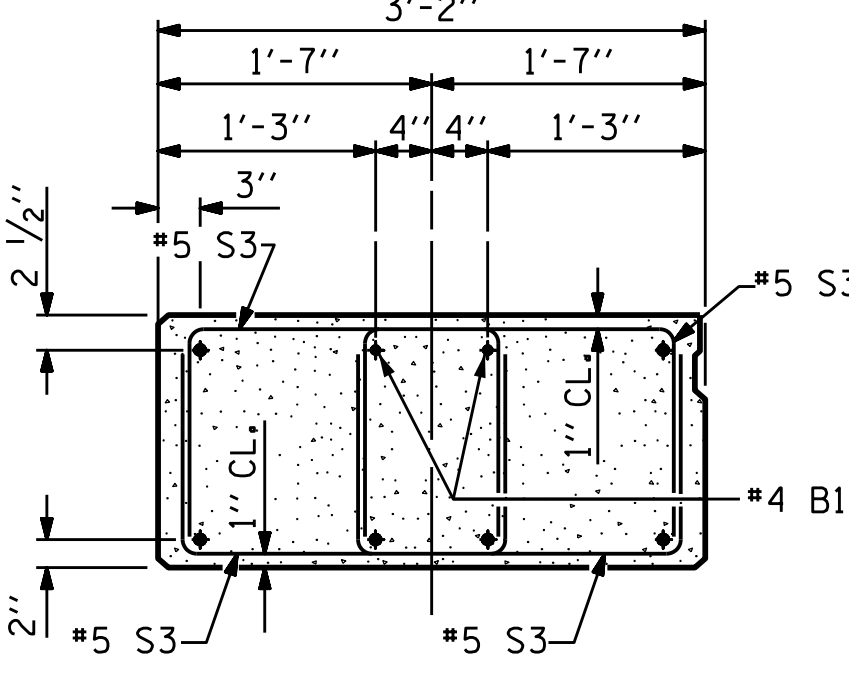
EXPANSION END SECTION AT BENT
(BT #: 2, 5, 8, 11, 14, 17, 20, 23, 26)



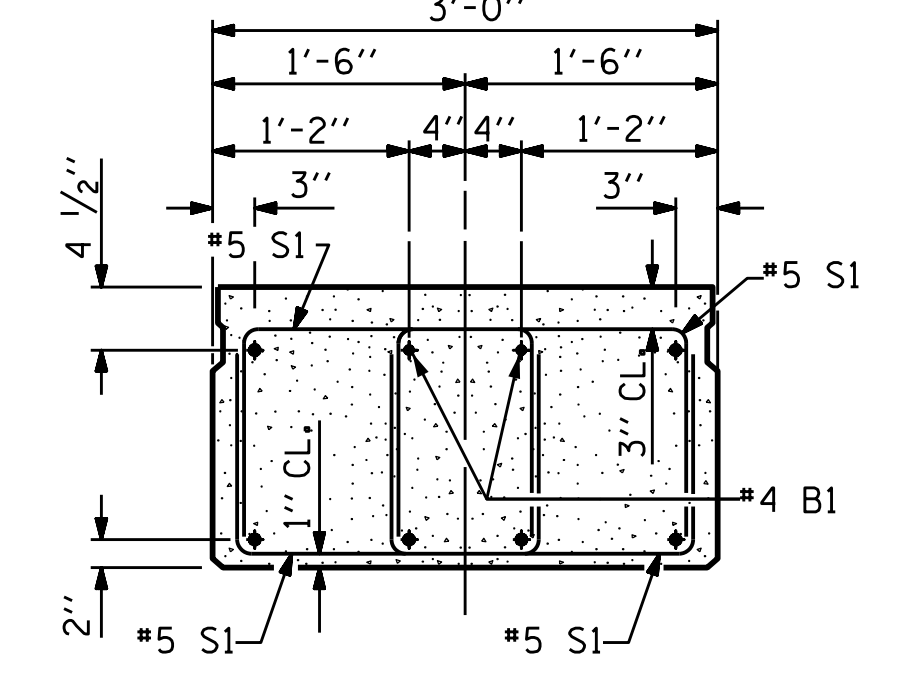
THREADED INSERT DETAIL



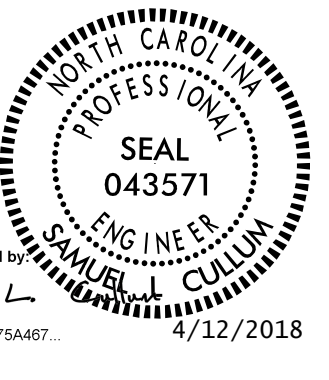
PART PLAN-EXTERIOR SECTION
 EXTERIOR SECTION SHOWN-INTERIOR SECTION SIMILAR EXCEPT OMIT S5 BARS AND REPLACE S3 WITH S1



END ELEVATION EXTERIOR SLAB
 SHOWING PLACEMENT OF DOUBLE STIRRUPS (STRAND LAYOUT NOT SHOWN)



END ELEVATION INTERIOR SLAB
 SHOWING PLACEMENT OF DOUBLE STIRRUPS (STRAND LAYOUT NOT SHOWN)



PROJECT NO. 15BPR.25
 BRUNSWICK COUNTY
 BRIDGE NO. 14
 SHEET 1 OF 4

STATE OF NORTH CAROLINA
 DEPARTMENT OF TRANSPORTATION
 RALEIGH
 OOI-CAD
 PRESTRESSED CONCRETE
 CORED SLAB UNIT

REVISIONS						SHEET NO.
NO.	BY:	DATE:	NO.	BY:	DATE:	S-6
1			3			TOTAL SHEETS
2			4			111

DOCUMENT NOT CONSIDERED FINAL UNLESS ALL SIGNATURES COMPLETED

KCA 4800 SIX FORKS ROAD SUITE 120
 KISINGER CAMPO & ASSOCIATES RALEIGH, NC 27609
 (919) 882-7839

DRAWN BY : DIEGO A. AGUIRRE DATE : 03-2018
 CHECKED BY : JACOB H. DUKE DATE : 03-2018
 DESIGN ENGINEER OF RECORD : SAMUEL L. CULLUM DATE : 03-2018