

**This electronic collection of documents is provided
for the convenience of the user
and is Not a Certified Document –**

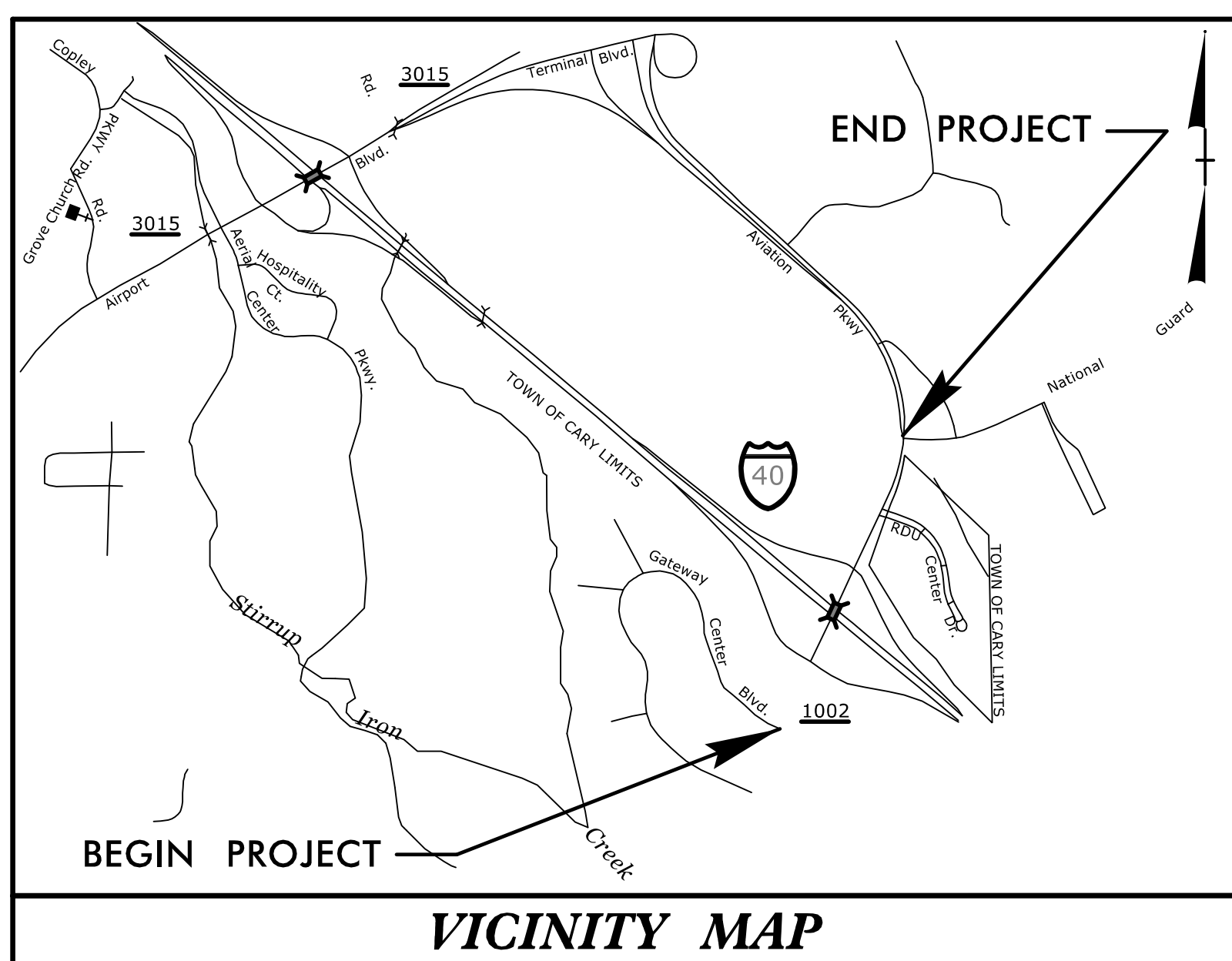
**The documents contained herein were originally issued
and sealed by the individuals whose names and license
numbers appear on each page, on the dates appearing
with their signature on that page.**

**This file or an individual page
shall not be considered a certified document.**

09, 08, 2018

TIP PROJECT: I-5506

T.I.P. NO.	SHEET NO.
I-5506	UC-1

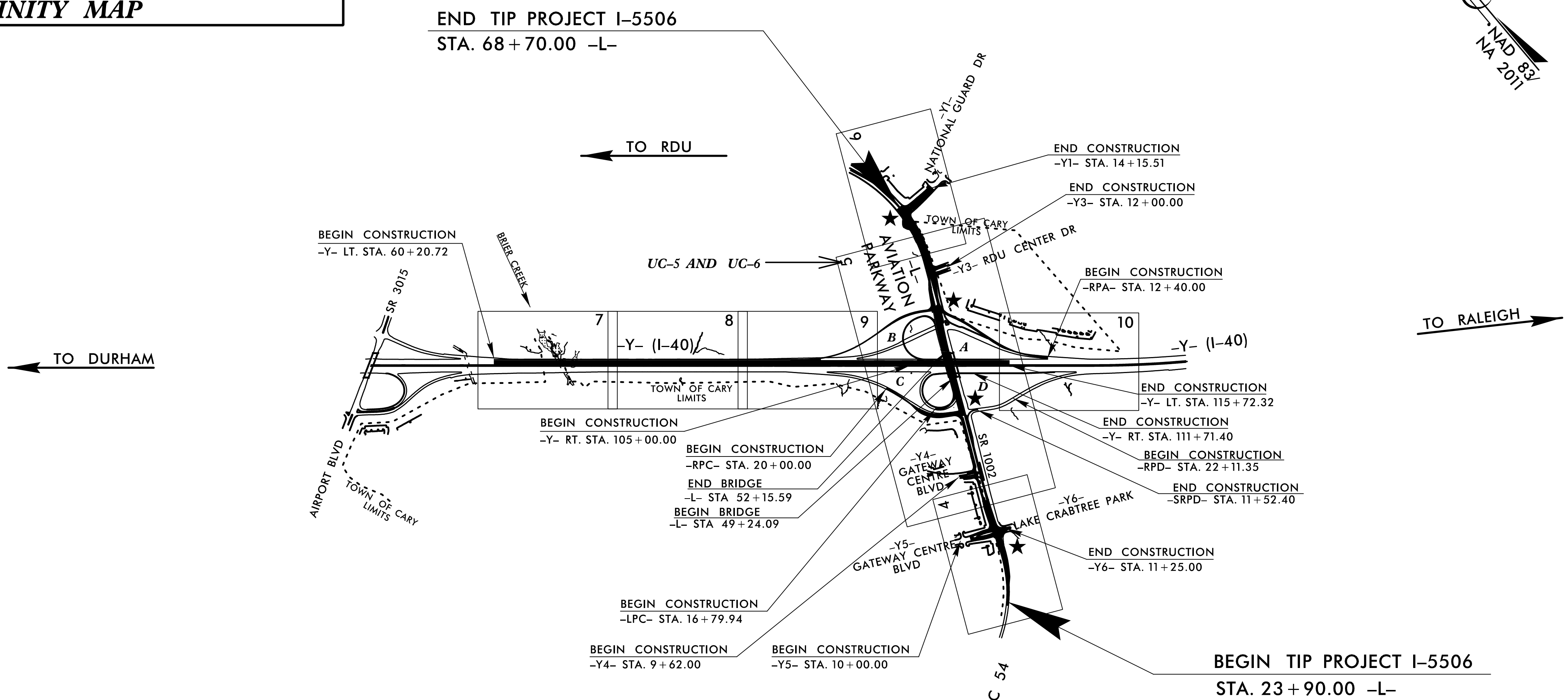


STATE OF NORTH CAROLINA
DIVISION OF HIGHWAYS

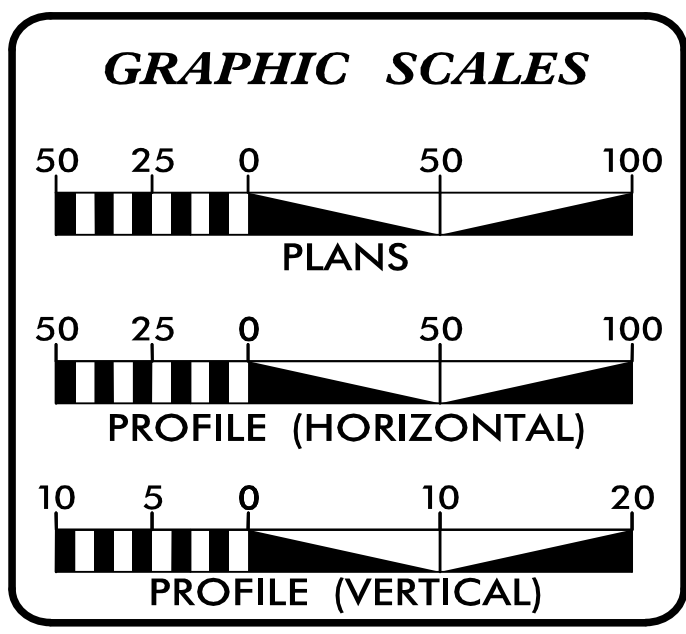
UTILITY CONSTRUCTION PLANS
WAKE COUNTY

LOCATION: I-40 AND SR 1002 (AVIATION PARKWAY) INTERCHANGE

TYPE OF WORK: WATER AND SEWER RELOCATION



DOCUMENT NOT CONSIDERED FINAL
UNTIL ALL SIGNATURES ARE COMPLETED



INDEX OF SHEETS

SHEET NO.:	DESCRIPTION:
UC-1	TITLE SHEET
UC-2	UTILITY SYMBOLOGY
UC-3A-3B	NOTES
UC-4A-4D	DETAILS
UC-5	WATERLINE PROFILE SHEET
UC-6	FORCE MAIN PROFILE SHEET

WATER AND SEWER OWNERS ON PROJECT

(A) WATER - TOWN OF CARY
(B) SANITARY SEWER - TOWN OF CARY

PREPARED IN THE OFFICE OF

2703 Jones Franklin Rd, Ste. 201
Cary, North Carolina 27518
Tel: 919-481-4342
Fax: 919-482-4762
www.hiepc.com
Firm License No. C-2586

Engineering is our profession.
Service is our passion.

Laura M. Stiles, P.E.
CONSULTANT CONTACT #1

Tyler Highfill, P.E.
CONSULTANT CONTACT #2

SEAL

NORTH CAROLINA PROFESSIONAL ENGINEER

SEAL 43335

Laura M. Stiles, P.E.

1/3/2018

DIVISION OF HIGHWAYS UTILITIES UNIT

1555 MAIL SERVICES CENTER
RALEIGH, NC 27699-1555
PHONE (919) 707-6690
FAX (919) 250-4151

DONNA JACKSON, P.E. UTILITIES REGIONAL ENGINEER

ALI KOUCHEKI, P.E. UTILITIES ENGINEER

KYLE PLEASANT UTILITIES AREA COORDINATOR

\$\$\$\$\$ SYSTEM \$\$\$\$\$\$
\$\$\$\$\$ DGN \$\$\$\$\$\$
\$\$\$\$\$ USERNAME \$\$\$\$\$\$

STATE OF NORTH CAROLINA DIVISION OF HIGHWAYS

UTILITIES PLAN SHEET SYMBOLS

PROPOSED WATER SYMBOLS

Water Line (Sized as Shown)	
11 1/4 Degree Bend	
22 1/2 Degree Bend	
45 Degree Bend	
90 Degree Bend	
Plug	
Tee	
Cross	
Reducer	
Gate Valve	
Butterfly Valve	
Tapping Valve	
Line Stop	
Line Stop with Bypass	
Blow Off	
Fire Hydrant	
Relocate Fire Hydrant	
Remove Fire Hydrant	REM FH
Water Meter	
Relocate Water Meter	
Remove Water Meter	REM WM
Water Pump Station	
RPZ Backflow Preventer	
DCV Backflow Preventer	
Relocate RPZ Backflow Preventer	
Relocate DCV Backflow Preventer	

PROPOSED SEWER SYMBOLS

Gravity Sewer Line (Sized as Shown)	
Force Main Sewer Line (Sized as Shown)	
Manhole (Sized per Note)	
Sewer Pump Station	

PROPOSED MISCELLANEOUS UTILITIES SYMBOLS

Power Pole	
Telephone Pole	
Joint Use Pole	
Telephone Pedestal	
Utility Line by Others (Type as Shown)	
Trenchless Installation	
Encasement by Open Cut	
Encasement	

Thrust Block	
Air Release Valve	
Utility Vault	
Concrete Pier	
Steel Pier	
Plan Note	
Pay Item Note	

EXISTING UTILITIES SYMBOLS

Power Pole		*Underground Power Line	
Telephone Pole		*Underground Telephone Cable	
Joint Use Pole		*Underground Telephone Conduit	
Utility Pole		*Underground Fiber Optics Telephone Cable	
Utility Pole with Base		*Underground TV Cable	
H-Frame Pole		*Underground Fiber Optics TV Cable	
Power Transmission Line Tower		*Underground Gas Pipeline	
Water Manhole		Aboveground Gas Pipeline	
Power Manhole		*Underground Water Line	
Telephone Manhole		Aboveground Water Line	
Sanitary Sewer Manhole		*Underground Gravity Sanitary Sewer Line	
Hand Hole for Cable		Aboveground Gravity Sanitary Sewer Line	
Power Transformer		*Underground SS Forced Main Line	
Telephone Pedestal		Underground Unknown Utility Line	
CATV Pedestal		SUE Test Hole	
Gas Valve		Water Meter	
Gas Meter		Water Valve	
Located Miscellaneous Utility Object		Fire Hydrant	
Abandoned According to Utility Records	AATUR	Sanitary Sewer Cleanout	
End of Information	E.O.I.		

*For Existing Utilities See Plan Sheet 1C

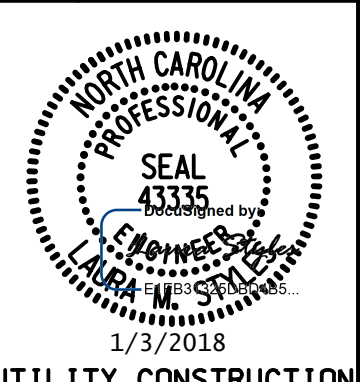
Utility Line Drawn from Record

Designated Utility Line

(Type as Shown)

5/14/99
REV: 2/1/2012

UTILITY CONSTRUCTION

PROJECT REFERENCE NO.		SHEET NO.
		UC-3A
DESIGNED BY:	LMS	
DRAWN BY:		
CHECKED BY:	TWH	
APPROVED BY:	LMS	
REVISED:		
NORTH CAROLINA DEPARTMENT OF TRANSPORTATION		UTILITIES ENGINEERING SEC. PHONE: (919) 707-6690 FAX: (919) 250-4151
UTILITY CONSTRUCTION PLANS ONLY		

GENERAL NOTES:

1. THE PROPOSED UTILITY CONSTRUCTION SHALL MEET THE APPLICABLE REQUIREMENTS OF THE NC DEPARTMENT OF TRANSPORTATION'S "STANDARD SPECIFICATIONS FOR ROADS AND STRUCTURES" DATED JANUARY 2018.
2. THE EXISTING UTILITIES BELONG TO THE TOWN OF CARY, NORTH CAROLINA.
3. ALL WATER LINES TO BE INSTALLED WITHIN COMPLIANCE OF THE RULES AND REGULATIONS OF THE NORTH CAROLINA DEPARTMENT OF ENVIRONMENTAL QUALITY, DIVISION OF WATER RESOURCES, PUBLIC WATER SUPPLY SECTION. ALL SEWER LINES TO BE INSTALLED WITHIN COMPLIANCE OF THE RULES AND REGULATIONS OF THE NORTH CAROLINA DEPARTMENT OF ENVIRONMENTAL QUALITY, DIVISION OF WATER RESOURCES, WATER QUALITY SECTION. PERFORM ALL WORK IN ACCORDANCE WITH THE APPLICABLE UTILITY CODES.
4. THE UTILITY OWNER OWNS THE EXISTING UTILITY FACILITIES AND WILL OWN THE NEW UTILITY FACILITIES AFTER ACCEPTANCE BY THE DEPARTMENT. THE DEPARTMENT OWNS THE CONSTRUCTION CONTRACT AND HAS ADMINISTRATIVE AUTHORITY. COMMUNICATIONS AND DECISIONS BETWEEN THE CONTRACTOR AND UTILITY OWNER ARE NOT BINDING UPON THE DEPARTMENT OR THIS CONTRACT UNLESS AUTHORIZED BY THE ENGINEER. AGREEMENTS BETWEEN THE UTILITY OWNER AND CONTRACTOR FOR THE WORK THAT IS NOT PART OF THIS CONTRACT OR IS SECONDARY TO THIS CONTRACT ARE ALLOWED, BUT ARE NOT BINDING UPON THE DEPARTMENT.
5. PROVIDE ACCESS FOR THE DEPARTMENT PERSONNEL AND THE OWNER'S REPRESENTATIVES TO ALL PHASES OF CONSTRUCTION. NOTIFY DEPARTMENT PERSONNEL AND THE UTILITY OWNER TWO WEEKS PRIOR TO COMMENCEMENT OF ANY WORK AND ONE WEEK PRIOR TO SERVICE INTERRUPTION. KEEP UTILITY OWNERS' REPRESENTATIVES INFORMED OF WORK PROGRESS AND PROVIDE OPPORTUNITY FOR INSPECTION OF CONSTRUCTION AND TESTING, BUT ARE NOT BINDING UPON THE DEPARTMENT.
6. THE PLANS DEPICT THE BEST AVAILABLE INFORMATION FOR THE LOCATION, SIZE, AND TYPE OF MATERIAL FOR ALL EXISTING UTILITIES. MAKE INVESTIGATIONS FOR DETERMINING THE EXACT LOCATION, SIZE, AND TYPE MATERIAL OF THE EXISTING FACILITIES AS NECESSARY FOR THE CONSTRUCTION OF THE PROPOSED UTILITIES AND FOR AVOIDING DAMAGE TO EXISTING FACILITIES. REPAIR ANY DAMAGE INCURRED TO EXISTING FACILITIES TO THE ORIGINAL OR BETTER CONDITION AT NO ADDITIONAL COST TO THE DEPARTMENT.
7. MAKE FINAL CONNECTIONS OF THE NEW WORK TO THE EXISTING SYSTEM WHERE INDICATED ON THE PLANS, AS REQUIRED TO FIT THE ACTUAL CONDITIONS, OR AS DIRECTED.
8. MAKE CONNECTIONS BETWEEN EXISTING AND PROPOSED UTILITIES AT TIMES MOST CONVENIENT TO THE PUBLIC, WITHOUT ENDANGERING THE UTILITY SERVICE, AND IN ACCORDANCE WITH THE UTILITY OWNER'S REQUIREMENTS. MAKE CONNECTIONS ON WEEKENDS, AT NIGHT, AND ON HOLIDAYS IF NECESSARY.
9. ALL UTILITY MATERIALS SHALL BE APPROVED PRIOR TO DELIVERY TO THE PROJECT. SEE 1500-7, "SUBMITTALS AND RECORDS" IN SECTION 1500 OF THE STANDARD SPECIFICATIONS.

UTILITY CONSTRUCTION

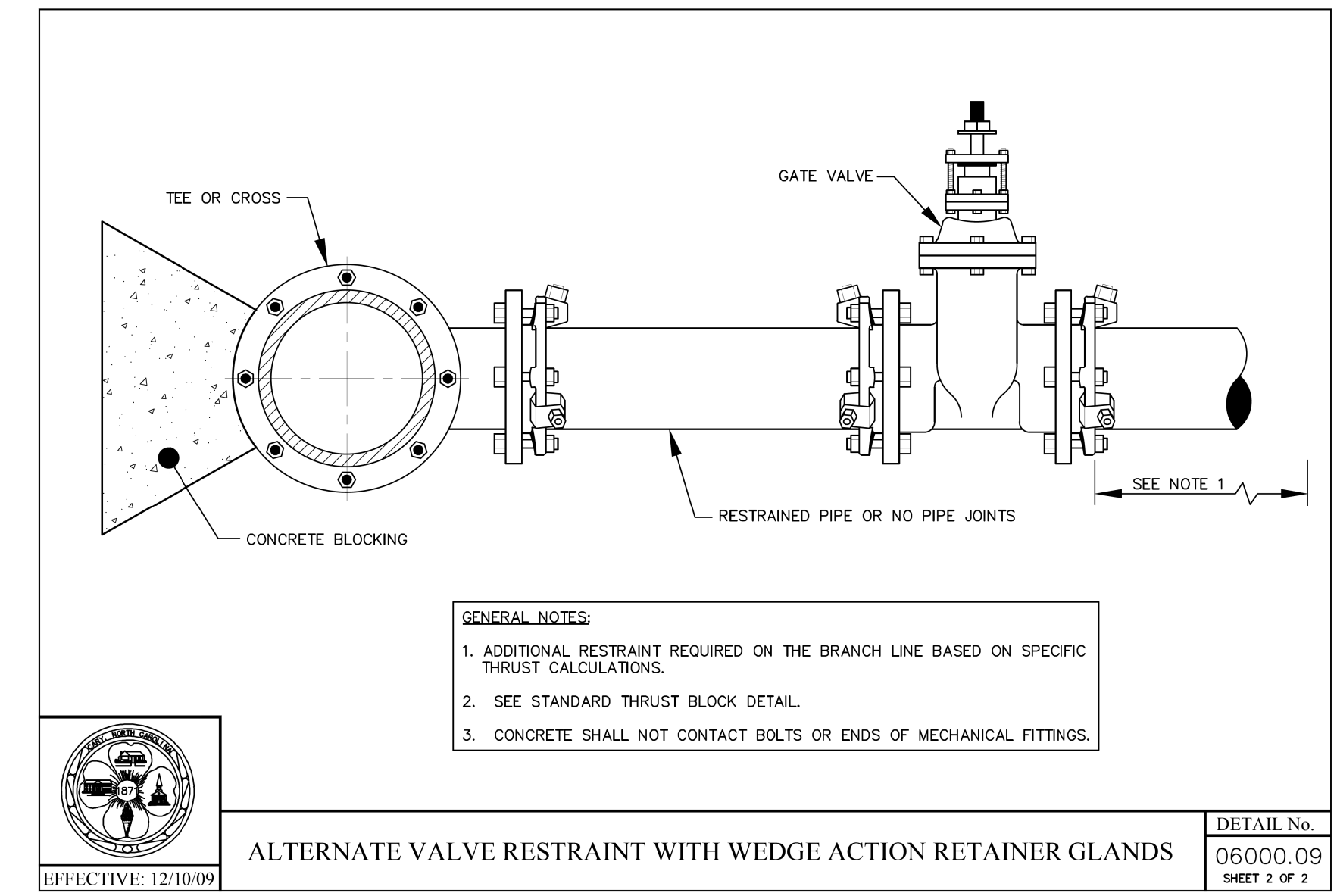
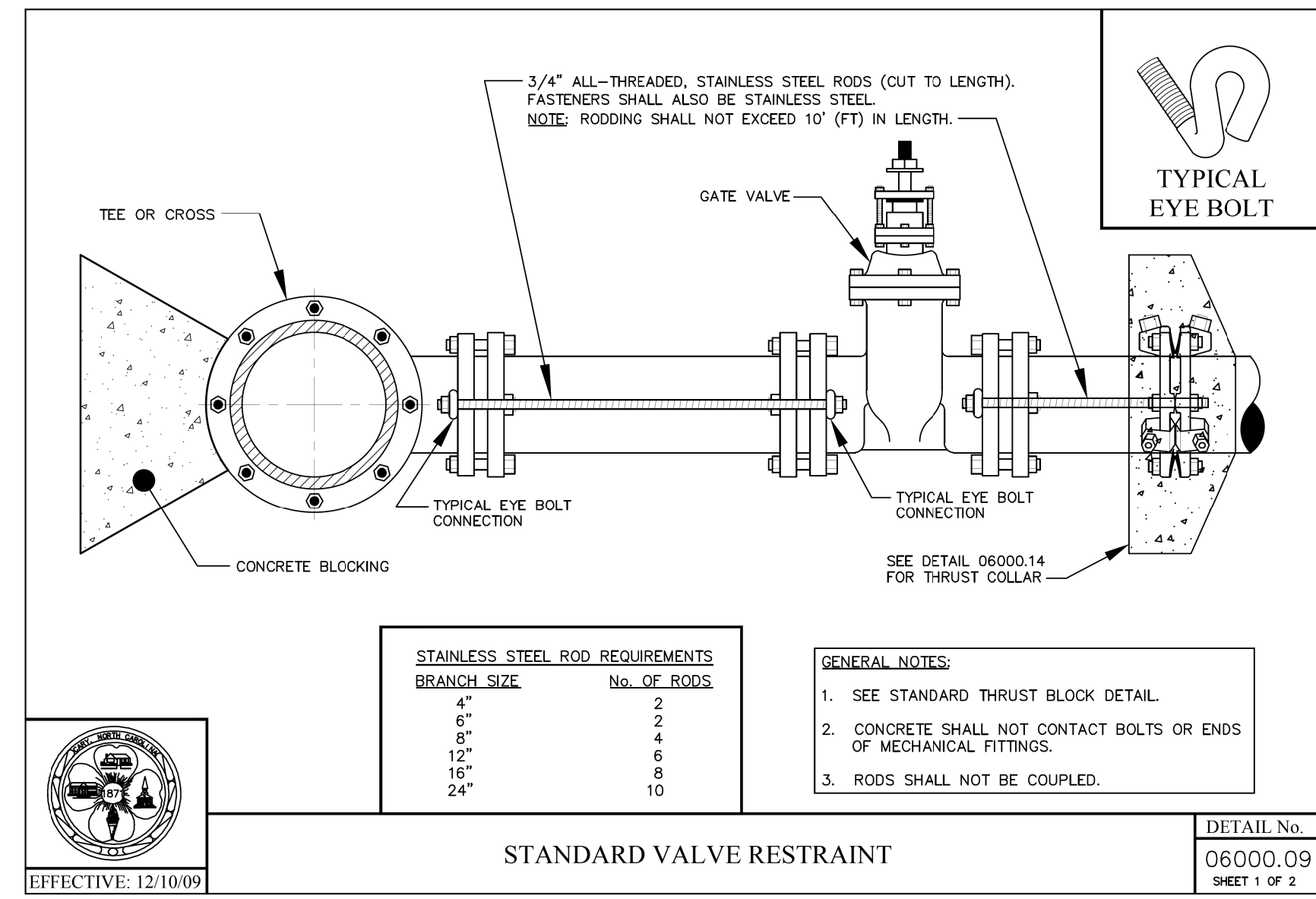
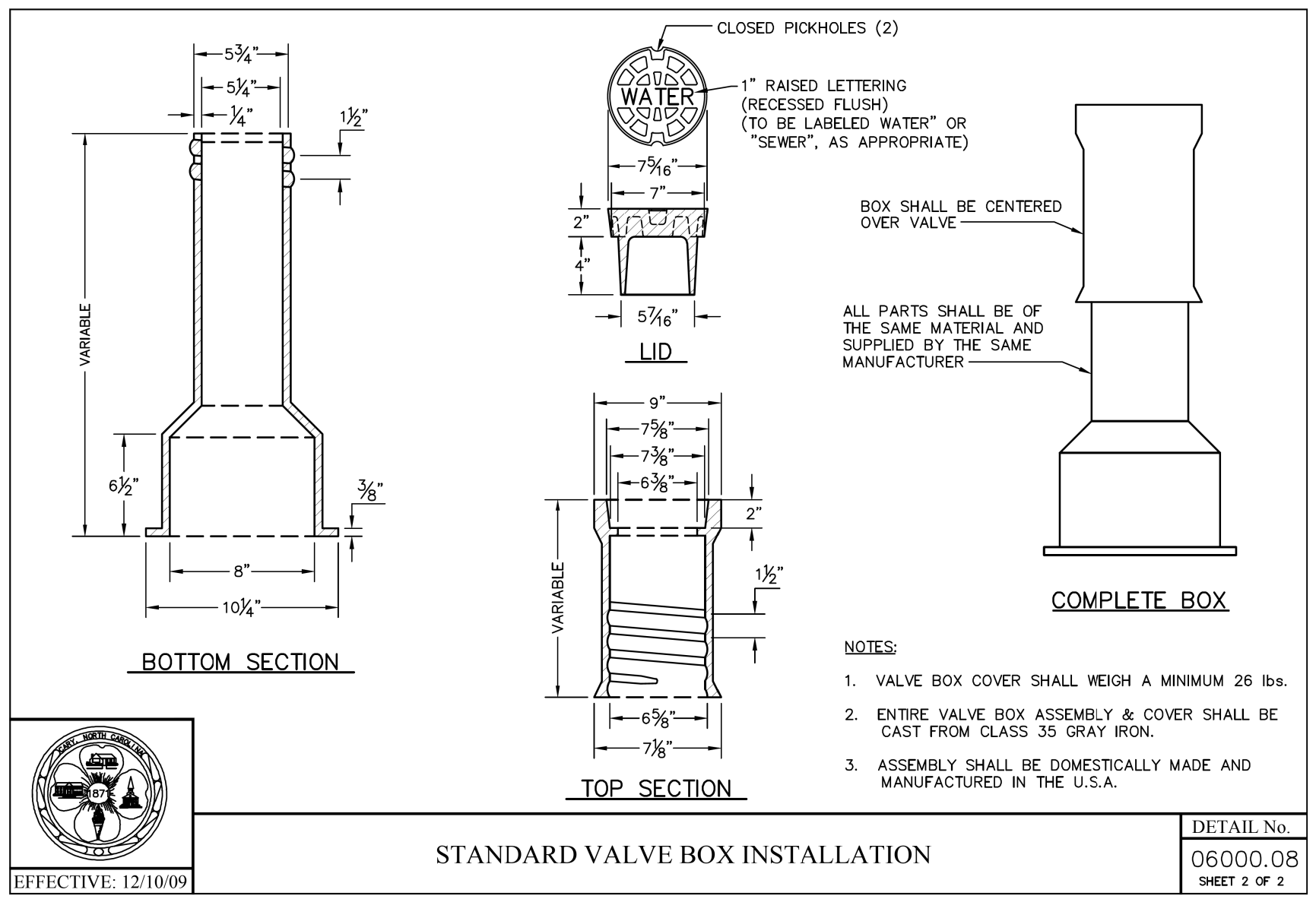
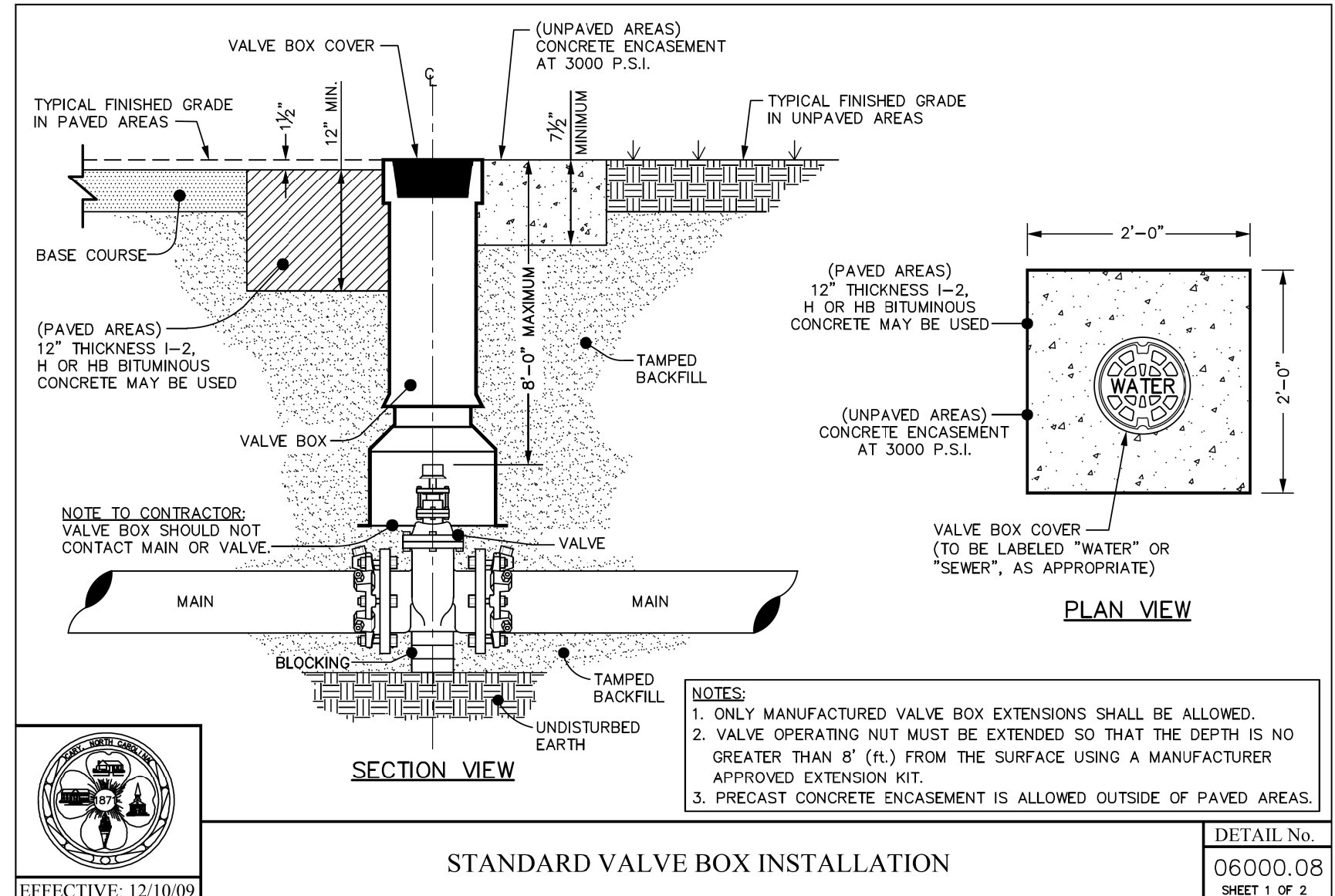
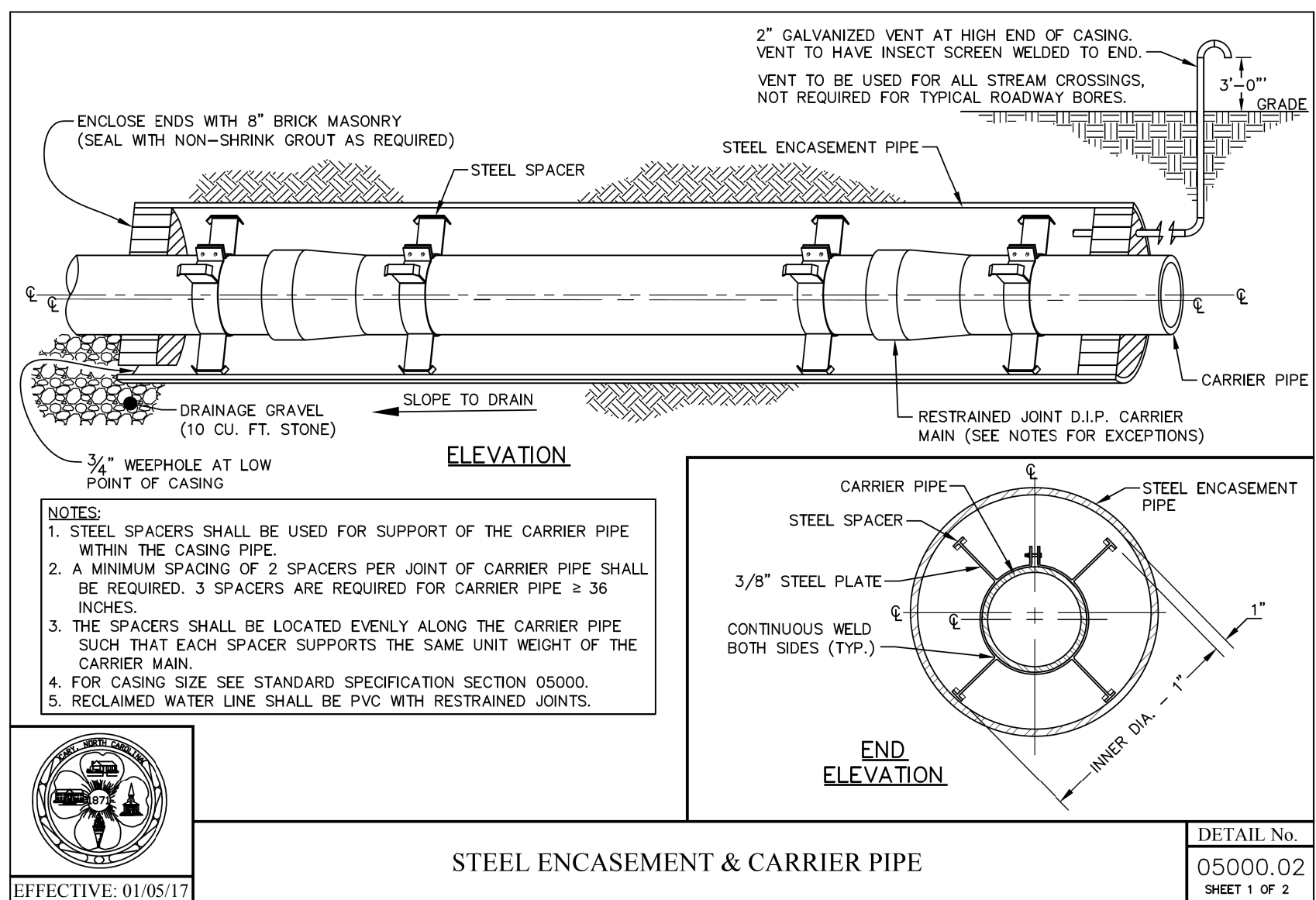
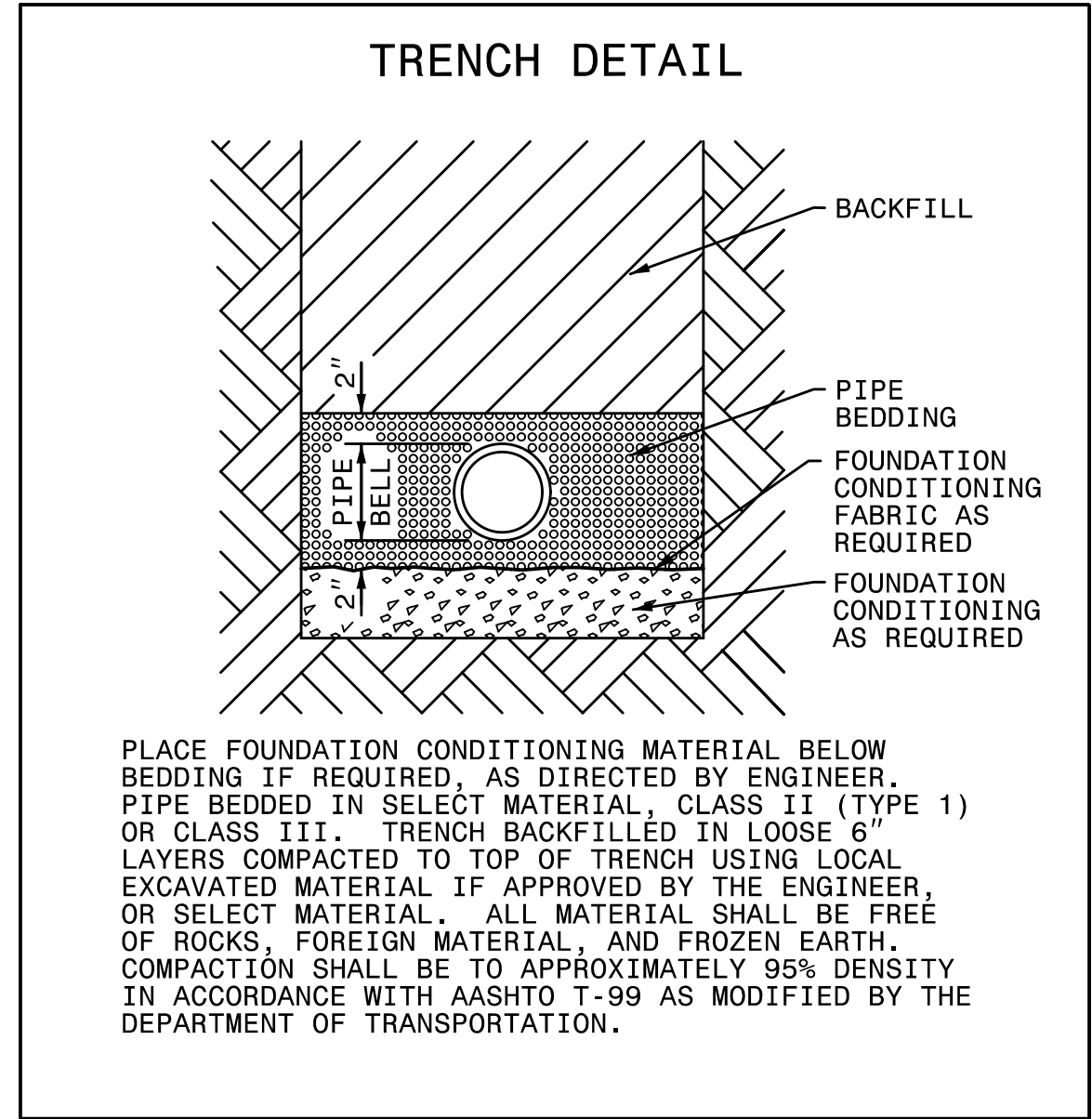
48
49
50
51
52
53
54
55
56
57
58
59
60
61
62
63
64
65
66
67
68
69
70
71
72
73
74
75
76
77
78
79
80
81
82
83
84
85
86
87
88
89
90
91
92
93
94
95
96
97
98
99
100

5/14/99

PROJECT TYPICAL DETAILS

PROJECT REFERENCE NO.	SHEET NO.
	UC-4A
DESIGNED BY: LMS	
DRAWN BY:	
CHECKED BY: TWH	
APPROVED BY: LMS	
REVISED:	
NORTH CAROLINA DEPARTMENT OF TRANSPORTATION UTILITIES ENGINEERING SEC. PHONE: (919) 707-6690 FAX: (919) 250-4151	
UTILITY CONSTRUCTION PLANS ONLY	

UTILITY CONSTRUCTION

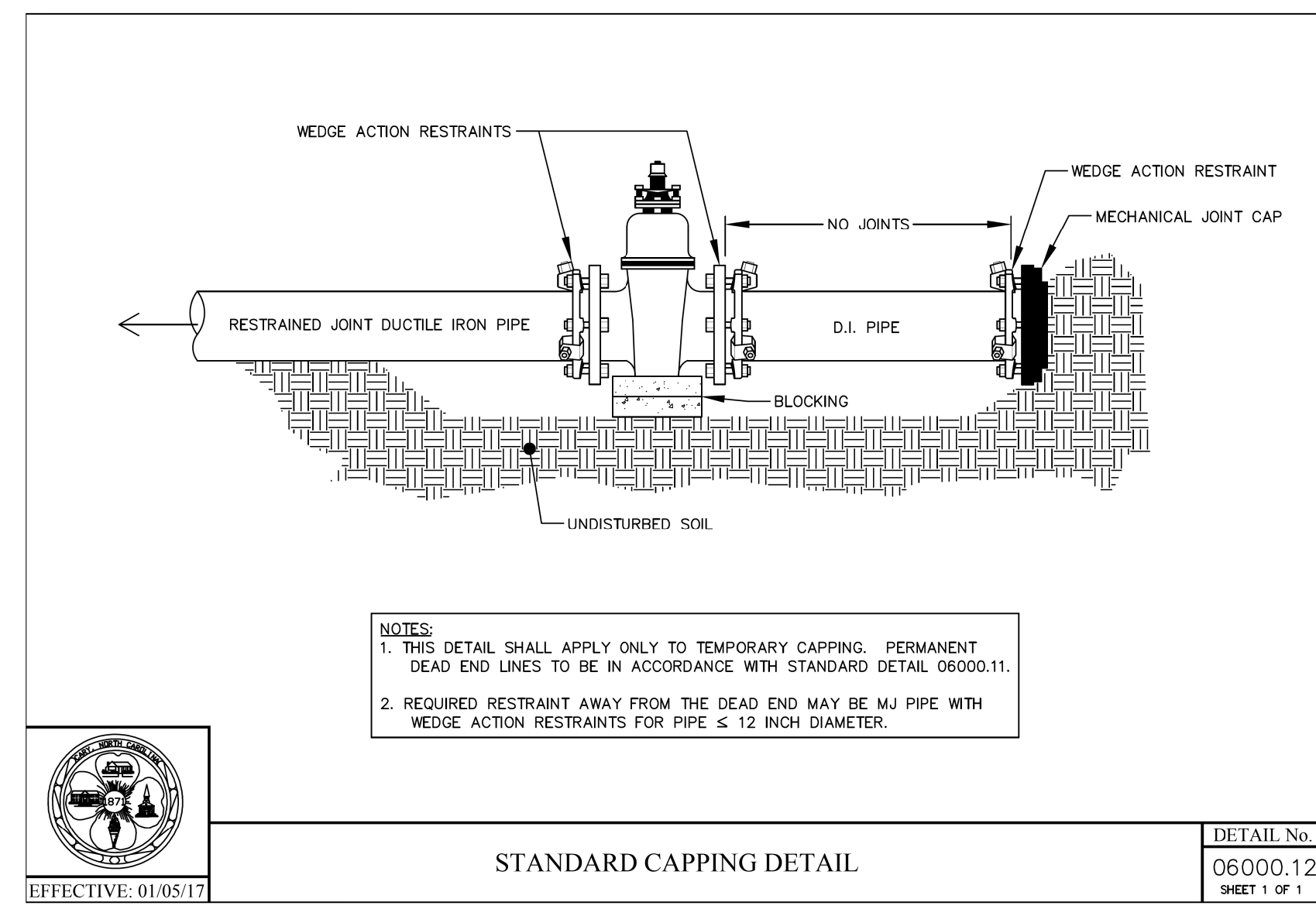
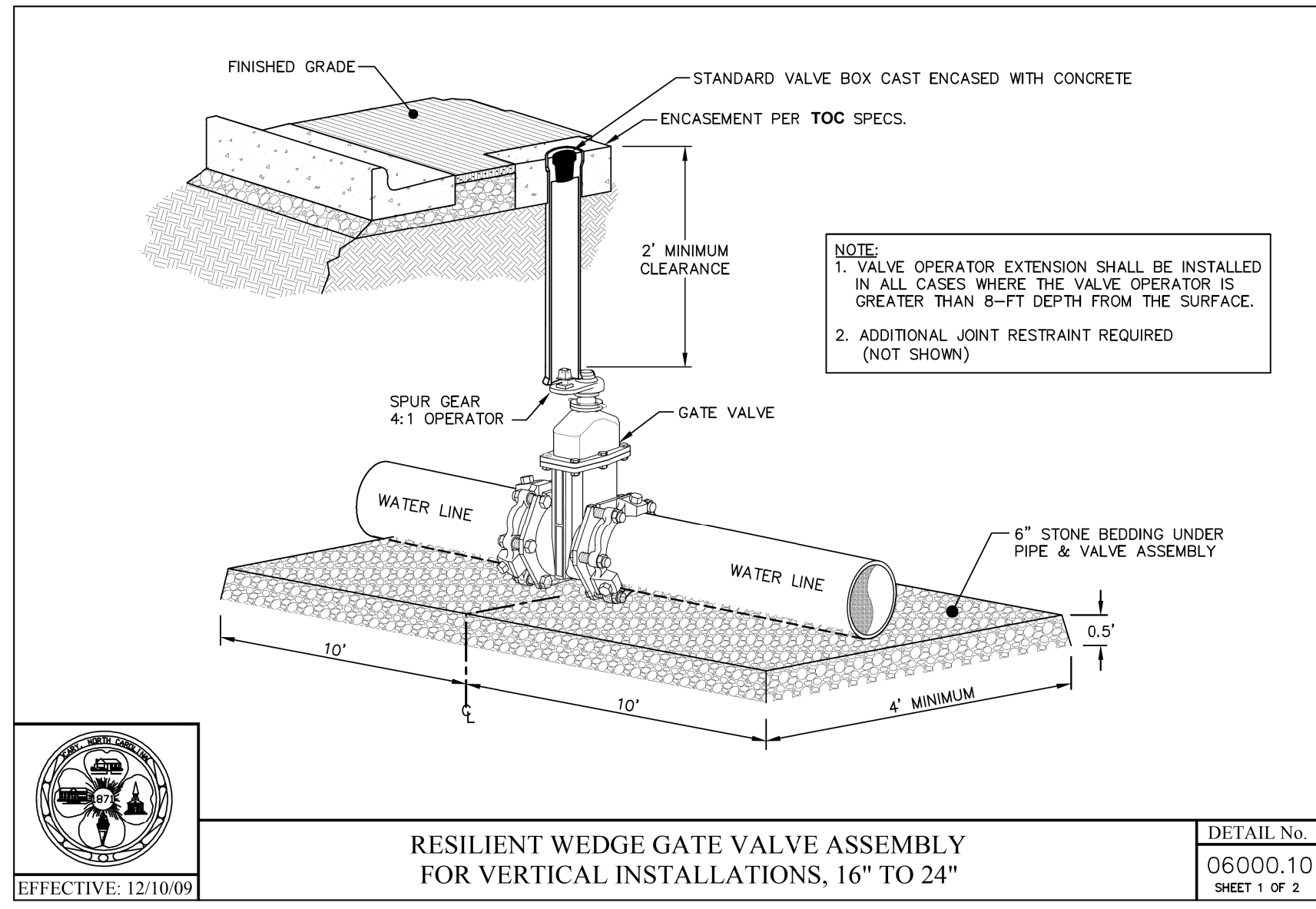


66
65
64
63
62
61
60
59
58
57
56
55
54
53
52
51
50
49
48
47
46
45
44
43
42
41
40
39
38
37
36
35
34
33
32
31
30
29
28
27
26
25
24
23
22
21
20
19
18
17
16
15
14
13
12
11
10
9
8
7
6
5
4
3
2
1

PROJECT TYPICAL DETAILS

PROJECT REFERENCE NO.	SHEET NO.
	UC - 4B
DESIGNED BY: LMS	
DRAWN BY:	
CHECKED BY: TWH	
APPROVED BY: LMS	
REVISED:	
NORTH CAROLINA DEPARTMENT OF TRANSPORTATION UTILITIES ENGINEERING SEC. PHONE: (919) 707-6690 FAX: (919) 250-4151	
UTILITY CONSTRUCTION PLANS ONLY	

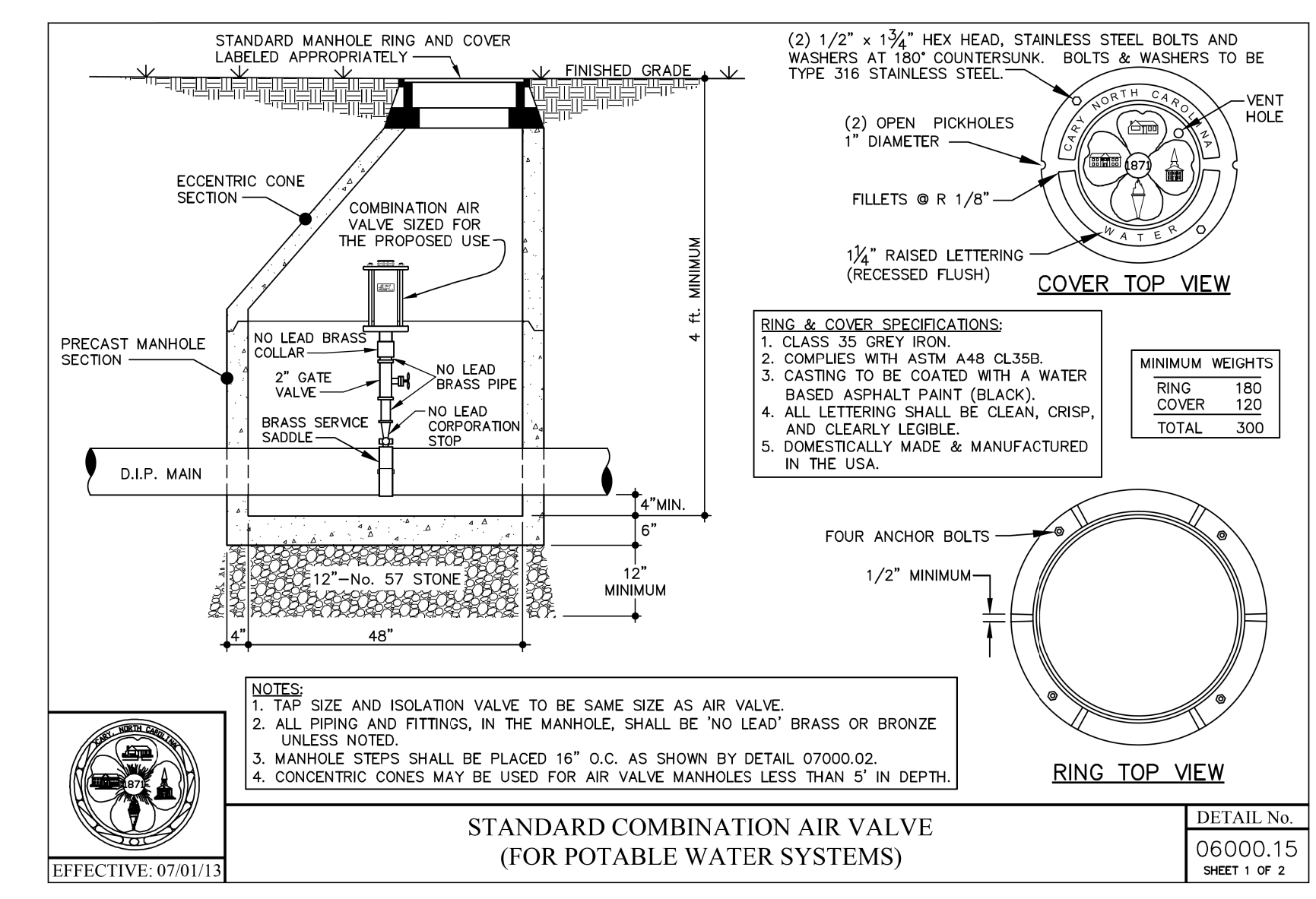
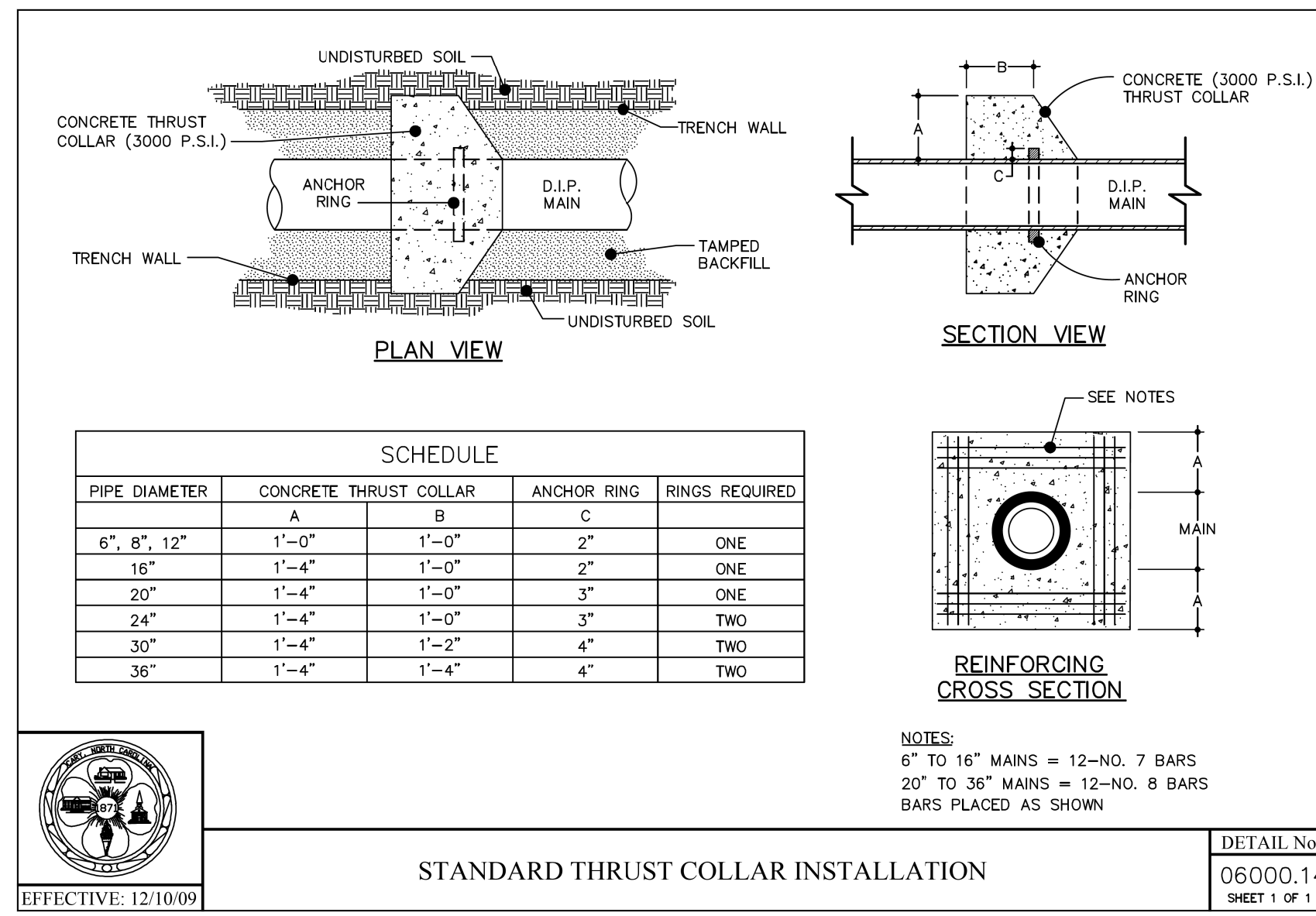
UTILITY CONSTRUCTION



NOMINAL PIPE DIAMETER INCHES	MINIMUM CONCRETE BLOCKING (C.Y.) *				
	TEES & DEAD ENDS	90° BEND	45° BEND	22½° BEND	11¼° BEND
4	1/3	1/3	1/3	1/3	1/3
6	1/3	1/3	1/3	1/3	1/3
8	1/3	1/2	1/3	1/3	1/3
10	2/3	3/4	1/2	1/3	1/3
12	3/4	1.0	2/3	1/3	1/3
14	1.0	1 1/2	3/4	1/2	1/3
16	1 1/3	2.0	1.0	1/2	1/3
18	1 2/3	2 1/3	1 1/3	2/3	1/3
20	2.0	3.0	1 2/3	3/4	1/2
24	3.0	4 1/3	2 2/3	1 1/3	2/3

NOTES:
 1) FITTING SHALL BE WRAPPED WITH A MINIMUM 4 MIL PLASTIC.
 2) NO CONCRETE SHALL COVER BOLTS OR GLANDS.
 * CONCRETE SHALL BE 3000 P.S.I. MIX.

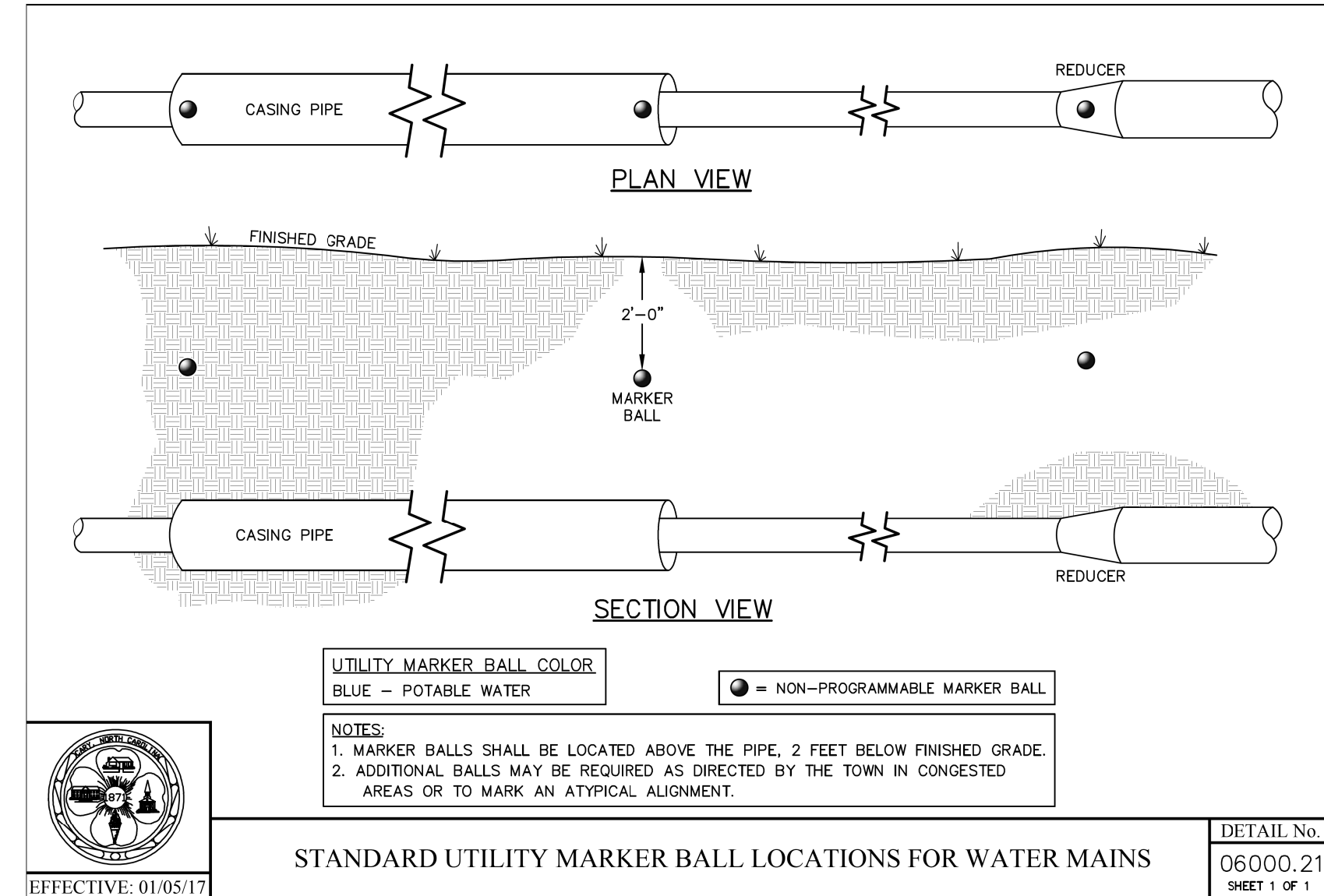
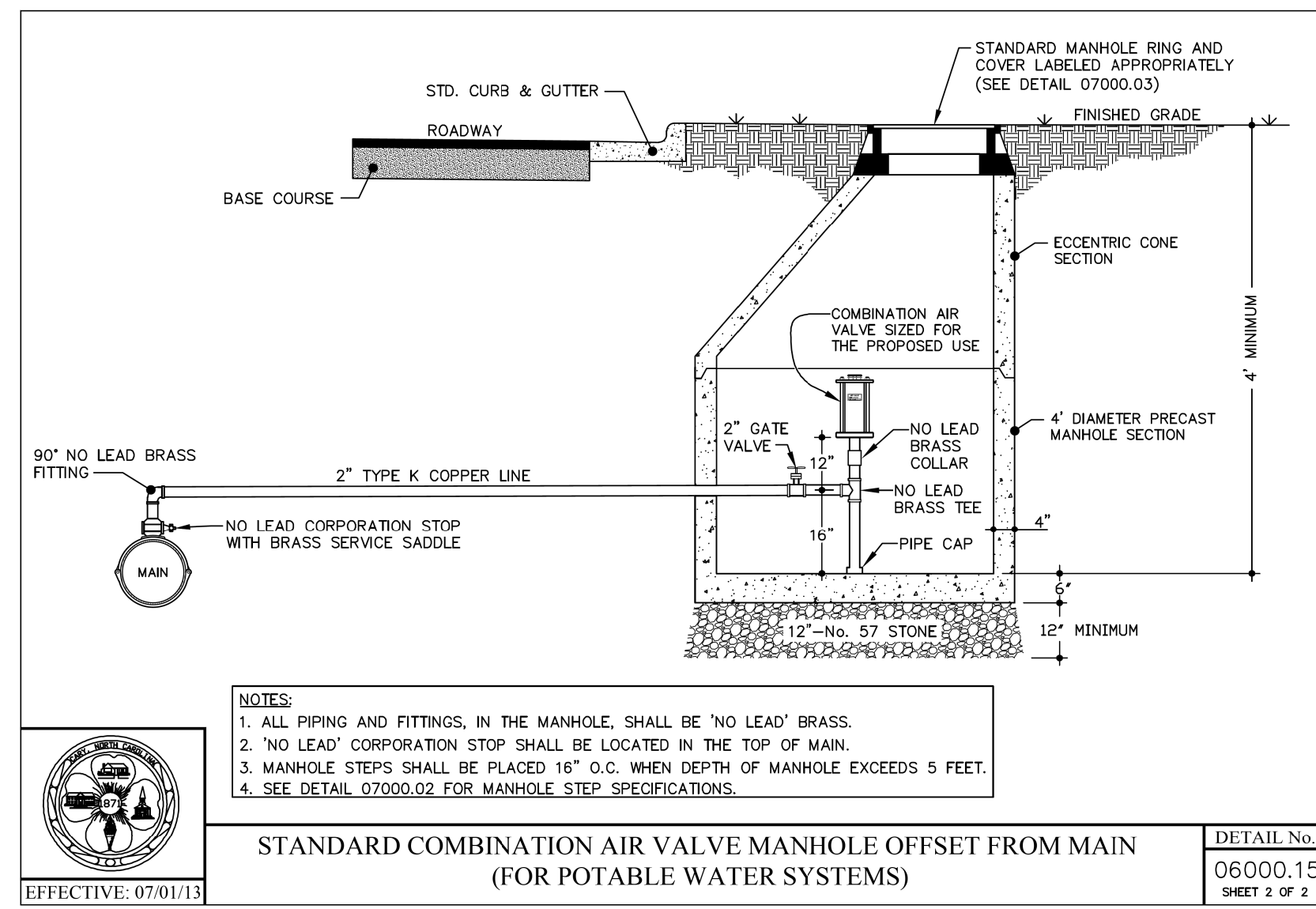
DETAIL No. 06000.13
SHEET 1 OF 1



PROJECT TYPICAL DETAILS

PROJECT REFERENCE NO.	SHEET NO.
	UC-4C
DESIGNED BY: LMS	
DRAWN BY:	
CHECKED BY: TWH	
APPROVED BY: LMS	
REVISED:	
NORTH CAROLINA DEPARTMENT OF TRANSPORTATION UTILITIES ENGINEERING SEC. PHONE: (919) 707-6690 FAX: (919) 250-4151	
UTILITY CONSTRUCTION PLANS ONLY	

UTILITY CONSTRUCTION

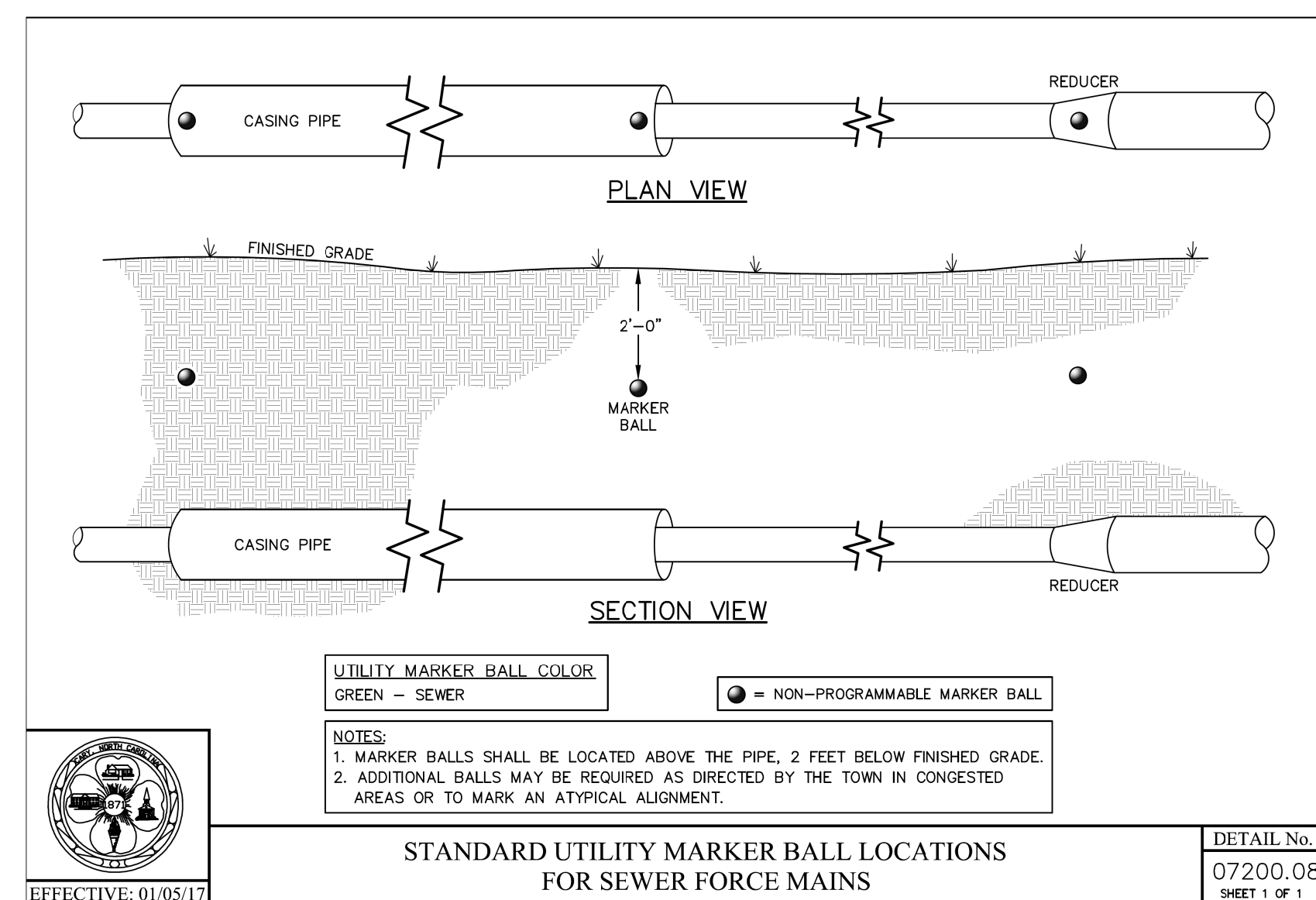
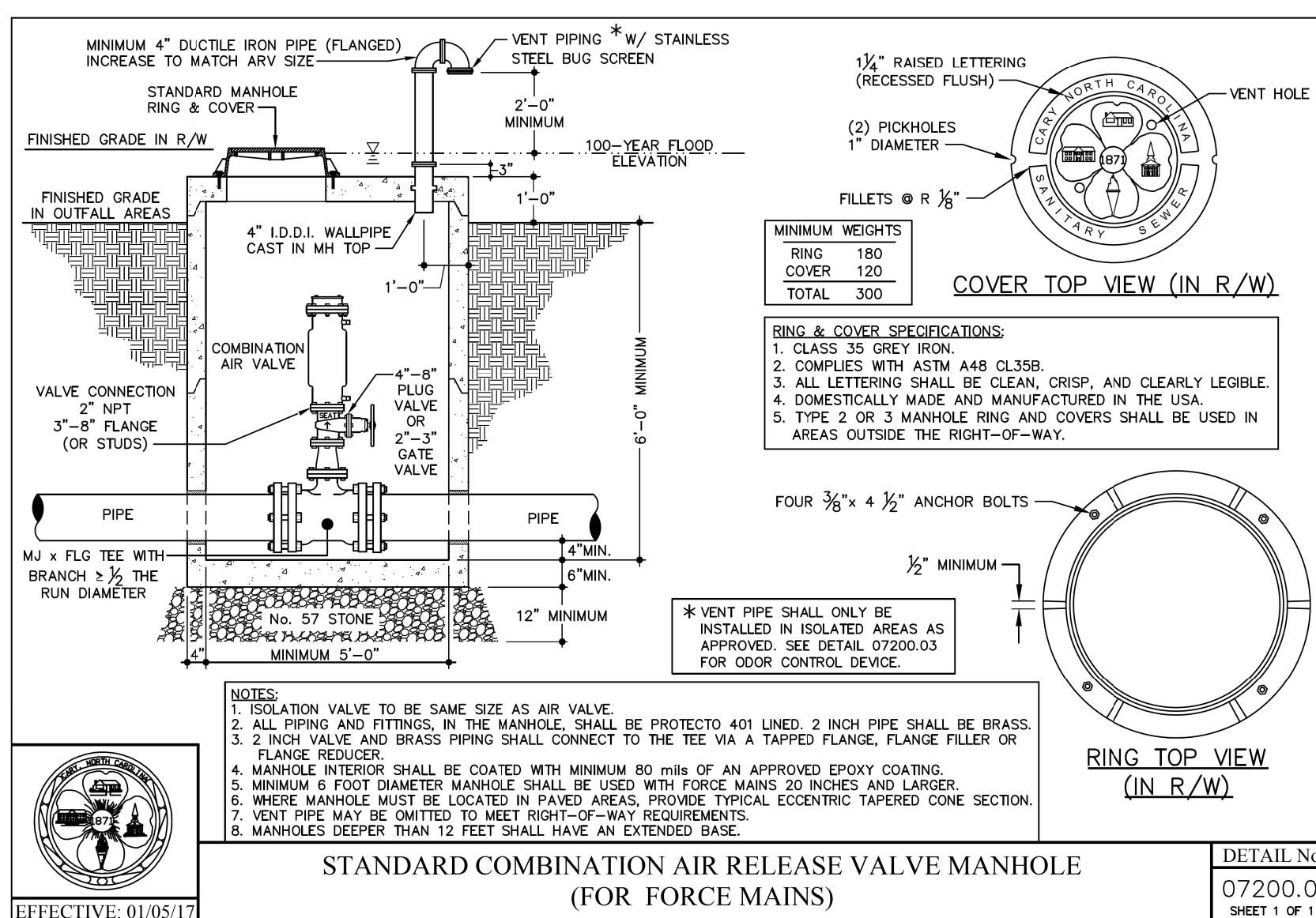


SPECIFICATION TIME (MIN-SEC) REQUIRED FOR PRESSURE DROP FROM 3-1/2 TO 2-1/2 PSIG

LENGTH OF TEST SECTION	NOMINAL PIPE DIAMETER (INCHES)															
	8	10	12	14	15	16	18	20	21	24	27	30	36	42		
25	7:33	9:26	11:20	13:13	14:10	15:11	17:00	18:53	19:48	22:40	25:30	28:19	34:00	39:40		
50	7:33	9:26	11:20	13:13	14:10	15:11	17:00	18:53	19:48	22:40	25:30	28:19	34:00	39:40		
75	7:33	9:26	11:20	13:13	14:10	15:11	17:00	18:53	19:48	22:40	25:30	28:19	34:00	52:35		
100	7:33	9:26	11:20	13:13	14:10	15:11	17:00	18:53	19:48	22:47	28:51	35:37	51:17	69:48		
125	7:33	9:26	11:20	13:13	14:10	15:11	17:00	19:47	21:48	28:29	36:03	44:31	64:06	87:15		
150	7:33	9:26	11:20	13:13	14:10	15:12	19:14	23:44	26:10	34:11	43:16	53:25	76:55	104:42		
175	7:33	9:26	11:20	13:34	15:35	17:44	22:26	27:42	30:32	39:53	50:28	62:19	89:45	122:10		
200	7:33	9:26	11:24	15:31	17:48	20:16	25:39	31:39	34:54	45:35	57:42	71:13	102:36	139:36		
225	7:33	9:26	12:49	17:27	20:02	22:48	28:51	35:37	39:16	51:17	64:54	80:08	115:24	157:03		
250	7:33	9:53	14:15	19:23	22:16	25:20	32:03	39:34	43:37	56:58	72:07	89:02	128:12	174:30		
275	7:33	10:52	15:40	21:20	24:29	27:52	35:16	43:31	47:59	62:40	79:19	97:56	141:00	191:57		
300	7:35	11:52	17:06	23:16	26:43	30:23	38:28	47:29	52:21	68:22	86:32	106:48	153:54	209:25		
350	8:52	13:51	19:57	27:09	31:10	35:27	44:52	55:24	61:05	79:46	101:00	124:42	179:30	244:19		
400	10:07	15:50	22:48	31:01	35:37	40:31	51:17	63:19	69:48	91:10	115:24	142:30	205:06	279:13		
450	11:23	17:48	25:39	34:54	40:04	45:35	57:42	71:13	78:31	102:36	129:48	160:18	230:48	314:07		
500	12:39	19:47	28:30	38:47	44:31	50:39	64:06	79:08	87:15	114:00	144:12	178:06	256:24	349:02		

DETAIL No. 07000.15
SHEET 1 OF 1

EFFECTIVE: 01/05/17



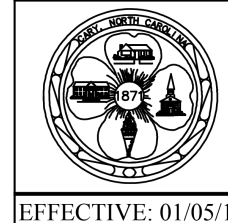
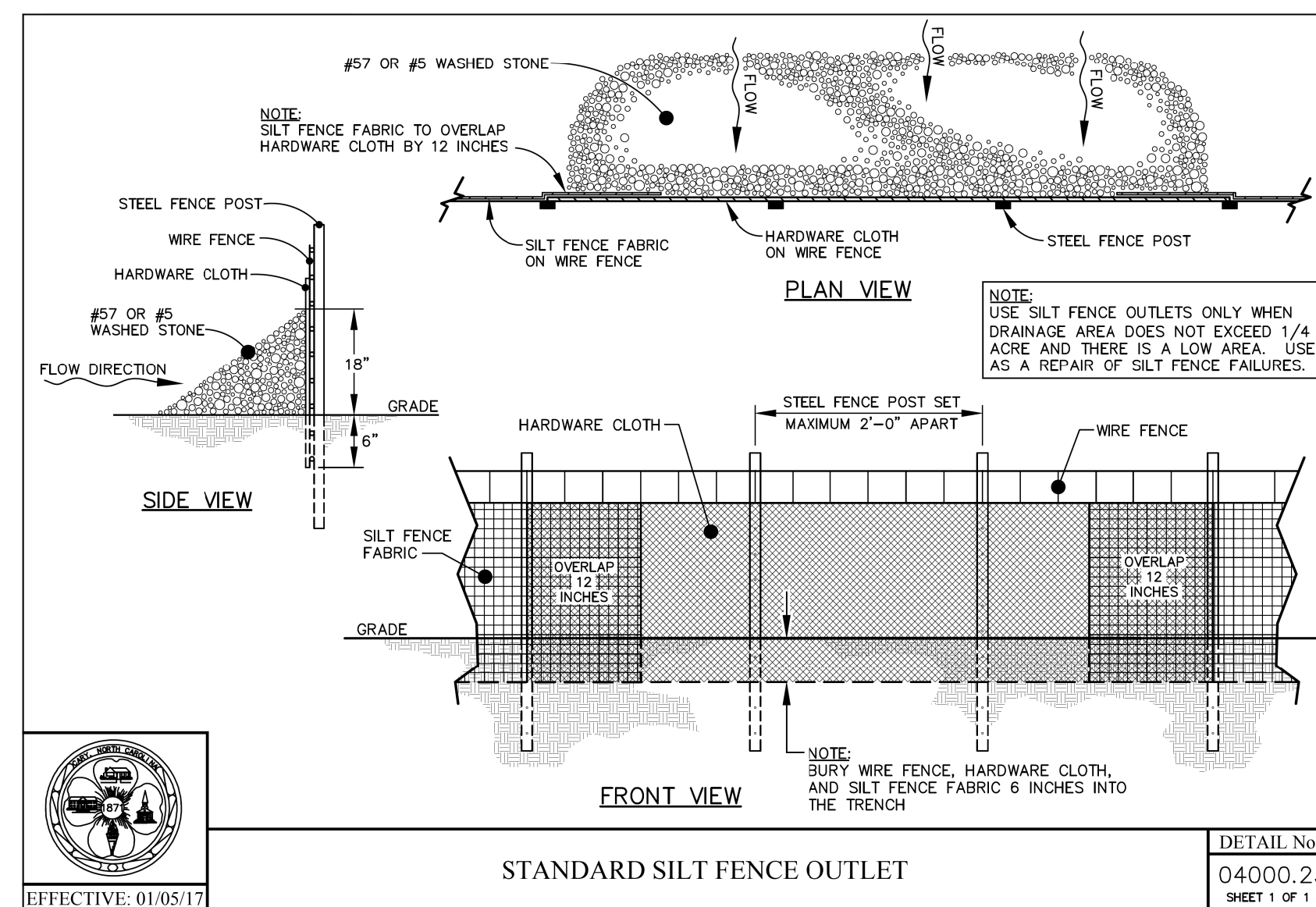
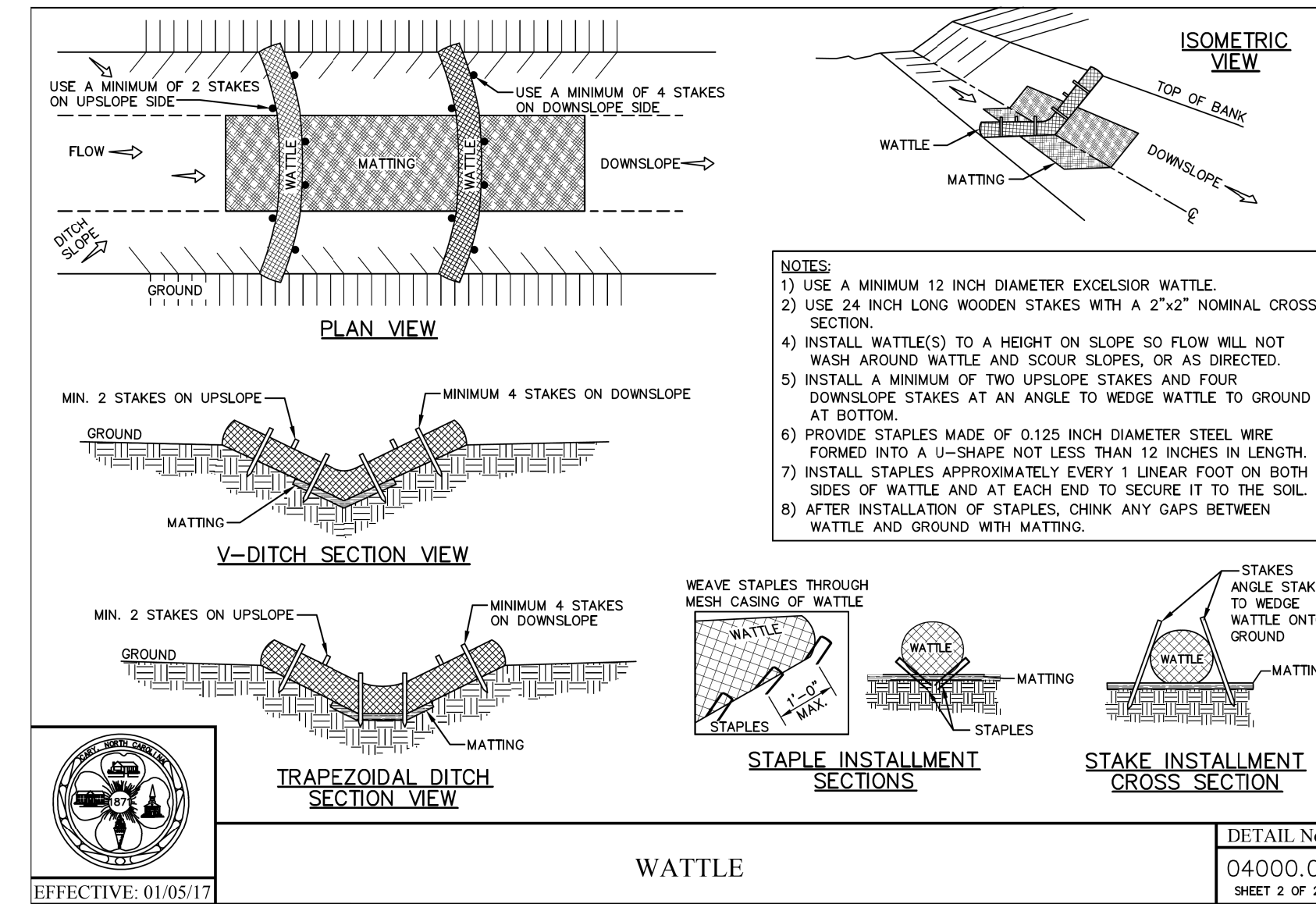
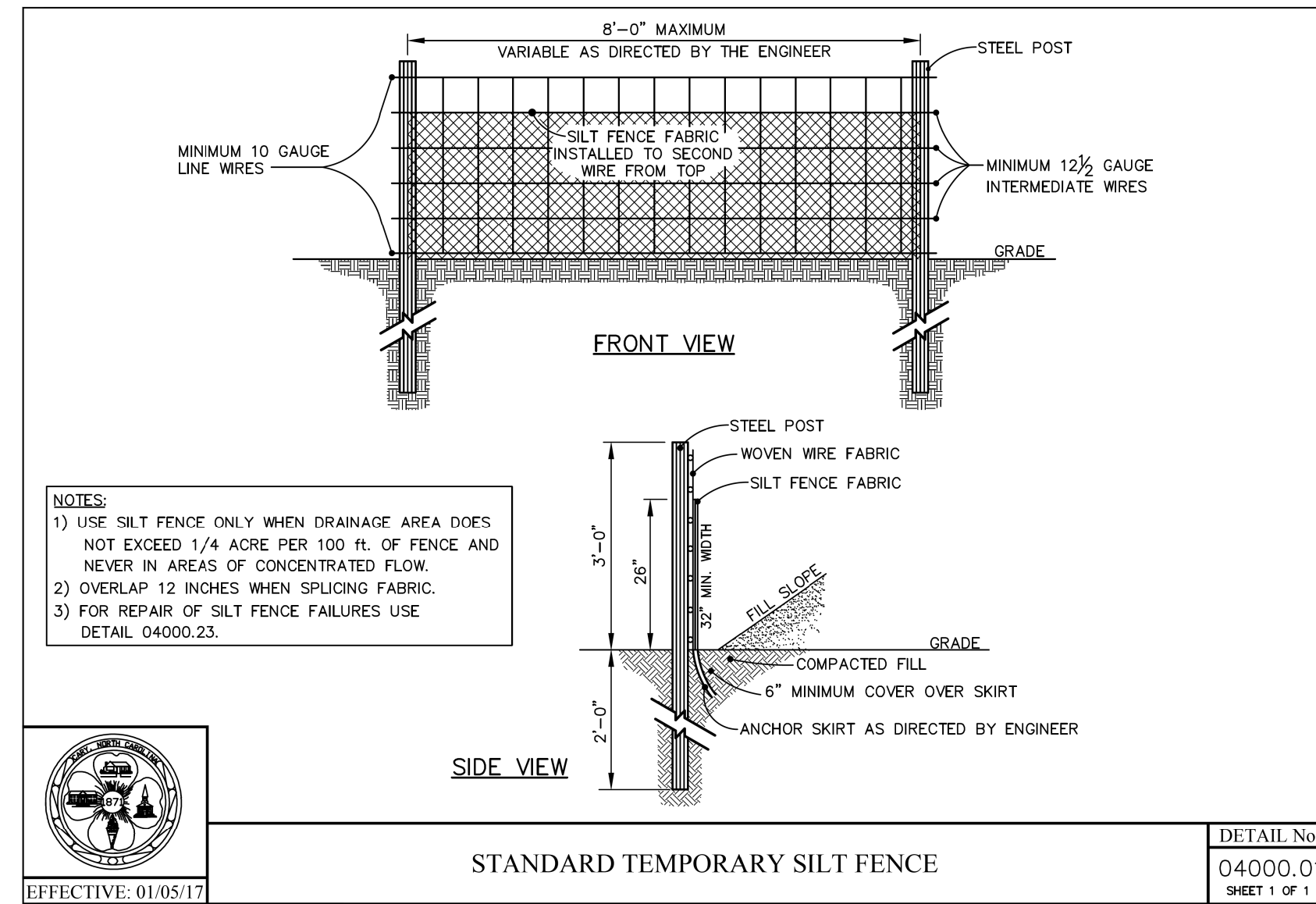
49
48
47
46
45
44
43
42
41
40
39
38
37
36
35
34
33
32
31
30
29
28
27
26
25
24
23
22
21
20
19
18
17
16
15
14
13
12
11
10
9
8
7
6
5
4
3
2
1

5/14/99

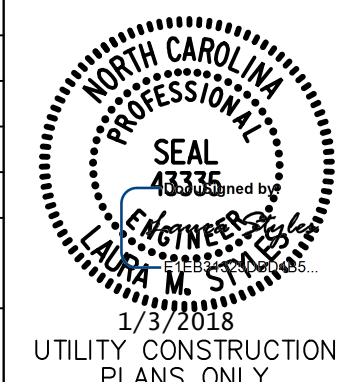
PROJECT REFERENCE NO.	SHEET NO.
	UC-4D
DESIGNED BY: LMS	
DRAWN BY:	
CHECKED BY: TWH	
APPROVED BY: LMS	
REVISED:	
NORTH CAROLINA DEPARTMENT OF TRANSPORTATION UTILITIES ENGINEERING SEC. PHONE: (919) 707-6690 FAX: (919) 250-4151	
UTILITY CONSTRUCTION PLANS ONLY	

PROJECT TYPICAL DETAILS

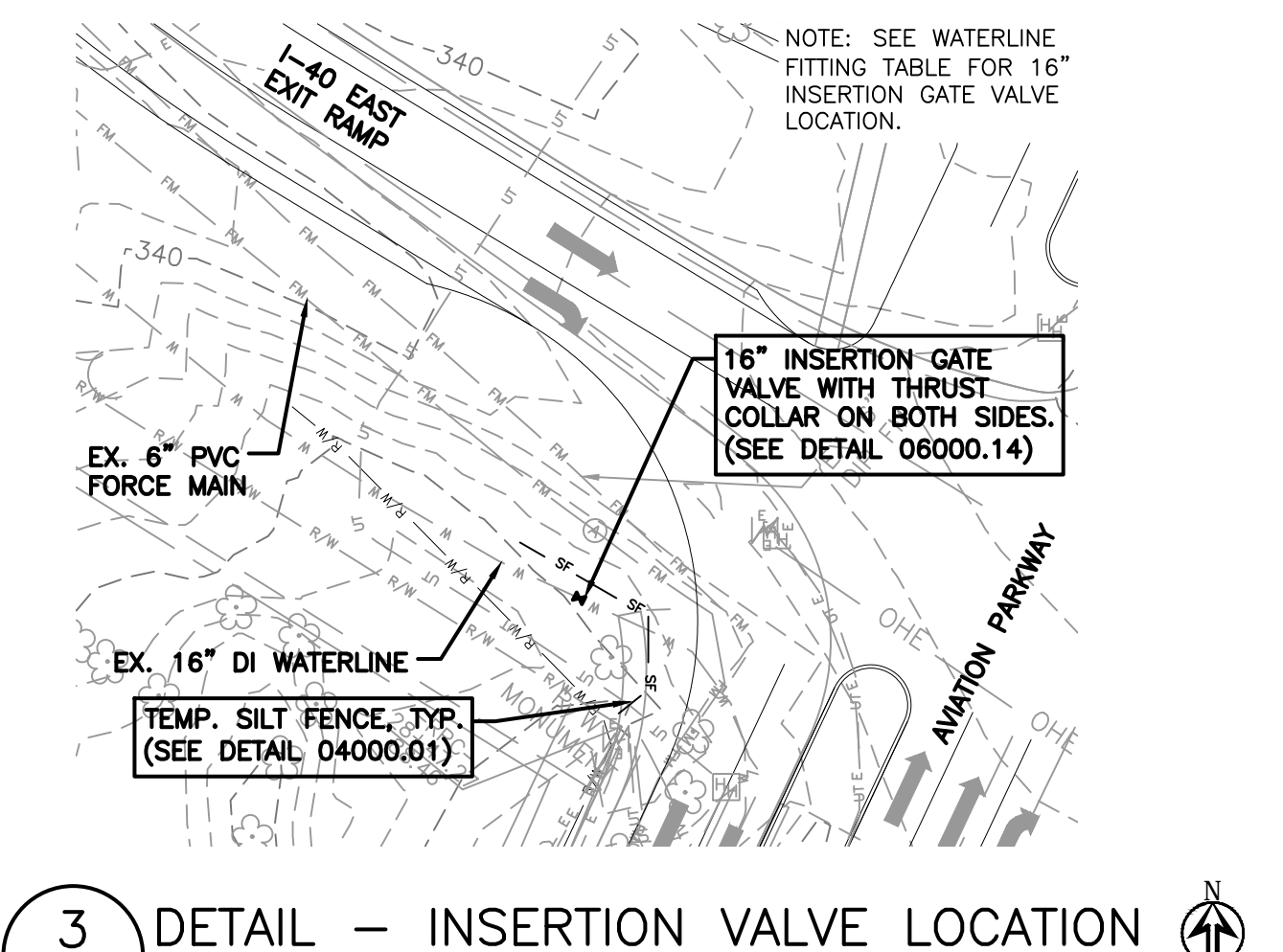
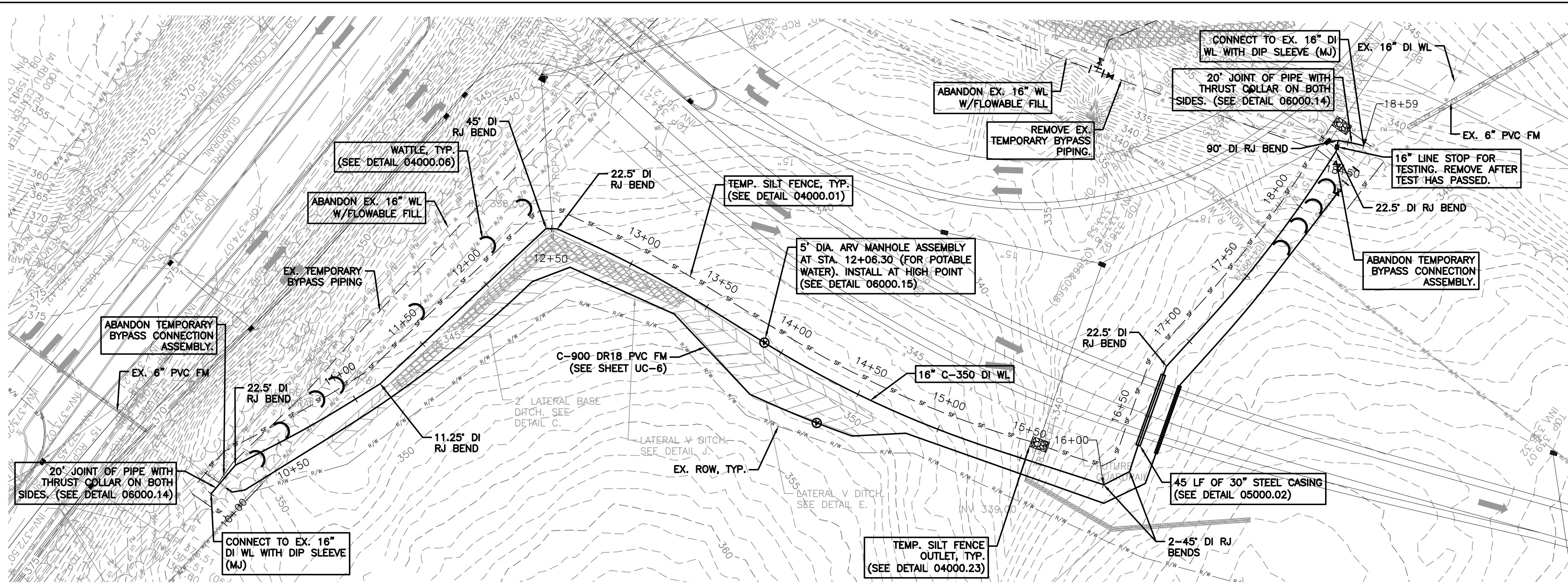
UTILITY CONSTRUCTION



46
45
44
43
42
41
40
39
38
37
36
35
34
33
32
31
30
29
28
27
26
25
24
23
22
21
20
19
18
17
16
15
14
13
12
11
10
9
8
7
6
5
4
3
2
1



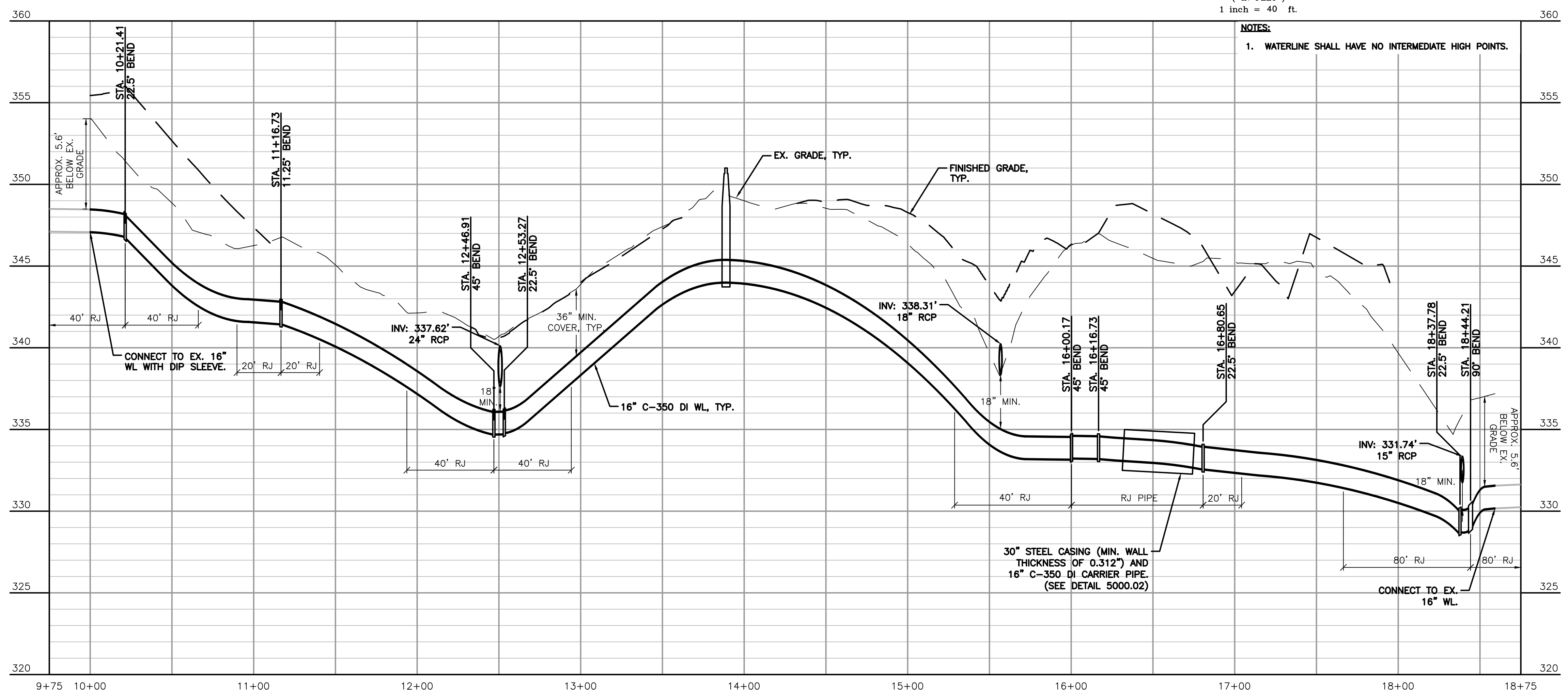
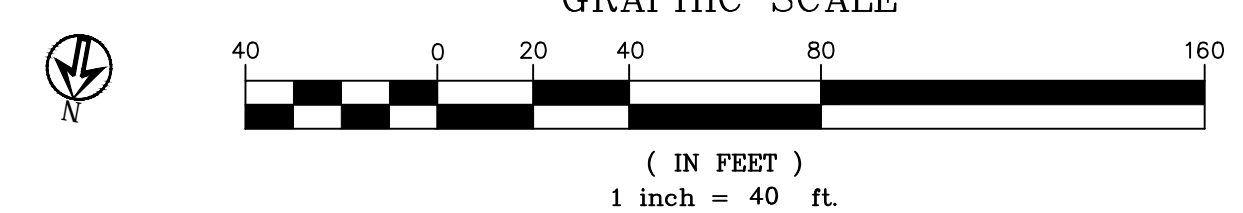
UTILITY CONSTRUCTION



NOTE:

- CONTRACTOR SHALL COMPLETE INSTALLATION OF 6-INCH C-900 DR18 PVC FORCE MAIN AND 16-INCH CL 350 DI WATERLINE PRIOR TO ANY GRADING ACTIVITIES IN THE NCDOT I-5506 QUADRANT B PROJECT AREA.
- LOCATION OF TEMPORARY BYPASS PIPING IS APPROXIMATE AND SHALL BE FIELD-VERIFIED AT THE TIME OF CONSTRUCTION.

1 PLAN - STA. 10+00 TO 18+59
 SCALE: 1" = 40'



- NOTES:
- WATERLINE SHALL HAVE NO INTERMEDIATE HIGH POINTS.

2 WL PROFILE - STA. 10+00 TO 18+59
 SCALE: 1" = 40'
 VERTICAL SCALE: 1" = 4'

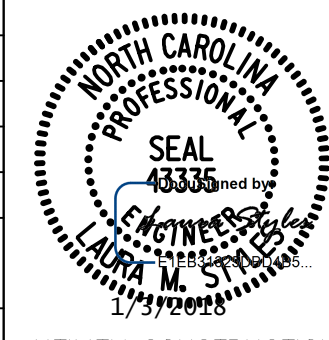
WATERLINE FITTINGS			
NORTHING	EASTING	STATION	FITTING TYPE
765507.2974	2060136.1881	N/A	EX. 16" BUTTERFLY VALVE
765339.4222	2060031.5200	10+21.41	22.5' BEND
765278.4684	2059958.3035	11+16.73	11.25' BEND
765173.8251	2059880.8644	12+46.91	45' BEND
765172.8844	2059874.5678	12+53.27	22.5' BEND
765260.5311	2059540.2048	16+00.17	45' BEND
765250.4524	2059527.0626	16+16.73	45' BEND
765187.3101	2059517.1579	16+80.65	22.5' BEND
765048.6815	2059443.7986	18+37.78	22.5' BEND
765042.2526	2059443.7916	18+44.21	90' BEND
763974.8218	2059369.3766	N/A	16" INSERTION GATE VALVE

4 STAKING TABLES

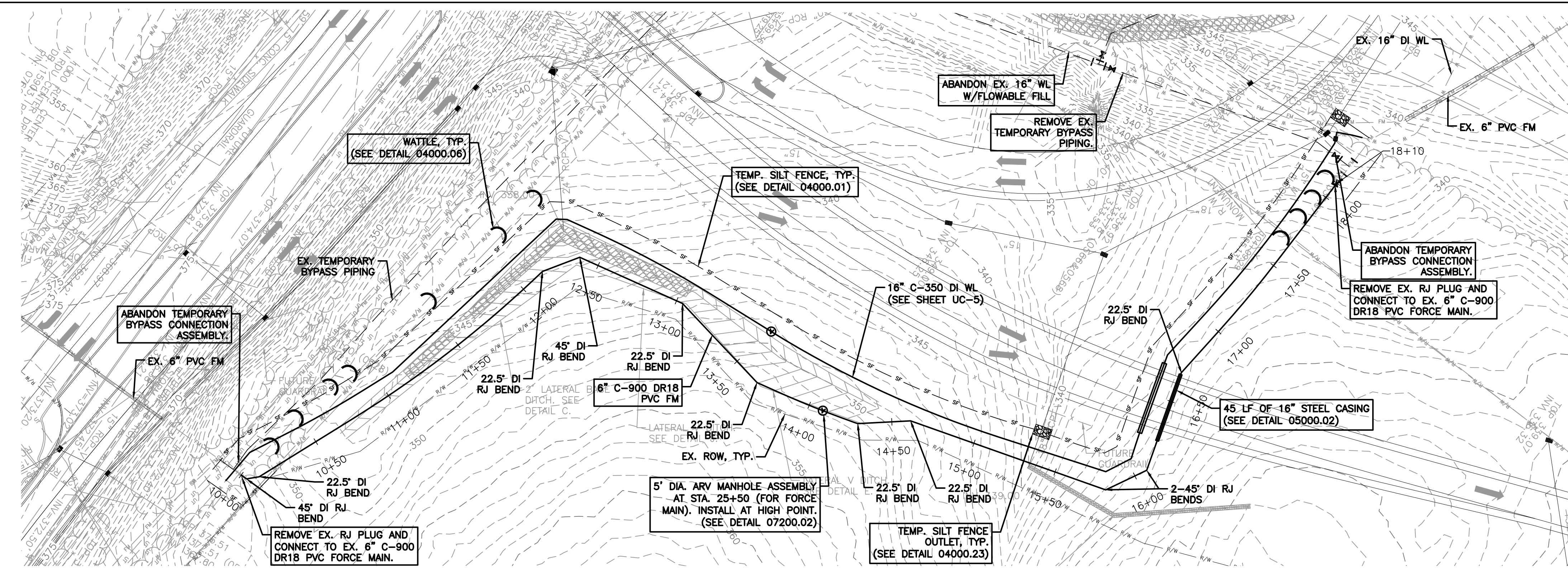
WATER LINE SEQUENCE:

- CONTRACTOR SHALL COORDINATE WITH THE TOWN OF CARY A MINIMUM OF 10 DAYS PRIOR TO INTERRUPTION OF SERVICE.
- ESTABLISH TRAFFIC CONTROL IN ACCORDANCE WITH MUTCD, NCDOT, AND TOWN OF CARY REQUIREMENTS.
- INSTALL THE 16-INCH INSERTION VALVE AS SHOWN ON WL-1.0/3. CONTRACTOR TO FIELD LOCATE EXISTING 16-INCH WL.
- ADJUST TEMPORARY SEWER BYPASS PIPING AT STA. 10+25 AS REQUIRED TO INSTALL NEW 16-INCH WATERLINE WITHOUT HINDRANCE.
- CONSTRUCT WATERLINE, FITTINGS, AND RESTRAINTS FROM STA. 10+20 TO STA. 16+39.72.
- CONSTRUCT WATERLINE, FITTINGS, VALVE, AND THRUST COLLAR FROM STA. 10+00 TO STA. 10+20.
- CONNECT 16-INCH C-350 DI WL TO EXISTING 16-INCH DI WL AT STA. 16+41 WITH 20FT JOINT OF PIPE AND THRUST COLLAR. INSTALL LINE STOP AT STA. 16+35.
- INSTALL, TEST, AND DISINFECT NEW WORK PRIOR TO PLACING IN SERVICE.
- DISCONNECT PIPE TO BE ABANDONED, DRAIN, AND PUMP ENTIRELY FULL WITH FLOWABLE FILL.
- RESTORE PROPERTY TO PRE-CONSTRUCTION CONDITION.

NOTE: FORCE MAIN AND WATERLINE WORK SHALL BE PLACED IN OPERATION PRIOR TO ADDING FILL DIRT ON EXISTING PIPING.



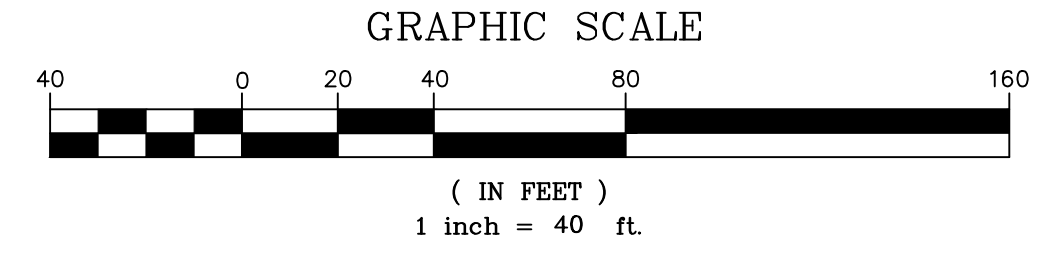
UTILITY CONSTRUCTION



NOTE:

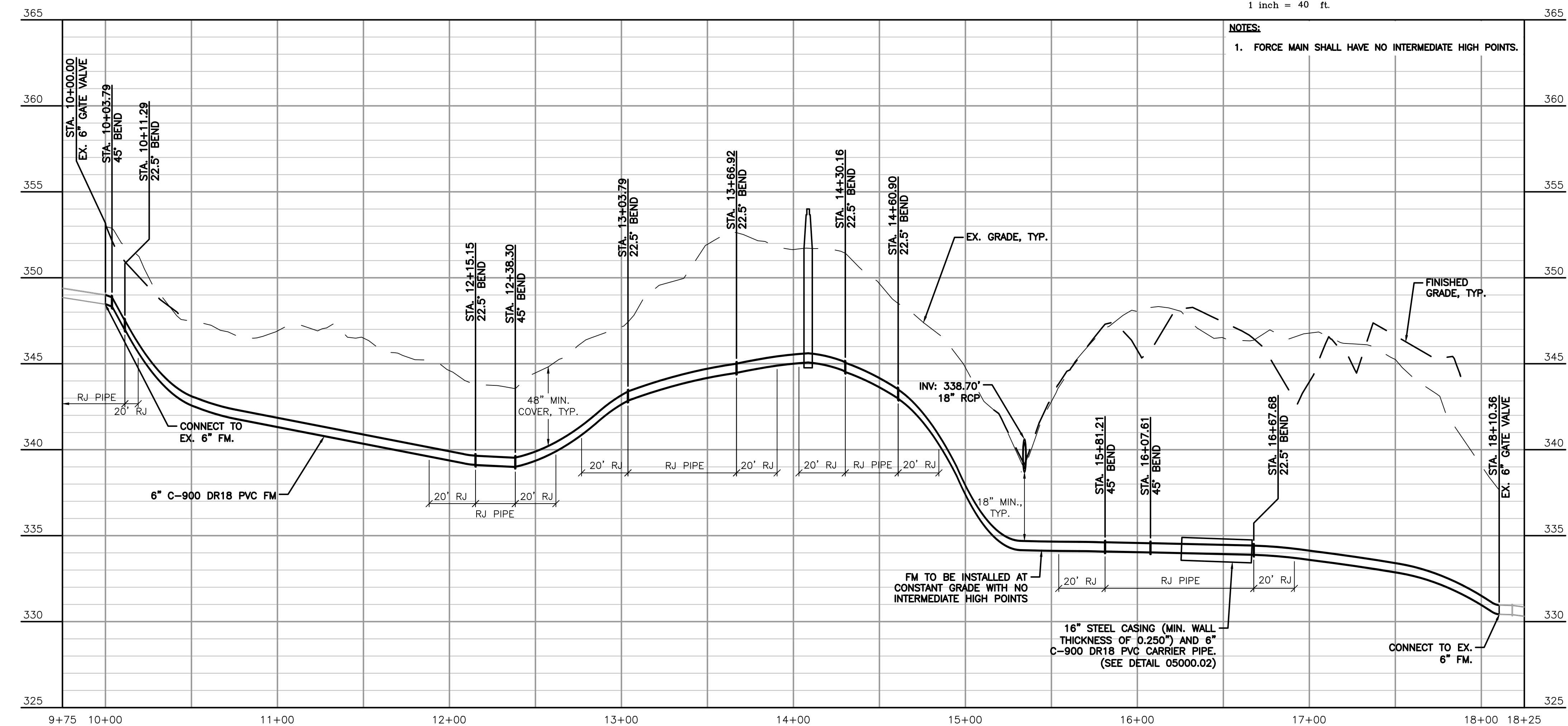
- CONTRACTOR SHALL COMPLETE INSTALLATION OF 6-INCH C-900 DR18 PVC FORCE MAIN AND 16-INCH CL 350 DI WATERLINE PRIOR TO ANY GRADING ACTIVITIES IN THE NCDOT I-5506 QUADRANT B PROJECT AREA.
- LOCATION OF TEMPORARY BYPASS PIPING IS APPROXIMATE AND SHALL BE FIELD-VERIFIED AT THE TIME OF CONSTRUCTION.

1 PLAN - STA. 10+00 TO 18+10
 SCALE: 1" = 40'



3 STAKING TABLES

FORCE MAIN FITTINGS			
NORTHING	EASTING	STATION	FITTING TYPE
765354.8662	2060030.6125	10+03.79	45° BEND
765352.3327	2060023.5550	10+11.29	22.5° BEND
765205.1754	2059883.1844	12+15.15	22.5° BEND
765193.1894	2059863.3889	12+38.30	45° BEND
765208.8193	2059799.7820	13+03.79	22.5° BEND
765246.1973	2059748.9082	13+66.92	22.5° BEND
765259.1156	2059687.0260	14+30.16	22.5° BEND
765251.9800	2059657.1297	14+60.90	22.5° BEND
765270.9587	2059538.3218	15+81.21	45° BEND
765255.4714	2059516.9459	16+07.61	45° BEND
765196.1554	2059507.4705	16+67.68	22.5° BEND



2 FM PROFILE - STA. 10+00 TO 18+10
 SCALE: 1" = 40'
 VERTICAL SCALE: 1" = 4'

- NOTES:
- FORCE MAIN SHALL HAVE NO INTERMEDIATE HIGH POINTS.

FORCE MAIN SEQUENCE:

- CONTRACTOR SHALL COORDINATE WITH THE TOWN OF CARY UTILITY DIVISION PRIOR TO CHANGES IN THE FORCE MAIN OPERATIONS.
- IMMEDIATELY NOTIFY THE OWNER SHOULD A SANITARY SEWER OVERFLOW OCCUR. TAKE NECESSARY ACTION TO CLEAN UP AND DISINFECT THE SPILLAGE TO THE SATISFACTION OF THE OWNER AND OTHER GOVERNMENTAL AGENCIES WITH JURISDICTION.
- CONSTRUCT FORCE MAIN, FITTINGS, VALVES, AND RESTRAINTS. CONNECT TO THE EXISTING TEMPORARY BYPASS CONNECTION TEES.
- INSTALL, FLUSH, AND TEST NEW WORK PRIOR TO PLACING IN SERVICE.
- THE TEMPORARY BYPASS PIPING SHALL BE FLUSHED WITH FRESH WATER AND DRAINED INTO THE WASTEWATER COLLECTION SYSTEM PRIOR TO DISASSEMBLY. CUT HDPE IN 20-FOOT LENGTHS AND DELIVER TO THE TOWN OF CARY PUBLIC WORKS WAREHOUSE LOCATED AT 400 JAMES JACKSON AVE., CARY, NC. THE TOWN WILL UNLOAD PIPE.
- ABANDON THE BYPASS CONNECTION ASSEMBLIES AT STA. 10+00 AND STA. 18+10. THE ASSOCIATED GATE VALVES SHALL BE COMPLETELY CLOSED, THE VALVE BOX AND RISER PIPE REMOVED AND DISPOSED OF, AND THE RESULTANT VOID SPACE BACKFILLED WITH A MINIMUM 500-PSI COMPRESSIVE STRENGTH, QUICK SETTING, NON-EXCAVATABLE FLOWABLE FILL.
- RESTORE PROPERTY TO PRE-CONSTRUCTION CONDITION.

NOTE: FORCE MAIN AND WATERLINE WORK SHALL BE PLACED IN OPERATION PRIOR TO ADDING FILL DIRT ON EXISTING PIPING.