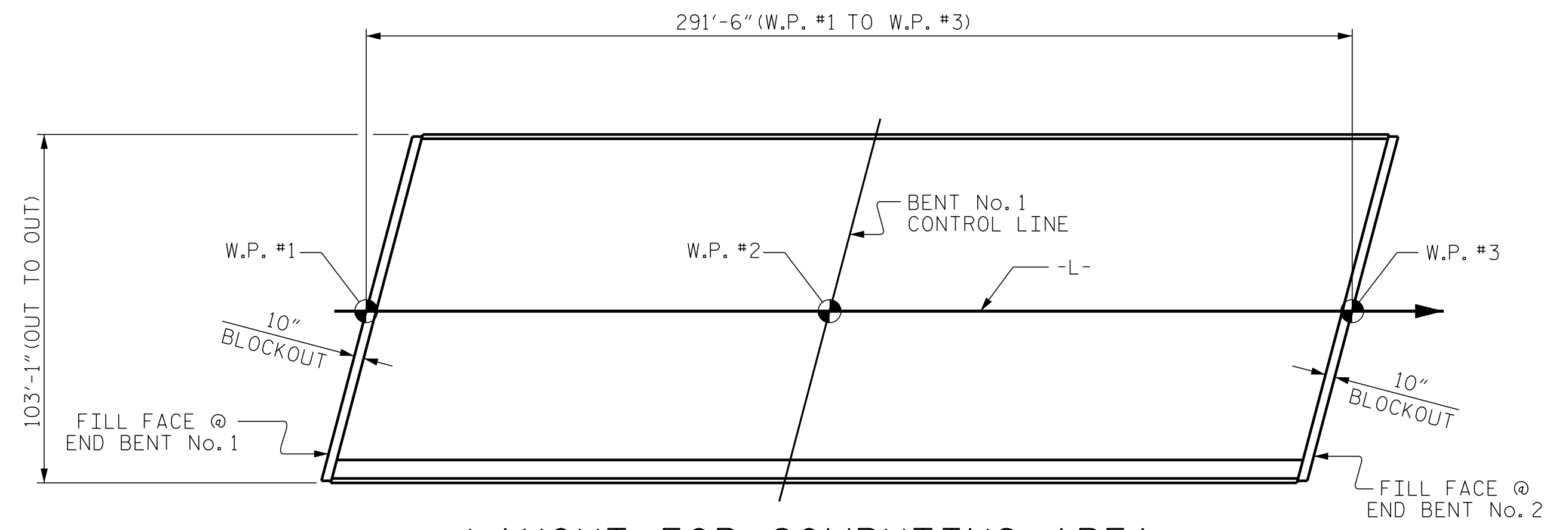
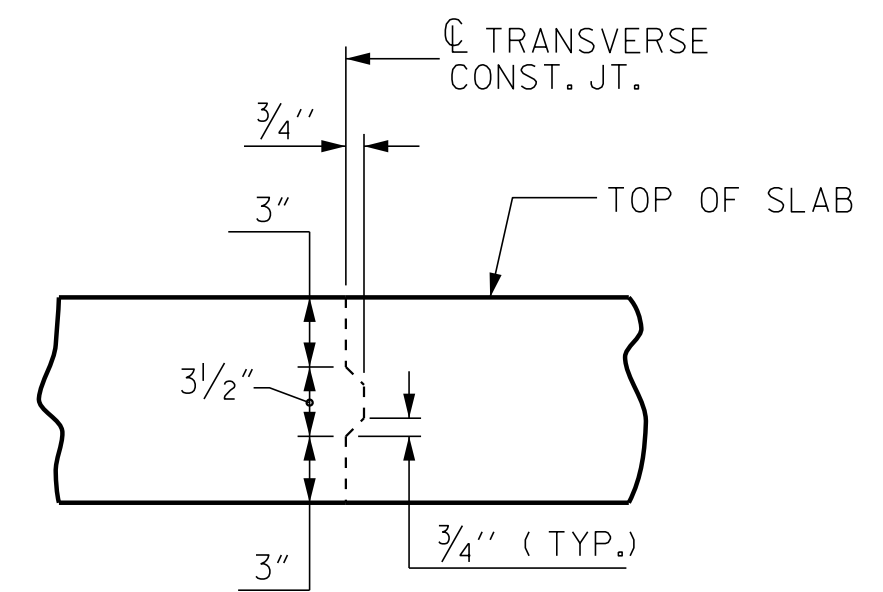


POURING SEQUENCE



LAYOUT FOR COMPUTING AREA REINFORCED CONCRETE DECK SLAB (SQ. FT. = 30,049)



TRANSVERSE CONSTRUCTION JOINT DETAIL

NOTE: REINFORCING STEEL IN SLAB NOT SHOWN. LONGITUDINAL REINFORCING STEEL SHALL BE CONTINUOUS THRU JOINT

SUPERSTRUCTURE REINFORCING STEEL LENGTHS ARE BASED ON THE FOLLOWING MINIMUM SPLICE LENGTHS					
BAR SIZE	SUPERSTRUCTURE EXCEPT APPROACH SLABS, PARAPET, AND BARRIER RAIL		APPROACH SLABS		PARAPET AND BARRIER RAIL
	EPOXY COATED	UNCOATED	EPOXY COATED	UNCOATED	
#4	2'-0"	1'-9"	2'-0"	1'-9"	2'-9"
#5	2'-6"	2'-2"	2'-6"	2'-2"	3'-5"
#6	3'-0"	2'-7"	3'-10"	2'-7"	4'-4"
#7	5'-3"	3'-6"			
#8	6'-10"	4'-7"			

GROOVING BRIDGE FLOORS		
APPROACH SLABS	STAGE I	2,769 SQ.FT.
	STAGE II	1,675 SQ.FT.
BRIDGE DECK	STAGE I	16,517 SQ.FT.
	STAGE II	10,142 SQ.FT.
TOTAL		31,103 SQ.FT.

CONCRETE BREAKDOWN		
CLASS AA CONCRETE (CU. YDS.)		
	STAGE I	STAGE II
POUR #1	147.9	97.7
POUR #2	184.4	121.4
POUR #3	238.6	157.1
POUR #4	125.3	82.2
CLOSURE POUR	---	54.9
TOTALS	696.2	513.3

BILL OF MATERIAL

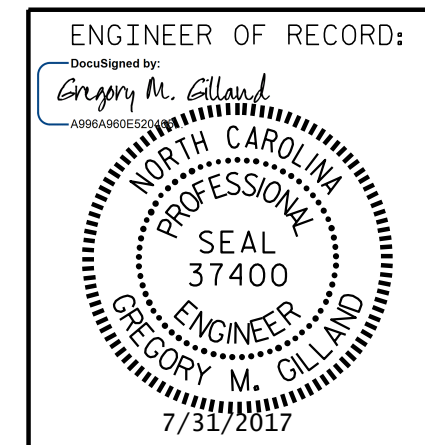
STAGE I										STAGE II													
BAR	NO.	SIZE	TYPE	LENGTH	WEIGHT	BAR	NO.	SIZE	TYPE	LENGTH	WEIGHT	BAR	NO.	SIZE	TYPE	LENGTH	WEIGHT	BAR	NO.	SIZE	TYPE	LENGTH	WEIGHT
* A1	597	#5	STR	59'-5"	36997	A214	2	#5	STR	36'-2"	75	* A3	609	#5	STR	38'-11"	24719	* B1	57	#7	STR	27'-0"	3146
A2	597	#5	STR	59'-5"	36997	A215	2	#5	STR	34'-5"	72	A4	609	#5	STR	38'-11"	24719	* B2	58	#4	STR	29'-9"	1153
* A101	2	#5	STR	58'-9"	123	A216	2	#5	STR	32'-9"	68	* A301	2	#5	STR	38'-1"	79	* B3	114	#7	STR	56'-2"	13088
* A102	2	#5	STR	57'-0"	119	A217	2	#5	STR	31'-0"	65	* A302	2	#5	STR	36'-4"	76	* B4	87	#4	STR	26'-6"	1540
* A103	2	#5	STR	55'-3"	115	A218	2	#5	STR	29'-3"	61	* A303	2	#5	STR	34'-8"	72	* B5	57	#7	STR	30'-6"	3553
* A104	2	#5	STR	53'-7"	112	A219	2	#5	STR	27'-6"	57	* A304	2	#5	STR	32'-11"	69	* B6	11	#4	STR	28'-2"	207
* A105	2	#5	STR	51'-10"	108	A220	2	#5	STR	25'-9"	54	* A305	2	#5	STR	31'-2"	65	B7	280	#5	STR	59'-8"	17425
* A106	2	#5	STR	50'-1"	104	A221	2	#5	STR	24'-0"	50	* A306	2	#5	STR	29'-5"	61	* D1	628	#5	STR	5'-11"	3875
* A107	2	#5	STR	48'-4"	101	A222	2	#5	STR	22'-4"	47	* A307	2	#5	STR	27'-8"	58	D2	628	#5	STR	5'-5"	3548
* A108	2	#5	STR	46'-7"	97	A223	2	#5	STR	20'-7"	43	* A308	2	#5	STR	25'-11"	54	K2	48	#4	STR	23'-1"	740
* A109	2	#5	STR	44'-10"	94	A224	2	#5	STR	18'-10"	39	* A309	2	#5	STR	24'-3"	51	S1	76	#4	1	11'-11"	605
* A110	2	#5	STR	43'-2"	90	A225	2	#5	STR	17'-1"	36	* A310	2	#5	STR	22'-6"	47	S2	76	#4	1	11'-4"	575
* A111	2	#5	STR	41'-5"	86	A226	2	#5	STR	15'-4"	32	* A311	2	#5	STR	20'-9"	43	U1	76	#4	2	14'-1"	715
* A112	2	#5	STR	39'-8"	83	A227	2	#5	STR	13'-7"	28	* A312	2	#5	STR	19'-0"	40	U2	76	#4	2	13'-3"	18
* A113	2	#5	STR	37'-11"	79	A228	2	#5	STR	11'-11"	25	* A313	2	#5	STR	17'-3"	36	REINFORCING STEEL LBS. 48,074					
* A114	2	#5	STR	36'-2"	75	A229	2	#5	STR	10'-2"	21	* A314	2	#5	STR	15'-6"	32	* EPOXY COATED REINFORCING STEEL LBS. 53,370					
* A115	2	#5	STR	34'-5"	72	A230	2	#5	STR	8'-5"	18	* A315	2	#5	STR	13'-10"	29	— BAR TYPES —					
* A116	2	#5	STR	32'-9"	68	A231	2	#5	STR	6'-8"	14	* A316	2	#5	STR	12'-1"	25						
* A117	2	#5	STR	31'-0"	65	A232	2	#5	STR	4'-11"	10	* A317	2	#5	STR	10'-4"	22	ALL BAR DIMENSIONS ARE OUT TO OUT					
* A118	2	#5	STR	29'-3"	61	A233	2	#5	STR	3'-2"	7	* A318	2	#5	STR	8'-7"	18						
* A119	2	#5	STR	27'-6"	57	* B1	79	#7	STR	27'-0"	4360	* A319	2	#5	STR	6'-10"	14						
* A120	2	#5	STR	25'-9"	54	* B2	80	#4	STR	29'-9"	1590	* A320	2	#5	STR	5'-1"	11						
* A121	2	#5	STR	24'-0"	50	* B3	158	#7	STR	56'-2"	18139	* A321	2	#5	STR	3'-5"	7						
* A122	2	#5	STR	22'-4"	47	* B4	120	#4	STR	26'-6"	2124	A401	2	#5	STR	38'-1"	79						
* A123	2	#5	STR	20'-7"	43	* B5	79	#7	STR	30'-6"	4925	A402	2	#5	STR	36'-4"	76						
* A124	2	#5	STR	18'-10"	39	* B6	11	#4	STR	28'-2"	207	A403	2	#5	STR	34'-8"	72						
* A125	2	#5	STR	17'-1"	36	B7	370	#5	STR	59'-8"	23026	A404	2	#5	STR	32'-11"	69						
* A126	2	#5	STR	15'-4"	32	* D1	628	#5	STR	5'-11"	3875	A405	2	#5	STR	31'-2"	65						
* A127	2	#5	STR	13'-7"	28	D2	628	#5	STR	5'-5"	3548	A406	2	#5	STR	29'-5"	61						
* A128	2	#5	STR	11'-11"	25	K1	72	#4	STR	21'-9"	1046	A407	2	#5	STR	27'-8"	58						
* A129	2	#5	STR	10'-2"	21	* S1	106	#4	1	11'-11"	844	A408	2	#5	STR	25'-11"	54						
* A130	2	#5	STR	8'-5"	18	* S2	106	#4	1	11'-4"	802	A409	2	#5	STR	24'-3"	51						
* A131	2	#5	STR	6'-8"	14	U1	106	#4	2	14'-1"	997	A410	2	#5	STR	22'-6"	47						
* A132	2	#5	STR	4'-11"	10	U2	2	#4	2	13'-3"	18	A411	2	#5	STR	20'-9"	43						
* A133	2	#5	STR	3'-2"	7	A412	2	#5	STR	19'-0"	40	A413	2	#5	STR	17'-3"	36						
A201	2	#5	STR	58'-9"	123	A414	2	#5	STR	15'-6"	32	A415	2	#5	STR	13'-10"	29						
A202	2	#5	STR	57'-0"	119	A416	2	#5	STR	12'-1"	25	A417	2	#5	STR	10'-4"	22						
A203	2	#5	STR	55'-3"	115	A418	2	#5	STR	8'-7"	18	A419	2	#5	STR	6'-10"	14						
A204	2	#5	STR	53'-7"	112	A420	2	#5	STR	5'-1"	11	A421	2	#5	STR	3'-5"	7						
A205	2	#5	STR	51'-10"	108	REINFORCING STEEL LBS. 67,765																	
A206	2	#5	STR	50'-1"	104	* EPOXY COATED REINFORCING STEEL LBS. 75,996																	
A207	2	#5	STR	48'-4"	101																		
A208	2	#5	STR	46'-7"	97																		
A209	2	#5	STR	44'-10"	94																		
A210	2	#5	STR	43'-2"	90																		
A211	2	#5	STR	41'-5"	86																		
A212	2	#5	STR	39'-8"	83																		
A213	2	#5	STR	37'-11"	79																		

\* THESE BARS ARE EPOXY COATED.

— SUPERSTRUCTURE BILL OF MATERIAL —			
	CLASS AA CONCRETE (CU. YDS.)	REINFORCING STEEL (LBS.)	* EPOXY COATED REINFORCING STEEL (LBS.)
STAGE I	696.2	67,765	75,996
STAGE II	513.3	48,074	53,370
TOTALS**	1,209.5	115,839	129,366

\*\* QUANTITIES FOR PARAPET, CONCRETE MEDIAN AND SIDEWALK ARE NOT INCLUDED

PROJECT NO. I-5506  
 WAKE COUNTY  
 STATION: 50+61.09 -L-



STATE OF NORTH CAROLINA  
 DEPARTMENT OF TRANSPORTATION  
 RALEIGH  
 SUPERSTRUCTURE  
 BILL OF MATERIAL

REVISIONS						SHEET NO.	
NO.	BY:	DATE:	NO.	BY:	DATE:	SHEET NO.	
1			3			TOTAL SHEETS 46	
2			4				

DRAWN BY: D. HODGE DATE: 8/16  
 CHECKED BY: B.C. HUNT DATE: 9/16

DOCUMENT NOT CONSIDERED FINAL  
 UNLESS ALL SIGNATURES COMPLETED

1223 Jones Franklin Rd.  
 Raleigh, N.C. 27606  
 Bus: 919 851 8077  
 Fax: 919 851 8107  
 LICENSE NO. F-0377

\$ FILE \$  
\$ DATE \$  
\$ TIME \$