

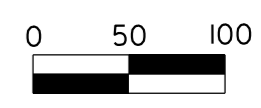
USE FOR LIGHTING CONSTRUCTION ONLY



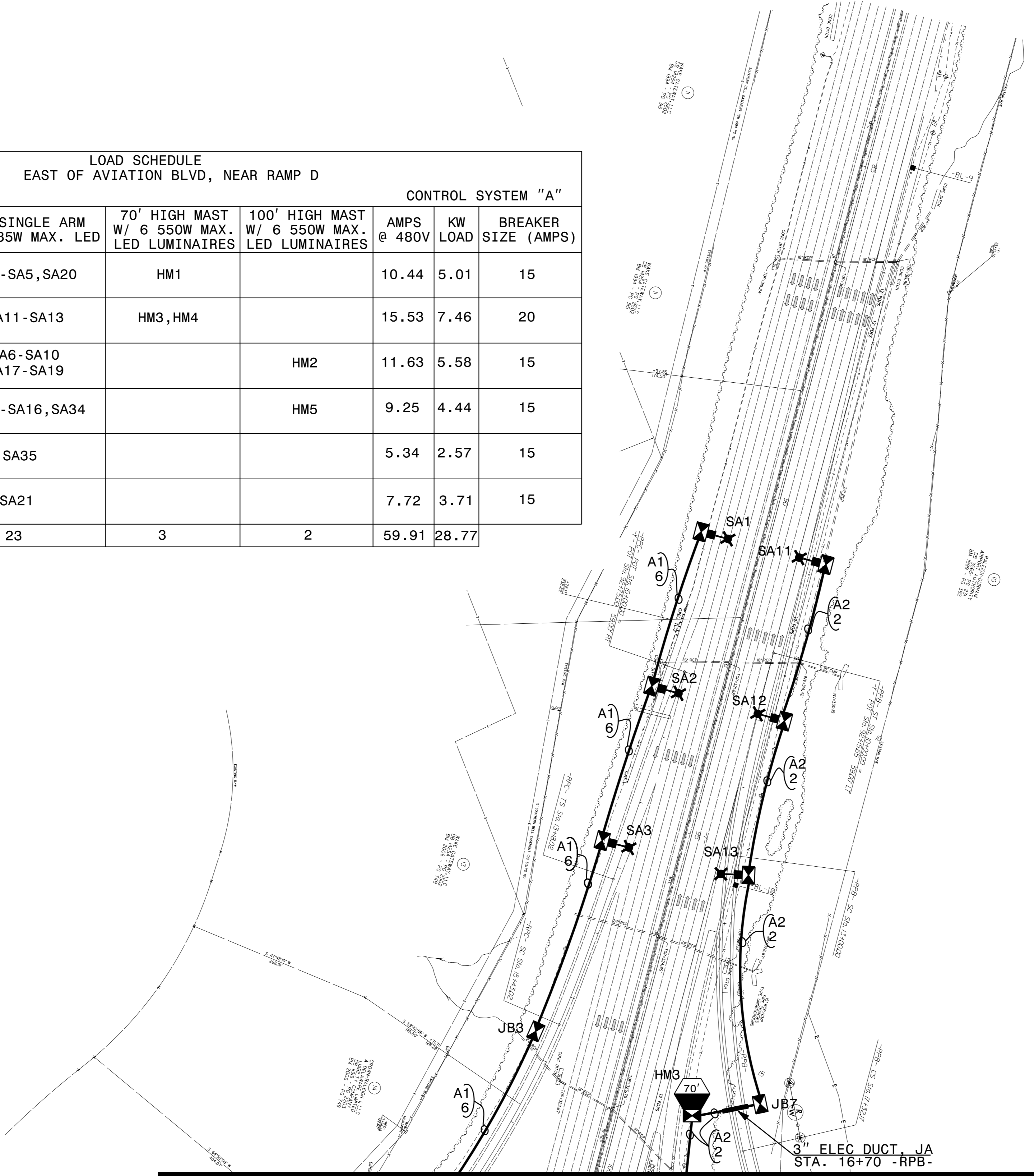
DocuSigned by:
Paul Chan
11/17/2017

**DOCUMENT NOT CONSIDERED FINAL
UNLESS ALL SIGNATURES COMPLETED**

SEE SHEET "E1" FOR
LEGEND & △ NOTES



LOAD SCHEDULE EAST OF AVIATION BLVD, NEAR RAMP D							
1Ø, 3W, 240/480 VAC				CONTROL SYSTEM "A"			
CIRCUIT ID	30' SINGLE ARM 1 @ 285W MAX. LED	45' SINGLE ARM 1 @ 285W MAX. LED	70' HIGH MAST W/ 6 550W MAX. LED LUMINAIRES	100' HIGH MAST W/ 6 550W MAX. LED LUMINAIRES	AMPS @ 480V	KW LOAD	BREAKER SIZE (AMPS)
A1		SA1-SA5, SA20	HM1		10.44	5.01	15
A2		SA11-SA13	HM3, HM4		15.53	7.46	20
A3		SA6-SA10 SA17-SA19		HM2	11.63	5.58	15
A4		SA14-SA16, SA34		HM5	9.25	4.44	15
A5	SA36-SA43	SA35			5.34	2.57	15
A6	SA22-SA33	SA21			7.72	3.71	15
TOTAL	20	23	3	2	59.91	28.77	



MATCHLINE WITH SHEET E3

I7-NOV-2017 10:28
F:\Lighting Design\I5506_1&e_psh_E2.dgn
labr\kwn1 AT RD-293515

2			
1			
Rev.	Date	Description	Approved
NORTH CAROLINA DEPARTMENT OF TRANSPORTATION ROADWAY DESIGN LIGHTING/ELECTRICAL SECTION LIGHTING LAYOUT I-40/AVIATION BLVD. INTERCHANGE WAKE COUNTY			
Drawn By:	AB	Approved By:	Dwg No.: