

**This electronic collection of documents is provided  
for the convenience of the user  
and is Not a Certified Document –**

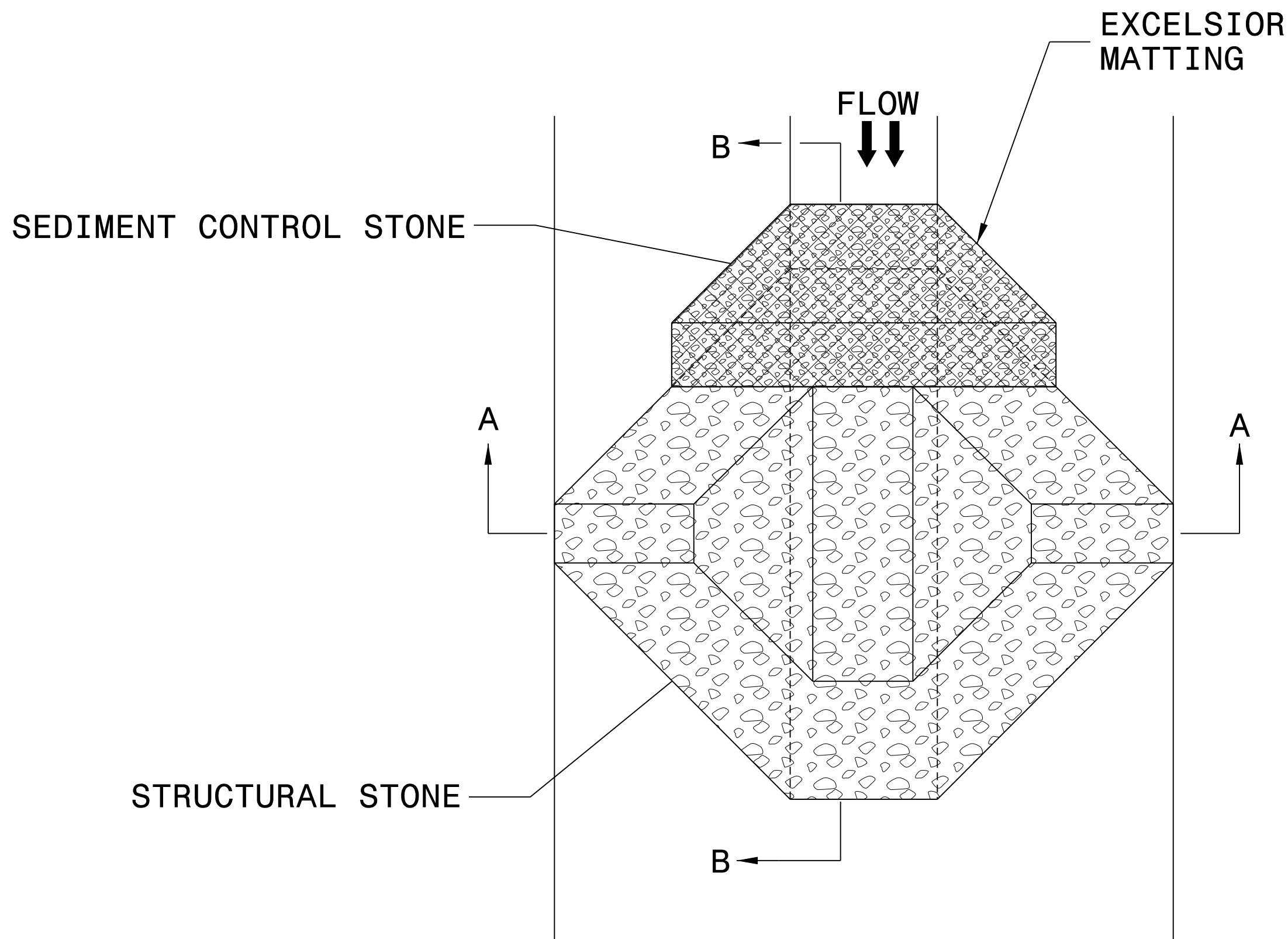
**The documents contained herein were originally issued  
and sealed by the individuals whose names and license  
numbers appear on each page, on the dates appearing  
with their signature on that page.**

**This file or an individual page  
shall not be considered a certified document.**



|                                 |                        |
|---------------------------------|------------------------|
| PROJECT REFERENCE NO.<br>B-5370 | SHEET NO.<br>EC-2      |
| RW SHEET NO.                    |                        |
| ROADWAY DESIGN<br>ENGINEER      | HYDRAULICS<br>ENGINEER |

# TEMPORARY ROCK SILT CHECK TYPE 'A' WITH EXCELSIOR MATTING AND POLYACRYLAMIDE (PAM)



PLAN

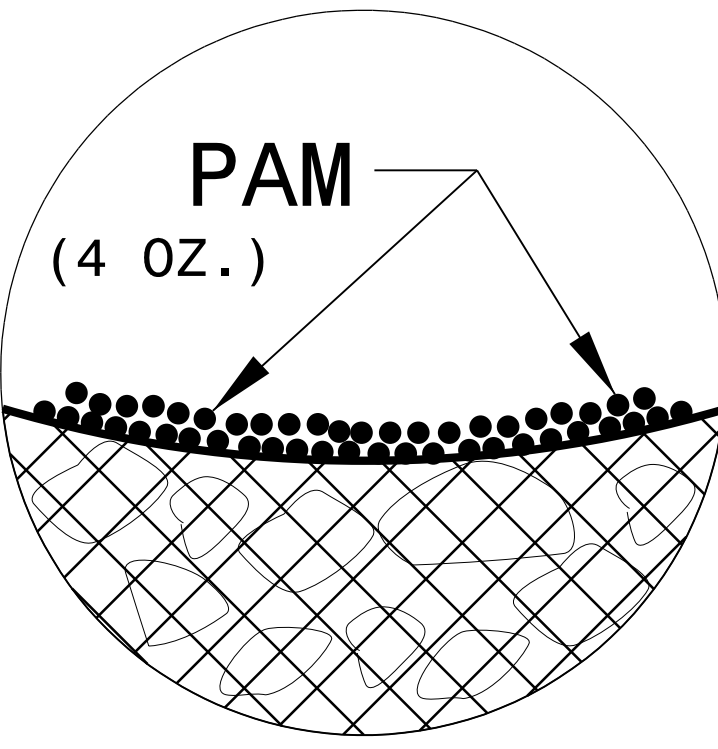
**NOTES:**

INSTALL TEMPORARY ROCK SILT CHECK TYPE A IN ACCORDANCE WITH ROADWAY STANDARD DRAWING NO. 1633.01.

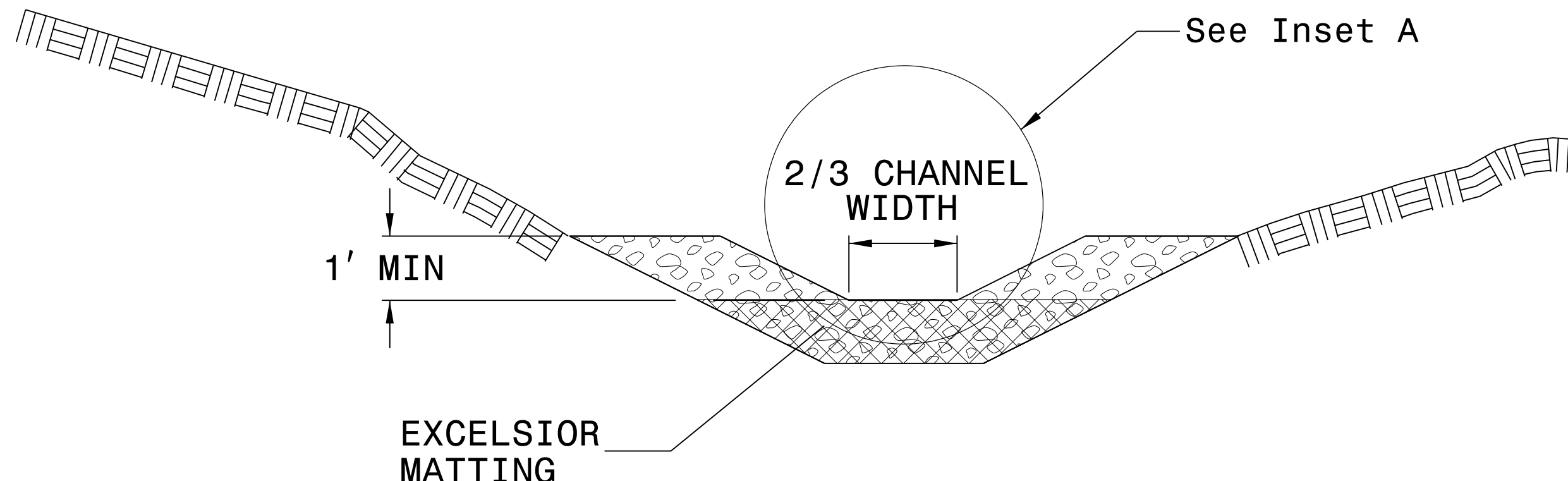
USE EXCELSIOR FOR MATTING MATERIAL AND ANCHOR MATTING SECTION AT TOP AND BOTTOM WITH CLASS B STONE.

PRIOR TO POLYACRYLAMIDE (PAM) APPLICATION, OBTAIN A SOIL SAMPLE FROM PROJECT LOCATION, AND FROM OFFSITE MATERIAL, AND ANALYZE FOR APPROPRIATE PAM FLOCCULANT TO BE APPLIED TO EACH ROCK SILT CHECK.

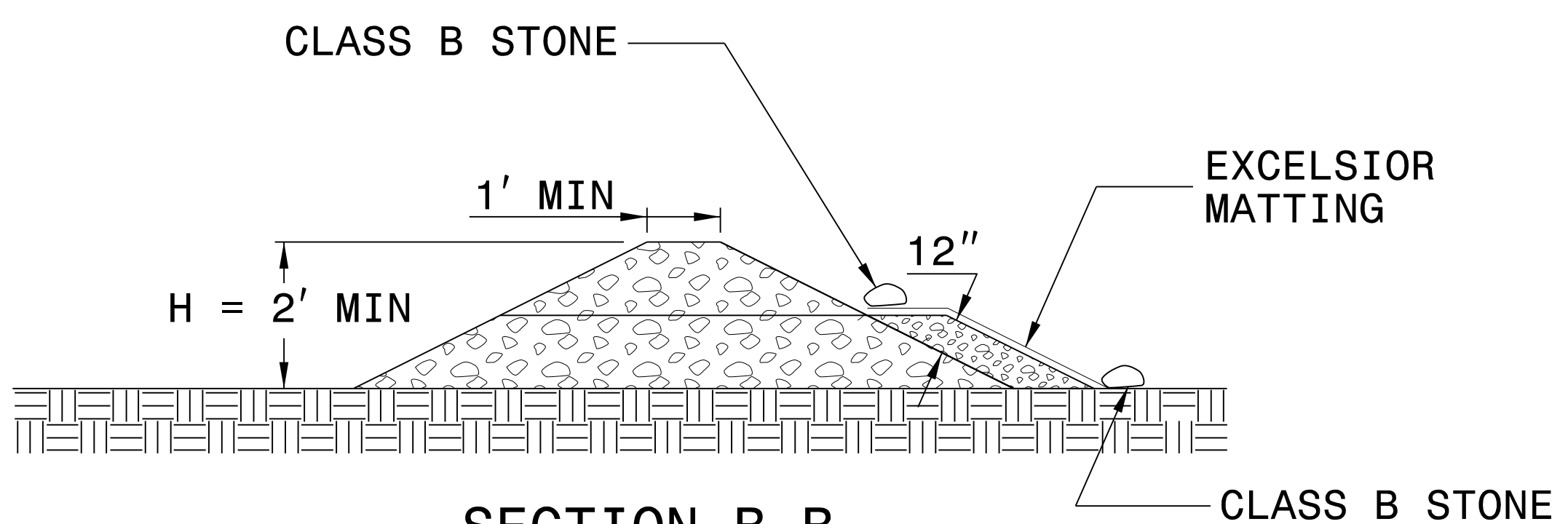
INITIALLY APPLY 4 OUNCES OF POLYACRYLAMIDE (PAM) TO TOP OF MATTING SECTION AND AFTER EVERY RAINFALL EVENT THAT EQUALS OR EXCEEDS 0.50 INCHES.



INSET A



SECTION A-A



SECTION B-B

NOT TO SCALE

DIVISION OF HIGHWAYS  
STATE OF NORTH CAROLINA

|  |                          |
|--|--------------------------|
| PROJECT REFERENCE NO.<br><i>B-5370</i> | SHEET NO.<br><i>EC-3</i> |
| ROADWAY DESIGN<br>ENGINEER             | HYDRAULICS<br>ENGINEER   |

# ***SOIL STABILIZATION TIMEFRAMES***

| <i>SITE DESCRIPTION</i>                      | <i>STABILIZATION TIME</i> | <i>TIMEFRAME EXCEPTIONS</i>  |
|--|---------------------------|--|
| PERIMETER DIKES, SWALES, DITCHES AND SLOPES  | 7 DAYS                    | NONE   |
| HIGH QUALITY WATER (HQW) ZONES               | 7 DAYS                    | NONE   |
| SLOPES STEEPER THAN 3:1                      | 7 DAYS                    | IF SLOPES ARE 10' OR LESS IN LENGTH AND ARE NOT STEEPER THAN 2:1, 14 DAYS ARE ALLOWED. |
| SLOPES 3:1 OR FLATTER                        | 14 DAYS                   | 7 DAYS FOR SLOPES GREATER THAN 50' IN LENGTH.  |
| ALL OTHER AREAS WITH SLOPES FLATTER THAN 4:1 | 14 DAYS                   | NONE, EXCEPT FOR PERIMETERS AND HQW ZONES.   |



# CULVERT CONSTRUCTION SEQUENCE

## STA. 18+16 -L-

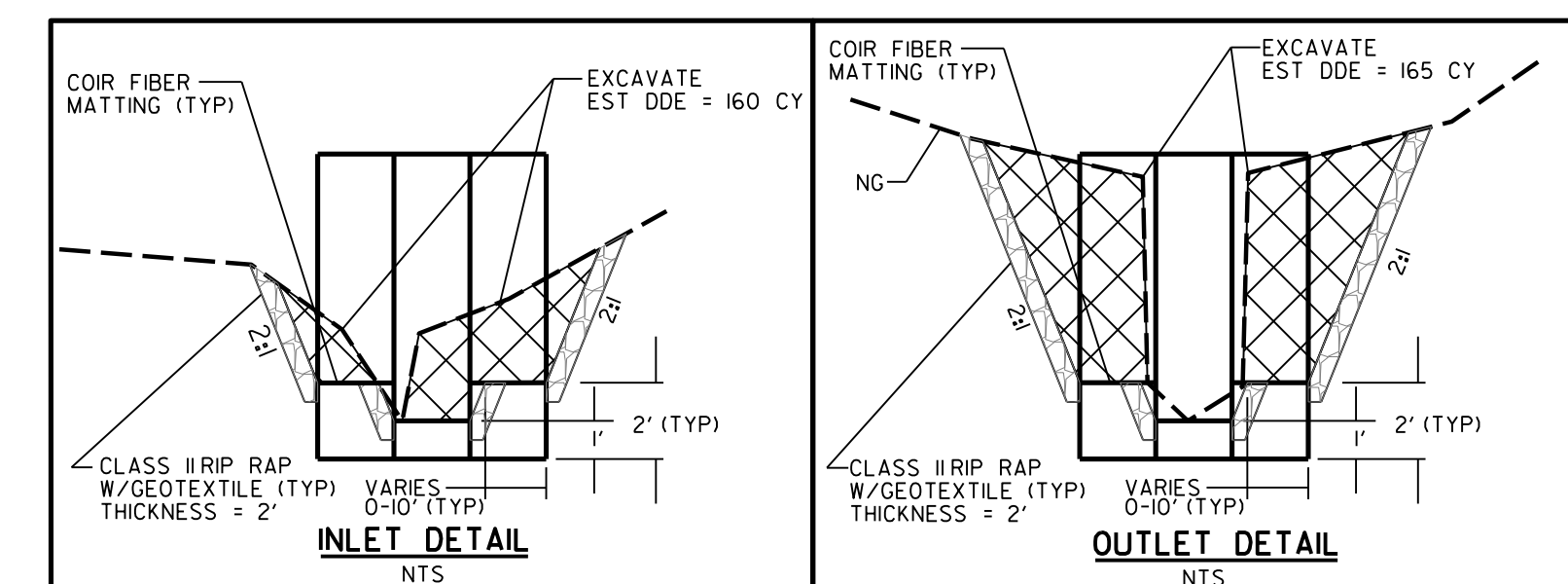
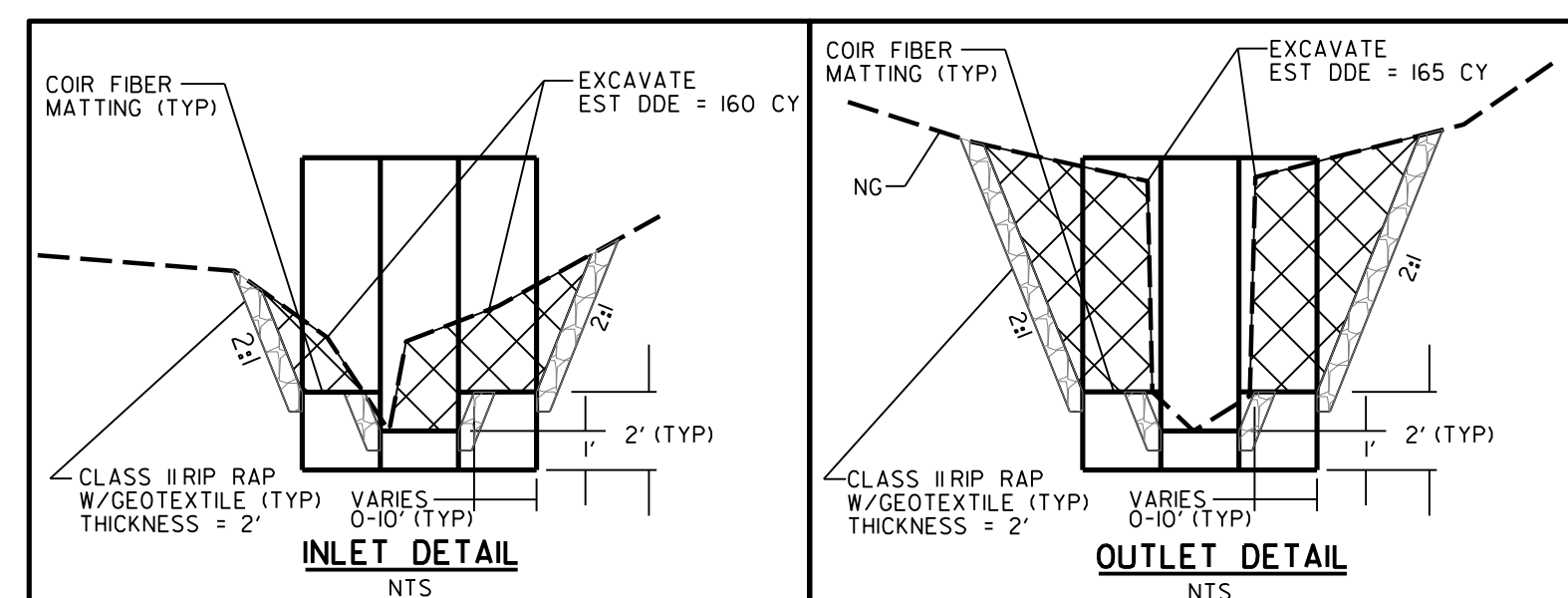
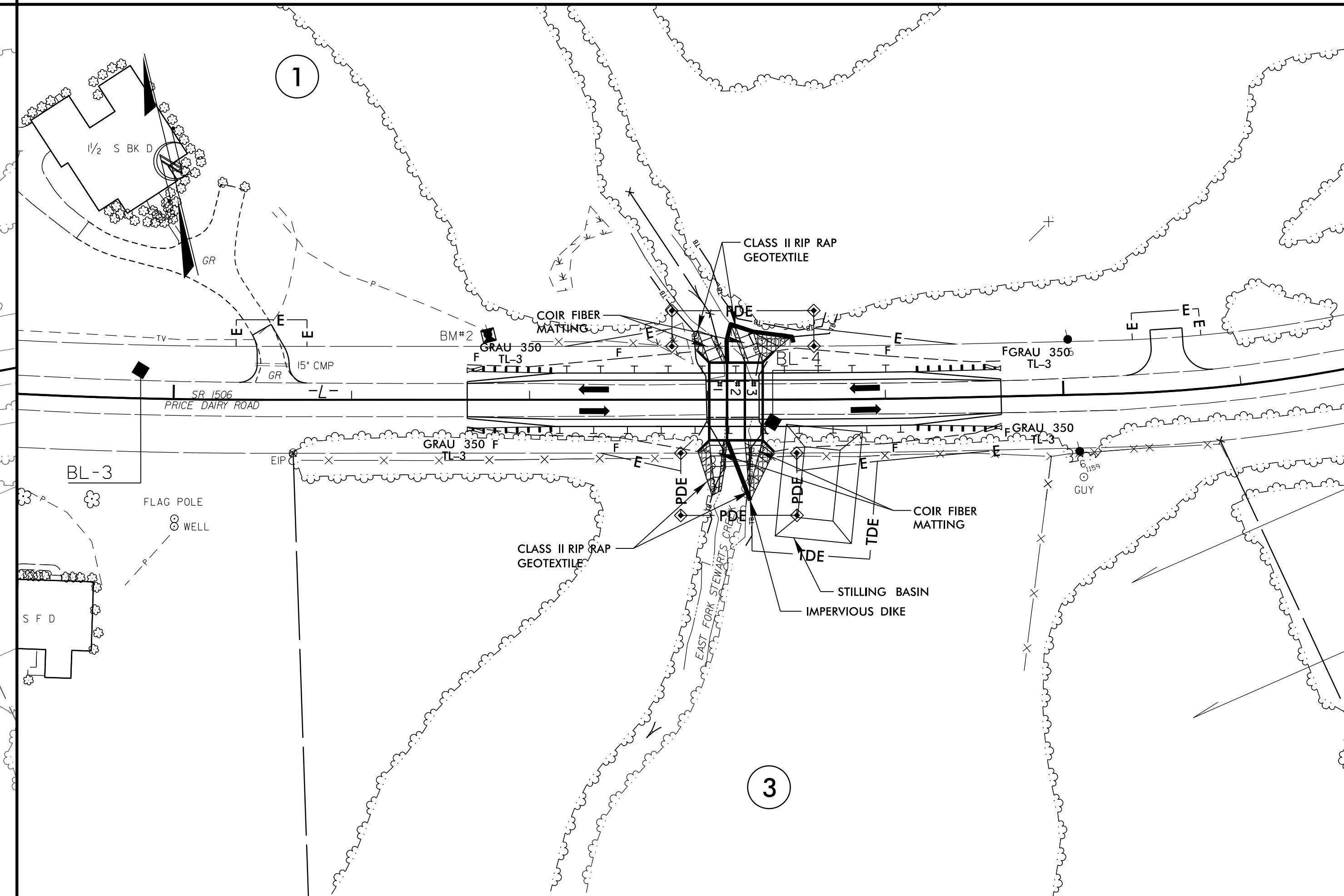
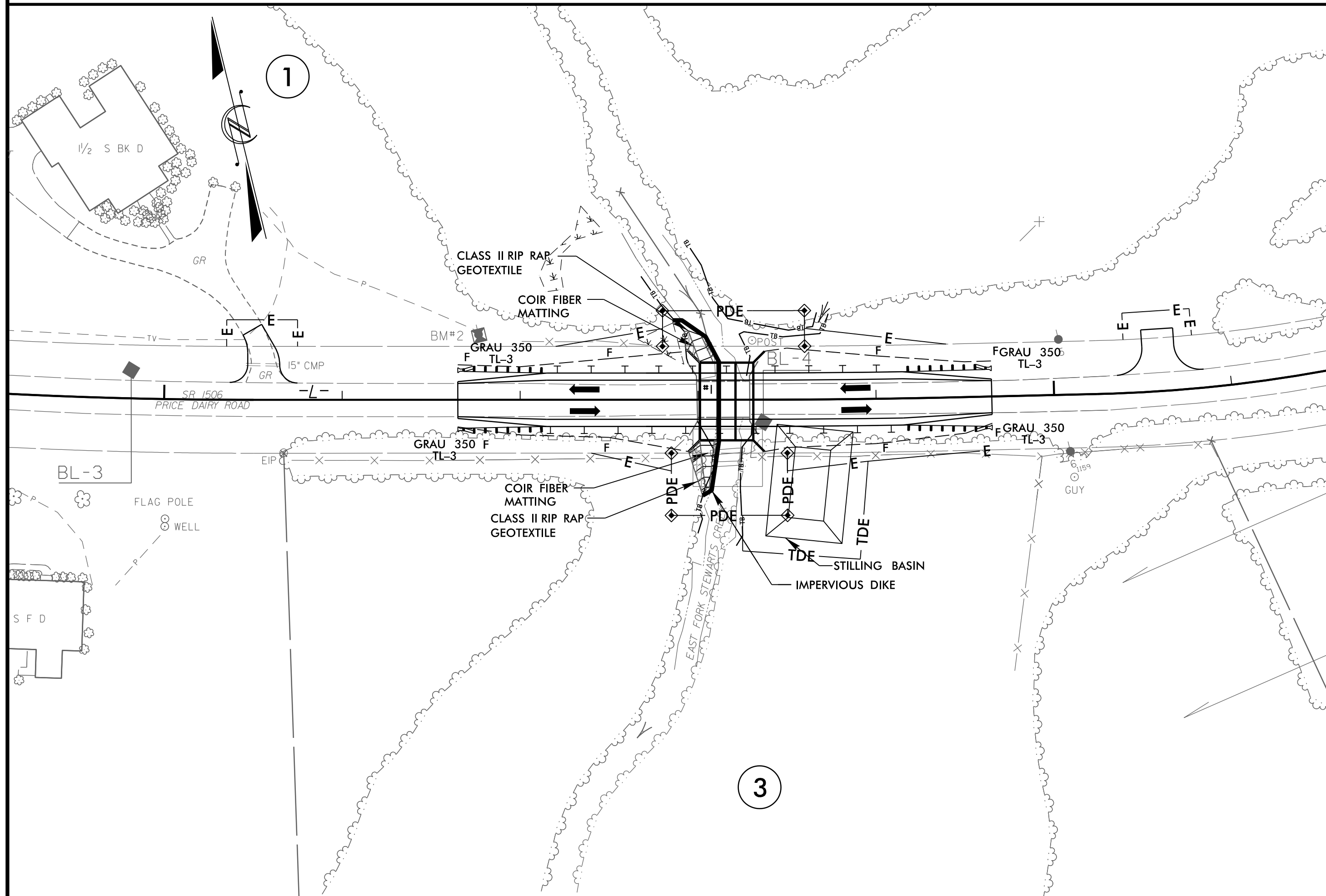
|                                 |                             |
|---------------------------------|-----------------------------|
| PROJECT REFERENCE NO.<br>B-5370 | SHEET NO.<br>EC-05/CONST.04 |
| RW SHEET NO.                    |                             |
| ROADWAY DESIGN ENGINEER         | HYDRAULICS ENGINEER         |

### PHASE I

1. CONSTRUCT STILLING BASIN, MINIMUM VOLUME REQUIRED: 118 CY
2. CONSTRUCT IMPERVIOUS DIKE AND MAINTAIN FLOW THROUGH EXISTING CHANNEL
3. CONSTRUCT BARREL #1 WHILE PUMPING EFFLUENT INTO STILLING BASIN
4. CONSTRUCT WEST BANK INLET AND OUTLET CHANNEL AND STABLIZE
5. REMOVE IMPERVIOUS DIKE
6. START PHASE II

### PHASE II

1. CONSTRUCT IMPERVIOUS DIKE AND DIVERT FLOW THROUGH BARREL #1
2. CONSTRUCT BARREL #2 AND #3 WHILE PUMPING EFFLUENT INTO STILLING BASIN
3. CONSTRUCT EAST BANK INLET AND OUTLET CHANNEL AND STABLIZE
4. REMOVE IMPERVIOUS DIKE
5. COMPLETE ROADWAY



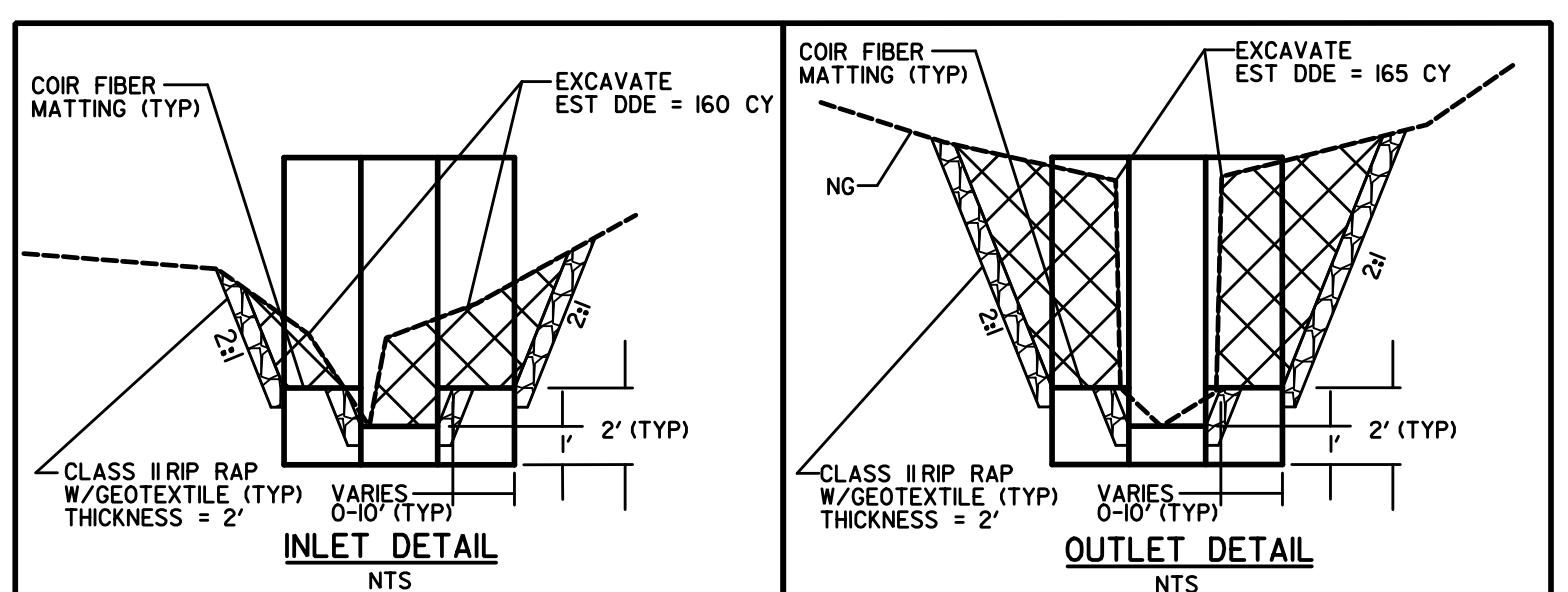
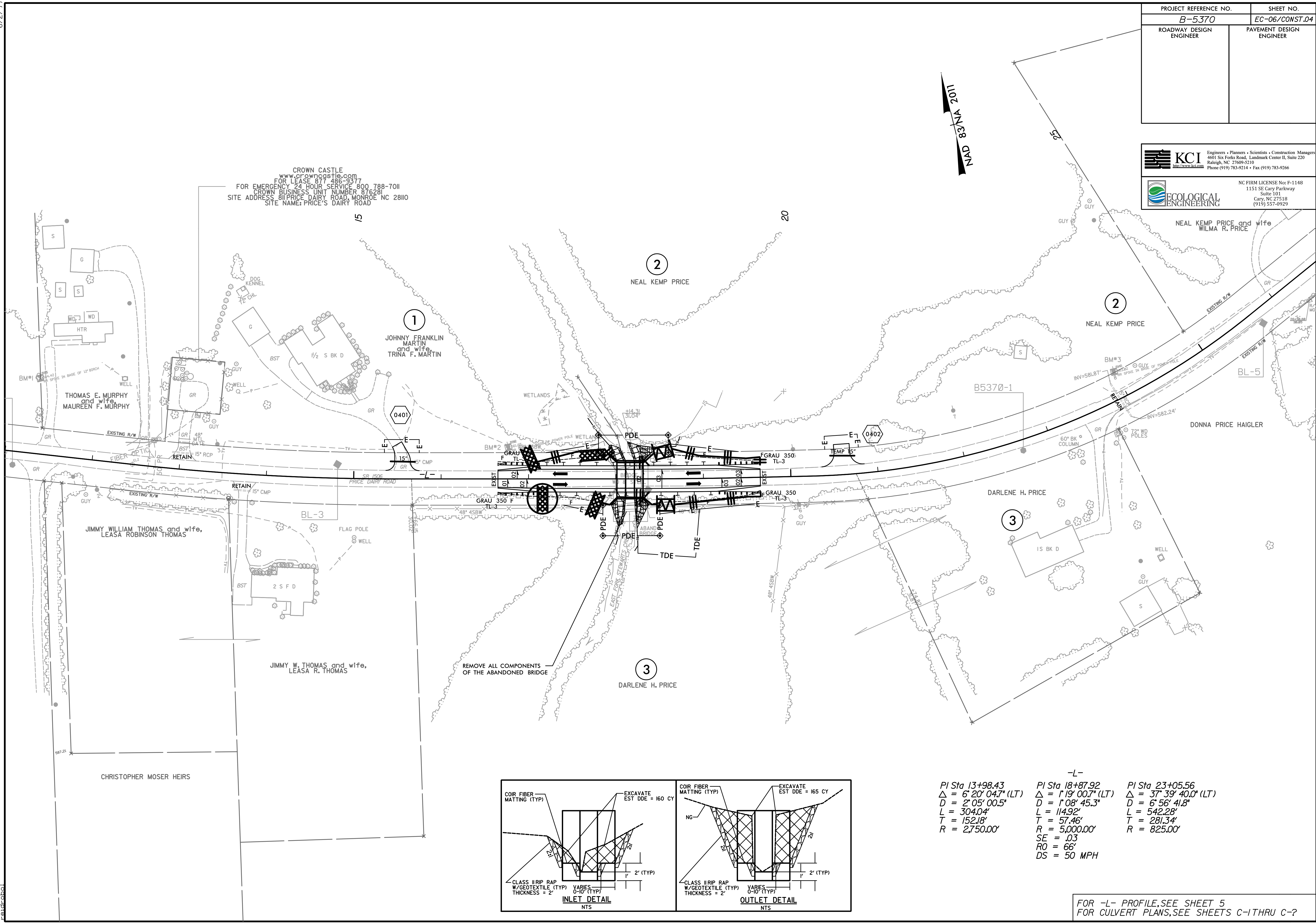
6/2/99

|  |                                    |
|--|------------------------------------|
| PROJECT REFERENCE NO.<br><b>B-5370</b> | SHEET NO.<br><b>EC-06/CONST.04</b> |
| ROADWAY DESIGN ENGINEER                | PAVEMENT DESIGN ENGINEER           |

**KCI** Engineers • Planners • Scientists • Construction Managers  
4601 Six Forks Road, Landmark Center II, Suite 220  
Raleigh, NC 27609-5210  
Phone (919) 783-9214 • Fax (919) 783-9266

**ECOLOGICAL ENGINEERING**  
NC FIRM LICENSE No: F-1148  
1151 SE Cary Parkway  
Suite 101  
Cary, NC 27518  
(919) 557-0929

CROWN CASTLE  
www.crowncastle.com  
FOR LEASE 877 486-9377  
FOR EMERGENCY 24 HOUR SERVICE 800 788-7011  
CROWN BUSINESS UNIT NUMBER 876281  
SITE ADDRESS: 811 PRICE DAIRY ROAD, MONROE NC 28110  
SITE NAME: PRICE'S DAIRY ROAD



| -L-                           |                               |                                |
|-------------------------------|-------------------------------|--------------------------------|
| PI Sta 13+98.43               | PI Sta 18+87.92               | PI Sta 23+05.56                |
| $\Delta = 6' 20' 04.7''$ (LT) | $\Delta = 1' 19' 00.7''$ (LT) | $\Delta = 37' 39' 40.0''$ (LT) |
| D = 2' 05' 00.5"              | D = 1' 08' 45.3"              | D = 6' 56' 41.8"               |
| L = 304.04'                   | L = 114.92'                   | L = 542.28'                    |
| T = 152.18'                   | T = 57.46'                    | T = 281.34'                    |
| R = 2,750.00'                 | R = 5,000.00'                 | R = 825.00'                    |
|                               | SE = .03                      |                                |
|                               | RO = 66'                      |                                |
|                               | DS = 50 MPH                   |                                |

FOR -L- PROFILE, SEE SHEET 5  
FOR CULVERT PLANS, SEE SHEETS C-1 THRU C-?

K:\Projects\Commentary\Design\B5370-REU\EC\_PSH04\_FINAL.dgn