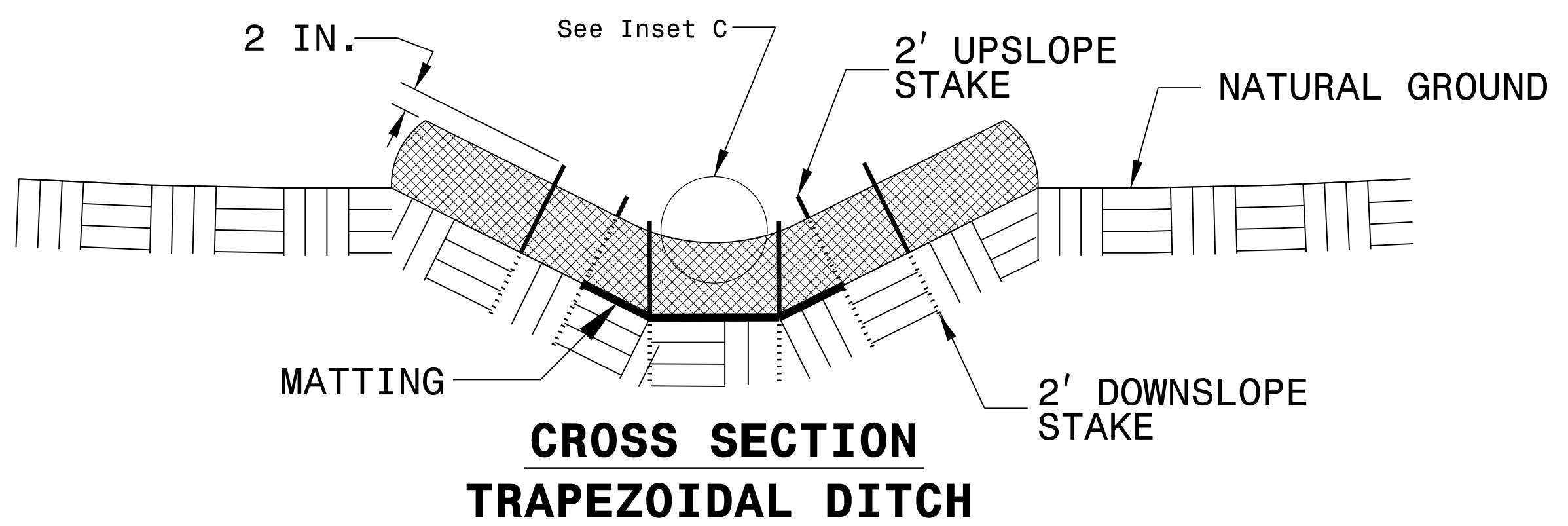
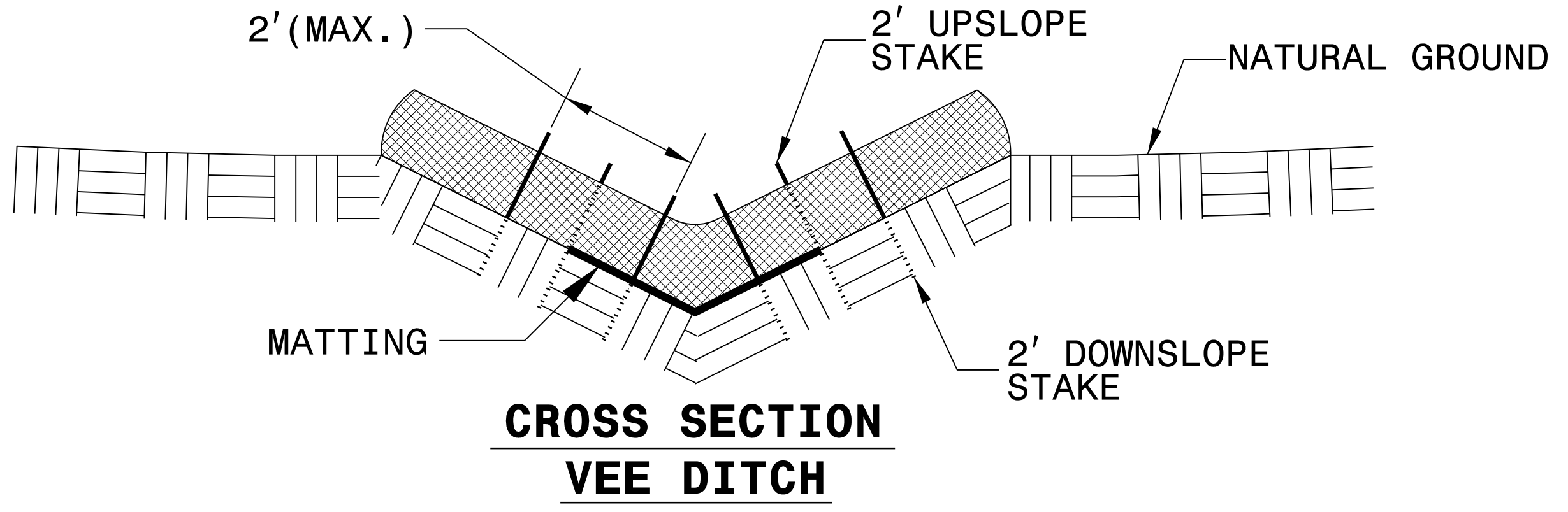
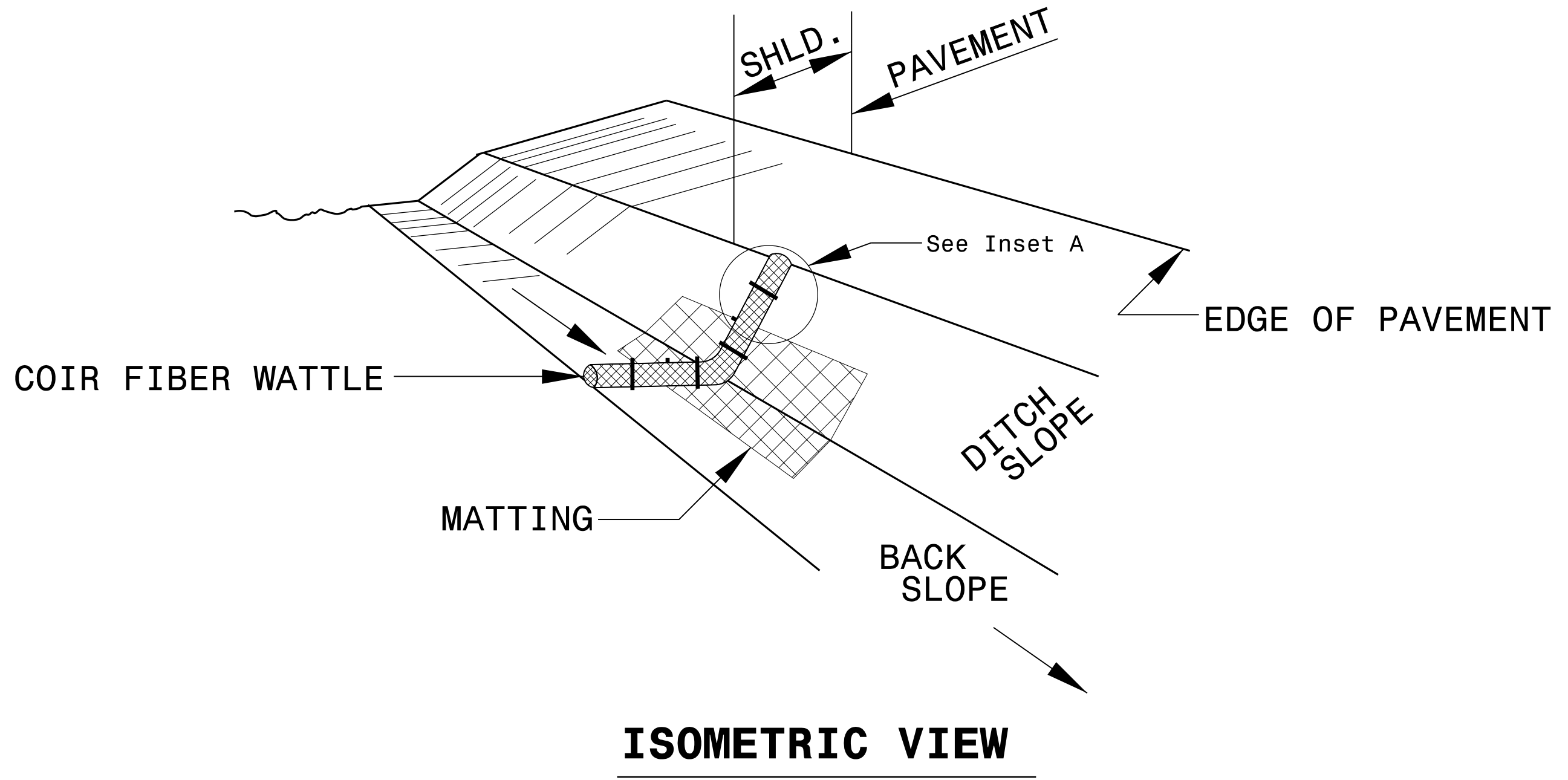


**This electronic collection of documents is provided
for the convenience of the user
and is Not a Certified Document –**

**The documents contained herein were originally issued
and sealed by the individuals whose names and license
numbers appear on each page, on the dates appearing
with their signature on that page.**

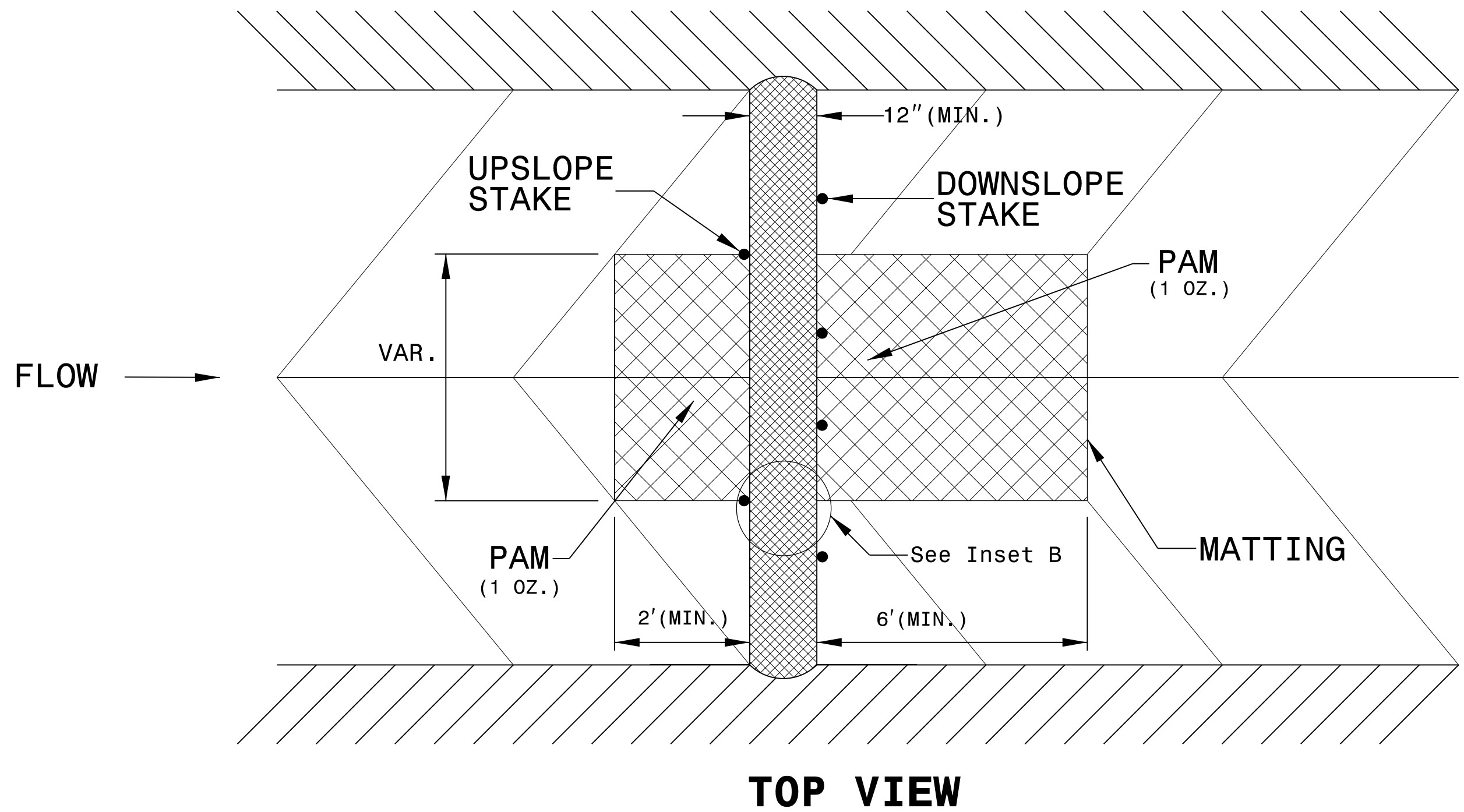
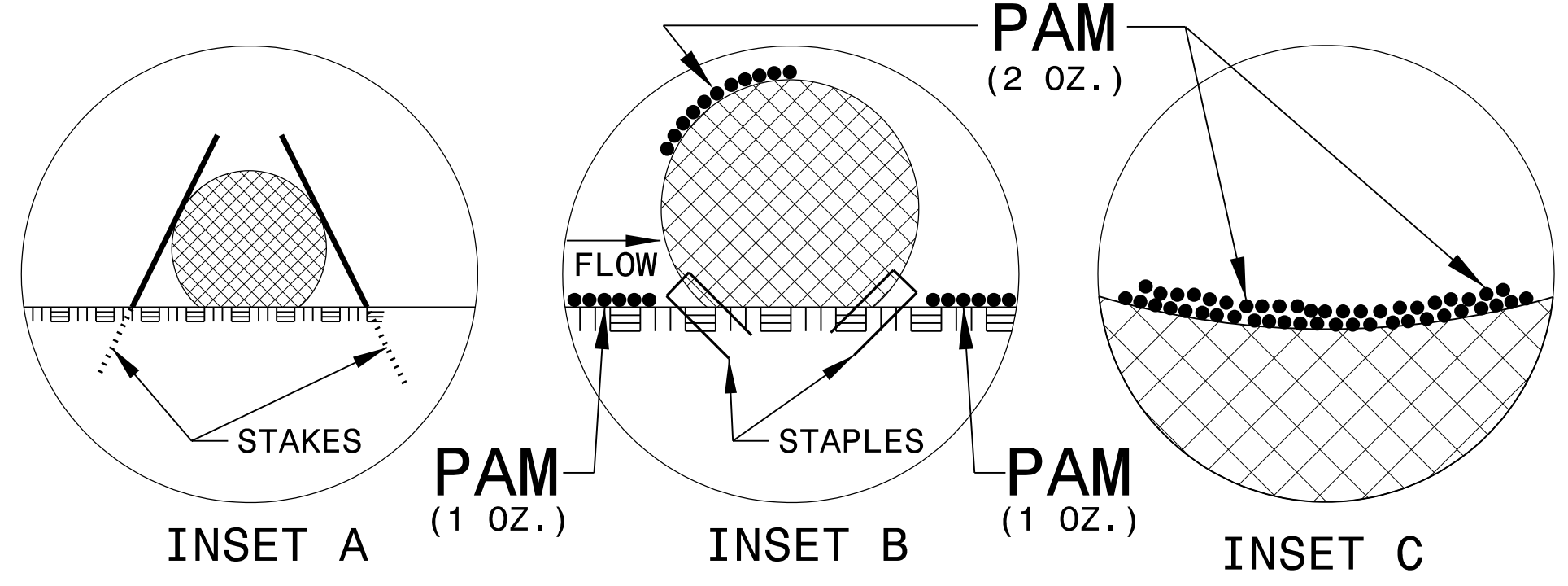
**This file or an individual page
shall not be considered a certified document.**

COIR FIBER WATTLE WITH POLYACRYLAMIDE (PAM) DETAIL

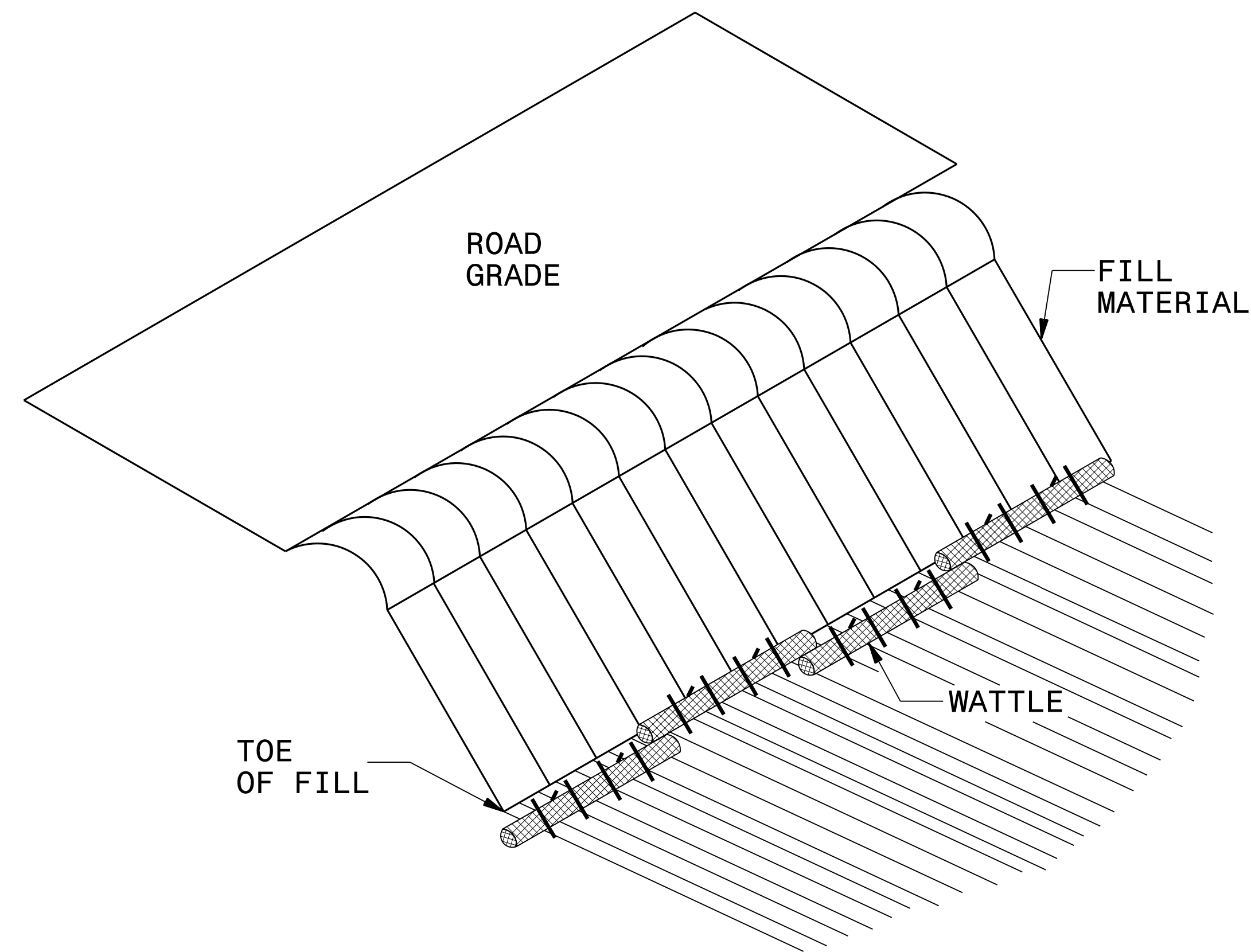


NOTES:

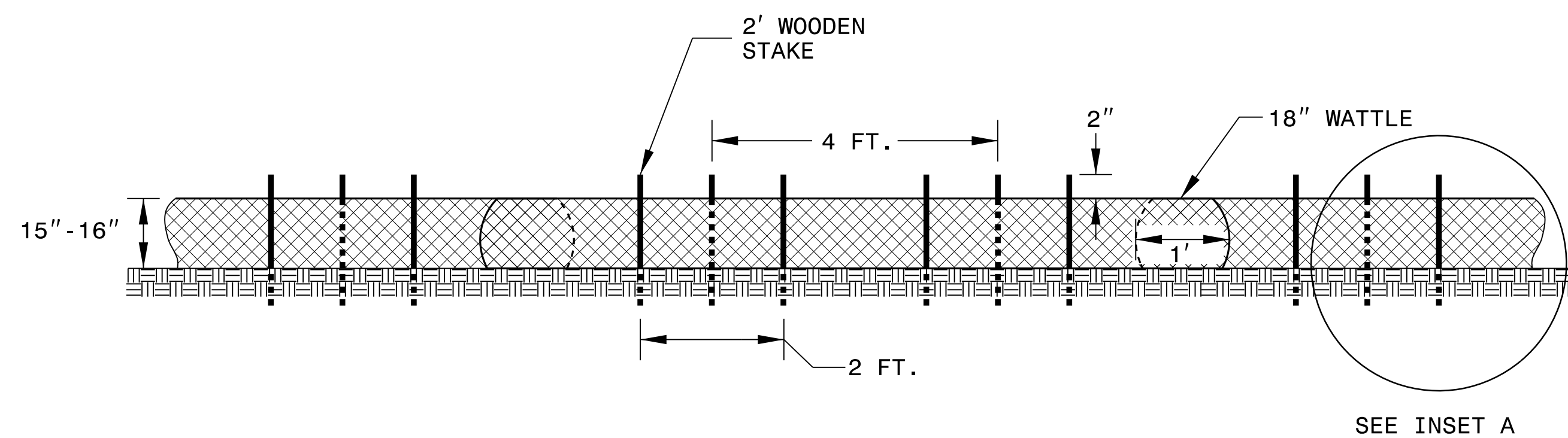
- USE MINIMUM 12 IN. DIAMETER COIR FIBER (COCONUT FIBER) WATTLE.
- USE 2 FT. WOODEN STAKES WITH A 2 IN. BY 2 IN. NOMINAL CROSS SECTION.
- ONLY INSTALL WATTLE(S) TO A HEIGHT IN DITCH SO FLOW WILL NOT WASH AROUND WATTLE AND SCOUR DITCH SLOPES AND AS DIRECTED.
- INSTALL A MINIMUM OF 2 UPSLOPE STAKES AND 4 DOWNSLOPE STAKES AT AN ANGLE TO WEDGE WATTLE TO BOTTOM OF DITCH.
- PROVIDE STAPLES MADE OF 0.125 IN. DIAMETER STEEL WIRE FORMED INTO A U SHAPE NOT LESS THAN 12" IN LENGTH.
- INSTALL STAPLES APPROXIMATELY EVERY 1 LINEAR FOOT ON BOTH SIDES OF WATTLE AND AT EACH END TO SECURE IT TO THE SOIL.
- INSTALL MATTING IN ACCORDANCE WITH SECTION 1631 OF THE STANDARD SPECIFICATIONS.
- PRIOR TO POLYACRYLAMIDE (PAM) APPLICATION, OBTAIN A SOIL SAMPLE FROM PROJECT LOCATION, AND FROM OFFSITE MATERIAL, AND ANALYZE FOR APPROPRIATE PAM FLOCCULANT TO BE APPLIED TO EACH WATTLE.
- INITIALLY APPLY 2 OUNCES OF ANIONIC OR NEUTRALLY CHARGED PAM OVER WATTLE WHERE WATER WILL FLOW AND 1 OUNCE OF PAM ON EACH SIDE OF WATTLE. REAPPLY PAM AFTER EVERY RAINFALL EVENT THAT IS EQUAL TO OR EXCEEDS 0.50 IN.



COIR FIBER WATTLE BARRIER DETAIL



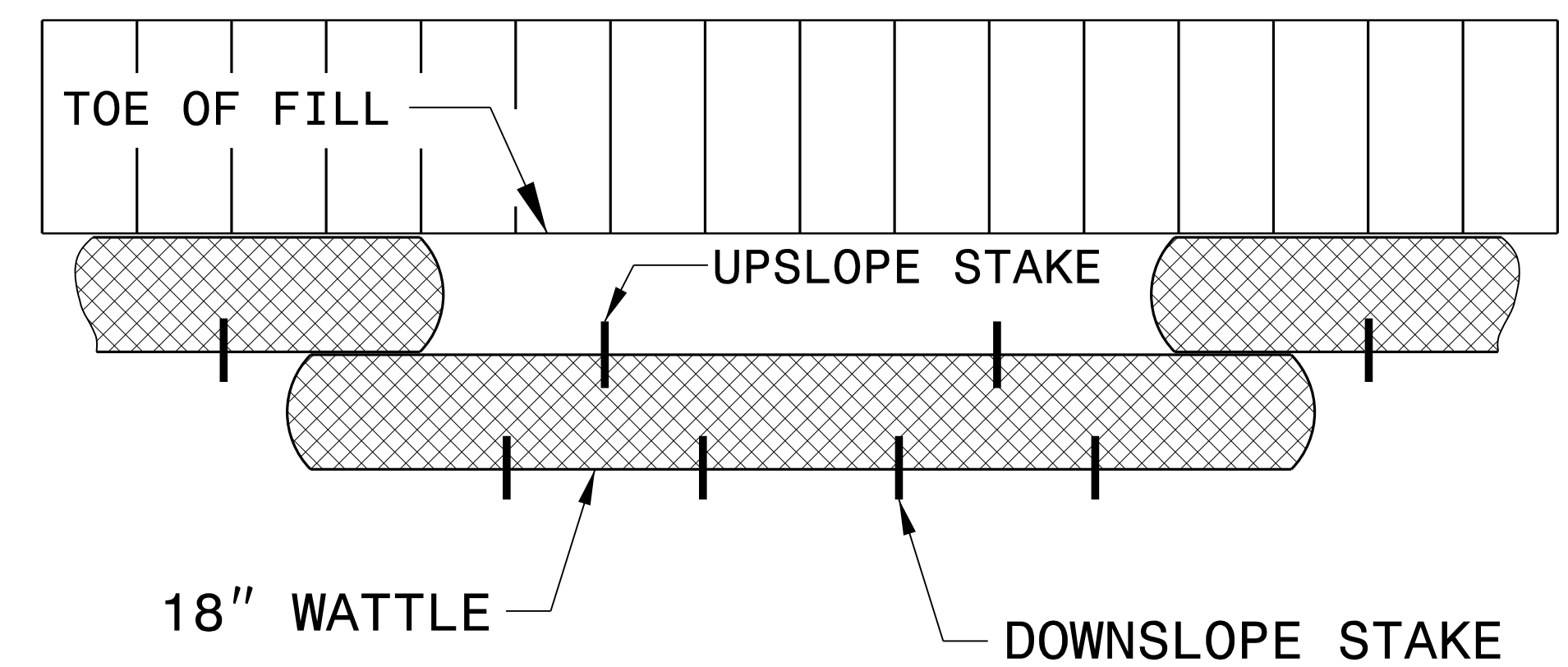
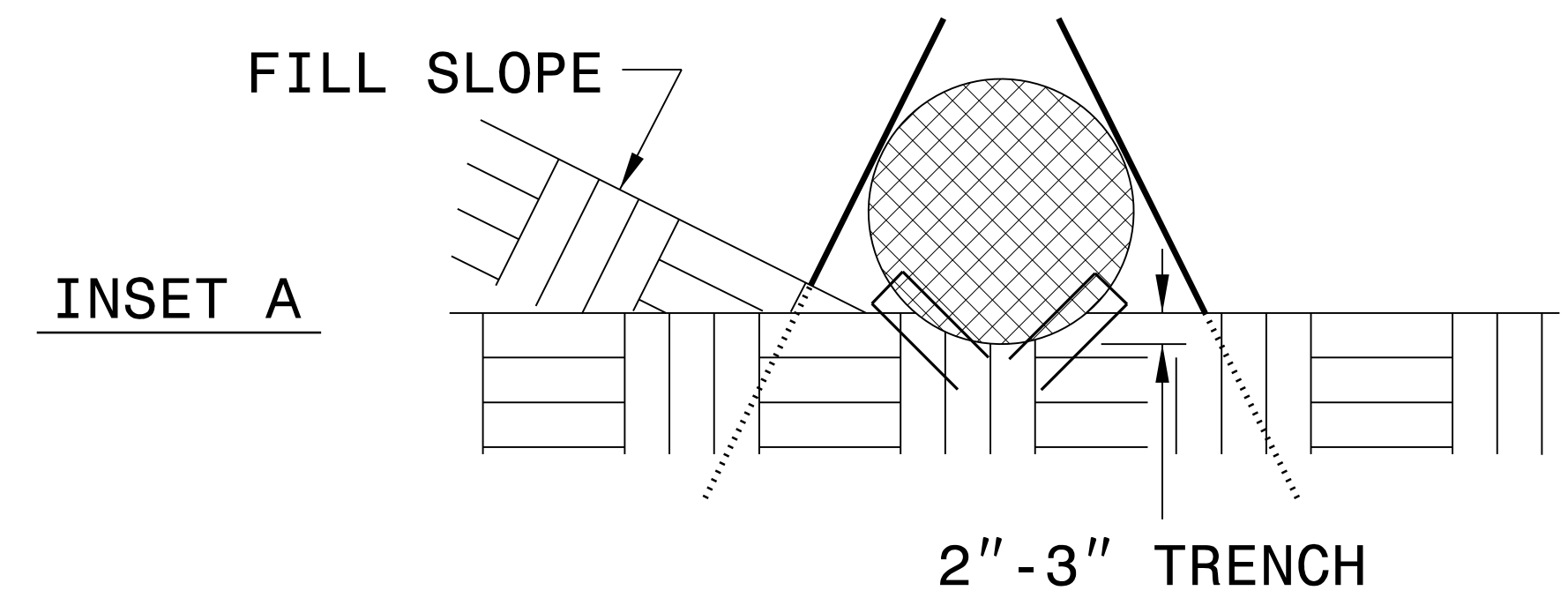
ISOMETRIC VIEW



FRONT VIEW

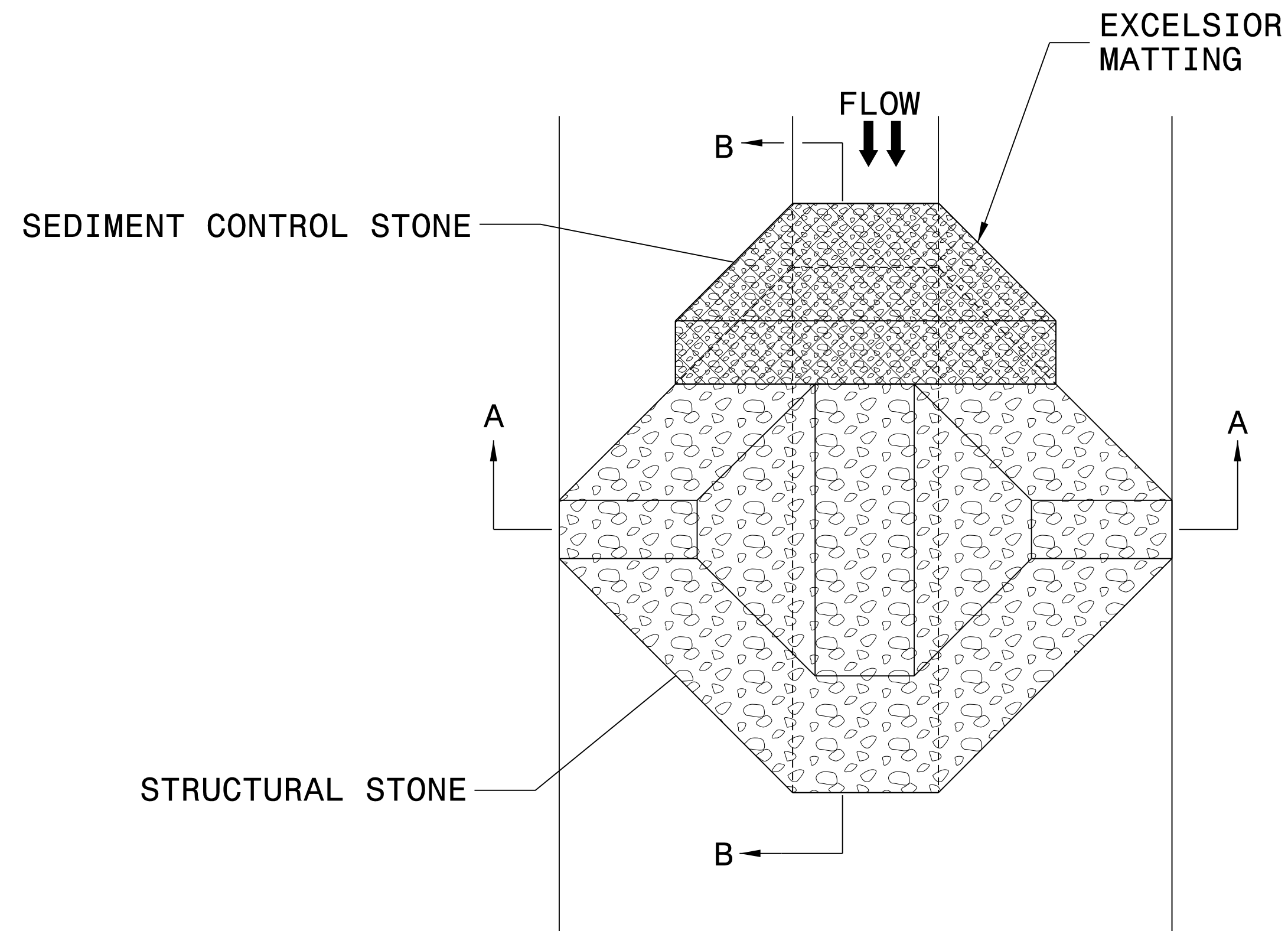
NOTES:

- USE MINIMUM 18 IN. NOMINAL DIAMETER COIR FIBER (COCONUT) WATTLE AND LENGTH OF 10 FT.
- EXCAVATE A 2 TO 3 INCH TRENCH FOR WATTLE TO BE PLACED.
- DO NOT PLACE WATTLES ON TOE OF SLOPE.
- USE 2 FT. WOODEN STAKES WITH A 2 IN. BY 2 IN. NOMINAL CROSS SECTION.
- INSTALL A MINIMUM OF 2 UPSLOPE STAKES AND 4 DOWNSLOPE STAKES AT AN ANGLE TO WEDGE WATTLE TO GROUND.
- PROVIDE STAPLES MADE OF 0.125 IN. DIAMETER STEEL WIRE FORMED INTO A U SHAPE NOT LESS THAN 12" IN LENGTH.
- INSTALL STAPLES APPROXIMATELY EVERY 1 LINEAR FOOT ON BOTH SIDES OF WATTLE AND AT EACH END TO SECURE IT TO THE SOIL.
- FOR BREAKS ALONG LARGE SLOPES, USE MAXIMUM SPACING OF 25 FT.



TOP VIEW

TEMPORARY ROCK SILT CHECK TYPE 'A' WITH EXCELSIOR MATTING AND POLYACRYLAMIDE (PAM)



PLAN

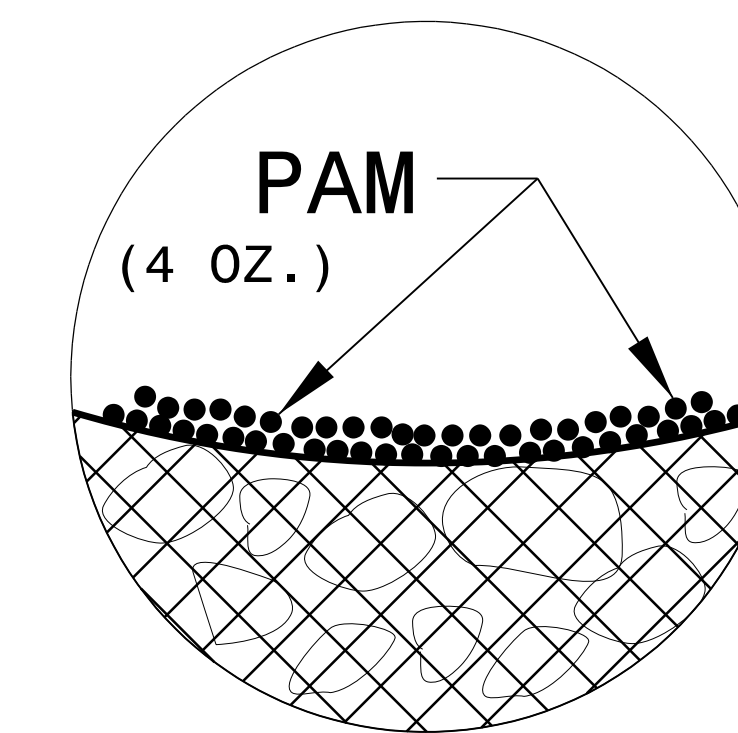
NOTES:

INSTALL TEMPORARY ROCK SILT CHECK TYPE A IN ACCORDANCE WITH ROADWAY STANDARD DRAWING NO. 1633.01.

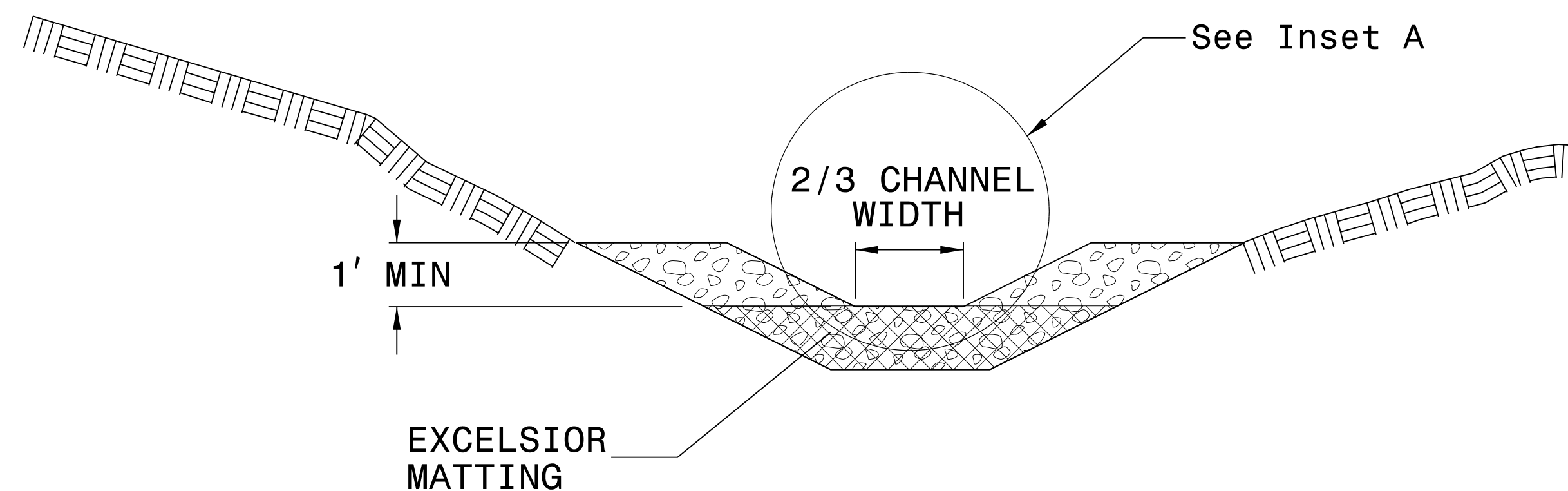
USE EXCELSIOR FOR MATTING MATERIAL AND ANCHOR MATTING SECTION AT TOP AND BOTTOM WITH CLASS B STONE.

PRIOR TO POLYACRYLAMIDE (PAM) APPLICATION, OBTAIN A SOIL SAMPLE FROM PROJECT LOCATION, AND FROM OFFSITE MATERIAL, AND ANALYZE FOR APPROPRIATE PAM FLOCCULANT TO BE APPLIED TO EACH ROCK SILT CHECK.

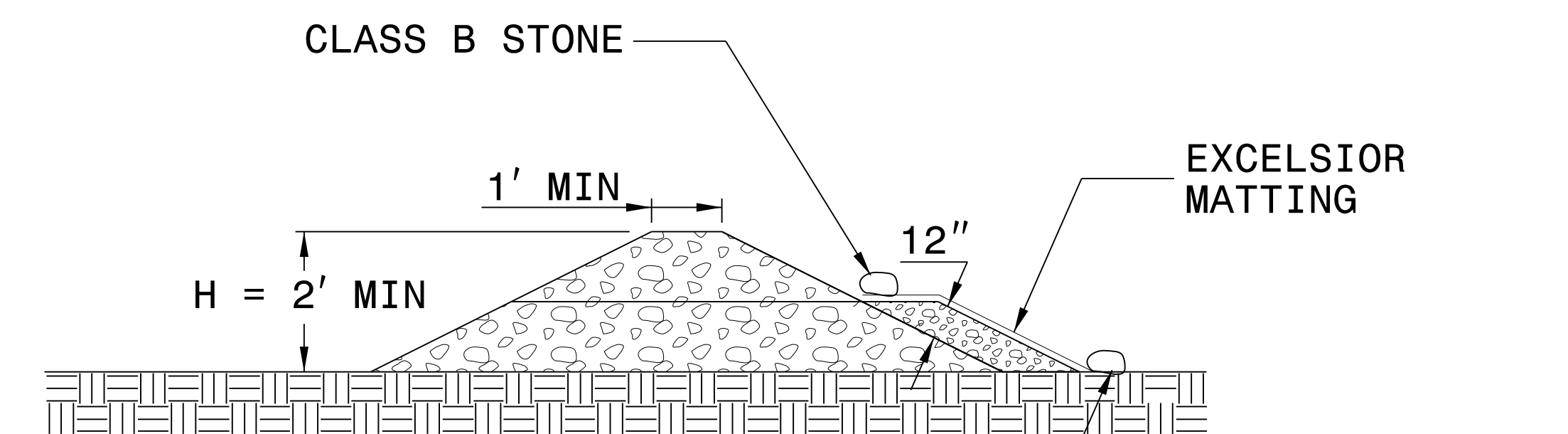
INITIALLY APPLY 4 OUNCES OF POLYACRYLAMIDE (PAM) TO TOP OF MATTING SECTION AND AFTER EVERY RAINFALL EVENT THAT EQUALS OR EXCEEDS 0.50 INCHES.



INSET A



SECTION A-A



SECTION B-B

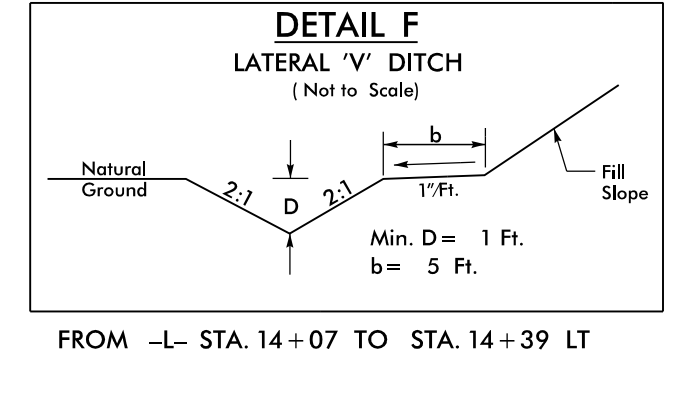
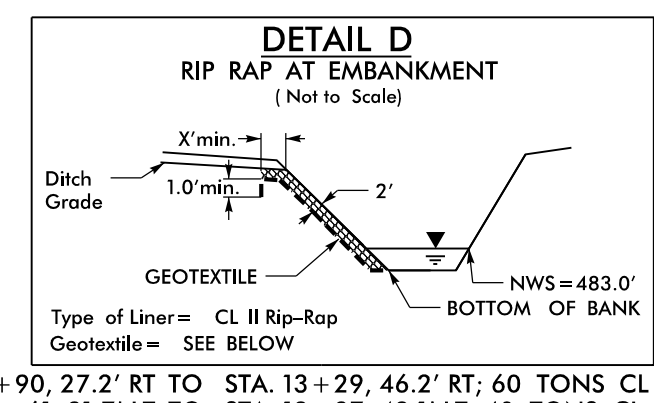
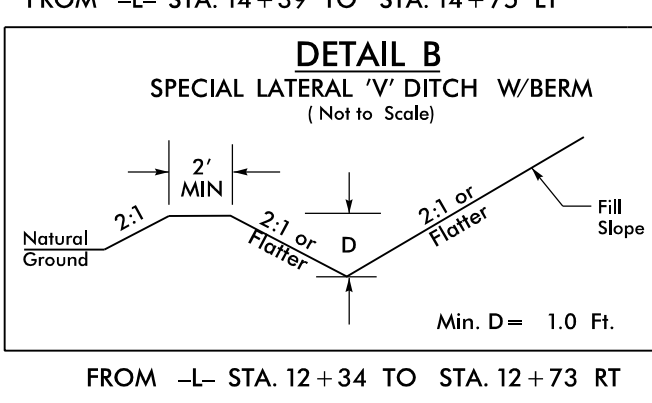
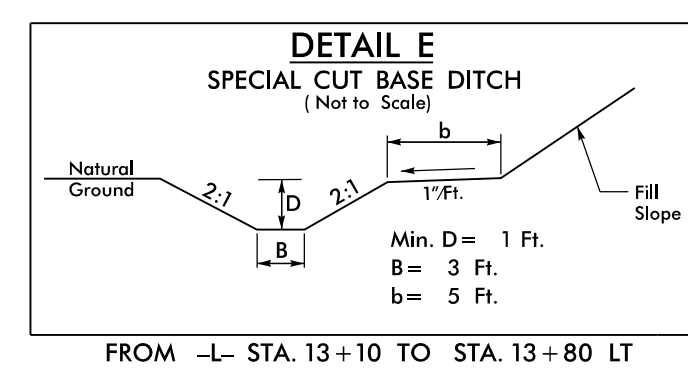
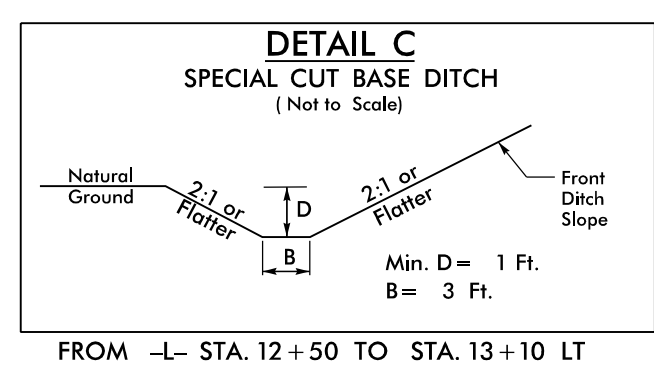
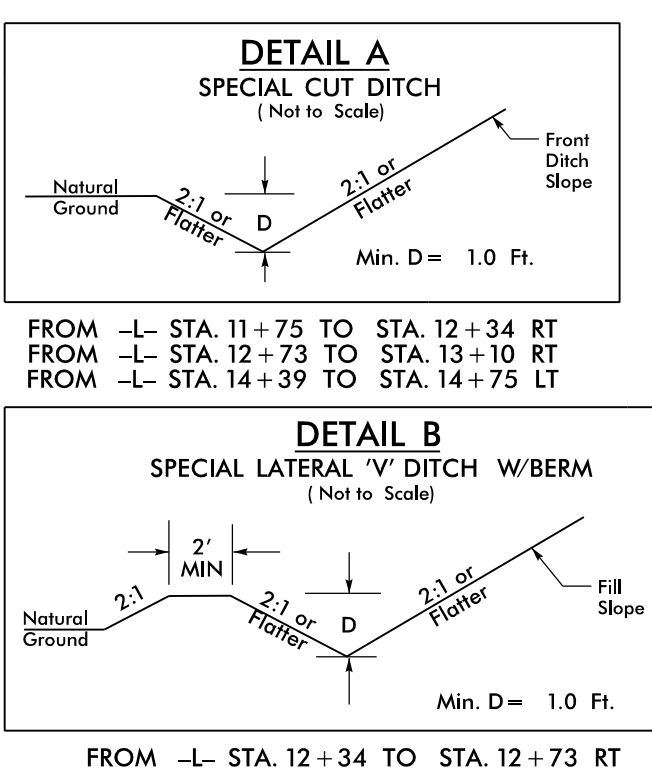
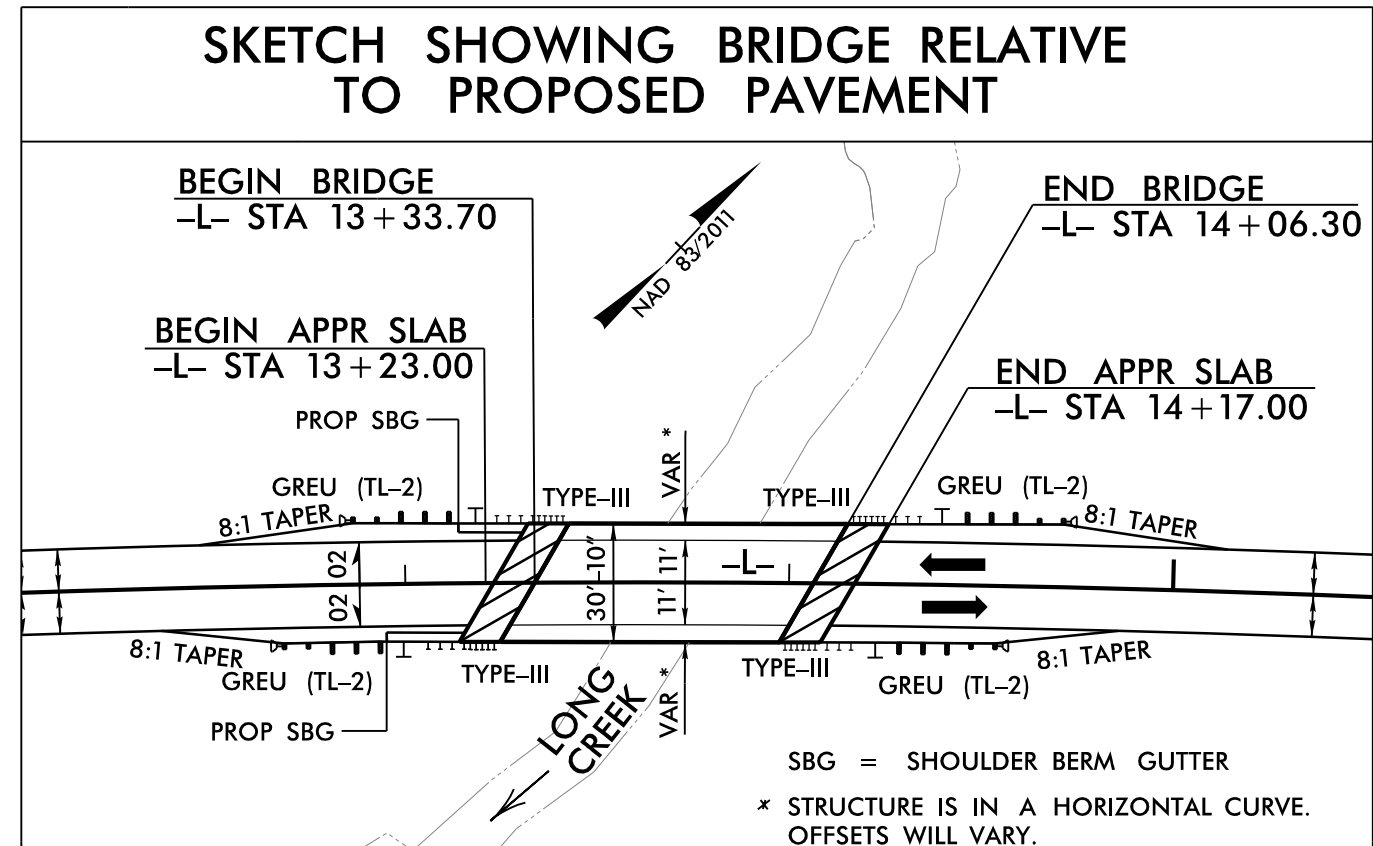
NOT TO SCALE

DIVISION OF HIGHWAYS
STATE OF NORTH CAROLINA

SOIL STABILIZATION TIMEFRAMES

<i>SITE DESCRIPTION</i>	<i>STABILIZATION TIME</i>	<i>TIMEFRAME EXCEPTIONS</i>
PERIMETER DIKES, SWALES, DITCHES AND SLOPES	7 DAYS	NONE
HIGH QUALITY WATER (HQW) ZONES	7 DAYS	NONE
SLOPES STEEPER THAN 3:1	7 DAYS	IF SLOPES ARE 10' OR LESS IN LENGTH AND ARE NOT STEEPER THAN 2:1, 14 DAYS ARE ALLOWED.
SLOPES 3:1 OR FLATTER	14 DAYS	7 DAYS FOR SLOPES GREATER THAN 50' IN LENGTH.
ALL OTHER AREAS WITH SLOPES FLATTER THAN 4:1	14 DAYS	NONE, EXCEPT FOR PERIMETERS AND HQW ZONES.

**CLEARING AND GRUBBING
EROSION CONTROL FOR
CONSTRUCTION SHEET 4**

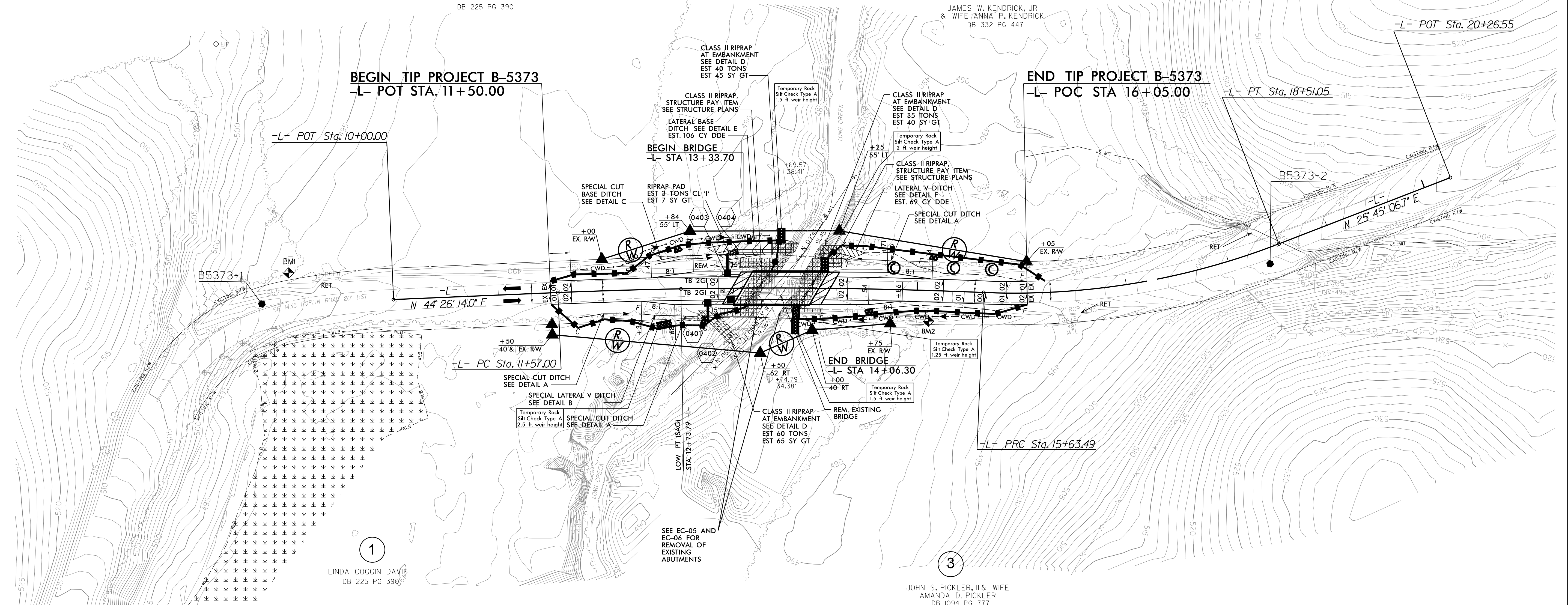


2

LINDA COGGIN DAVIS
DB 225 PG 390

4

JAMES W. KENDRICK, JR
& WIFE / ANNA P. KENDRICK
DB 332 PG 447



1

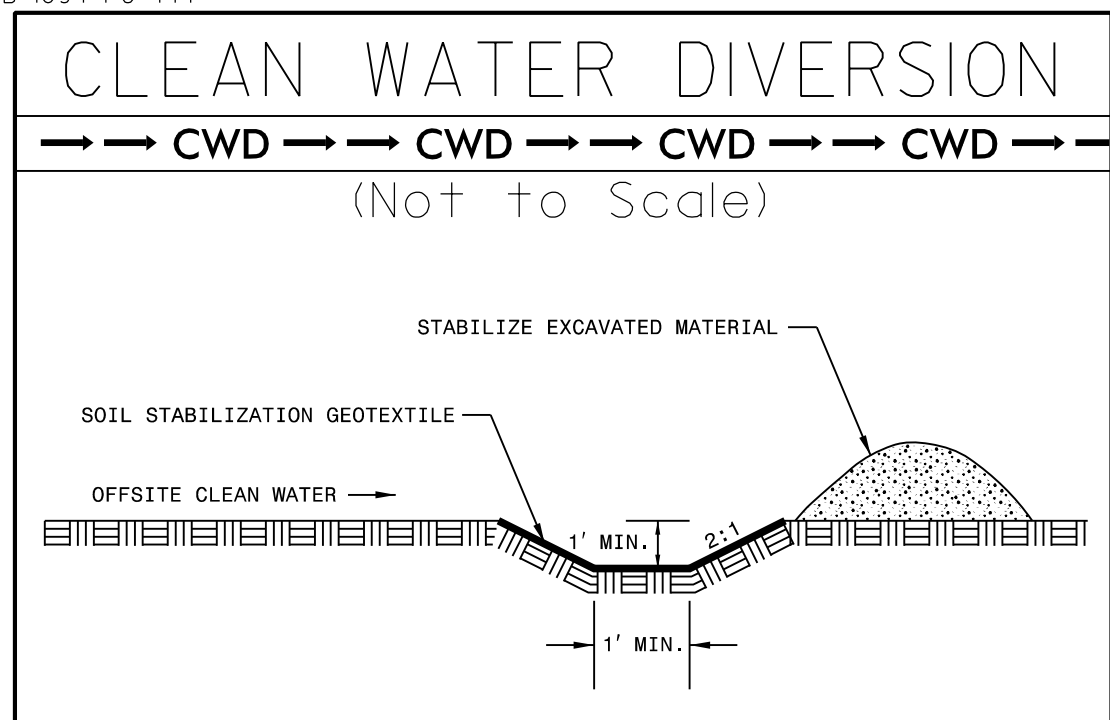
LINDA COGGIN DAVIS
DB 225 PG 390

3

JOHN S. PICKLER, II & WIFE
AMANDA D. PICKLER
DB 1094 PG 777

-L-

PI Sta 13+60.36	PI Sta 17+09.32
$\Delta = 4' 51'' 07.4''$ (RT)	$\Delta = 23' 32'' 14.7''$ (LT)
$D = 1' 11'' 37.2''$	$D = 8' 11'' 06.4''$
$L = 406.49'$	$L = 287.56'$
$T = 203.36'$	$T = 145.84'$
$R = 4,800.00'$	$R = 700.00'$
$SE = NC$	$SE = EX$
	$INC = 20'$



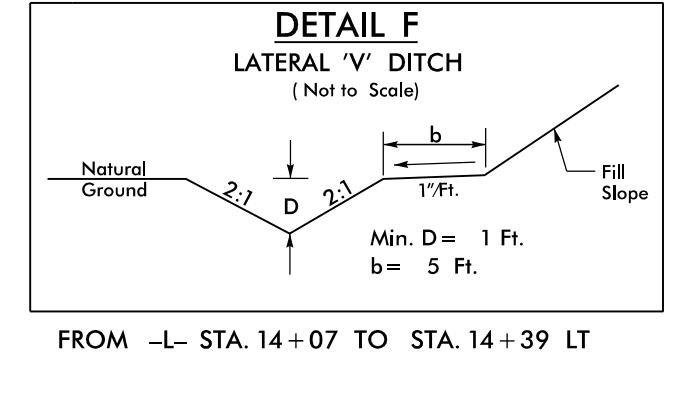
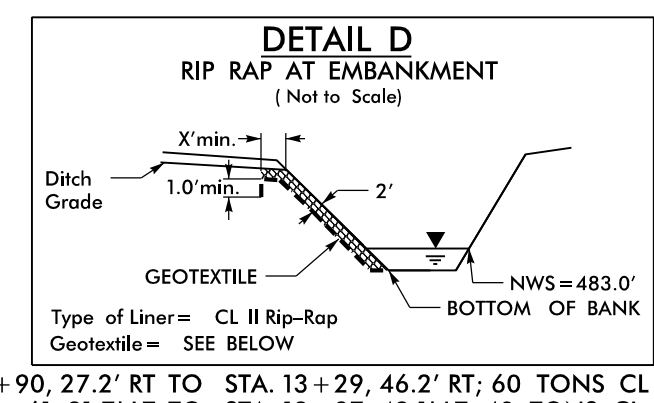
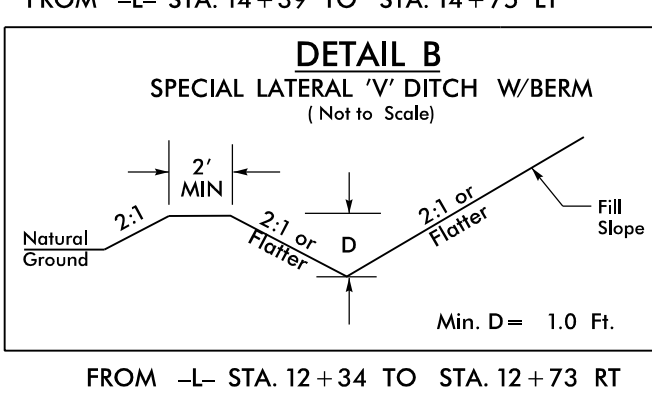
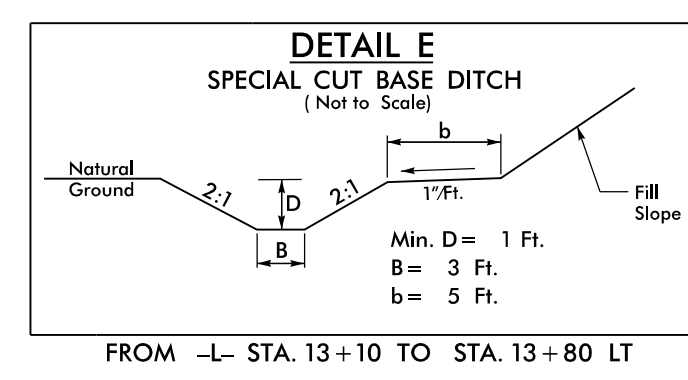
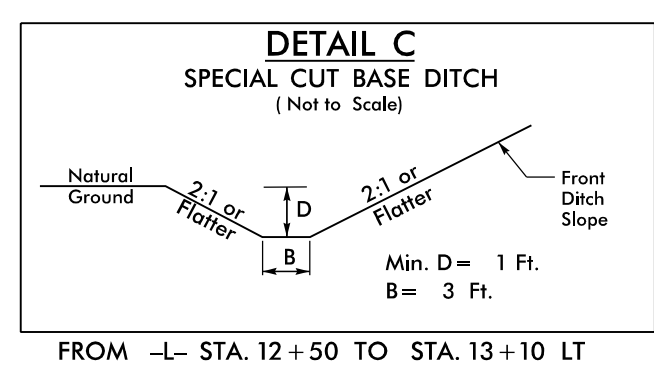
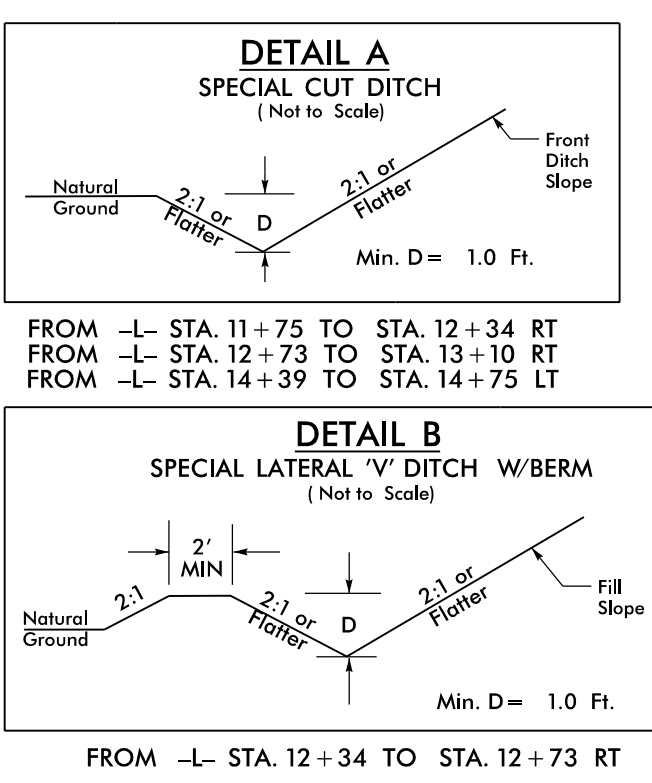
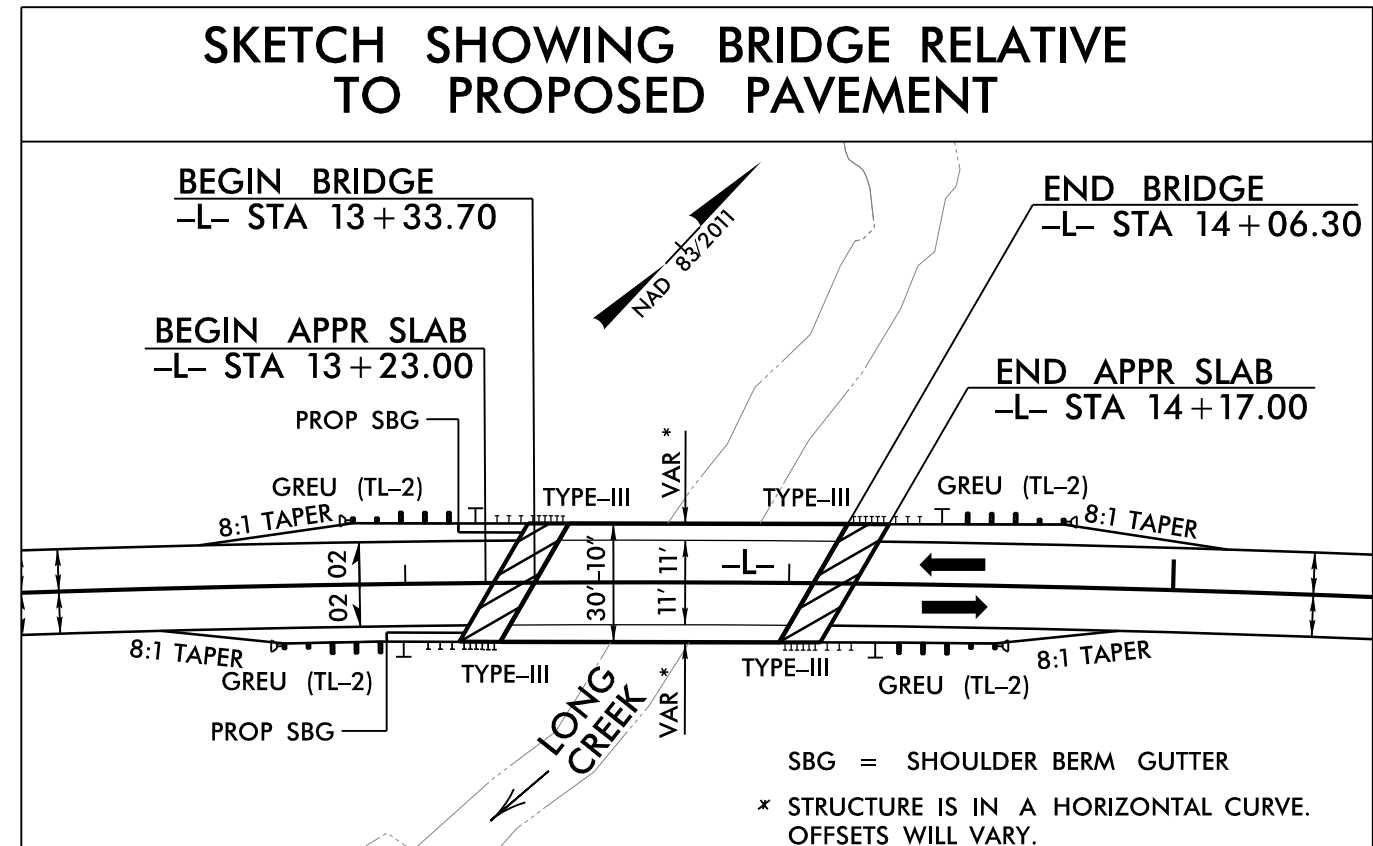
Place Matting for Erosion Control in Temporary Ditches and Diversions.

NOTE: PERIMETER EROSION CONTROL MEASURES SHALL BE INSTALLED DURING CLEARING AND GRUBBING PHASE.

NOTE: PLACE TEMPORARY ROCK SEDIMENT DAMS TYPE - B AND TEMPORARY ROCK SILT CHECKS TYPE - A AT DRAINAGE OUTLETS.

REVISIONS

10/26/2017 05:52:02 \\05\CA000\B5373\Roadside\B5373_REL\04_clearing_and_grubbing.dgn
 8/17/99



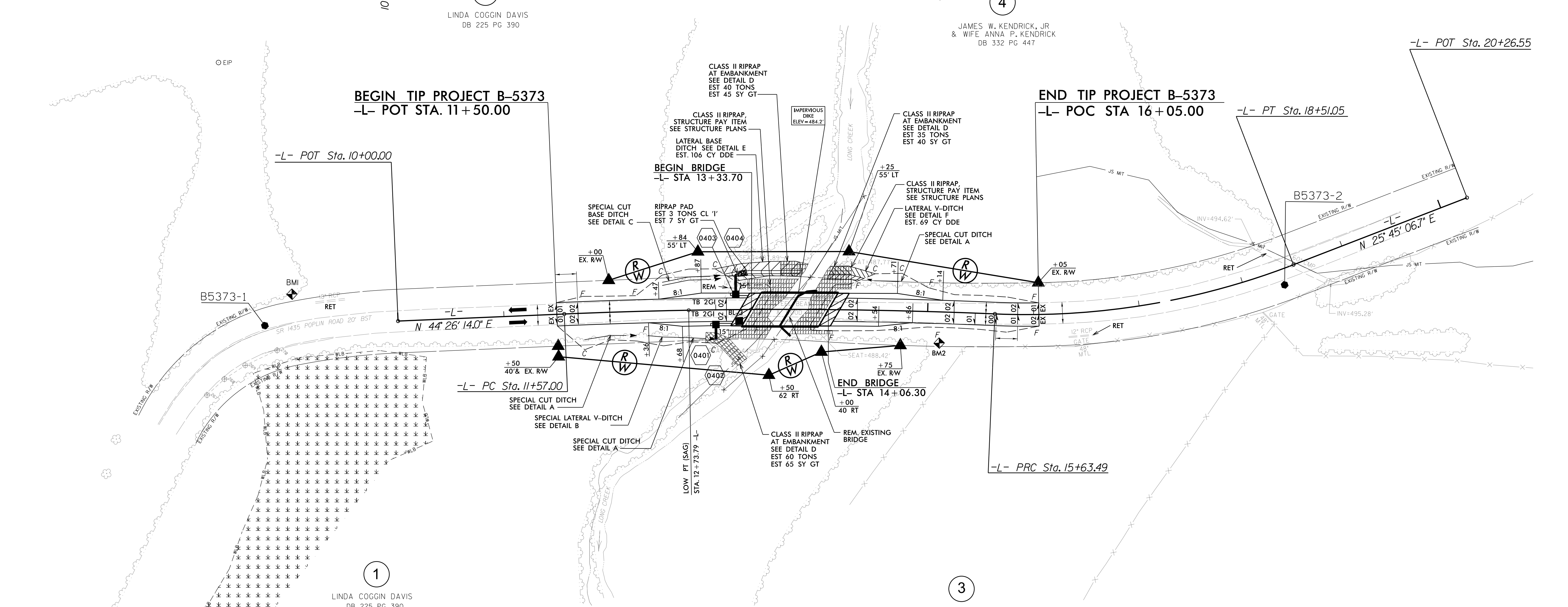
EXISTING END BENT #1 REMOVAL

2

LINDA COGGIN DAVIS
DB 225 PG 390

4

JAMES W. KENDRICK, JR
& WIFE ANNA P. KENDRICK
DB 332 PG 447



1

LINDA COGGIN DAVIS
DB 225 PG 390

3

JOHN S. PICKLER, II & WIFE
AMANDA D. PICKLER
DB 1094 PG 777

PI Sta 13+60.36	PI Sta 17+09.32
$\Delta = 4' 51' 07.4''$ (RT)	$\Delta = 23' 32' 14.7''$ (LT)
$D = 1' 11' 37.2''$	$D = 8' 11' 06.4''$
$L = 406.49'$	$L = 287.56'$
$T = 203.36'$	$T = 145.84'$
$R = 4,800.00'$	$R = 700.00'$
$SE = NC$	$SE = EX$
	$INC = 20'$

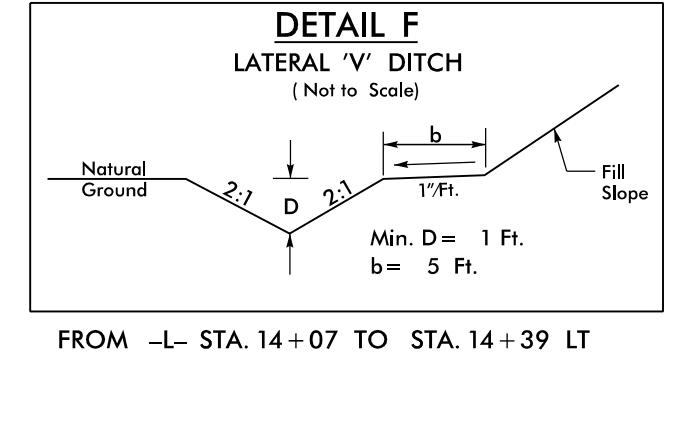
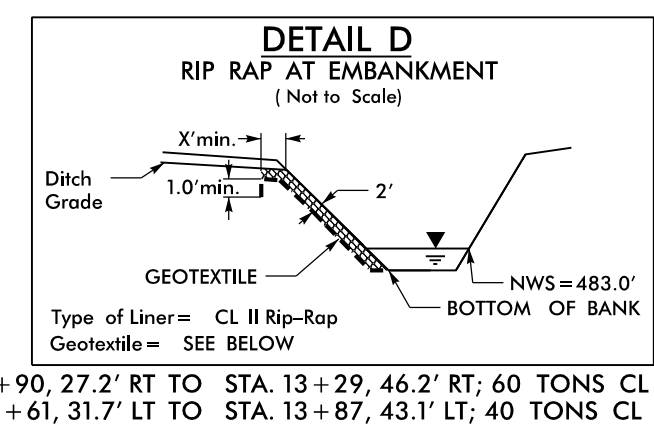
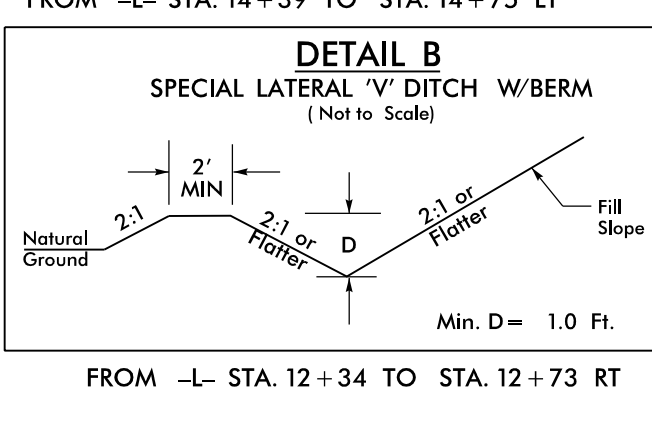
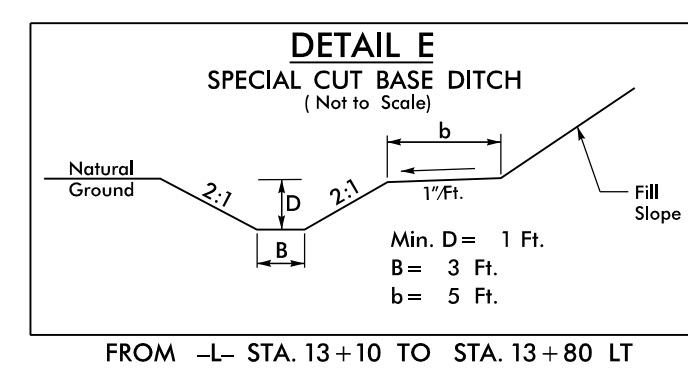
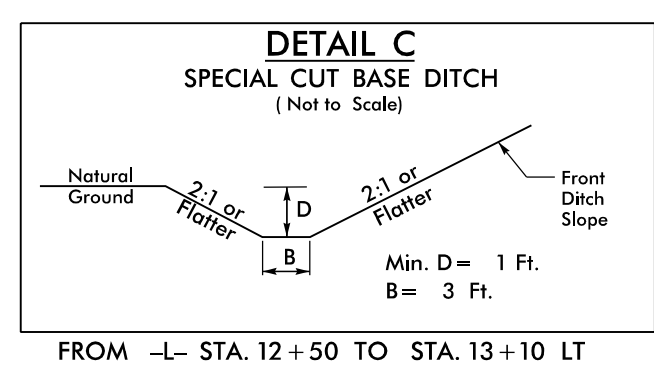
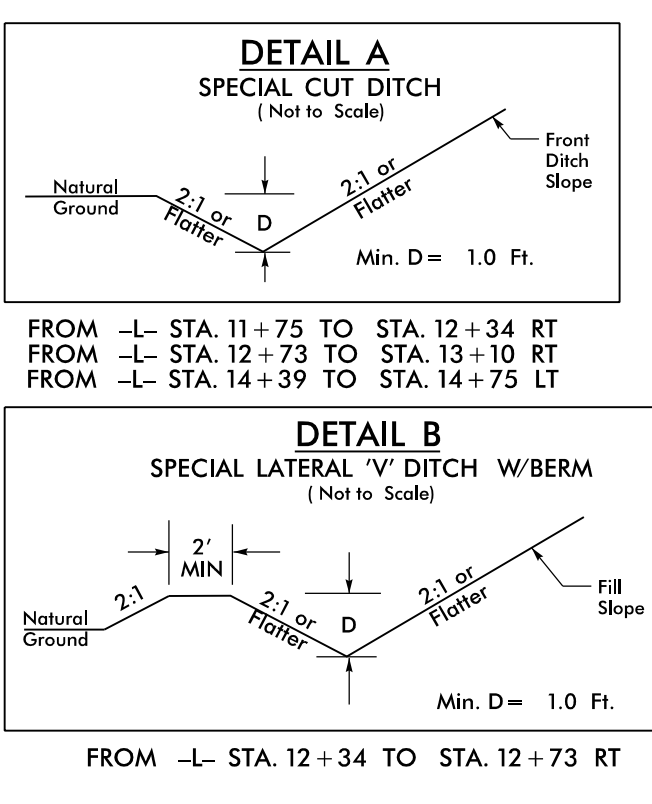
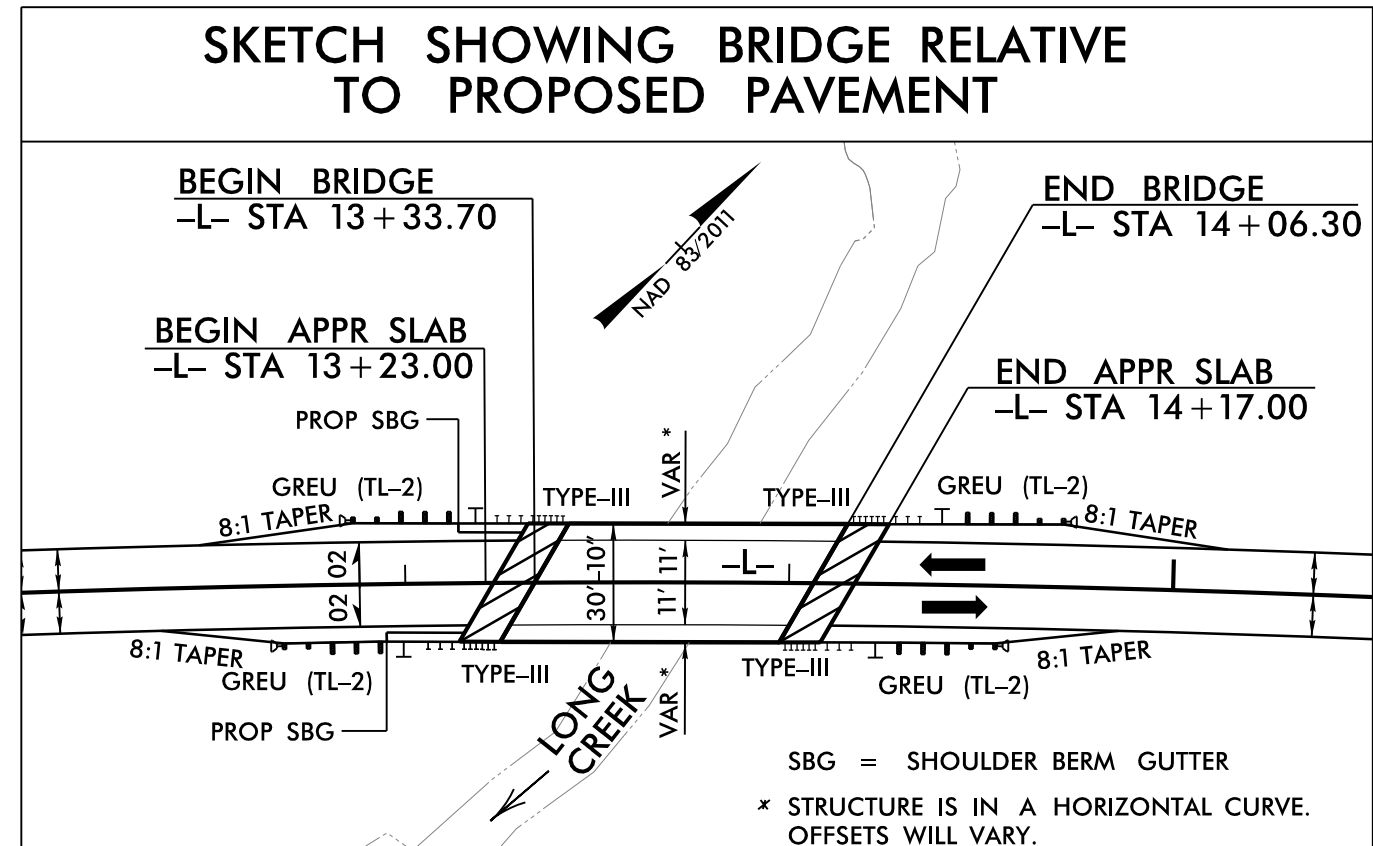
Impervious Dike:

The work covered by this section consists of furnishing, installing, maintaining, and removing an impervious dike for the purpose of diverting normal stream flow around the construction site. The Contractor shall construct an impervious dike in such a manner approved by the Engineer. The impervious dike shall not permit seepage of water into the construction site or contribute to siltation of the stream. The impervious dike shall be constructed of sandbags to an elevation of 484.2 ft. with a top width of 2 ft. in the locations noted on the plans or as directed by the Engineer.

1. Construct 15x15 Special Stilling Basin
2. Construct Impervious Dike
3. Construct Rip Rap Embankment
4. Remove Impervious Dike
5. Remove Special Stilling Basin

REVISIONS

10/26/2017 05:40:00 B5373_05_Impervious_Dike_Phase_1.dgn
 10/26/2017 05:40:00 B5373_05_Impervious_Dike_Phase_1.dgn
 10/26/2017 05:40:00 B5373_05_Impervious_Dike_Phase_1.dgn



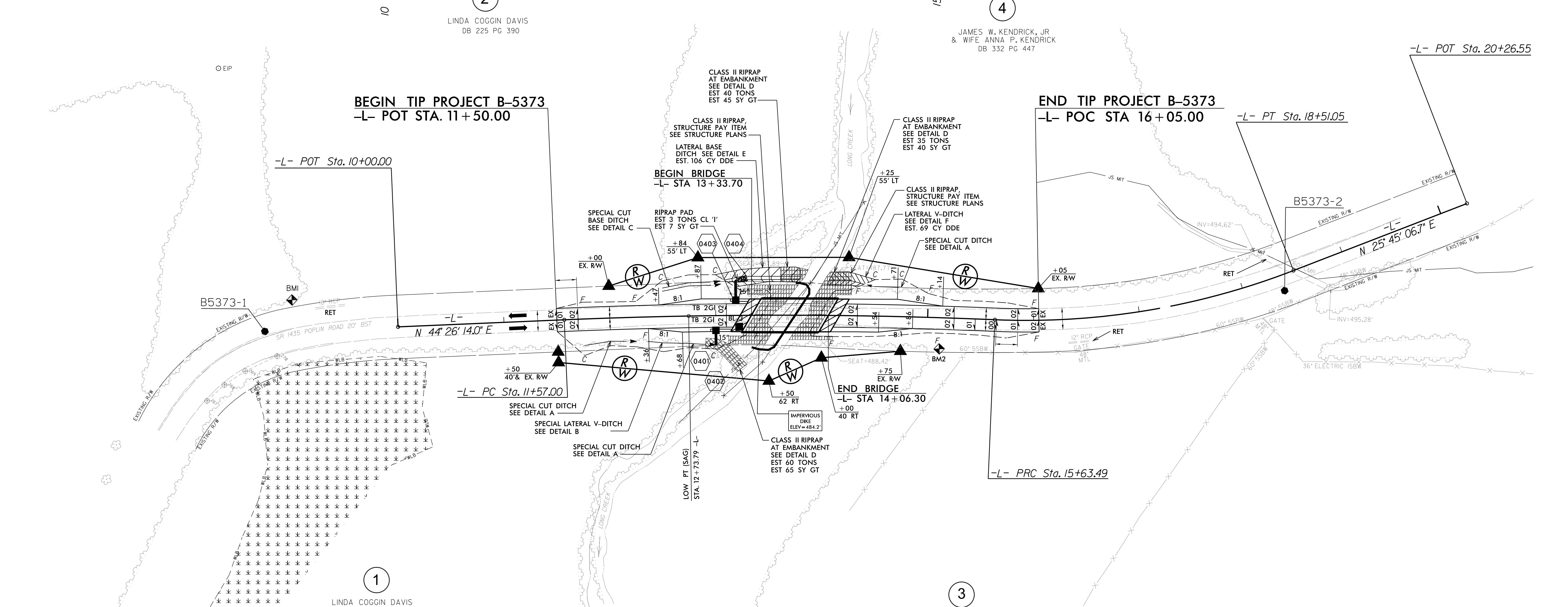
EXISTING END BENT #2 REMOVAL

2

LINDA COGGIN DAVIS
DB 225 PG 390

4

JAMES W. KENDRICK, JR
& WIFE ANNA P. KENDRICK
DB 332 PG 447



1

LINDA COGGIN DAVIS
DB 225 PG 390

3

JOHN S. PICKLER, II & WIFE
AMANDA D. PICKLER
DB 1094 PG 777

-L-

PI Sta 13+60.36	PI Sta 17+09.32
$\Delta = 4' 51'' 07.4''$ (RT)	$\Delta = 23' 32'' 14.7''$ (LT)
D = 1' 11' 37.2"	D = 8' 11' 06.4"
L = 406.49'	L = 287.56'
T = 203.36'	T = 145.84'
R = 4,800.00'	R = 700.00'
SE = NC	SE = EX
	INC = 20'

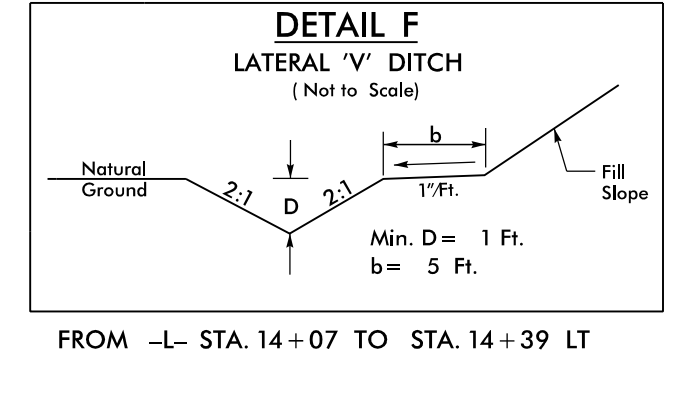
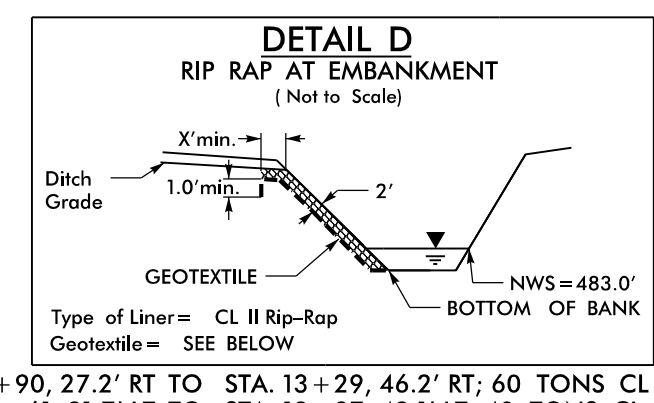
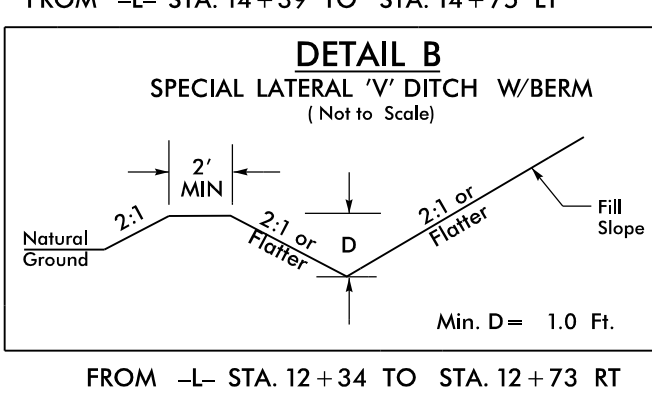
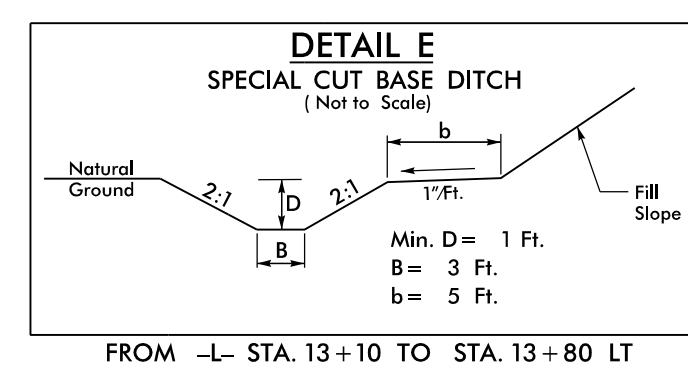
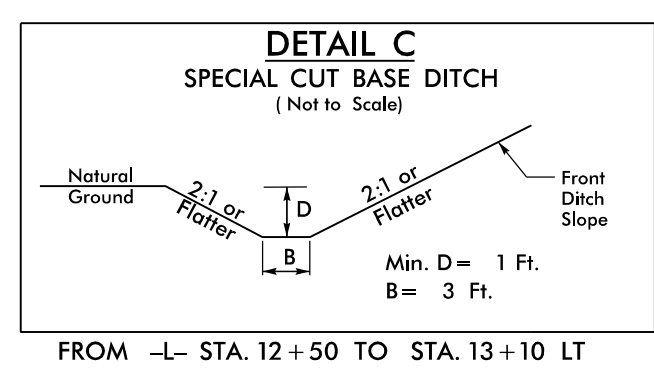
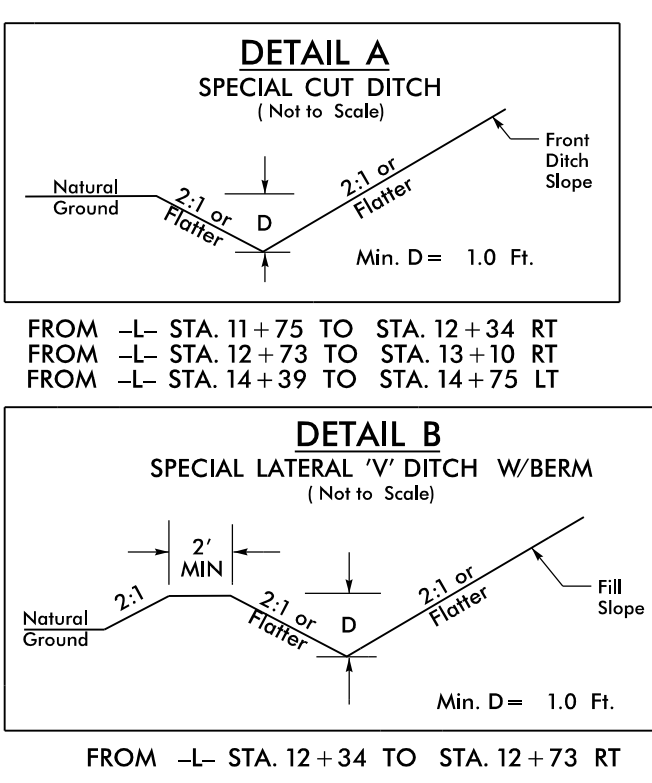
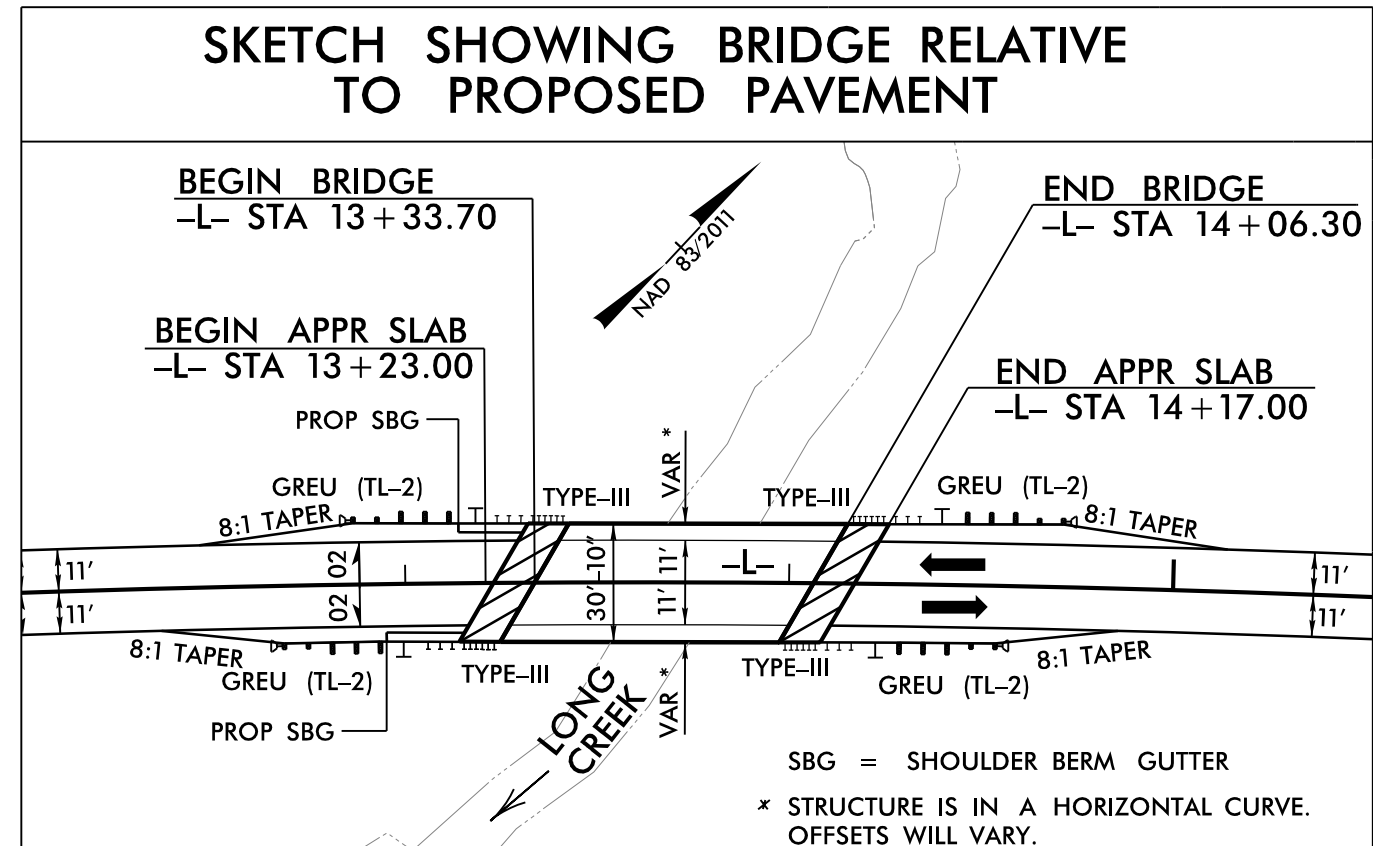
Impervious Dike:

The work covered by this section consists of furnishing, installing, maintaining, and removing an impervious dike for the purpose of diverting normal stream flow around the construction site. The Contractor shall construct an impervious dike in such a manner approved by the Engineer. The impervious dike shall not permit seepage of water into the construction site or contribute to siltation of the stream. The impervious dike shall be constructed of sandbags to an elevation of 484.2 ft. with a top width of 2 ft. in the locations noted on the plans or as directed by the Engineer.

1. Construct 15x15 Special Stilling Basin
2. Construct Impervious Dike
3. Construct Rip Rap Embankment
4. Remove Impervious Dike
5. Remove Special Stilling Basin

REVISIONS

10/26/2017 05:40:00 B5373_06_Impervious_Dike_Phase_2.dgn
 10/26/2017 05:40:00 B5373_06_Impervious_Dike_Phase_2.dgn
 10/26/2017 05:40:00 B5373_06_Impervious_Dike_Phase_2.dgn

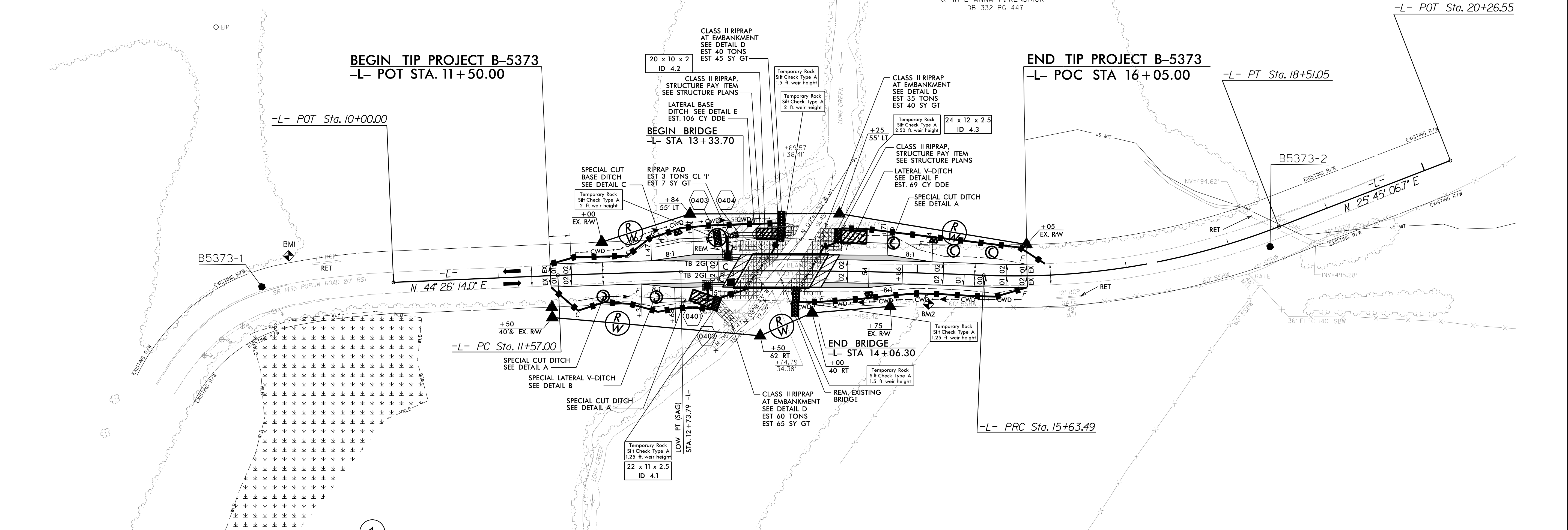


2

LINDA COGGIN DAVIS
DB 225 PG 390

4

JAMES W. KENDRICK, JR
& WIFE ANNA P. KENDRICK
DB 332 PG 447



1

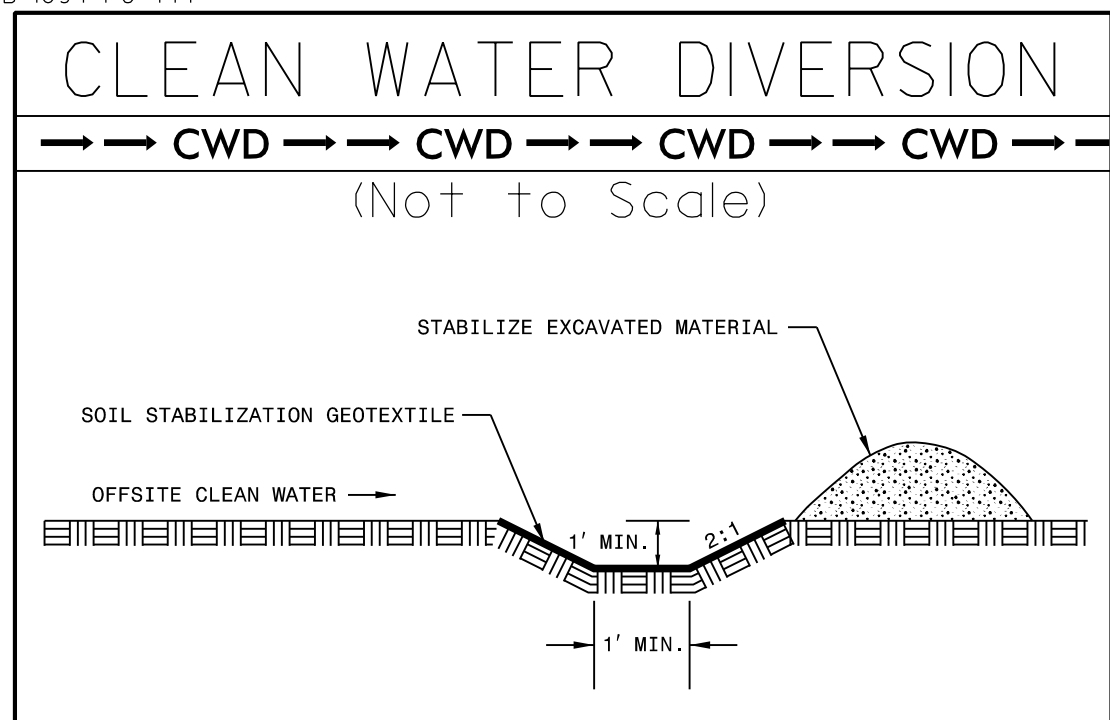
LINDA COGGIN DAVIS
DB 225 PG 390

3

JOHN S. PICKLER, II & WIFE
AMANDA D. PICKLER
DB 1094 PG 777

-L-

PI Sta 13+60.36	PI Sta 17+09.32
$\Delta = 4' 51' 07.4''$ (RT)	$\Delta = 23' 32' 14.7''$ (LT)
$D = 1' 11' 37.2''$	$D = 8' 11' 06.4''$
$L = 406.49'$	$L = 287.56'$
$T = 203.36'$	$T = 145.84'$
$R = 4,800.00'$	$R = 700.00'$
$SE = NC$	$SE = EX$
	$INC = 20'$



INSTALL MATTING FOR EROSION CONTROL IN THE PROPOSED DITCH LINE.
STA. 12+73 TO 12+90 RT
STA. 14+00 TO 14+38 RT
STA. 13+10 TO 13+80 LT
STA. 14+07 TO 15+95 LT

Place Matting for Erosion Control in Temporary Ditches and Diversions.

REVISIONS

8/17/99
 10/26/2017
 I:\Projects\B5373\Roadside\B5373_REL\07_f.ino.dgn
 10/26/2017