

**This electronic collection of documents is provided
for the convenience of the user
and is Not a Certified Document –**

**The documents contained herein were originally issued
and sealed by the individuals whose names and license
numbers appear on each page, on the dates appearing
with their signature on that page.**

**This file or an individual page
shall not be considered a certified document.**

TIP PROJECT: U-5925

T.I.P. NO.	SHEET NO.
U-5925	UO-1

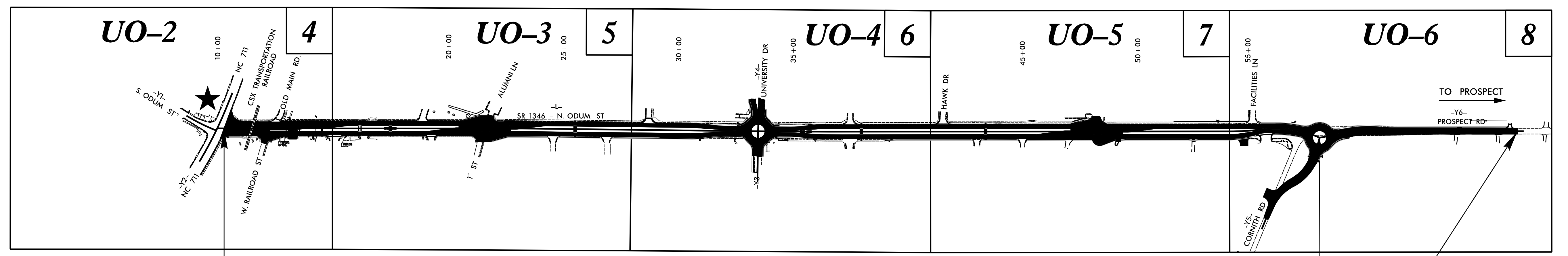
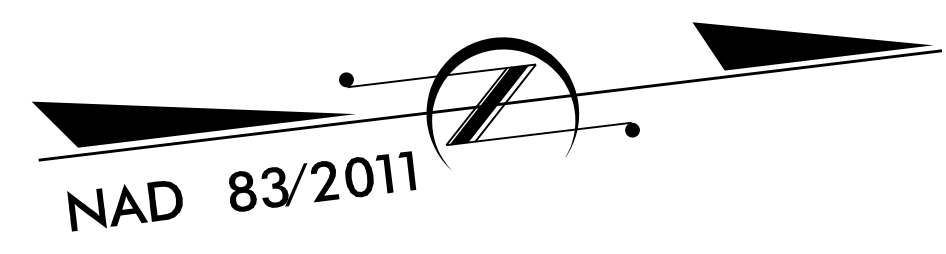
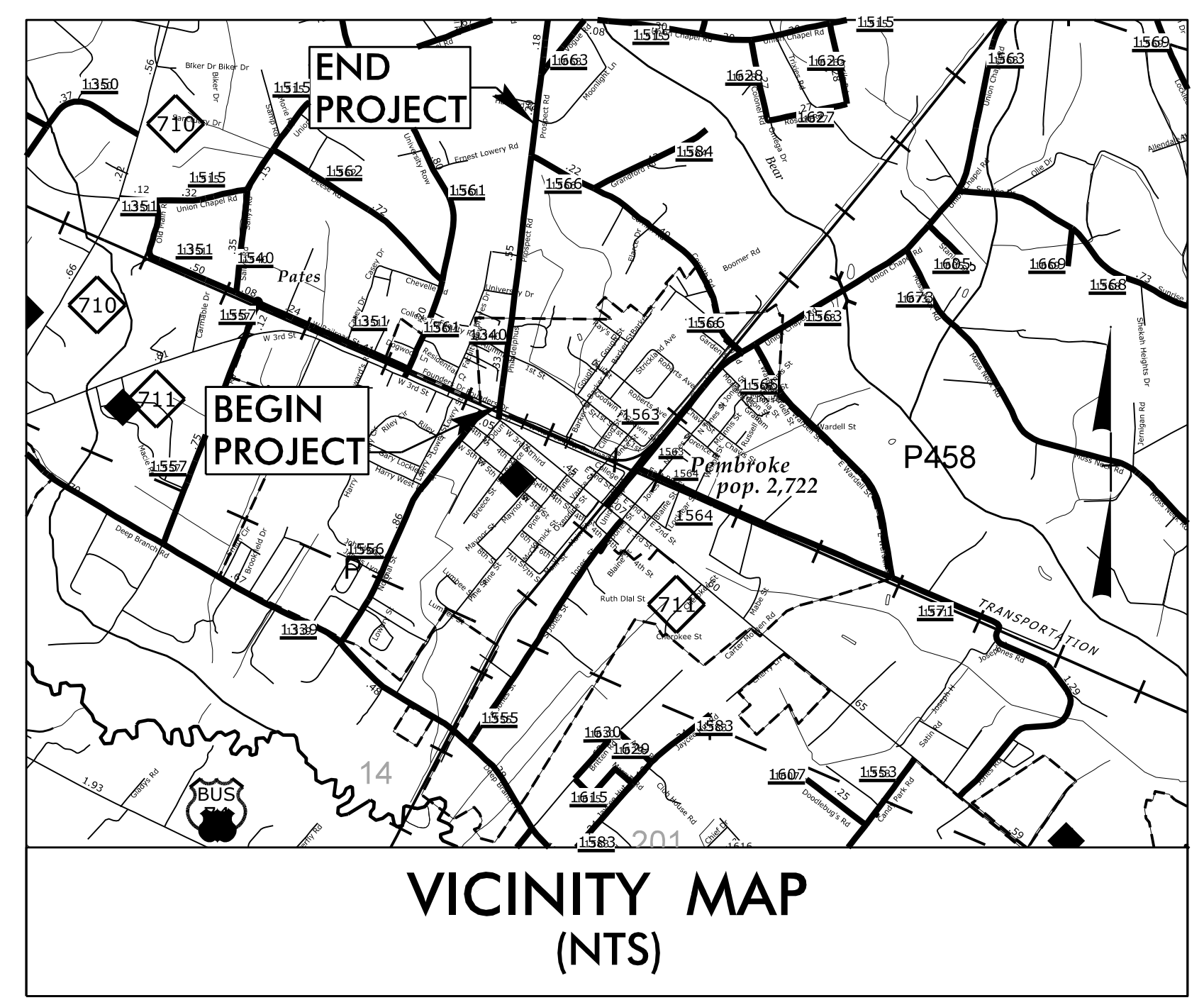
NOTE:
 ALL UTILITY WORK SHOWN ON THIS SHEET IS DONE BY OTHERS.
 NO PAYMENT WILL BE MADE TO THE CONTRACTOR FOR UTILITY WORK SHOWN ON THIS SHEET.

STATE OF NORTH CAROLINA
 DIVISION OF HIGHWAYS

UTILITIES BY OTHERS PLANS ROBESON COUNTY

LOCATION: SR 1340 (NORTH ODUM STREET / PROSPECT ROAD), FROM NC 711 (THIRD STREET) TO SR 1566 (CORNITH ROAD)

TYPE OF WORK: UTILITIES BY OTHERS



BEGIN TIP PROJECT U-5925
 BEGIN CONSTRUCTION
 -L- STA. 10+29.51

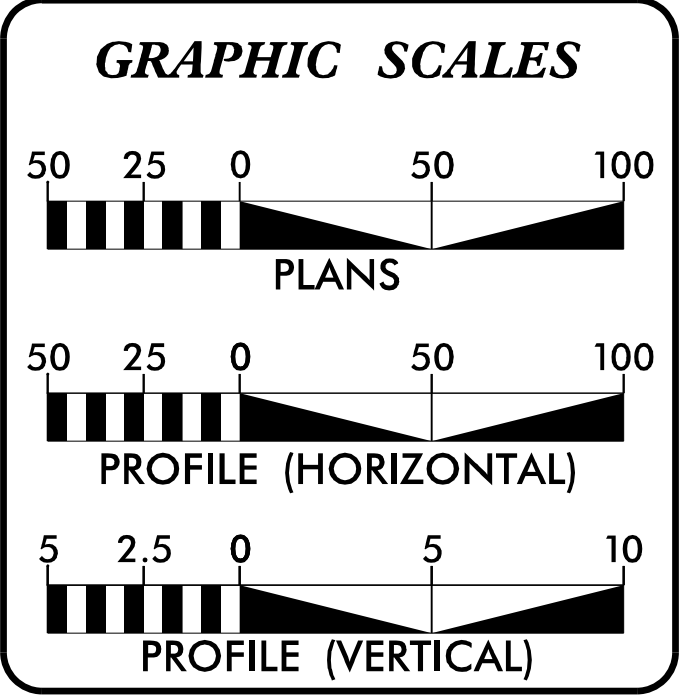
END TIP PROJECT U-5925
 -L- STA. 57+98.17 =
 -Y5- STA. 14+85.46
 -Y6- STA. 10+00.00

END CONSTRUCTION
 -Y6- STA. 18+62.45

★ SIGNAL MODIFICATION REQUIRED

THIS PROJECT IS WITHIN THE CITY LIMITS OF PEMBROKE.


DIVISION DESIGN CONSTRUCTION - NCDOT DIVISION 6
 NCDOT CONTACT: SEAN MATUSZEWSKI



INDEX OF SHEETS	
SHEET NO.:	DESCRIPTION:
UO-1	TITLE SHEET
UO-2 THRU UO-6	UBO PLAN SHEETS

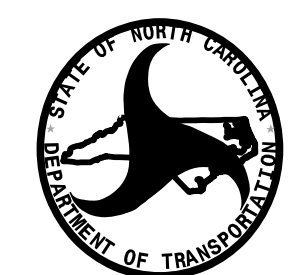
- UTILITY OWNERS WITH CONFLICTS
- (A) DUKE ENERGY - POWER (DISTRIBUTION)
 - (B) PIEDMONT NATURAL GAS - GAS (DISTRIBUTION)
 - (C) AT&T - COMMUNICATIONS
 - (D) SPECTRUM - COMMUNICATIONS
 - (E) LUMBEE RIVER EMC - COMMUNICATIONS
 - (F) MCNC - COMMUNICATIONS
 - (G) UNC PEMBROKE - COMMUNICATIONS/ POWER (DISTRIBUTION)

PREPARED IN THE OFFICE OF:

DAVIS • MARTIN • POWELL 
 ENGINEERS & SURVEYORS

6415 OLD PLANK RD., HIGH POINT, NC 27285
 PHONE: (336)886-4821 FAX: (336)886-4458
 WWW.DMP4INC.COM LICENSE: F-0245

<u>Randy McNeill, P.E.</u>	UTILITY PROJECT MANAGER
<u>Steve McKee, P.E.</u>	PROJECT UTILITY COORDINATOR
<u>Jamshid Hafshejani</u>	PROJECT UTILITY TECHNICIAN



DIVISION OF HIGHWAYS
 HIGHWAY DIVISION 6

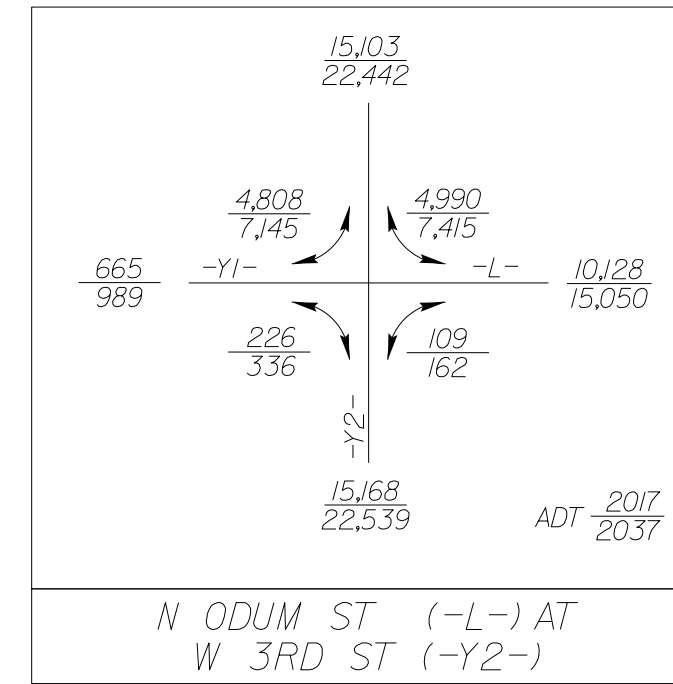
P.O. BOX 1150
 FAYETTEVILLE, NC 28302
 PHONE (910) 364-0600
 FAX (910) 486-1959

<u>Sean Matuszewski</u>	DIVISION DESIGN ENGINEER
<u>Randy Rogers</u>	DIVISION UTILITIES COORDINATOR

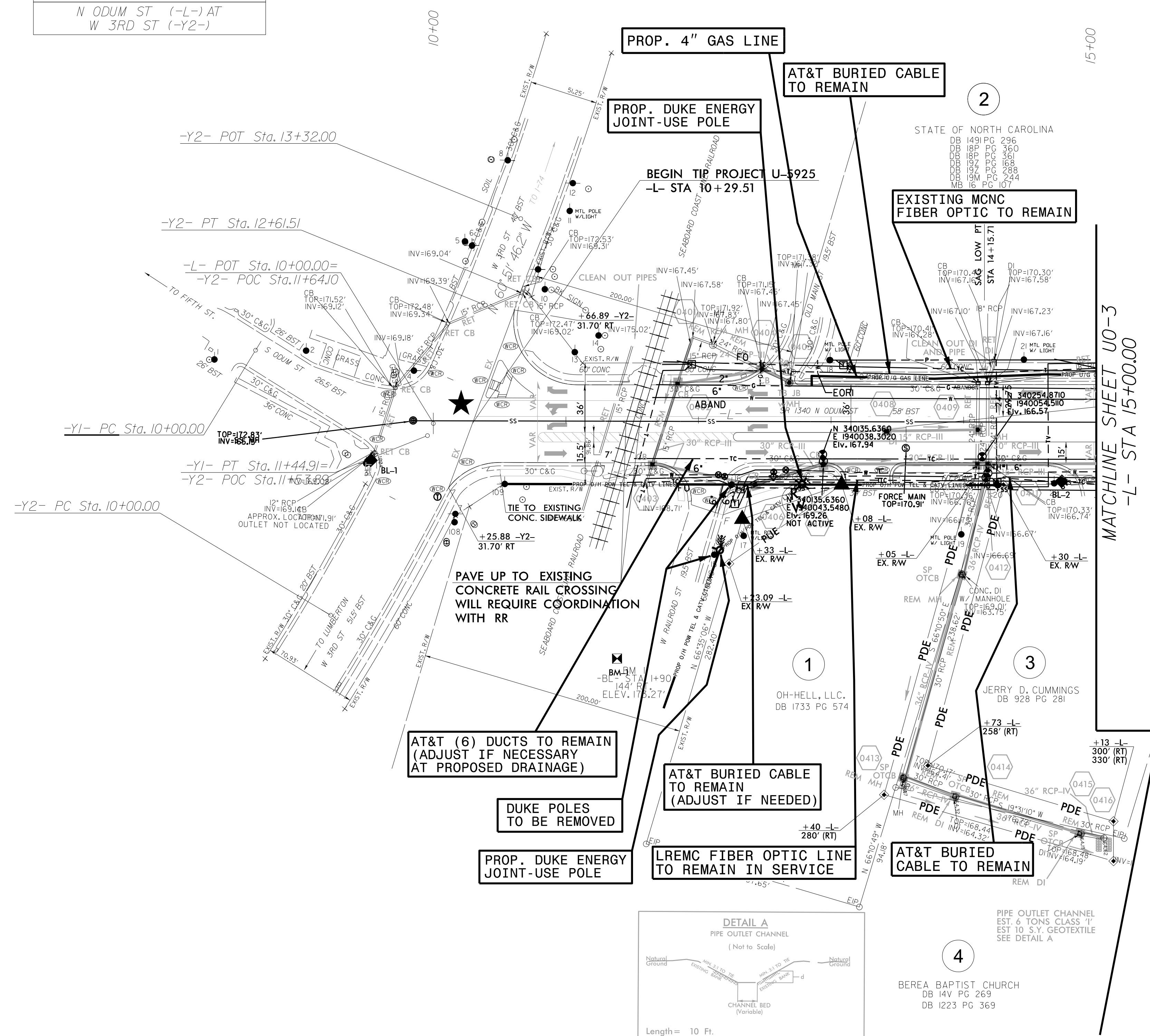
\$\$\$\$\$ SYSTEM \$\$\$\$\$\$ DGN \$\$\$\$\$\$ USER NAME \$\$\$\$\$\$

UTILITIES BY OTHERS

NOTE:
ALL UTILITY WORK SHOWN ON THIS SHEET WILL BE DONE BY OTHERS. NO PAYMENT WILL BE MADE TO THE CONTRACTOR FOR UTILITY WORK SHOWN ON THIS SHEET.



NAD 83/2011



PROP. 4" GAS LINE

AT&T BURIED CABLE TO REMAIN

PROP. DUKE ENERGY JOINT-USE POLE

BEGIN TIP PROJECT U-5925
-L- STA 10+29.51

EXISTING MCNC FIBER OPTIC TO REMAIN

AT&T (6) DUCTS TO REMAIN (ADJUST IF NECESSARY AT PROPOSED DRAINAGE)

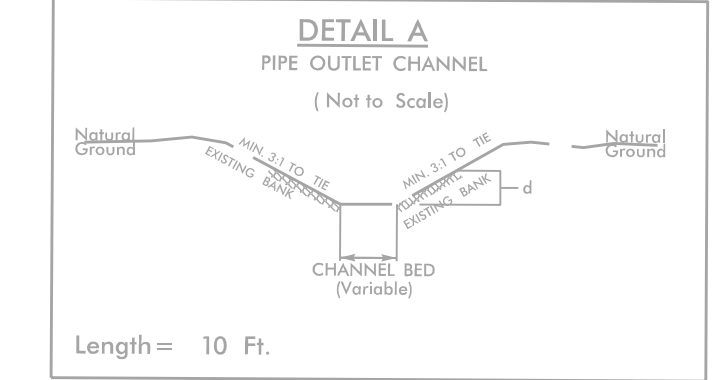
DUKE POLES TO BE REMOVED

PROP. DUKE ENERGY JOINT-USE POLE

AT&T BURIED CABLE TO REMAIN (ADJUST IF NEEDED)

LREMC FIBER OPTIC LINE TO REMAIN IN SERVICE

AT&T BURIED CABLE TO REMAIN

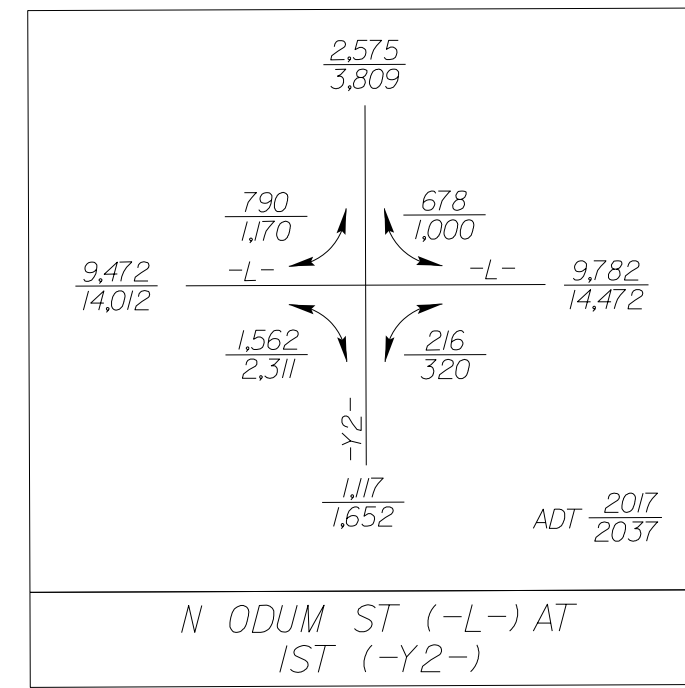


BEREA BAPTIST CHURCH
DB 14V PG 269
DB 1223 PG 369

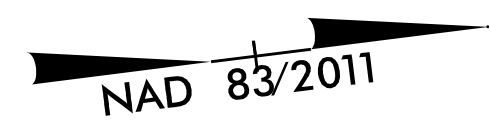
5/14/99
66 67 68 69 70 71 72 73 74 75 76 77 78 79 80 81 82 83 84 85 86 87 88 89 90 91 92 93 94 95 96 97 98 99 00

UTILITIES BY OTHERS

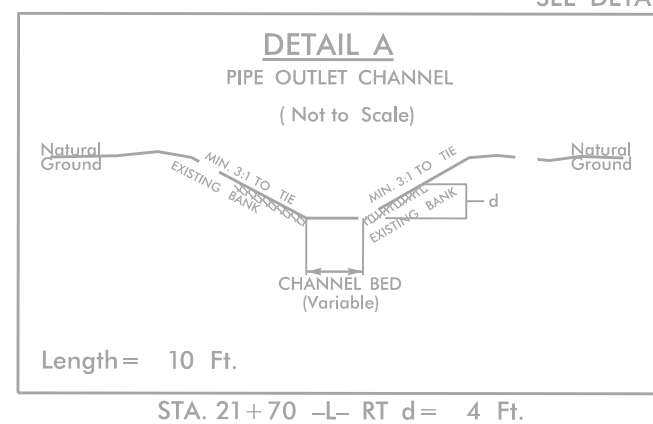
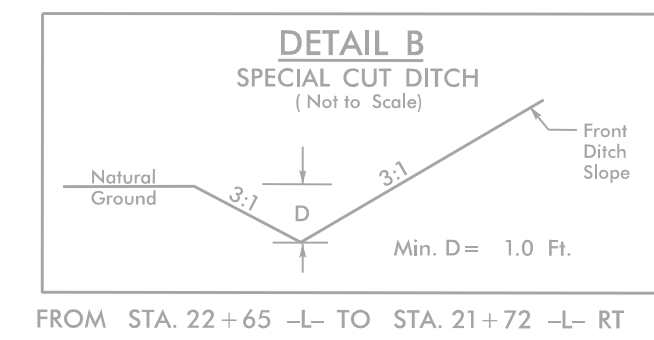
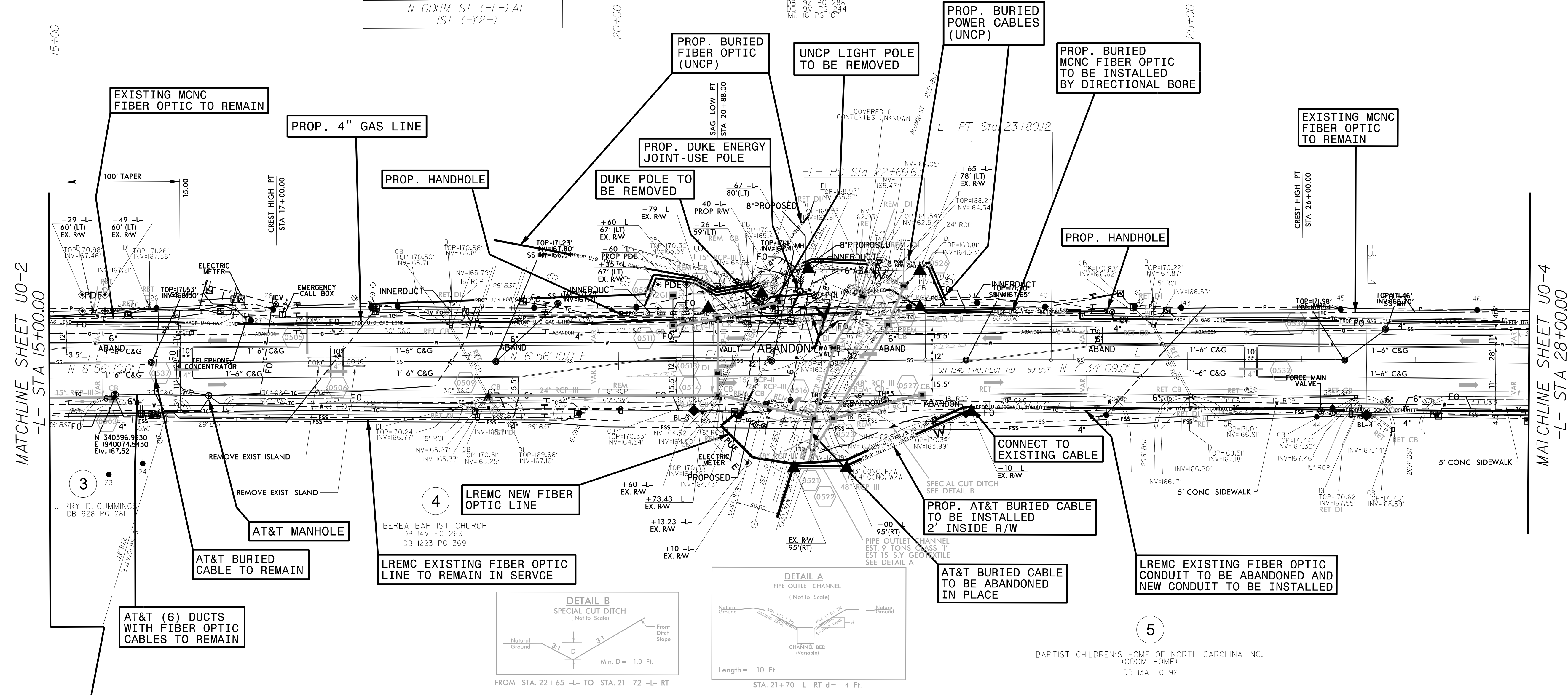
NOTE:
 ALL UTILITY WORK SHOWN ON THIS SHEET WILL BE DONE BY OTHERS. NO PAYMENT WILL BE MADE TO THE CONTRACTOR FOR UTILITY WORK SHOWN ON THIS SHEET.



-L-
 PI Sta 23+24.87
 $\Delta = 0^\circ 37' 59.0'' (RT)$
 $D = 0^\circ 34' 22.6''$
 $L = 110.49'$
 $T = 55.25'$
 $R = 10,000.00'$
 $Se = NC$

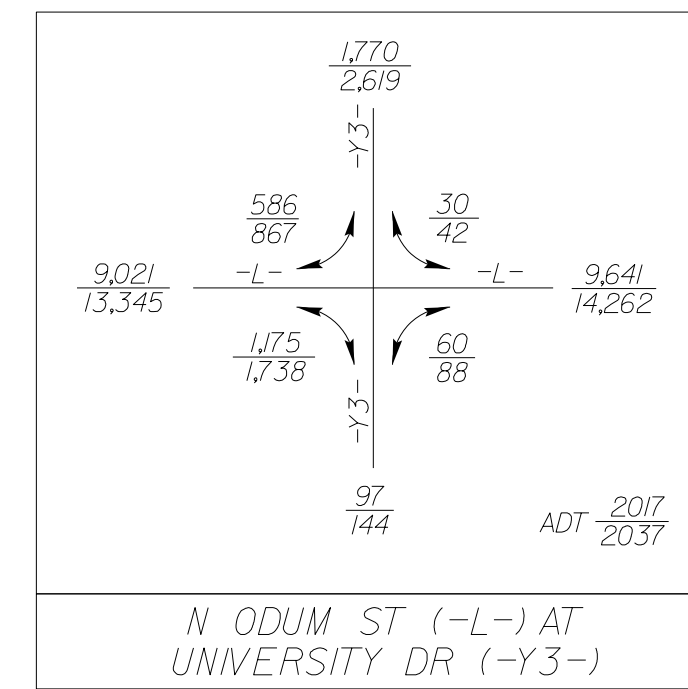


2
 STATE OF NORTH CAROLINA
 DB 1491 PG 296
 DB 1492 PG 360
 DB 1493 PG 361
 DB 1494 PG 362
 DB 1495 PG 363
 DB 1496 PG 244
 DB 1497 PG 107



UTILITIES BY OTHERS

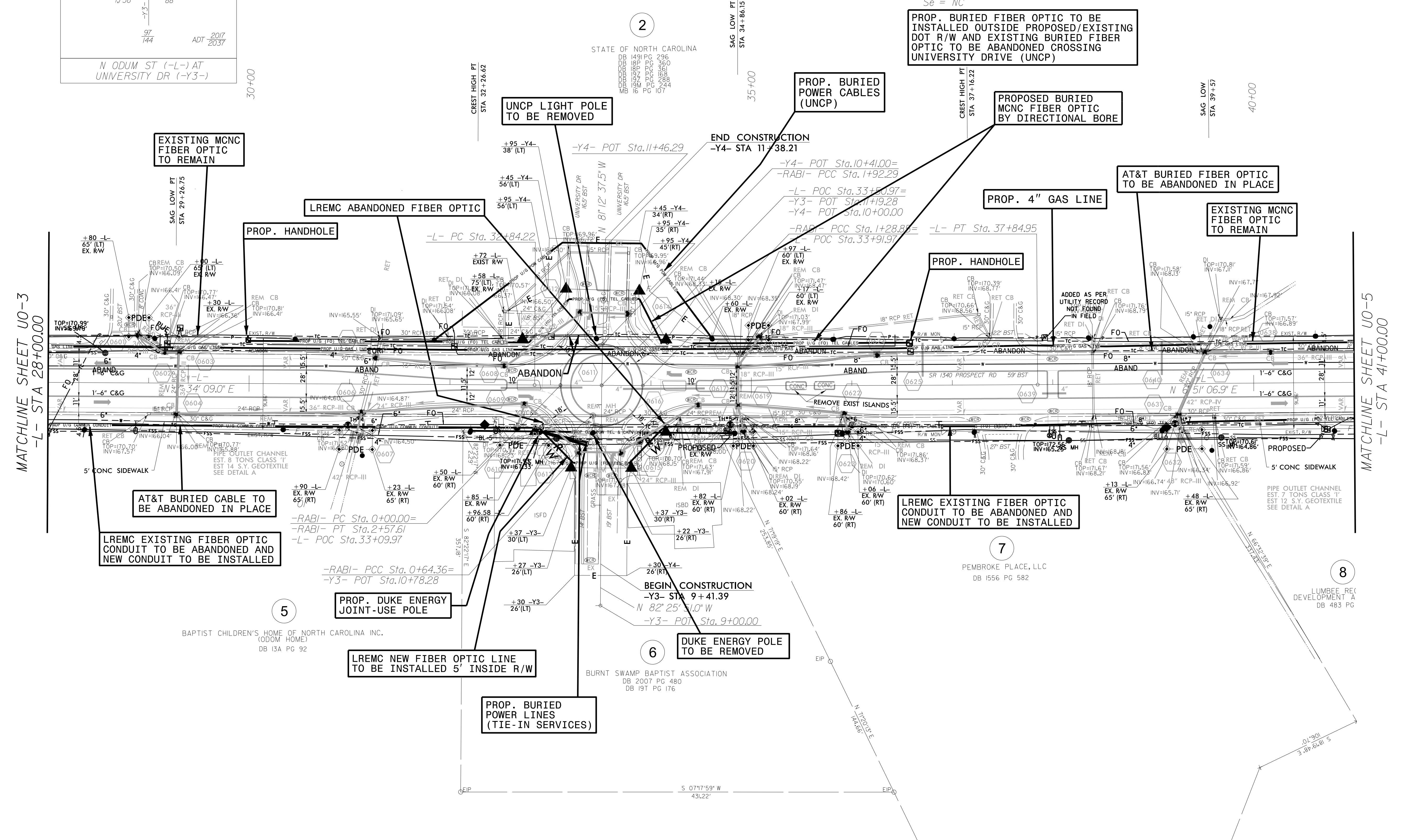
NOTE:
 ALL UTILITY WORK SHOWN ON THIS SHEET WILL BE DONE BY OTHERS. NO PAYMENT WILL BE MADE TO THE CONTRACTOR FOR UTILITY WORK SHOWN ON THIS SHEET.



-RABI-			
PI Sta 0+40.95	PI Sta 1+05.44	PI Sta 2+34.22	PI Sta 1+68.90
$\Delta = 89^{\circ}56'01.8''$ (LT)	$\Delta = 90^{\circ}07'30.2''$ (LT)	$\Delta = 91^{\circ}17'11.7''$ (LT)	$\Delta = 88^{\circ}39'16.3''$ (LT)
$D = 139^{\circ}44'44.9''$	$D = 139^{\circ}44'44.9''$	$D = 139^{\circ}44'44.9''$	$D = 139^{\circ}44'44.9''$
$L = 64.36'$	$L = 64.49'$	$L = 65.32'$	$L = 63.44'$
$T = 40.95'$	$T = 41.09'$	$T = 41.93'$	$T = 40.05'$
$R = 41.00'$	$R = 41.00'$	$R = 41.00'$	$R = 41.00'$

-L-	
PI Sta 35+34.59	$\Delta = 0^{\circ}43'02.1''$ (LT)
	$D = 0^{\circ}08'35.7''$
	$L = 500.73'$
	$T = 250.37'$
	$R = 40,000.00'$
	Se = NC

NAD 83/2011



MATCHLINE SHEET U0-3
-L- STA 28+00.00

MATCHLINE SHEET U0-5
-L- STA 41+00.00

UTILITIES BY OTHERS

NOTE:
ALL UTILITY WORK SHOWN ON THIS SHEET WILL BE DONE BY OTHERS. NO PAYMENT WILL BE MADE TO THE CONTRACTOR FOR UTILITY WORK SHOWN ON THIS SHEET.

