

**This electronic collection of documents is provided
for the convenience of the user
and is Not a Certified Document –**

**The documents contained herein were originally issued
and sealed by the individuals whose names and license
numbers appear on each page, on the dates appearing
with their signature on that page.**

**This file or an individual page
shall not be considered a certified document.**

09, 02/28/2015

TIP PROJECT: U-5925

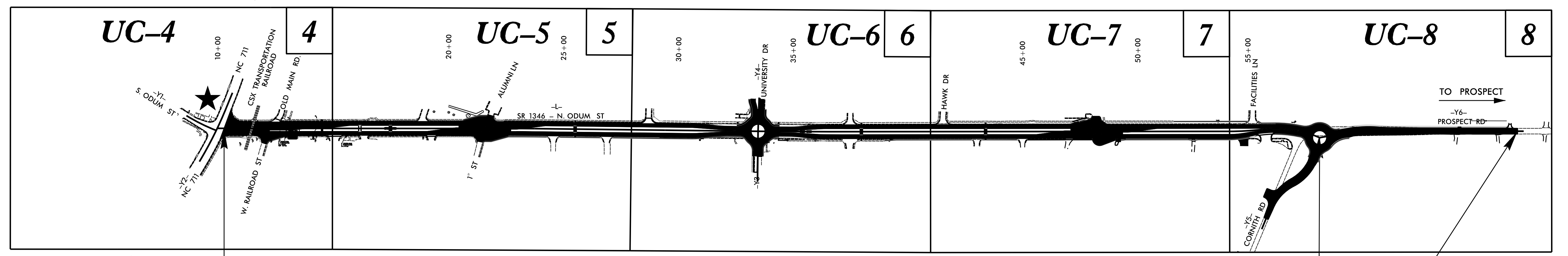
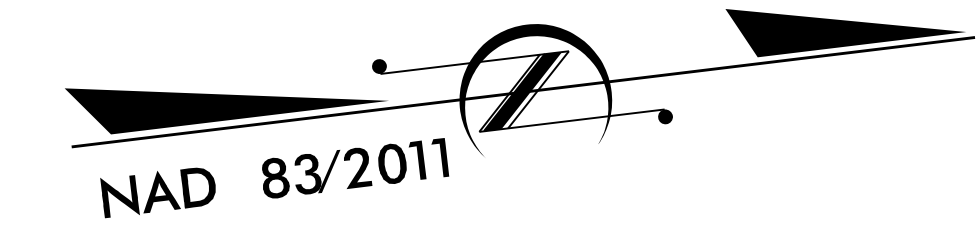
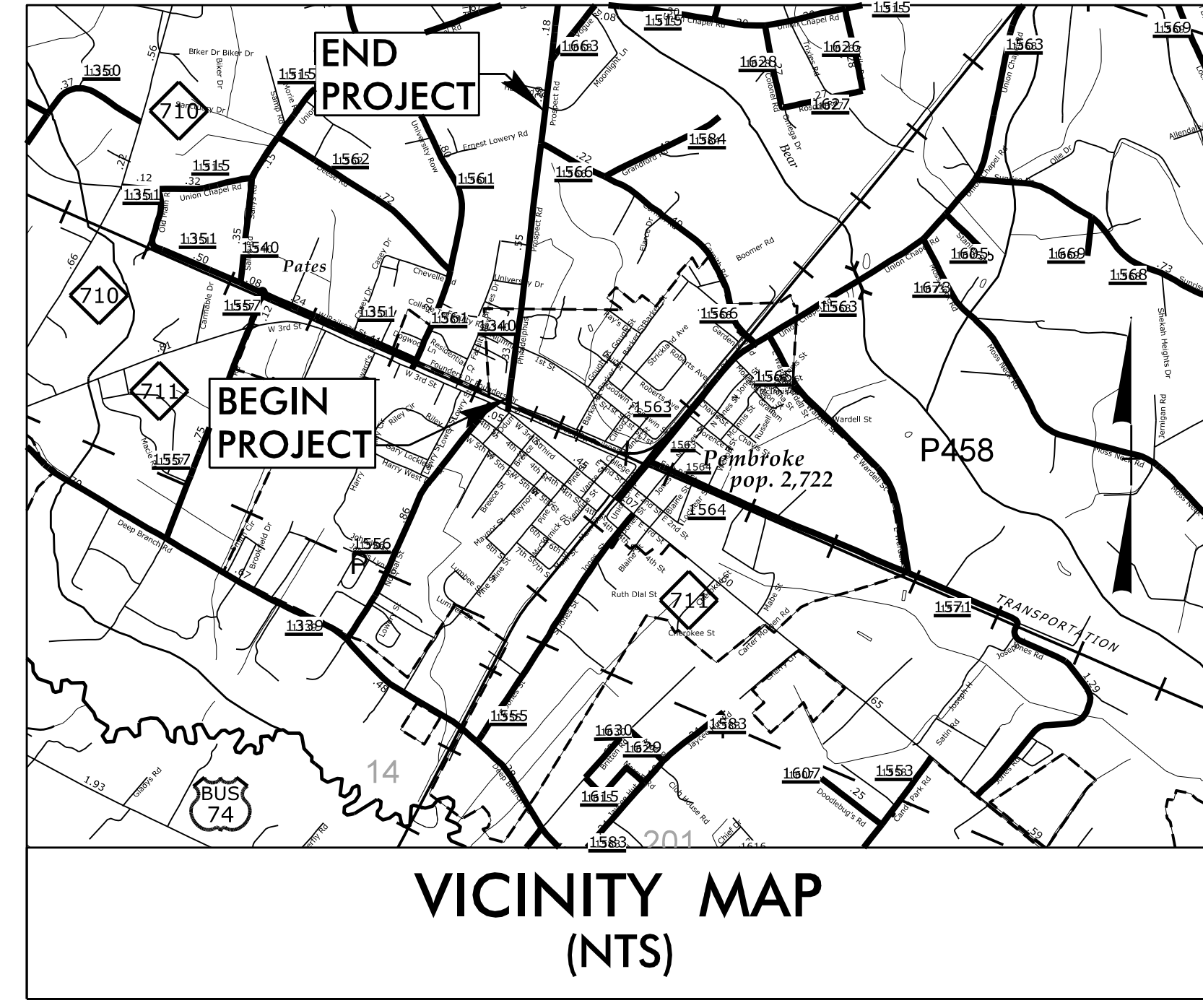
STATE OF NORTH CAROLINA
DIVISION OF HIGHWAYS

T.I.P. NO.	SHEET NO.
U-5925	UC-1

UTILITY CONSTRUCTION PLANS ROBESON COUNTY

LOCATION: SR 1340 (NORTH ODUM STREET / PROSPECT ROAD), FROM
NC 711 (THIRD STREET) TO SR 1566 (CORNITH ROAD)

TYPE OF WORK: UTILITY CONSTRUCTION



BEGIN TIP PROJECT U-5925
BEGIN CONSTRUCTION
 -L- STA. 10 + 29.51

END TIP PROJECT U-5925
 -L- STA. 57 + 98.17 =
 -Y5- STA. 14 + 85.46
 -Y6- STA. 10 + 00.00

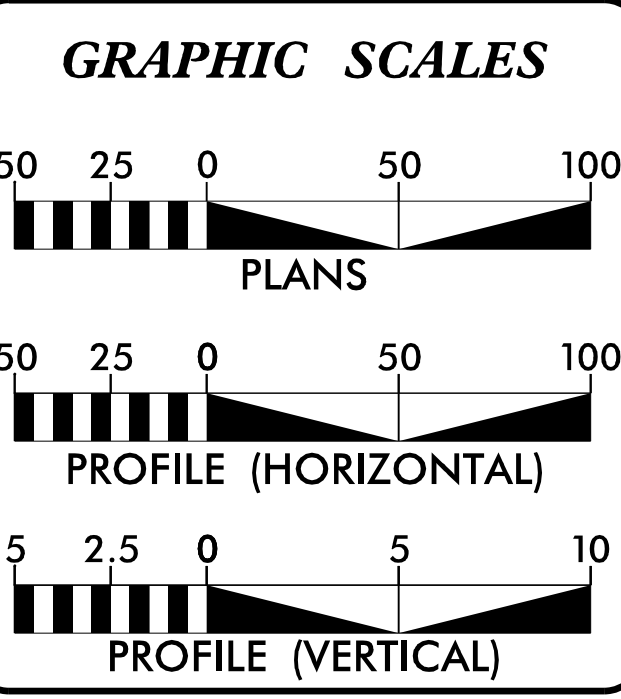
END CONSTRUCTION
 -Y6- STA. 18 + 62.45

★ SIGNAL MODIFICATION REQUIRED

THIS PROJECT IS WITHIN THE CITY LIMITS OF PEMBROKE.

DIVISION DESIGN CONSTRUCTION - NCDOT DIVISION 6
 NCDOT CONTACT: SEAN MATUSZEWSKI

DOCUMENT NOT CONSIDERED FINAL
 UNLESS ALL SIGNATURES COMPLETED



SHEET NO.:	DESCRIPTION:
UC-1	TITLE SHEET
UC-2	UTILITY SYMBOLOGY
UC-3	NOTES
UC-3A AND UC-3B	DETAILS
UC-4 THRU UC-8	UTILITY CONSTRUCTION SHEETS
UC-9 THRU UC-10	PROFILE SHEETS

WATER AND SEWER OWNERS ON PROJECT
(A) WATER - TOWN OF PEMBROKE
(B) SEWER - TOWN OF PEMBROKE
(C) WATER - ROBESON COUNTY

PREPARED IN THE OFFICE OF:
DAVIS • MARTIN • POWELL
 ENGINEERS & SURVEYORS **dmp**
 6415 OLD PLANK RD. HIGH POINT, NC 27285
 PHONE: (336)886-4821 FAX: (336)886-4458
 WWW.DMP-INC.COM LICENSE: F-0245

Randy McNeill, P.E.	UTILITIES PROJECT MANAGER
Steve McKee, P.E.	UTILITIES PROJECT ENGINEER
Jamshid Hafshejani	UTILITIES PROJECT DESIGNER

SEAL

DIVISION OF HIGHWAYS
 HIGHWAY DIVISION 6
 P.O. BOX 1150
 FAYETTEVILLE, NC 28302
 PHONE (910) 364-0600
 FAX (910) 486-1959

Sean Matuszewski	DIVISION DESIGN ENGINEER
Randy Rogers	DIVISION UTILITIES COORDINATOR

\$\$\$\$\$ SYSTEM \$\$\$\$\$\$
 \$\$\$ DDN \$\$\$
 \$\$\$ USERNAME \$\$\$

5/14/99

REVISIONS

UTILITY CONSTRUCTION

GENERAL NOTES:

1. THE PROPOSED UTILITY CONSTRUCTION SHALL MEET THE APPLICABLE REQUIREMENTS OF THE NC DEPARTMENT OF TRANSPORTATION'S "STANDARD SPECIFICATIONS FOR ROADS AND STRUCTURES" DATED JANUARY 2012.
2. THE EXISTING UTILITIES BELONG TO THE TOWN OF PEMBROKE AND ROBESON COUNTY.
3. ALL WATER LINES TO BE INSTALLED WITHIN COMPLIANCE OF THE RULES AND REGULATIONS OF THE NORTH CAROLINA DEPARTMENT OF ENVIRONMENTAL QUALITY, DIVISION OF WATER RESOURCES, PUBLIC WATER SUPPLY SECTION. ALL SEWER LINES TO BE INSTALLED WITHIN COMPLIANCE OF THE RULES AND REGULATIONS OF THE NORTH CAROLINA DEPARTMENT OF ENVIRONMENT QUALITY, DIVISION OF WATER RESOURCES, WATER QUALITY SECTION. PERFORM ALL WORK IN ACCORDANCE WITH THE APPLICABLE PLUMBING CODES.
4. THE UTILITY OWNER OWNS THE EXISTING UTILITY FACILITIES AND WILL OWN THE NEW UTILITY FACILITIES AFTER ACCEPTANCE BY THE DEPARTMENT. THE DEPARTMENT OWNS THE CONSTRUCTION CONTRACT AND HAS ADMINISTRATIVE AUTHORITY. COMMUNICATIONS AND DECISIONS BETWEEN THE CONTRACTOR AND UTILITY OWNER ARE NOT BINDING UPON THE DEPARTMENT OR THIS CONTRACT UNLESS AUTHORIZED BY THE ENGINEER. AGREEMENTS BETWEEN THE UTILITY OWNER AND CONTRACTOR FOR THE WORK THAT IS NOT PART OF THIS CONTRACT OR IS SECONDARY TO THIS CONTRACT ARE ALLOWED, BUT ARE NOT BINDING UPON THE DEPARTMENT.
5. PROVIDE ACCESS FOR THE DEPARTMENT PERSONNEL AND THE OWNER'S REPRESENTATIVES TO ALL PHASES OF CONSTRUCTION. NOTIFY DEPARTMENT PERSONNEL AND THE UTILITY OWNER TWO WEEKS PRIOR TO COMMENCEMENT OF ANY WORK AND ONE WEEK PRIOR TO SERVICE INTERRUPTION. KEEP UTILITY OWNERS' REPRESENTATIVES INFORMED OF WORK PROGRESS AND PROVIDE OPPORTUNITY FOR INSPECTION OF CONSTRUCTION AND TESTING.

6. THE PLANS DEPICT THE BEST AVAILABLE INFORMATION FOR THE LOCATION, SIZE, AND TYPE OF MATERIAL FOR ALL EXISTING UTILITIES. MAKE INVESTIGATIONS FOR DETERMINING THE EXACT LOCATION, SIZE, AND TYPE MATERIAL OF THE EXISTING FACILITIES AS NECESSARY FOR THE CONSTRUCTION OF THE PROPOSED UTILITIES AND FOR AVOIDING DAMAGE TO EXISTING FACILITIES. REPAIR ANY DAMAGE INCURRED TO EXISTING FACILITIES TO THE ORIGINAL OR BETTER CONDITION AT NO ADDITIONAL COST TO THE DEPARTMENT.
7. MAKE FINAL CONNECTIONS OF THE NEW WORK TO THE EXISTING SYSTEM WHERE INDICATED ON THE PLANS, AS REQUIRED TO FIT THE ACTUAL CONDITIONS, OR AS DIRECTED.
8. MAKE CONNECTIONS BETWEEN EXISTING AND PROPOSED UTILITIES AT TIMES MOST CONVENIENT TO THE PUBLIC, WITHOUT ENDANGERING THE UTILITY SERVICE, AND IN ACCORDANCE WITH THE UTILITY OWNER'S REQUIREMENTS. MAKE CONNECTIONS ON WEEKENDS, AT NIGHT, AND ON HOLIDAYS IF NECESSARY.
9. ALL UTILITY MATERIALS SHALL BE APPROVED PRIOR TO DELIVERY TO THE PROJECT. SEE 1500-7, " SUBMITTALS AND RECORDS" IN SECTION 1500 OF THE STANDARD SPECIFICATIONS.

PROJECT SPECIFIC NOTES:

1. UNLESS OTHERWISE NOTED, FOR PROPOSED WATER MAINS AND SEWER MAINS 4" AND LARGER, PIPE AND FITTINGS SHALL BE DUCTILE IRON, PC 350.
2. WATER LINE VALVES SHALL BE RESILIENT-SEAT GATE VALVES CONFORMING TO ANSI/AWWA C509, RATED FOR 200 PSI MINIMUM WORKING PRESSURE.
3. THE CONTRACTOR SHALL REPLACE ANY DAMAGED SEWER LATERALS AND/OR CLEANOUTS AS DIRECTED BY THE ENGINEER. THE NECESSARY QUANTITIES HAVE BEEN ADDED TO THE CONTRACT TO FACILITATE THIS PROCEDURE.

LIST OF STANDARD DRAWINGS

- 1515.01 WATER METER
- 1515.02 FIRE HYDRANT
- 1520.01 SEWER CLEAN OUT
- 1525.02 PRECAST CONCRETE SANITARY SEWER MANHOLE - OUTSIDE DROP
- 1525.06 PRECAST CONCRETE SANITARY SEWER MANHOLE WITH CAST-IN-PLACE BOTTOM

PROJECT REFERENCE NO. U-5925	SHEET NO. UC-3
DESIGNED BY: DMP	
DRAWN BY: DMP	
CHECKED BY: DMP	
APPROVED BY:	
REVISED:	
NORTH CAROLINA DEPARTMENT OF TRANSPORTATION UTILITIES ENGINEERING SEC. PHONE: (919) 707-6690 FAX: (919) 250-4151	
UTILITY CONSTRUCTION PLANS ONLY	

UTILITY CONSTRUCTION

DOCUMENT NOT CONSIDERED FINAL UNLESS ALL SIGNATURES COMPLETED

5/14/99

REVISIONS

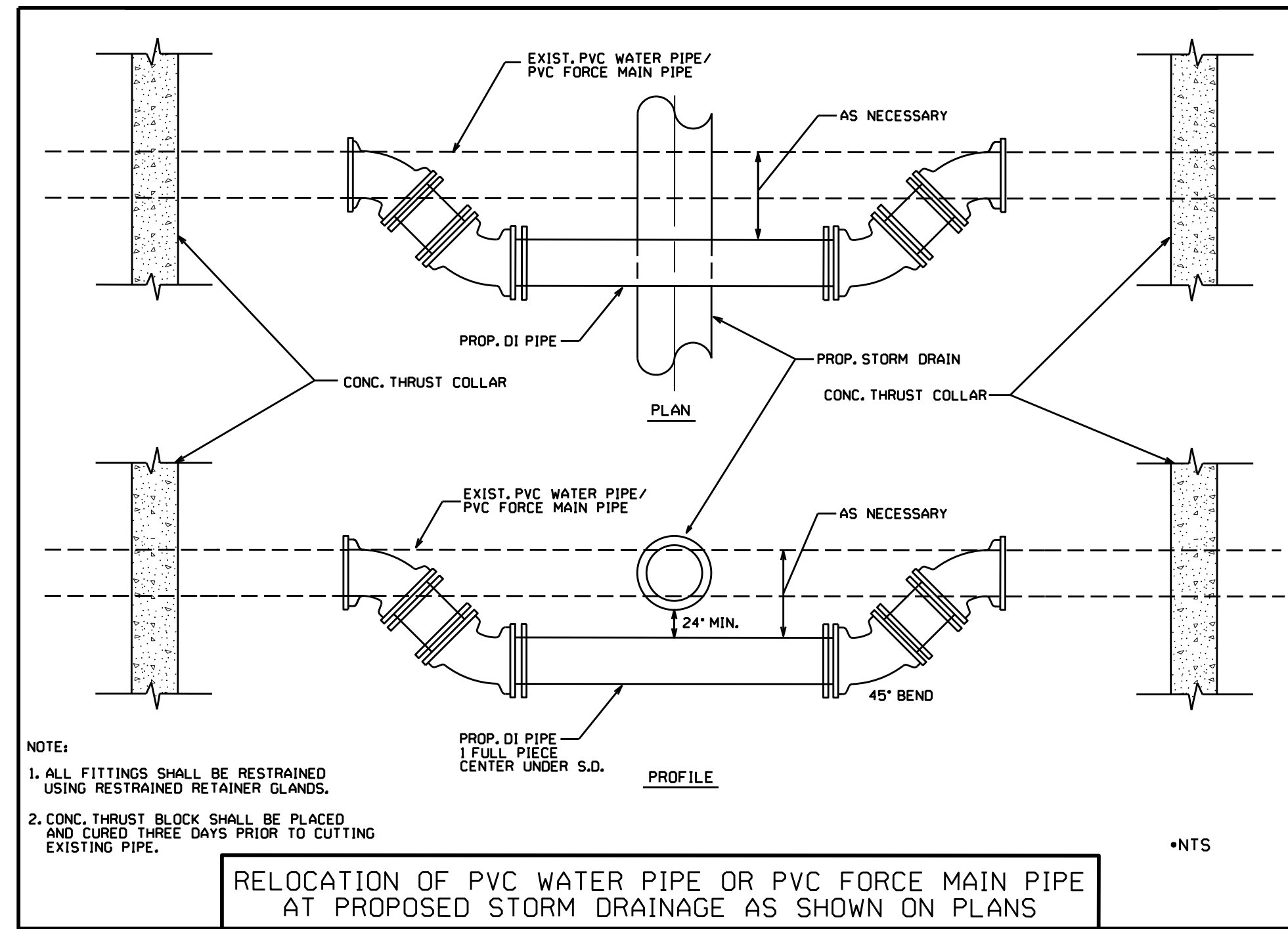
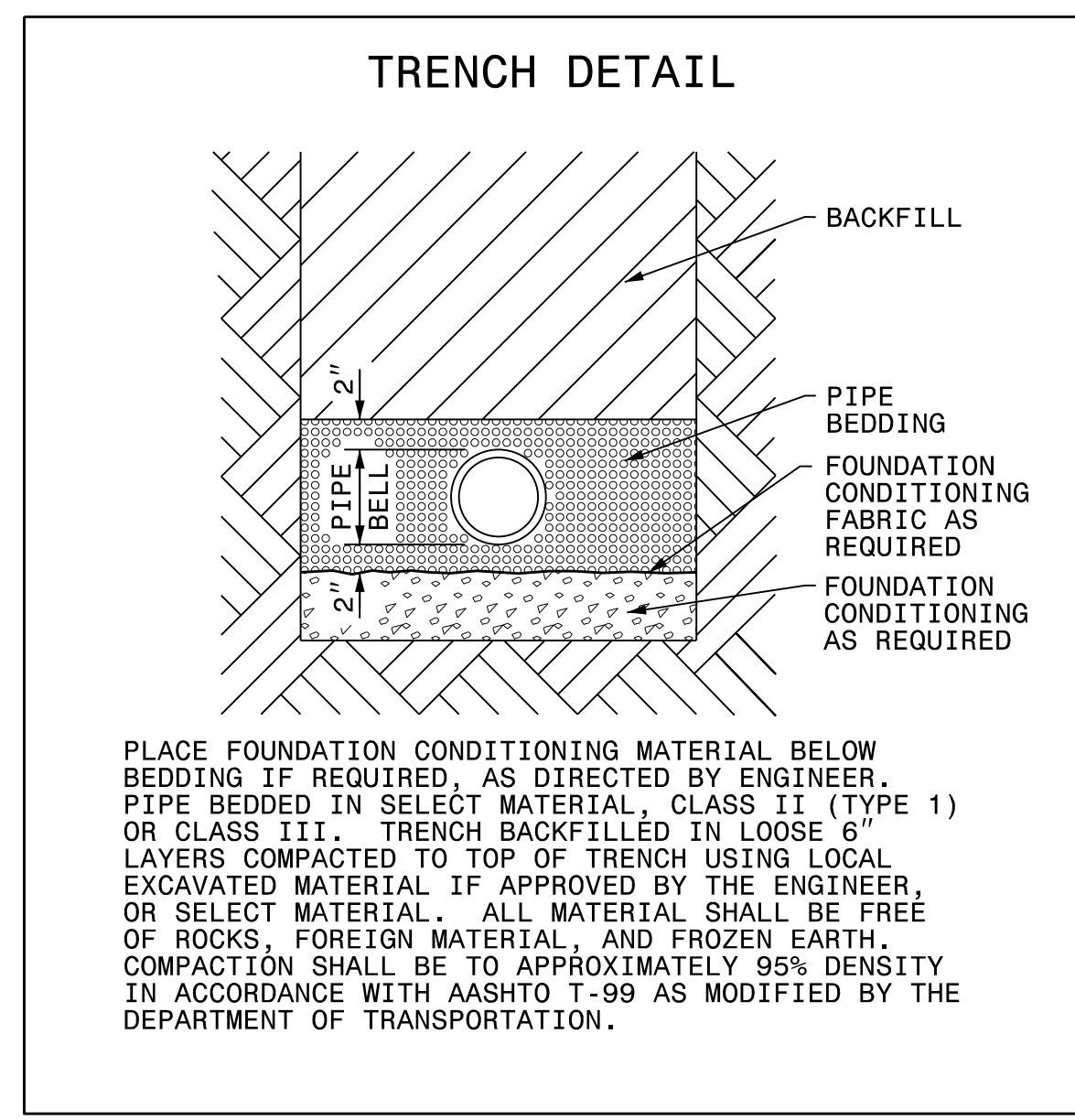
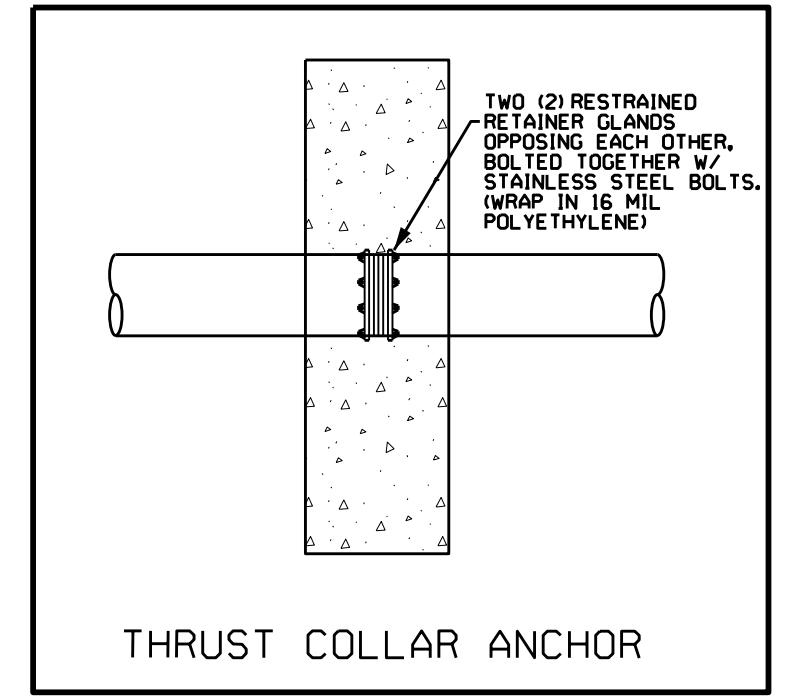
PROJECT TYPICAL DETAILS

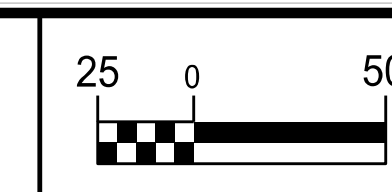
PROJECT REFERENCE NO.	SHEET NO.
U-5925	UC-3A
DESIGNED BY: DMP	
DRAWN BY: DMP	
CHECKED BY: DMP	
APPROVED BY:	
REVISED:	
NORTH CAROLINA DEPARTMENT OF TRANSPORTATION UTILITIES ENGINEERING SEC. PHONE: (919) 707-6690 FAX: (919) 250-4151	
UTILITY CONSTRUCTION PLANS ONLY	

UTILITY CONSTRUCTION

**DOCUMENT NOT CONSIDERED FINAL
UNLESS ALL SIGNATURES COMPLETED**

NOMINAL PIPE SIZE (INCHES)	TRENCH WIDTH (INCHES)	NOMINAL PIPE SIZE (INCHES)	TRENCH WIDTH (INCHES)
4	28	20	44
6	30	24	48
8	32	30	54
10	34	36	60
12	36	42	66
14	38	48	72
16	40	54	78
18	42		

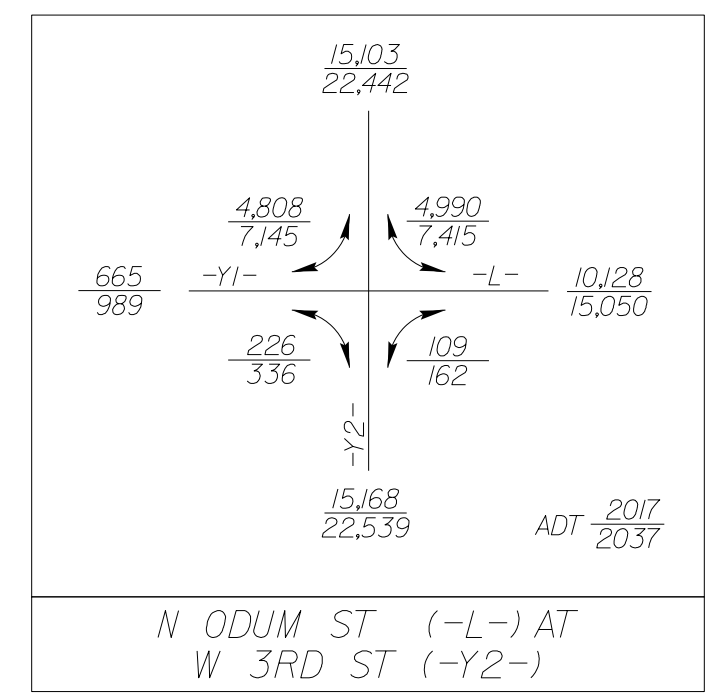




PROJECT REFERENCE NO.	SHEET NO.
U-5925	UC-4
DESIGNED BY: DMP	
DRAWN BY: DMP	
CHECKED BY: DMP	
APPROVED BY:	
REVISED:	
NORTH CAROLINA DEPARTMENT OF TRANSPORTATION UTILITIES ENGINEERING SEC. PHONE: (919) 707-6690 FAX: (919) 250-4151 UTILITY CONSTRUCTION PLANS ONLY	

UTILITY CONSTRUCTION

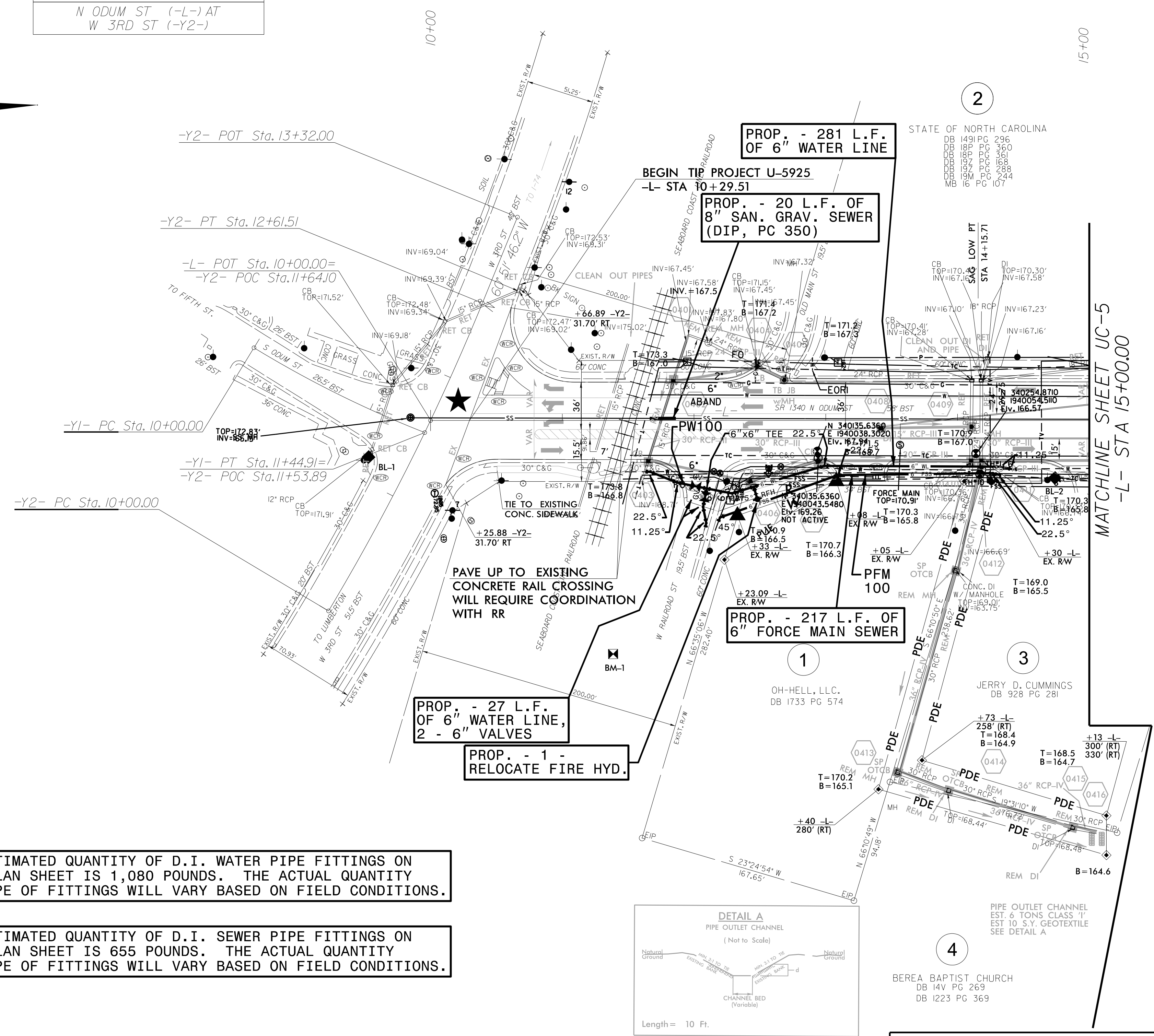
DOCUMENT NOT CONSIDERED FINAL UNLESS ALL SIGNATURES COMPLETED



-Y1-	-Y2-
PI Sta 10+72.64	PI Sta 11+31.01
$\Delta = 10' 03' 49.2''$ (LT)	$\Delta = 8' 41' 10.0''$ (LT)
D = 6' 56' 41.8"	D = 3' 19' 17.4"
L = 144.9'	L = 261.5'
T = 72.64'	T = 131.0'
R = 825.00'	R = 1,725.00'

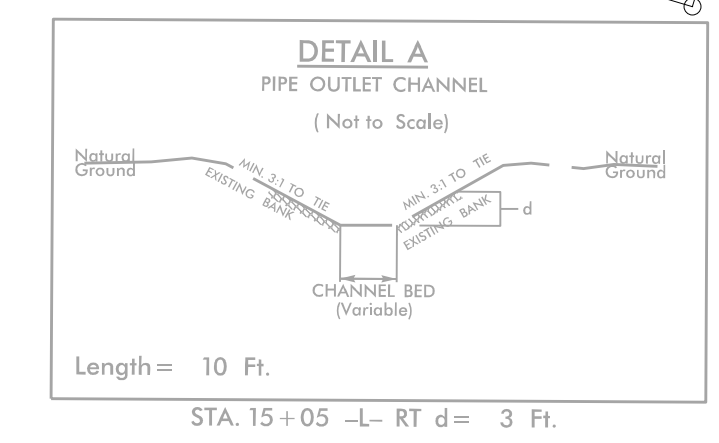
SIGNAL MODIFICATION REQUIRED

NAD 83/2011



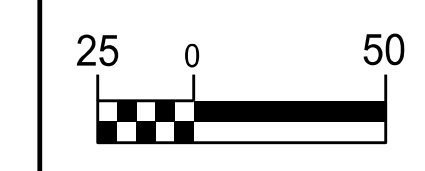
THE ESTIMATED QUANTITY OF D.I. WATER PIPE FITTINGS ON THIS PLAN SHEET IS 1,080 POUNDS. THE ACTUAL QUANTITY AND TYPE OF FITTINGS WILL VARY BASED ON FIELD CONDITIONS.

THE ESTIMATED QUANTITY OF D.I. SEWER PIPE FITTINGS ON THIS PLAN SHEET IS 655 POUNDS. THE ACTUAL QUANTITY AND TYPE OF FITTINGS WILL VARY BASED ON FIELD CONDITIONS.

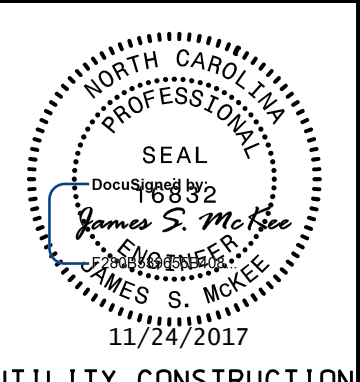


REVISIONS

5/14/99
 1
 2
 3
 4
 5
 6
 7
 8
 9
 10
 11
 12
 13
 14
 15
 16
 17
 18
 19
 20
 21
 22
 23
 24
 25
 26
 27
 28
 29
 30
 31
 32
 33
 34
 35
 36
 37
 38
 39
 40
 41
 42
 43
 44
 45
 46
 47
 48
 49
 50
 51
 52
 53
 54
 55
 56
 57
 58
 59
 60
 61
 62
 63
 64
 65
 66
 67
 68
 69
 70
 71
 72
 73
 74
 75
 76
 77
 78
 79
 80
 81
 82
 83
 84
 85
 86
 87
 88
 89
 90
 91
 92
 93
 94
 95
 96
 97
 98
 99
 100

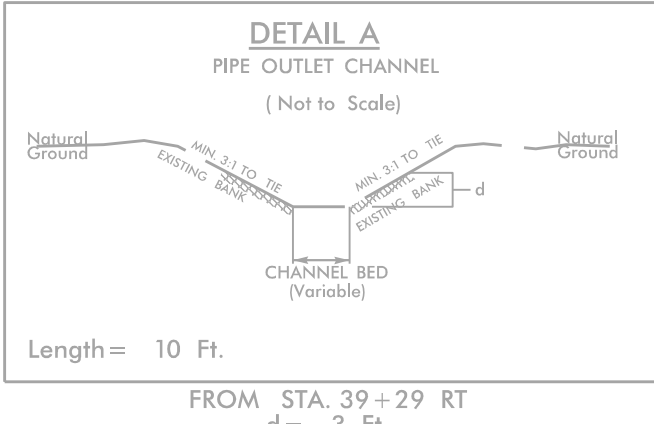
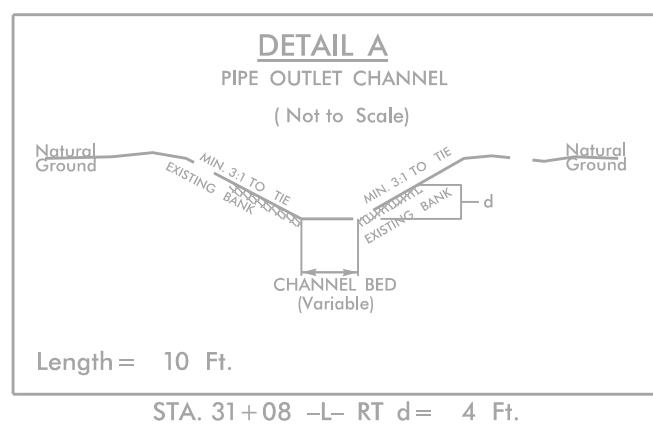
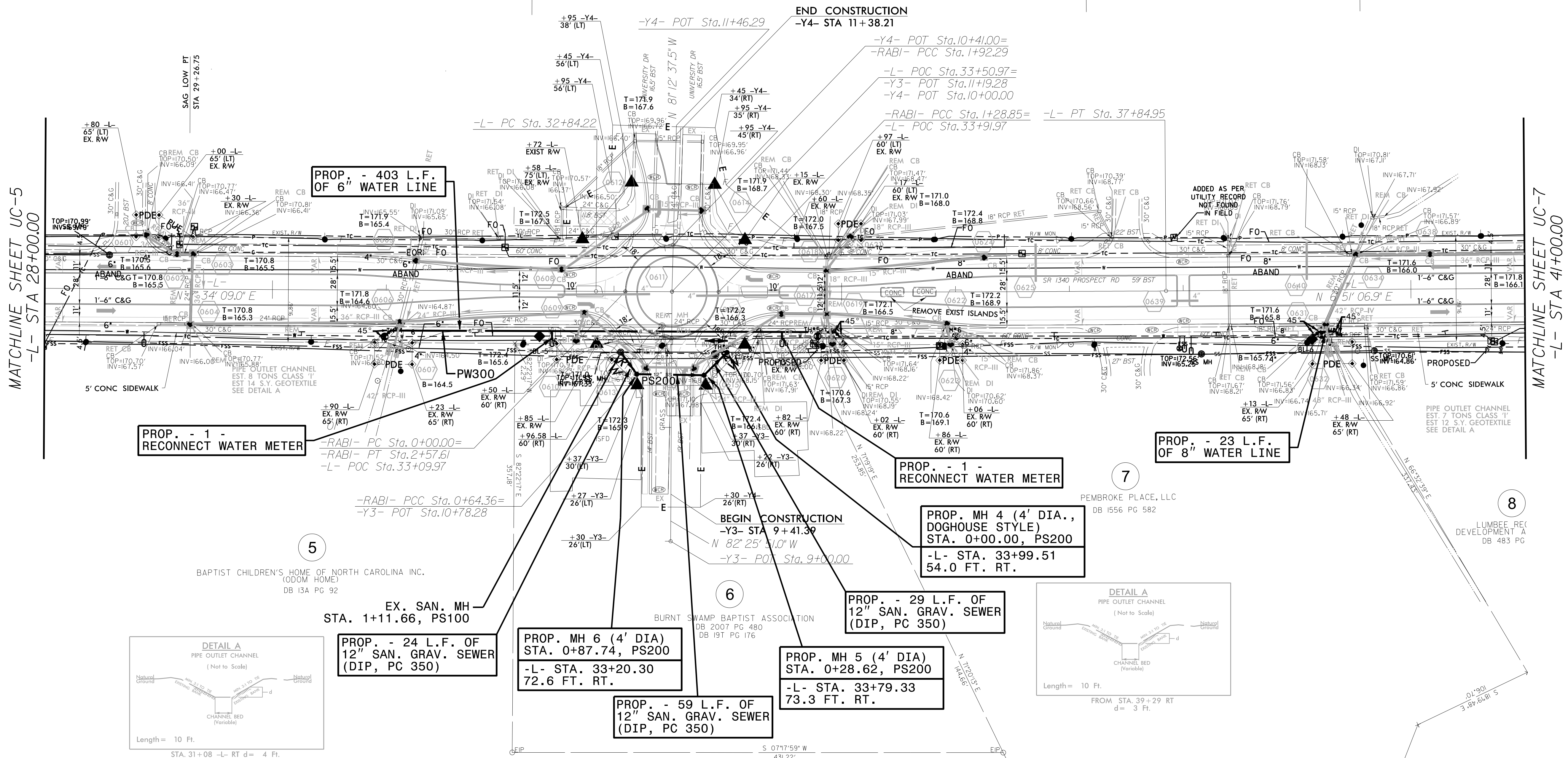
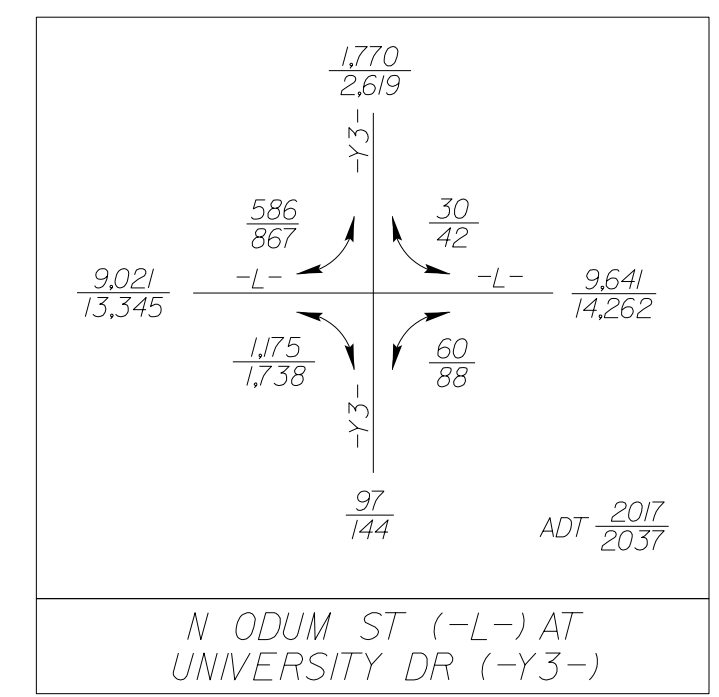


PROJECT REFERENCE NO.	SHEET NO.
U-5925	UC-6
DESIGNED BY: DMP	
DRAWN BY: DMP	
CHECKED BY: DMP	
APPROVED BY:	
REVISED:	
NORTH CAROLINA DEPARTMENT OF TRANSPORTATION	
UTILITIES ENGINEERING SEC. PHONE: (919) 707-6690 FAX: (919) 250-4151	UTILITY CONSTRUCTION PLANS ONLY

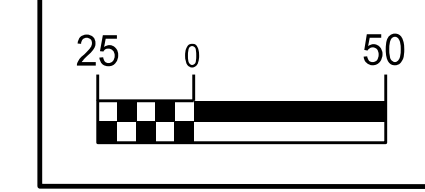


UTILITY CONSTRUCTION
DOCUMENT NOT CONSIDERED FINAL UNLESS ALL SIGNATURES COMPLETED

-RABI-		-L-	
PI Sta 0+40.95	PI Sta 1+05.44	PI Sta 2+34.22	PI Sta 1+68.90
$\Delta = 89^\circ 56' 01.8" (LT)$	$\Delta = 90^\circ 07' 30.2" (LT)$	$\Delta = 91^\circ 17' 11.7" (LT)$	$\Delta = 88^\circ 39' 16.3" (LT)$
$D = 139' 44' 44.9"$	$D = 139' 44' 44.9"$	$D = 139' 44' 44.9"$	$D = 139' 44' 44.9"$
$L = 64.36'$	$L = 64.49'$	$L = 65.32'$	$L = 63.44'$
$T = 40.95'$	$T = 41.09'$	$T = 41.09'$	$T = 40.05'$
$R = 41.00'$	$R = 41.00'$	$R = 41.00'$	$R = 41.00'$



THE ESTIMATED QUANTITY OF D.I. WATER PIPE FITTINGS ON THIS PLAN SHEET IS 1,075 POUNDS. THE ACTUAL QUANTITY AND TYPE OF FITTINGS WILL VARY BASED ON FIELD CONDITIONS.



PROJECT REFERENCE NO.	SHEET NO.
U-5925	UC-7
DESIGNED BY: DMP	
DRAWN BY: DMP	
CHECKED BY: DMP	
APPROVED BY:	
REVISED:	
NORTH CAROLINA DEPARTMENT OF TRANSPORTATION	
UTILITIES ENGINEERING SEC. PHONE: (919) 707-6690 FAX: (919) 250-4151	UTILITY CONSTRUCTION PLANS ONLY

UTILITY CONSTRUCTION

**DOCUMENT NOT CONSIDERED FINAL
UNLESS ALL SIGNATURES COMPLETED**

NAD 83/2011

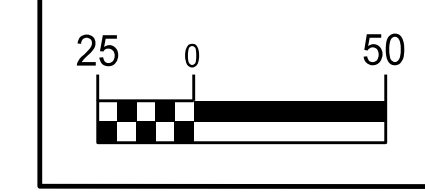
2

STATE OF NORTH CAROLINA

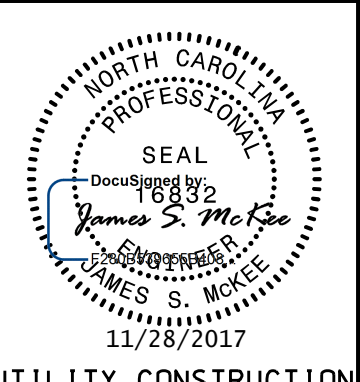
DB	149	PC	296
DB	189	PT	360
DB	190	PC	361
DB	191	PT	362
DB	192	PC	363
DB	193	PT	364
DB	194	PC	365
DB	195	PT	366
DB	196	PC	367
DB	197	PT	368
DB	198	PC	369
DB	199	PT	370
DB	200	PC	371
DB	201	PT	372
DB	202	PC	373
DB	203	PT	374
DB	204	PC	375
DB	205	PT	376
DB	206	PC	377
DB	207	PT	378
DB	208	PC	379
DB	209	PT	380
DB	210	PC	381
DB	211	PT	382
DB	212	PC	383
DB	213	PT	384
DB	214	PC	385
DB	215	PT	386
DB	216	PC	387
DB	217	PT	388
DB	218	PC	389
DB	219	PT	390
DB	220	PC	391
DB	221	PT	392
DB	222	PC	393
DB	223	PT	394
DB	224	PC	395
DB	225	PT	396
DB	226	PC	397
DB	227	PT	398
DB	228	PC	399
DB	229	PT	400
DB	230	PC	401
DB	231	PT	402
DB	232	PC	403
DB	233	PT	404
DB	234	PC	405
DB	235	PT	406
DB	236	PC	407
DB	237	PT	408
DB	238	PC	409
DB	239	PT	410
DB	240	PC	411
DB	241	PT	412
DB	242	PC	413
DB	243	PT	414
DB	244	PC	415
DB	245	PT	416
DB	246	PC	417
DB	247	PT	418
DB	248	PC	419
DB	249	PT	420
DB	250	PC	421
DB	251	PT	422
DB	252	PC	423
DB	253	PT	424
DB	254	PC	425
DB	255	PT	426
DB	256	PC	427
DB	257	PT	428
DB	258	PC	429
DB	259	PT	430
DB	260	PC	431
DB	261	PT	432
DB	262	PC	433
DB	263	PT	434
DB	264	PC	435
DB	265	PT	436
DB	266	PC	437
DB	267	PT	438
DB	268	PC	439
DB	269	PT	440
DB	270	PC	441
DB	271	PT	442
DB	272	PC	443
DB	273	PT	444
DB	274	PC	445
DB	275	PT	446
DB	276	PC	447
DB	277	PT	448
DB	278	PC	449
DB	279	PT	450
DB	280	PC	451
DB	281	PT	452
DB	282	PC	453
DB	283	PT	454
DB	284	PC	455
DB	285	PT	456
DB	286	PC	457
DB	287	PT	458
DB	288	PC	459
DB	289	PT	460
DB	290	PC	461
DB	291	PT	462
DB	292	PC	463
DB	293	PT	464
DB	294	PC	465
DB	295	PT	466
DB	296	PC	467
DB	297	PT	468
DB	298	PC	469
DB	299	PT	470
DB	300	PC	471
DB	301	PT	472
DB	302	PC	473
DB	303	PT	474
DB	304	PC	475
DB	305	PT	476
DB	306	PC	477
DB	307	PT	478
DB	308	PC	479
DB	309	PT	480
DB	310	PC	481
DB	311	PT	482
DB	312	PC	483
DB	313	PT	484
DB	314	PC	485
DB	315	PT	486
DB	316	PC	487
DB	317	PT	488
DB	318	PC	489
DB	319	PT	490
DB	320	PC	491
DB	321	PT	492
DB	322	PC	493
DB	323	PT	494
DB	324	PC	495
DB	325	PT	496
DB	326	PC	497
DB	327	PT	498
DB	328	PC	499
DB	329	PT	500
DB	330	PC	501
DB	331	PT	502
DB	332	PC	503
DB	333	PT	504
DB	334	PC	505
DB	335	PT	506
DB	336	PC	507
DB	337	PT	508
DB	338	PC	509
DB	339	PT	510
DB	340	PC	511
DB	341	PT	512
DB	342	PC	513
DB	343	PT	514
DB	344	PC	515
DB	345	PT	516
DB	346	PC	517
DB	347	PT	518
DB	348	PC	519
DB	349	PT	520
DB	350	PC	521
DB	351	PT	522
DB	352	PC	523
DB	353	PT	524
DB	354	PC	525
DB	355	PT	526
DB	356	PC	527
DB	357	PT	528
DB	358	PC	529
DB	359	PT	530
DB	360	PC	531
DB	361	PT	532
DB	362	PC	533
DB	363	PT	534
DB	364	PC	535
DB	365	PT	536
DB	366	PC	537
DB	367	PT	538
DB	368	PC	539
DB	369	PT	540
DB	370	PC	541
DB	371	PT	542
DB	372	PC	543
DB	373	PT	544
DB	374	PC	545
DB	375	PT	546
DB	376	PC	547
DB	377	PT	548
DB	378	PC	549
DB	379	PT	550
DB	380	PC	551
DB	381	PT	552
DB	382	PC	553
DB	383	PT	554
DB	384	PC	555
DB	385	PT	556
DB	386	PC	557
DB	387	PT	558
DB	388	PC	559
DB	389	PT	560
DB	390	PC	561
DB	391	PT	562
DB	392	PC	563
DB	393	PT	564
DB	394	PC	565
DB	395	PT	566
DB	396	PC	567
DB	397	PT	568
DB	398	PC	569
DB	399	PT	570
DB	400	PC	571
DB	401	PT	572
DB	402	PC	573
DB	403	PT	574
DB	404	PC	575
DB	405	PT	576
DB	406	PC	577
DB	407	PT	578
DB	408	PC	579
DB	409	PT	580
DB	410	PC	581
DB	411	PT	582
DB	412	PC	583
DB	413	PT	584
DB	414	PC	585
DB	415	PT	586
DB	416	PC	587
DB	417	PT	588
DB	418	PC	589
DB	419	PT	590
DB	420	PC	591
DB	421	PT	592
DB	422	PC	593
DB	423	PT	594
DB	424	PC	595
DB	425	PT	596
DB	426	PC	597
DB	427	PT	598
DB	428	PC	599
DB	429	PT	600
DB	430	PC	601
DB	431	PT	602
DB	432	PC	603
DB	433	PT	604
DB	434	PC	605
DB	435	PT	606
DB	436	PC	607
DB	437	PT	608
DB	438	PC	609
DB	439	PT	610
DB	440	PC	611
DB	441	PT	612
DB	442	PC	613
DB	443	PT	614
DB	444	PC	615
DB	445	PT	616
DB	446	PC	617
DB	447	PT	618
DB	448	PC	619
DB	449	PT	620
DB	450	PC	621
DB	451	PT	622
DB	452	PC	623
DB	453	PT	624
DB	454	PC	625
DB	455	PT	626
DB	456	PC	627
DB	457	PT	628
DB	458	PC	629
DB	459	PT	630
DB	460	PC	631
DB	461	PT	632
DB	462	PC	633
DB	463	PT	634
DB	464	PC	635
DB	465	PT	636
DB	466	PC	637
DB	467	PT	638
DB	468	PC	639
DB	469	PT	640
DB	470	PC	641
DB	471	PT	642
DB	472	PC	643
DB	473	PT	644
DB	474	PC	645
DB	475	PT	646
DB	476	PC	647
DB	477	PT	648
DB	478	PC	649
DB	479	PT	650
DB	480	PC	651
DB	481	PT	652
DB	482	PC	653
DB	483	PT	654
DB	484	PC	655
DB	485	PT	656
DB	486	PC	657
DB	487	PT	658
DB	488	PC	659
DB	489	PT	660
DB	490	PC	661
DB	491	PT	662
DB	492	PC	663
DB	493	PT	664
DB	494	PC	665
DB	495	PT	666
DB	496	PC	667
DB	497	PT	668
DB	498	PC	669
DB	499	PT	670
DB	500	PC	671
DB	501	PT	672
DB	502	PC	673
DB	503	PT	674
DB	504	PC	675
DB	505	PT	676
DB	506	PC	677
DB	507	PT	678
DB	508	PC	679
DB	509	PT	680
DB	510	PC	681
DB	511	PT	682
DB	512	PC	683
DB	513	PT	684
DB	514	PC	685
DB	515	PT	686
DB	516	PC	687
DB	517	PT	688
DB	518	PC	689
DB	519	PT	690
DB	520	PC	691
DB	521	PT	692
DB	522	PC	693
DB	523	PT	694
DB	524	PC	695
DB	525	PT	696
DB	526	PC	697
DB	527	PT	698
DB	528	PC	699
DB	529	PT	700
DB	530	PC	701
DB	531	PT	702
DB	532	PC	703
DB	533	PT	704
DB	534	PC	705
DB	535	PT	706
DB	536	PC	707
DB	537	PT	708
DB	538	PC	709
DB	539	PT	710
DB	540	PC	711
DB	541	PT	712
DB	542	PC	713
DB	543	PT	714
DB			

5/14/2017

NAD 83/2011



PROJECT REFERENCE NO.	SHEET NO.
U-5925	UC-8
DESIGNED BY: DMP	
DRAWN BY: DMP	
CHECKED BY: DMP	
APPROVED BY:	
REVISED:	
NORTH CAROLINA DEPARTMENT OF TRANSPORTATION	
UTILITIES ENGINEERING SEC. PHONE: (919) 707-6690 FAX: (919) 250-4151	
UTILITY CONSTRUCTION PLANS ONLY	

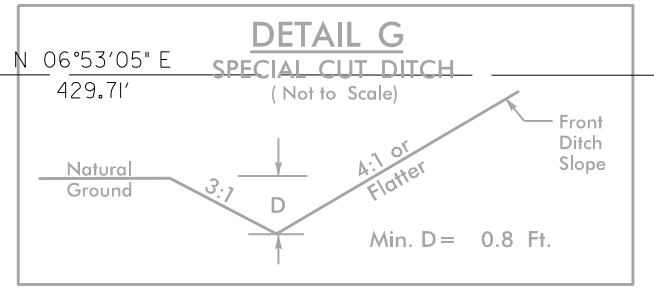
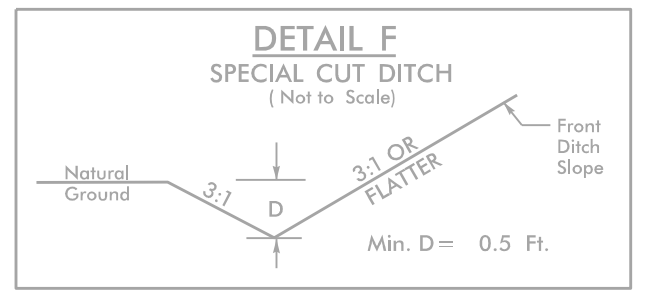
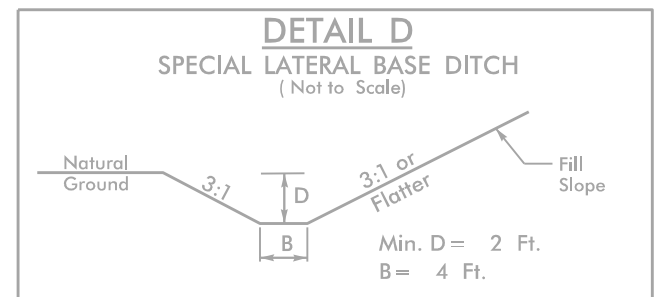
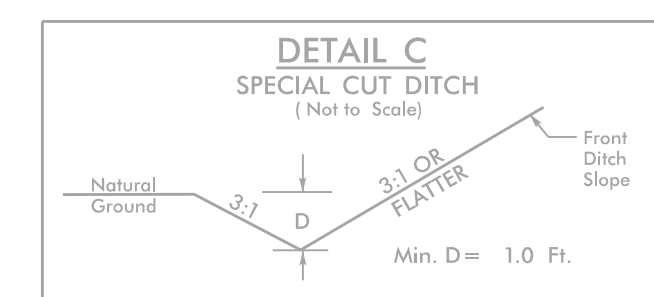
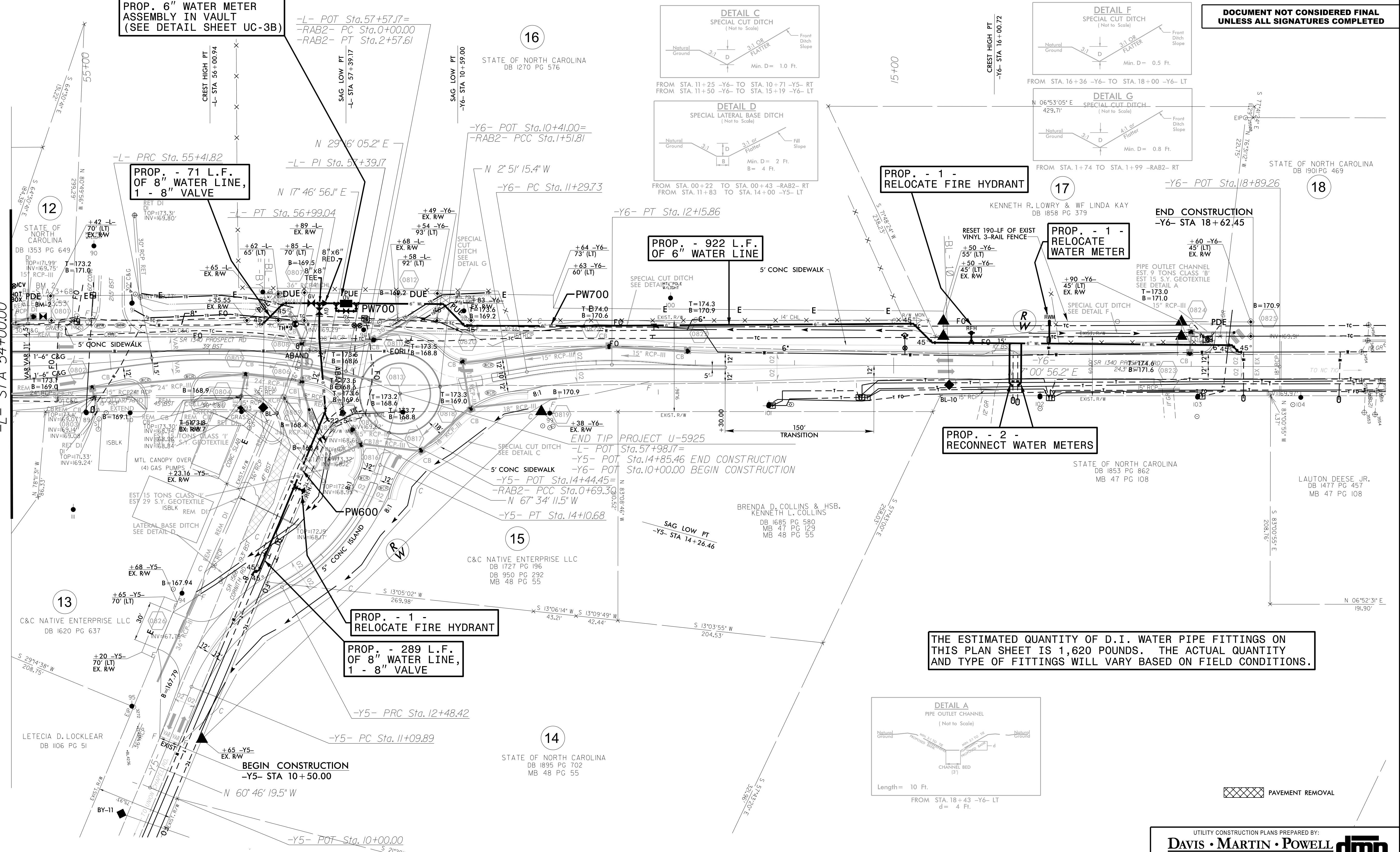


UTILITY CONSTRUCTION

DOCUMENT NOT CONSIDERED FINAL UNLESS ALL SIGNATURES COMPLETED

-L-	-RAB2-	-Y5-	-Y6-
PI Sta 54+70.68 Δ = 6° 40' 20.4" (LT) D = 4' 4" 05.5" L = 142.42' T = 71.23' R = 1,223.00' Se = NC	PI Sta 0+46.22 Δ = 96° 50' 52.5" (LT) D = 139' 44" 44.9" L = 69.30' T = 46.22' R = 41.00'	PI Sta 11+82.07 Δ = 39° 41' 11.9" (RT) D = 28' 38" 52.4" L = 138.53' T = 72.18' R = 200.00' Se = NC	PI Sta 11+72.90 Δ = 9° 52' 11.6" (RT) D = 11' 27" 33.0" L = 86.13' T = 43.17' R = 500.00' Se = NC
PI Sta 56+21.05 Δ = 17° 36' 09.5" (RT) D = 11' 11" 45.8" L = 157.22' T = 79.24' R = 511.75' Se = NC	PI Sta 1+34.03 Δ = 115° 17' 44.4" (LT) D = 139' 44" 44.9" L = 82.50' T = 64.73' R = 41.00'	PI Sta 13+34.32 Δ = 46° 29' 03.9" (LT) D = 28' 38" 52.4" L = 162.26' T = 85.89' R = 200.00' Se = NC	

MATCHLINE SHEET UC-7
-L- STA 54+00.00



PROP. - 1 - RELOCATE FIRE HYDRANT

PROP. - 922 L.F. OF 6" WATER LINE

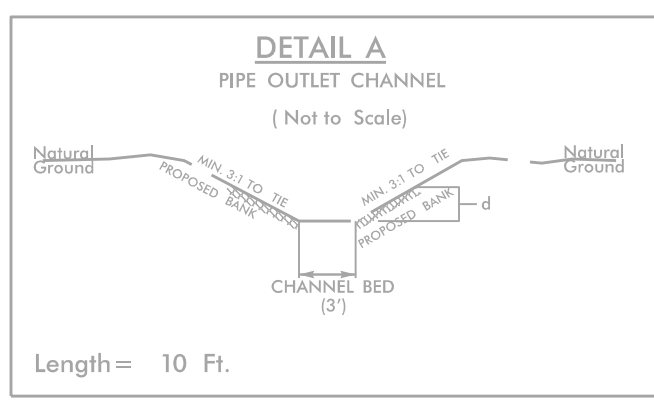
PROP. - 1 - RELOCATE WATER METER

PROP. - 2 - RECONNECT WATER METERS

PROP. - 1 - RELOCATE FIRE HYDRANT

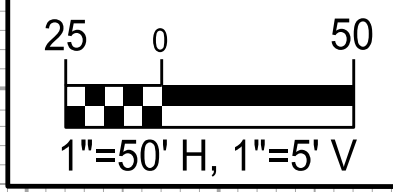
PROP. - 289 L.F. OF 8" WATER LINE, 1 - 8" VALVE

THE ESTIMATED QUANTITY OF D.I. WATER PIPE FITTINGS ON THIS PLAN SHEET IS 1,620 POUNDS. THE ACTUAL QUANTITY AND TYPE OF FITTINGS WILL VARY BASED ON FIELD CONDITIONS.



PAVEMENT REMOVAL

5/14/99



PROJECT REFERENCE NO. U-5925	SHEET NO. UC-10
DESIGNED BY: DMP	
DRAWN BY: DMP	
CHECKED BY: DMP	
APPROVED BY:	
REVISED:	
NORTH CAROLINA DEPARTMENT OF TRANSPORTATION UTILITIES ENGINEERING SEC. PHONE: (919) 707-6690 FAX: (919) 250-4151	

UTILITY CONSTRUCTION

**DOCUMENT NOT CONSIDERED FINAL
UNLESS ALL SIGNATURES COMPLETED**

REVISIONS

