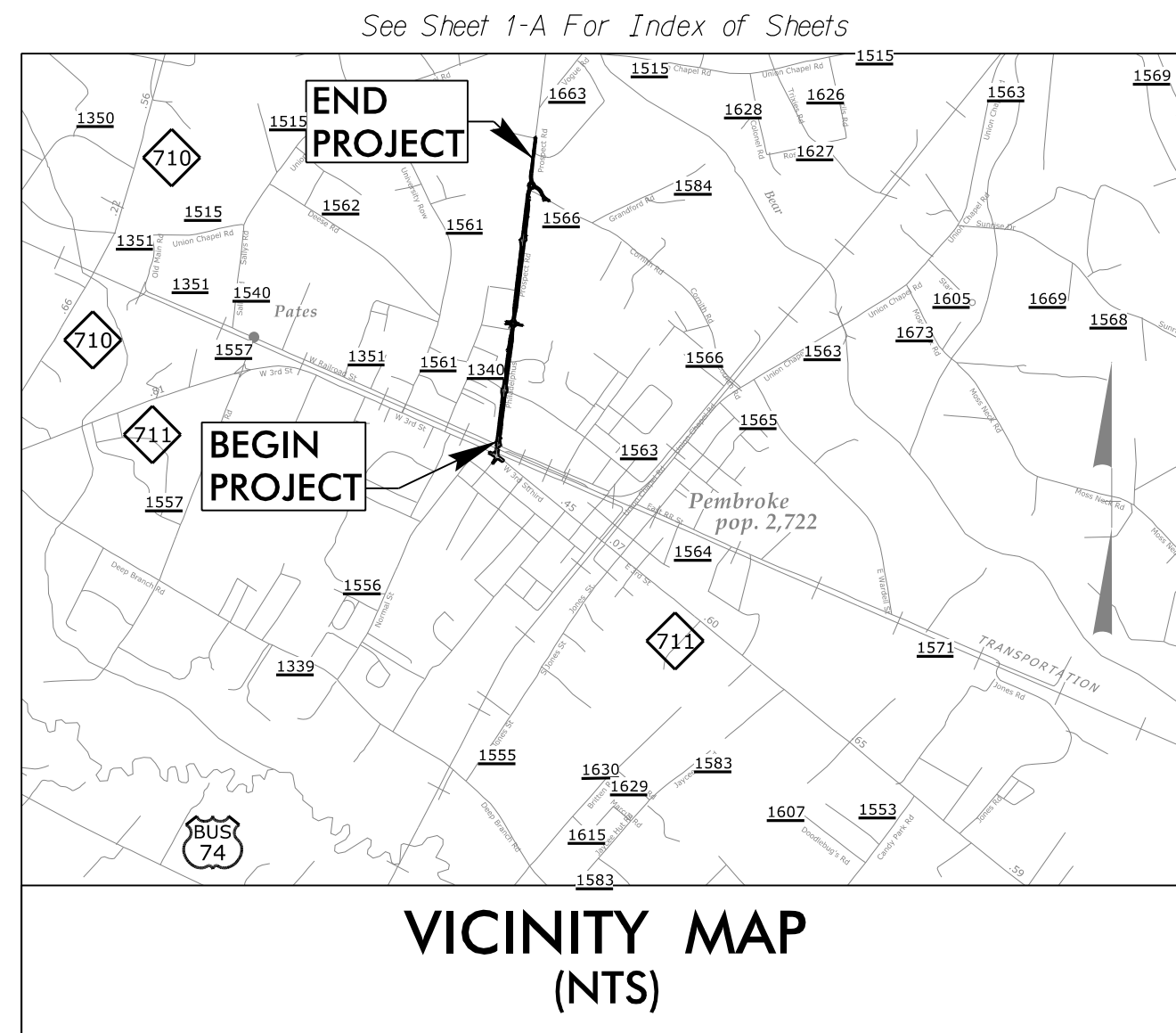


**This electronic collection of documents is provided
for the convenience of the user
and is Not a Certified Document –**

**The documents contained herein were originally issued
and sealed by the individuals whose names and license
numbers appear on each page, on the dates appearing
with their signature on that page.**

**This file or an individual page
shall not be considered a certified document.**

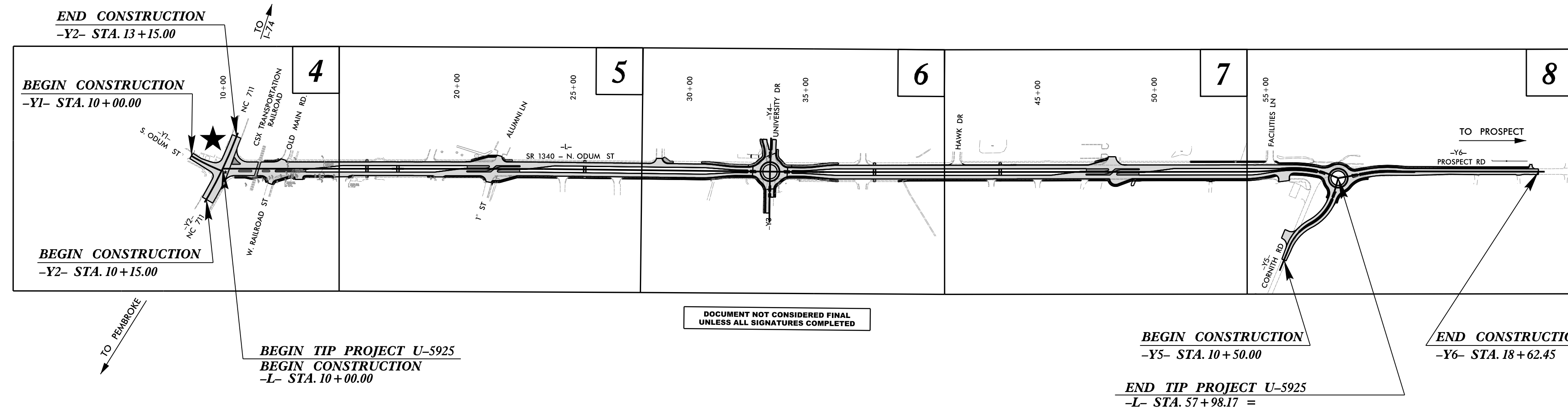
TIP PROJECT: U-5925



STATE OF NORTH CAROLINA
DIVISION OF HIGHWAYS
PLAN FOR PROPOSED
HIGHWAY EROSION CONTROL
ROBESON COUNTY

**LOCATION: SR 1340 (NORTH ODUM STREET /PROSPECT ROAD), FROM
NC 711 (THIRD STREET) TO SR 1566 (CORNITH ROAD)**

TYPE OF WORK: GRADING, DRAINAGE, PAVING, SIGNING, SIGNAL



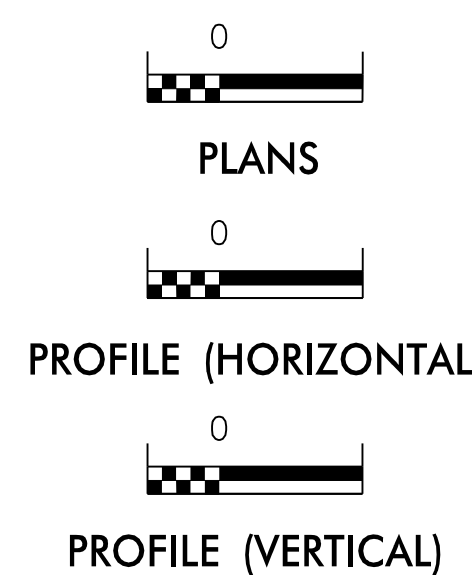
EROSION AND SEDIMENT CONTROL MEASURES

Std. #	Description	Symbol
1630.03	Temporary Silt Ditch	---
1630.05	Temporary Diversion	---
1605.01	Temporary Silt Fence	
1606.01	Special Sediment Control Fence	---X---
1622.01	Temporary Berms and Slope Drains	---X---
1630.02	Silt Basin Type B	---X---
1633.01	Temporary Rock Silt Check Type-A	---X---
	Temporary Rock Silt Check Type-A with Matting and Polyacrylamide (PAM)	---X---
1633.02	Temporary Rock Silt Check Type-B	---X---
	Wattle / Coir Fiber Wattle	---X---
	Wattle / Coir Fiber Wattle with Polyacrylamide (PAM)	---X---
1634.01	Temporary Rock Sediment Dam Type-A	---X---
1634.02	Temporary Rock Sediment Dam Type-B	---X---
1635.01	Rock Pipe Inlet Sediment Trap Type-A	---X---
1635.02	Rock Pipe Inlet Sediment Trap Type-B	---X---
1630.04	Stilling Basin	---X---
1630.06	Special Stilling Basin	---X---
	Rock Inlet Sediment Trap:	
1632.01	Type A	A
1632.02	Type B	B
1632.03	Type C	C
	Skimmer Basin	---X---
	Tiered Skimmer Basin	---X---
	Infiltration Basin	---X---

**THIS PROJECT CONTAINS
EROSION CONTROL PLANS
FOR CLEARING AND
GRUBBING PHASE OF
CONSTRUCTION.**

DIVISION DESIGN CONSTRUCTION - NCDOT DIVISION 6
NCDOT CONTACT: SEAN MATUSZEWSKI

GRAPHIC SCALE



THESE EROSION AND SEDIMENT CONTROL PLANS COMPLY WITH THE REGULATIONS SET FORTH BY THE NCG-010000 GENERAL CONSTRUCTION PERMIT EFFECTIVE AUGUST 1, 2016 AND ISSUED BY THE NORTH CAROLINA DEPARTMENT OF ENVIRONMENT AND NATURAL RESOURCES DIVISION OF WATER RESOURCES.

Prepared in the Office of:

MOFFATT & NICHOL
4700 FALLS OF THE NEUSE ROAD, SUITE 300
RALEIGH, NORTH CAROLINA 27609
(919)781-4626 PHONE (919)781-4869 FAX

Designed by:

JEFFERY RECK, PE #3585
NAME LEVEL III CERTIFICATION NO.

Reviewed in the Office of:

ROADSIDE ENVIRONMENTAL UNIT
1 South Wilmington St.
Raleigh, NC 27601

2012 STANDARD SPECIFICATIONS

Reviewed by:

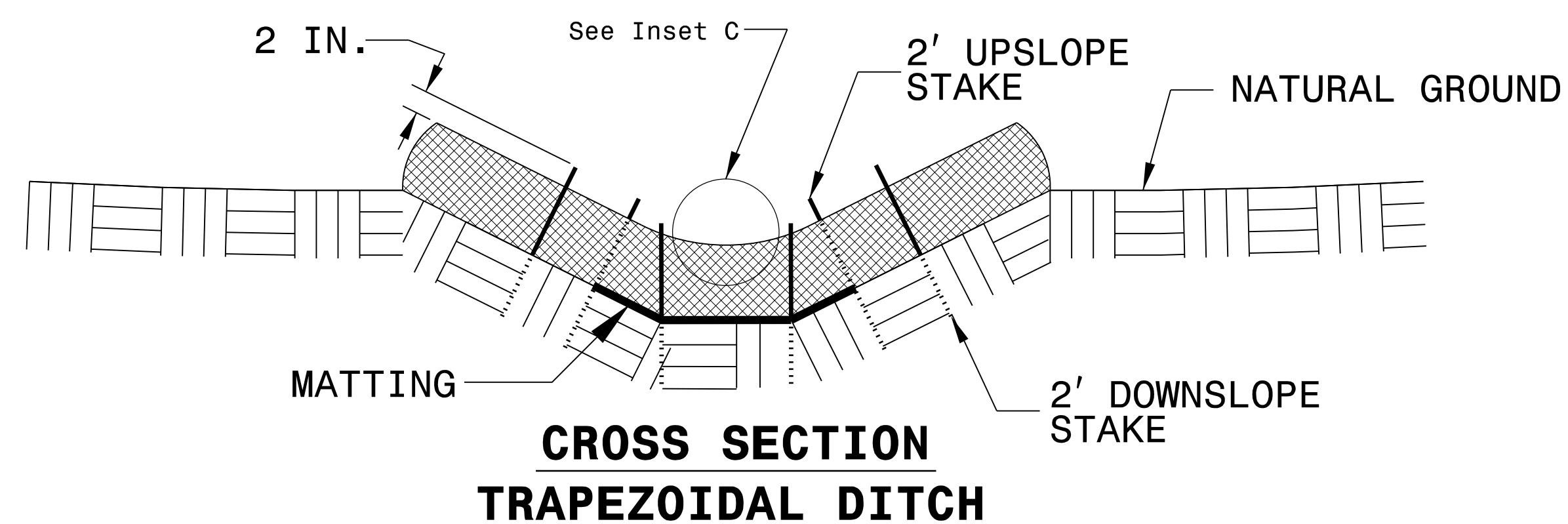
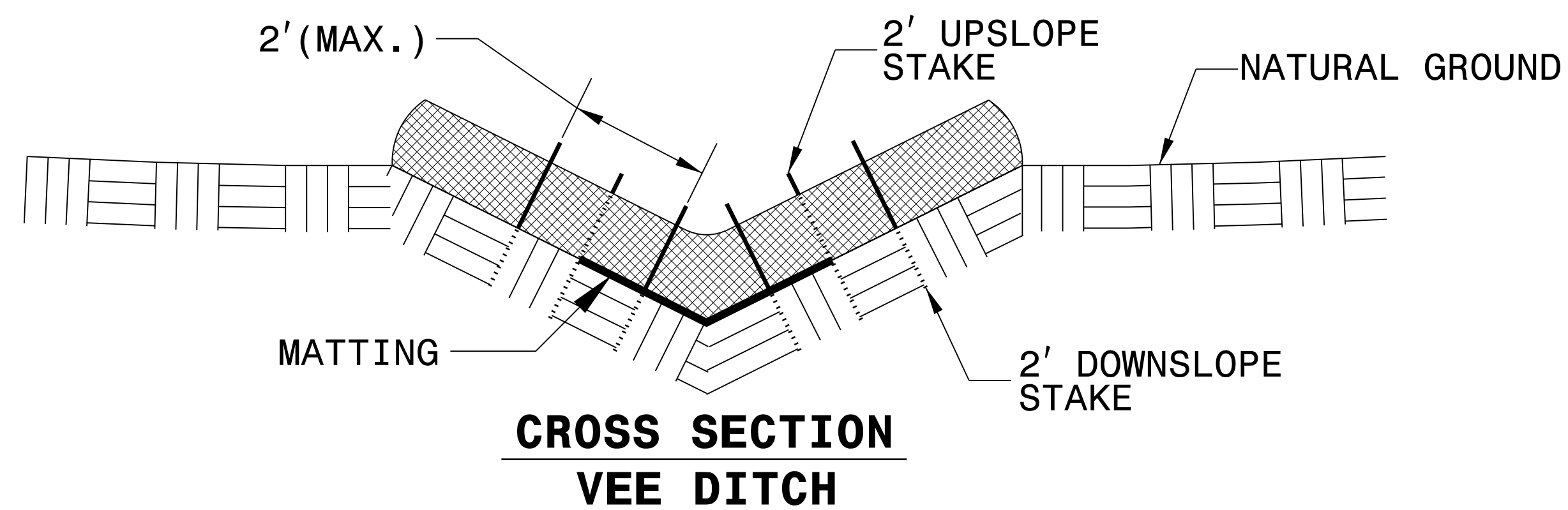
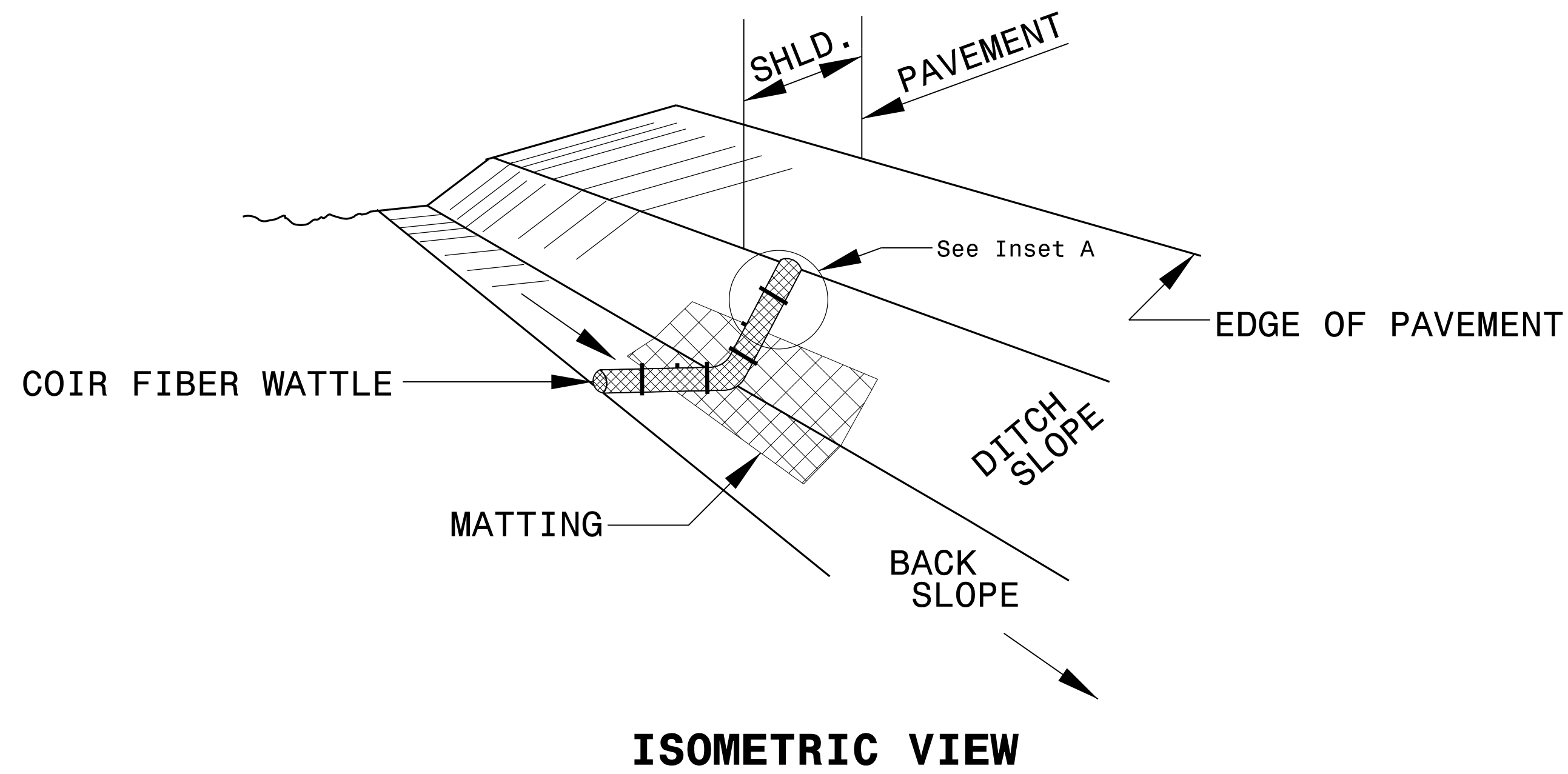
WES CHANDLER, PE

Roadway Standard Drawings

The following roadway english standards as appear in "Roadway Standard Drawings"- Roadway Design Unit - N. C. Department of Transportation - Raleigh, N. C., dated January 2012 and the latest revision thereto are applicable to this project and by reference hereby are considered a part of these plans.

1604.01 Railroad Erosion Control Detail	1632.01 Rock Inlet Sediment Trap Type A
1605.01 Temporary Silt Fence	1632.02 Rock Inlet Sediment Trap Type B
1606.01 Special Sediment Control Fence	1632.03 Rock Inlet Sediment Trap Type C
1607.01 Gravel Construction Entrance	1633.01 Temporary Rock Silt Check Type A
1622.01 Temporary Berms and Slope Drains	1633.02 Temporary Rock Silt Check Type B
1630.01 Riser Basin	1634.01 Temporary Rock Sediment Dam Type A
1630.02 Silt Basin Type B	1634.02 Temporary Rock Sediment Dam Type B
1630.03 Temporary Silt Ditch	1635.01 Rock Pipe Inlet Sediment Trap Type A
1630.04 Stilling Basin	1635.02 Rock Pipe Inlet Sediment Trap Type B
1630.05 Temporary Diversion	1640.01 Coir Fiber Baffle
1630.06 Special Stilling Basin	1645.01 Temporary Stream Crossing
1631.01 Matting Installation	

COIR FIBER WATTLE WITH POLYACRYLAMIDE (PAM) DETAIL



NOTES:

USE MINIMUM 12 IN. DIAMETER COIR FIBER (COCONUT FIBER) WATTLE.

USE 2 FT. WOODEN STAKES WITH A 2 IN. BY 2 IN. NOMINAL CROSS SECTION.

ONLY INSTALL WATTLE(S) TO A HEIGHT IN DITCH SO FLOW WILL NOT WASH AROUND WATTLE AND SCOUR DITCH SLOPES AND AS DIRECTED.

INSTALL A MINIMUM OF 2 UPSLOPE STAKES AND 4 DOWNSLOPE STAKES AT AN ANGLE TO WEDGE WATTLE TO BOTTOM OF DITCH.

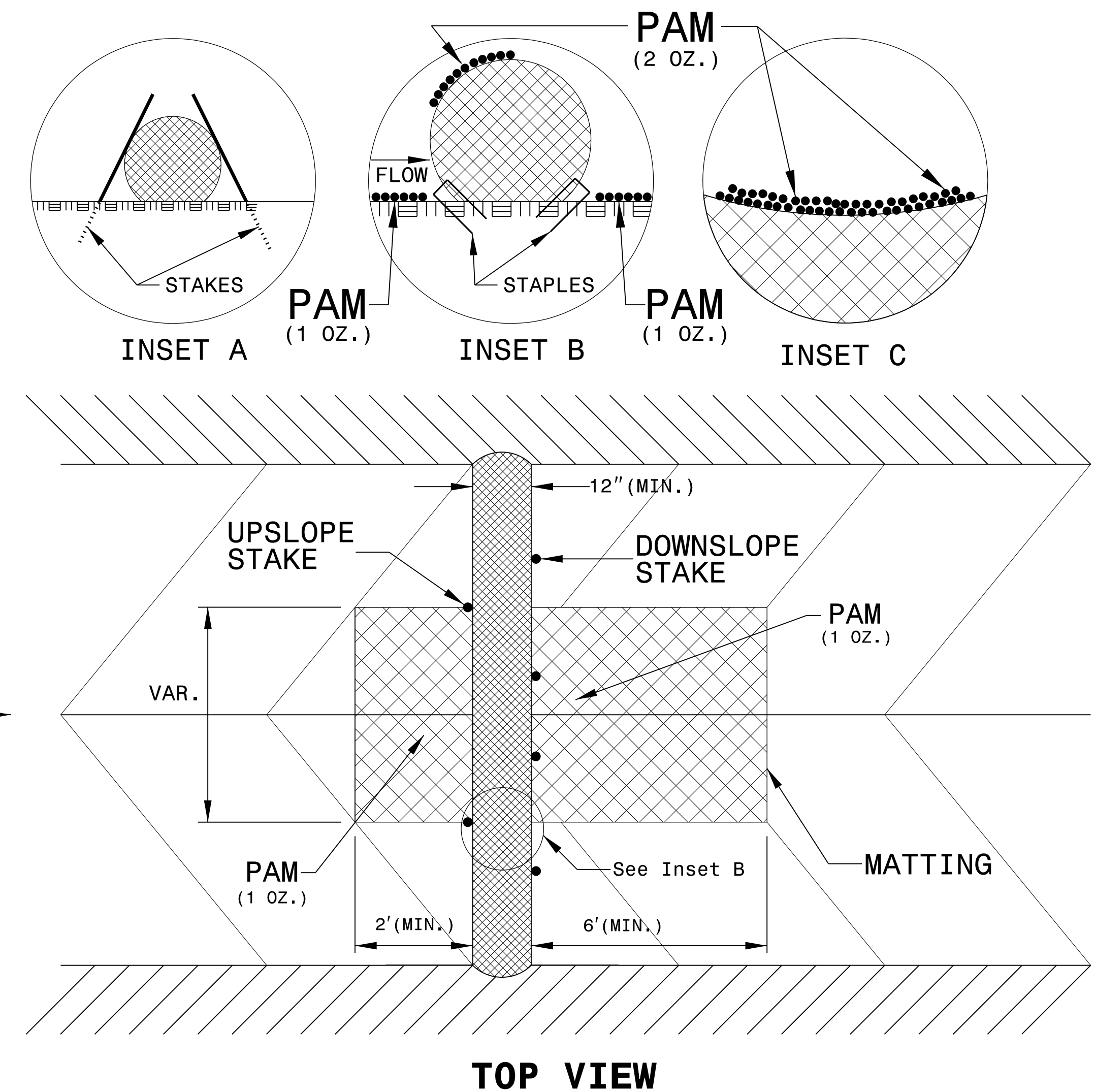
PROVIDE STAPLES MADE OF 0.125 IN. DIAMETER STEEL WIRE FORMED INTO A U SHAPE NOT LESS THAN 12" IN LENGTH.

INSTALL STAPLES APPROXIMATELY EVERY 1 LINEAR FOOT ON BOTH SIDES OF WATTLE AND AT EACH END TO SECURE IT TO THE SOIL.

INSTALL MATTING IN ACCORDANCE WITH SECTION 1631 OF THE STANDARD SPECIFICATIONS.

PRIOR TO POLYACRYLAMIDE (PAM) APPLICATION, OBTAIN A SOIL SAMPLE FROM PROJECT LOCATION, AND FROM OFFSITE MATERIAL, AND ANALYZE FOR APPROPRIATE PAM FLOCCULANT TO BE APPLIED TO EACH WATTLE.

INITIALLY APPLY 2 OUNCES OF ANIONIC OR NEUTRALLY CHARGED PAM OVER WATTLE WHERE WATER WILL FLOW AND 1 OUNCE OF PAM ON MATTING ON EACH SIDE OF WATTLE. REAPPLY PAM AFTER EVERY RAINFALL EVENT THAT IS EQUAL TO OR EXCEEDS 0.50 IN.



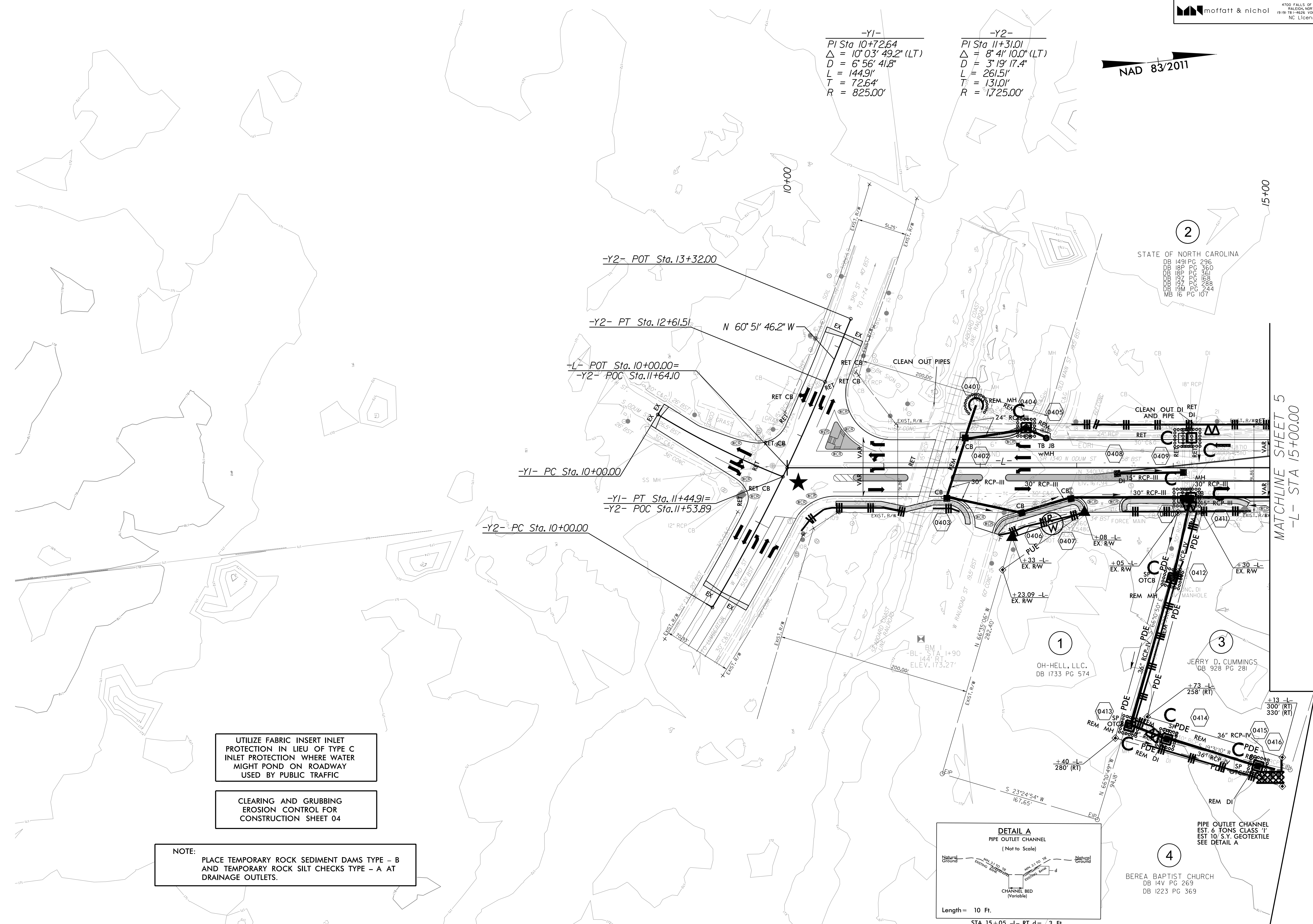
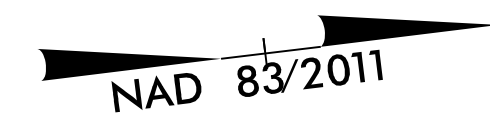
DIVISION OF HIGHWAYS
STATE OF NORTH CAROLINA

SOIL STABILIZATION TIMEFRAMES

<i>SITE DESCRIPTION</i>	<i>STABILIZATION TIME</i>	<i>TIMEFRAME EXCEPTIONS</i>
PERIMETER DIKES, SWALES, DITCHES AND SLOPES	7 DAYS	NONE
HIGH QUALITY WATER (HQW) ZONES	7 DAYS	NONE
SLOPES STEEPER THAN 3:1	7 DAYS	IF SLOPES ARE 10' OR LESS IN LENGTH AND ARE NOT STEEPER THAN 2:1, 14 DAYS ARE ALLOWED.
SLOPES 3:1 OR FLATTER	14 DAYS	7 DAYS FOR SLOPES GREATER THAN 50' IN LENGTH.
ALL OTHER AREAS WITH SLOPES FLATTER THAN 4:1	14 DAYS	NONE, EXCEPT FOR PERIMETERS AND HQW ZONES.

-Y1-
 PI Sta 10+72.64
 $\Delta = 10' 03" 49.2" (LT)$
 $D = 6' 56" 41.8"$
 $L = 144.9'$
 $T = 72.64'$
 $R = 825.00'$

-Y2-
 PI Sta 11+31.01
 $\Delta = 8' 41" 10.0" (LT)$
 $D = 3' 19" 17.4"$
 $L = 261.5'$
 $T = 131.0'$
 $R = 1725.00'$



2
STATE OF NORTH CAROLINA
DB 1491 PG 296
DB 1887 PG 360
DB 2052 PG 361
DB 2052 PG 368
DB 2052 PG 368
DB 2052 PG 368
DB 2052 PG 368
DB 2052 PG 368
DB 2052 PG 368

1
OH-HELL, LLC.
DB 1733 PG 574

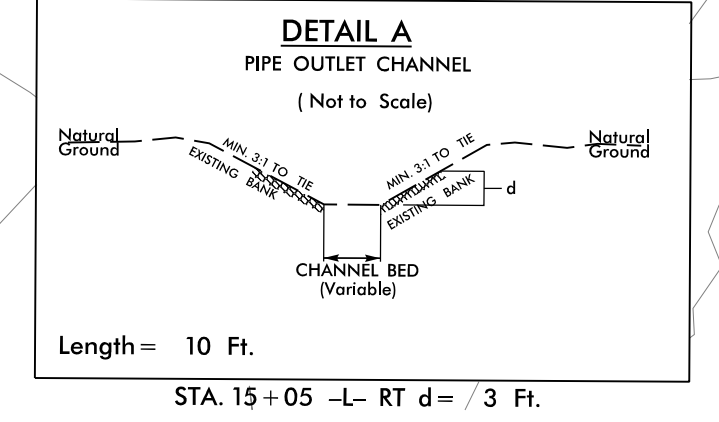
3
JERRY D. CUMMINGS
DB 928 PG 281

4
BEREA BAPTIST CHURCH
DB 14V PG 269
DB 1223 PG 369

UTILIZE FABRIC INSERT INLET PROTECTION IN LIEU OF TYPE C INLET PROTECTION WHERE WATER MIGHT POND ON ROADWAY USED BY PUBLIC TRAFFIC

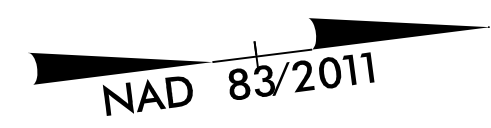
CLEARING AND GRUBBING EROSION CONTROL FOR CONSTRUCTION SHEET 04

NOTE: PLACE TEMPORARY ROCK SEDIMENT DAMS TYPE - B AND TEMPORARY ROCK SILT CHECKS TYPE - A AT DRAINAGE OUTLETS.



MATCHLINE SHEET 5
-L- STA 15+00.00

-L-
 PI Sta 23+24.87
 $\Delta = 0^{\circ} 37' 59.0'' (RT)$
 $D = 0^{\circ} 34' 22.6''$
 $L = 110.49'$
 $T = 55.25'$
 $R = 10,000.00'$
 $Se = NC$



2

STATE OF NORTH CAROLINA

DB	1491	PC	296
DB	1492	PC	360
DB	1493	PC	361
DB	1494	PC	362
DB	1495	PC	363
DB	1496	PC	364
DB	1497	PC	365
DB	1498	PC	366
DB	1499	PC	367
DB	1500	PC	368
DB	1501	PC	369
DB	1502	PC	370
DB	1503	PC	371
DB	1504	PC	372
DB	1505	PC	373
DB	1506	PC	374
DB	1507	PC	375

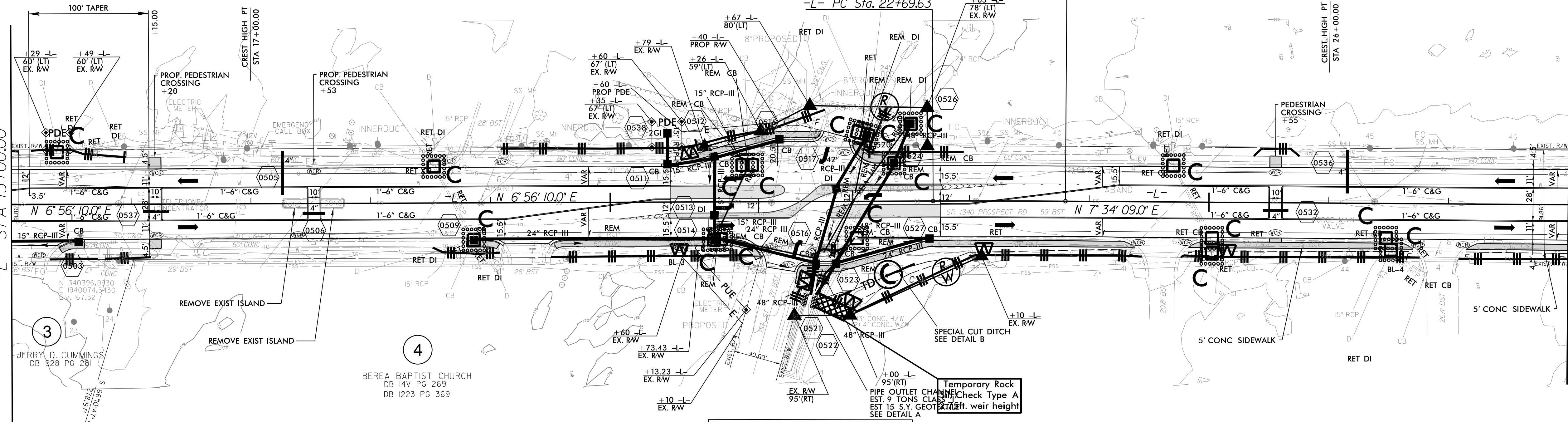
15+00

20+00

25+00

MATCHLINE SHEET 4
 -L- STA 15+00.00

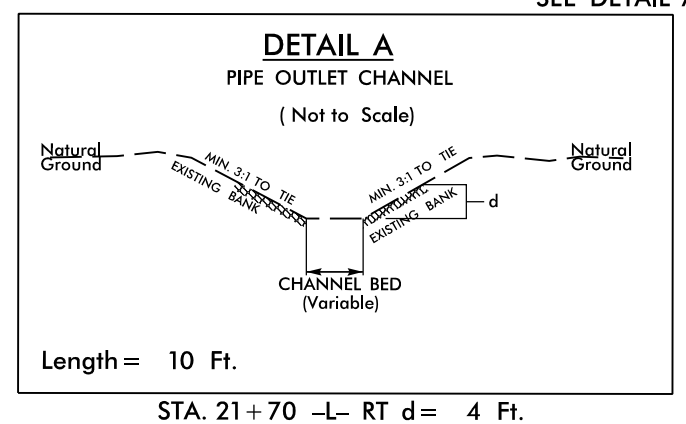
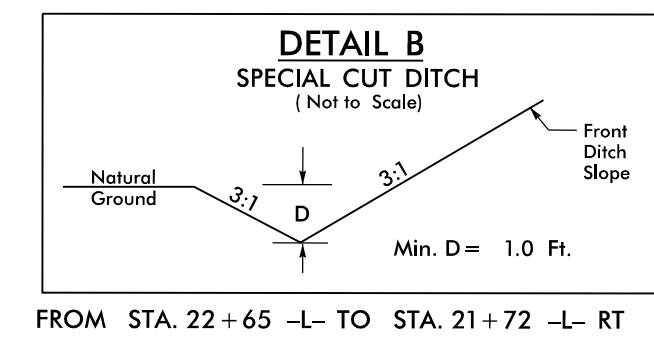
MATCHLINE SHEET 6
 -L- STA 28+00.00



3
 JERRY D. CUMMINGS
 DB 928 PG 281

4
 BEREA BAPTIST CHURCH
 DB 14V PG 269
 DB 1223 PG 369

5
 BAPTIST CHILDREN'S HOME OF NORTH CAROLINA INC.
 (ODOM HOME)
 DB 13A PG 92



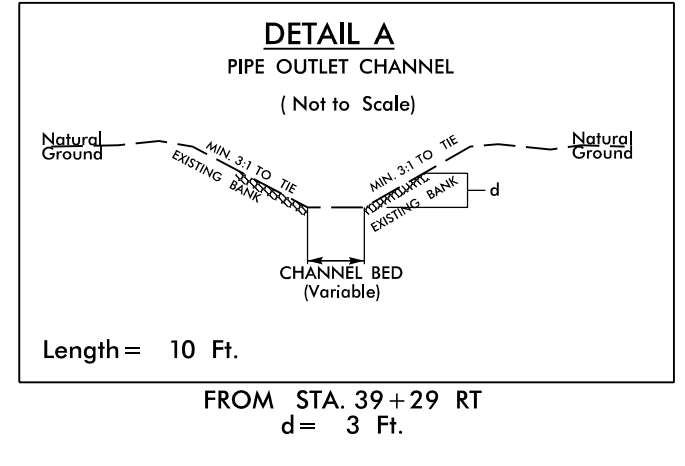
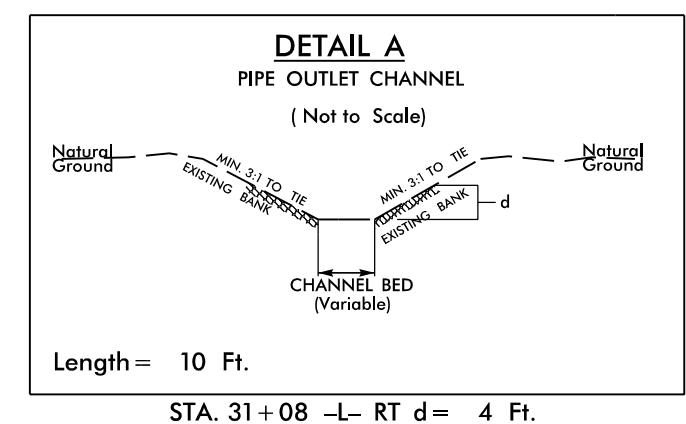
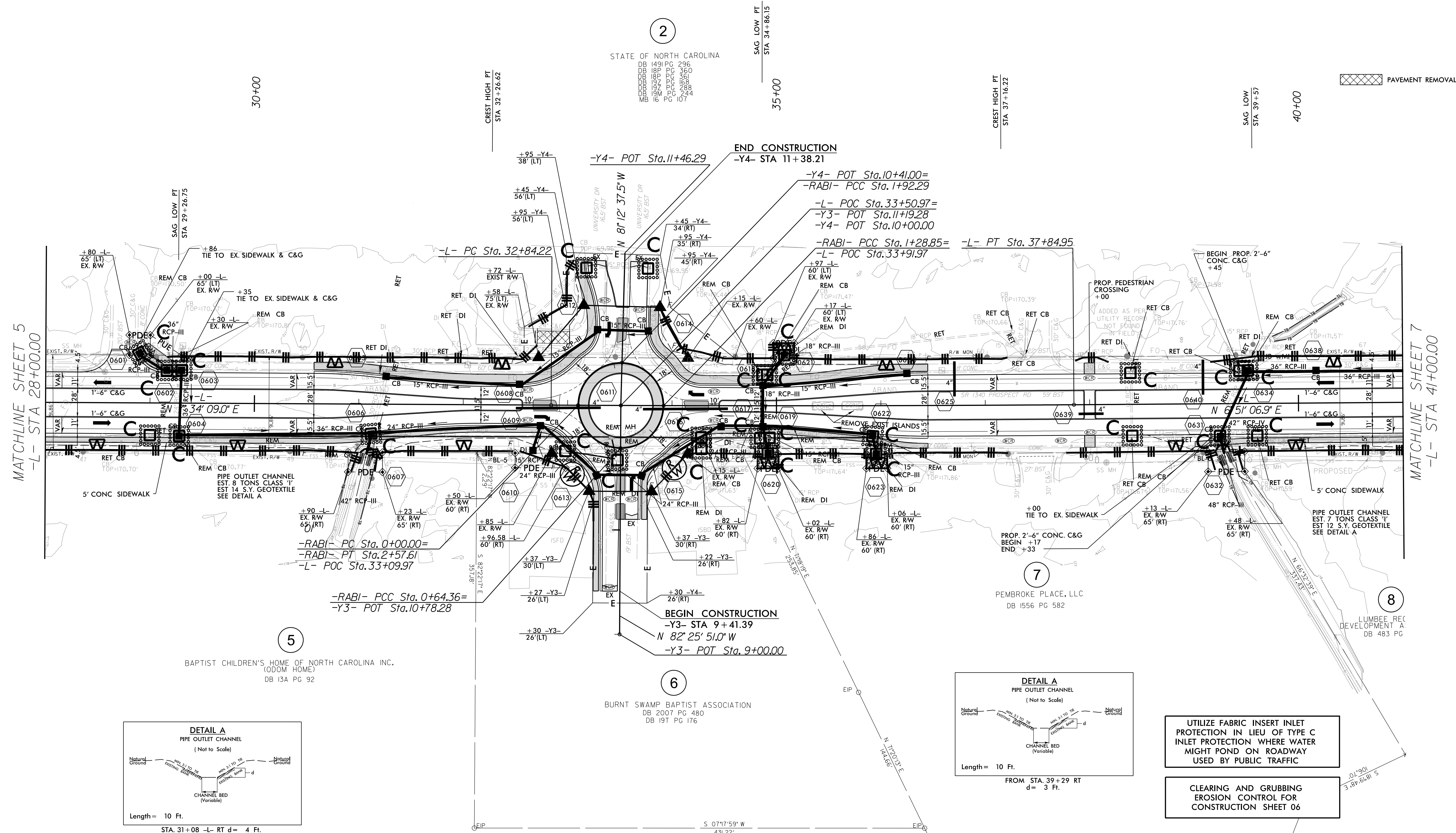
UTILIZE FABRIC INSERT INLET PROTECTION IN LIEU OF TYPE C INLET PROTECTION WHERE WATER MIGHT POND ON ROADWAY USED BY PUBLIC TRAFFIC

CLEARING AND GRUBBING EROSION CONTROL FOR CONSTRUCTION SHEET 05

NOTE:
 PLACE TEMPORARY ROCK SEDIMENT DAMS TYPE - B AND TEMPORARY ROCK SILT CHECKS TYPE - A AT DRAINAGE OUTLETS.

5/14/99
 9292-01\CADD\10525\Roads\ide\PSH\U5925_REU_psh_05.dgn
 1/17/07

NAD 83/2011



UTILIZE FABRIC INSERT INLET PROTECTION IN LIEU OF TYPE C INLET PROTECTION WHERE WATER MIGHT POND ON ROADWAY USED BY PUBLIC TRAFFIC

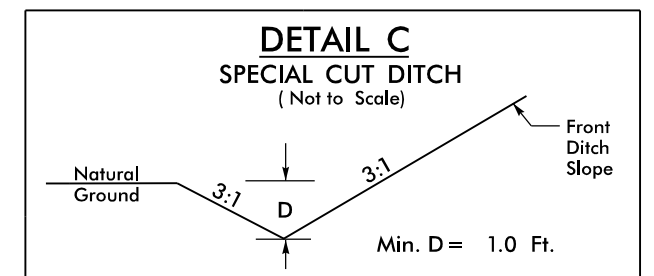
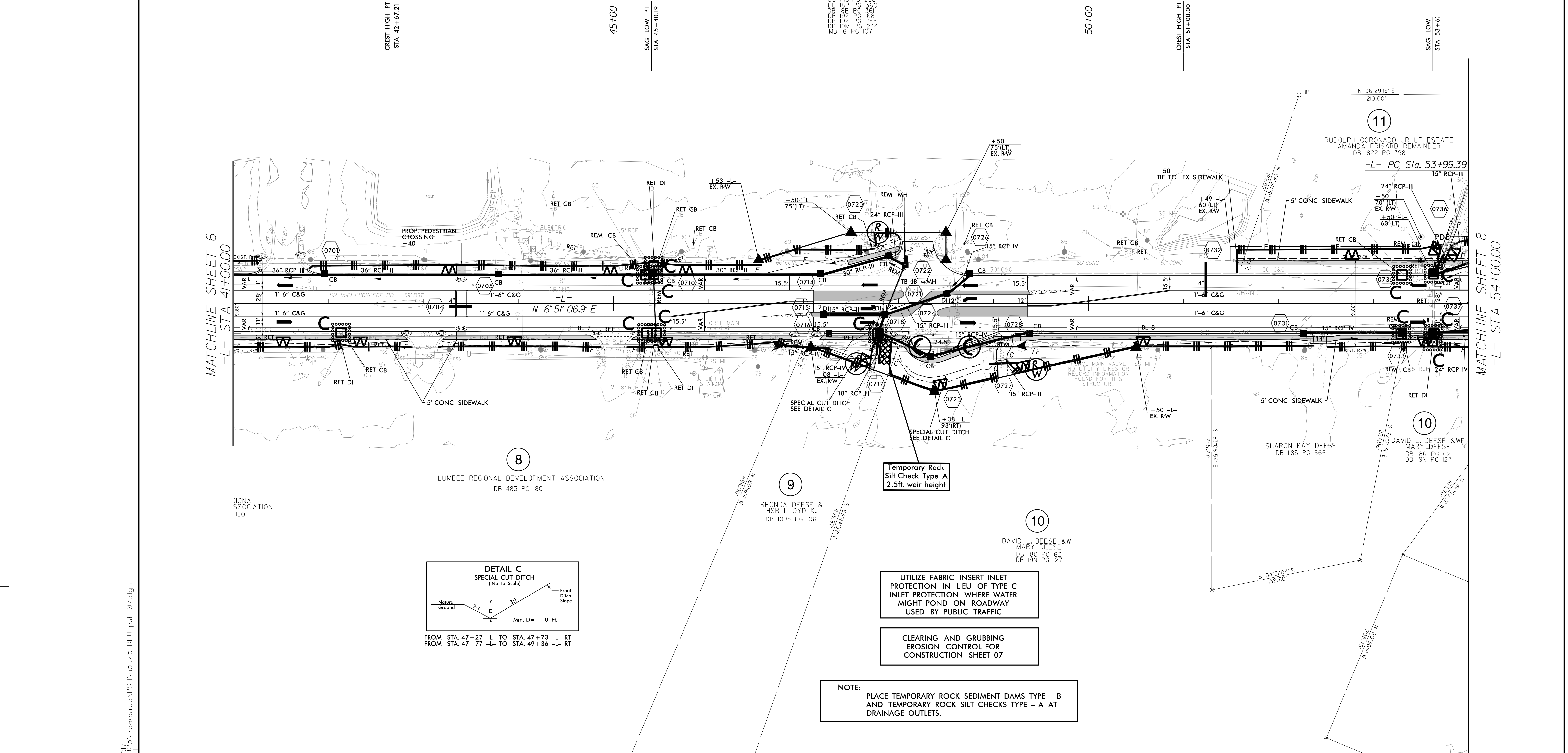
CLEARING AND GRUBBING EROSION CONTROL FOR CONSTRUCTION SHEET 06

NOTE:
PLACE TEMPORARY ROCK SEDIMENT DAMS TYPE - B AND TEMPORARY ROCK SILT CHECKS TYPE - A AT DRAINAGE OUTLETS.

5/14/09
5/17/2017
-01\CADD\05925\Roadside\PSH\05925_REU_psh_06.dgn

NAD 83/2011

2				
STATE OF NORTH CAROLINA				
DB	1491	PG	296	
DB	188	PG	360	
DB	192	PG	361	
DB	193	PG	368	
DB	194	PG	369	
DB	195	PG	370	
DB	196	PG	371	
DB	197	PG	372	
DB	198	PG	373	
DB	199	PG	374	
DB	200	PG	375	
DB	201	PG	376	
DB	202	PG	377	
DB	203	PG	378	
DB	204	PG	379	
DB	205	PG	380	
DB	206	PG	381	
DB	207	PG	382	
DB	208	PG	383	
DB	209	PG	384	
DB	210	PG	385	
DB	211	PG	386	
DB	212	PG	387	
DB	213	PG	388	
DB	214	PG	389	
DB	215	PG	390	
DB	216	PG	391	
DB	217	PG	392	
DB	218	PG	393	
DB	219	PG	394	
DB	220	PG	395	
DB	221	PG	396	
DB	222	PG	397	
DB	223	PG	398	
DB	224	PG	399	
DB	225	PG	400	
DB	226	PG	401	
DB	227	PG	402	
DB	228	PG	403	
DB	229	PG	404	
DB	230	PG	405	
DB	231	PG	406	
DB	232	PG	407	
DB	233	PG	408	
DB	234	PG	409	
DB	235	PG	410	
DB	236	PG	411	
DB	237	PG	412	
DB	238	PG	413	
DB	239	PG	414	
DB	240	PG	415	
DB	241	PG	416	
DB	242	PG	417	
DB	243	PG	418	
DB	244	PG	419	
DB	245	PG	420	
DB	246	PG	421	
DB	247	PG	422	
DB	248	PG	423	
DB	249	PG	424	
DB	250	PG	425	
DB	251	PG	426	
DB	252	PG	427	
DB	253	PG	428	
DB	254	PG	429	
DB	255	PG	430	
DB	256	PG	431	
DB	257	PG	432	
DB	258	PG	433	
DB	259	PG	434	
DB	260	PG	435	
DB	261	PG	436	
DB	262	PG	437	
DB	263	PG	438	
DB	264	PG	439	
DB	265	PG	440	
DB	266	PG	441	
DB	267	PG	442	
DB	268	PG	443	
DB	269	PG	444	
DB	270	PG	445	
DB	271	PG	446	
DB	272	PG	447	
DB	273	PG	448	
DB	274	PG	449	
DB	275	PG	450	



FROM STA. 47+27 -L- TO STA. 47+73 -L- RT
FROM STA. 47+77 -L- TO STA. 49+36 -L- RT

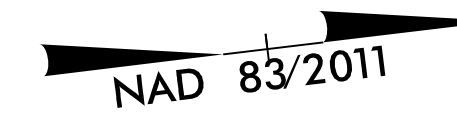
**Temporary Rock Silt Check Type A
2.5ft. weir height**

UTILIZE FABRIC INSERT INLET PROTECTION IN LIEU OF TYPE C INLET PROTECTION WHERE WATER MIGHT POND ON ROADWAY USED BY PUBLIC TRAFFIC

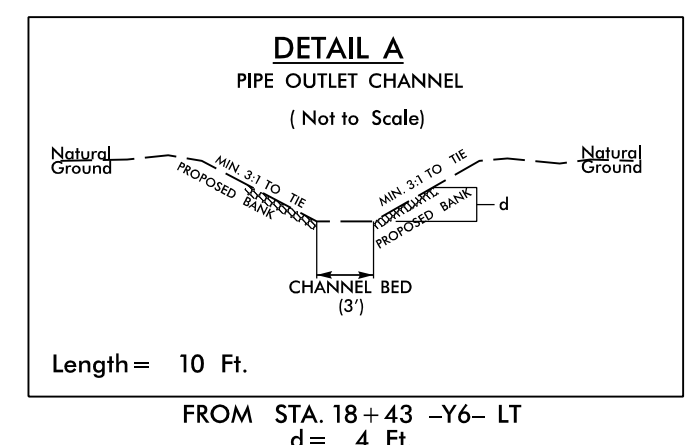
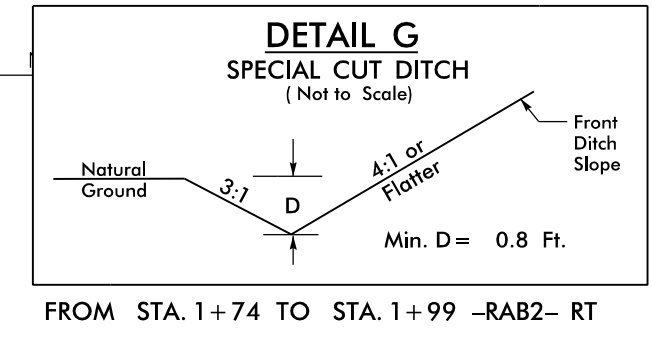
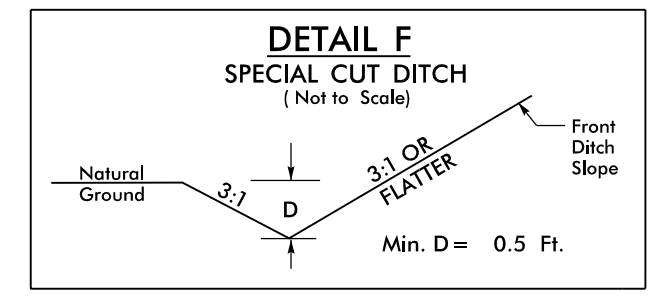
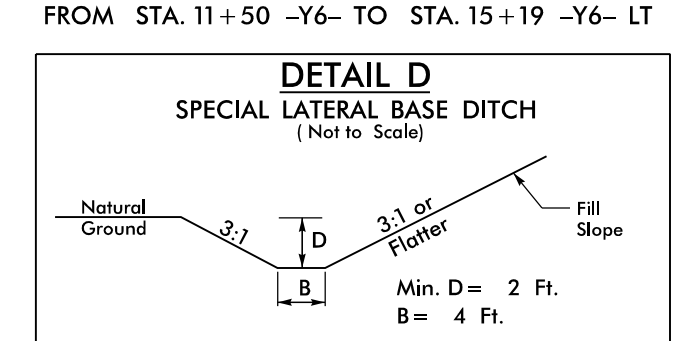
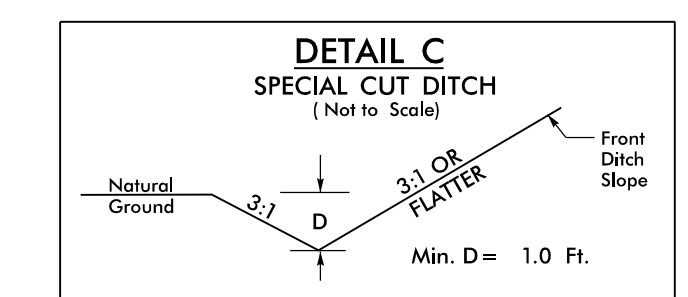
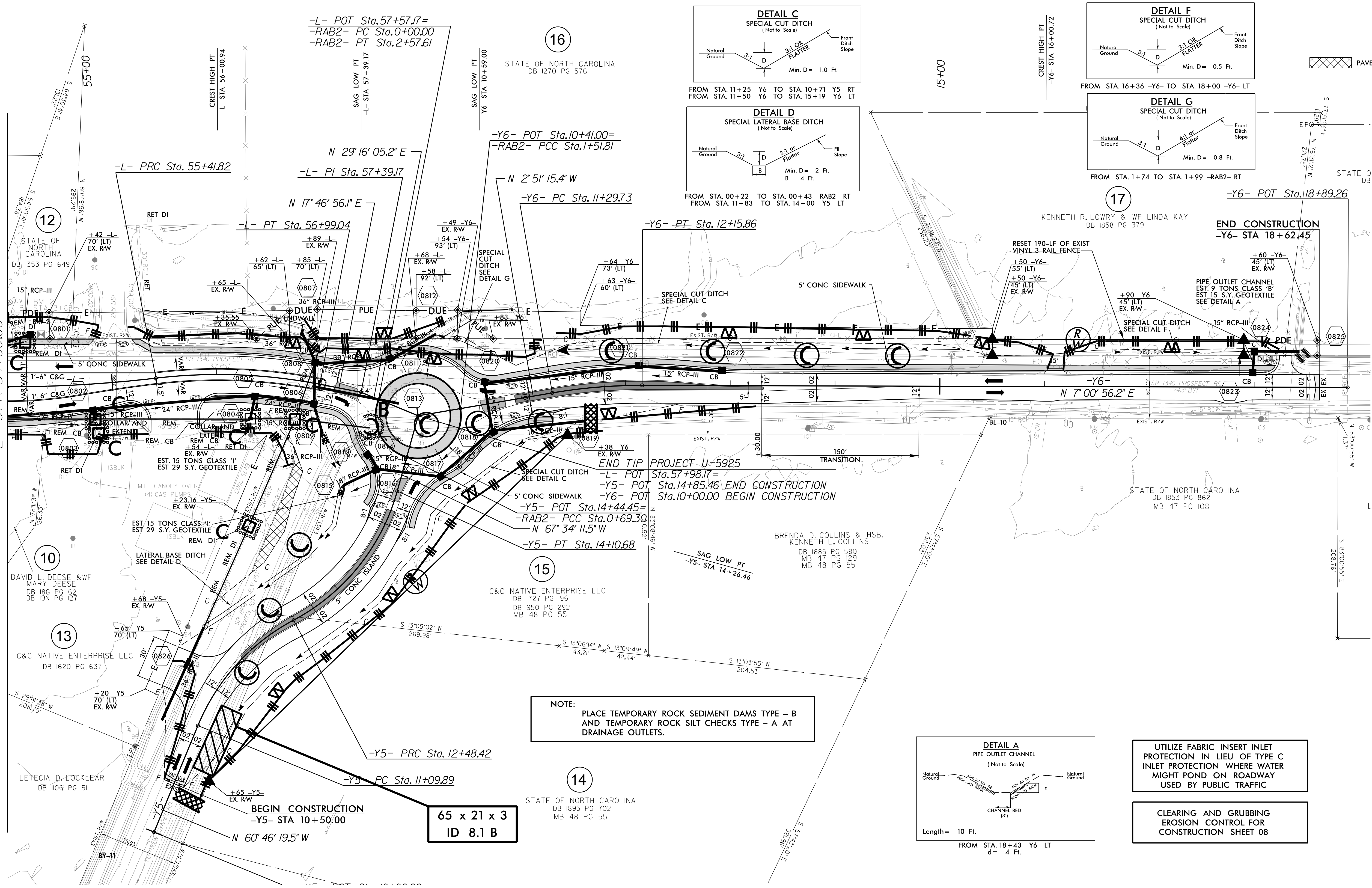
CLEARING AND GRUBBING EROSION CONTROL FOR CONSTRUCTION SHEET 07

NOTE:
PLACE TEMPORARY ROCK SEDIMENT DAMS TYPE - B AND TEMPORARY ROCK SILT CHECKS TYPE - A AT DRAINAGE OUTLETS.

-L-		-RAB2-		-Y5-		-Y6-	
PI Sta 54+70.68	PI Sta 56+21.05	PI Sta 0+46.22	PI Sta 1+34.03	PI Sta 2+94.12	PI Sta 11+82.07	PI Sta 13+34.32	PI Sta 11+72.90
$\Delta = 6' 40" 20.4" (LT)$	$\Delta = 17' 36" 09.5" (RT)$	$\Delta = 96' 50" 52.5" (LT)$	$\Delta = 115' 17" 44.4" (LT)$	$\Delta = 147' 51" 23.1" (LT)$	$\Delta = 39' 41" 11.9" (RT)$	$\Delta = 46' 29" 03.9" (LT)$	$\Delta = 9' 52" 11.6" (RT)$
D = 4' 41" 05.5"	D = 11' 11" 45.8"	D = 139' 44" 44.9"	D = 139' 44" 44.9"	D = 139' 44" 44.9"	D = 28' 38" 52.4"	D = 28' 38" 52.4"	D = 11' 27" 33.0"
L = 142.42'	L = 157.22'	L = 69.30'	L = 82.50'	L = 105.80'	L = 138.53'	L = 162.26'	L = 86.13'
T = 71.29'	T = 79.24'	T = 46.22'	T = 142.31'	T = 142.31'	T = 72.18'	T = 85.89'	T = 43.17'
R = 1,223.00'	R = 511.75'	R = 41.00'	R = 41.00'	R = 41.00'	R = 200.00'	R = 200.00'	R = 500.00'
Se = NC	Se = NC				Se = NC	Se = NC	Se = NC



MATCHLINE SHEET 7
-L- STA 54+00.00



NOTE: PLACE TEMPORARY ROCK SEDIMENT DAMS TYPE - B AND TEMPORARY ROCK SILT CHECKS TYPE - A AT DRAINAGE OUTLETS.

UTILIZE FABRIC INSERT INLET PROTECTION IN LIEU OF TYPE C INLET PROTECTION WHERE WATER MIGHT POND ON ROADWAY USED BY PUBLIC TRAFFIC

CLEARING AND GRUBBING EROSION CONTROL FOR CONSTRUCTION SHEET 08

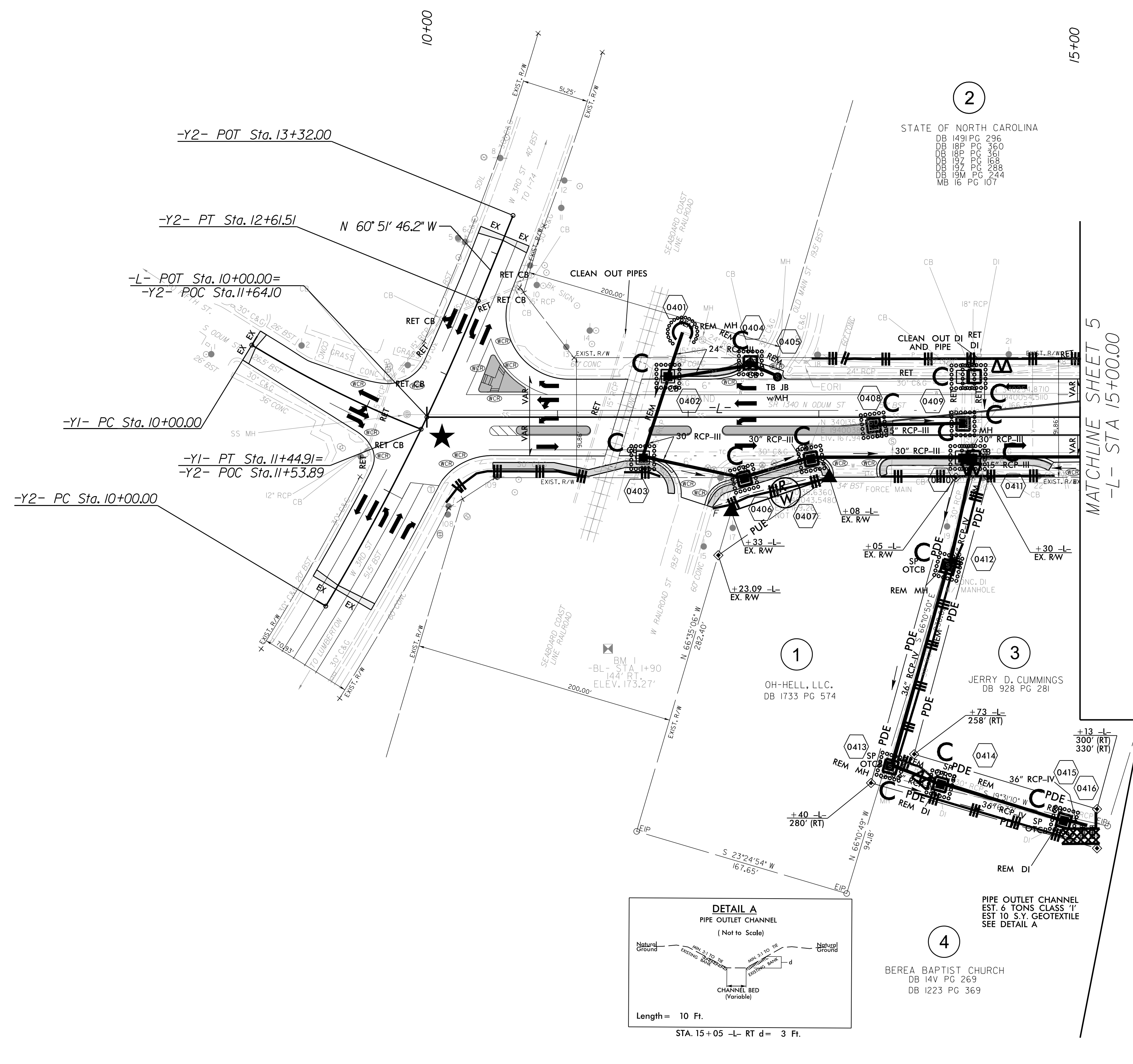
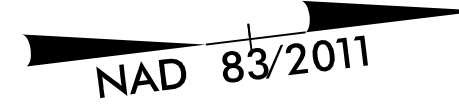
65 x 21 x 3
ID 8.1 B

5/14/2017
-01\CADD\0525\Roadside\PSH\U5925_REU_psh_08.dgn

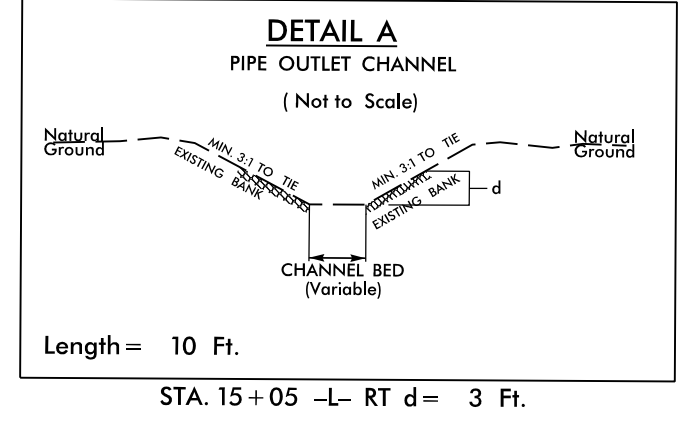
PROJECT REFERENCE NO.	SHEET NO.
U-5925	EC-09/CONST.-04
RW SHEET NO.	

4700 FALLS OF NEUSE ROAD, SUITE 300
 FALCON, NORTH CAROLINA 27629
 (919) 781-4626 VOICE (919) 781-4663 FAX
 NC LICENSE NO. F-0105

-Y1-	-Y2-
PI Sta 10+72.64	PI Sta 11+31.01
$\Delta = 10^{\circ} 03' 49.2''$ (LT)	$\Delta = 8^{\circ} 41' 10.0''$ (LT)
D = 6' 56' 41.8"	D = 3' 19' 17.4"
L = 144.9'	L = 261.5'
T = 72.64'	T = 131.0'
R = 825.00'	R = 1,725.00'



UTILIZE FABRIC INSERT INLET PROTECTION IN LIEU OF TYPE C INLET PROTECTION WHERE WATER MIGHT POND ON ROADWAY USED BY PUBLIC TRAFFIC

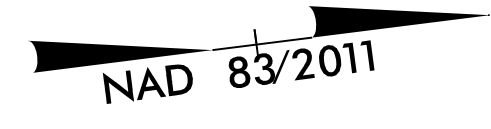


STATE OF NORTH CAROLINA

DB	1491	PG	296
DB	181P	PG	360
DB	192	PG	168
DB	197	PG	168
DB	198	PG	168
DB	199	PG	168
DB	199M	PG	244
DB	16	PG	107

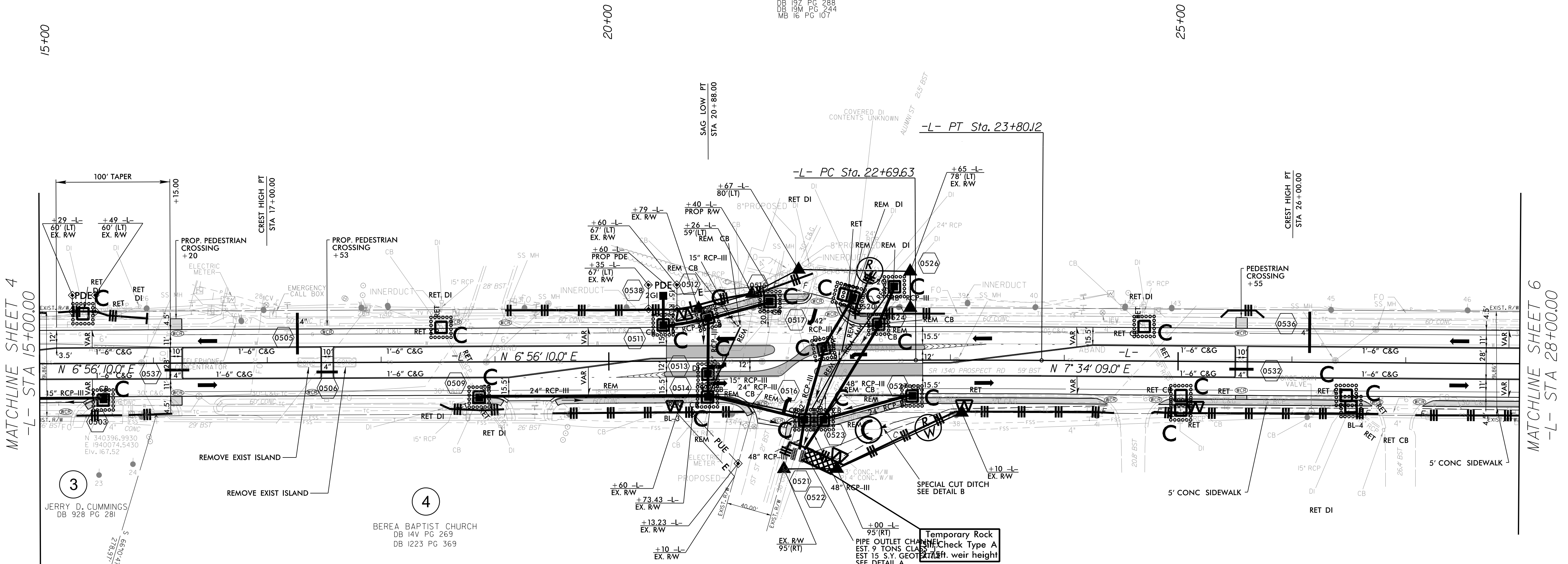
5/14/99

-L-
 PI Sta 23+24.87
 $\Delta = 0^{\circ} 37' 59.0" (RT)$
 $D = 0^{\circ} 34' 22.6"$
 $L = 110.49'$
 $T = 55.25'$
 $R = 10,000.00'$
 $Se = NC$



2

STATE OF NORTH CAROLINA
 DB 1491 PG 296
 DB 1492 PG 350
 DB 1493 PG 361
 DB 1494 PG 388
 DB 1495 PG 444
 DB 16 PG 107



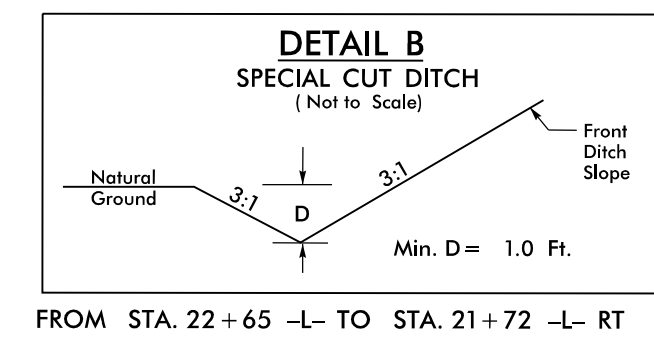
MATCHLINE SHEET 4
 -L- STA 15+00.00

MATCHLINE SHEET 6
 -L- STA 28+00.00

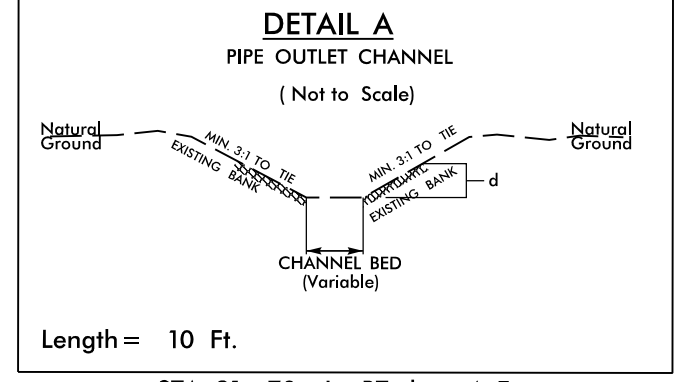
3
 JERRY D. CUMMINGS
 DB 928 PG 281

4
 BEREA BAPTIST CHURCH
 DB 14V PG 269
 DB 1223 PG 369

5
 BAPTIST CHILDREN'S HOME OF NORTH CAROLINA INC.
 (ODOM HOME)
 DB 13A PG 92



FROM STA. 22+65 -L- TO STA. 21+72 -L- RT



STA. 21+70 -L- RT d = 4 Ft.

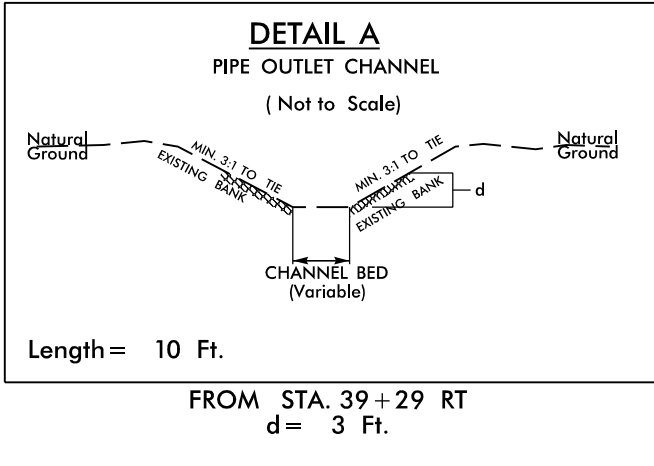
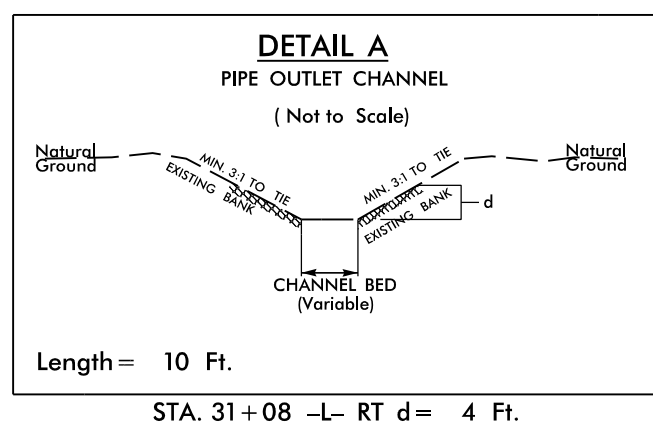
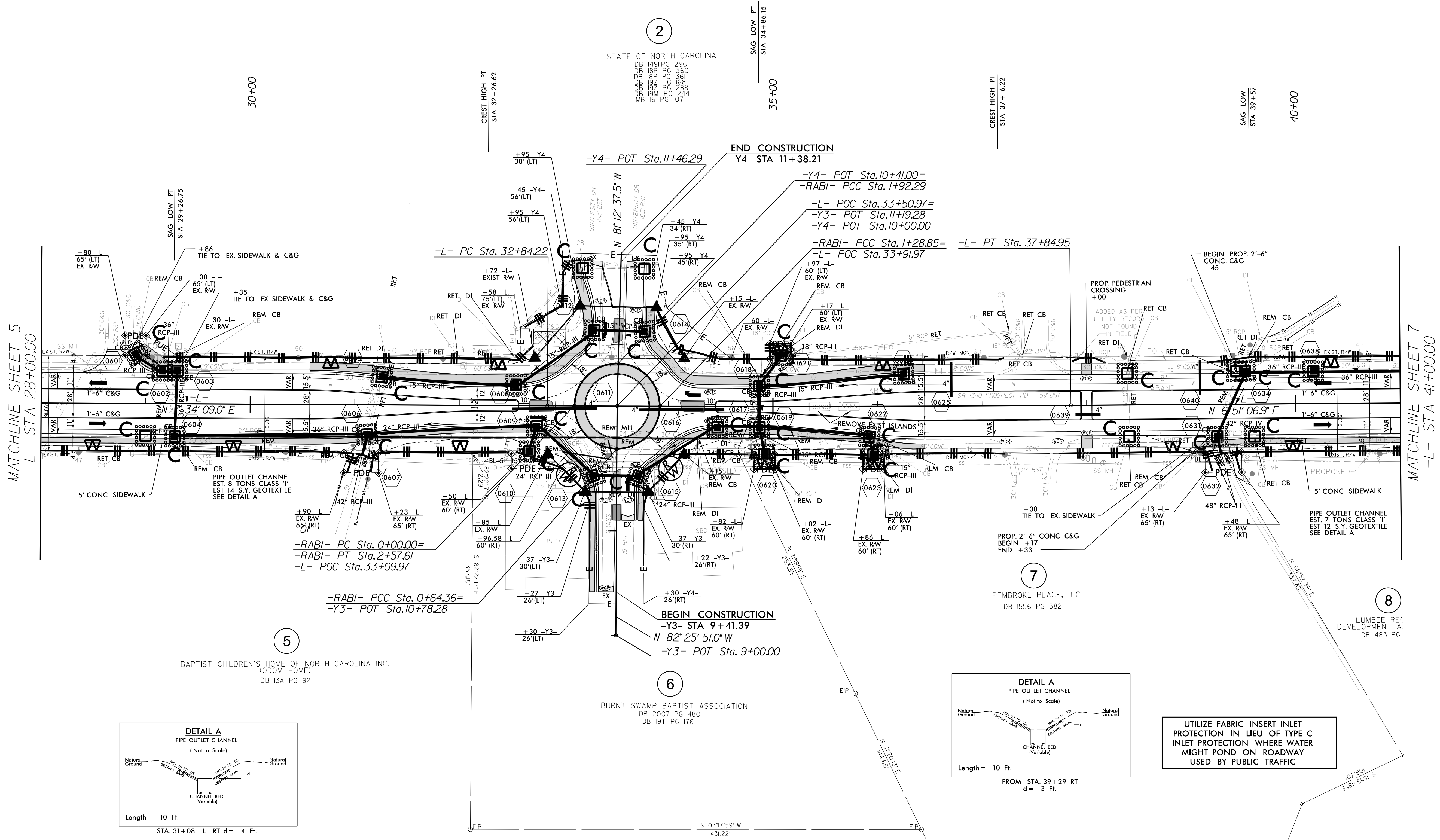
UTILIZE FABRIC INSERT INLET PROTECTION IN LIEU OF TYPE C INLET PROTECTION WHERE WATER MIGHT POND ON ROADWAY USED BY PUBLIC TRAFFIC

I:\17\10925\Roadside\PSH\U5925_REU.psh_10.dgn
 9292-01\CAD\10925\Roadside\PSH\U5925_REU.psh_10.dgn

NAD 83/2011

5/14/99

\\171027\171027\Roads\5925\Roads\5925.REU.psh.11.dgn



UTILIZE FABRIC INSERT INLET PROTECTION IN LIEU OF TYPE C INLET PROTECTION WHERE WATER MIGHT POND ON ROADWAY USED BY PUBLIC TRAFFIC

STATE OF NORTH CAROLINA

2

5

6

7

8

MATCHLINE SHEET 5
-L- STA 28+00.00

MATCHLINE SHEET 7
-L- STA 41+00.00

30+00

35+00

40+00

CREST HIGH PT
STA 32+726.62

SAG LOW PT
STA 34+86.15

CREST HIGH PT
STA 37+16.22

SAG LOW PT
STA 39+57

-Y4- POT Sta.11+46.29
-Y4- STA 11+38.21

-Y4- POT Sta.10+41.00=
-RABI- PCC Sta.1+92.29

-L- POC Sta.33+50.97=
-Y3- POT Sta.11+9.28

-Y4- POT Sta.10+00.00
-RABI- PCC Sta.1+28.85=
-L- POC Sta.33+91.97

-L- PT Sta.37+84.95

-L- PC Sta.32+84.22

-RABI- PCC Sta.0+64.36=
-Y3- POT Sta.10+78.28

-RABI- PC Sta.0+00.00=
-RABI- PT Sta.2+57.61
-L- POC Sta.33+09.97

BEGIN CONSTRUCTION
-Y3- STA 9+41.39
N 82° 25' 51.0" W
-Y3- POT Sta. 9+00.00

BAPTIST CHILDREN'S HOME OF NORTH CAROLINA INC.
(ODD HOME)
DB 13A PG 92

BURNT SWAMP BAPTIST ASSOCIATION
DB 2007 PG 480
DB 19T PG 176

PEMBROKE PLACE, LLC
DB 1556 PG 582

LUMBEE REC DEVELOPMENT A
DB 483 PG

5' CONC SIDEWALK

5' CONC SIDEWALK

PIPE OUTLET CHANNEL
EST 8 TONS CLASS 11
EST 14 S.Y. GEOTEXTILE
SEE DETAIL A

PIPE OUTLET CHANNEL
EST 7 TONS CLASS 11
EST 12 S.Y. GEOTEXTILE
SEE DETAIL A

PROP. 2'-6" CONC. C&G
BEGIN +17
END +33

PROP. PEDESTRIAN CROSSING
+00

PROP. 2'-6" CONC. C&G
+45

END CONSTRUCTION
-Y4- STA 11+38.21

UNIVERSITY DR 165' BST

N 81° 12' 37.5" W

UNIVERSITY DR 165' BST

UNIVERSITY DR 165' BST

UNIVERSITY DR 165' BST

UNIVERSITY DR 165' BST

UNIVERSITY DR 165' BST

UNIVERSITY DR 165' BST

UNIVERSITY DR 165' BST

UNIVERSITY DR 165' BST

UNIVERSITY DR 165' BST

UNIVERSITY DR 165' BST

UNIVERSITY DR 165' BST

UNIVERSITY DR 165' BST

UNIVERSITY DR 165' BST

UNIVERSITY DR 165' BST

UNIVERSITY DR 165' BST

UNIVERSITY DR 165' BST

UNIVERSITY DR 165' BST

UNIVERSITY DR 165' BST

UNIVERSITY DR 165' BST

UNIVERSITY DR 165' BST

UNIVERSITY DR 165' BST

UNIVERSITY DR 165' BST

UNIVERSITY DR 165' BST

UNIVERSITY DR 165' BST

UNIVERSITY DR 165' BST

UNIVERSITY DR 165' BST

UNIVERSITY DR 165' BST

UNIVERSITY DR 165' BST

UNIVERSITY DR 165' BST

UNIVERSITY DR 165' BST

UNIVERSITY DR 165' BST

UNIVERSITY DR 165' BST

UNIVERSITY DR 165' BST

PROJECT REFERENCE NO.	SHEET NO.
U-5925	EC-12/CONST.-07
RW SHEET NO.	
4700 FALLS OF NEUSE ROAD, SUITE 300 RALEIGH, NORTH CAROLINA 27609 (919) 781-4626 VOICE (919) 781-4865 FAX NC LICENSE NO. F-0105	

NAD 83/2011

5/14/99

I:\710017\5925\Roadside\PSH\U5925_REU_psh_12.dgn
 9/29/01\CAD\1125\Roadside\PSH\U5925_REU_psh_12.dgn

(2)

STATE OF NORTH CAROLINA
 DB 149 PG 296
 DB 189 PG 360
 DB 193 PG 361
 DB 197 PG 361
 DB 201 PG 361
 DB 205 PG 361
 DB 209 PG 361
 DB 213 PG 361
 DB 217 PG 361
 DB 221 PG 361

CREST HIGH PT
STA 42+67.21

45+00

SAG LOW PT
STA 45+40.19

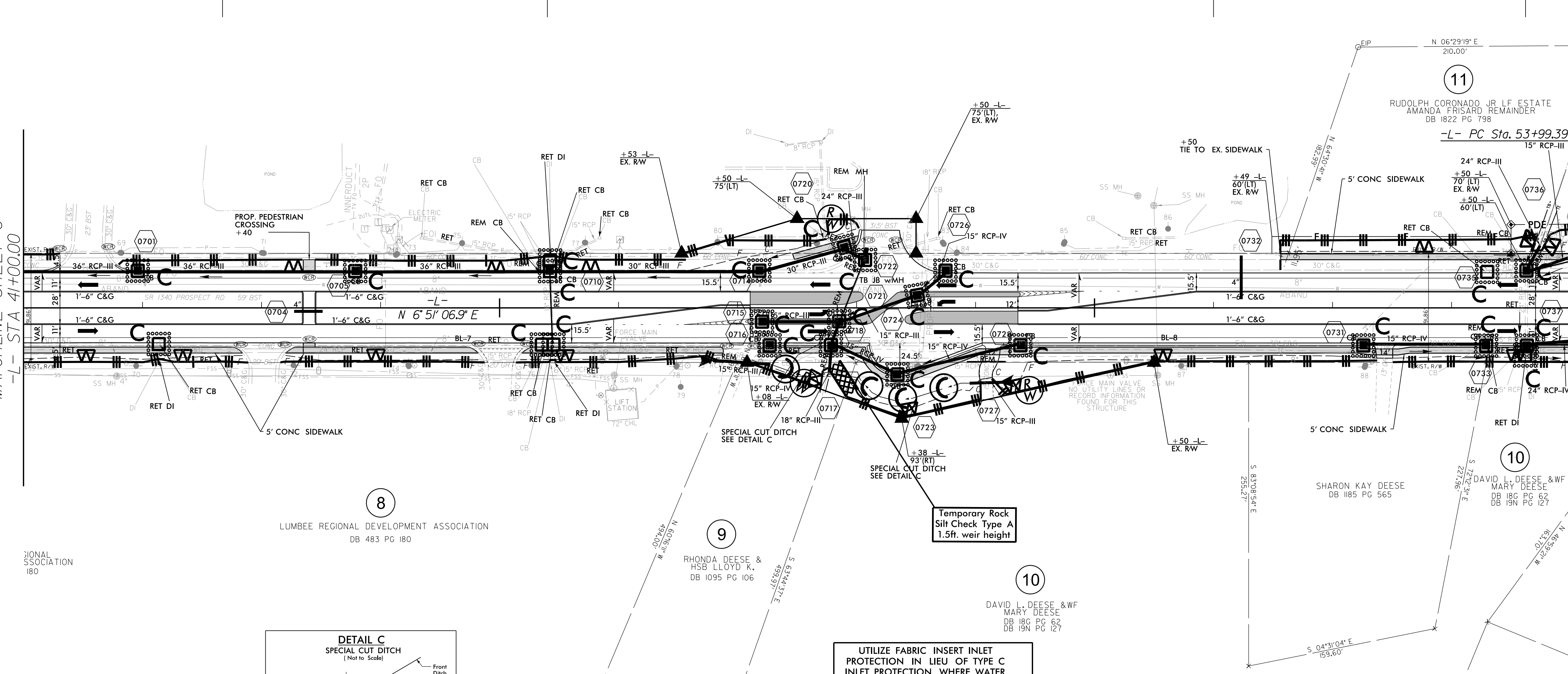
50+00

CREST HIGH PT
STA 51+00.00

SAG LOW PT
STA 53+66

MATCHLINE SHEET 6
-L- STA 41+00.00

MATCHLINE SHEET 8
-L- STA 54+00.00



(8)

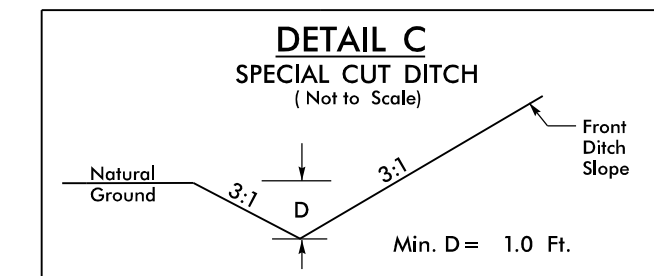
LUMBEE REGIONAL DEVELOPMENT ASSOCIATION
DB 483 PG 180

(9)

RHONDA DEESE & HSB LLOYD K.
DB 1095 PG 106

(10)

DAVID L. DEESE & WF MARY DEESE
DB 186 PG 62
DB 198 PG 127



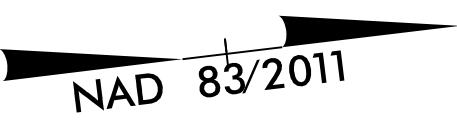
FROM STA. 47+27 -L- TO STA. 47+73 -L- RT
FROM STA. 47+77 -L- TO STA. 49+36 -L- RT

UTILIZE FABRIC INSERT INLET PROTECTION IN LIEU OF TYPE C INLET PROTECTION WHERE WATER MIGHT POND ON ROADWAY USED BY PUBLIC TRAFFIC

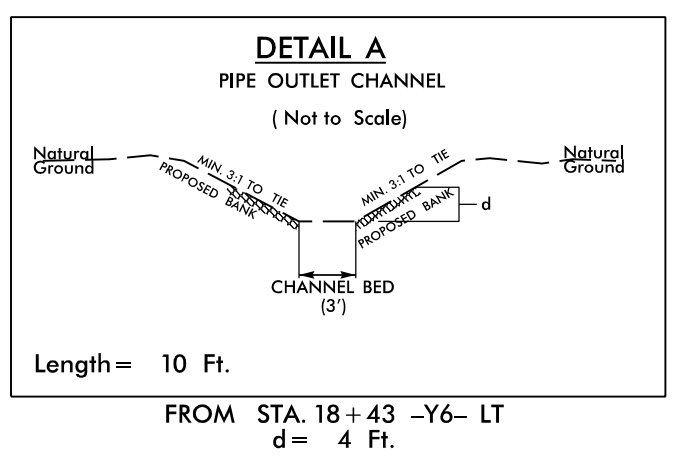
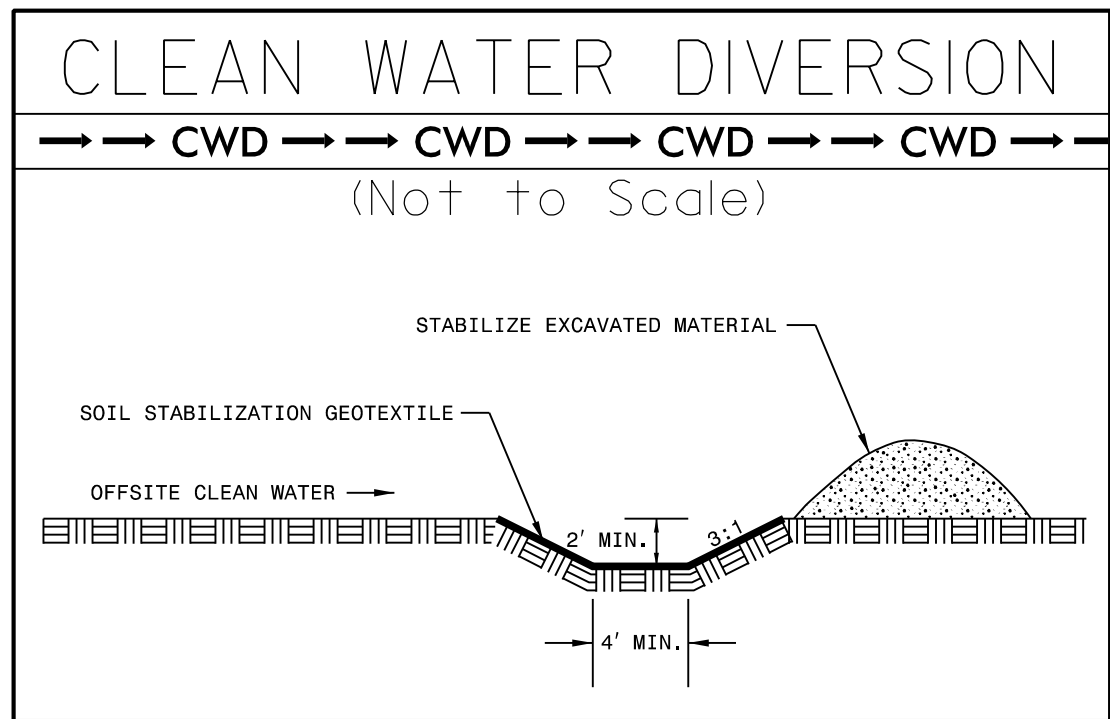
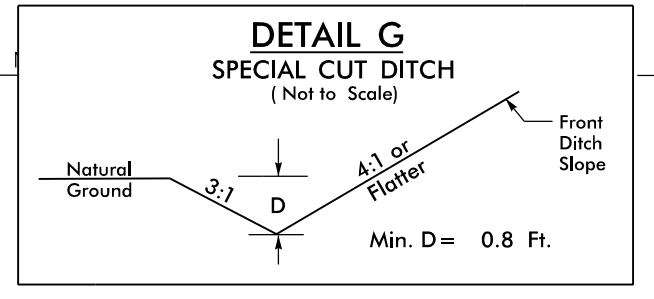
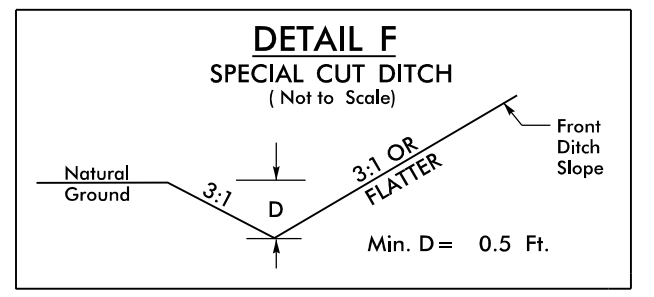
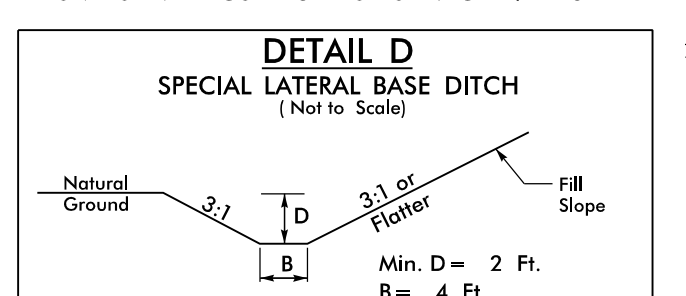
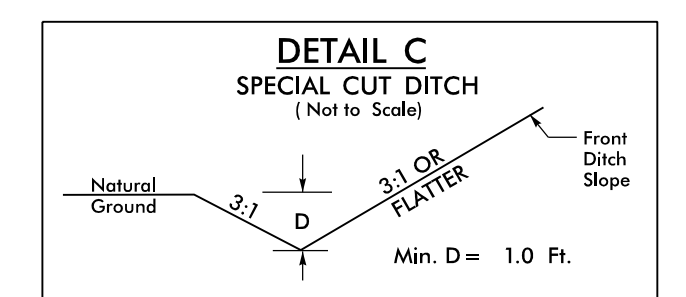
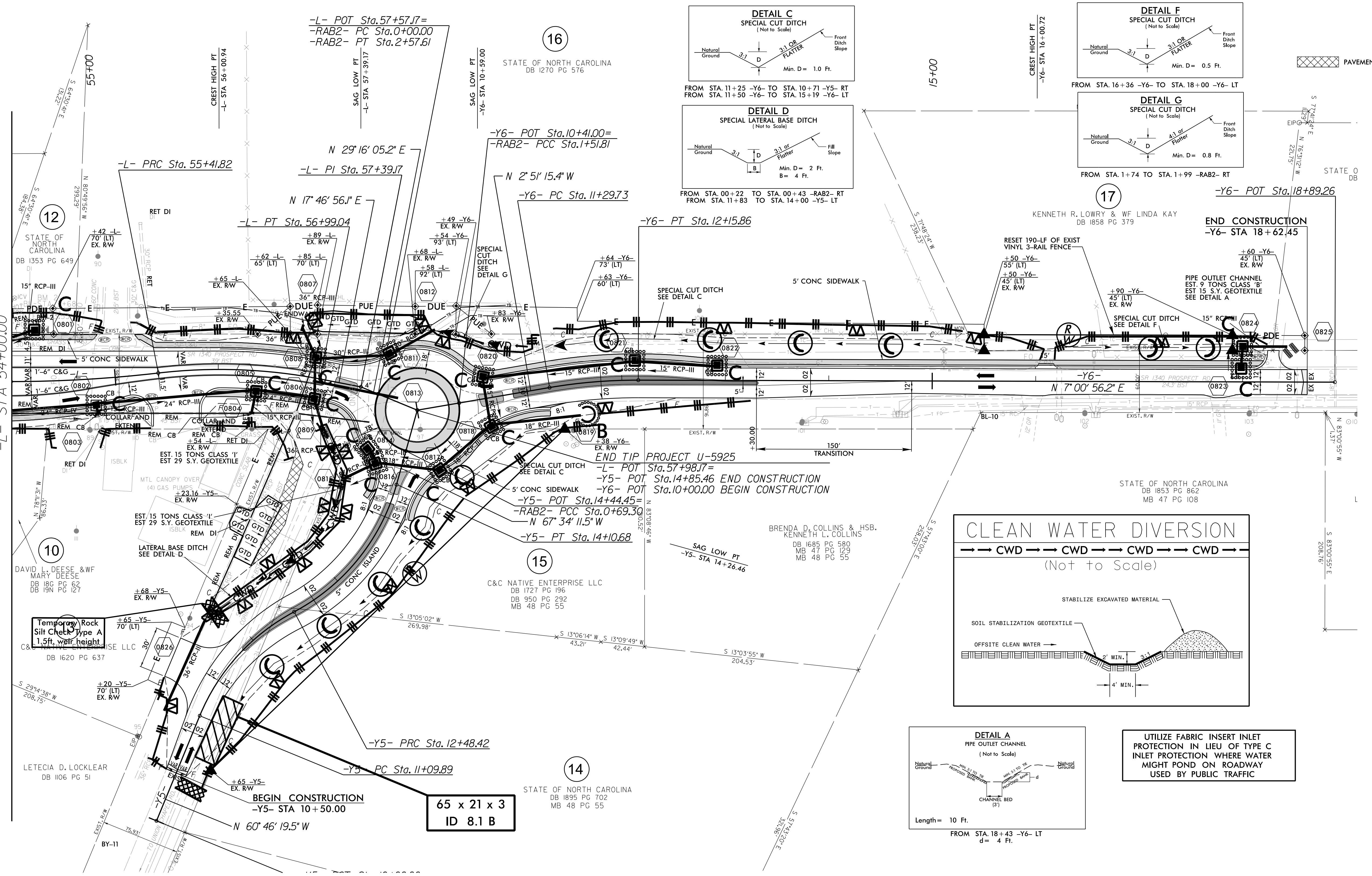
(11)

RUDOLPH CORONADO JR LF ESTATE
AMANDA FRISARD REMAINDER
DB 1822 PG 798

-L- PC Sta. 53+99.39



MATCHLINE SHEET 7
-L- STA 54+00.00



UTILIZE FABRIC INSERT INLET PROTECTION IN LIEU OF TYPE C INLET PROTECTION WHERE WATER MIGHT POND ON ROADWAY USED BY PUBLIC TRAFFIC

**65 x 21 x 3
ID 8.1 B**

5/14/09

I:\7\6925\Roadside\PSH\U5925_REU_psh_13.dgn
9/2/02 01:11:25