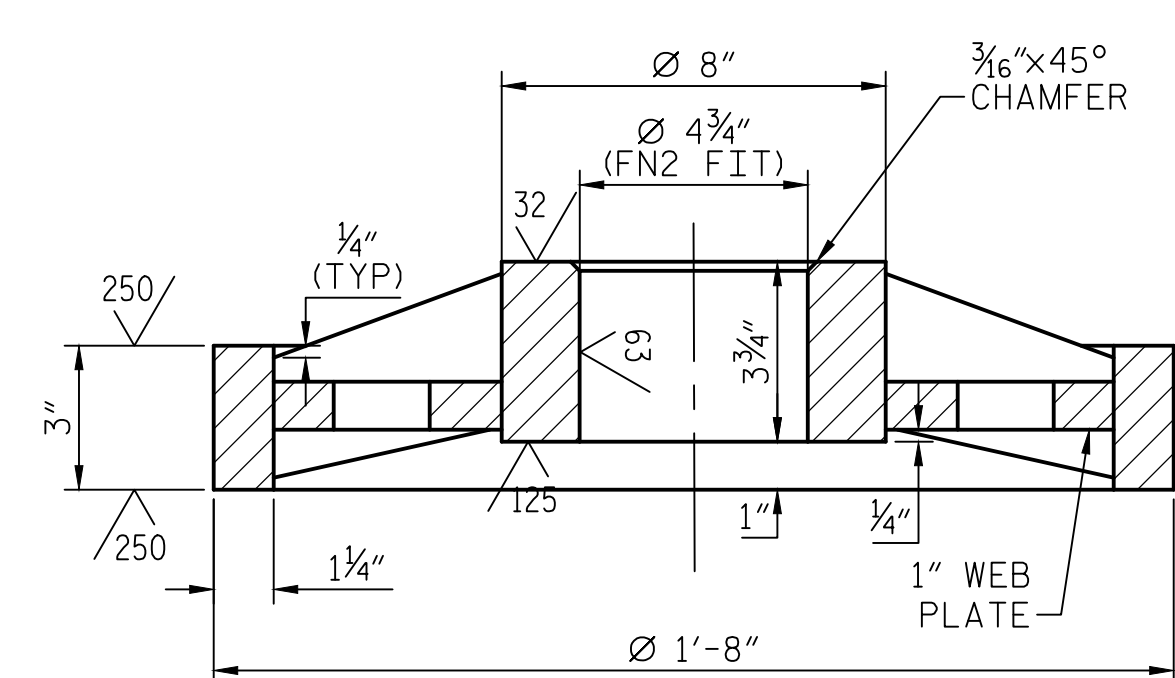
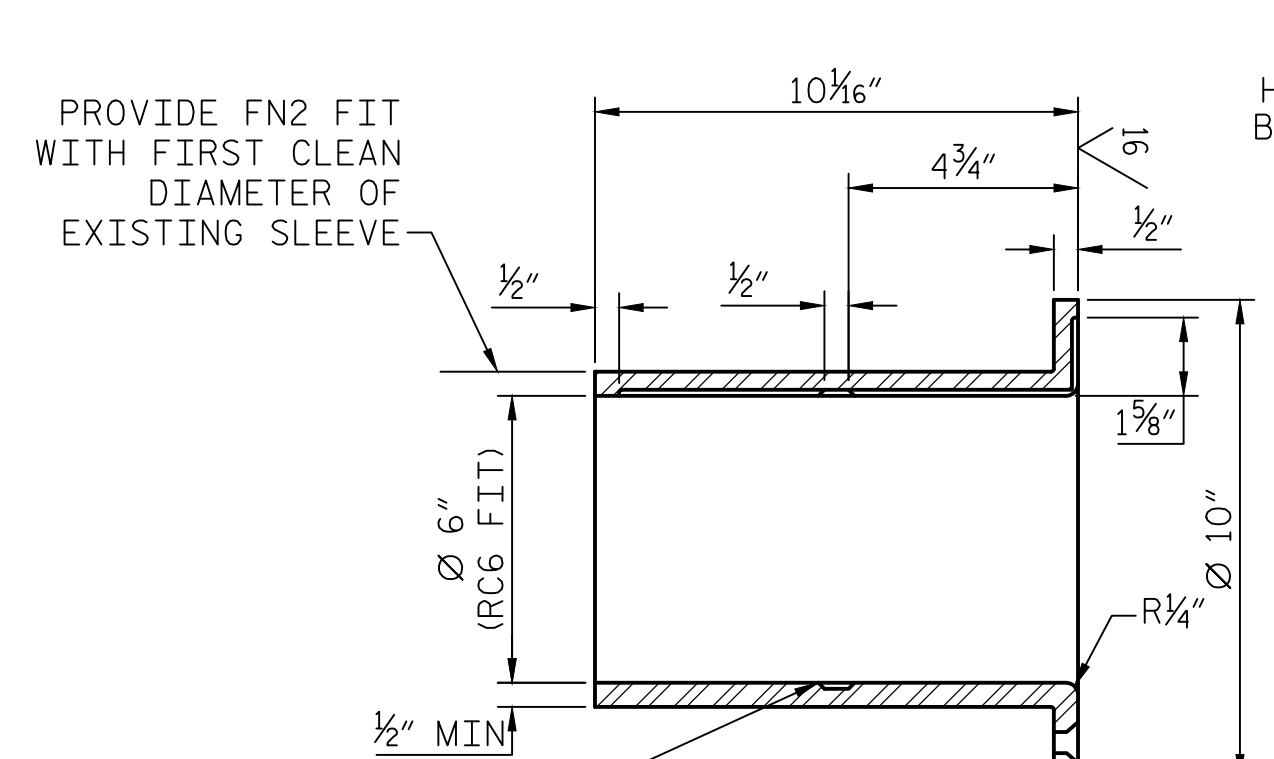


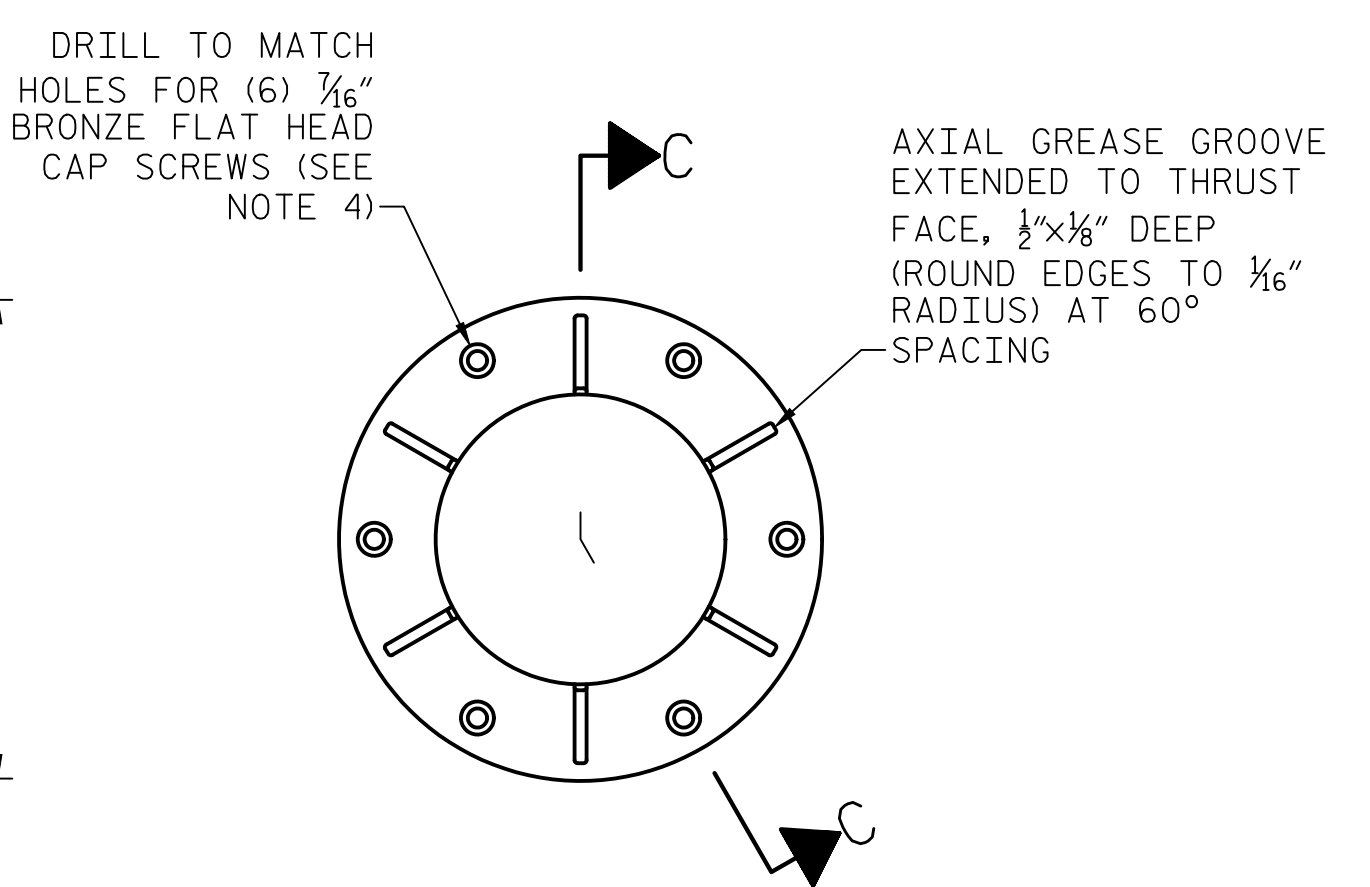
**SECTION A-A**  
SCALE: 3"=1'-0"



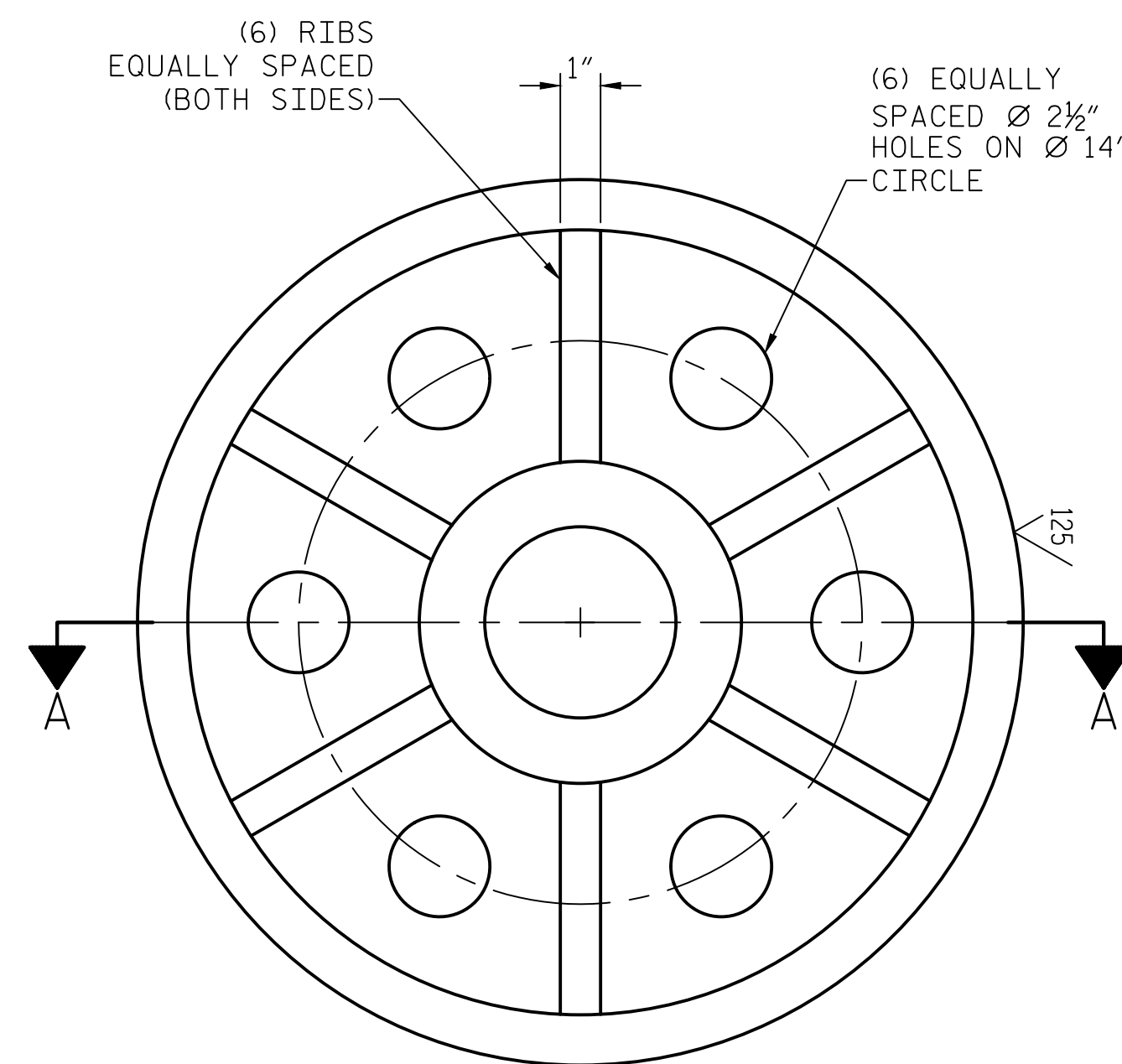
**SECTION B-B**  
SCALE: 3"=1'-0"



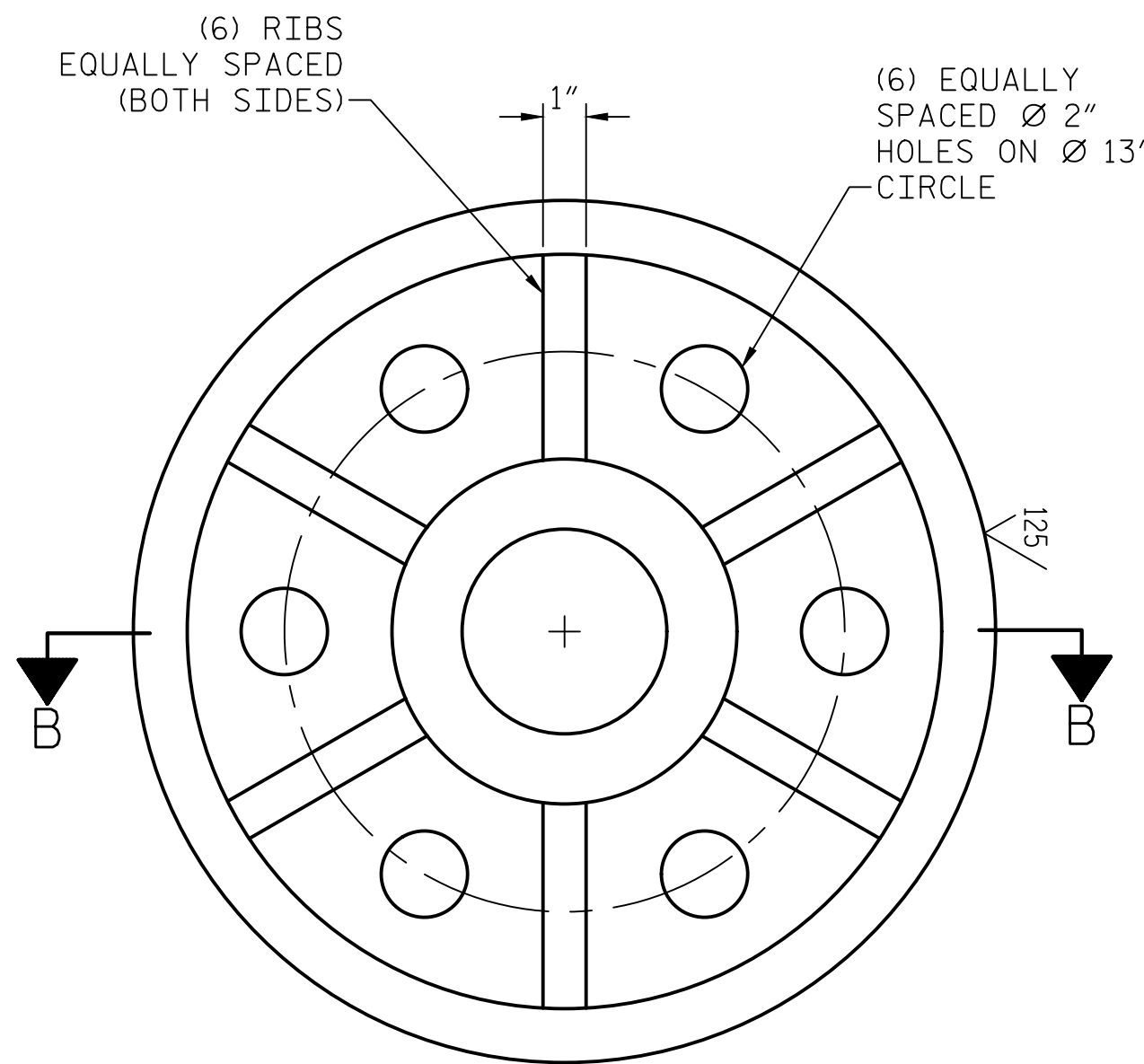
**SECTION C-C**  
SCALE: 3"=1'-0"



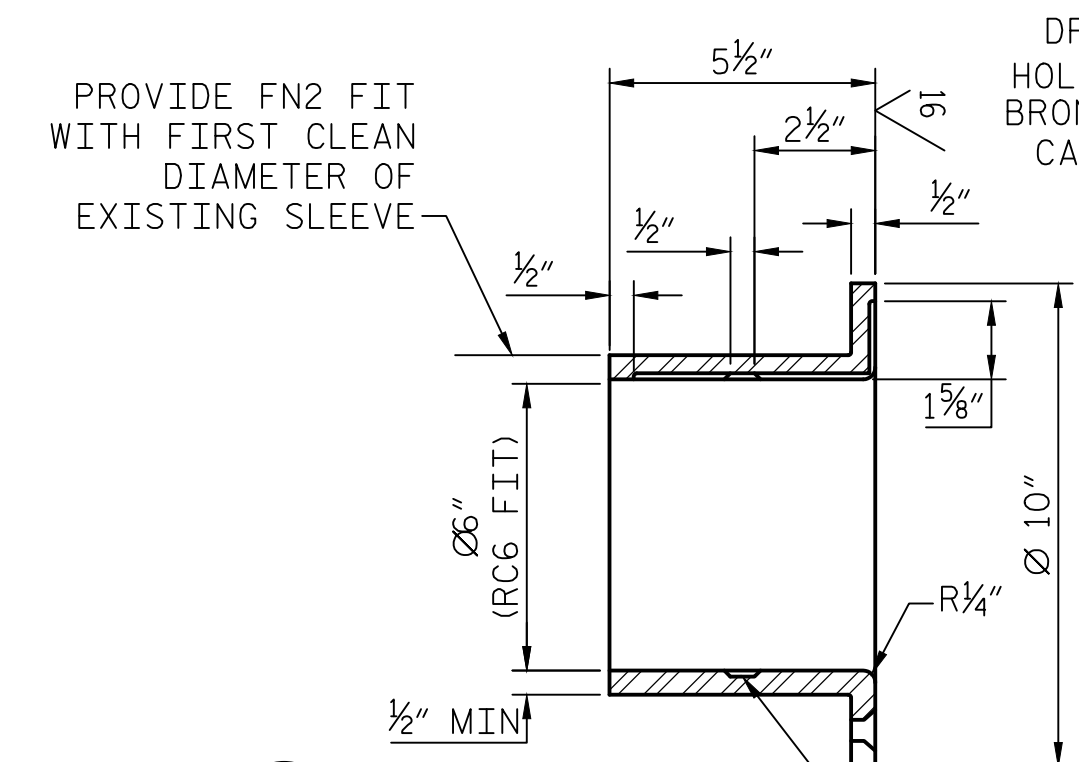
**M21 INBOARD LONGITUDINAL ROLLER BUSHING**  
SCALE: 3"=1'-0"



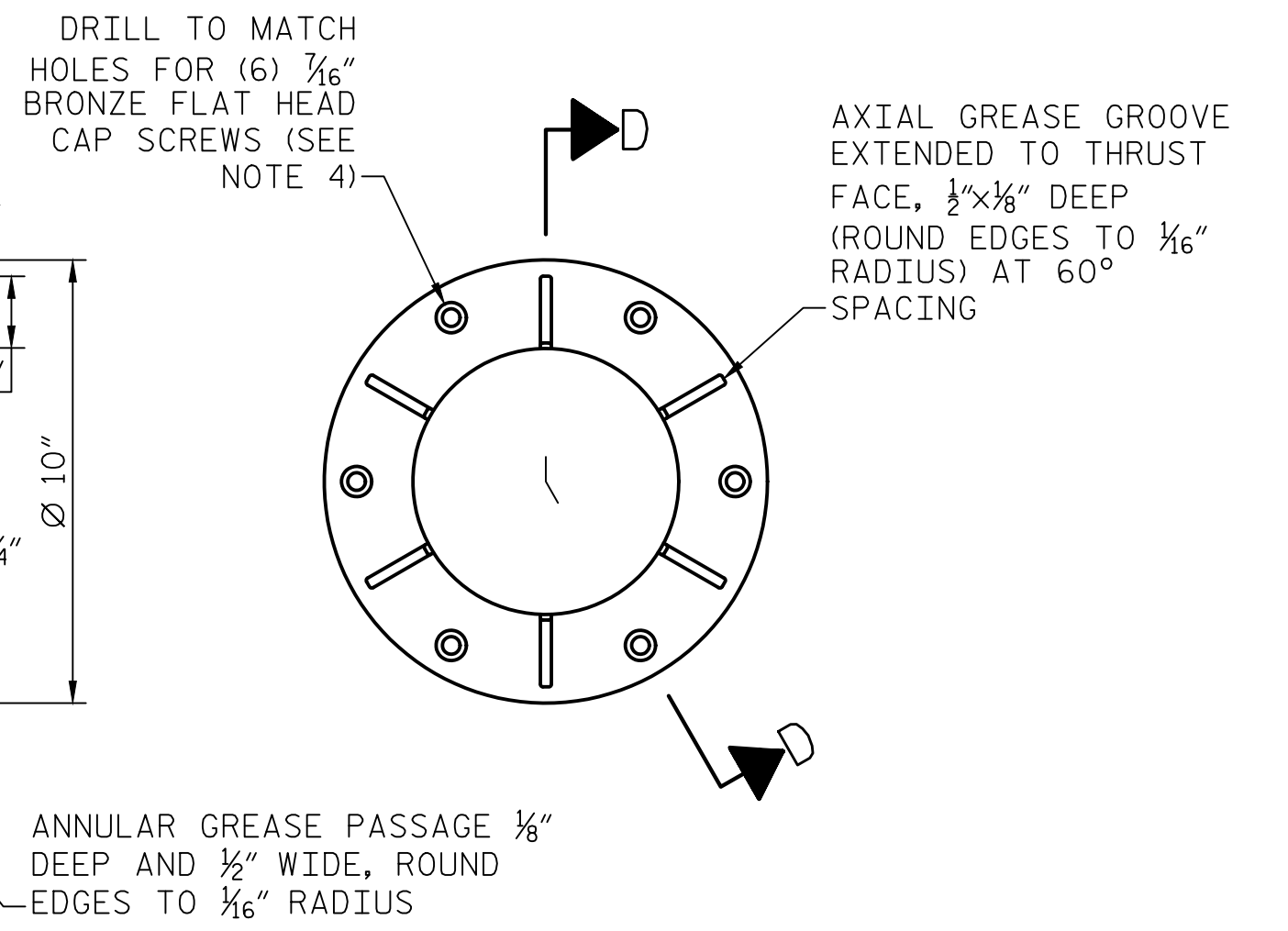
**M17 22" O.D. LONGITUDINAL ROLLER**  
SCALE: 3"=1'-0"



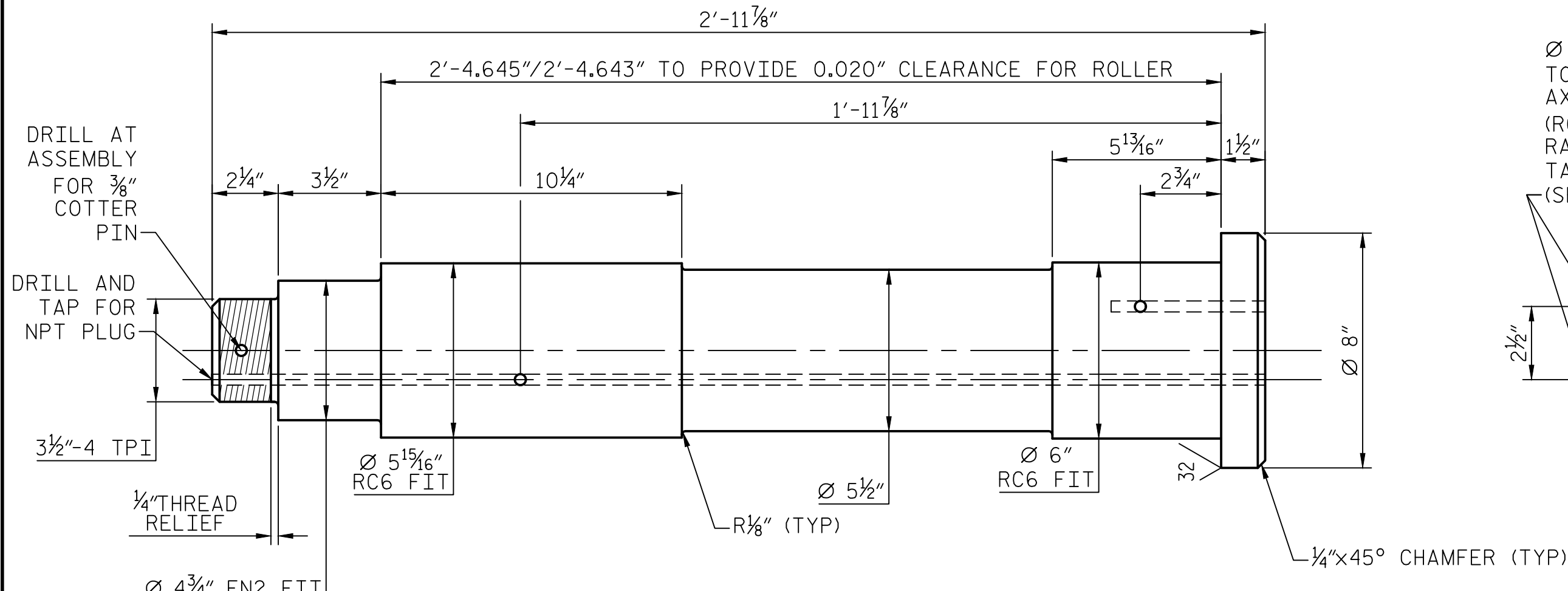
**M18 20" O.D. LONGITUDINAL ROLLER**  
SCALE: 3"=1'-0"



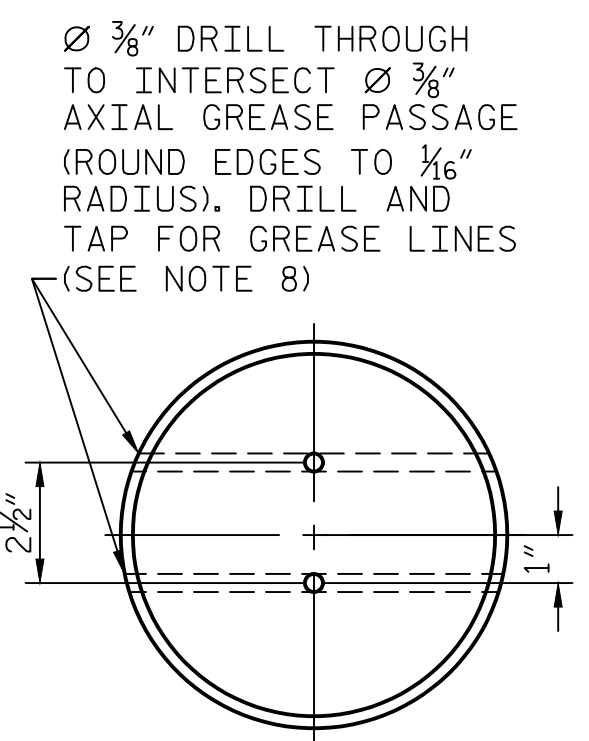
**SECTION D-D**  
SCALE: 3"=1'-0"



**M20 OUTBOARD LONGITUDINAL ROLLER BUSHING**  
SCALE: 3"=1'-0"



**M19 LONGITUDINAL ROLLER SHAFT**  
SCALE: 3"=1'-0"



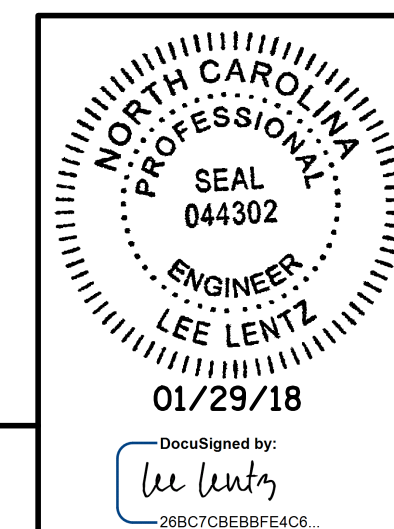
Ø 3/8" DRILL THROUGH TO INTERSECT Ø 3/8" AXIAL GREASE PASSAGE (ROUND EDGES TO 1/16" RADIUS). DRILL AND TAP FOR GREASE LINES (SEE NOTE 8)

**NOTES:**

1. ALL DIMENSIONS FOR NEW COMPONENTS MUST BE FIELD VERIFIED FOR PROPER FIT WITH EXISTING COMPONENTS.
2. LONGITUDINAL DRILLED GREASE PASSAGES MAY BE 1/2"Ø IF TAPPED AND ADAPTED FOR GREASE HOSE CONNECTION OR NPT PLUG.
3. SURFACE FINISHES ARE TO BE PER THE SPECIFICATIONS, WITH 8 MICROINCHES FOR SHAFT JOURNALS, 16 MICROINCHES FOR JOURNAL BUSHINGS AND THRUST FACES, AND 63 MICROINCHES FOR BUSHING/BASE CONTACT SURFACES.
4. PROVIDE NEW BRONZE FLAT HEAD CAP SCREWS TO MATCH EXISTING.
5. ALL GREASE GROOVES ARE TO BE PROVIDED WITH A 1/16" RADIUS AT EDGES.
6. ALL COMPONENTS NEW THIS SHEET.
7. CONTRACTOR SHALL INSTALL AND RUN LUBRICATION LINES FROM EACH NEW AND EXISTING SPAN GUIDE ROLLER TO AN ACCESSIBLE LOCATION ON THE LIFT SPAN.
8. LUBRICATION LINES SHALL BE MINIMUM 10,000 PSI BURST PRESSURE WIRE REINFORCED FLEXIBLE HOSE THAT IS EXTENDED TO AN EASILY ACCESSED LOCATION AND ATTACHES TO RIGIDLY MOUNTED GREASE FITTINGS FOR FUTURE MAINTENANCE.

PROJECT NO. 15BPR.15  
NEW HANOVER COUNTY  
STATION: \_\_\_\_\_

STATE OF NORTH CAROLINA DEPARTMENT OF TRANSPORTATION RALEIGH					
SPAN GUIDE DETAILS					
REVISIONS					
NO.	BY:	DATE:	NO.	BY:	DATE:
1			3		
2			4		
					SHEET NO. MA-10 TOTAL SHEETS 10(A)



LAST SAVED 1/24/2018 4:34 PM BY EASAMPLE  
 LAST PLOTTED 1/29/2018 10:29 AM  
 FILE: \\imiddo\p\projects\1562\01\CADD\Mechanical\MA-10\_SPAN\_GUIDE\_DETAILS

DESIGNED BY:	E. A. SAMPLE	DATE:	08/17/17
DRAWN BY:	J. M. SHOUP	DATE:	08/17/17
CHECKED BY:	L. R. LENTZ	DATE:	01/25/18
DESIGN ENGINEER OF RECORD:	L. R. LENTZ	DATE:	01/25/18

**DOCUMENT NOT CONSIDERED FINAL  
UNLESS ALL SIGNATURES COMPLETED**