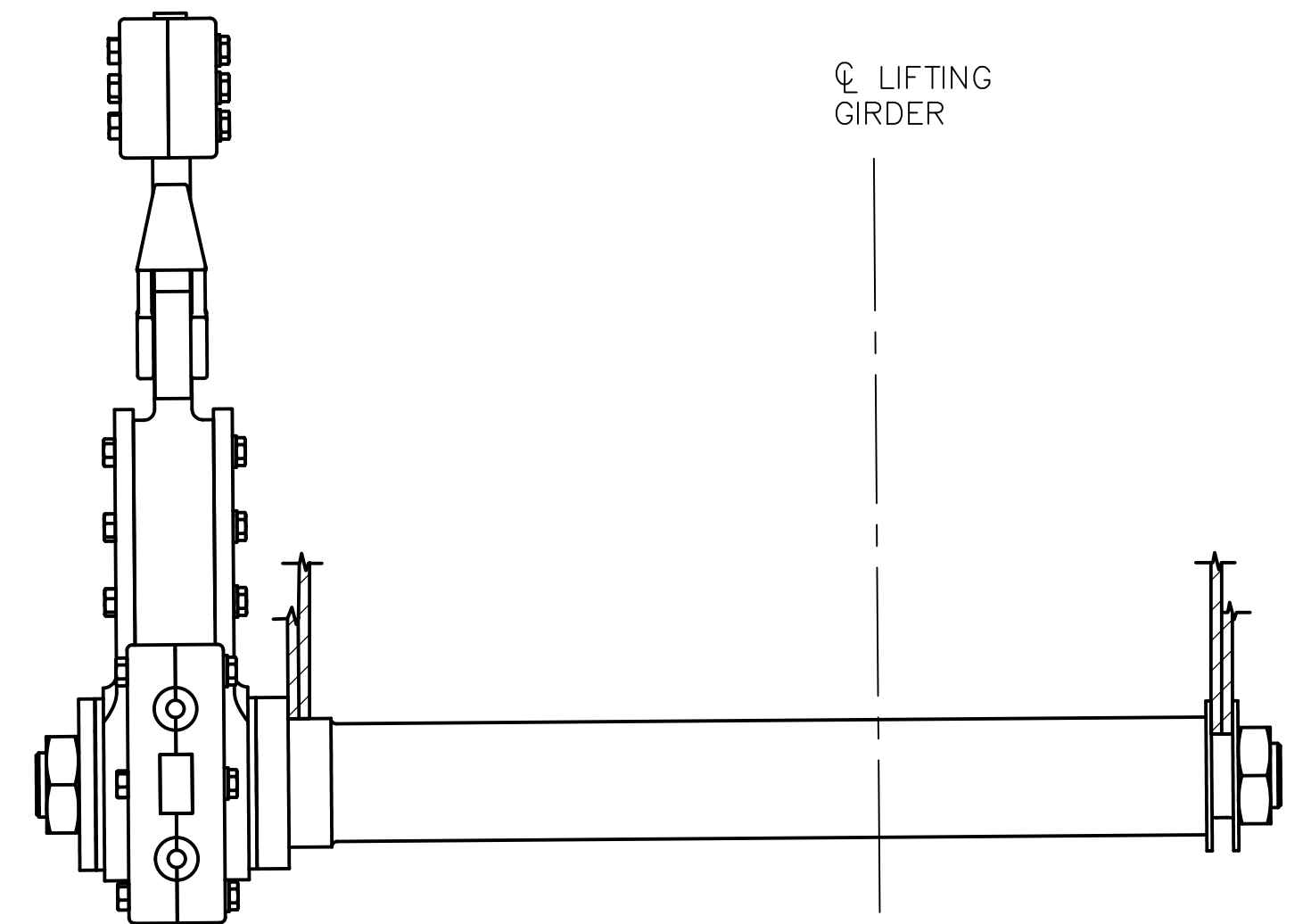


**VIEW A-A**  
SCALE: 1 1/2"=1'-0"  
EXISTING AUXILIARY COUNTERWEIGHT SHEAVE ASSEMBLY AT TOWER (TYPICAL 4 LOCATIONS)



**VIEW B-B**  
SCALE: 1 1/2"=1'-0"  
EXISTING HITCH SHAFT ASSEMBLY ON LIFT SPAN, SHOWING HITCH SHAFT AND ONE OF 2 HITCH ARMS (TYPICAL 2 LOCATIONS, SEE SHEET MA-6 FOR COMPLETE VIEW)

**NOTES:**

1. CONTRACTOR MUST SUBMIT DETAILED PROCEDURE FOR REPLACEMENT OF AUXILIARY COUNTERWEIGHT COMPONENTS.
2. ALL DIMENSIONS MUST BE FIELD VERIFIED FOR PROPER FIT WITH EXISTING COMPONENTS.
3. EXISTING AUXILIARY COUNTERWEIGHT TAKE-UP RODS AND NUTS TO BE REMOVED, CLEANED, AND THREADS CHASED FULL LENGTH BEFORE REINSTALLATION. NON-WORKING SURFACES TO BE PAINTED WITH APPROVED PAINT SYSTEM AND THREADS TO BE WELL LUBRICATED.

PROJECT NO. 15BPR.15  
NEW HANOVER COUNTY  
STATION: \_\_\_\_\_

STATE OF NORTH CAROLINA  
DEPARTMENT OF TRANSPORTATION  
RALEIGH

**AUX. COUNTERWEIGHT ASSEMBLY**

REVISIONS						SHEET NO.
NO.	BY:	DATE:	NO.	BY:	DATE:	MA-2
1			3			TOTAL SHEETS
2			4			10(A)

**MODJESKI and MASTERS**  
Experience great bridges.  
333 FAYETTEVILLE STREET, SUITE 505  
RALEIGH, NC 27601  
NC LICENSE NO. C-2979

**NORTH CAROLINA PROFESSIONAL SEAL**  
044302  
ENGINEER  
LEE LENTZ  
01/29/18  
DocuSigned by:  
Lee Lentz  
206C7C8E8BF4C6

**DOCUMENT NOT CONSIDERED FINAL UNLESS ALL SIGNATURES COMPLETED**

**AUXILIARY COUNTERWEIGHT ASSEMBLY**  
SCALE: 1/2"=1'-0"

LAST SAVED 1/24/2018 4:12 PM BY EASAMPLE... LAST PLOTTED 1/29/2018 10:28 AM... FILE: \\vmd\01\p\projects\1662\01\CADD\Mechanical\MA-2\_AUX\_COUNTERWEIGHT\_ASSEMBLY

DESIGNED BY:	E. A. SAMPLE	DATE :	08/17/17
DRAWN BY:	J. M. SHOUP	DATE :	08/17/17
CHECKED BY:	L. R. LENTZ	DATE :	01/25/18
DESIGN ENGINEER OF RECORD:	L. R. LENTZ	DATE :	01/25/18