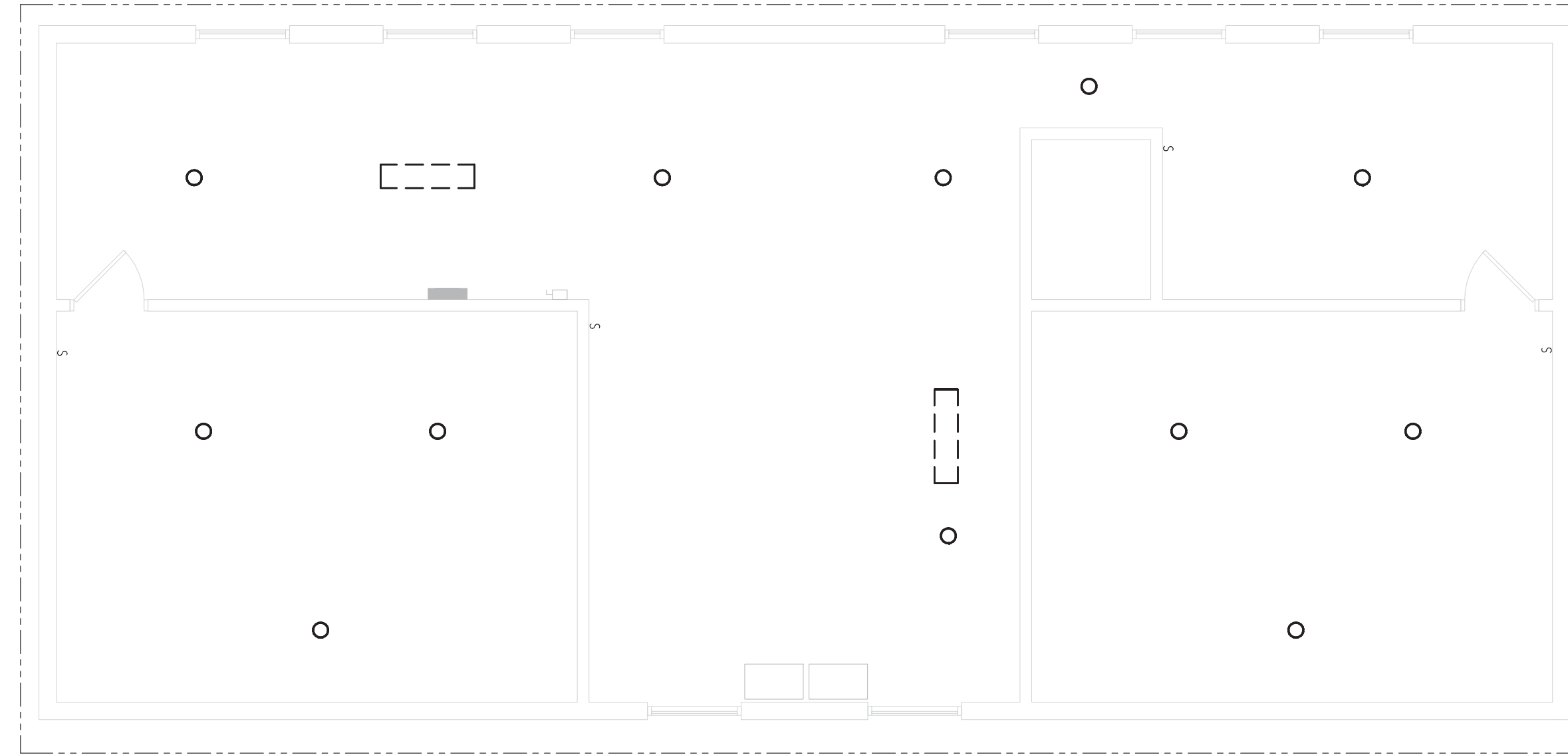


GENERAL PLAN NOTES:

- UNLESS NOTED OTHERWISE, ALL ELECTRICAL DEVICES AND EQUIPMENT ARE EXISTING TO REMAIN.

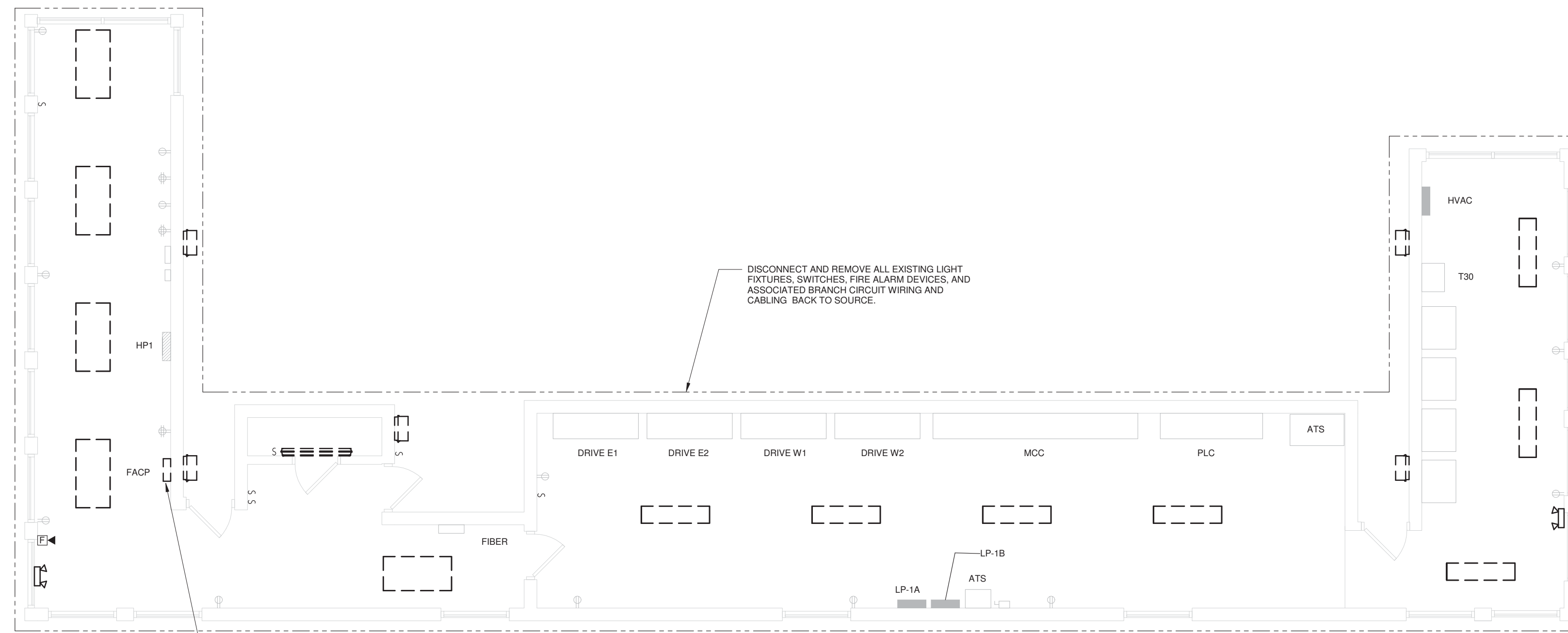


TOWER PLAN

DISCONNECT AND REMOVE ALL EXISTING LIGHT FIXTURES, SWITCHES, AND ASSOCIATED BRANCH CIRCUIT WIRING BACK TO SOURCE.

NOTE:

UNLESS NOTED OTHERWISE, ALL ELECTRICAL DEVICES AND EQUIPMENT ARE EXISTING TO REMAIN.



CONTROL HOUSE PLAN

DISCONNECT AND REMOVE ALL EXISTING LIGHT FIXTURES, SWITCHES, FIRE ALARM DEVICES, AND ASSOCIATED BRANCH CIRCUIT WIRING AND CABLING BACK TO SOURCE.

DISCONNECT AND REMOVE EXISTING FIRE ALARM CONTROL PANEL. REMOVE ALL ASSOCIATED FIRE ALARM CABLING. RETAIN 120V BRANCH CIRCUIT FOR RECONNECTION UNDER NEW WORK.

CONTROL HOUSE AND TOWER PLANS - DEMOLITION - ELECTRICAL

1
E8.1
1/4" = 1'-0"

100% CONSTRUCTION DOCUMENTS

REVISIONS

NO.	DATE	BY	DESCRIPTION OF CHANGES

CRABTREE ROHRBAUGH & ASSOCIATES - ARCHITECTS
 401 EAST WINDING HILL ROAD
 MECHANICSBURG, PA 17055
 717-458-0272 FAX 717-458-0047

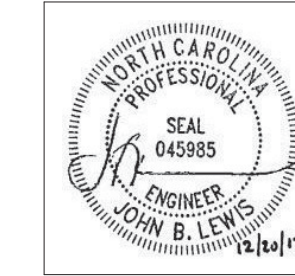
250 WEST MAIN STREET, SUITE 200
 CHARLOTTESVILLE, VA 22902
 434-975-7262 FAX 434-975-7263
www.cra-architects.com

RENOVATIONS TO
CAPE FEAR RIVER MEMORIAL LIFT BRIDGE
 NORTH CAROLINA DEPT. OF TRANSPORTATION



FLOOR PLANS - DEMO
 PLOT SCALE:
 1/4" = 1'-0"
 FILENAME:
 1709-Memorial Bridge NC Rev01.rvt
 ELECT.rvt
 DATE:
 DECEMBER 20, 2017

PROJECT
 15BPR.15
E8.1



CENTERPOINT
 ENGINEERING, INC.
 2 MARKET PLAZA WAY
 MECHANICSBURG, PA 17055
 DESIGNED BY: GLM | FUNCTIONAL LEAD: JBL | PROJECT NO. 17096

PHONE: (717) 795-8575
 FAX: (717) 795-9110
 COPYRIGHT © 2017

ALL REPORTS, PLANS, SPECIFICATIONS AND COMPUTER FILES RELATING TO THIS PROJECT ARE THE PROPERTY OF CRABTREE, ROHRBAUGH & ASSOCIATES. CRABTREE, ROHRBAUGH & ASSOCIATES RETAINS ALL COMMON LAW, STATUTE AND OTHER PROTECTED RIGHTS INCLUDING THE COPYRIGHT. THESE TO REPRODUCTION OF THE MATERIAL HEREIN OR SUBSTANTIAL USE WITHOUT WRITTEN PERMISSION OF CRABTREE, ROHRBAUGH & ASSOCIATES VIOLATES THE COPYRIGHT LAWS OF THE UNITED STATES AND WILL BE SUBJECT TO LEGAL PROSECUTION. © CRABTREE, ROHRBAUGH & ASSOCIATES, INC. 2017