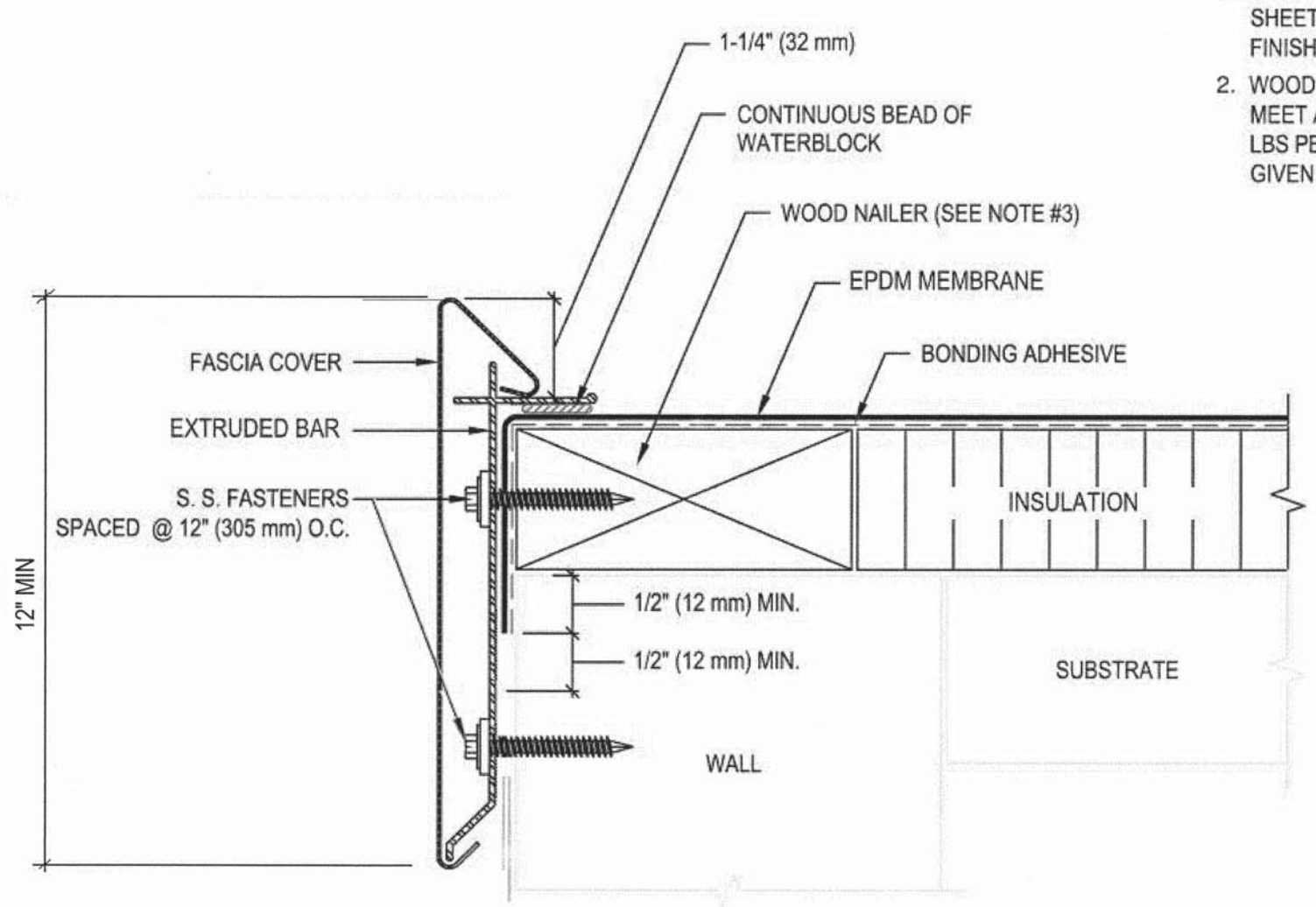


MEMBRANE SLOPE LIMITS:
 A. MAXIMUM SLOPE FOR MAX MEMBRANE SHALL BE 2" (51mm) / 12" (305mm).
 B. MAXIMUM SLOPE FOR STANDARD MEMBRANE SHALL BE 6" (152mm) / 12" (305mm).

- NOTES:**
- HOLE IN MEMBRANE SHOULD EXTEND A MINIMUM OF 1/2" (13 mm) BEYOND CLAMPING RING AND SHOULD NOT BE SMALLER THAN THE DIAMETER OF THE LEADER PIPE.
 - INSULATION ADJACENT TO DRAIN TO BE APPROPRIATE INSULATION WITH APPROPRIATE BONDING SURFACE.
 - WATERBLOCK MIN. OF 1/2 OF 10 OZ (295ML) TUBE PER 4" DRAIN. USE ADDITIONAL WATERBLOCK FOR LARGER DRAINS.
 - IN REROOF APPLICATIONS:
 -REMOVE EXISTING FLASHING DOWN TO METAL BOWL.
 -REPAIR OR REPLACE BROKEN DRAIN COMPONENTS.
 -DRILL AND TAP BROKEN DRAINS BOLTS AND REPLACE IF NECESSARY.

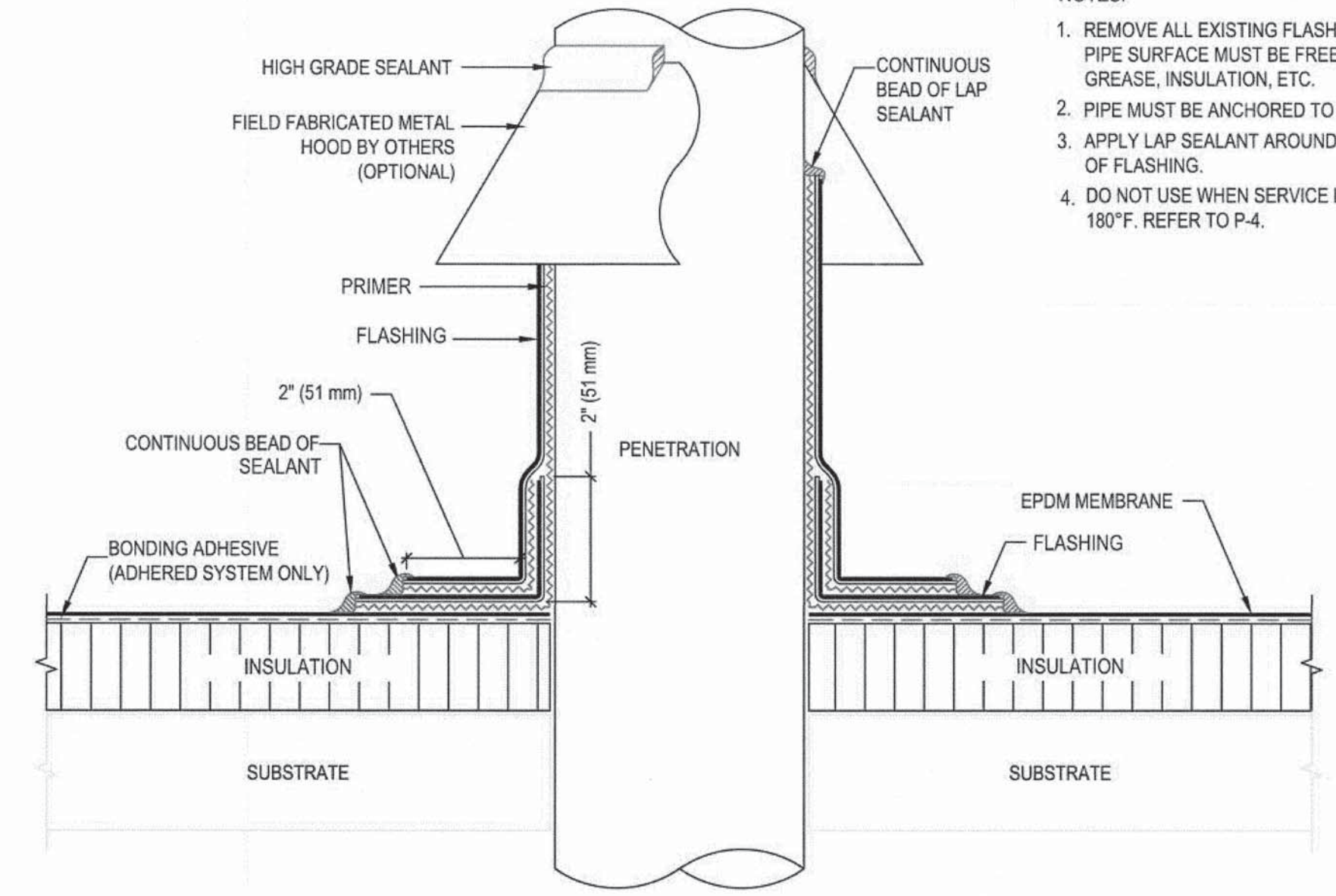
SUMP AREA FIELD SEAM REQUIREMENTS:
 A. IF SEAM EDGE IS WITHIN 9" (229mm) OF DRAIN COMPRESSION RING, EPDM TARGET PATCH REQUIRED.
 B. IF FIELD SEAM EDGE IS WITHIN 9" (229 mm) TO 18" (457 mm) OF DRAIN COMPRESSION RING, INSTALL A LAYER OF 5" FLASHING CENTERED OVER SEAM EDGE.

2 DETAIL - ROOF DRAIN
 AS.1 12" = 1'-0"



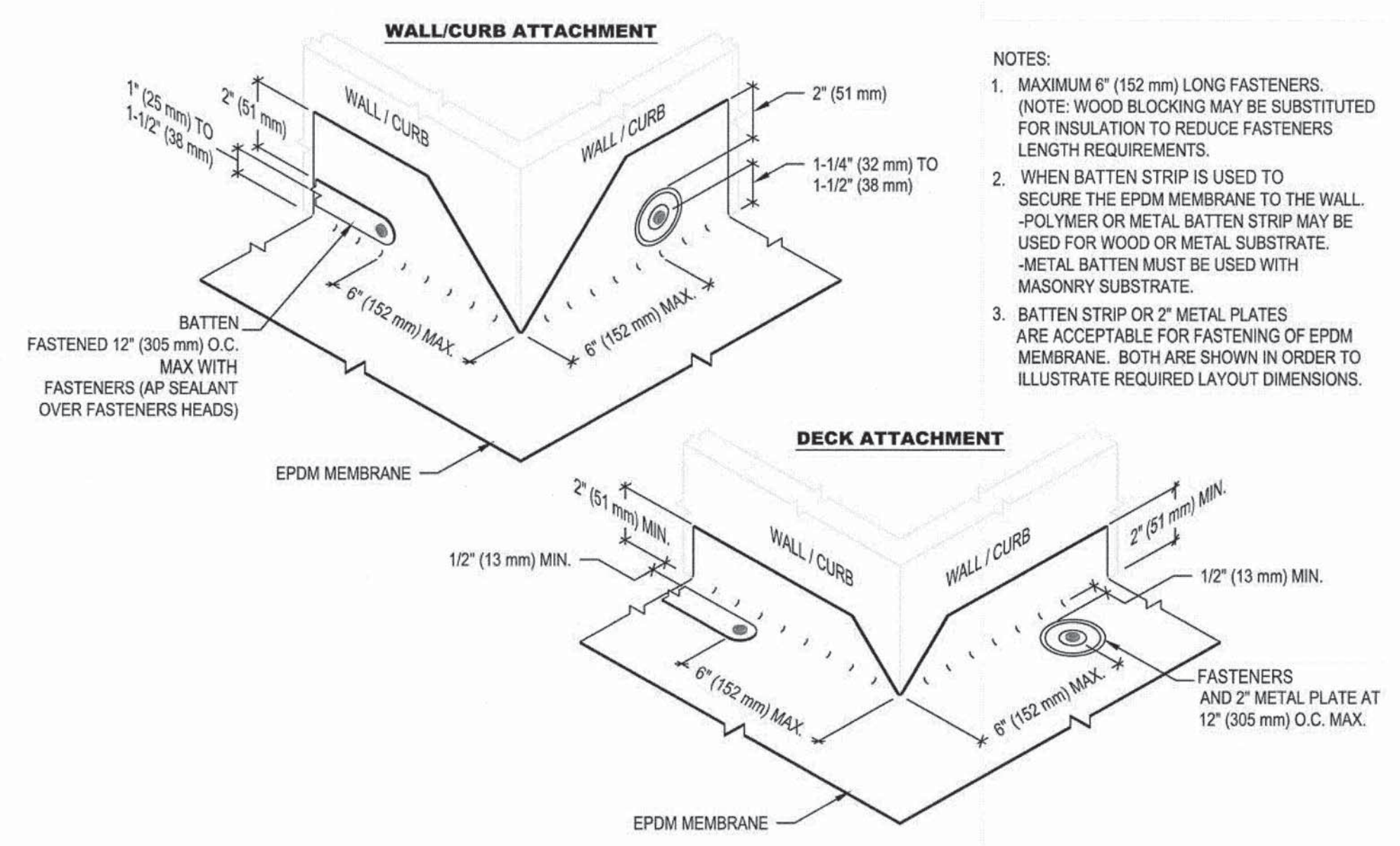
- NOTES:**
- REFER TO TECHNICAL INFORMATION SHEETS FOR SIZES, ACCESSORIES, AND FINISHES AVAILABLE.
 - WOOD NAILER MUST BE INSTALLED TO MEET APPLICABLE BUILDING CODES OR 200 LBS PER LINEAR FOOT MINIMUM IN ANY GIVEN DIRECTION.

3 DETAIL - ROOF EDGE
 AS.1 12" = 1'-0"



- NOTES:**
- REMOVE ALL EXISTING FLASHING, LEAD, ETC. PIPE SURFACE MUST BE FREE OF ALL RUST, GREASE, INSULATION, ETC.
 - PIPE MUST BE ANCHORED TO ENSURE STABILITY.
 - APPLY LAP SEALANT AROUND ENTIRE PERIMETER OF FLASHING.
 - DO NOT USE WHEN SERVICE LINE TEMP. EXCEEDS 180°F. REFER TO P-4.

1 DETAIL - PENETRATION
 AS.1 12" = 1'-0"



- NOTES:**
- MAXIMUM 6" (152 mm) LONG FASTENERS. (NOTE: WOOD BLOCKING MAY BE SUBSTITUTED FOR INSULATION TO REDUCE FASTENERS LENGTH REQUIREMENTS.)
 - WHEN BATTEN STRIP IS USED TO SECURE THE EPDM MEMBRANE TO THE WALL, -POLYMER OR METAL BATTEN STRIP MAY BE USED FOR WOOD OR METAL SUBSTRATE. -METAL BATTEN MUST BE USED WITH MASONRY SUBSTRATE.
 - BATTEN STRIP OR 2" METAL PLATES ARE ACCEPTABLE FOR FASTENING OF EPDM MEMBRANE. BOTH ARE SHOWN IN ORDER TO ILLUSTRATE REQUIRED LAYOUT DIMENSIONS.

4 DETAIL - WALL/CURB
 AS.1 12" = 1'-0"

NOTE: DETAILS WITHIN THIS DRAWING, TITLED AS "TYPICAL", INDICATE COMMON NON-SPECIFIC CONDITIONS OCCURRING THROUGHOUT BUILDING. THE LARGE SCALE ALLOWS A MORE COMPREHENSIVE LEVEL OF DETAIL TO BE SHOWN. SPECIFIC CONSTRUCTION CONDITIONS WILL VARY ACCORDING TO MATERIAL AND DIMENSIONS, MORE ACCURATELY SHOWN AS PART OF INDIVIDUAL SECTIONS AND DETAILS THROUGHOUT THE CONSTRUCTION DOCUMENTS.

100% CONSTRUCTION DOCUMENTS

ALL REPORTS, PLANS SPECIFICATIONS AND COMPUTER FILES RELATING TO THIS PROJECT ARE THE PROPERTY OF CRABTREE, ROHRBAUGH & ASSOCIATES. CRABTREE, ROHRBAUGH & ASSOCIATES RETAIN ALL COMMON LAW, STATUTE AND OTHER RESERVED RIGHTS INCLUDING THE COPYRIGHT THEREIN. REPRODUCTION OF THE MATERIAL HEREIN OR SUBSTANTIAL USE WITHOUT WRITTEN PERMISSION OF CRABTREE, ROHRBAUGH & ASSOCIATES VIOLATES THE COPYRIGHT LAWS OF THE UNITED STATES AND WILL BE SUBJECT TO LEGAL PROSECUTION. © CRABTREE, ROHRBAUGH & ASSOCIATES, INC. 2017

REVISIONS		
NO.	DATE	DESCRIPTION OF CHANGES

CRABTREE ROHRBAUGH & ASSOCIATES - ARCHITECTS
 401 EAST WINDING HILL ROAD
 MECHANICSBURG PA 17055
 717-458-0272 FAX 717-458-0047

250 WEST MAIN STREET, SUITE 200
 CHARLOTTESVILLE VA 22902
 434-975-7262 FAX 434-975-7263
 www.cra-architects.com

RENOVATIONS TO
 CAPE FEAR RIVER MEMORIAL LIFT BRIDGE
 NORTH CAROLINA DEPT. OF TRANSPORTATION



DETAILS
PLOT SCALE 12" = 1'-0"
FILENAME
DATE

PROJECT
 15BPR.15
 A5.1