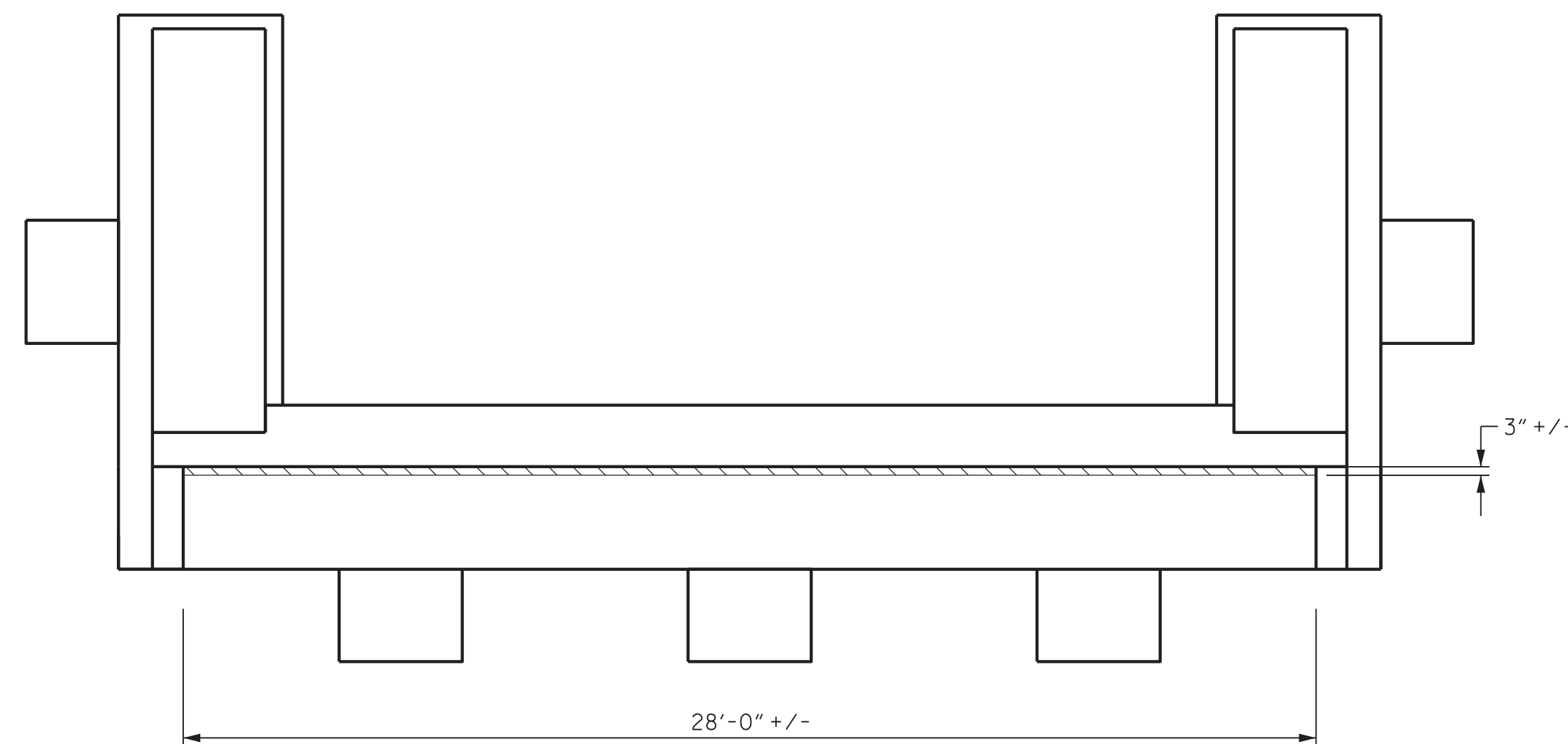


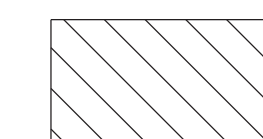
NOTES:

FOR SHOTCRETE REPAIRS SEE SPECIAL PROVISIONS.

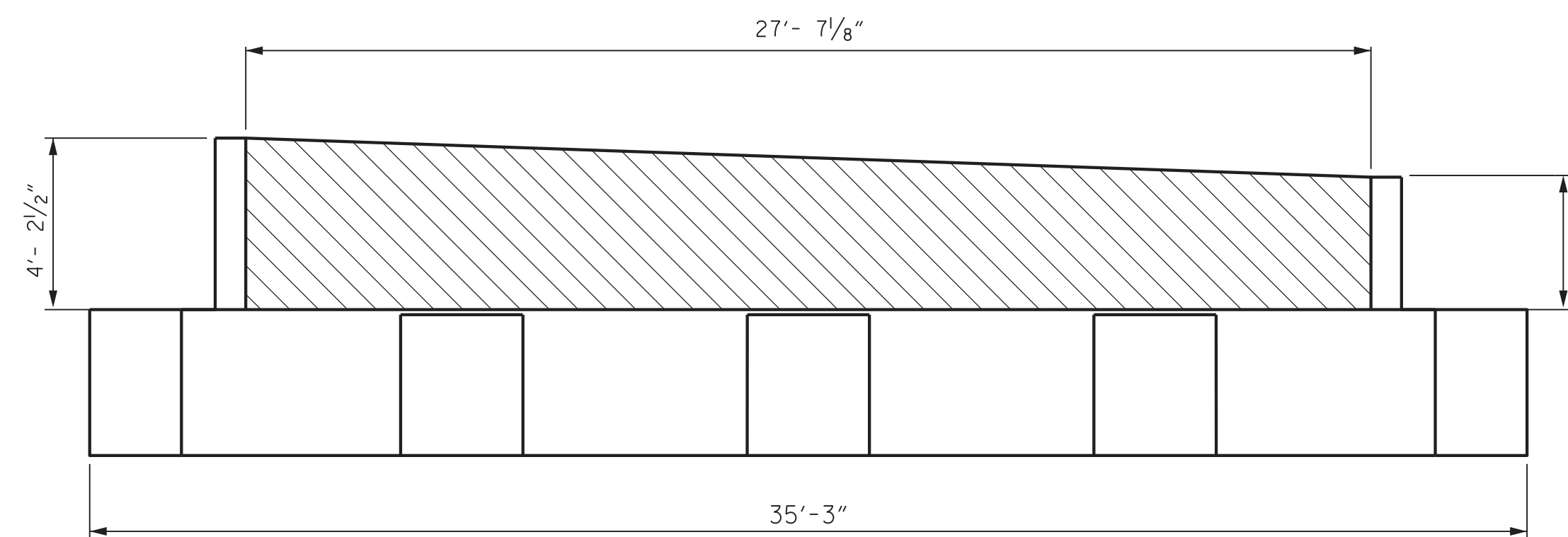
REPAIR QUANTITY TABLE	
END BENT REPAIRS RAMP B	CU. FT.
SHOTCRETE	26



PLAN



SHOTCRETE REPAIR



ELEVATION

RAMP B END BENT

PROJECT NO. 15BPR.15  
NEW HANOVER COUNTY  
 STATION: \_\_\_\_\_

STATE OF NORTH CAROLINA  
 DEPARTMENT OF TRANSPORTATION  
 RALEIGH

RAMP B  
 END BENT REPAIRS



333 FAYETTEVILLE STREET, SUITE 505  
 RALEIGH, NC 27601  
 NC LICENSE NO. C-2979



DocuSigned by:  
*Jason R Doughty*  
 5F73FA2DEA974E8...

REVISIONS

NO.	BY:	DATE:	NO.	BY:	DATE:
1			3		
2			4		

SHEET NO.  
 S-42  
 TOTAL SHEETS  
 66

12/21/2017 4:00:08 PM 368202\_SMU\_ABUT2\_640013.dgn

DESIGNED BY: C. CORMAN DATE : NOV 2017  
 DRAWN BY: C. CORMAN DATE : NOV 2017  
 CHECKED BY: J. BORUTA DATE : DEC 2017  
 DESIGN ENGINEER OF RECORD: J. DOUGHTY DATE : DEC 2017

**DOCUMENT NOT CONSIDERED FINAL  
 UNLESS ALL SIGNATURES COMPLETED**