

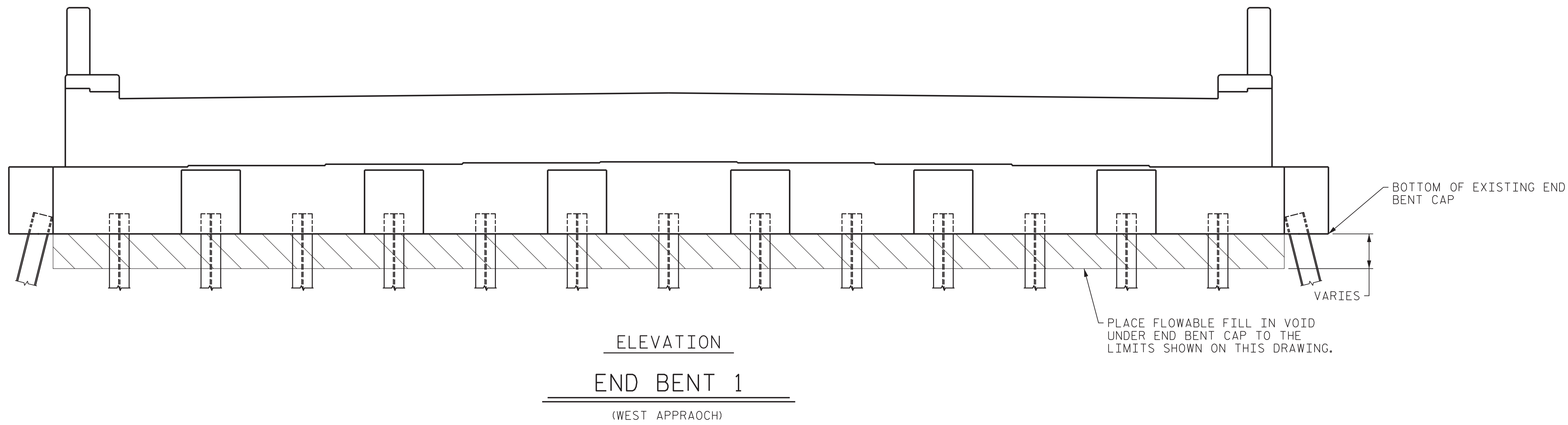
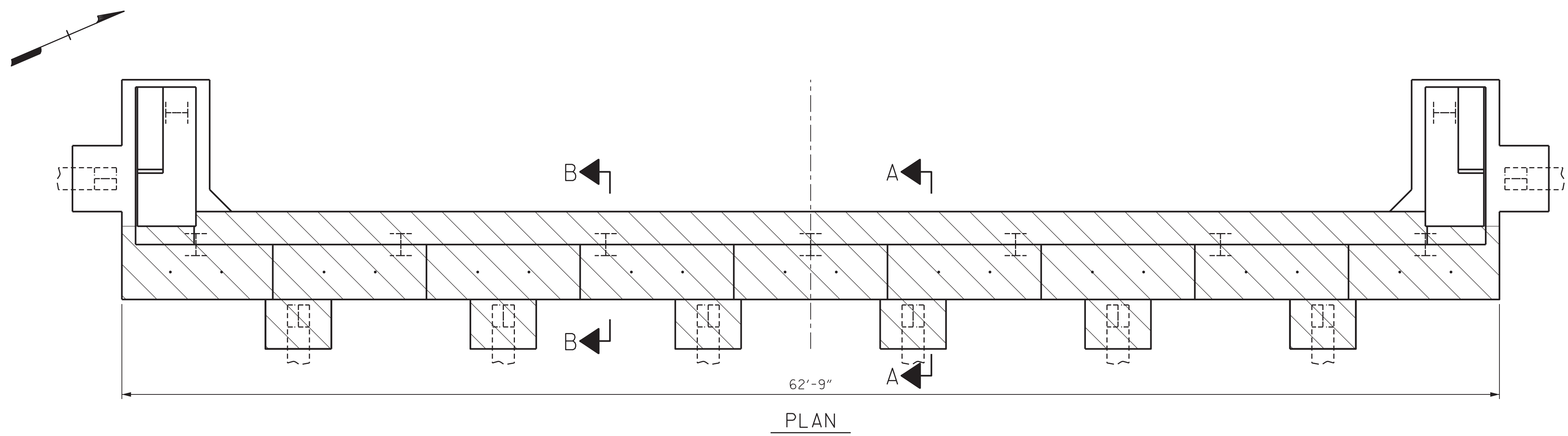
NOTES:

TEMPERATURE SHALL BE AT LEAST 40°F WHEN PLACING FLOWABLE FILL.

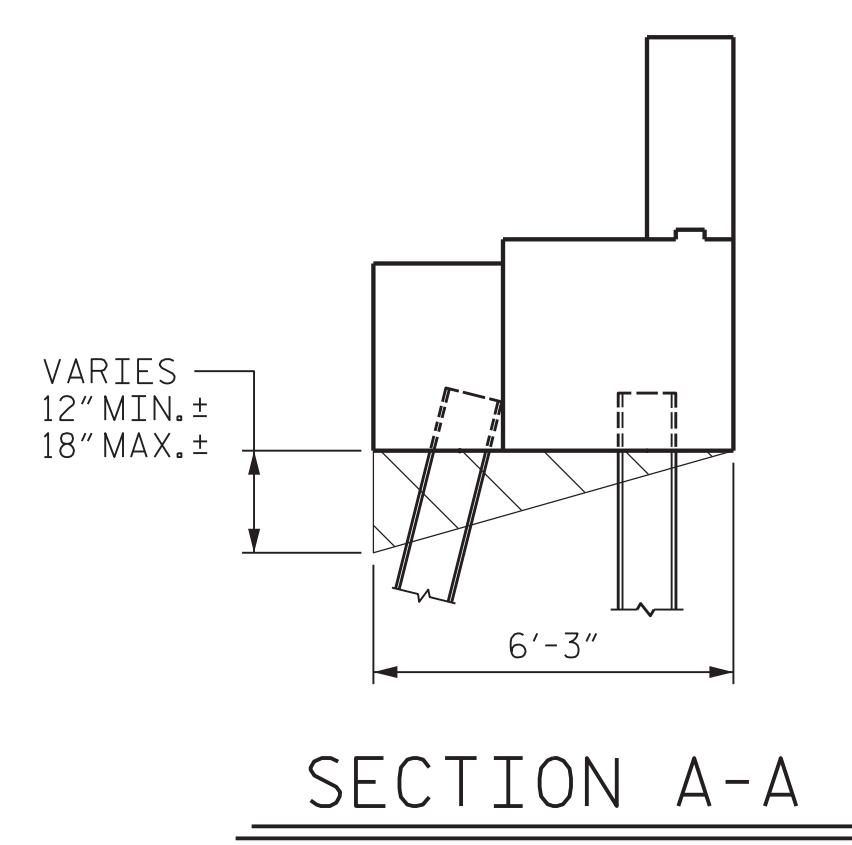
CLEAN AREA UNDER CAP PRIOR TO PLACING FLOWABLE FILL.

FOR FLOWABLE FILL, SEE SPECIAL PROVISIONS.

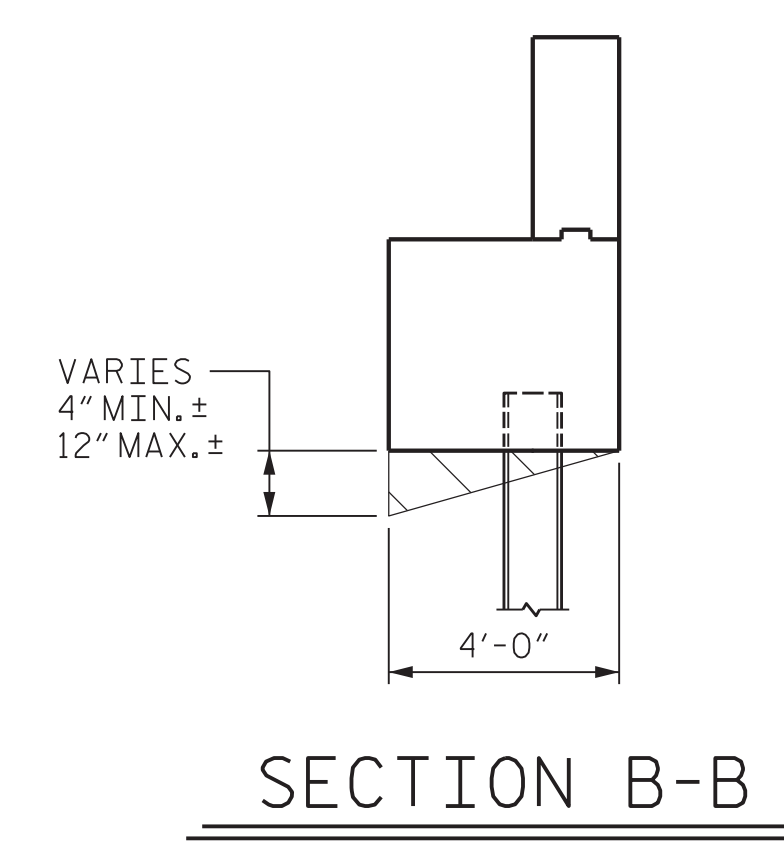
REPAIR QUANTITY TABLE		
REPAIRS END BENT 1	ESTIMATE	ACTUAL
FLOWABLE FILL	8 CY	CY



FLOWABLE FILL BOUNDARY LIMITS



SECTION A-A



SECTION B-B

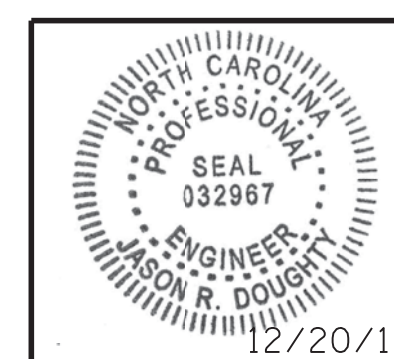
PROJECT NO. 15BPR.15
NEW HANOVER COUNTY
 STATION: _____

STATE OF NORTH CAROLINA
 DEPARTMENT OF TRANSPORTATION
 RALEIGH

END BENT 1 REPAIRS



333 FAYETTEVILLE STREET, SUITE 505
 RALEIGH, NC 27601
 NC LICENSE NO. C-2979



DocuSigned by:
Jason R Doughty
 5F73FA2DEA674E8..

REVISIONS				SHEET NO.	
NO.	BY:	DATE:	NO.	BY:	DATE:
1			3		
2			4		

TOTAL SHEETS: 66

DOCUMENT NOT CONSIDERED FINAL UNLESS ALL SIGNATURES COMPLETED

12/21/2017 400_081_368202_SMU_ABU11.640013.dgn

DESIGNED BY: C. CORMAN DATE: NOV 2017
 DRAWN BY: K. WHITE DATE: NOV 2017
 CHECKED BY: J. BORUTA DATE: DEC 2017
 DESIGN ENGINEER OF RECORD: J. DOUGHTY DATE: DEC 2017