

REPAIR ①

CLEAN AND RE-WELD CONNECTION BETWEEN CROSSFRAME ANGLES AND CONNECTION PLATE.

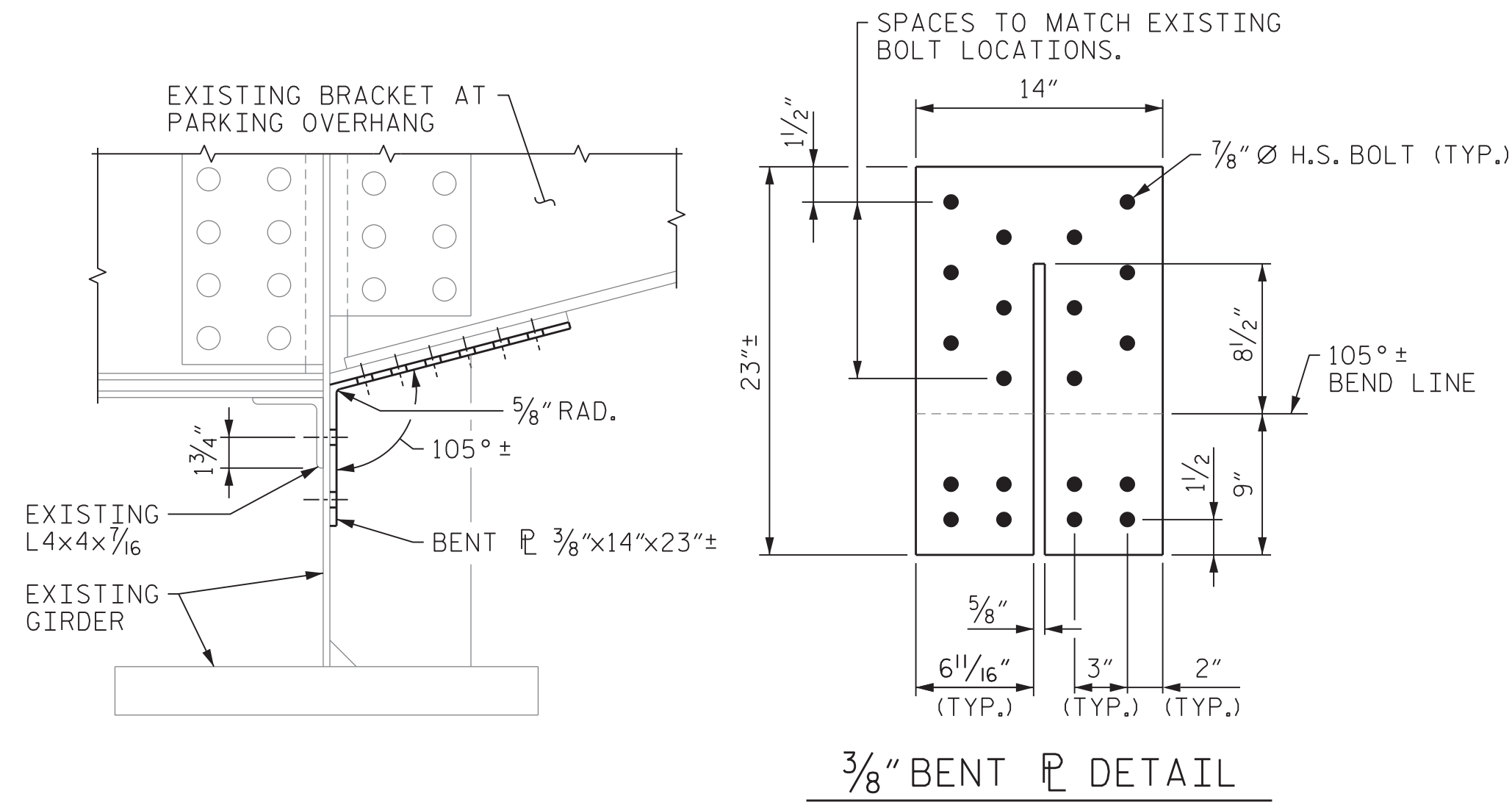
NO LIVE LOAD IN BAY OF REPAIR OR EITHER ADJACENT BAY DURING WELDING.

(4 REQUIRED)

REPAIR ②

AS NECESSARY, REPLACE CORRODED/MISSING NUTS AND BOLTS, AND TIGHTEN LOOSE NUTS AND BOLTS. IF REPAIR OCCURS AT ANCHOR BOLT LOCATION, BUR THREADS AFTER NUTS HAVE BEEN TIGHTENED.

(APPROX. 90 TOTAL BOLTS TO BE REPLACED ON APPROACH SPANS)



REPAIR ③

LOCATED AT PARKING AREAS

CLOSE PARKING AREA TO TRAFFIC WHILE PERFORMING REPAIR ③.

REPAIR ONE BRACKET AT A TIME.

BEFORE PAINTING, APPLY SEALANT AROUND BENT PLATE.

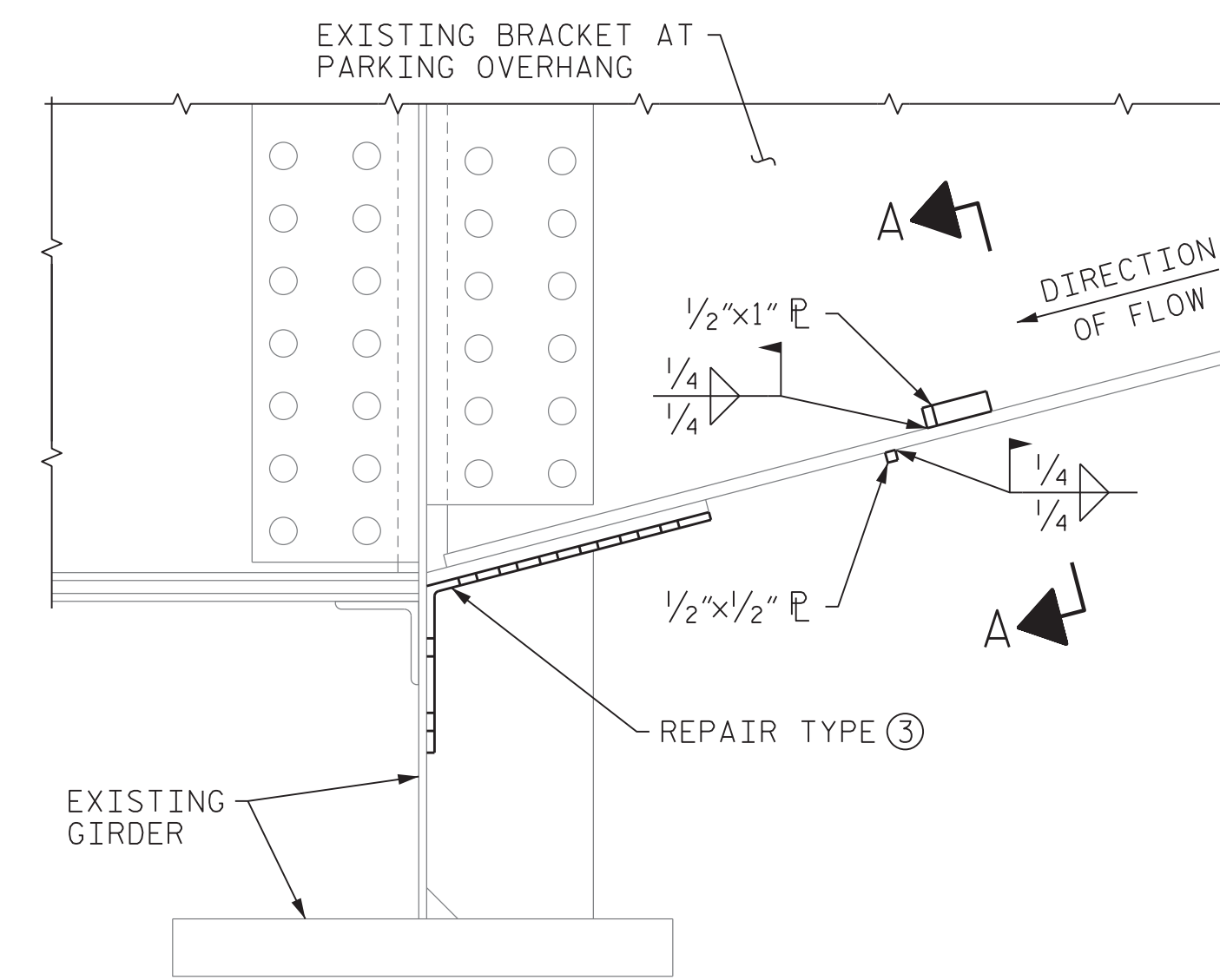
(4 REQUIRED)

BOLT LEGEND

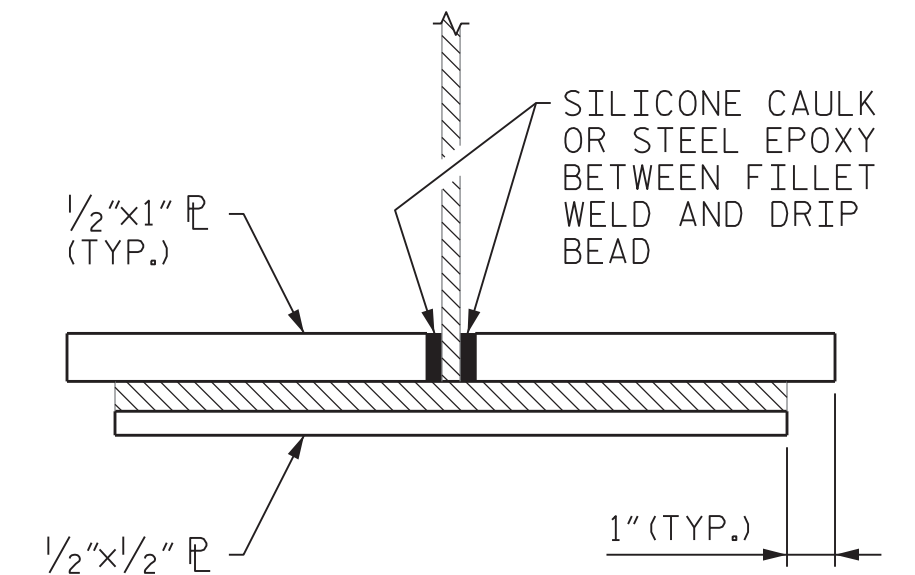
- - EXISTING FASTENER
- - NEW H.S. BOLT IN EXISTING HOLE
- - NEW H.S. BOLT IN NEW HOLE

NOTES:

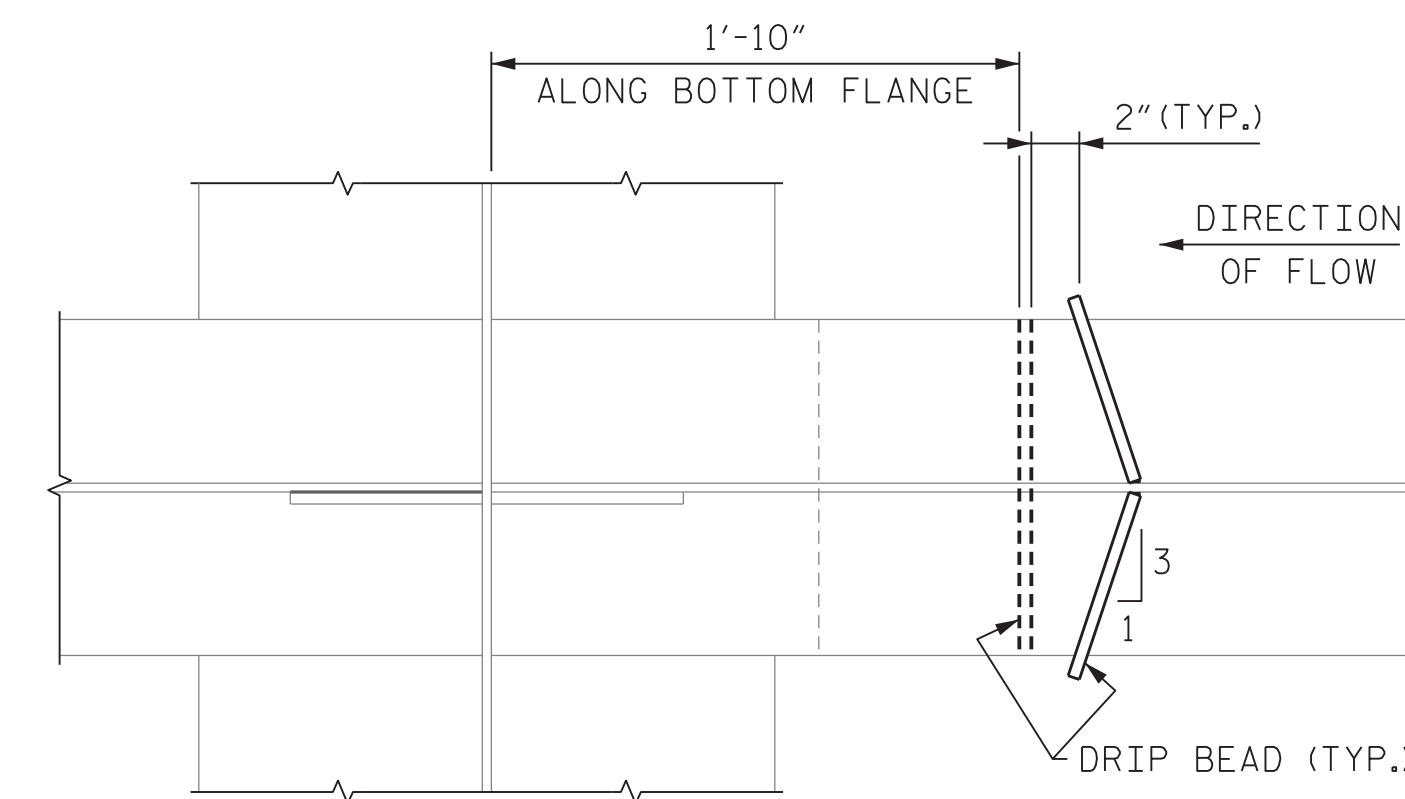
PERFORM ALL REPAIRS PRIOR TO OVERALL CLEANING AND PAINTING.



ELEVATION



SECTION A-A



PART PLAN - BOTTOM FLANGE

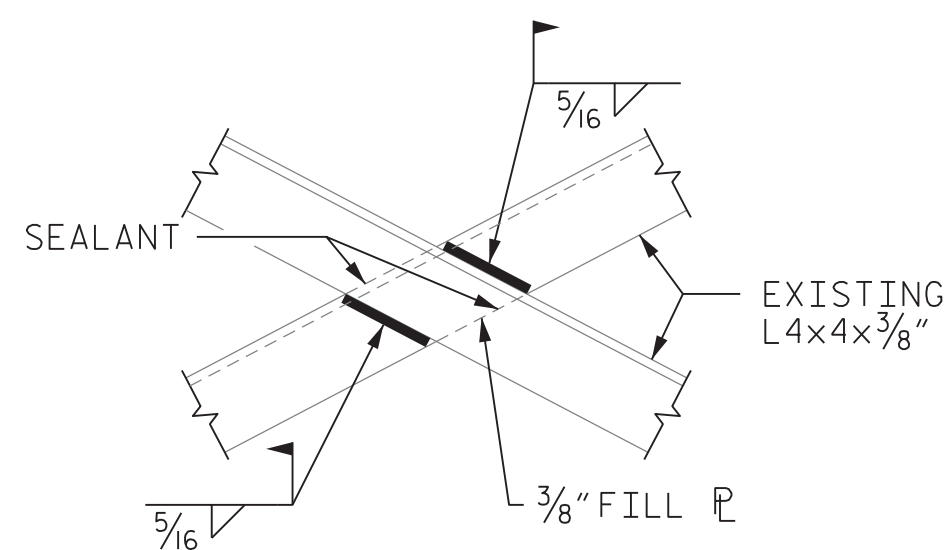
REPAIR ⑤

REPAIR TO BE MADE AT ALL CANTILEVERED BRACKETS.

CLOSE PARKING AREA TO TRAFFIC WHILE PERFORMING REPAIR 3.

AFTER WELDING AND BEFORE PAINTING, PLACE SEALANT AROUND DRIP BEADS.

(16 REQUIRED)



REPAIR ④

CLEAN AND RE-WELD CONNECTION BETWEEN ANGLES AND/OR FILL PLATE.

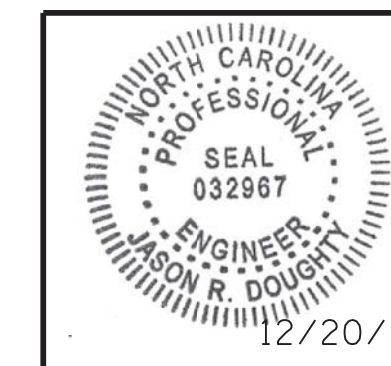
NO LIVE LOAD IN BAY OF REPAIR OR EITHER ADJACENT BAY DURING WELDING.

(2 REQUIRED)

PROJECT NO. 15BPR.15
NEW HANOVER COUNTY
 STATION: _____



333 FAYETTEVILLE STREET, SUITE 505
 RALEIGH, NC 27601
 NC LICENSE NO. C-2979



DocuSigned by:
 Jason R. Doughty
 5F73FA2DEA974E8...

STATE OF NORTH CAROLINA DEPARTMENT OF TRANSPORTATION RALEIGH					
APPROACH SPANS					
STRUCTURAL STEEL REPAIR DETAILS					
REVISIONS					
NO.	BY:	DATE:	NO.	BY:	DATE:
1			3		
2			4		
SHEET NO.					S-37
TOTAL SHEETS					66

12/21/2017 400_073_368202_SML_SSR4_640013.dgn

DESIGNED BY:	J. BORUTA	DATE:	NOV 2017
DRAWN BY:	K. WHITE	DATE:	NOV 2017
CHECKED BY:	B. LOFLIN	DATE:	DEC 2017
DESIGN ENGINEER OF RECORD:	J. DOUGHTY	DATE:	DEC 2017

**DOCUMENT NOT CONSIDERED FINAL
 UNLESS ALL SIGNATURES COMPLETED**