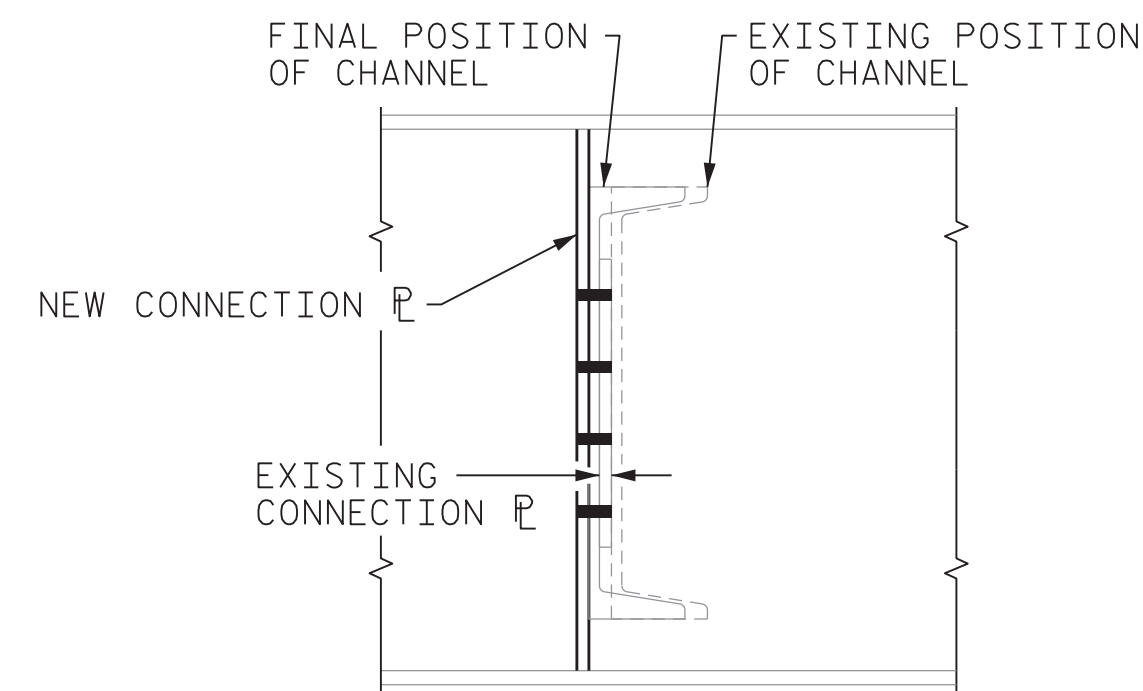
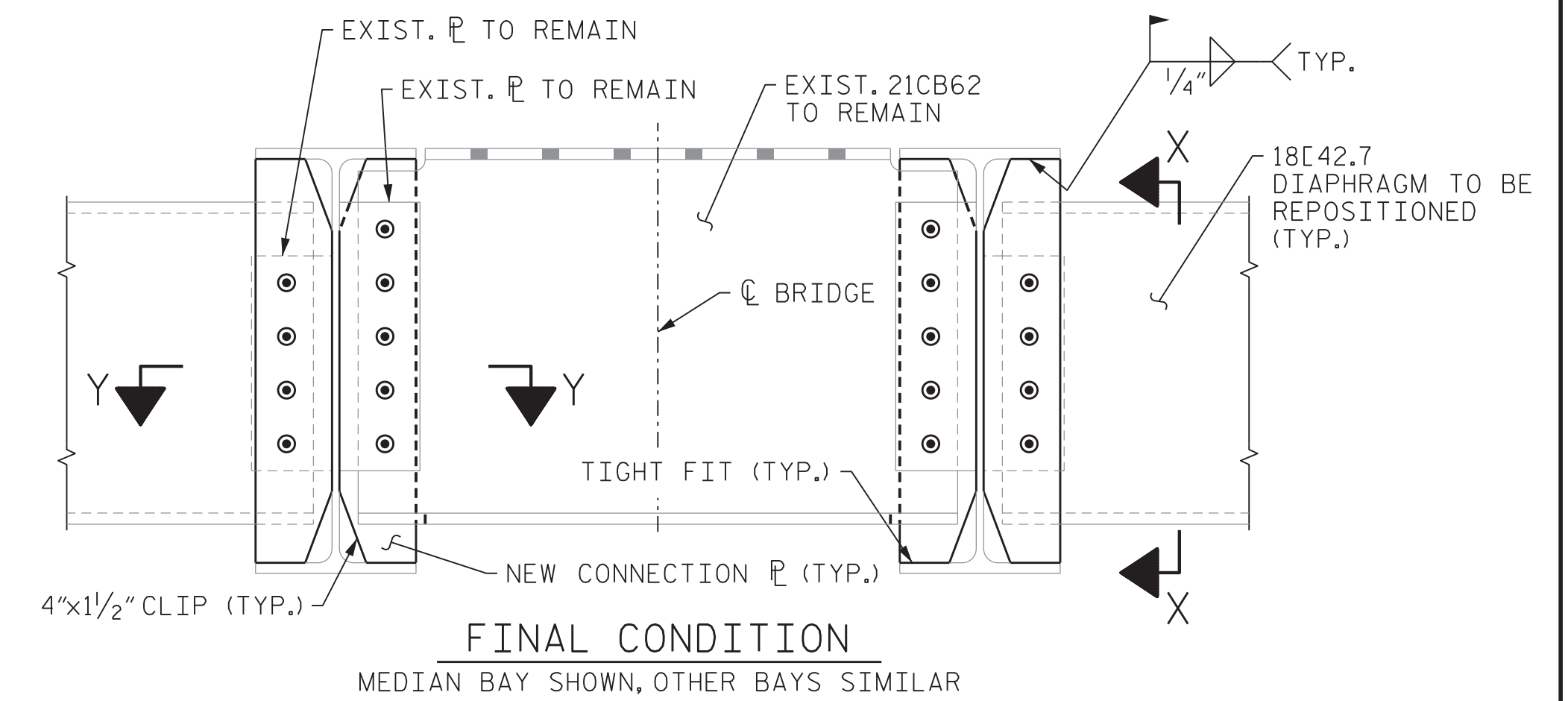


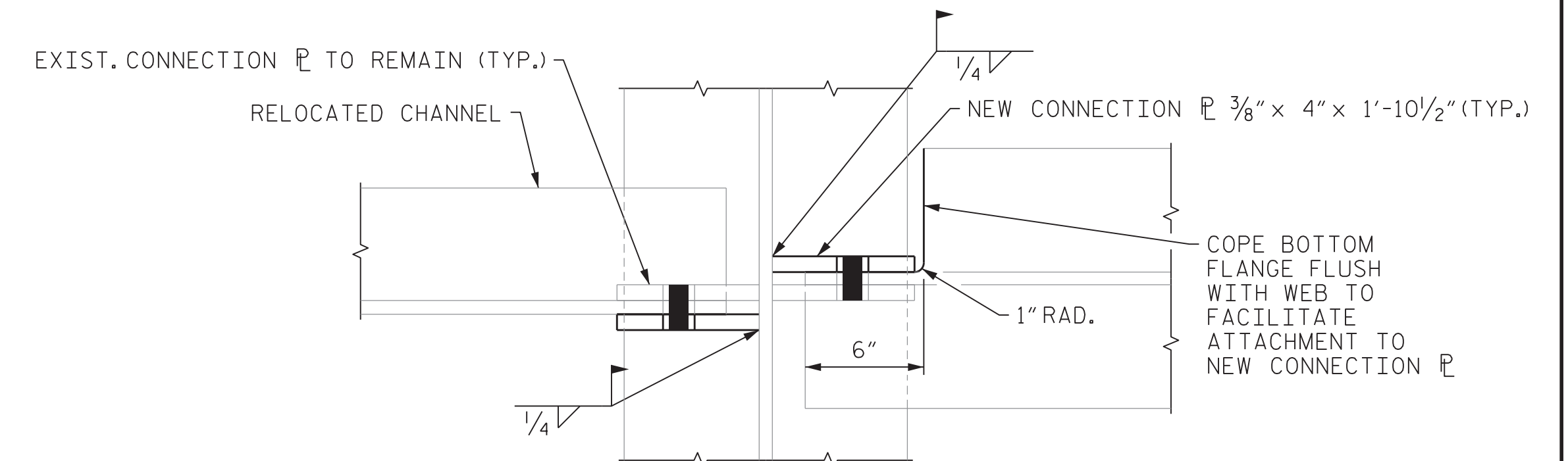
STRINGER END DETAILS



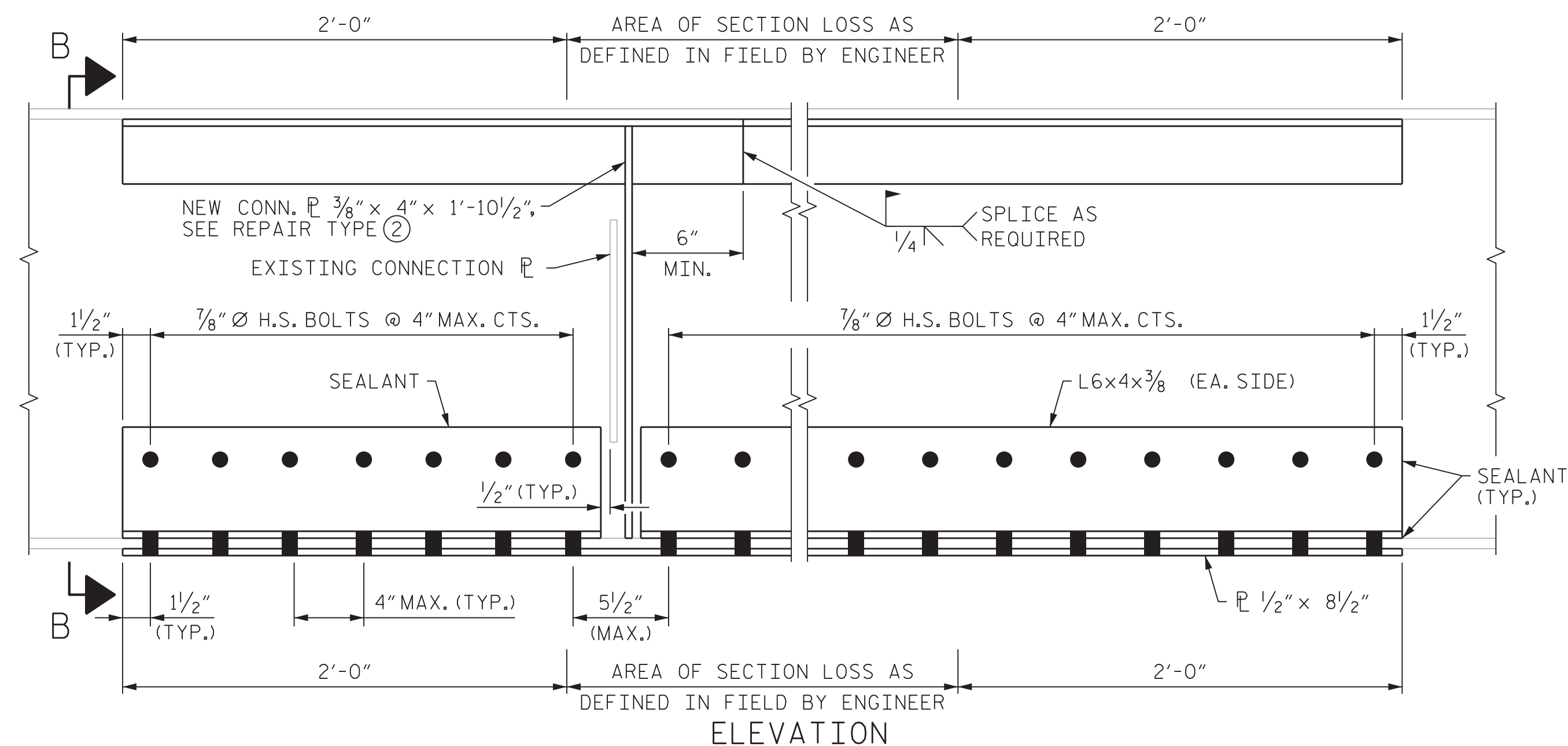
SECTION X-X



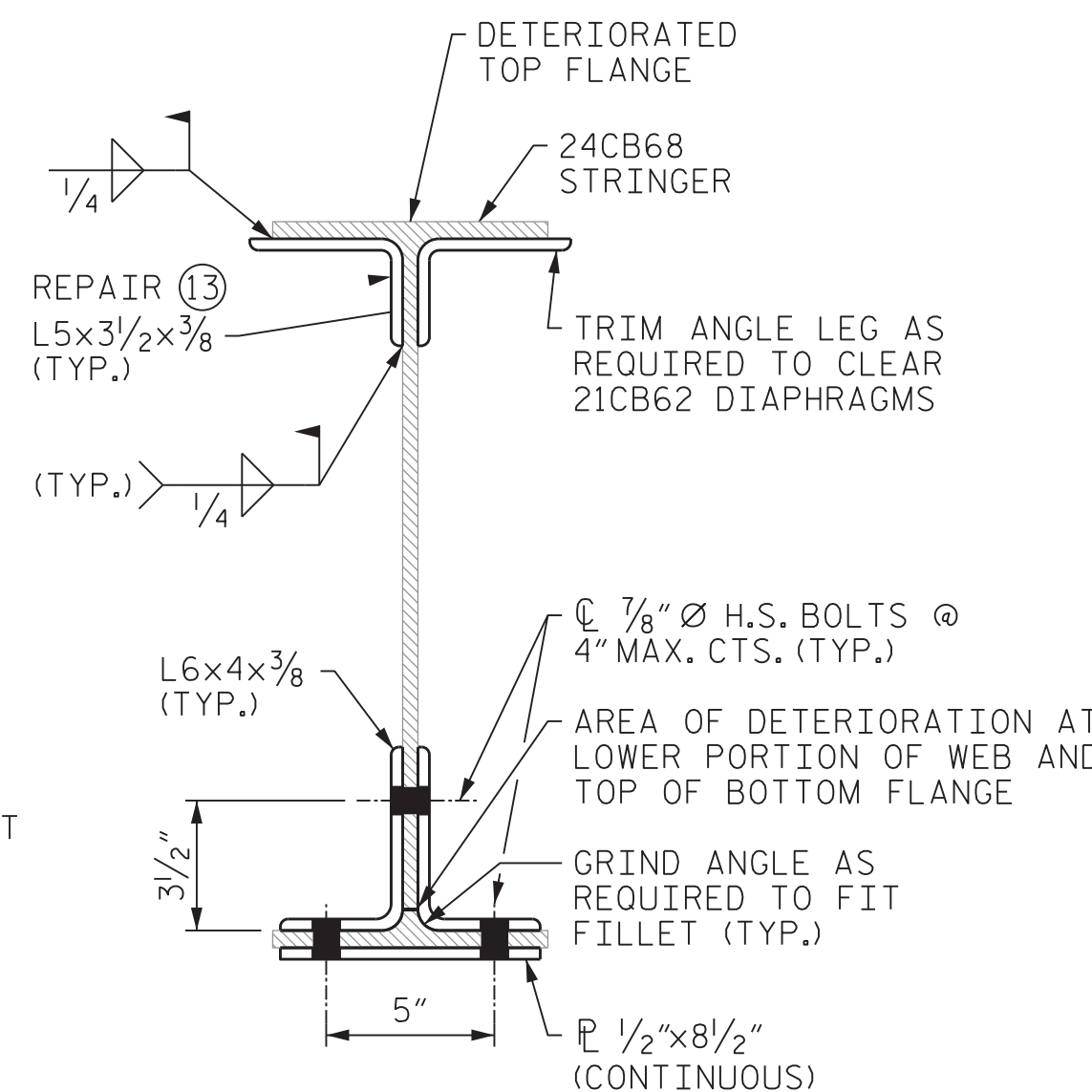
FINAL CONDITION
MEDIAN BAY SHOWN, OTHER BAYS SIMILAR



SECTION Y-Y
STRINGER WEB CRACK RETROFIT



STRINGER WEB REPAIR



SECTION B-B

REPAIR (2)
168 LOCATIONS

IF LIVE LOAD IS PRESENT, ADJACENT BAYS SHALL NOT BE REPAIRED SIMULTANEOUSLY.
IF REPAIR (2) OCCURS AT THE SAME LOCATION AS REPAIR (13), INSTALL REPAIR (13) FIRST AND ATTACH THE CONNECTION PLATE TO THE ANGLE INSTEAD OF THE EXISTING STRINGER TOP FLANGE.

PROCEDURE FOR CHANNEL DIAPHRAGMS

1. IF LOCATION HAS A CRACK IN STRINGER WEB, DRILL ARREST HOLE(S) SIMILAR TO REPAIR (5).
2. TEMPORARILY SUPPORT DIAPHRAGM.
3. REMOVE BOLTS AND MOVE DIAPHRAGM TO OTHER SIDE OF EXISTING P.
4. INSTALL NEW CONNECTION P.
5. INSTALL NEW BOLTS AND REMOVE TEMPORARY SUPPORT.

REPAIR (3)
15 LOCATIONS (BOTTOM)

REPAIR (13)
5 LOCATIONS (TOP)

NO LIVE LOAD IS PERMITTED WITHIN 6 FEET OF STRINGER BEING REPAIRED. AFTER FIELD DRILLING AND BOLTING OF REPAIR ANGLES AND PLATES IS COMPLETE LIVE LOAD CAN BE PLACED OVER STRINGER BEING REPAIRED.

IN LIEU OF REPAIR (3) AND/OR (13), THE CONTRACTOR MAY REPLACE THE STRINGER WITH A W24x68 WITH THE SAME LENGTH AND DETAILS AS THE EXISTING STRINGERS EXCEPT THAT THE DIAPHRAGM CONNECTIONS SHALL USE CONNECTION PLATES SIMILAR TO THE NEW PLATES SHOWN IN REPAIR 2. THE NEW STRINGER SHALL BE ASTM A-709 GRADE 36 OR 50 AND SHALL BE SHOP PAINTED IN ACCORDANCE WITH THE STANDARD SPECIFICATIONS. THE NEW STRINGERS, HARDWARE AND PAINTING SHALL BE PROVIDED AT NO ADDITIONAL COST TO THE DEPARTMENT.

REPAIR (3) AND (13) MAY OR MAY NOT OCCUR AT THE SAME LOCATION.

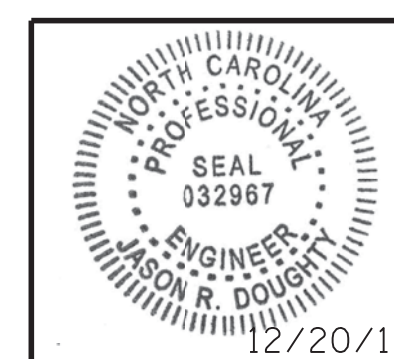
NOTES:
FOR NOTES AND BOLT LEGEND, SEE SHEET 1 OF 3.

PROJECT NO. 15BPR.15
NEW HANOVER COUNTY
STATION: _____

SHEET 2 OF 3



333 FAYETTEVILLE STREET, SUITE 505
RALEIGH, NC 27601
NC LICENSE NO. C-2979



DocuSigned by:
Jason R. Doughty
5F73FA2DEA974E8...

STATE OF NORTH CAROLINA
DEPARTMENT OF TRANSPORTATION
RALEIGH
LIFT SPAN
STRUCTURAL STEEL
REPAIRS

REVISIONS						SHEET NO.
NO.	BY:	DATE:	NO.	BY:	DATE:	TOTAL SHEETS
1			3			5-27
2			4			66

12/20/2017 4:00:05 PM 368202_SML_S5R2_640013.dgn

DESIGNED BY: B. LOFLIN DATE: NOV 2017
DRAWN BY: K. WHITE DATE: NOV 2017
CHECKED BY: J. DOUGHTY DATE: DEC 2017
DESIGN ENGINEER OF RECORD: J. DOUGHTY DATE: DEC 2017

DOCUMENT NOT CONSIDERED FINAL
UNLESS ALL SIGNATURES COMPLETED