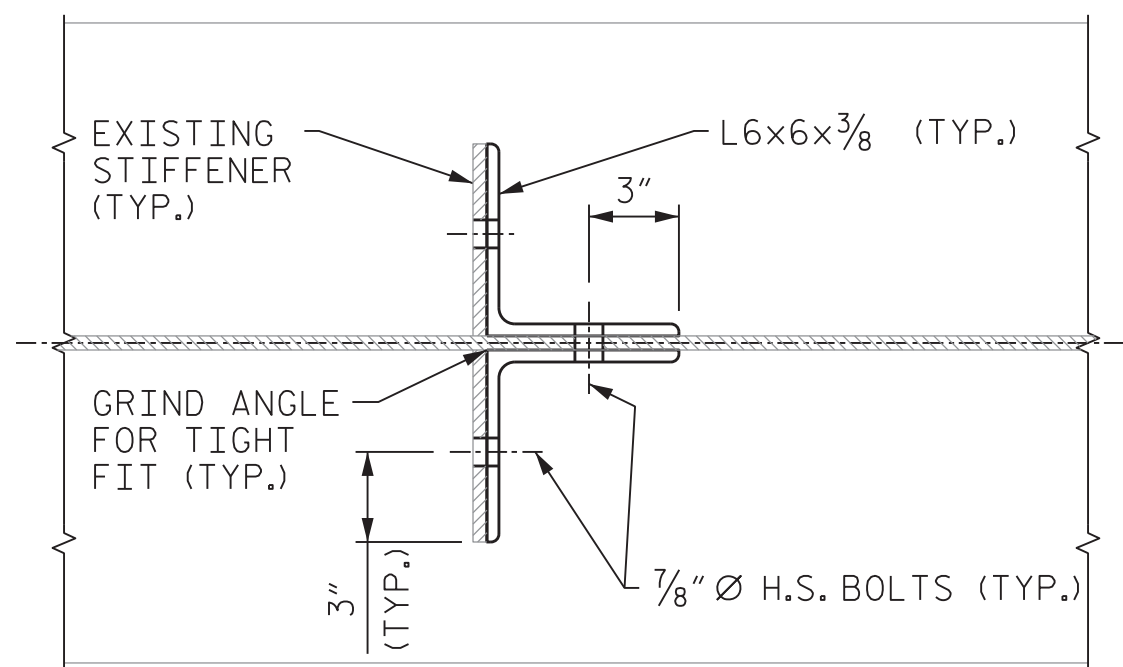
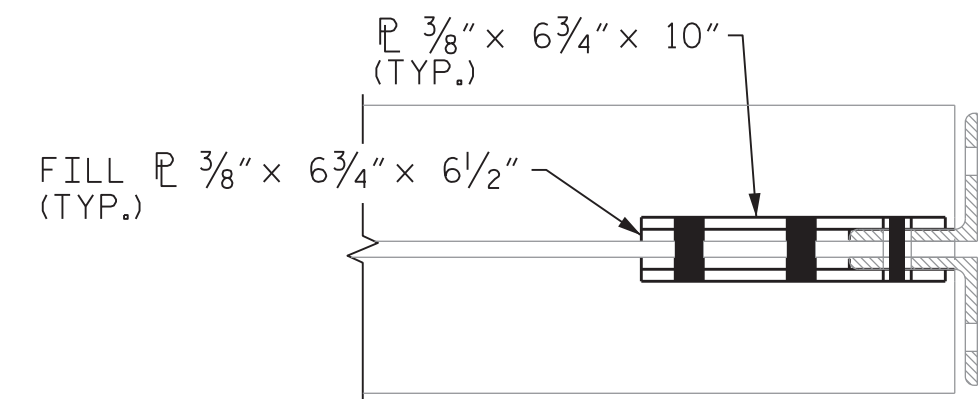


FLOORBEAM STIFFENER \bar{P} REMOVAL



SECTION X-X



SECTION A-A

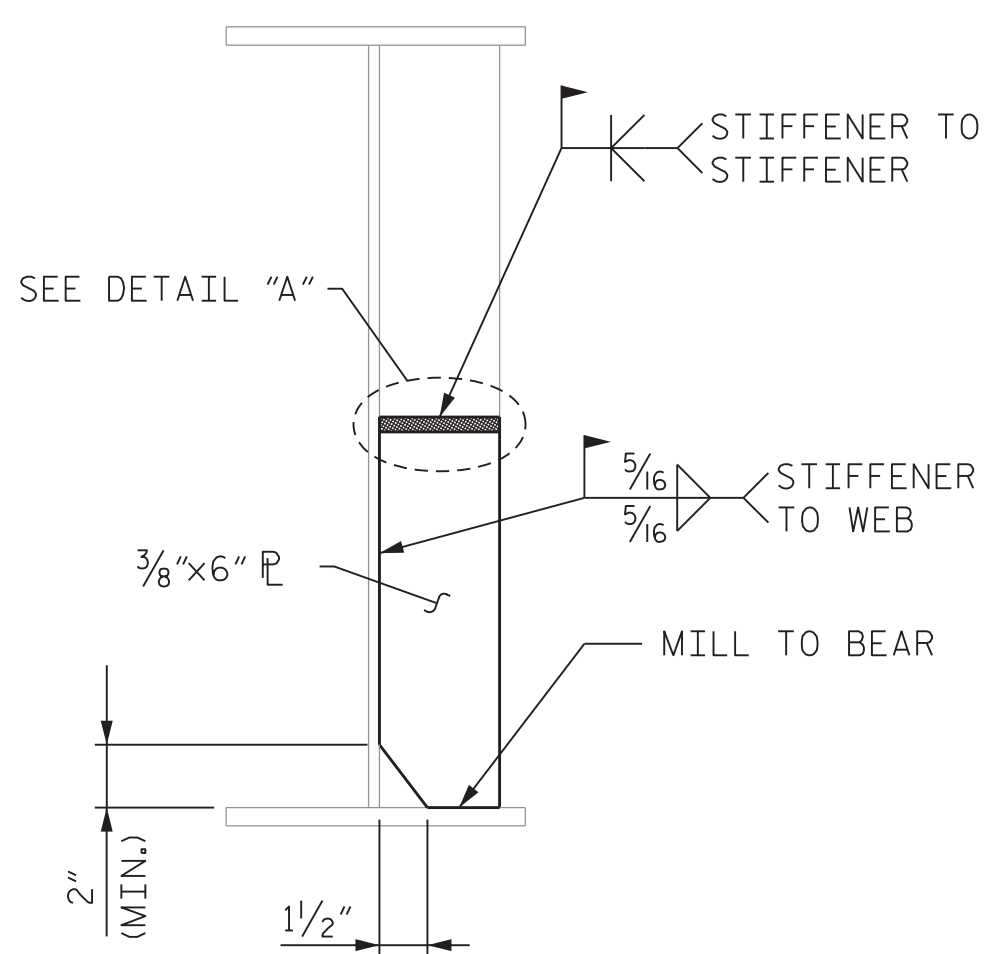
NOTES:

STRUCTURAL STEEL REPAIRS SHOWN ON THIS SHEET SHALL BE PAID FOR UNDER STRUCTURAL STEEL FOR REPAIRS. SEE SPECIAL PROVISIONS.

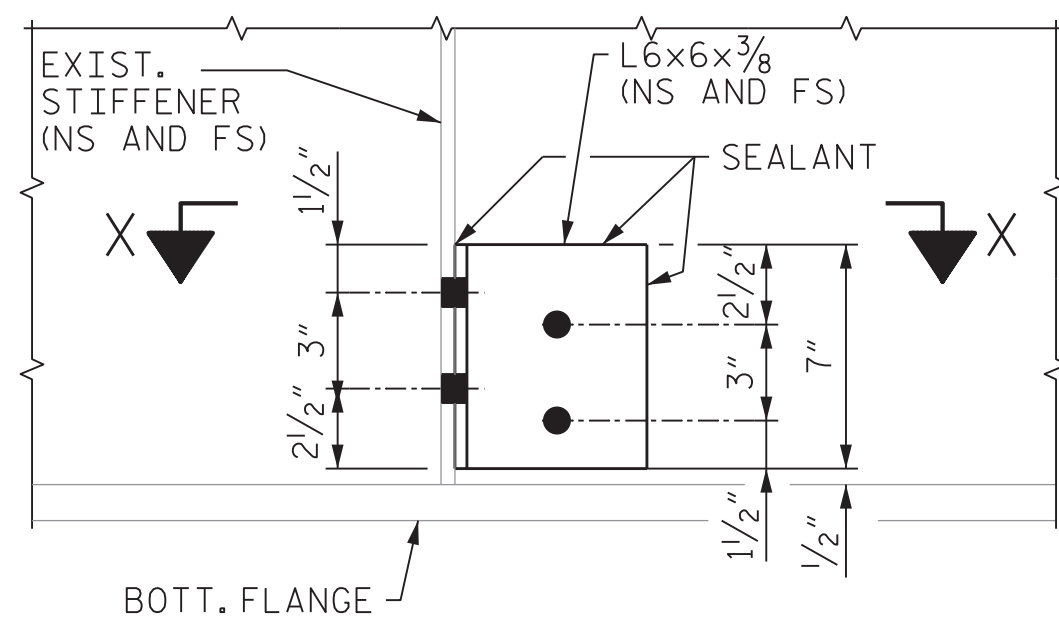
FOR CLEANING AND PAINTING AND MATERIAL REQUIREMENTS, SEE SPECIAL PROVISION FOR STRUCTURAL STEEL FOR REPAIRS.

BOLT LEGEND

- - EXISTING FASTENER
- - NEW H.S. BOLT IN EXISTING HOLE
- - NEW H.S. BOLT IN NEW HOLE



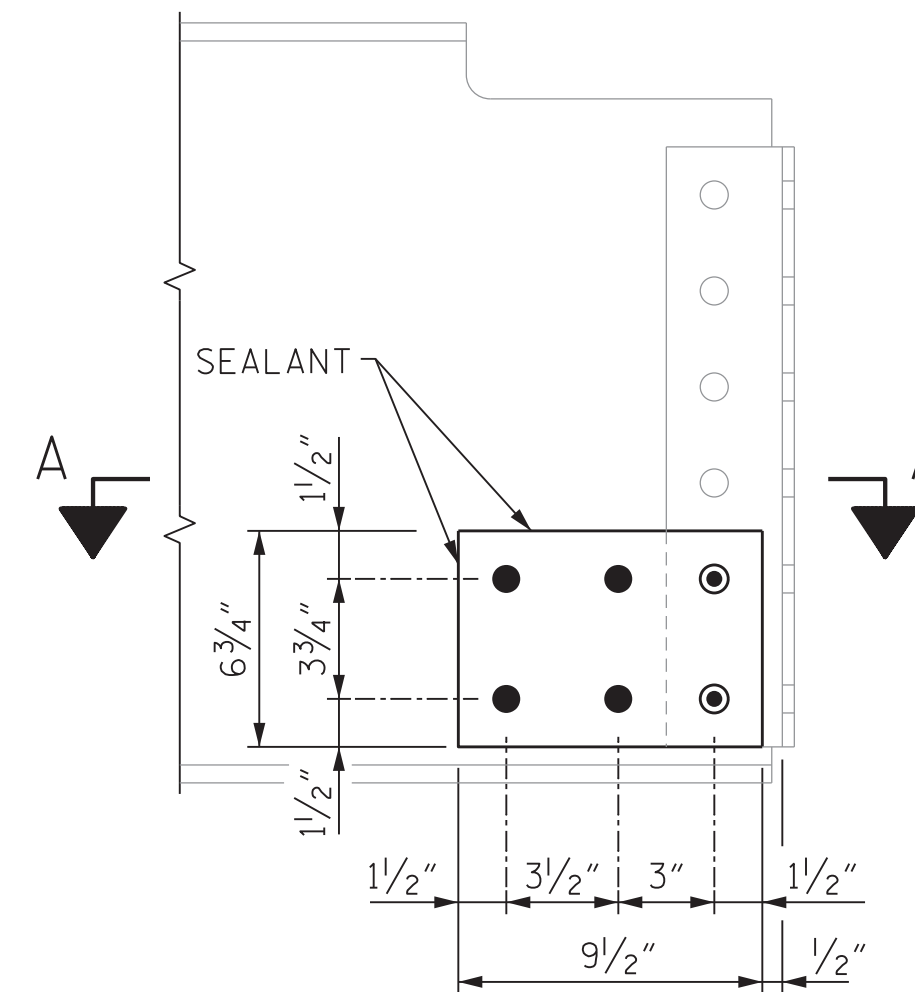
FLOORBEAM STIFFENER \bar{P} REPAIR



ELEVATION
FLOORBEAM WEB REPAIR

REPAIR 6

3 LOCATIONS



ELEVATION
STRINGER END REPAIR

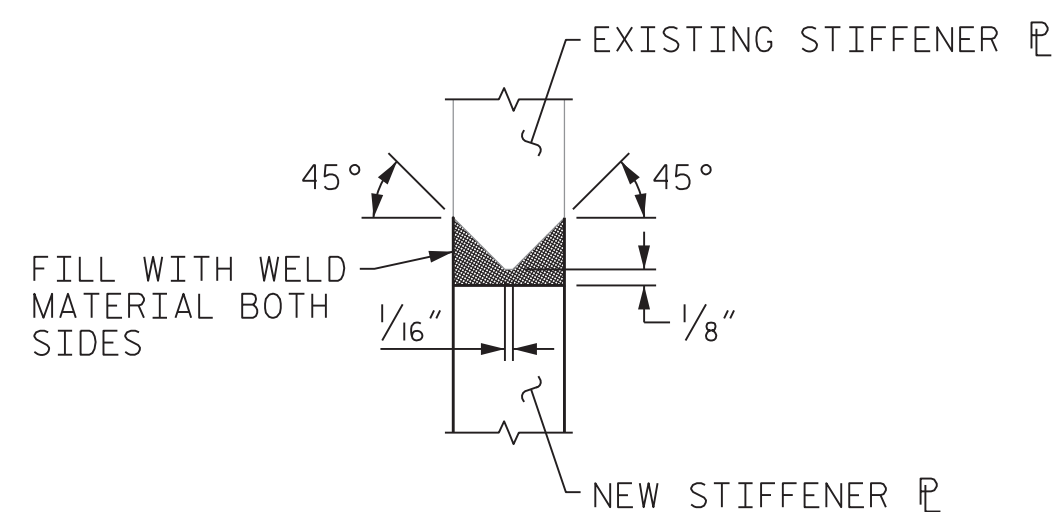
REPAIR 7

2 LOCATIONS

WHEN PERFORMING THIS REPAIR, NO LIVE LOAD SHALL BE PRESENT WITHIN 6 FEET OF STRINGER BEING REPAIRED.

BOLT REPLACEMENT TABLE	
LOCATION	No. OF BOLTS
LO GUSSET	2
LO BEARING	1
ROLLER ASSEMBLY COVER PLATE	10
CENTER GUSSET AT FLOORBEAM 1	2
STRINGER 1 AT FLOORBEAM 4	2
CENTER GUSSET AT FLOORBEAM 6	1
CENTER GUSSET AT FLOORBEAM 7	1
CENTER GUSSET AT FLOORBEAM 9	4
U10 GUSSET	1
L10 GUSSET	10

REPAIR 4

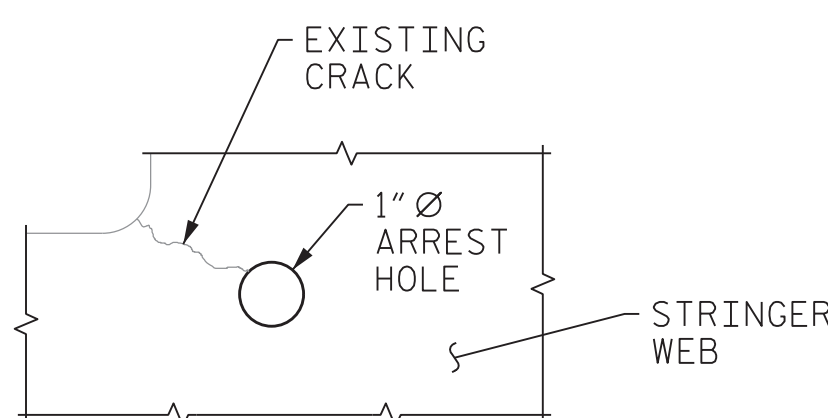


DETAIL A

REPAIR 1

9 LOCATIONS

NO LIVE LOAD SHALL BE PRESENT ON THE LIFT SPAN WHEN PERFORMING THIS REPAIR.



CRACK ARREST HOLE

REPAIR 5

EDGE OF 1" \varnothing FIELD-DRILLED HOLE SHALL INTERSECT END OF CRACK

2 LOCATIONS

PROJECT NO. 15BPR.15
NEW HANOVER COUNTY

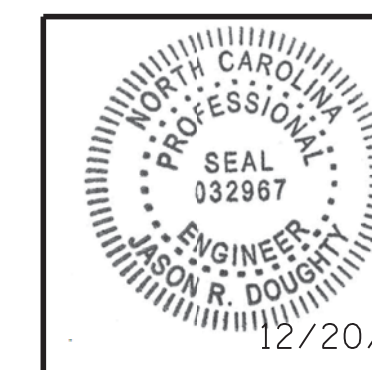
STATION: _____

SHEET 1 OF 3

STATE OF NORTH CAROLINA
DEPARTMENT OF TRANSPORTATION
RALEIGH
LIFT SPAN
STRUCTURAL STEEL
REPAIRS



333 FAYETTEVILLE STREET, SUITE 505
RALEIGH, NC 27601
NC LICENSE NO. C-2979



DocuSigned by:
Jason R Doughty
5F73FA2DEA974E8

REVISIONS						SHEET NO.
NO.	BY:	DATE:	NO.	BY:	DATE:	S-26
1			3			TOTAL SHEETS
2			4			66

DOCUMENT NOT CONSIDERED FINAL
UNLESS ALL SIGNATURES COMPLETED

12/20/2017 4:00:05 PM 368202_SMU_SSRL_640013.dgn

DESIGNED BY: B. LOFLIN DATE: NOV 2017
DRAWN BY: K. WHITE DATE: NOV 2017
CHECKED BY: J. DOUGHTY DATE: DEC 2017
DESIGN ENGINEER OF RECORD: J. DOUGHTY DATE: DEC 2017