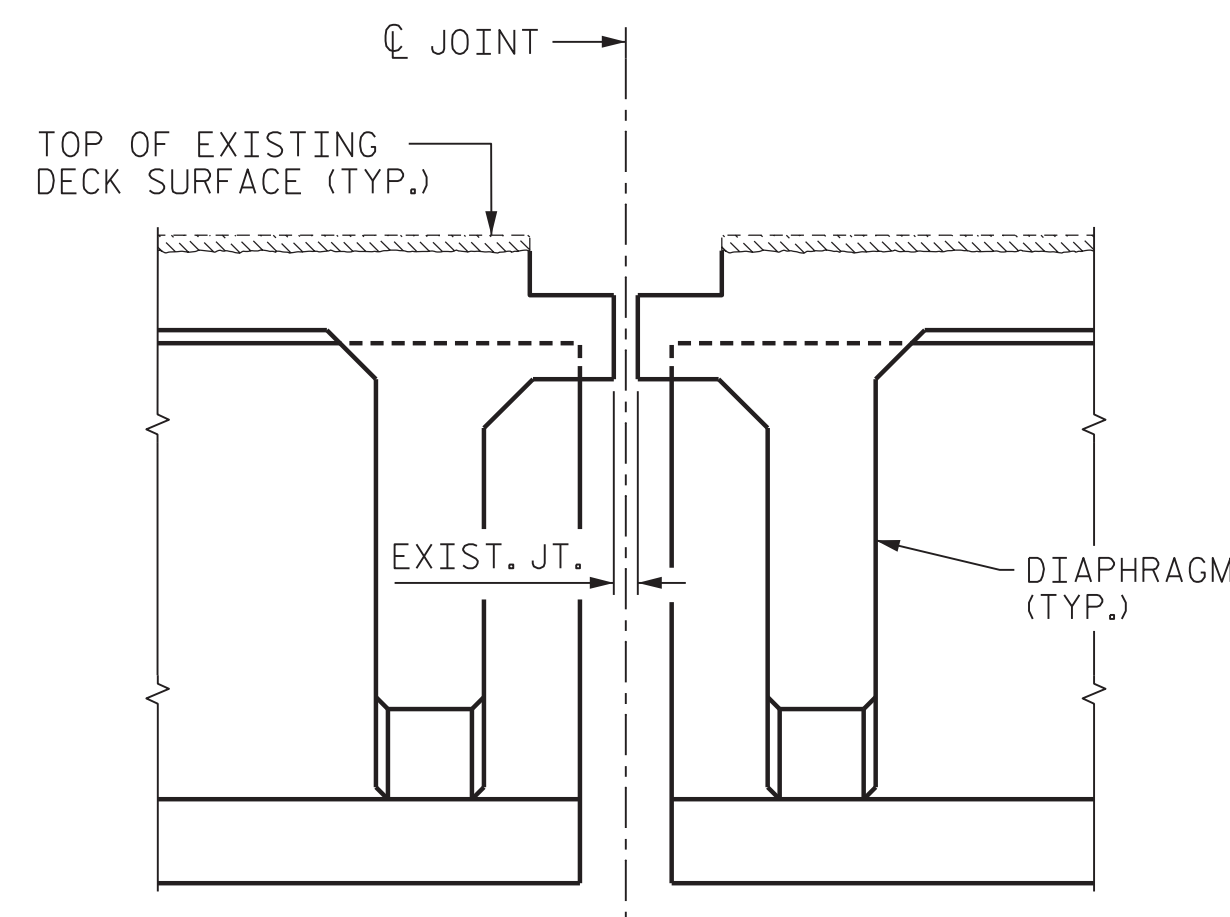
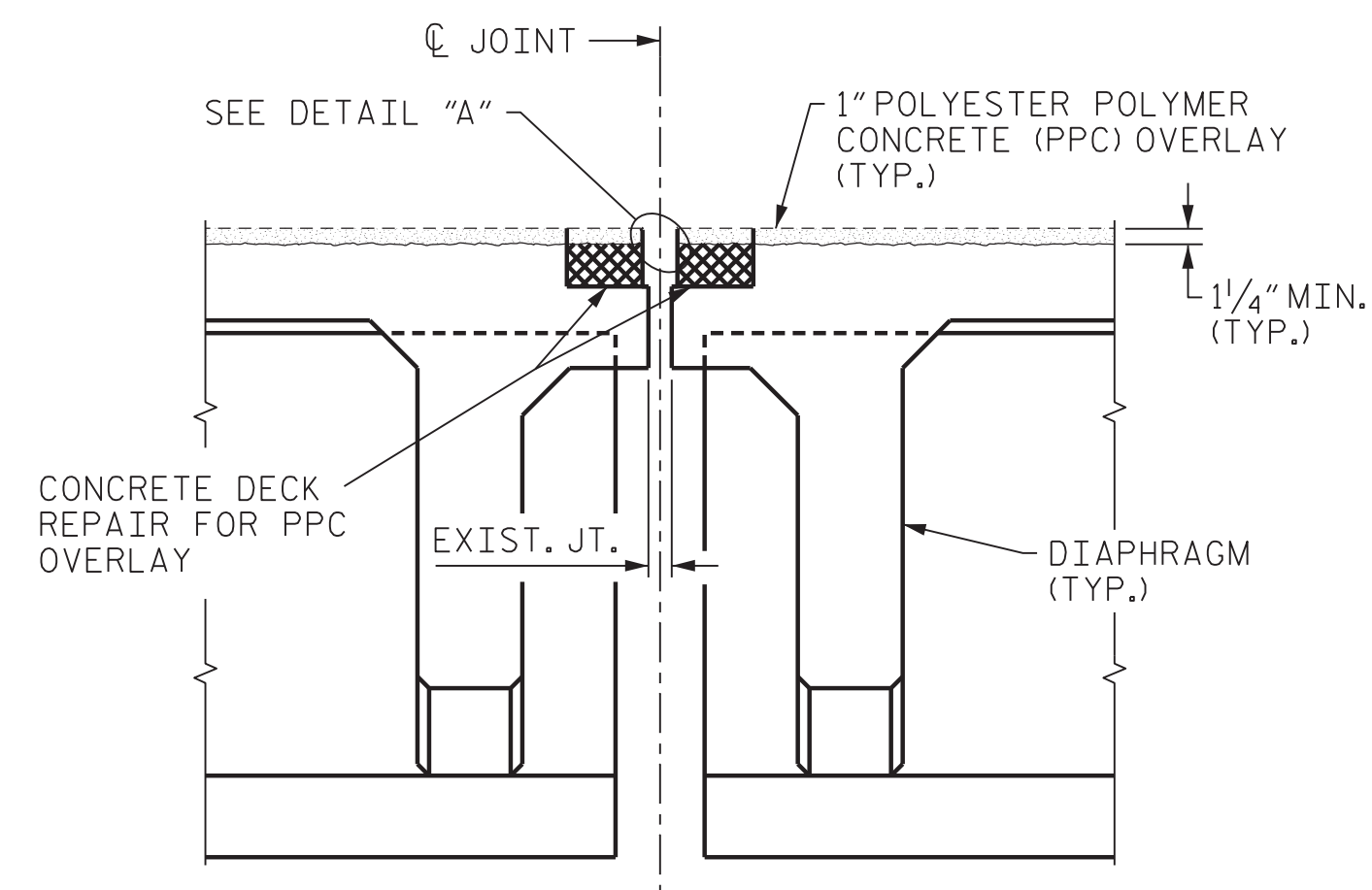


EXISTING JOINT



EXISTING JOINT AND DECK DEMOLITION



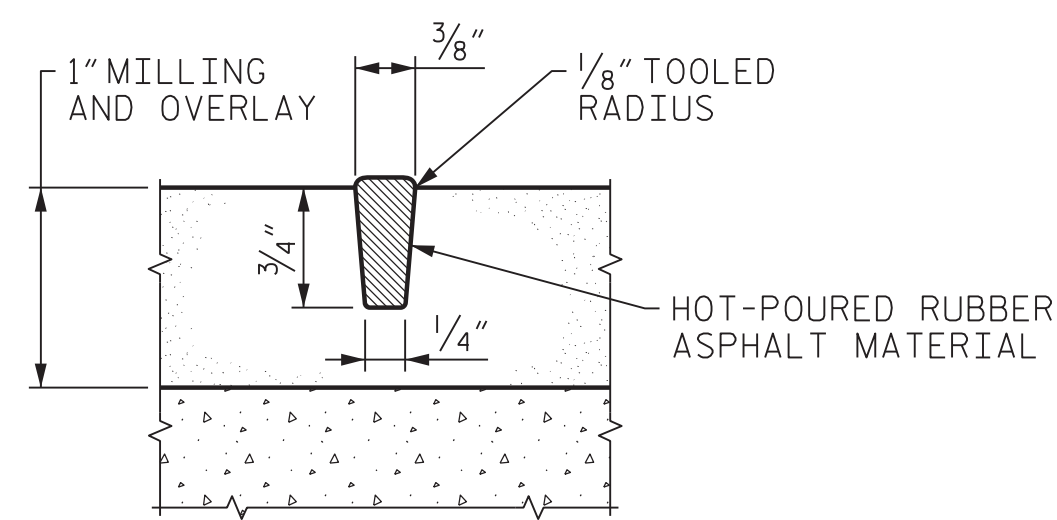
PROPOSED JOINT

**JOINT INSTALLATION SEQUENCE AT JOINT LOCATIONS WITH DECK REPAIRS**

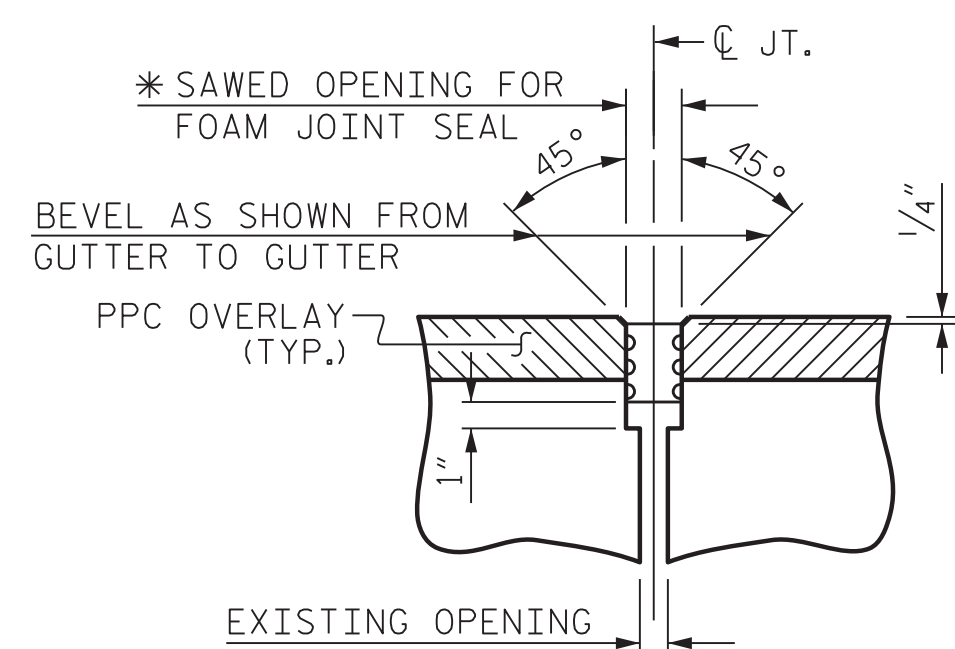
CONCRETE GIRDER LOCATION SHOWN, STEEL GIRDER LOCATION SIMILAR

BENT NO.	SAWED JOINT OPENING @ 70°F [IN]	UNCOMPRESSED SEAL WIDTH [IN]
EB1, 2-11, 16, 19, 22-33, EB2, RAMP B EB	1.75	2.25
1, 12, 20, 21	2.5	3

**SAWED JOINT OPENINGS**



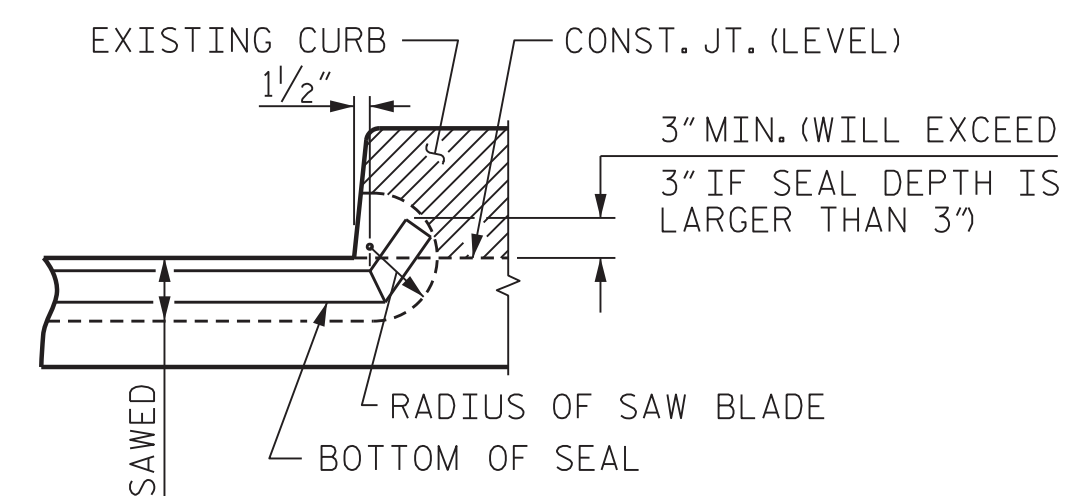
(DUMMY JOINT AT BENTS 13 AND 14)  
SAW AFTER PPC HAS HARDENED AND PRIOR TO LIVE LOAD ON THE LANES OVERLAID UNDER CLOSURE



\* SAWED OPENING SHALL BE THE GREATER OF THE OPENING SHOWN IN THE TABLE OR THE EXISTING JOINT OPENING PLUS 1/2".

UNCOMPRESSED SEAL WIDTH SHALL BE 1/2" LARGER THAN THE SAWED JOINT OPENING.

CONTRACTOR SHALL FIELD MEASURE JOINTS AND COORDINATE WITH JOINT MANUFACTURER PRIOR TO ORDERING JOINT SEALS OR SAWING OPENINGS.



**SECTION AT CONCRETE CURB**

MEDIAN CURB SHOWN, EXTERIOR CURB SIMILAR

PROJECT NO. 15BPR.15  
NEW HANOVER COUNTY  
STATION: \_\_\_\_\_

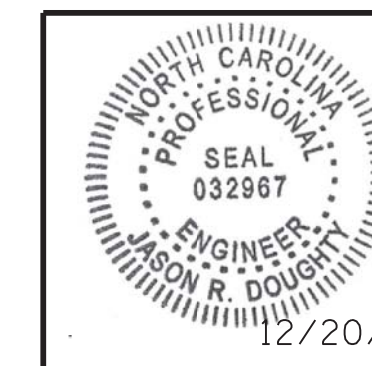
SHEET 2 OF 3

STATE OF NORTH CAROLINA  
DEPARTMENT OF TRANSPORTATION  
RALEIGH

**JOINT REPAIR DETAILS**



333 FAYETTEVILLE STREET, SUITE 505  
RALEIGH, NC 27601  
NC LICENSE NO. C-2979



DocuSigned by:  
*Jason R Doughty*  
5F73FA2DEA974E8...

REVISIONS				SHEET NO.	
NO.	BY:	DATE:	NO.	BY:	DATE:
1			3		
2			4		

TOTAL SHEETS: 66

**DOCUMENT NOT CONSIDERED FINAL UNLESS ALL SIGNATURES COMPLETED**

12/21/2017 4:00:03 PM 368202.SMU\_JT52.640013.dgn

DESIGNED BY: B. LOFLIN DATE: OCT. 2017  
DRAWN BY: C. CORMAN DATE: NOV. 2017  
CHECKED BY: J. BORUTA DATE: DEC. 2017  
DESIGN ENGINEER OF RECORD: J. DOUGHTY DATE: DEC. 2017