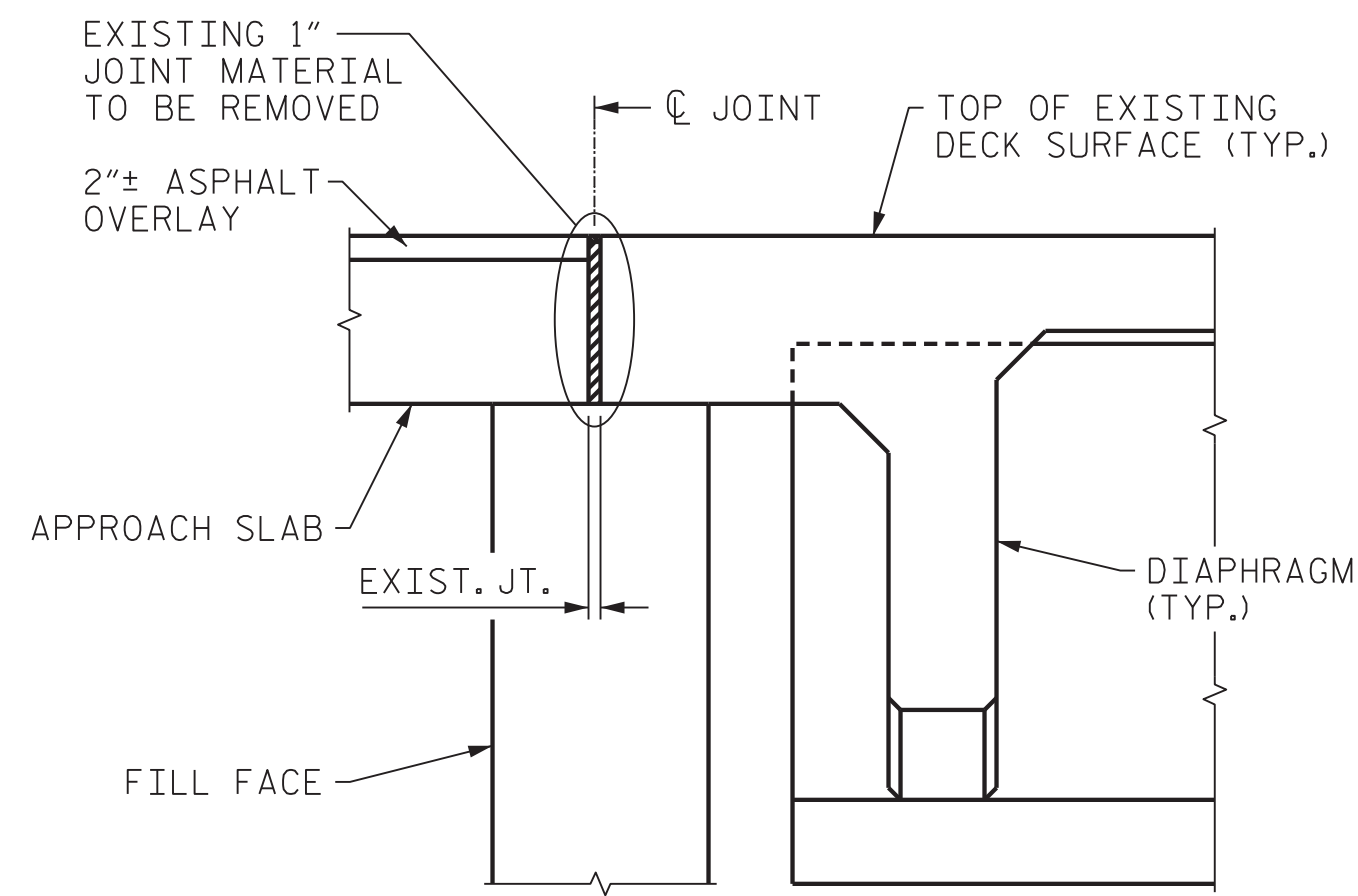


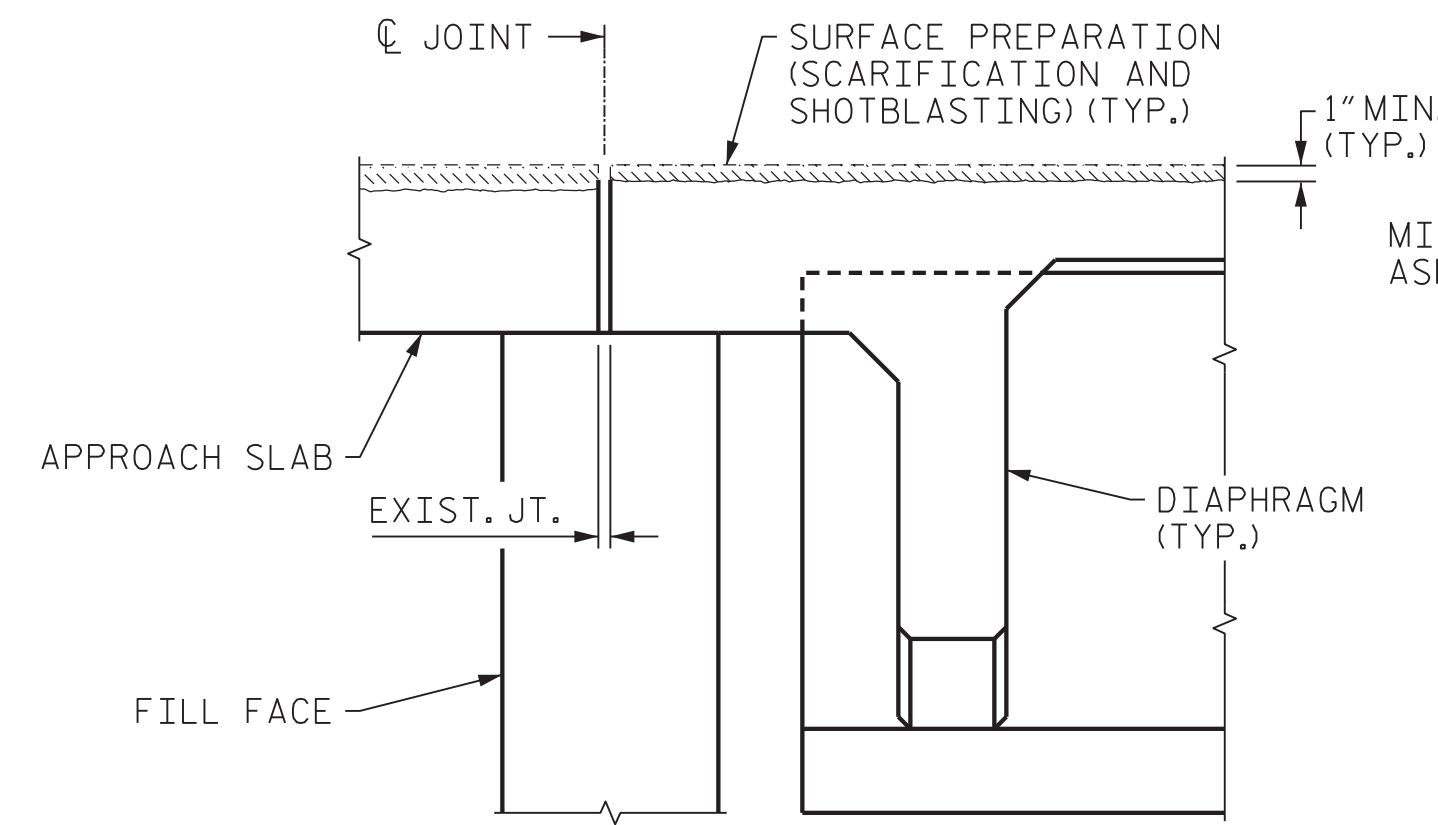
NOTES:

THE INSTALLED FOAM JOINT SEAL SHALL BE WATER TIGHT.

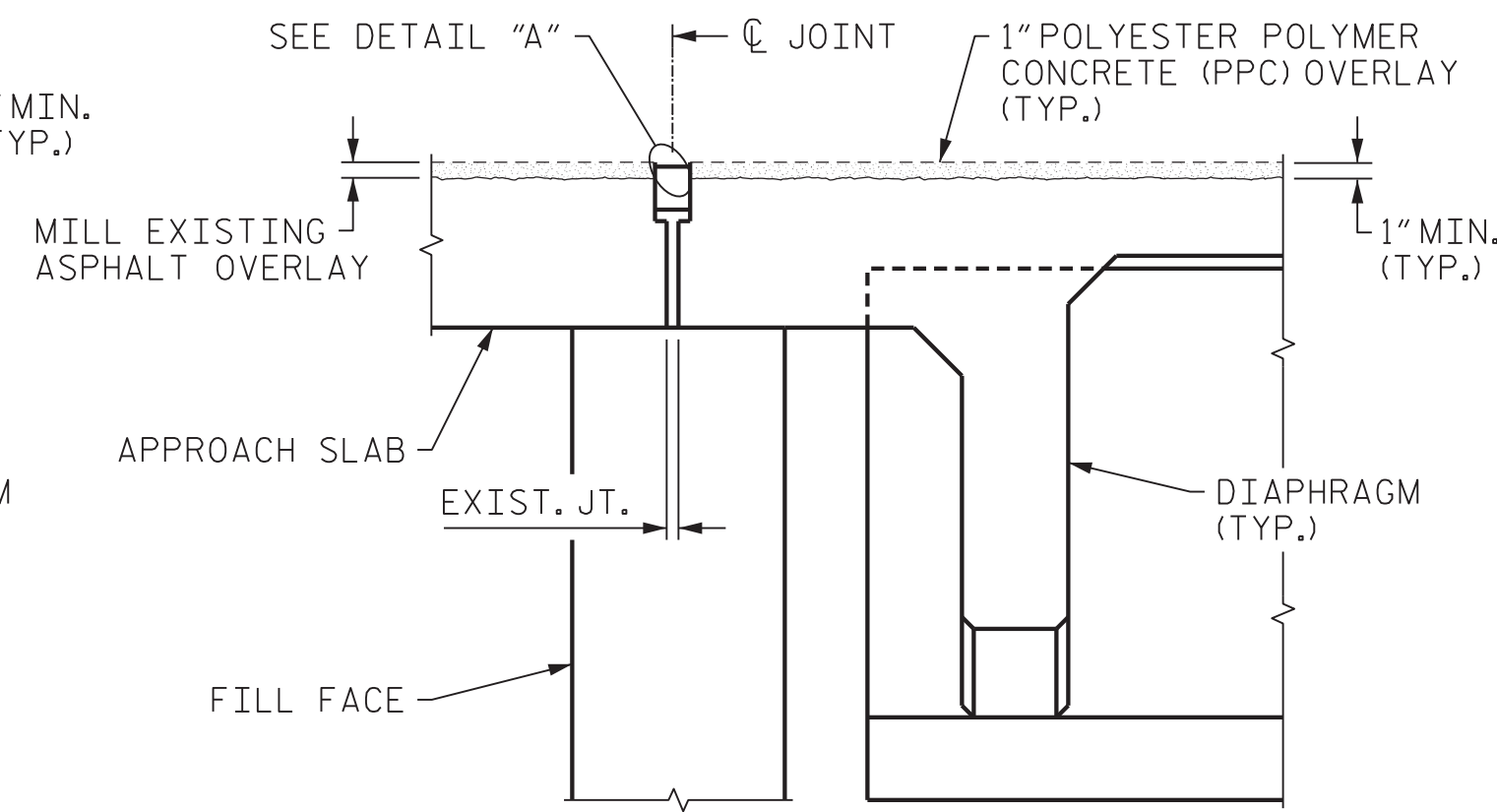
IF CONCRETE REPAIRS ARE REQUIRED AT THE JOINT, THE CONTRACTOR WILL NOT BE PERMITTED TO FORM THE JOINT FOR THE FOAM JOINT SEAL IN LIEU OF SAWING THE JOINT.



EXISTING JOINT

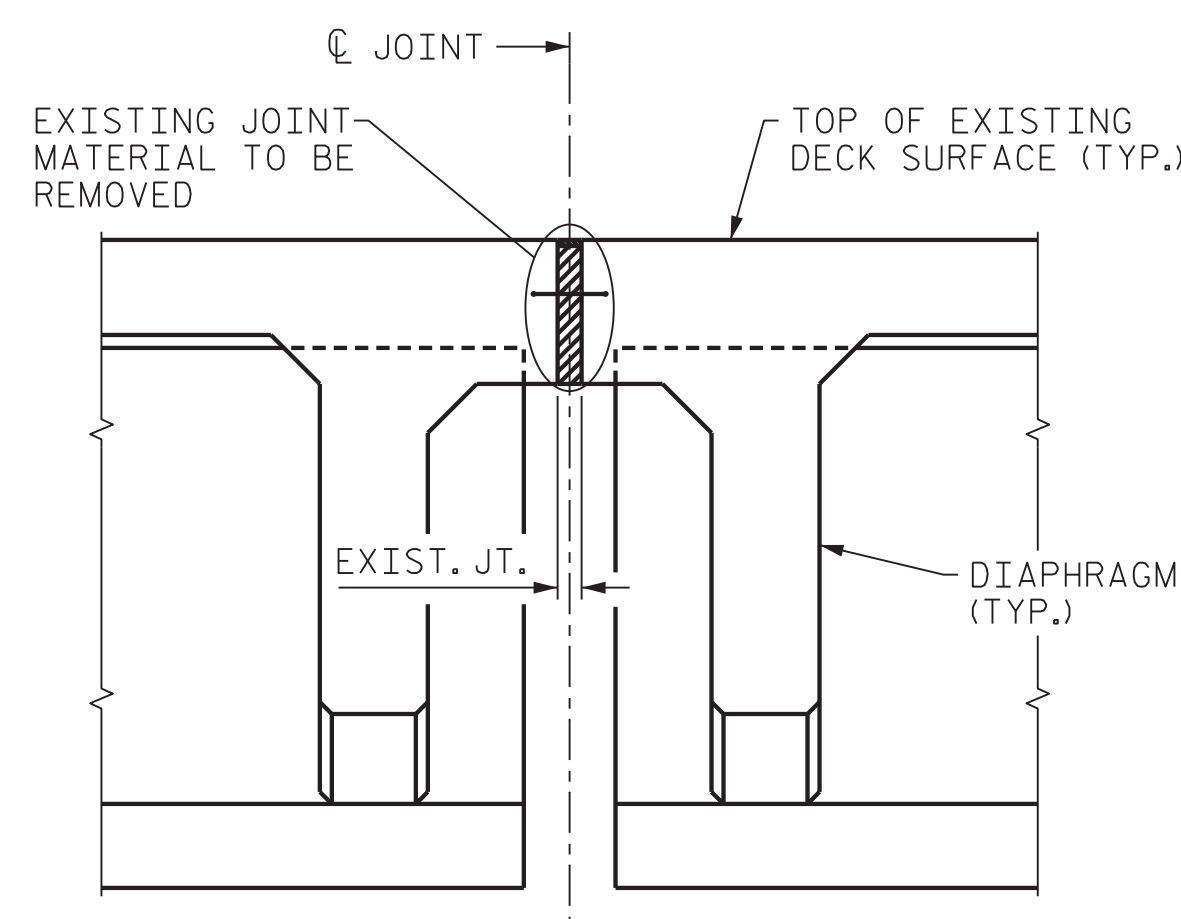


MINIMUM EXISTING JOINT DEMOLITION

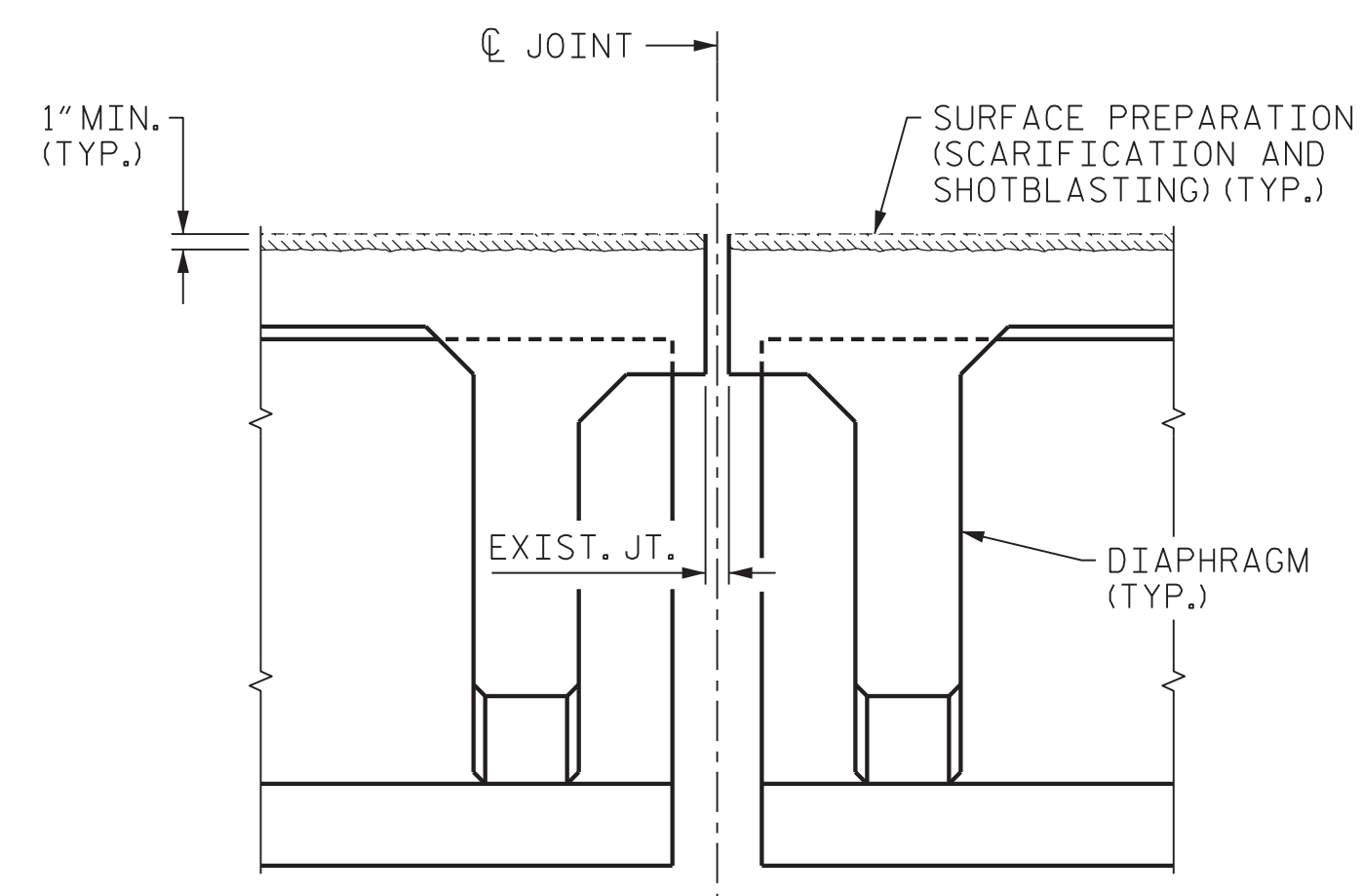


PROPOSED JOINT

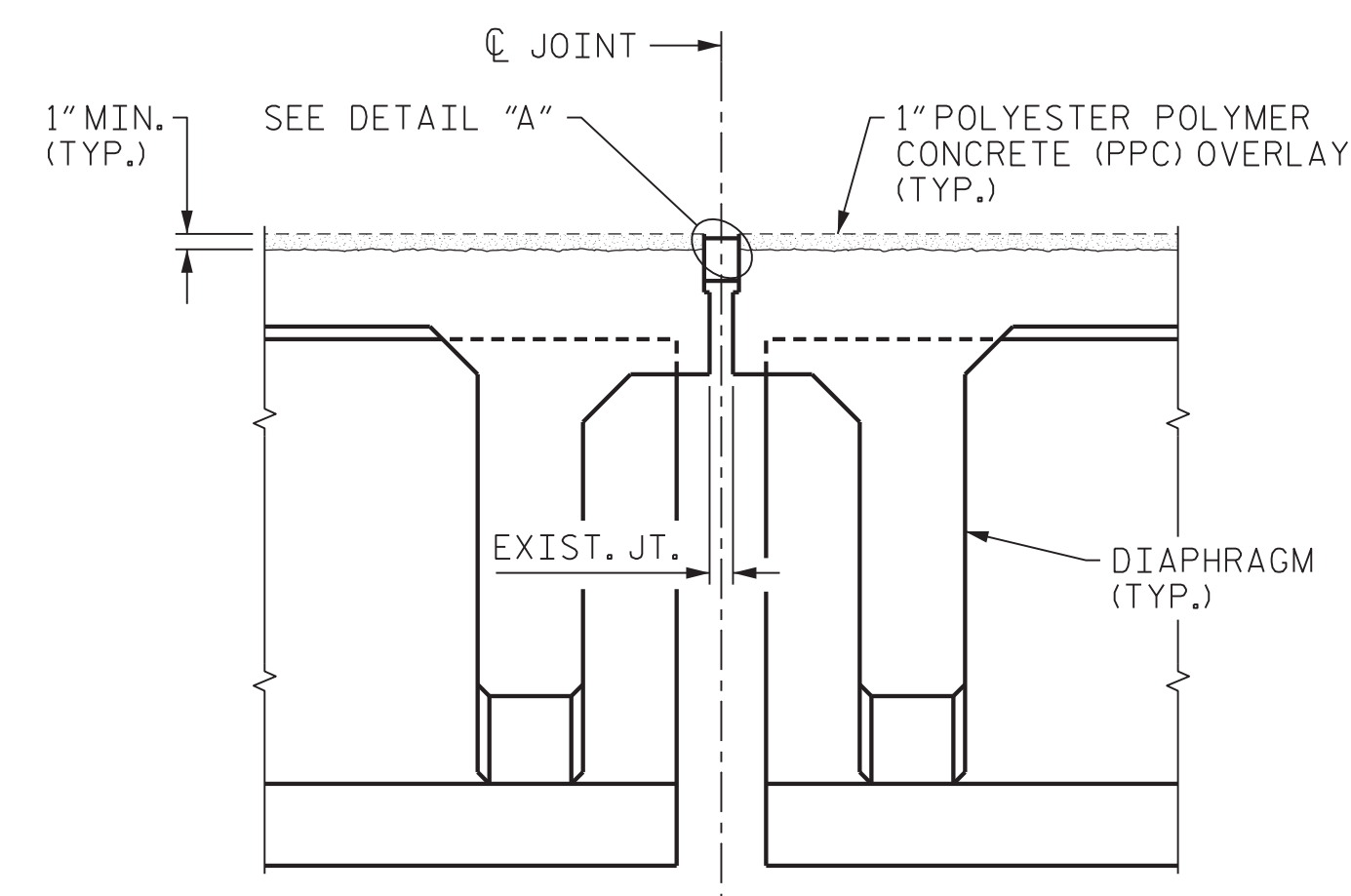
JOINT INSTALLATION SEQUENCE AT END BENTS



EXISTING JOINT



MINIMUM EXISTING JOINT DEMOLITION



PROPOSED JOINT

JOINT INSTALLATION SEQUENCE AT BENTS WITHOUT DECK REPAIRS

CONCRETE GIRDER LOCATION SHOWN, STEEL GIRDER LOCATION SIMILAR

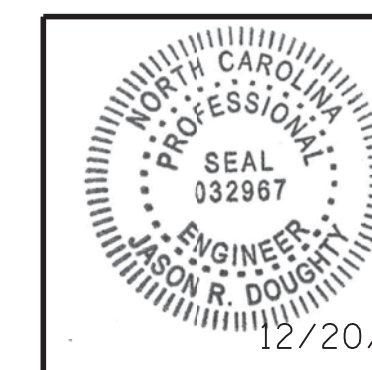
PROJECT NO. 15BPR.15
NEW HANOVER COUNTY

STATION: _____

SHEET 1 OF 3

STATE OF NORTH CAROLINA
 DEPARTMENT OF TRANSPORTATION
 RALEIGH

JOINT REPAIR DETAILS



DocuSigned by:
 Jason R Doughty
 5F73FA2DEA974E8...



333 FAYETTEVILLE STREET, SUITE 505
 RALEIGH, NC 27601
 NC LICENSE NO. C-2979

**DOCUMENT NOT CONSIDERED FINAL
 UNLESS ALL SIGNATURES COMPLETED**

REVISIONS

NO.	BY:	DATE:	NO.	BY:	DATE:
1			3		
2			4		

SHEET NO.
S-18
 TOTAL SHEETS
 66

12/21/2017 400_035_368202_SMU_JTS_640013.dgn

DESIGNED BY: B. LOFLIN DATE: NOV 2017
 DRAWN BY: K. WHITE DATE: NOV 2017
 CHECKED BY: J. BORUTA DATE: DEC 2017
 DESIGN ENGINEER OF RECORD: J. DOUGHTY DATE: DEC 2017