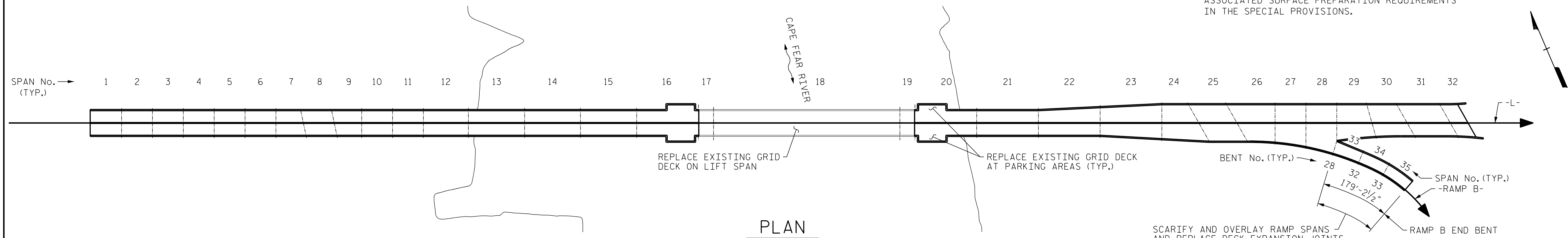


**ELEVATION**

BENT NUMBERS SHOWN MATCH BENT NUMBERING USED IN BRIDGE INSPECTION REPORTS

- \* EXISTING FINGER JOINTS WILL NOT BE REPLACED.
- \*\* SCARIFYING BRIDGE DECK SHALL NOT BE PERFORMED IN SPAN 20. REFER TO EPOXY OVERLAY SYSTEM AND ASSOCIATED SURFACE PREPARATION REQUIREMENTS IN THE SPECIAL PROVISIONS.



**PLAN**

SPAN NUMBERS SHOWN MATCH SPAN NUMBERING USED IN BRIDGE INSPECTION REPORTS.

**SCOPE OF WORK**

**STRUCTURAL:**

1. GRID DECK REPLACEMENT ON LIFT SPAN AND AT PARKING AREAS AT ENDS OF LIFT SPAN.
2. REPLACE EXISTING MEDIAN BARRIER ON APPROACH SPANS AND LIFT SPAN,
3. SCARIFY AND OVERLAY APPROACH SPANS AND TOWER SPANS.
4. EXCEPT FINGER JOINTS AT BENT 15, REPLACE DECK EXPANSION JOINTS ON APPROACH SPANS.
5. RETROFIT EXISTING LIVE LOAD BEARING AT NORTHEAST CORNER OF LIFT SPAN.
6. PERFORM SUPERSTRUCTURE AND SUBSTRUCTURE REPAIRS AS SHOWN IN THE PLANS.

**MECHANICAL:**

1. REPLACE CORRODED FASTENERS AT REST PIER MACHINERY AREAS AND LIFTING GIRDERS.
2. REPLACE ALL SPAN LOCK SHAFT COUPLING SEALS, GASKETS AND FASTENERS.
3. REPLACE UPPER AIR BUFFERS.
4. CLEAN AND LUBRICATE COUNTERWEIGHT ROPES.
5. PERFORM AUXILIARY COUNTERWEIGHT AND SPAN GUIDE REPAIRS. SEE "MA" SHEETS.

**CLEANING AND PAINTING:**

1. EXISTING STEEL SUPERSTRUCTURE APPROACH SPANS AND EXISTING STEEL SUPERSTRUCTURE TOWER SPANS (STRINGERS AND FLOORBEAMS) SHALL BE CLEANED AND PAINTED IN ACCORDANCE WITH THE SPECIAL PROVISIONS. TOWER MEMBERS AND LIFT SPAN MEMBERS SHALL NOT BE CLEANED AND PAINTED EXCEPT AS NOTED IN THE PLANS OR SPECIAL PROVISIONS.
2. WITHIN THE SPANS TO BE CLEANED AND PAINTED, CLEAN AND PAINT EXISTING STRINGERS, FLOORBEAMS, GIRDERS, DIAPHRAGMS, CROSS FRAMES, STIFFENERS, CONNECTION PLATES, CANTILEVERED BRACKETS, EXTERIOR SURFACES OF TRANSVERSE STEEL CAP GIRDERS, ASSOCIATED CONNECTIONS, AND BEARINGS.

**ARCHITECTURAL:**

1. REPLACE CONTROL HOUSE ROOF.
2. ASBESTOS ABATEMENT AT CONTROL HOUSE.
3. INSTALL NEW CONTROL HOUSE INTERIOR FINISHES, PLUMBING, FIXTURES, LIGHTING, AND WINDOWS.
4. REPLACE CONTROL HOUSE HVAC.
5. INSTALL NEW CONTROL HOUSE FIRE ALARM SYSTEM.
6. REPLACE TOWER ELEVATORS.

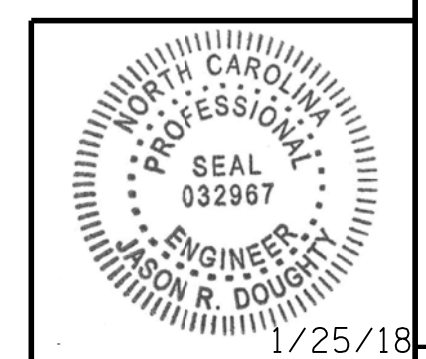
**MISCELLANEOUS:**

1. REPLACE "SLIPPERY WHEN WET" WARNING SIGNS AS SHOWN IN THE PLANS.
2. INSTALL NEW AIR HORN.

PROJECT NO. 15BPR.15  
NEW HANOVER COUNTY  
 STATION: \_\_\_\_\_

STATE OF NORTH CAROLINA  
 DEPARTMENT OF TRANSPORTATION  
 RALEIGH

**GENERAL PLAN AND ELEVATION**



DocuSigned by:  
 Jason R. Doughty  
 SF73FA2DEA974E8..

REVISIONS						SHEET NO.
NO.	BY:	DATE:	NO.	BY:	DATE:	TOTAL SHEETS
1			3			S-3
2			4			66

**DOCUMENT NOT CONSIDERED FINAL UNLESS ALL SIGNATURES COMPLETED**

\$DATE\$ 400\_005\_368202\_SML\_GPE\_640013.dgn

DESIGNED BY: J. DOUGHTY DATE: NOV 2017  
 DRAWN BY: K. WHITE DATE: NOV 2017  
 CHECKED BY: B. LOFLIN DATE: DEC 2017  
 DESIGN ENGINEER OF RECORD: J. DOUGHTY DATE: JAN 2018