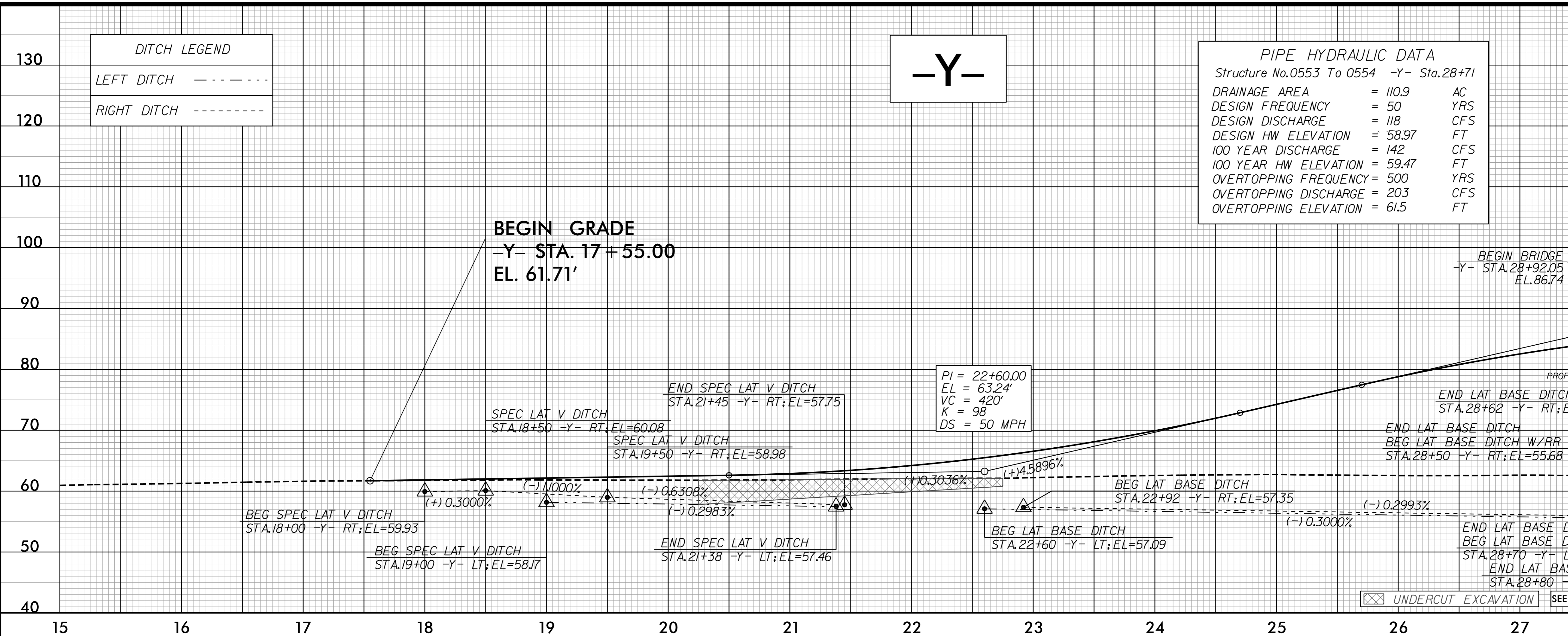


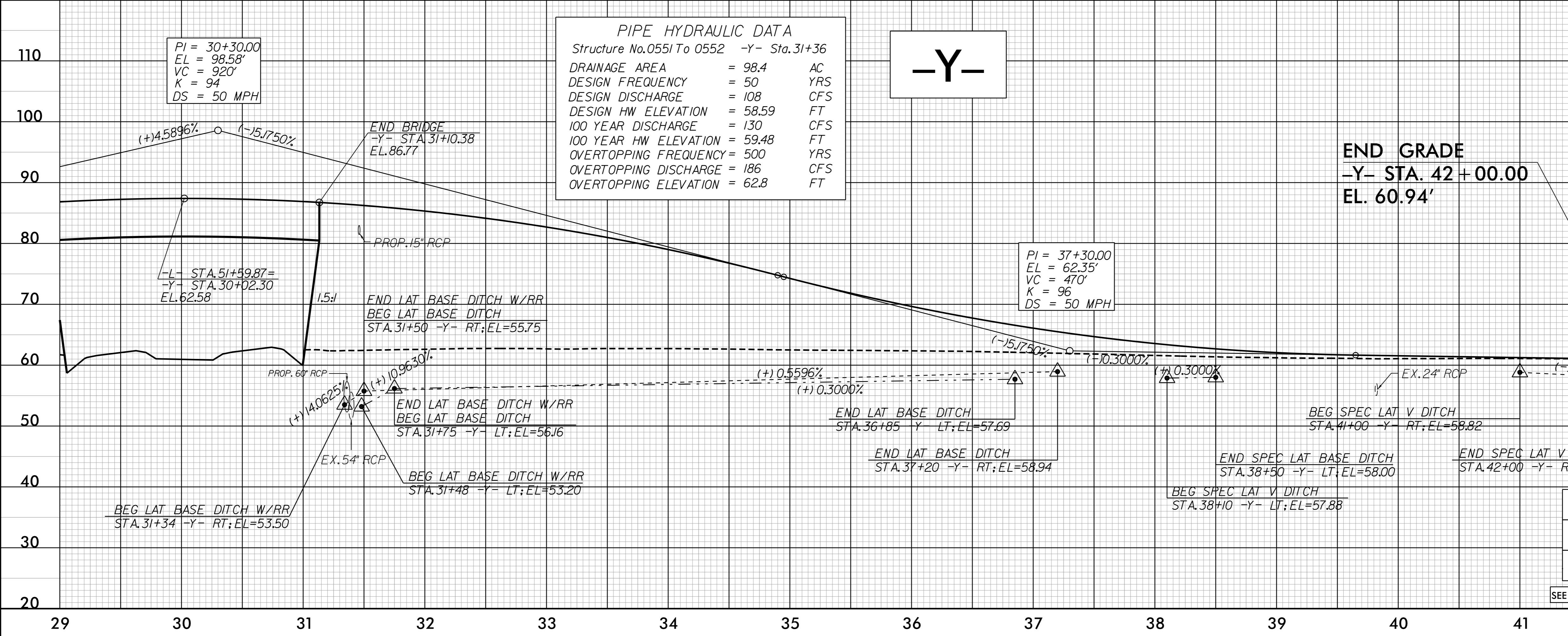
5/28/99

PROJECT REFERENCE NO. R-5749	SHEET NO. 16
<b>DOCUMENT NOT CONSIDERED FINAL UNLESS ALL SIGNATURES COMPLETED</b>	
ROADWAY DESIGN ENGINEER 	HYDRAULICS ENGINEER 

PIPE HYDRAULIC DATA	
Structure No.0553 To 0554 -Y- Sta.28+71	
DRAINAGE AREA	= 110.9 AC
DESIGN FREQUENCY	= 50 YRS
DESIGN DISCHARGE	= 118 CFS
DESIGN HW ELEVATION	= 58.97 FT
100 YEAR DISCHARGE	= 142 CFS
100 YEAR HW ELEVATION	= 59.47 FT
OVERTOPPING FREQUENCY	= 500 YRS
OVERTOPPING DISCHARGE	= 203 CFS
OVERTOPPING ELEVATION	= 61.5 FT



PIPE HYDRAULIC DATA	
Structure No.0551 To 0552 -Y- Sta.31+36	
DRAINAGE AREA	= 98.4 AC
DESIGN FREQUENCY	= 50 YRS
DESIGN DISCHARGE	= 108 CFS
DESIGN HW ELEVATION	= 58.59 FT
100 YEAR DISCHARGE	= 130 CFS
100 YEAR HW ELEVATION	= 59.48 FT
OVERTOPPING FREQUENCY	= 500 YRS
OVERTOPPING DISCHARGE	= 186 CFS
OVERTOPPING ELEVATION	= 62.8 FT



invgrid\_expression  
IT:SEPCAR2\NORTH161.sht.dgn