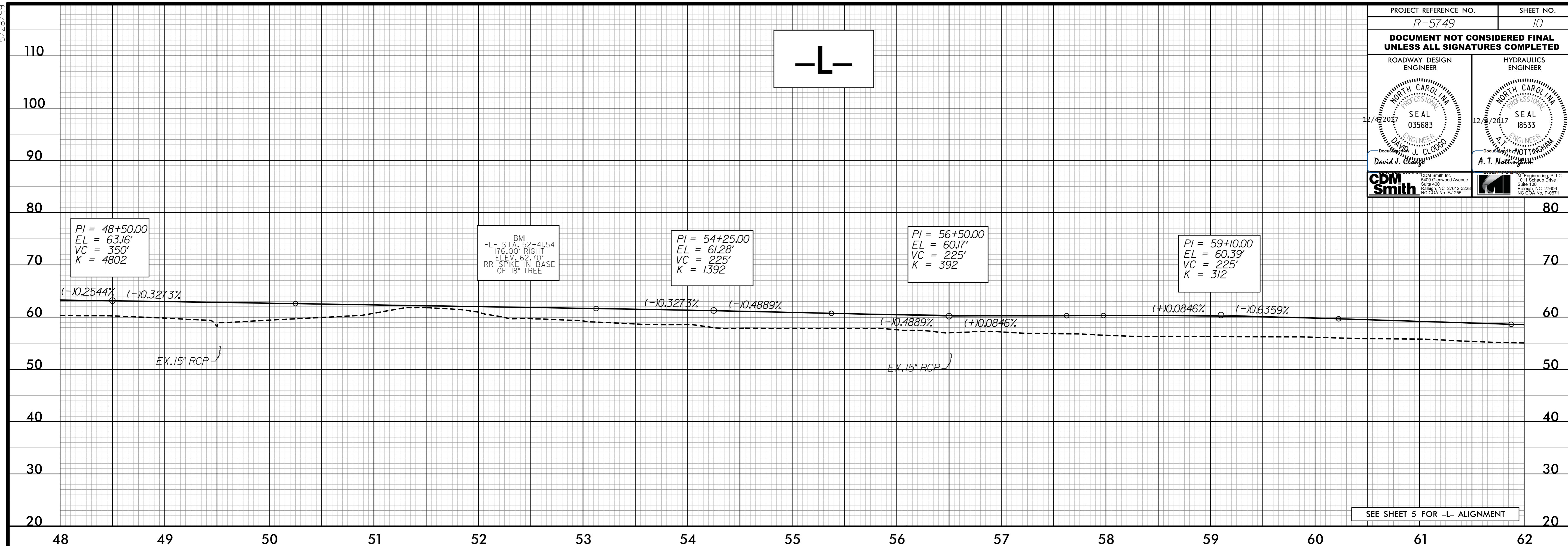
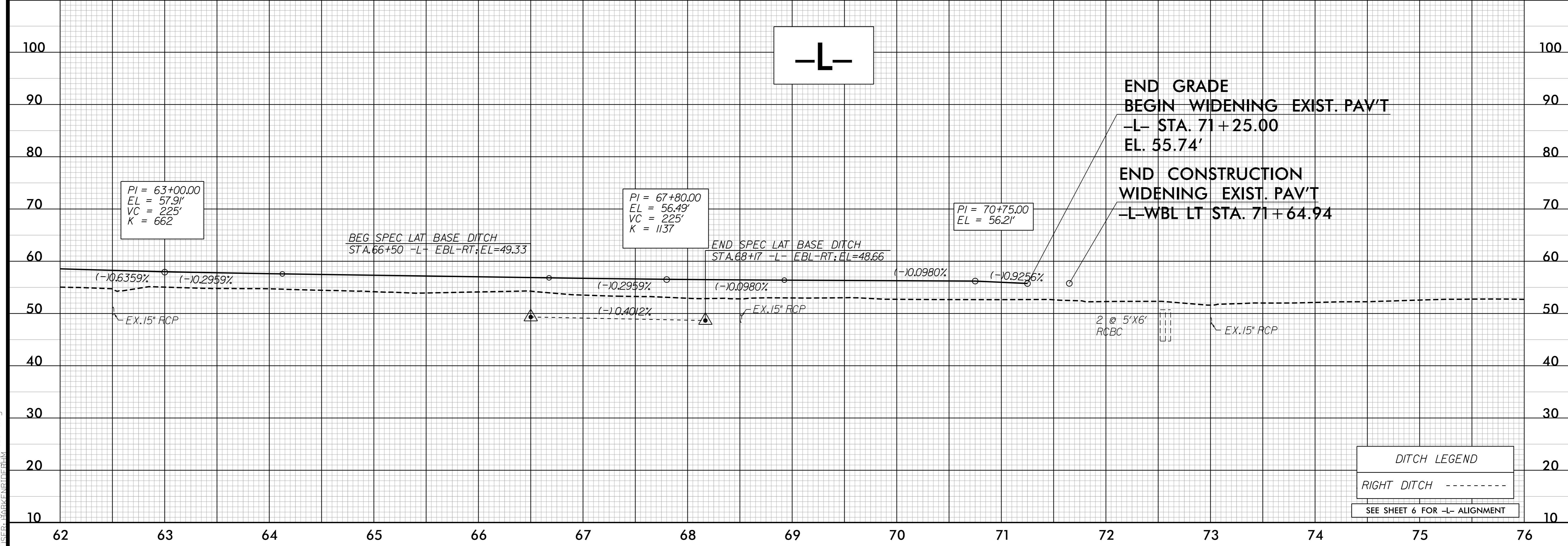


5/28/99

PROJECT REFERENCE NO. R-5749	SHEET NO. 10
DOCUMENT NOT CONSIDERED FINAL UNLESS ALL SIGNATURES COMPLETED	
ROADWAY DESIGN ENGINEER DAVID J. CLODDO 12/4/2017 SEAL 035683 NORTH CAROLINA PROFESSIONAL ENGINEER	HYDRAULICS ENGINEER A. T. NOTTINGHAM 12/8/2017 SEAL 18533 NORTH CAROLINA PROFESSIONAL ENGINEER
CDM Smith Inc. 5400 Glenwood Avenue Raleigh, NC 27612-3228 No. CDA No. F-2520	M Engineering, PLLC 1011 Schaub Drive Raleigh, NC 27606 No. CDA No. F-20871



SEE SHEET 5 FOR -L- ALIGNMENT



DITCH LEGEND

RIGHT DITCH - - - - -

SEE SHEET 6 FOR -L- ALIGNMENT

invgrid\_expression  
H:\SEEG\AR\27\1010101\101.sht.dgn