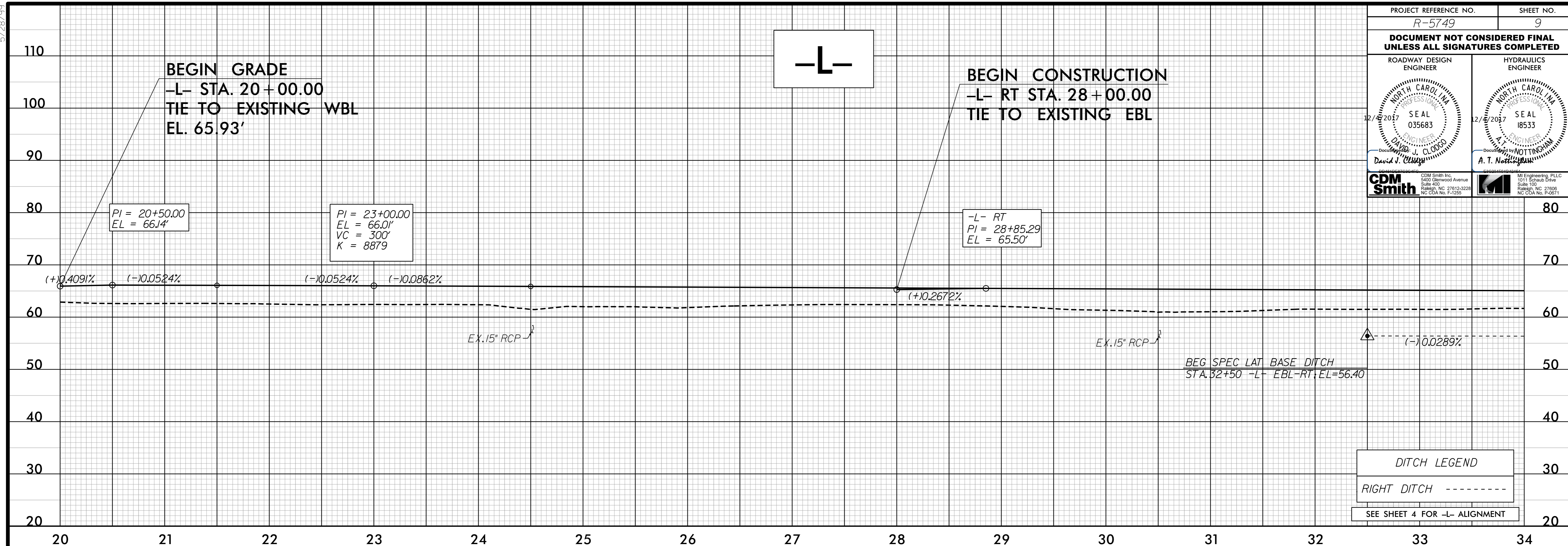


5/28/99

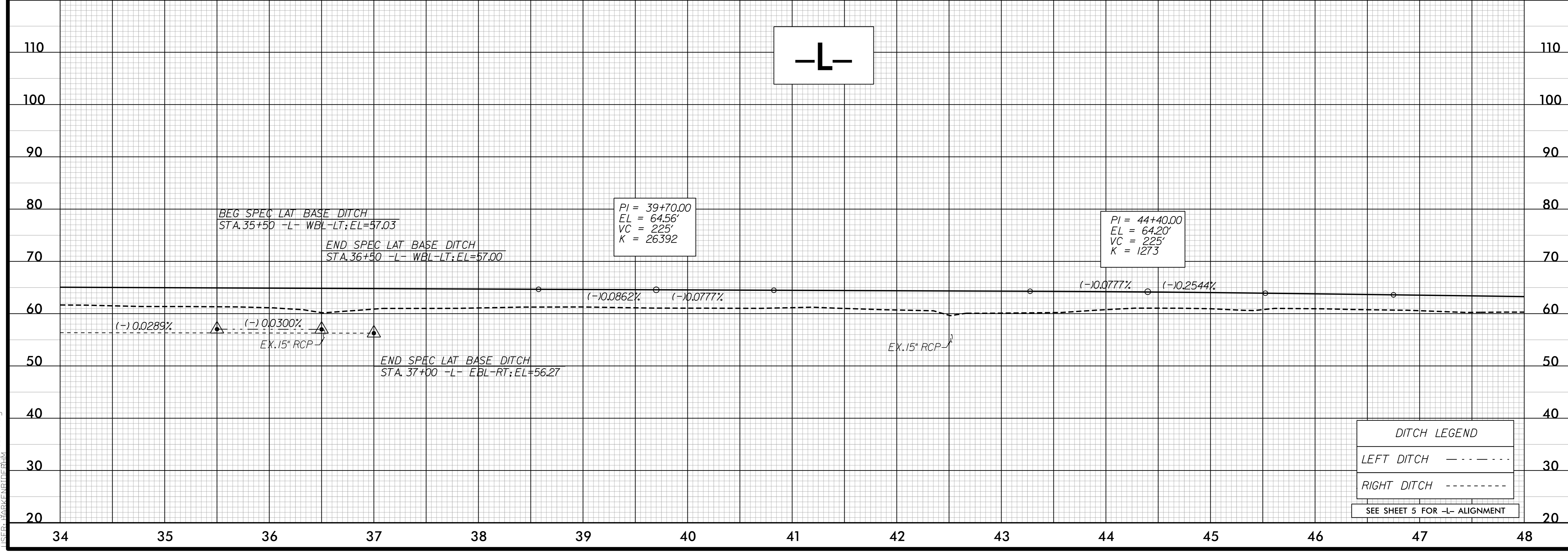
PROJECT REFERENCE NO. R-5749	SHEET NO. 9
DOCUMENT NOT CONSIDERED FINAL UNLESS ALL SIGNATURES COMPLETED	
ROADWAY DESIGN ENGINEER DAVID J. CLODDO SEAL 035683 12/8/2017	HYDRAULICS ENGINEER A. T. NOTTINGHAM SEAL 18533 12/8/2017
CDM Smith Inc. 5400 Glenwood Avenue Raleigh, NC 27612-3228 No. CDA No. F-250	Engineering, PLLC 1011 Schaub Drive Raleigh, NC 27606 No. CDA No. F-20871



DITCH LEGEND

RIGHT DITCH - - - - -

SEE SHEET 4 FOR -L- ALIGNMENT



DITCH LEGEND

LEFT DITCH - - - - -

RIGHT DITCH - - - - -

SEE SHEET 5 FOR -L- ALIGNMENT

invgrid_expression
H:\SE\CAR\21\101101.dwg