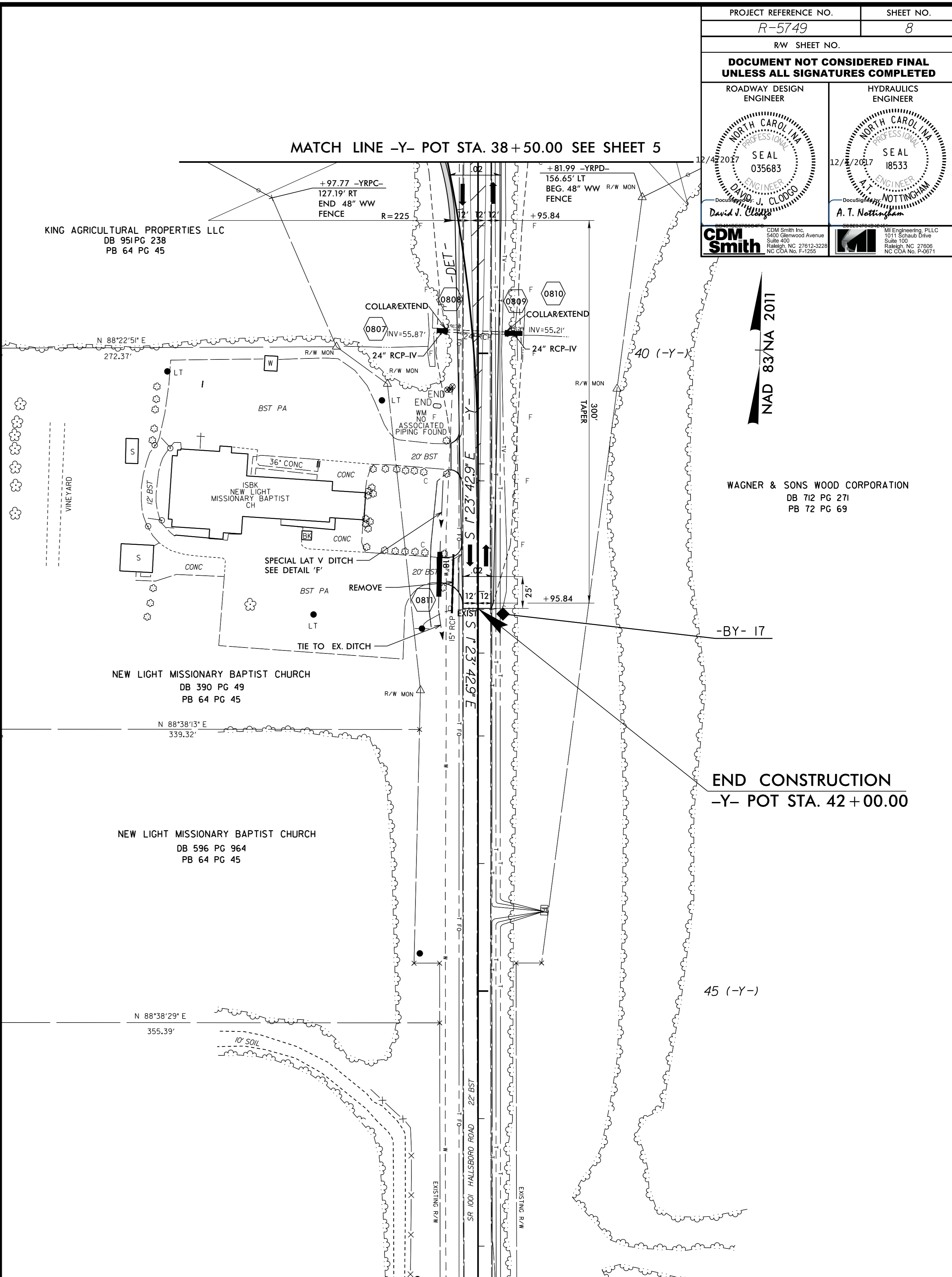
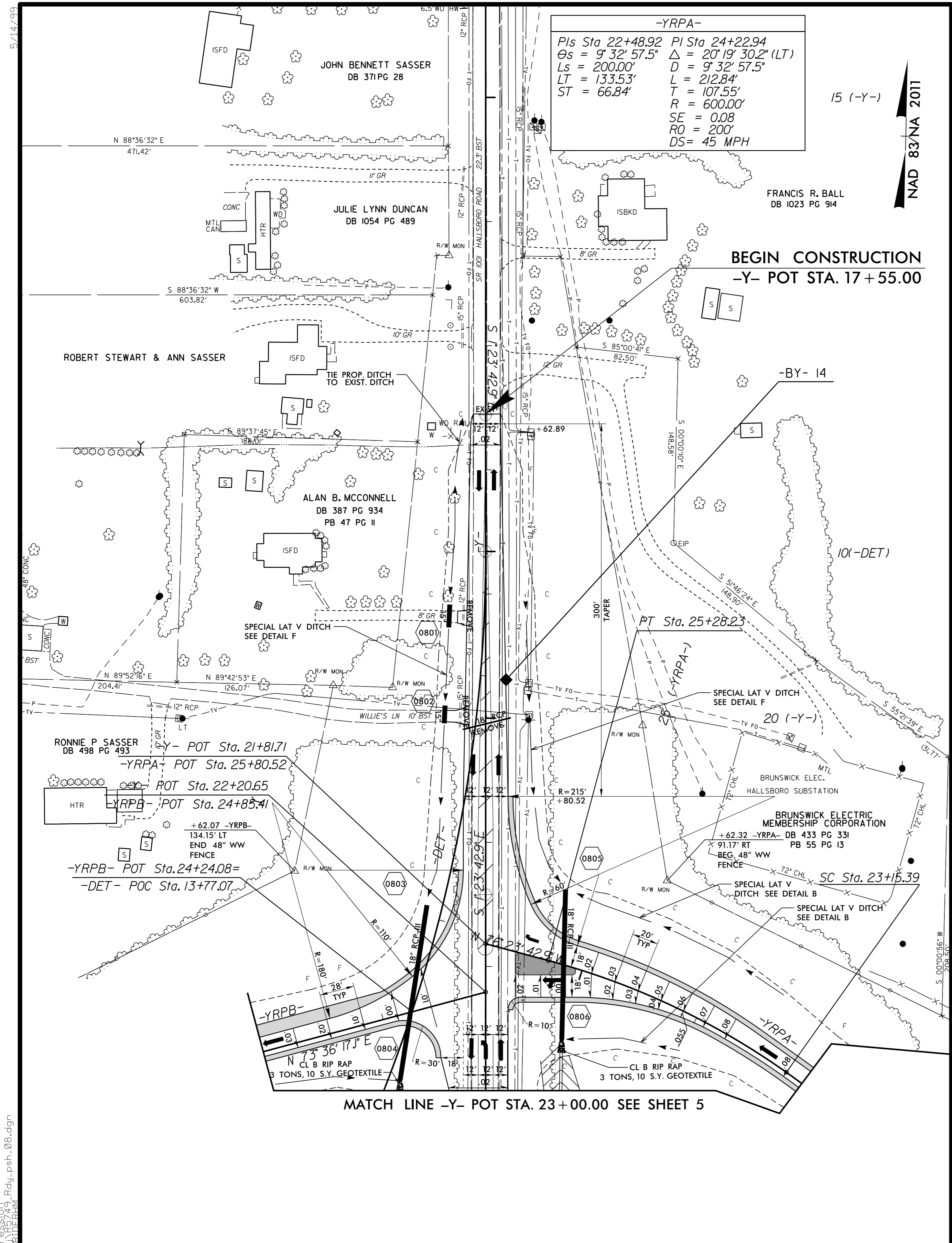


PROJECT REFERENCE NO. R-5749	SHEET NO. 8
RW SHEET NO.	
DOCUMENT NOT CONSIDERED FINAL UNLESS ALL SIGNATURES COMPLETED	
ROADWAY DESIGN ENGINEER David J. Clouse	HYDRAULICS ENGINEER A. T. Nottingham



-YRPA-
 Pls Sta 22+48.92 PI Sta 24+22.94
 $\theta_s = 9^\circ 32' 57.5''$ $\Delta = 20' 19' 30.2''$ (LT)
 $L_s = 200.00'$ $D = 9^\circ 32' 57.5''$
 $LT = 133.53'$ $L = 212.84'$
 $ST = 66.84'$ $T = 107.55'$
 $R = 600.00'$
 $SE = 0.08$
 $RO = 200'$
 $DS = 45$ MPH

15 (-Y-)
 NAD 83/NA 2011

NAD 83/NA 2011

SEE SHEET 16 FOR -Y- PROFILE
 SEE SHEET 2B-1 THRU 2B-3 FOR
 DETOUR DETAILS
 SEE SHEET 2B-4 FOR INTERSECTION
 DETAILS

SEE SHEET 16 FOR -Y- PROFILE
 SEE SHEET 2B-1 THRU 2B-3 FOR
 DETOUR DETAILS

Invalid expression Rdj_psh_08.dgn
 USER: h2k