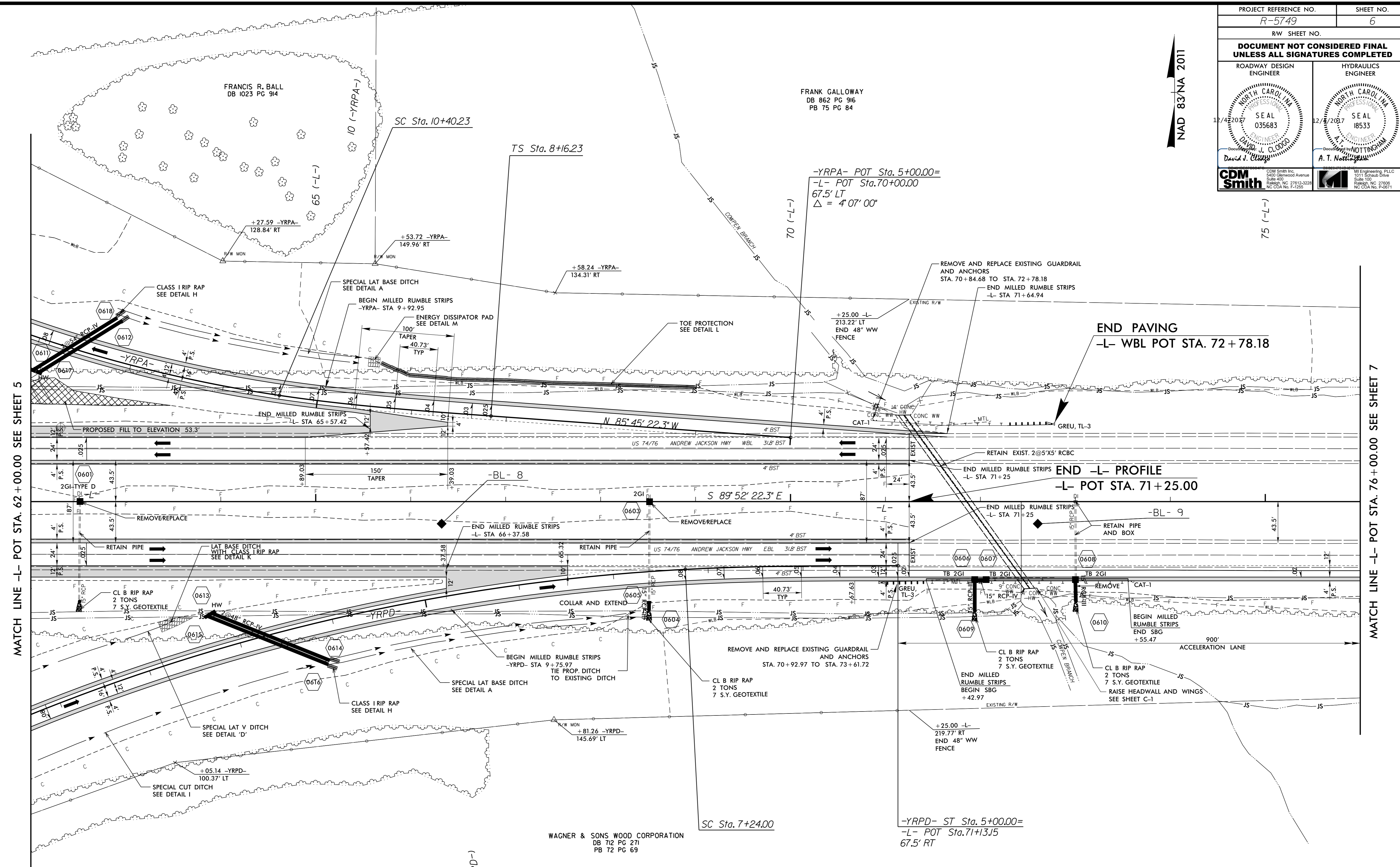


PROJECT REFERENCE NO. R-5749	SHEET NO. 6
R/W SHEET NO.	
<b>DOCUMENT NOT CONSIDERED FINAL UNLESS ALL SIGNATURES COMPLETED</b>	
ROADWAY DESIGN ENGINEER DAVID J. CLODDO SEAL 035683 NORTH CAROLINA PROFESSIONAL ENGINEER 12/2/2017	HYDRAULICS ENGINEER A. T. NOTTINGHAM SEAL 18533 NORTH CAROLINA PROFESSIONAL ENGINEER 12/2/2017
CDM Smith 5400 Glenwood Avenue Raleigh, NC 27612-3228 NC CDA No. P-7255	

NAD 83/NA 2011



MATCH LINE -L- POT STA. 62 + 00.00 SEE SHEET 5

MATCH LINE -L- POT STA. 76 + 00.00 SEE SHEET 7

-YRPA-	
PIs Sta 9+65.61	PI Sta 14+44.61
$\Theta_s = 4^\circ 20' 09.2''$	$\Delta = 30^\circ 33' 48.6''$ (RT)
Ls = 224.00'	D = 3' 52' 16.8"
LT = 149.38'	L = 789.48'
ST = 74.71'	T = 404.38'
	R = 1,480.00'
	SE = 0.08
	RO = 224.00'
	DS = 65 MPH

-YRPD-	
PIs Sta 6+49.35	PI Sta 11+90.60
$\Theta_s = 3^\circ 00' 05.3''$	$\Delta = 24^\circ 37' 21.1''$ (LT)
Ls = 224.00'	D = 2' 40' 47.6"
LT = 149.35'	L = 918.79'
ST = 74.69'	T = 466.60'
	R = 2,138.00'
	SE = 0.08
	RO = 224.00'
	DS = 65 MPH

Invalid expression Rdj\_psh\_06.dgn  
USER: JTBK/11/11/2011 11:41:41 AM

SEE SHEET 10 FOR -L- PROFILE  
SEE SHEET 12 FOR -YRPA- PROFILE  
SEE SHEET 15 FOR -YRPD- PROFILE  
SEE SHEET 2D-1 FOR DITCH DETAILS