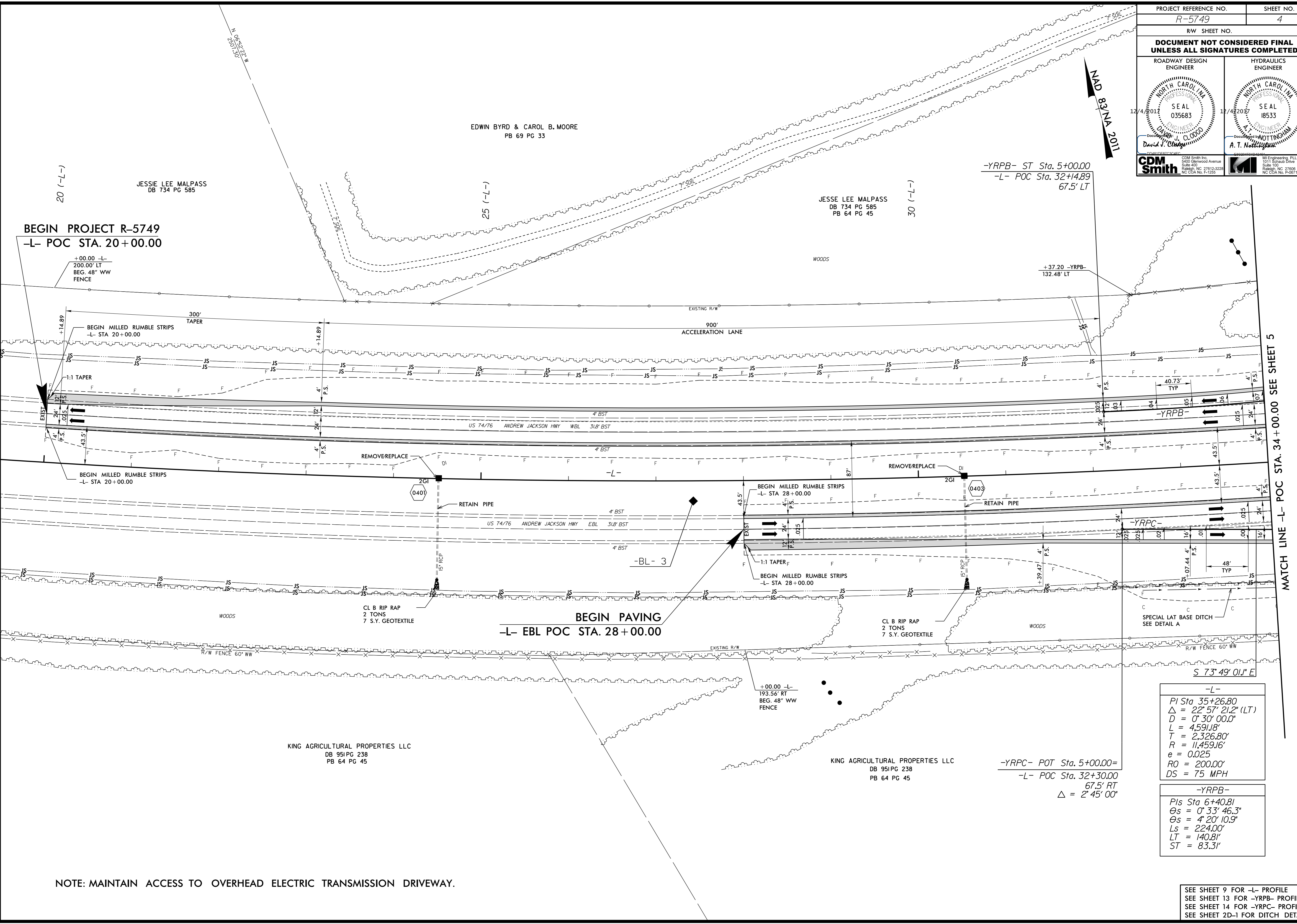


PROJECT REFERENCE NO. R-5749	SHEET NO. 4
R/W SHEET NO.	
DOCUMENT NOT CONSIDERED FINAL UNLESS ALL SIGNATURES COMPLETED	
ROADWAY DESIGN ENGINEER 	HYDRAULICS ENGINEER
CDM Smith 5400 Glenwood Avenue Raleigh, NC 27612-3228 NC CDA No. P-1255	M Engineering, PLLC 3333 S. Shiloh Drive Raleigh, NC 27606 NC CDA No. P-3871



BEGIN PROJECT R-5749
-L- POC STA. 20+00.00

BEGIN PAVING
-L- EBL POC STA. 28+00.00

-YRPB- ST Sta. 5+00.00
-L- POC Sta. 32+14.89
67.5' LT

-YRPC- POT Sta. 5+00.00=
-L- POC Sta. 32+30.00
67.5' RT
 $\Delta = 2' 45' 00''$

-L-
 $PI\ Sta\ 35+26.80$
 $\Delta = 22' 57' 21.2'' (LT)$
 $D = 0' 30' 00.0''$
 $L = 4.59118'$
 $T = 2,326.80'$
 $R = 11,459.16'$
 $e = 0.025$
 $RO = 200.00'$
 $DS = 75\ MPH$

-YRPB-
 $PIs\ Sta\ 6+40.81$
 $\theta_s = 0' 33' 46.3''$
 $\theta_s = 4' 20' 10.9''$
 $L_s = 224.00'$
 $LT = 140.81'$
 $ST = 83.31'$

NOTE: MAINTAIN ACCESS TO OVERHEAD ELECTRIC TRANSMISSION DRIVEWAY.

SEE SHEET 9 FOR -L- PROFILE
 SEE SHEET 13 FOR -YRPB- PROFILE
 SEE SHEET 14 FOR -YRPC- PROFILE
 SEE SHEET 2D-1 FOR DITCH DETAILS

Invalid expression: Rdj_psh_04.dgn
 USER: H2K1001