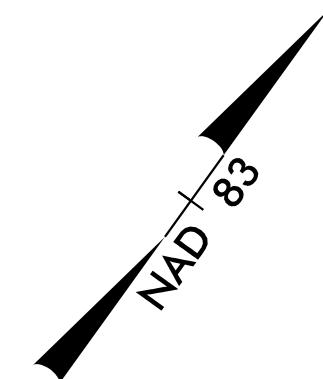
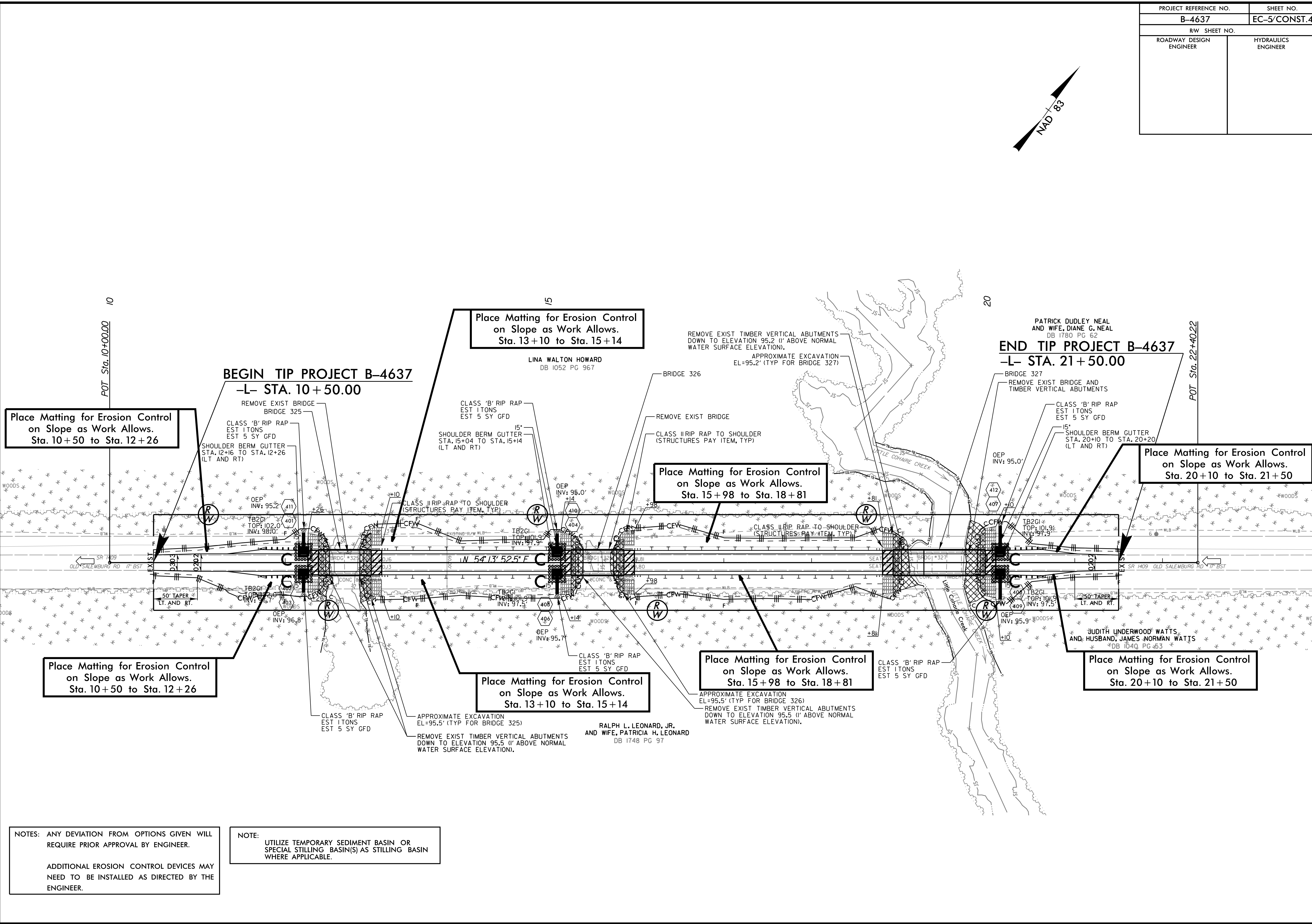


PROJECT REFERENCE NO.	SHEET NO.
B-4637	EC-5/CONST.4
RW SHEET NO.	
ROADWAY DESIGN ENGINEER	HYDRAULICS ENGINEER



8/17/99  
 4:58 PM Roadway\01036316 - B-4637\Erosion Control\B4637\_ero\_psh\_5.dgn  
 4/15/99



**Place Matting for Erosion Control on Slope as Work Allows. Sta. 10+50 to Sta. 12+26**

**Place Matting for Erosion Control on Slope as Work Allows. Sta. 13+10 to Sta. 15+14**

**Place Matting for Erosion Control on Slope as Work Allows. Sta. 15+98 to Sta. 18+81**

**Place Matting for Erosion Control on Slope as Work Allows. Sta. 20+10 to Sta. 21+50**

**Place Matting for Erosion Control on Slope as Work Allows. Sta. 10+50 to Sta. 12+26**

**Place Matting for Erosion Control on Slope as Work Allows. Sta. 13+10 to Sta. 15+14**

**Place Matting for Erosion Control on Slope as Work Allows. Sta. 15+98 to Sta. 18+81**

**Place Matting for Erosion Control on Slope as Work Allows. Sta. 20+10 to Sta. 21+50**

**BEGIN TIP PROJECT B-4637 -L- STA. 10+50.00**

**END TIP PROJECT B-4637 -L- STA. 21+50.00**

NOTES: ANY DEVIATION FROM OPTIONS GIVEN WILL REQUIRE PRIOR APPROVAL BY ENGINEER.

ADDITIONAL EROSION CONTROL DEVICES MAY NEED TO BE INSTALLED AS DIRECTED BY THE ENGINEER.

NOTE: UTILIZE TEMPORARY SEDIMENT BASIN OR SPECIAL STILLING BASIN(S) AS STILLING BASIN WHERE APPLICABLE.

RALPH L. LEONARD, JR. AND WIFE, PATRICIA H. LEONARD  
 DB 1748 PG 97

PATRICK DUDLEY NEAL AND WIFE, DIANE G. NEAL  
 DB 1780 PG 62