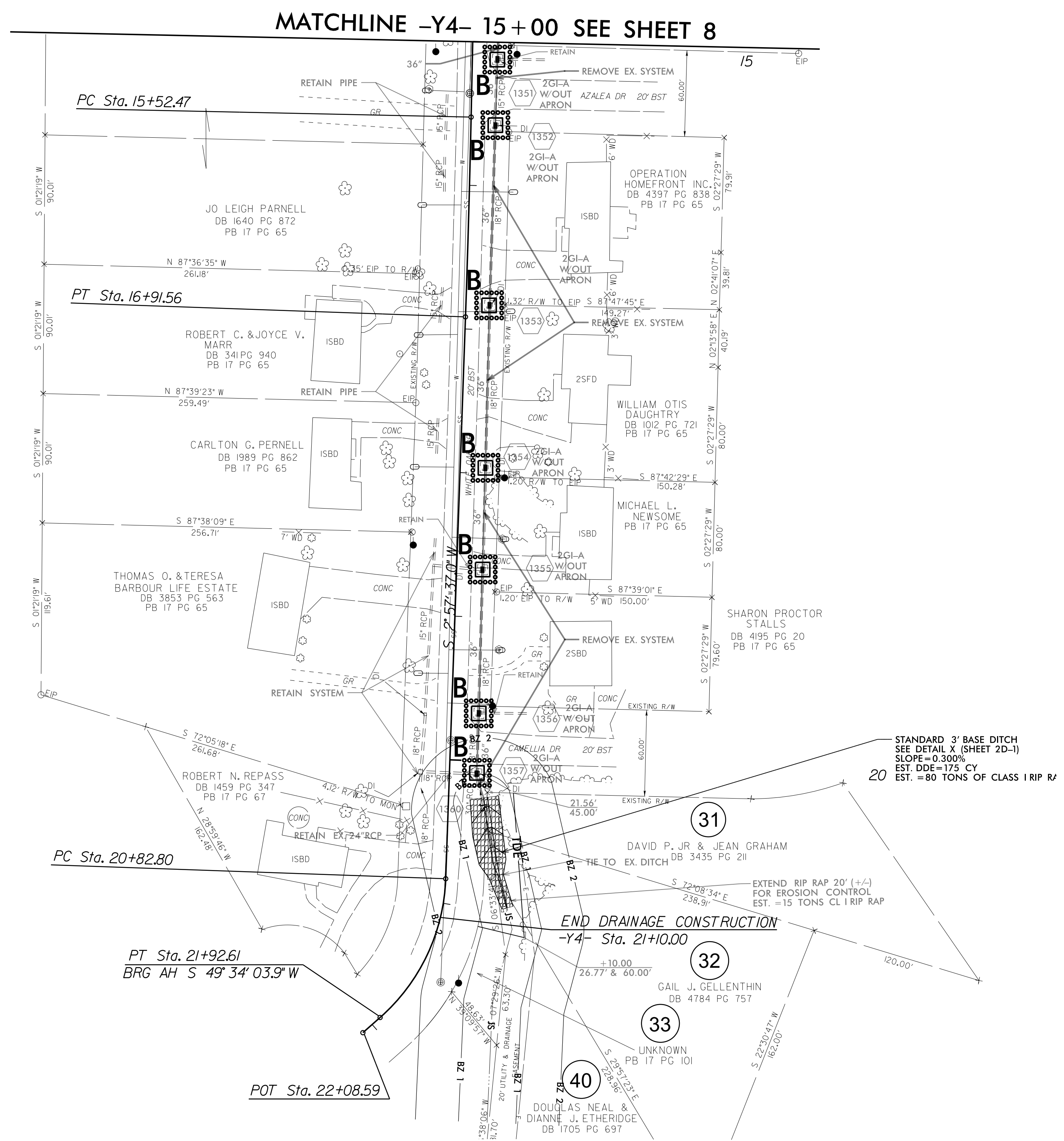


PROJECT REFERENCE NO.	SHEET NO.
U-3334B	EC-24/CONST.3
RW SHEET NO.	
ROADWAY DESIGN ENGINEER	HYDRAULICS ENGINEER

NAD 83/NSRS 2007



MATCHLINE -Y4- 15+00 SEE SHEET 8

PC Sta. 15+52.47

PT Sta. 16+91.56

PC Sta. 20+82.80

PT Sta. 21+92.61
BRG AH S 49° 34' 03.9" W

POT Sta. 22+08.59

STANDARD 3' BASE DITCH
SEE DETAIL X (SHEET 2D-1)
SLOPE=0.300%
EST. DDE=17.5 CY
EST. =80 TONS OF CLASS 1 RIP R/

END DRAINAGE CONSTRUCTION
-Y4- Sta. 21+10.00

31

32

33

40

DAVID P. JR & JEAN GRAHAM
DB 3435 PG 211

GAIL J. CELLENTIN
DB 4784 PG 757

UNKNOWN
PB 17 PG 101

DOUGLAS NEAL &
DIANNE J. ETHERIDGE
DB 1705 PG 637

JO LEIGH PARNELL
DB 1640 PG 872
PB 17 PG 65

ROBERT C. & JOYCE V.
MARR
DB 341 PG 940
PB 17 PG 65

CARLTON G. PARNELL
DB 1989 PG 862
PB 17 PG 65

THOMAS O. & TERESA
BARBOUR LIFE ESTATE
DB 3853 PG 563
PB 17 PG 65

ROBERT N. REPASS
DB 1459 PG 347
PB 17 PG 67