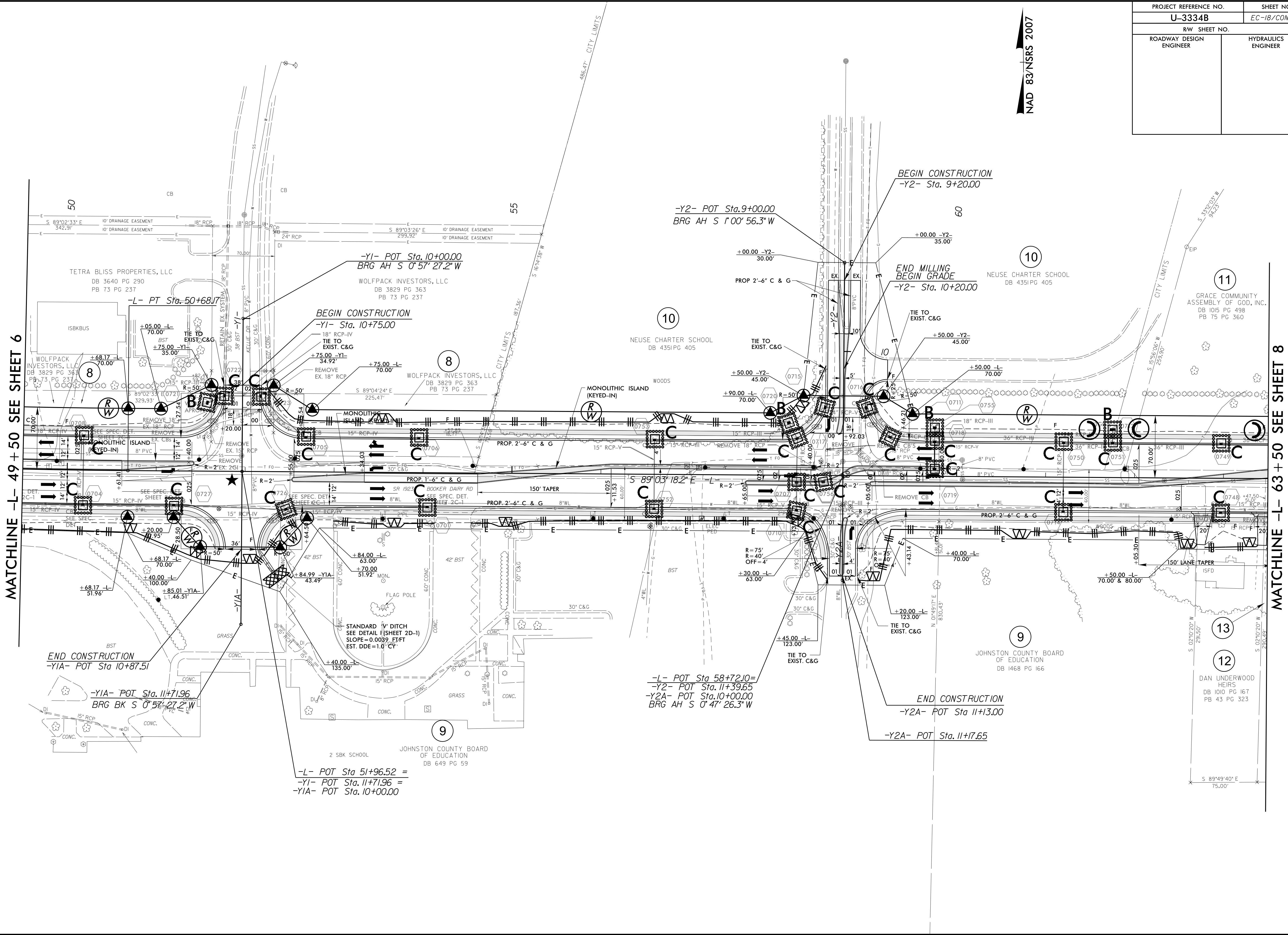


PROJECT REFERENCE NO.	SHEET NO.
U-3334B	EC-18/CONST.7
RW SHEET NO.	
ROADWAY DESIGN ENGINEER	HYDRAULICS ENGINEER

NAD 83/NSRS 2007



MATCHLINE -L- 49 + 50 SEE SHEET 6

MATCHLINE -L- 63 + 50 SEE SHEET 8

8/17/99

23-SEP-2017 14:01:10 \\D:\s199\U-3334B-EC.upsh.s7.dgn
 R:\s199\U-3334B-EC.upsh.s7.dgn
 REVISION 1416

END CONSTRUCTION
 -YIA- POT Sta 10+87.51

-YIA- POT Sta 11+71.96
 BRG BK S 0° 57' 27.2" W

-L- POT Sta 51+96.52 =
 -YI- POT Sta 11+71.96 =
 -YIA- POT Sta 10+00.00

-YI- POT Sta 10+00.00
 BRG AH S 0° 57' 27.2" W

BEGIN CONSTRUCTION
 -YI- Sta. 10+75.00

-Y2- POT Sta. 9+00.00
 BRG AH S 1° 00' 56.3" W

BEGIN CONSTRUCTION
 -Y2- Sta. 9+20.00

END MILLING
 BEGIN GRADE
 -Y2- Sta. 10+20.00

-L- POT Sta 58+72.10 =
 -Y2- POT Sta. 11+39.65
 -Y2A- POT Sta. 10+00.00
 BRG AH S 0° 47' 26.3" W

END CONSTRUCTION
 -Y2A- POT Sta 11+13.00

-Y2A- POT Sta. 11+17.65