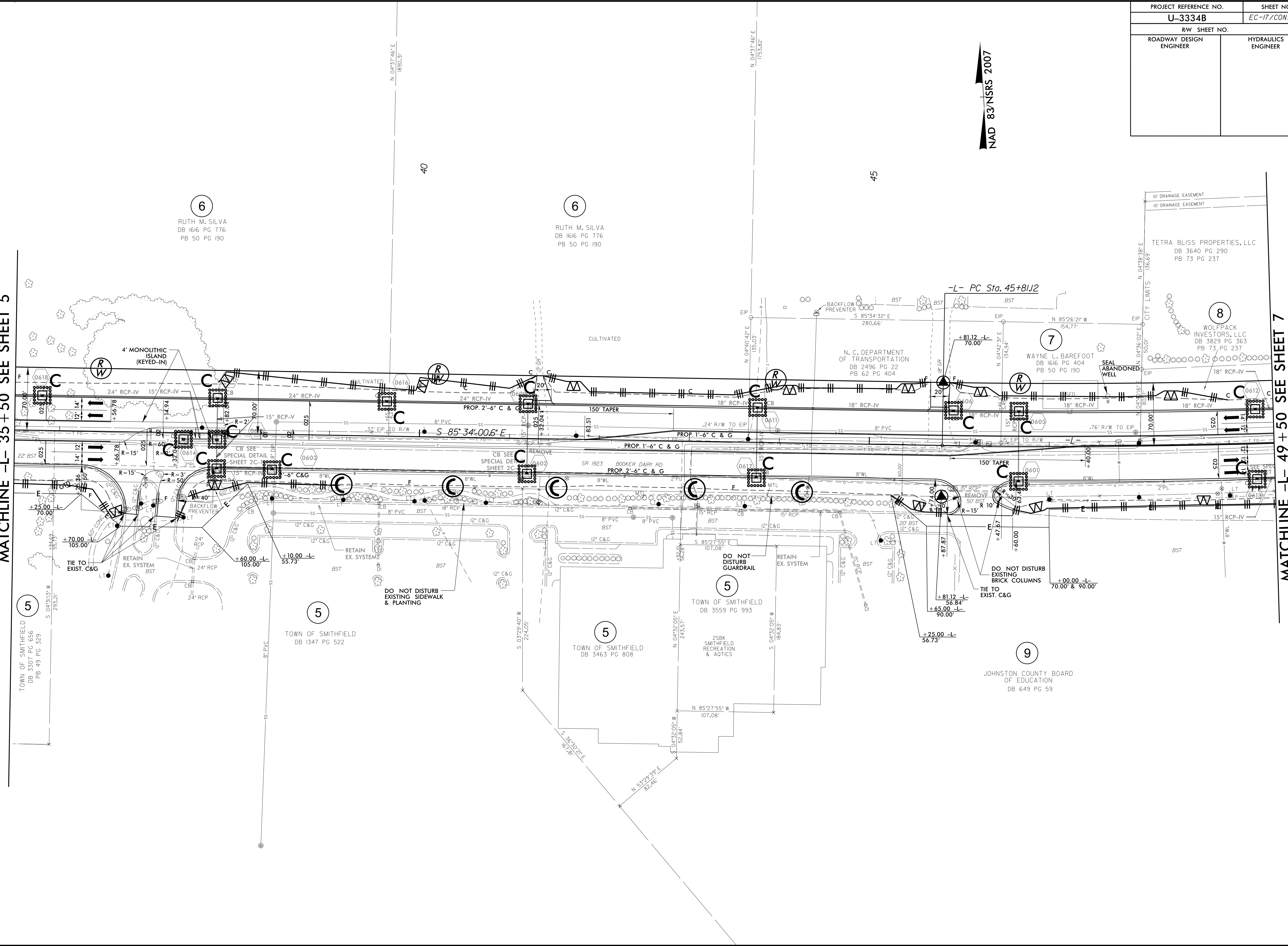


PROJECT REFERENCE NO.	SHEET NO.
U-3334B	EC-17/CONST.6
RW SHEET NO.	
ROADWAY DESIGN ENGINEER	HYDRAULICS ENGINEER

NAD 83/NSRS 2007

MATCHLINE -L- 35 + 50 SEE SHEET 5

MATCHLINE -L- 49 + 50 SEE SHEET 7



6
RUTH M. SILVA
DB 1616 PG 776
PB 50 PG 190

6
RUTH M. SILVA
DB 1616 PG 776
PB 50 PG 190

8
TETRA BLISS PROPERTIES, LLC
DB 3640 PG 290
PB 73 PG 237

7
WAYNE L. BAREFOOT
DB 1616 PG 404
PB 50 PG 190

8
WOLFPACK INVESTORS, LLC
DB 3829 PG 363
PB 73 PG 237

5
TOWN OF SMITHFIELD
DB 3559 PG 993

5
TOWN OF SMITHFIELD
DB 3463 PG 808

9
JOHNSTON COUNTY BOARD OF EDUCATION
DB 649 PG 59

5
TOWN OF SMITHFIELD
DB 3307 PG 656
PB 49 PG 329

5
TOWN OF SMITHFIELD
DB 1347 PG 522

23-SEP-2017 13:55
R:\Information\U-3334B-EC.psh_s6.dgn
REVISION 1

8/17/99