

5/28/99

SEE SHEET 14 FOR -Y6- PLAN

# -Y6-

PIPE HYDRAULIC DATA  
DRAINAGE STRUCTURE NO.1406 Sta.11+55

DRAINAGE AREA	= 0.34	AC
DESIGN FREQUENCY	= 25	YRS
DESIGN DISCHARGE	= 16184	CFS
DESIGN HW ELEVATION	= 152.8	FT
100 YEAR DISCHARGE	= 2	CFS
100 YEAR HW ELEVATION	= 152.9	FT
OVERTOPPING FREQUENCY	= 100(+)	YRS
OVERTOPPING DISCHARGE	= 7.4	CFS
OVERTOPPING ELEVATION	= 154.5	FT

PIPE HYDRAULIC DATA  
DRAINAGE STRUCTURE NO.1408 Sta.12+00

DRAINAGE AREA	= 1	AC
DESIGN FREQUENCY	= 25	YRS
DESIGN DISCHARGE	= 476	CFS
DESIGN HW ELEVATION	= 152.3	FT
100 YEAR DISCHARGE	= 6	CFS
100 YEAR HW ELEVATION	= 152.6	FT
OVERTOPPING FREQUENCY	= 100(+)	YRS
OVERTOPPING DISCHARGE	= 5.9	CFS
OVERTOPPING ELEVATION	= 152.8	FT

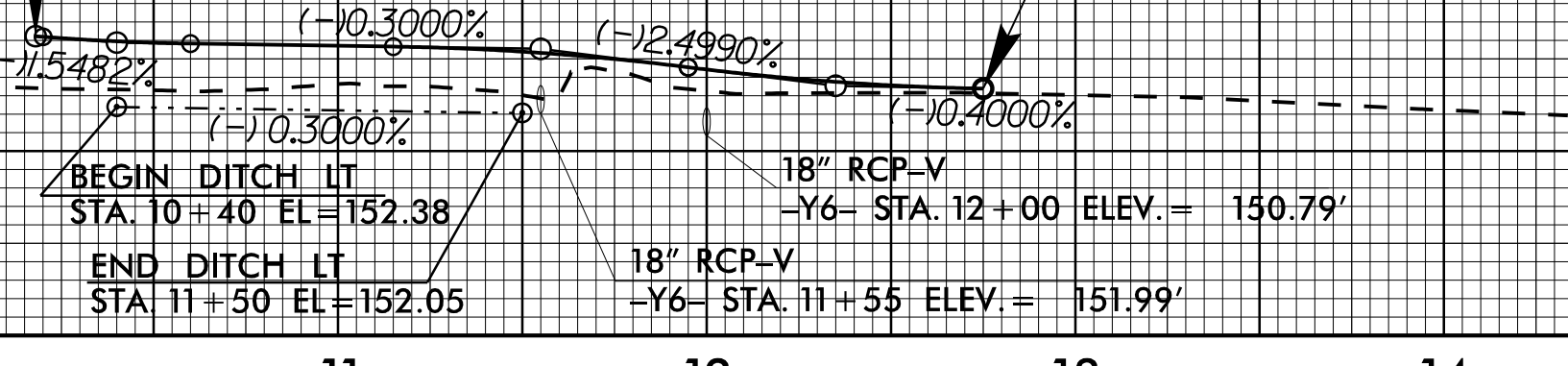
BEGIN -Y6- GRADE  
STA. 10+17.99  
ELEV. 156.22'

END -Y6- GRADE  
STA. 12+75.00  
ELEV. 153.38'

PI = 10+40.00  
EL = 155.88'  
VC = 40'  
K = 32  
DS = 25 MPH

PI = 11+55.00  
EL = 155.54'  
VC = 80'  
K = 36  
DS = 35 MPH

PI = 12+35.00  
EL = 153.54'  
VC = 80'  
K = 38  
DS = 30 MPH



10

11

12

13

14

15

160

150

140

140

150

160

# -Y7-



PROJECT REFERENCE NO.	U-3334B	SHEET NO.	22
ROADWAY DESIGN ENGINEER	SEAL	HYDRAULICS ENGINEER	SEAL
Professional Seal: 022037	Professional Seal: 032581	Professional Seal: 032581	Professional Seal: 032581
11/28/2017		11/28/2017	

DOCUMENT NOT CONSIDERED FINAL  
UNLESS ALL SIGNATURES COMPLETED

----- LEFT DITCH GRADE  
----- RIGHT DITCH GRADE

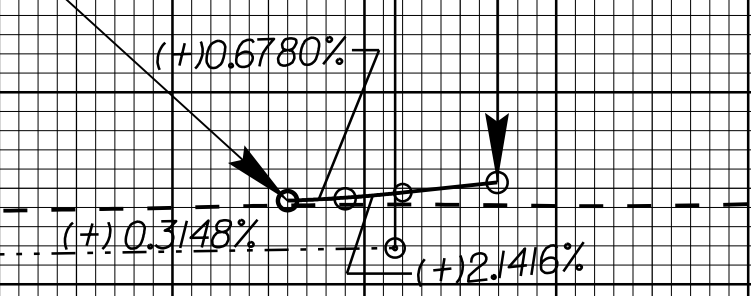
BEGIN -Y7- GRADE  
STA. 15+80.00  
ELEV. 154.35'

END -Y7- GRADE  
STA. 16+34.61  
ELEV. 155.30'

PI = 15+95.00  
EL = 154.45'  
VC = 30'  
K = 21  
DS = 20 MPH

BEGIN DITCH LT  
STA. 15+00 EL=151.54

END DITCH LT  
STA. 16+08 EL=151.54



SEE SHEETS 8 & 14 FOR -Y7- PLAN

10

11

12

13

14

15

16

17

160

150

140

160

150

140

# -DRW1-

CULVERT DATA

DRAINAGE AREA:	1.2 SQ. MI.
DESIGN FREQ:	10 YR.
DESIGN DISCHARGE:	330 CFS
DESIGN H.W. ELEV.:	142.6 FT
1000 DISCHARGE:	500 CFS
1000 ELEV.:	143.8 FT
OVERTOPPING FREQ:	500+ YR
OVERTOPPING DISCHARGE:	600+ CFS
OVERTOPPING ELEVATION:	146.8 FT

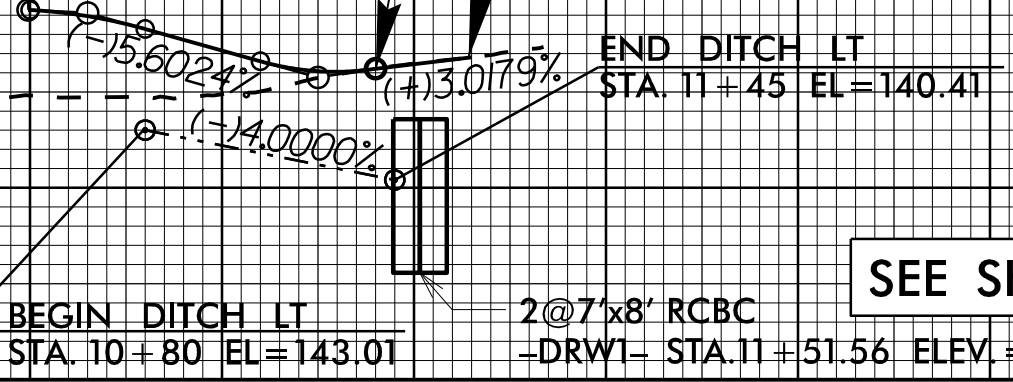
BEGIN -DRW1- GRADE  
STA. 10+49.50  
ELEV. 149.27'

END -DRW1- GRADE  
STA. 11+40.00  
ELEV. 146.21'

PI = 10+65.00  
EL = 149.11'  
VC = 30'  
K = 7  
DS < 15 MPH

END MILL & REPLACE  
STA. 11+65.00

PI = 11+25.00  
EL = 145.75'  
VC = 30'  
K = 4  
DS < 15 MPH



SEE SHEET 12 FOR -DRW1- PLAN

10

11

12

13

160

150

140

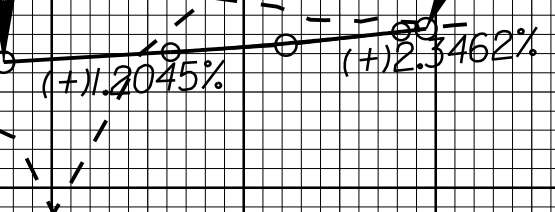
130

# -DRW2-

BEGIN -DRW2- GRADE  
STA. 10+37.50  
ELEV. 146.55'

END -DRW2- GRADE  
STA. 11+47.50  
ELEV. 148.29'

PI = 11+11.00  
EL = 147.44'  
VC = 60'  
K = 53  
DS = 30 MPH



SEE SHEET 12 FOR -DRW2- PLAN

10

11

160

150

140

11/21/2017  
Us:\Roadway\Proje\U3334B\dwg\1s22.dgn