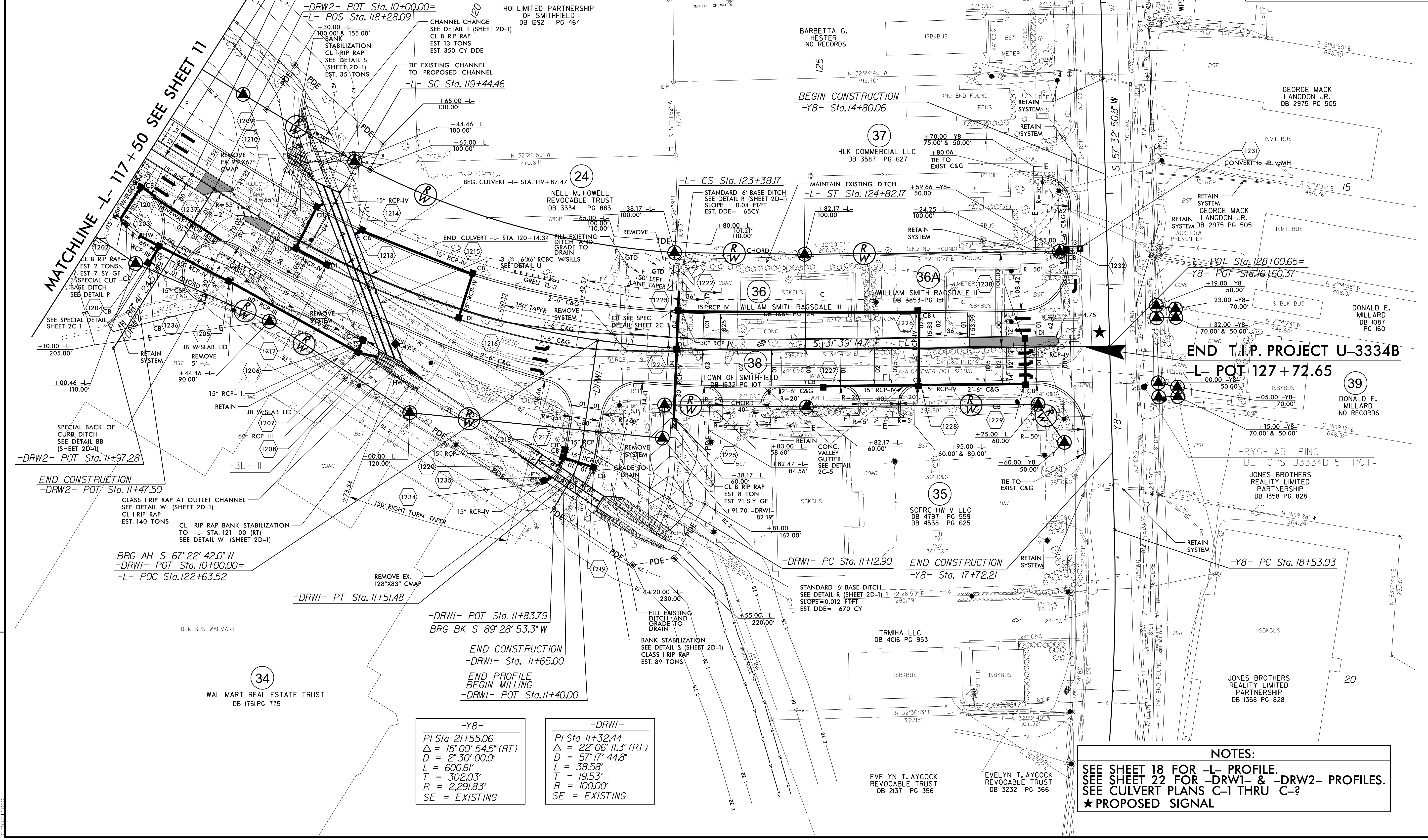


-L-		
Pls Sta 118+96.49	Pl Sta 121+44.31	Pls Sta 123+86.20
$\Delta = 4' 26'' 08.9''$	$\Delta = 2' 15'' 20.1''$ (LT)	$\Delta = 4' 26'' 08.9''$
Ls = 144.00'	D = 6' 09' 39.0"	Ls = 144.00'
LT = 96.03'	L = 393.71'	LT = 96.03'
ST = 48.03'	T = 199.85'	ST = 48.03'
	R = 930.00'	
	Se = .04	

NAD 83/NSRS 2007



-Y8-	
PI Sta 21+55.06	$\Delta = 15' 00'' 54.5''$ (RT)
D = 2' 30' 00.0"	L = 600.61'
T = 302.03'	R = 2,291.83'
SE = EXISTING	

-DRWI-	
PI Sta 11+32.44	$\Delta = 22' 06'' 11.3''$ (RT)
D = 57' 17' 44.8"	L = 38.58'
T = 19.53'	R = 100.00'
SE = EXISTING	

NOTES:
 SEE SHEET 18 FOR -L- PROFILE.
 SEE SHEET 22 FOR -DRWI- & -DRW2- PROFILES.
 SEE CULVERT PLANS C-1 THRU C-2
 ★ PROPOSED SIGNAL

REVISIONS

8/17/99
 11/27/2017
 I:\Roadway\Proj\U3334B_rdy\esh.sj2.dgn