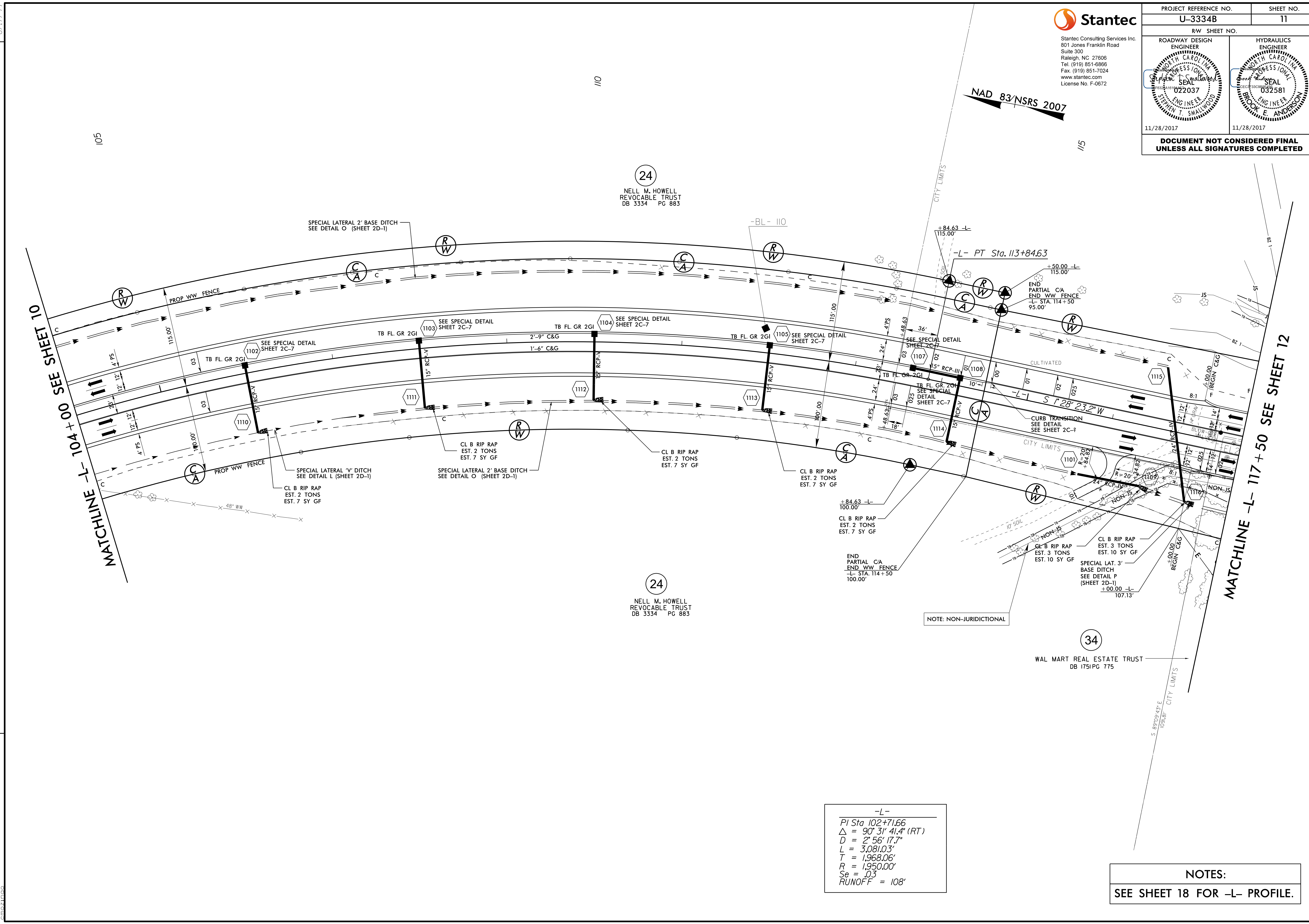


PROJECT REFERENCE NO. U-3334B	SHEET NO. 11
RW SHEET NO.	
ROADWAY DESIGN ENGINEER <i>[Signature]</i> SEAL 022037 SHEEN T. SMALLWOOD	HYDRAULICS ENGINEER <i>[Signature]</i> SEAL 032581 BROOK E. ANDERSON
11/28/2017	11/28/2017
DOCUMENT NOT CONSIDERED FINAL UNLESS ALL SIGNATURES COMPLETED	



REVISIONS

11/27/2017
I:\Roadway\Proj\U3334B_rndjy_psh_s11.dgn
CND

24
 NELL M. HOWELL
 REVOCABLE TRUST
 DB 3334 PG 883

24
 NELL M. HOWELL
 REVOCABLE TRUST
 DB 3334 PG 883

34
 WAL MART REAL ESTATE TRUST
 DB 1751 PG 775

-L-
 PI Sta 102+71.66
 $\Delta = 90^{\circ} 31' 41.4''$ (RT)
 $D = 2' 56'' 17.7''$
 $L = 3,081.03'$
 $T = 1,968.06'$
 $R = 1,950.00'$
 $S_e = 0.3$
 $RUNOFF = 108'$

NOTES:
 SEE SHEET 18 FOR -L- PROFILE.