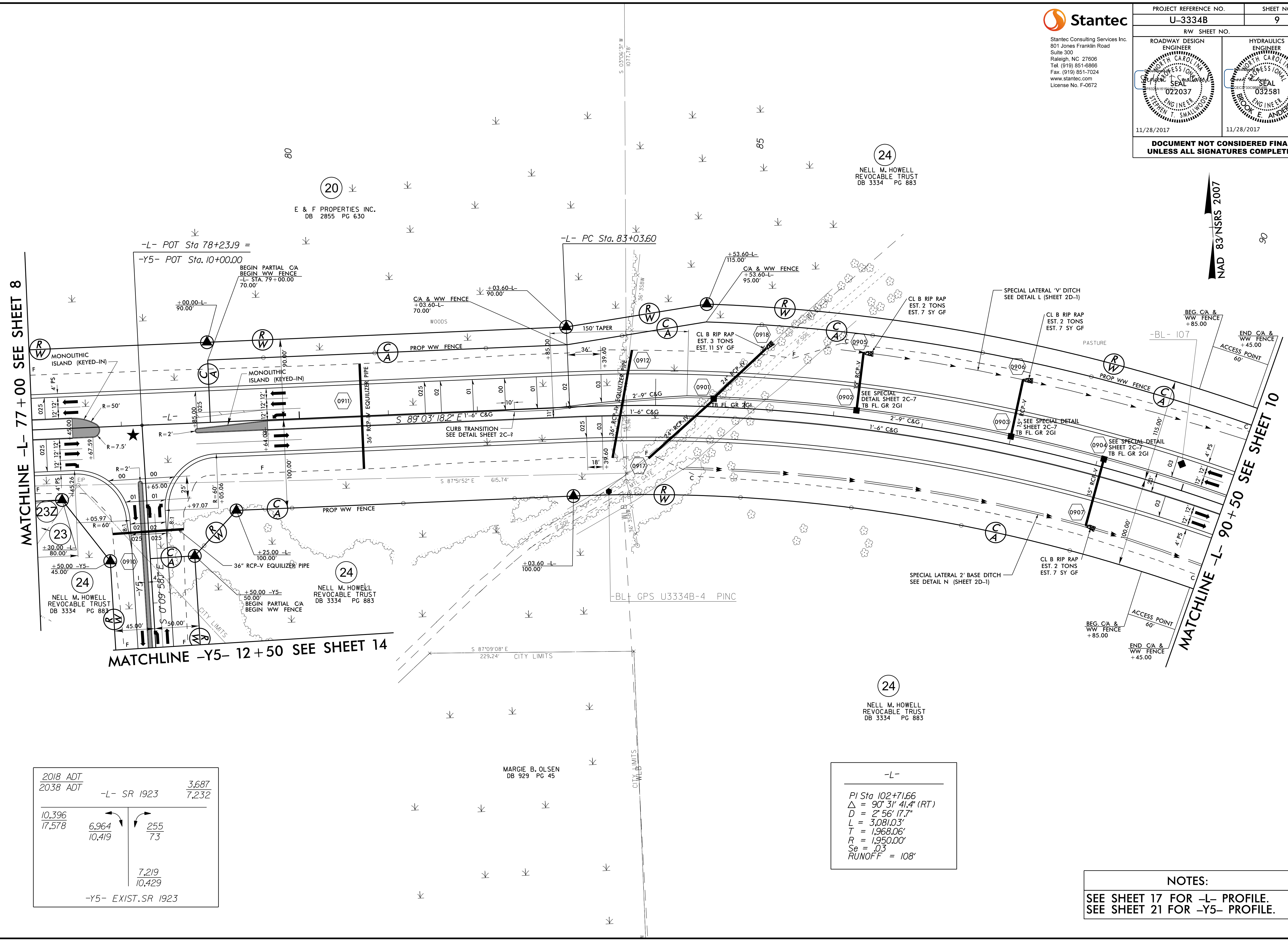


PROJECT REFERENCE NO. U-3334B	SHEET NO. 9
ROADWAY DESIGN ENGINEER SEAL 022037 STEPHEN T. SMALLWOOD	HYDRAULICS ENGINEER SEAL 032581 BROOK E. ANDERSON
11/28/2017	11/28/2017
DOCUMENT NOT CONSIDERED FINAL UNLESS ALL SIGNATURES COMPLETED	



REVISIONS

MATCHLINE -L- 77 + 00 SEE SHEET 8

MATCHLINE -Y5- 12 + 50 SEE SHEET 14

MATCHLINE -L- 90 + 50 SEE SHEET 10

2018 ADT	-L- SR 1923	3,687
2038 ADT		7,232
10,396	6,964	255
17,578	10,419	73
	7,219	
	10,429	
	-Y5- EXIST. SR 1923	

-L-

PI Sta 102+71.66
 $\Delta = 90^\circ 31' 41.4''$ (RT)
 $D = 2' 56' 17.7''$
 $L = 3,081.03'$
 $T = 1,968.06'$
 $R = 1,950.00'$
 $Se = .03$
 $RUNOFF = 108'$

NOTES:
 SEE SHEET 17 FOR -L- PROFILE.
 SEE SHEET 21 FOR -Y5- PROFILE.

I:\27\2017\17\Roadway\Proj\U3334B_rnd\j_psh_s9.dgn