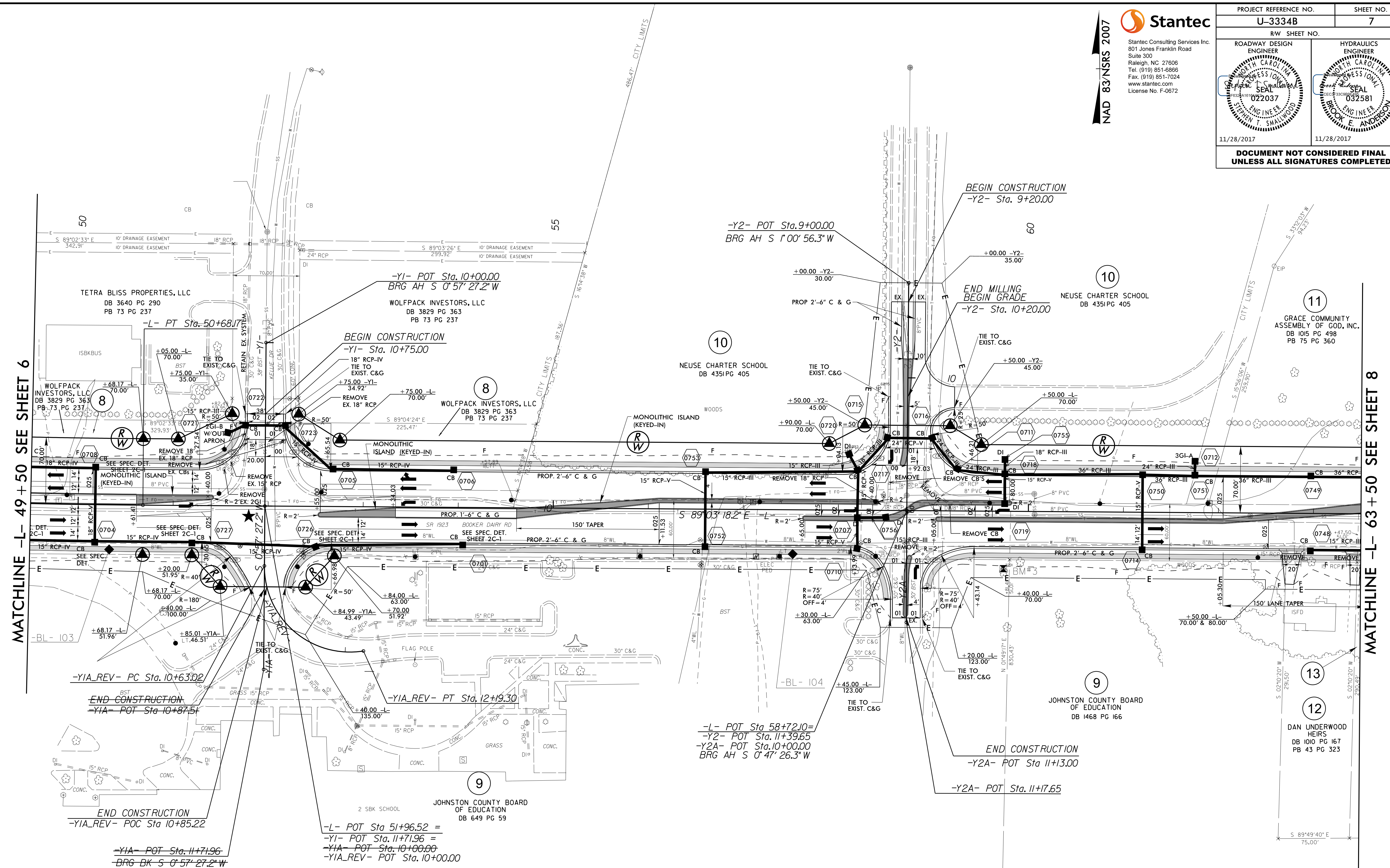


8/17/99

NAD 83 NRS 2007

Stantec
 Stantec Consulting Services Inc.
 801 Jones Franklin Road
 Suite 300
 Raleigh, NC 27606
 Tel: (919) 851-6866
 Fax: (919) 851-7024
 www.stantec.com
 License No. F-0672

PROJECT REFERENCE NO. U-3334B	SHEET NO. 7
ROADWAY DESIGN ENGINEER SEAL 022037 CHRISTOPHER T. SMALLWOOD	HYDRAULICS ENGINEER SEAL 032581 BROOK E. ANDERSON
11/28/2017	11/28/2017
DOCUMENT NOT CONSIDERED FINAL UNLESS ALL SIGNATURES COMPLETED	



MATCHLINE -L- 49 + 50 SEE SHEET 6

MATCHLINE -L- 63 + 50 SEE SHEET 8

REVISIONS

11/27/2017
I:\Roadway\Proj\U3334B_rnd\j.psh.s7.dgn
C:\Users\j.psh\Documents\U3334B.dwg

<p>-YIA_REV- PI Sta 11+69.31 $\Delta = 99' 29'' 11.0''$ (LT) $D = 63' 39'' 43.1''$ $L = 156.27'$ $T = 106.29'$ $R = 90.00'$</p>	<p>-L- PI Sta 48+24.72 $\Delta = 3' 29'' 17.6''$ (LT) $D = 0' 42'' 58.3''$ $L = 487.05'$ $T = 243.60'$ $R = 8,000.00'$ $Se = NC$</p>
---	--

NOTES:
 SEE SHEET 16 FOR -L- PROFILE.
 SEE SHEET 20 FOR -Y1-, -Y1A_REV-, -Y2- & -Y2A- PROFILES.
 ★ PROPOSED SIGNAL.