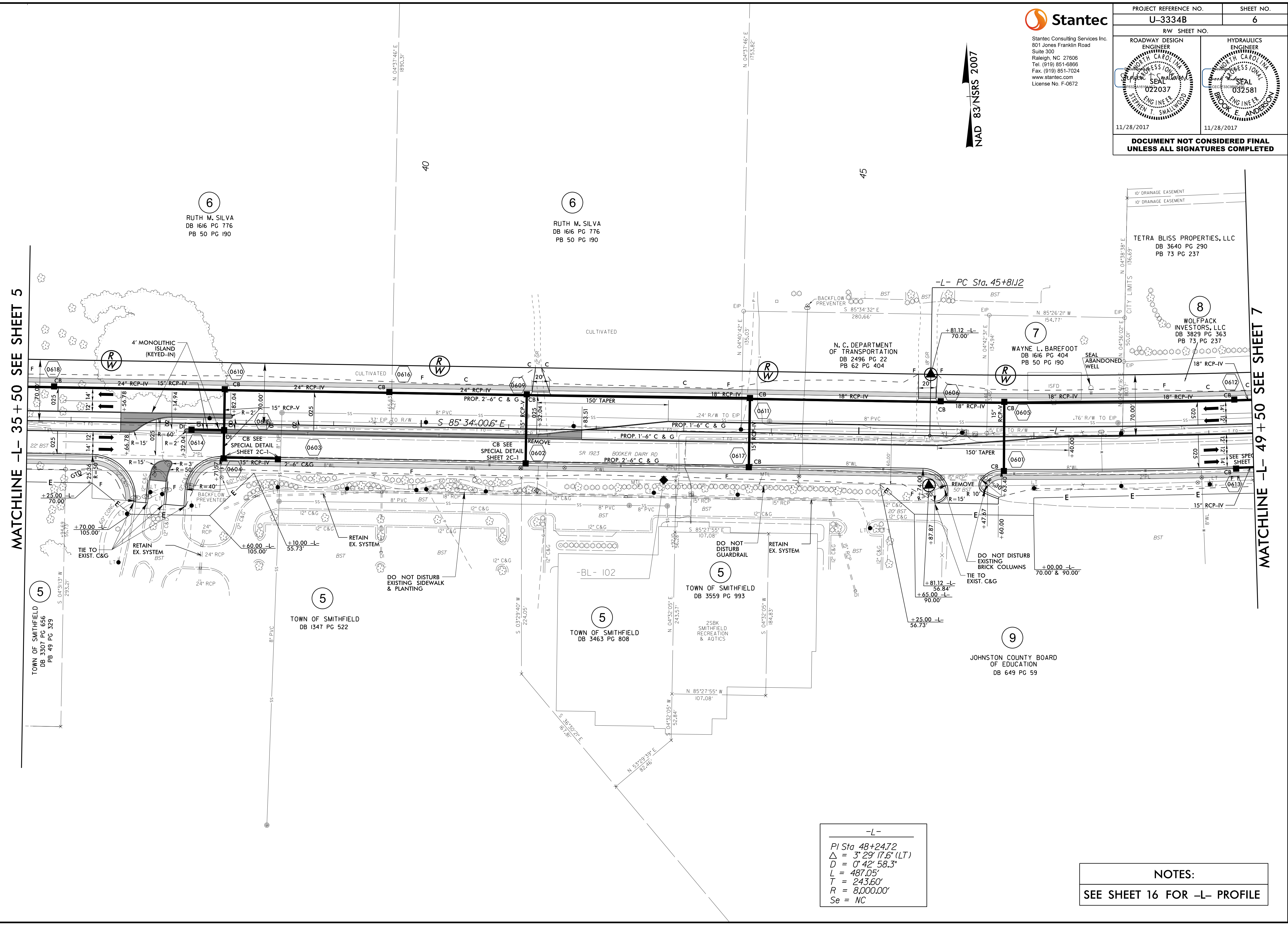


PROJECT REFERENCE NO. U-3334B	SHEET NO. 6
ROADWAY DESIGN ENGINEER SEAL 022037 STEPHEN T. SMALLWOOD	HYDRAULICS ENGINEER SEAL 032581 BROOK E. ANDERSON
11/28/2017	11/28/2017
DOCUMENT NOT CONSIDERED FINAL UNLESS ALL SIGNATURES COMPLETED	

NAD 83/NSRS 2007

MATCHLINE -L- 35 + 50 SEE SHEET 5

MATCHLINE -L- 49 + 50 SEE SHEET 7



REVISIONS

-L-

PI Sta 48+24.72
 $\Delta = 3^{\circ} 29' 17.6''$ (LT)
 $D = 0^{\circ} 42' 58.3''$
 $L = 487.05'$
 $T = 243.60'$
 $R = 8,000.00'$
 $Se = NC$

NOTES:
 SEE SHEET 16 FOR -L- PROFILE