

**This electronic collection of documents is provided
for the convenience of the user
and is Not a Certified Document –**

**The documents contained herein were originally issued
and sealed by the individuals whose names and license
numbers appear on each page, on the dates appearing
with their signature on that page.**

**This file or an individual page
shall not be considered a certified document.**

**STATE OF NORTH CAROLINA
DIVISION OF HIGHWAYS**

PROJ. REFERENCE NO.	SHEET NO.
B-4943	X-1A

NOTE: EMBANKMENT COLUMN DOES NOT INCLUDE BACKFILL FOR UNDERCUT

CROSS-SECTION SUMMARY

APPROXIMATE QUANTITIES ONLY.
UNCLASSIFIED EXCAVATION, FINE GRADING,
CLEARING AND GRUBBING, BREAKING OF
EXISTING PAVEMENT, AND REMOVAL OF
EXISTING PAVEMENT WILL BE PAID FOR AT
THE CONTRACT LUMP SUM PRICE FOR
"GRADING"

Station	Uncl. Exc.	Embt
-L-	(cu. yd.)	(cu. yd.)
10+00.00	0	0
10+50.00	333	2
11+00.00	460	4
11+50.00	621	26
12+00.00	620	54
12+50.00	643	35
13+00.00	675	5
13+50.00	496	11
14+00.00	299	44
14+23.35 (BR)	49	43

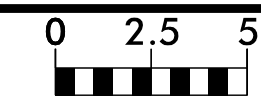
Station	Uncl. Exc.	Embt
-L-	(cu. yd.)	(cu. yd.)
15+10.65 (BR)	0	0
15+50.00	0	809
16+00.00	2	836
16+50.00	9	623
17+00.00	15	417
17+50.00	17	275
18+00.00	18	150
18+50.00	8	62
19+00.00	2	31
19+50.00	4	4

REVISIONS

8/17/99

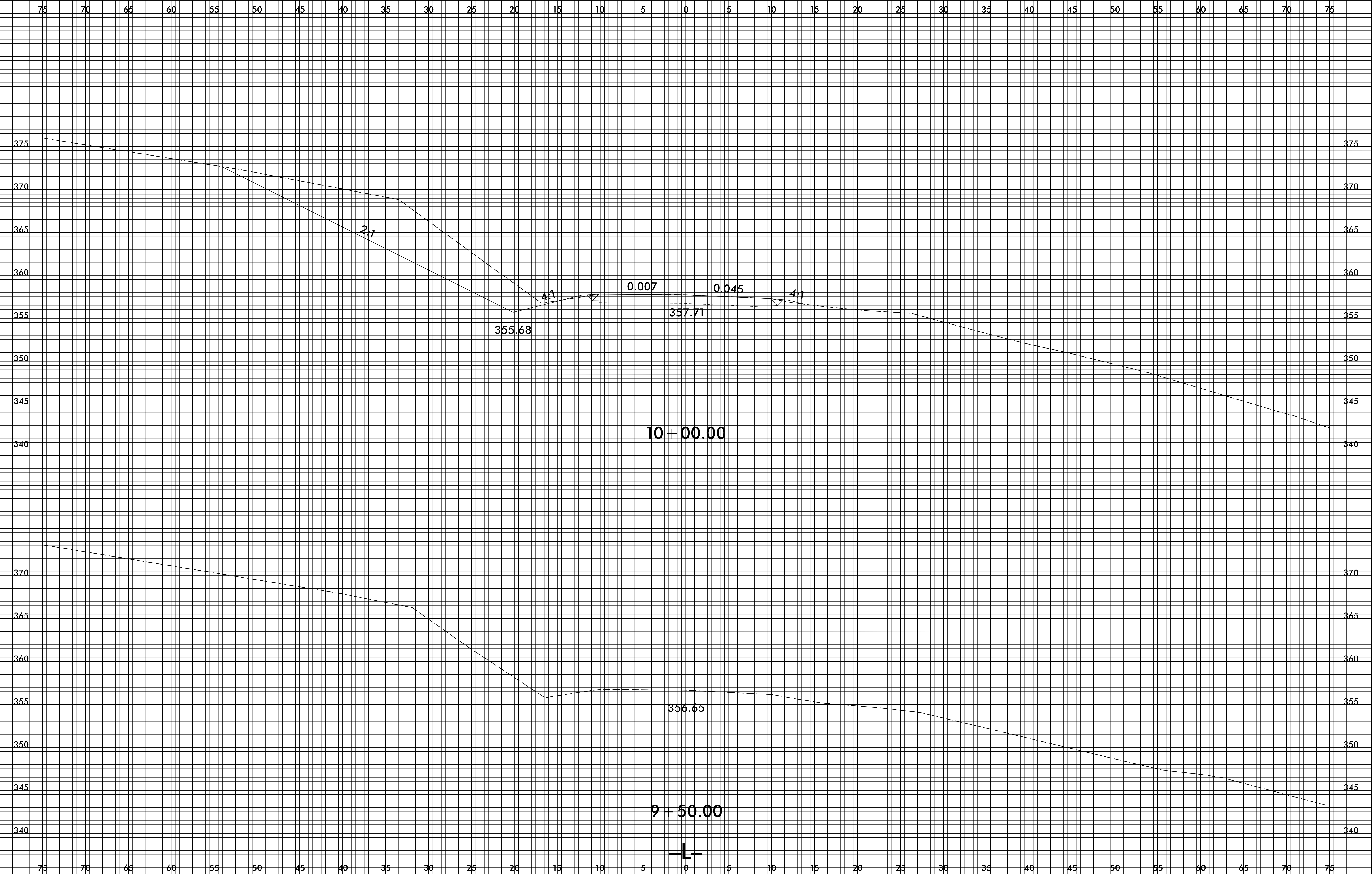
10/16/2017
15:11:00
I:\Projects\2017\B4943\XSC\B4943_xp1_x1a.dgn

8/23/99



PROJ. REFERENCE NO.	SHEET NO.
B-4943	X-1

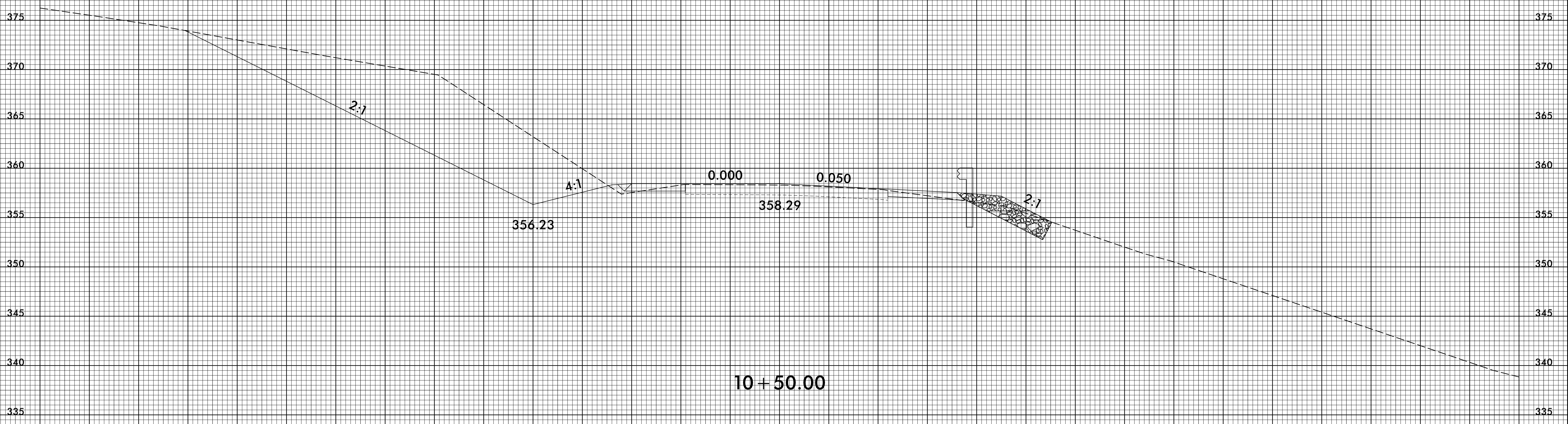
PROJ. REFERENCE NO.	SHEET NO.
B-4943	X-1



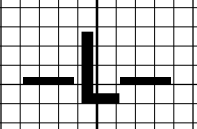
3/31/2017
I:\Projects\XSC\B4943_rdy_xpl.dgn



75 70 65 60 55 50 45 40 35 30 25 20 15 10 5 0 5 10 15 20 25 30 35 40 45 50 55 60 65 70 75



10 + 50.00



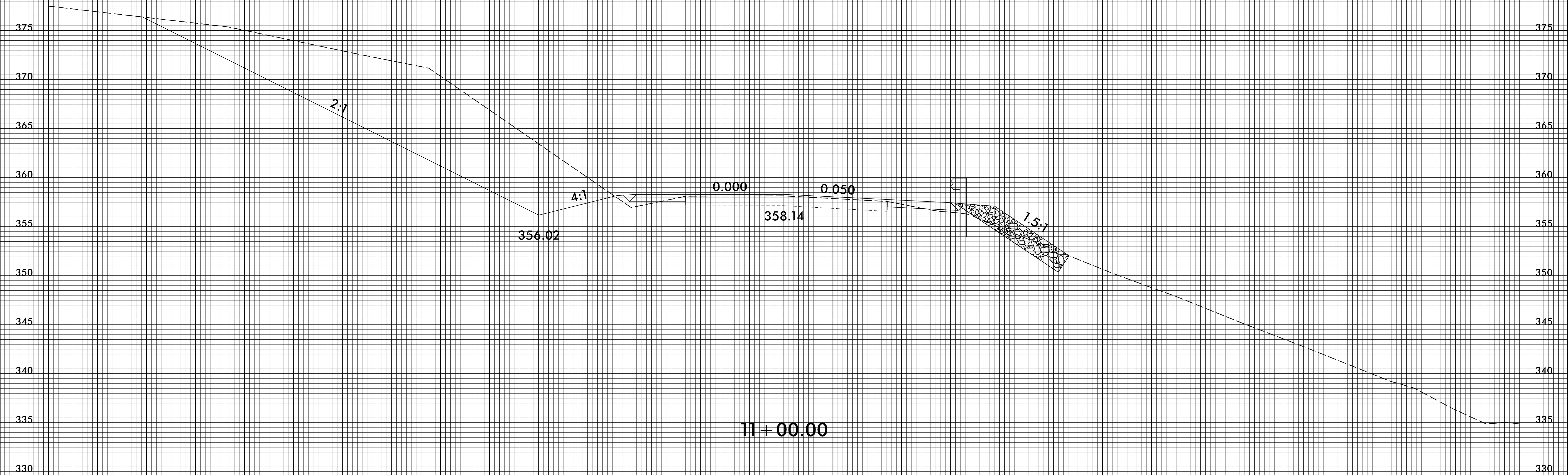
8/23/99



PROJ. REFERENCE NO.	SHEET NO.
B-4943	X-3

PROJ. REFERENCE NO.	SHEET NO.
B-4943	X-3

75 70 65 60 55 50 45 40 35 30 25 20 15 10 5 0 5 10 15 20 25 30 35 40 45 50 55 60 65 70 75



3/3/2017
 J:\Projects\XSC\B4943_rdy_xpl.dgn
 J:\Projects\XSC\B4943_rdy_xpl.dgn

75 70 65 60 55 50 45 40 35 30 25 20 15 10 5 0 5 10 15 20 25 30 35 40 45 50 55 60 65 70 75

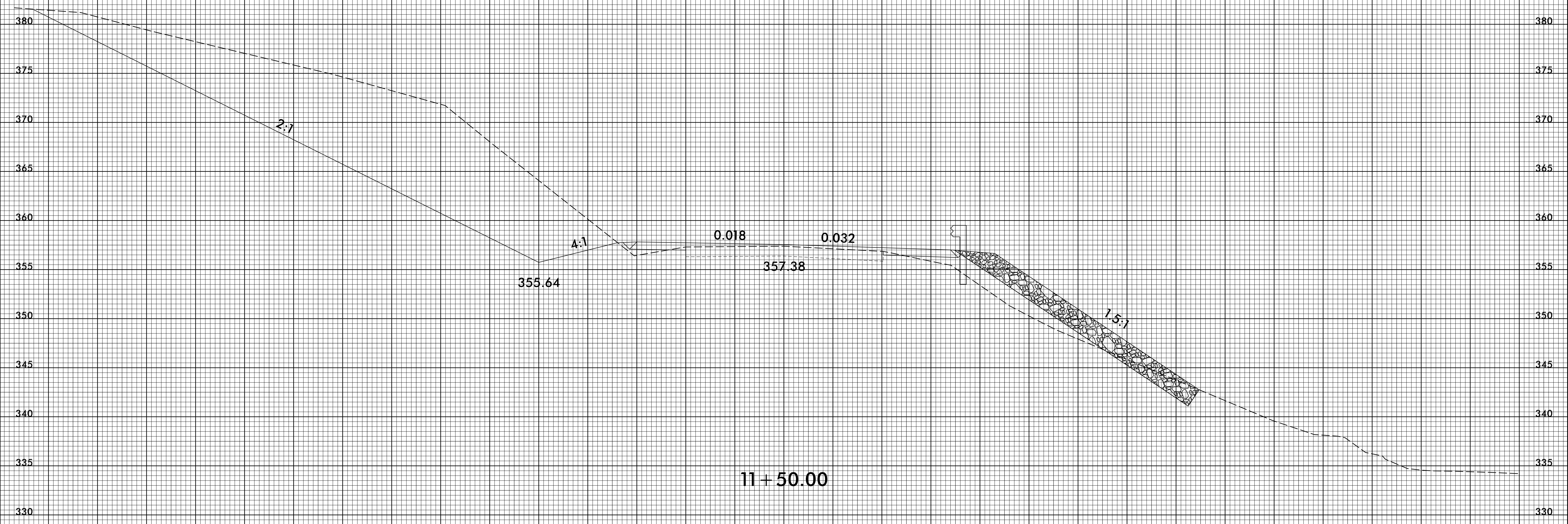
8/23/99



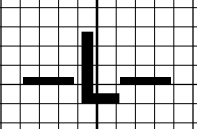
PROJ. REFERENCE NO.
B-4943

SHEET NO.
X-4

75 70 65 60 55 50 45 40 35 30 25 20 15 10 5 0 5 10 15 20 25 30 35 40 45 50 55 60 65 70 75



11 + 50.00



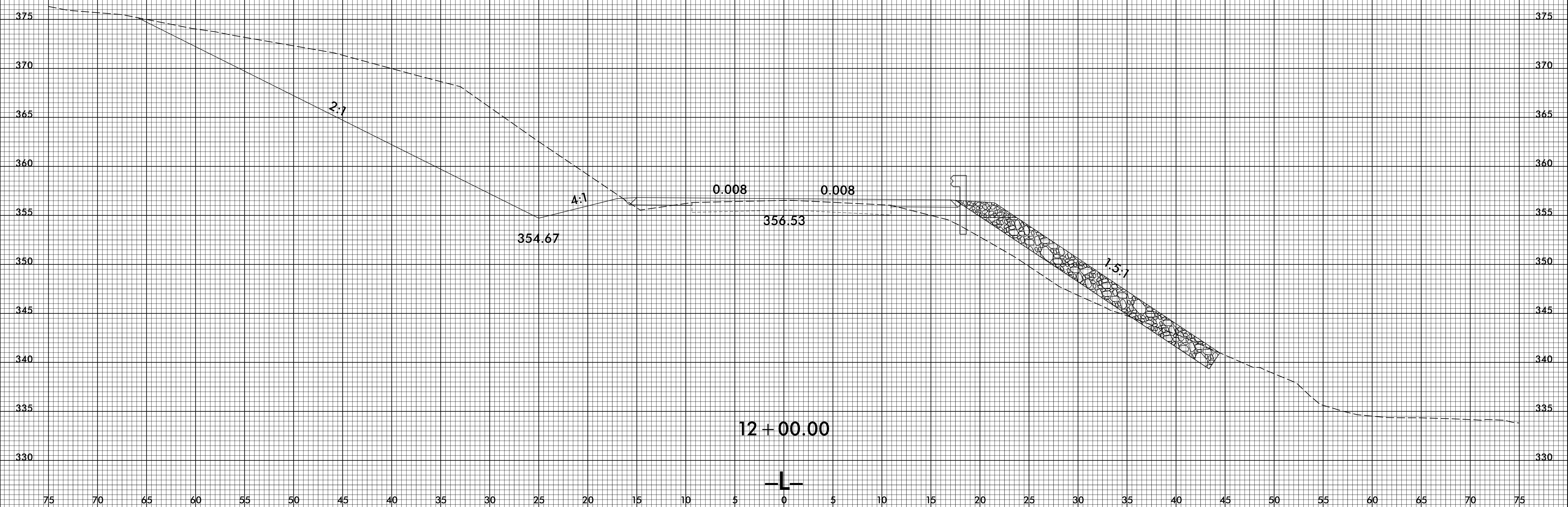
3/3/2017
I:\Projects\XSC\B4943_rdy_xpl.dgn

8/23/99



PROJ. REFERENCE NO.	SHEET NO.
B-4943	X-5

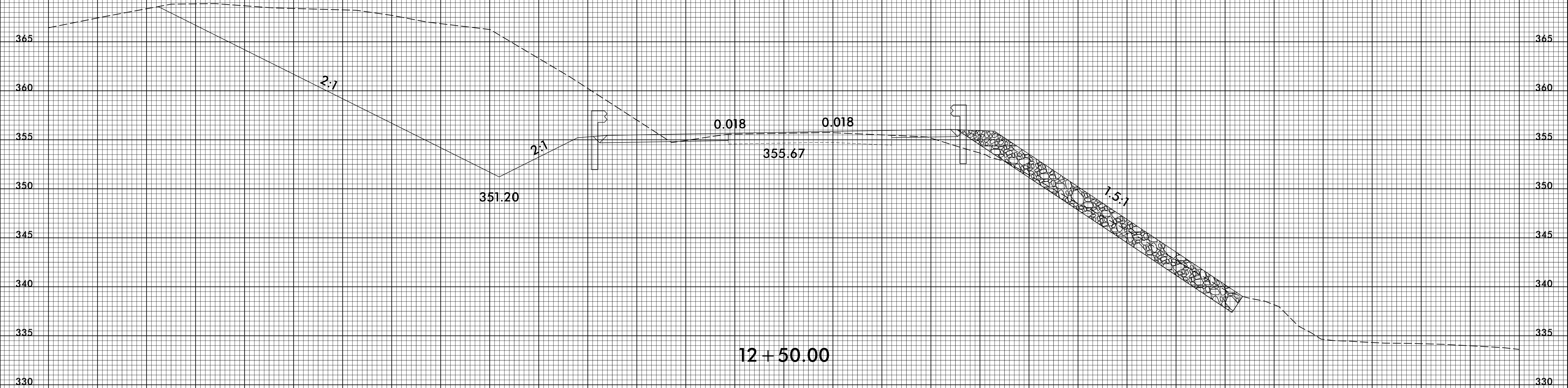
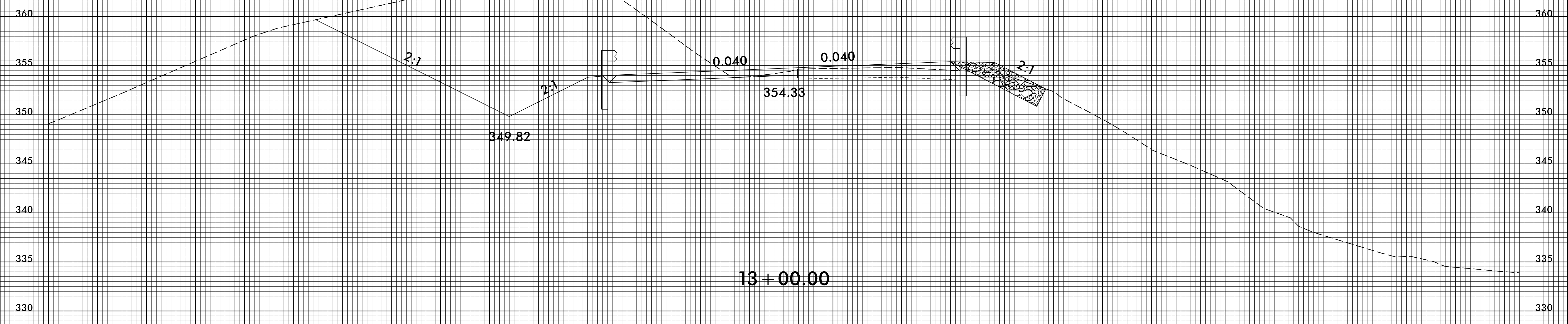
75 70 65 60 55 50 45 40 35 30 25 20 15 10 5 0 5 10 15 20 25 30 35 40 45 50 55 60 65 70 75



3/31/2017
 I:\Projects\XSC\B4943_rdy_xpl.dgn



75 70 65 60 55 50 45 40 35 30 25 20 15 10 5 0 5 10 15 20 25 30 35 40 45 50 55 60 65 70 75



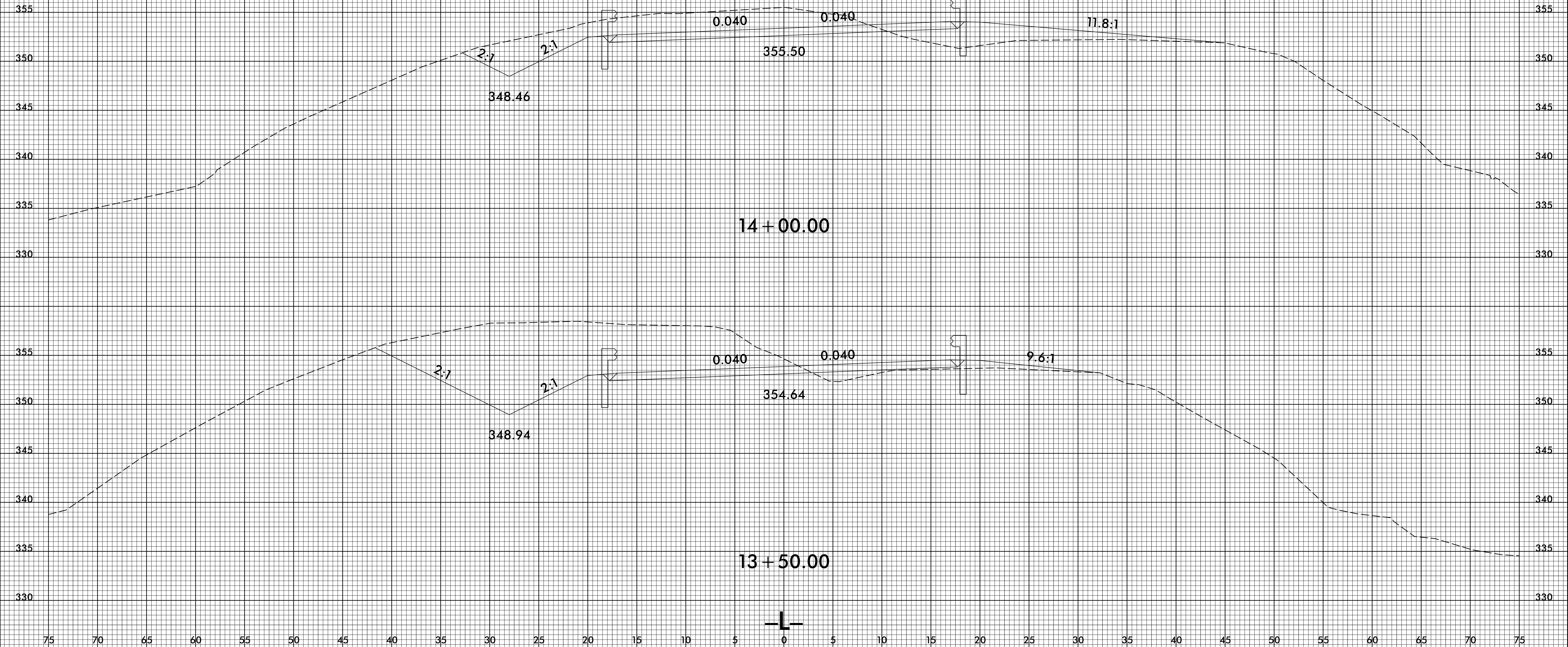
75 70 65 60 55 50 45 40 35 30 25 20 15 10 5 0 5 10 15 20 25 30 35 40 45 50 55 60 65 70 75

8/23/99



PROJ. REFERENCE NO.	SHEET NO.
B-4943	X-7

75 70 65 60 55 50 45 40 35 30 25 20 15 10 5 0 5 10 15 20 25 30 35 40 45 50 55 60 65 70 75



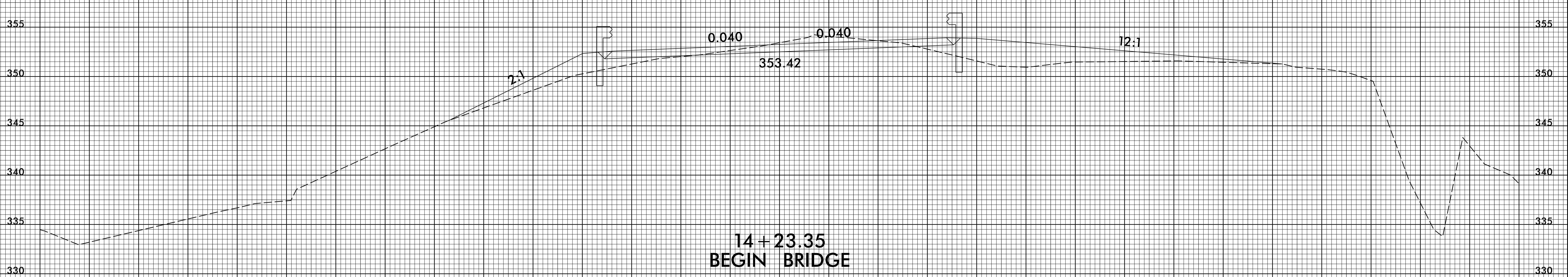
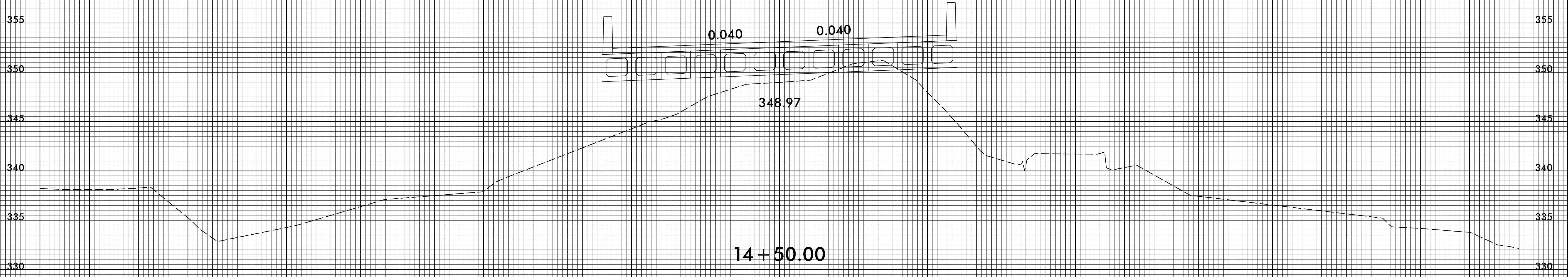
3/31/2017
 J:\Projects\XSC\B4943_rdy_xpl.dgn

8/23/99



PROJ. REFERENCE NO.	SHEET NO.
B-4943	X-8

75 70 65 60 55 50 45 40 35 30 25 20 15 10 5 0 5 10 15 20 25 30 35 40 45 50 55 60 65 70 75



75 70 65 60 55 50 45 40 35 30 25 20 15 10 5 0 5 10 15 20 25 30 35 40 45 50 55 60 65 70 75

3/31/2017
I:\Projects\XSC\B4943_rdy_xpl.dgn

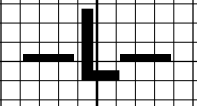
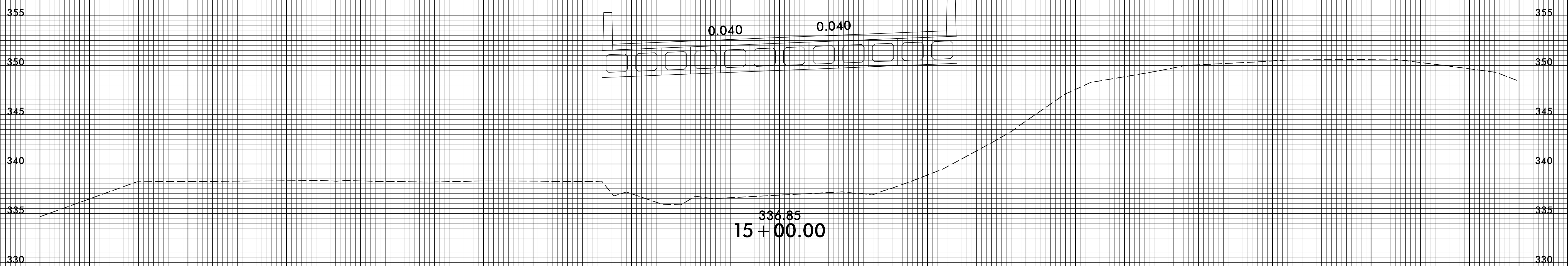
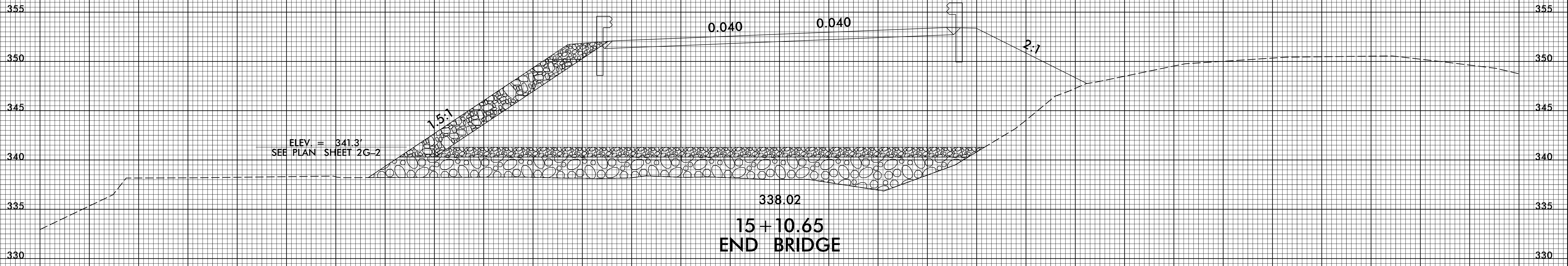
8/23/99



PROJ. REFERENCE NO.
B-4943

SHEET NO.
X-9

75 70 65 60 55 50 45 40 35 30 25 20 15 10 5 0 5 10 15 20 25 30 35 40 45 50 55 60 65 70 75



75 70 65 60 55 50 45 40 35 30 25 20 15 10 5 0 5 10 15 20 25 30 35 40 45 50 55 60 65 70 75

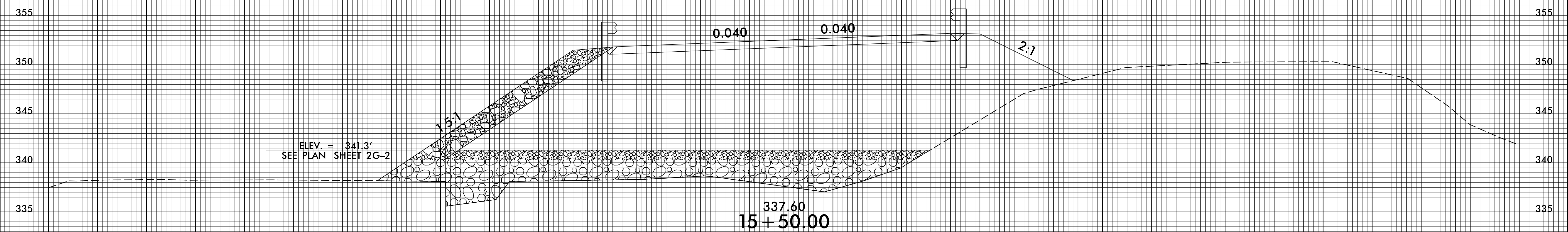
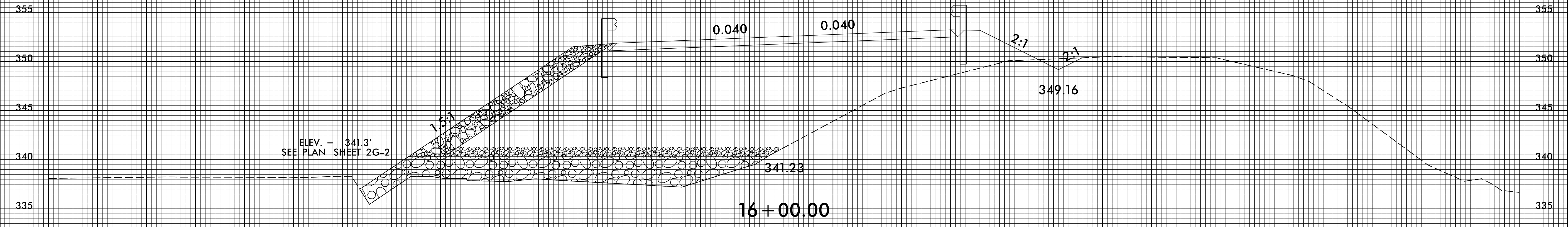
3/3/2017
I:\Roadway\XSC\B4943_rdy_xpl.dgn

8/23/99



PROJ. REFERENCE NO.	SHEET NO.
B-4943	X-10

75 70 65 60 55 50 45 40 35 30 25 20 15 10 5 0 5 10 15 20 25 30 35 40 45 50 55 60 65 70 75



75 70 65 60 55 50 45 40 35 30 25 20 15 10 5 0 5 10 15 20 25 30 35 40 45 50 55 60 65 70 75

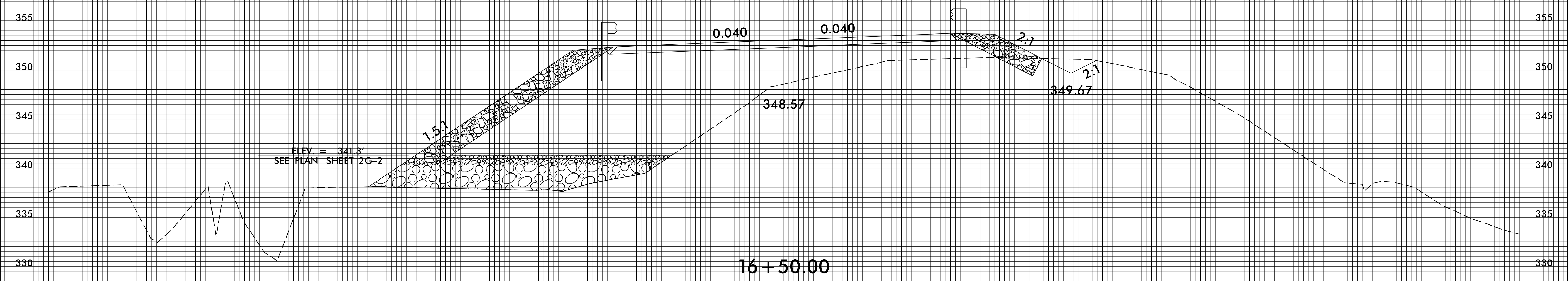
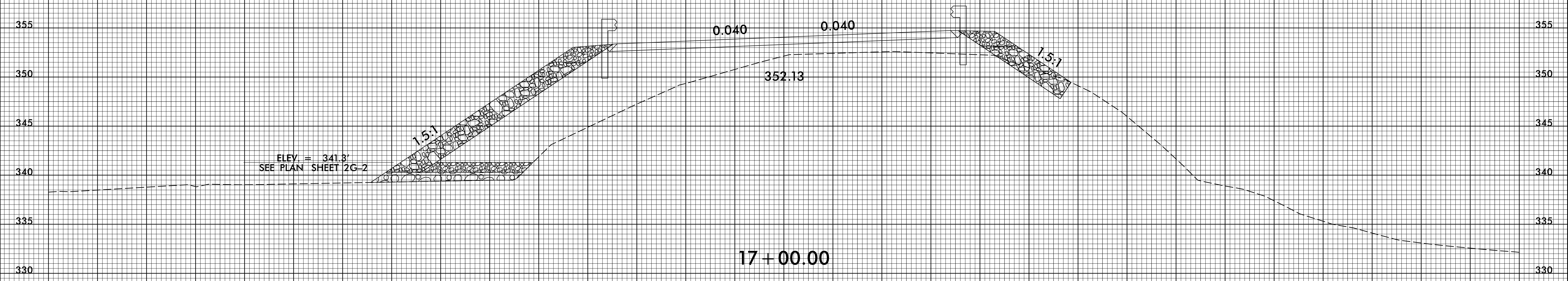
3/31/2017
 J:\Roadway\XSC\B4943_rdy_xpl.dgn

8/23/99



PROJ. REFERENCE NO.	SHEET NO.
B-4943	X-11

75 70 65 60 55 50 45 40 35 30 25 20 15 10 5 0 5 10 15 20 25 30 35 40 45 50 55 60 65 70 75



75 70 65 60 55 50 45 40 35 30 25 20 15 10 5 0 5 10 15 20 25 30 35 40 45 50 55 60 65 70 75

3/31/2017
I:\Projects\B4943\B4943_rdy_xpl.dgn

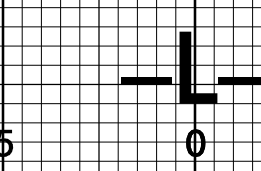
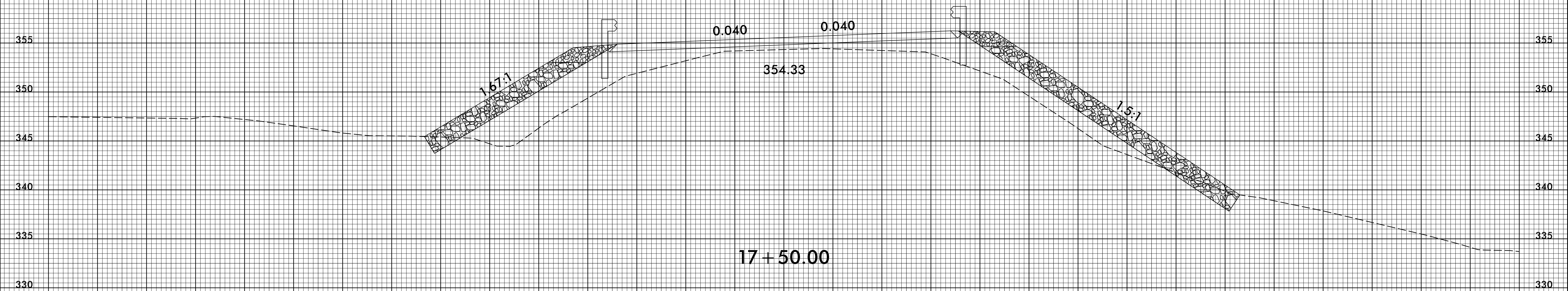
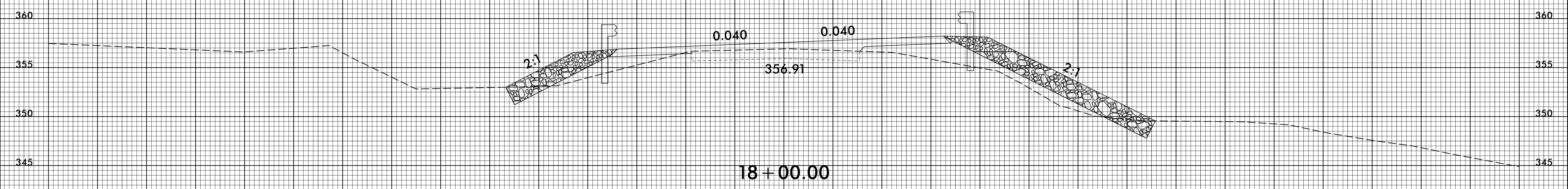
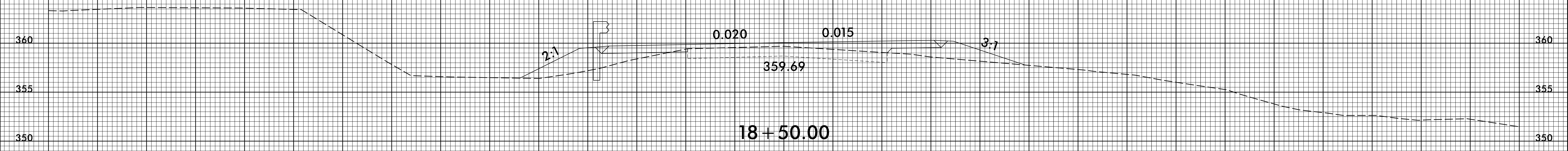
8/23/99



PROJ. REFERENCE NO.
B-4943

SHEET NO.
X-12

75 70 65 60 55 50 45 40 35 30 25 20 15 10 5 0 5 10 15 20 25 30 35 40 45 50 55 60 65 70 75



75 70 65 60 55 50 45 40 35 30 25 20 15 10 5 0 5 10 15 20 25 30 35 40 45 50 55 60 65 70 75

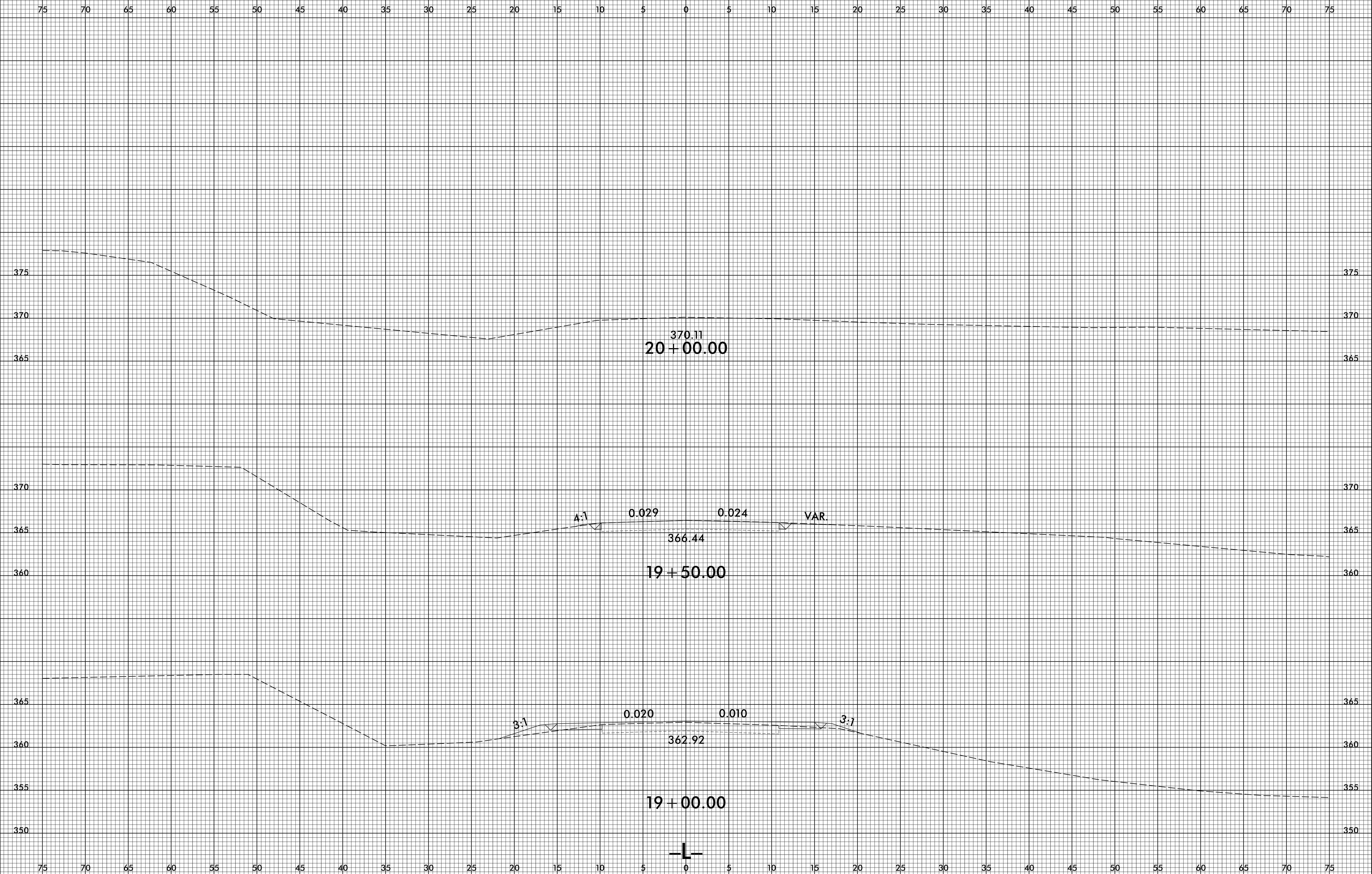
3/3/2017
I:\Roadway\XSC\B4943_rdy_xpl.dgn

8/23/99



PROJ. REFERENCE NO.	SHEET NO.
B-4943	X-13

PROJ. REFERENCE NO.	SHEET NO.
B-4943	X-13



3/31/2017
I:\Projects\XSC\B4943_rdy_xpl.dgn

