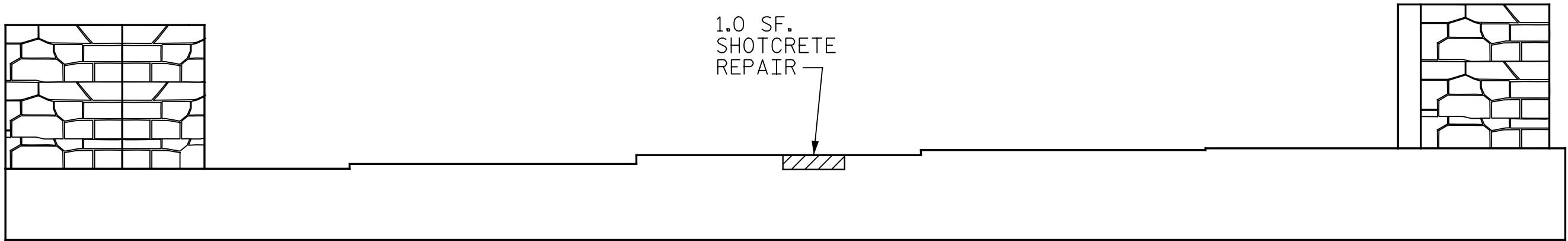
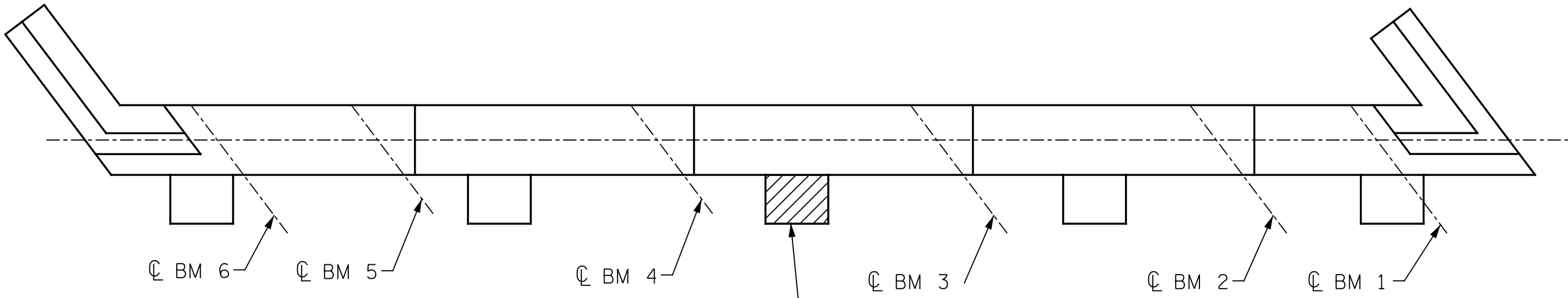


PLAN

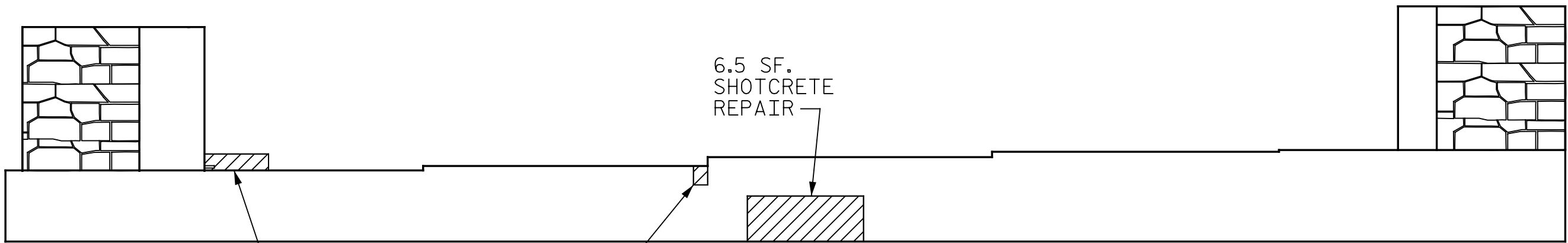


ELEVATION

END BENT 1



PLAN



ELEVATION

END BENT 2

AS-BUILT REPAIR QUANTITY TABLE

END BENT 1	QUANTITIES				
	ESTIMATE		ACTUAL		
SHOTCRETE REPAIRS	AREA SF	VOLUME CF	AREA SF	DEPTH FT	VOLUME CF
CAP (VERTICAL FACE)	1.0	0.5			
CAP (HORIZONTAL, CORNER)	1.4	0.7			
ANCHORED VENEER		AREA SF			AREA SF
		87			
END BENT 2	QUANTITIES				
	ESTIMATE		ACTUAL		
SHOTCRETE REPAIRS	AREA SF	VOLUME CF	AREA SF	DEPTH FT	VOLUME CF
CAP (VERTICAL FACE)	8.0	4.0			
CAP (HORIZONTAL, CORNER)	3.9	1.9			
ANCHORED VENEER		AREA SF			AREA SF
		87			

VALUES IN CHART REPRESENT ESTIMATED REPAIR TOTALS AFTER REMOVAL OF UNSOUND CONCRETE, MIN. OF 1" BEHIND REBAR AND MIN. 2" CL TO SAWCUT. SEE REPAIR DETAILS.

NOTES:

REPAIR LOCATIONS AND ESTIMATE OF QUANTITIES ARE GIVEN WITH THE BEST INFORMATION AVAILABLE. IF ADDITIONAL REPAIRS NOT SHOWN ON THE DRAWINGS ARE DEEMED NECESSARY BY THE INSPECTOR OR ENGINEER THE CONTRACTOR SHALL NOTE ON THE DRAWINGS THE APPROXIMATE LOCATION AND DESCRIPTION OF THE REPAIRS AND ADJUST THE ACTUAL QUANTITIES ENTERED INTO THE REPAIR QUANTITY TABLE.

FINAL REPAIR QUANTITIES WILL BE DETERMINED AFTER THE STONE VENEER IS REMOVED. QUANTITIES IN TABLE ARE ESTIMATED.

FOR BENT REPAIRS, SEE "TYPICAL CAP AND COLUMN REPAIR DETAILS" SHEET.

SHOTCRETE REPAIRS MAY BE REPLACED WITH CONCRETE REPAIRS WITH THE APPROVAL OF THE ENGINEER.

FOR SHOTCRETE REPAIRS, SEE SPECIAL PROVISIONS.

FOR EPOXY COATING, SEE SPECIAL PROVISIONS.

- SHOTCRETE REPAIR
- CONCRETE REPAIR

PROJECT NO. I-5889A
BUNCOMBE COUNTY
BRIDGE NO. 378



DocuSigned by:
Eric B. Nelson
11/20/2017

STATE OF NORTH CAROLINA DEPARTMENT OF TRANSPORTATION RALEIGH					
END BENT 1 & 2					
REVISIONS					SHEET NO.
NO.	BY:	DATE:	NO.	BY:	DATE:
1			3		
2			4		
DOCUMENT NOT CONSIDERED FINAL UNLESS ALL SIGNATURES COMPLETED					TOTAL SHEETS 208

DRAWN BY : M.A.LEE DATE : 10/2017
CHECKED BY : R.NELSON DATE : 10/2017

PLANS PREPARED BY:
Gannett Fleming
Excellence Delivered *As Promised*
2610 Wycliff Road
Suite 102
Raleigh, NC 27607-3073
(919) 420-7660
[NC Lic. No. F-0270]