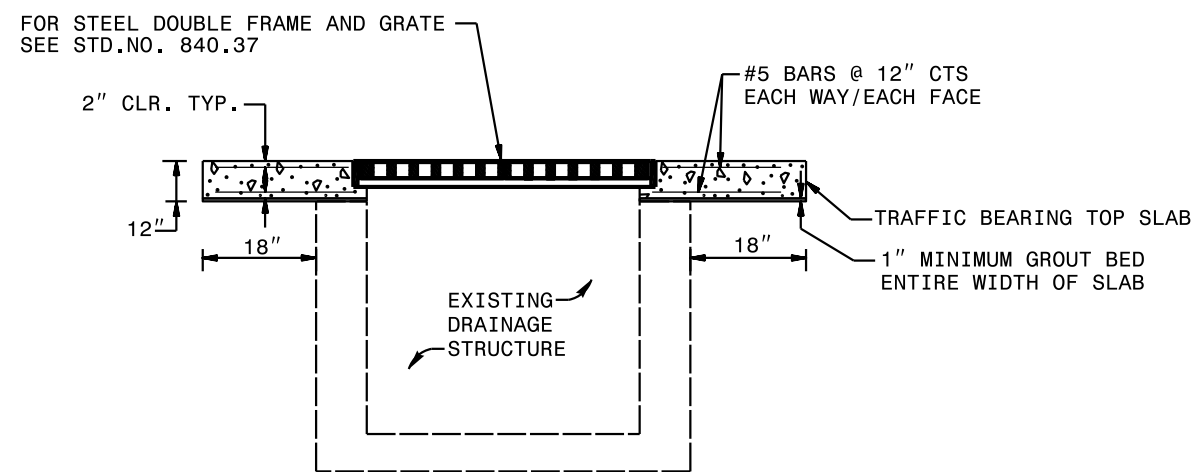


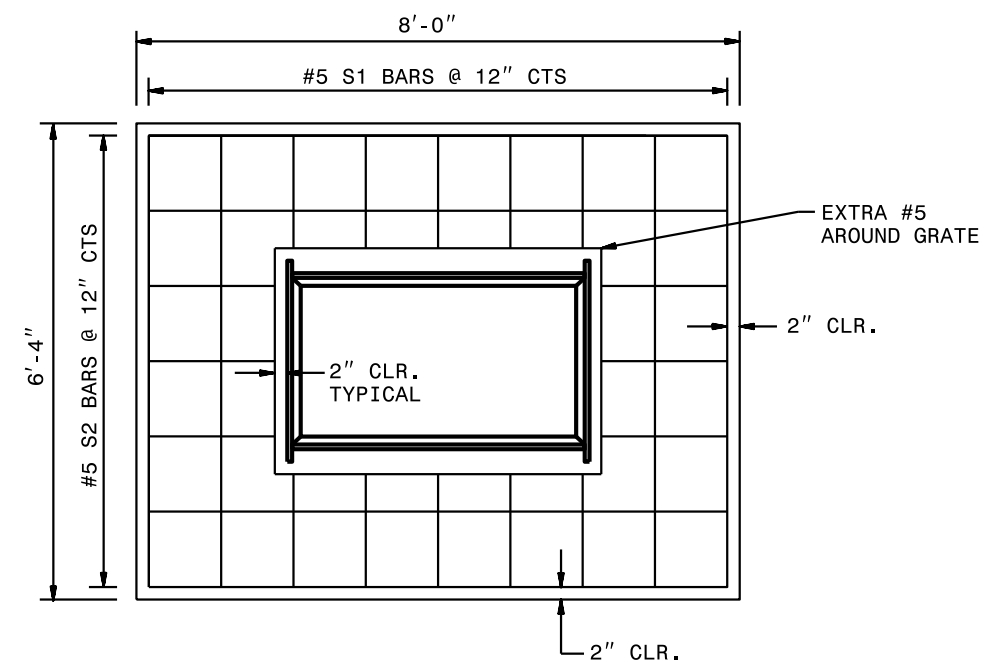
PLAN

BILL OF MATERIAL

TRAFFIC BEARING TOP SLAB				
BAR	NO.	SIZE	LENGTH	WEIGHT
S1	7	#5	7'-8"	56.0
S2	9	#5	6'-0"	56.3
TOTAL REINF. STEEL (lbs.)				112.3
CONCRETE TOTAL-(cu. yds.)				1.6



SECTION A-A



PLAN

GENERAL NOTES:

- QUANTITIES ARE FOR STEEL DOUBLE FRAME AND GRATE (STD. 840.37) OPENING
- USE 4000 PSI MINIMUM COMPRESSIVE STRENGTH CONCRETE
- CONFIRM DIMENSIONS ON EACH INDIVIDUAL DROP INLET FOR CONVERSION

CONTRACT STANDARDS AND DEVELOPMENT UNIT	
Office 919-707-6950 FAX 919-250-4119	
DETAIL TO CONVERT EXISTING DROP INLET TO A TRAFFIC BEARING DROP INLET	
ORIGINAL BY: E.E. WARD	DATE: 11-08-06
MODIFIED BY:	DATE:
CHECKED BY:	DATE:
FILE SPEC.: Jusr/detail/stand/trfbearinoslab.dgn	